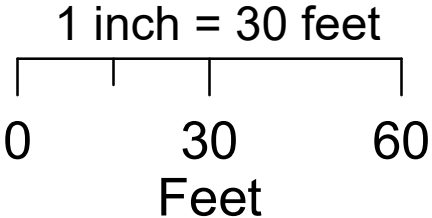


GIS Layers Provided by
City of Seattle



SITE PLAN
SIDEWALK AND AREAWAY REPAIR
160 SOUTH JACKSON STREET

160 S Jackson St Areaway Repair

Scope of Work

The scope of work involved in this areaway repair is limited to the replacement of 2 sidewalk panels on the street level. See figure 1 for approximate extents of replacement.

Within the areaway below grade, the scope includes the replacement of the existing areaway structural slab and existing steel beams. Members will be replaced with new concrete slabs and wide flange beams to support the new sidewalk above.

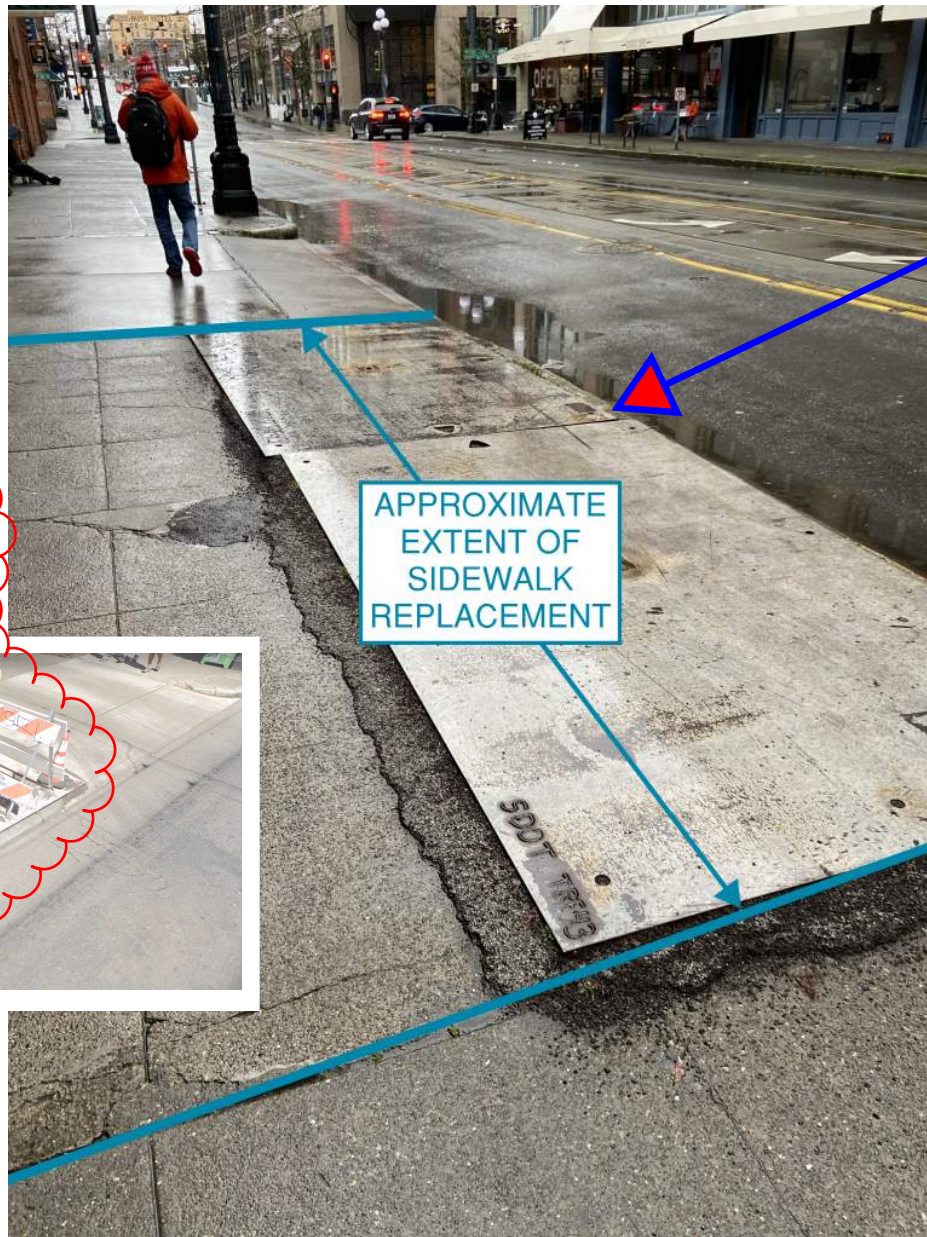


Figure 1: Approximate Extent of Sidewalk Replacement

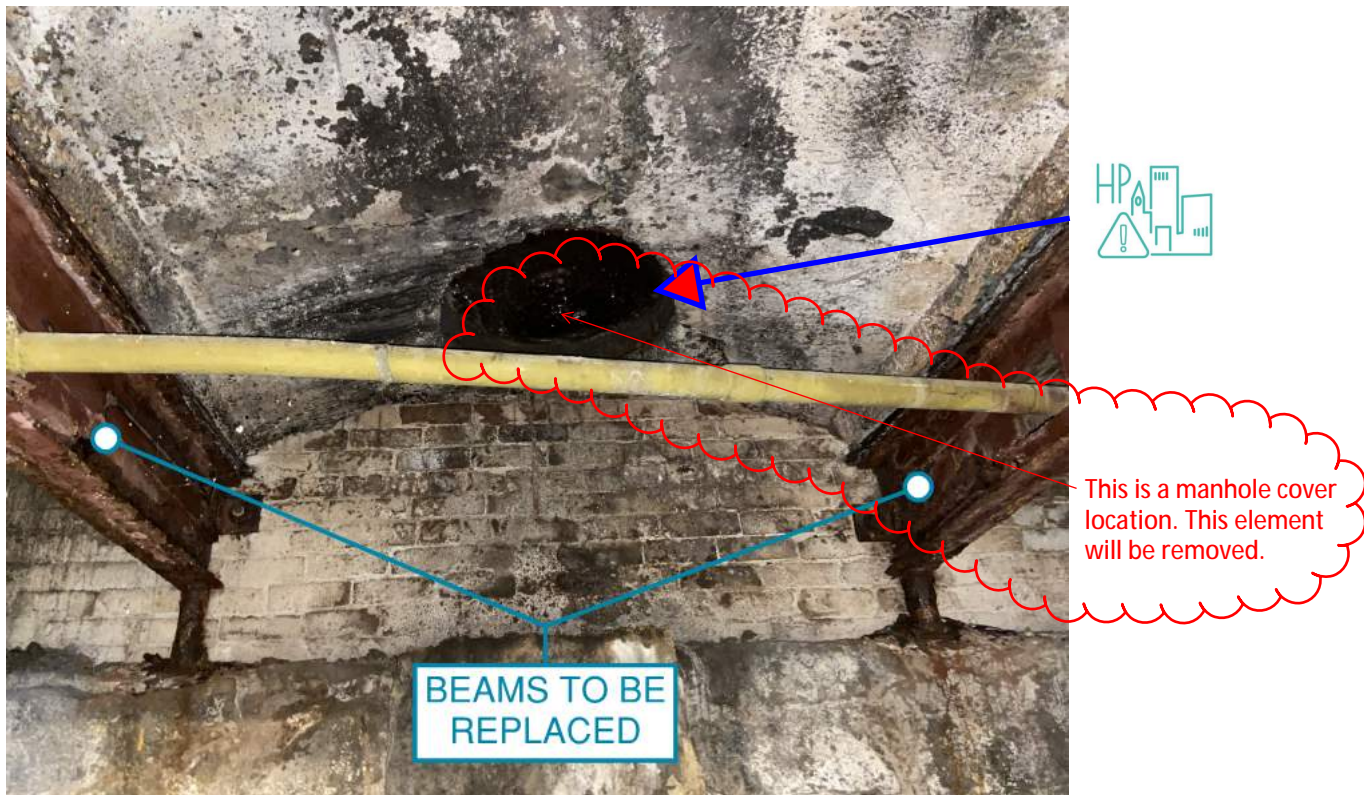


Figure 2: Existing Beams to be Replaced



Figure 3: Eastern End of Scope of Work

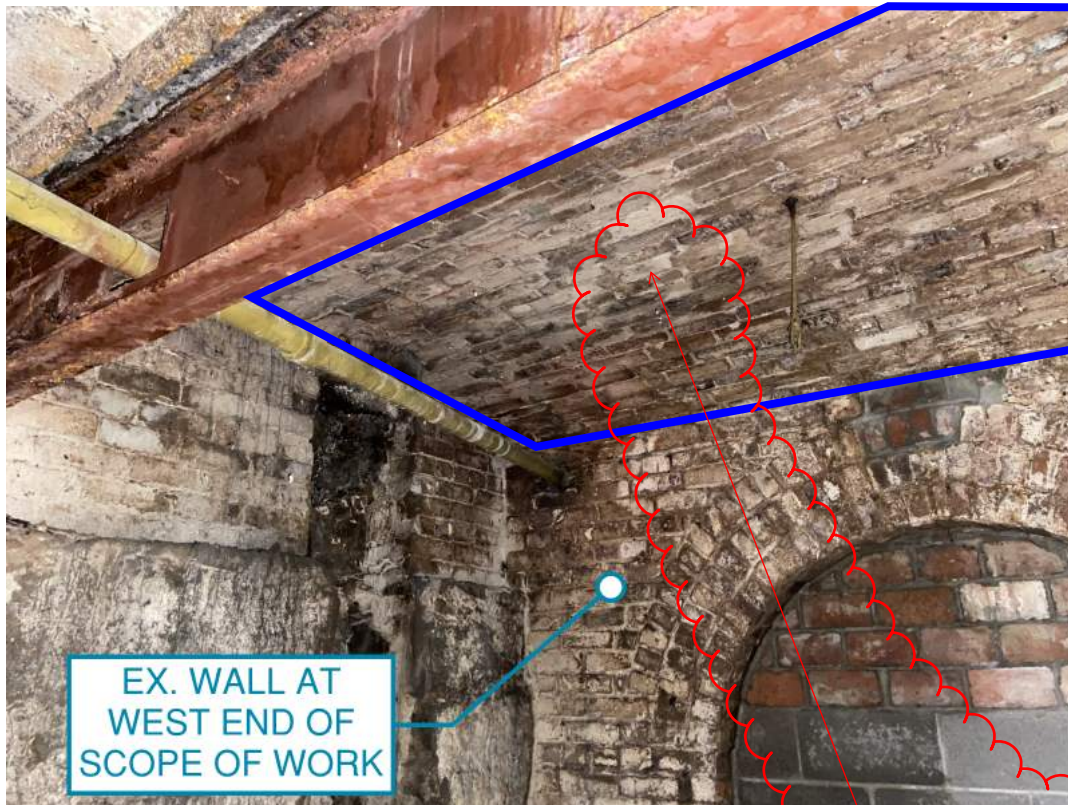
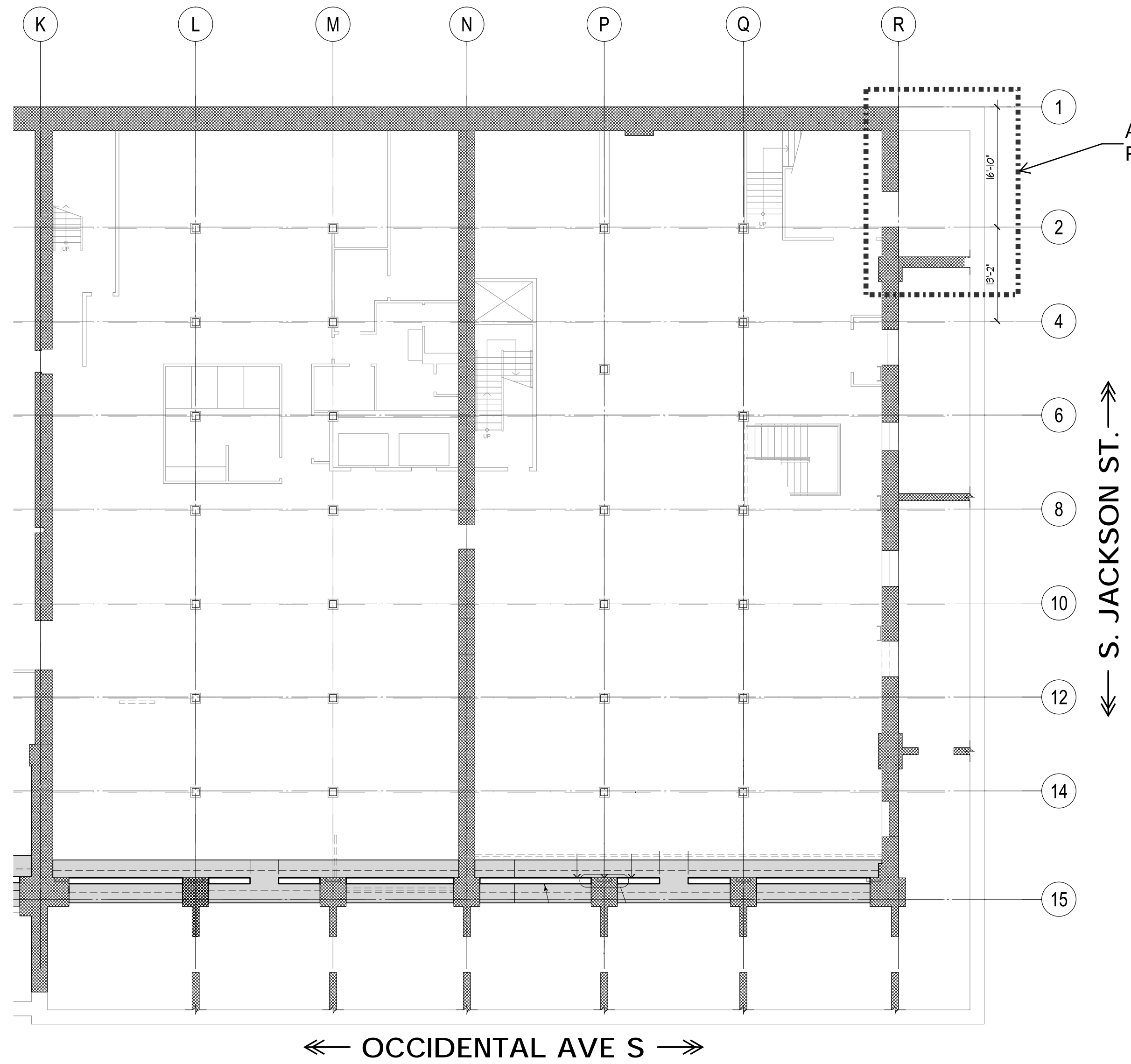


Figure 4: Western End of Scope of Work

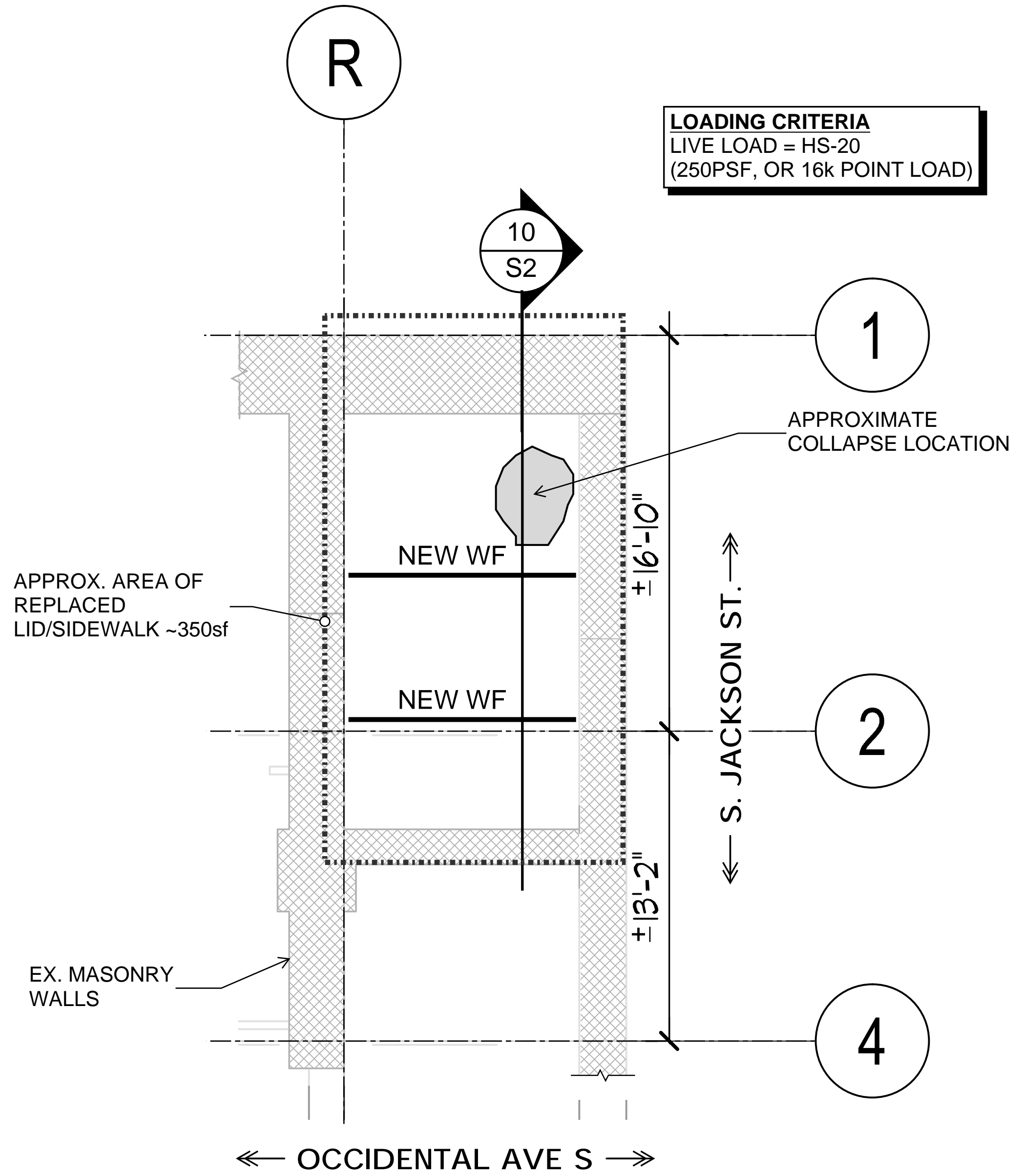
This brick arch will be removed as part of the repair. The new concrete slab will replace the arch at this location.

30% Complete Street Improvement Plan

Not For Construction



1
S1
GROUND PLAN
SCALE: 1/16" = 1'-0"



2
S1
AREA OF WORK PLAN
SCALE: 1/4" = 1'-0"

DATE	MARK	NATURE	REVISIONS	MADE	CHK'D	REV'D



**COUGHLIN
PORTER
LUNDEEN**
801 SECOND AVENUE, SUITE 900
SEATTLE, WA 98104
(206) 343-0460 www.cplinc.com



REVIEWED BY SPU/WATER ENGINEERING	20.....
REVIEWED BY SPU/DRAINAGE	20.....
APPROVED BY SDOT STREET IMPROVEMENT PERMITTING	20.....

NAME OR INITIALS AND DATE	INITIALS AND DATE
DESIGNED	REVIEWED:
CHECKED	PROJECT MANAGER
DRAWN	
CHECKED	
DESIGN REVIEW	REVISED AS-BUILT.....

All work done in accordance with the City of Seattle Standard Plans and Specifications in effect on the date shown above, and supplemented by Special Provisions.



SCALE: H. V. INSPECTOR'S'S BOOK

STATE/BURKE BUILDING AREAWAY REPAIR

160 S JACKSON ST
GROUND AREAWAY PLAN

SDOT PROJECT NO.
VAULT PLAN NO.
VAULT SERIAL NO.
SHEET OF

30% Complete Street Improvement Plan

Not For Construction

DATE	MARK	NATURE	REVISIONS
			MADE CHG'D REV'D



**COUGHLIN
PORTER
LUNDEEN**

801 SECOND AVENUE, SUITE 900
SEATTLE, WA 98104
(206) 343-0460 www.cplinc.com



REVIEWED BY SPU/WATER ENGINEERING	20.....
REVIEWED BY SPU/DRAINAGE	20.....
APPROVED BY SDOT STREET IMPROVEMENT PERMITTING	20.....

NAME OR INITIALS AND DATE	INITIALS AND DATE
DESIGNED	REVIEWED:
CHECKED	PROJECT MANAGER
DRAWN	
CHECKED	
DESIGN REVIEW	REVISED AS-BUILT.....

All work done in accordance with the City of Seattle Standard Plans and Specifications in effect on the date shown above, and supplemented by Special Provisions.



SCALE: H. V. INSPECTOR'S'S BOOK

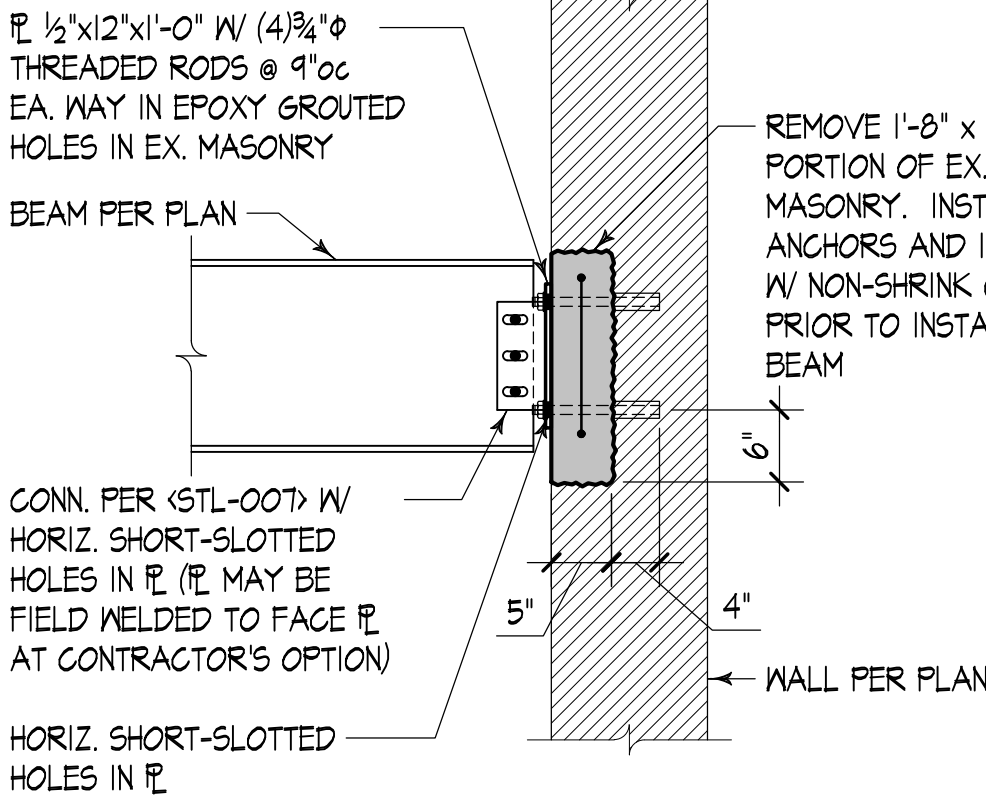
OCCIDENTAL MALL AREAWAY REPAIR

160 S JACKSON ST
GROUND AREAWAY PLAN

SDOT PROJECT NO.
VAULT PLAN NO.
VAULT SERIAL NO.
SHEET OF

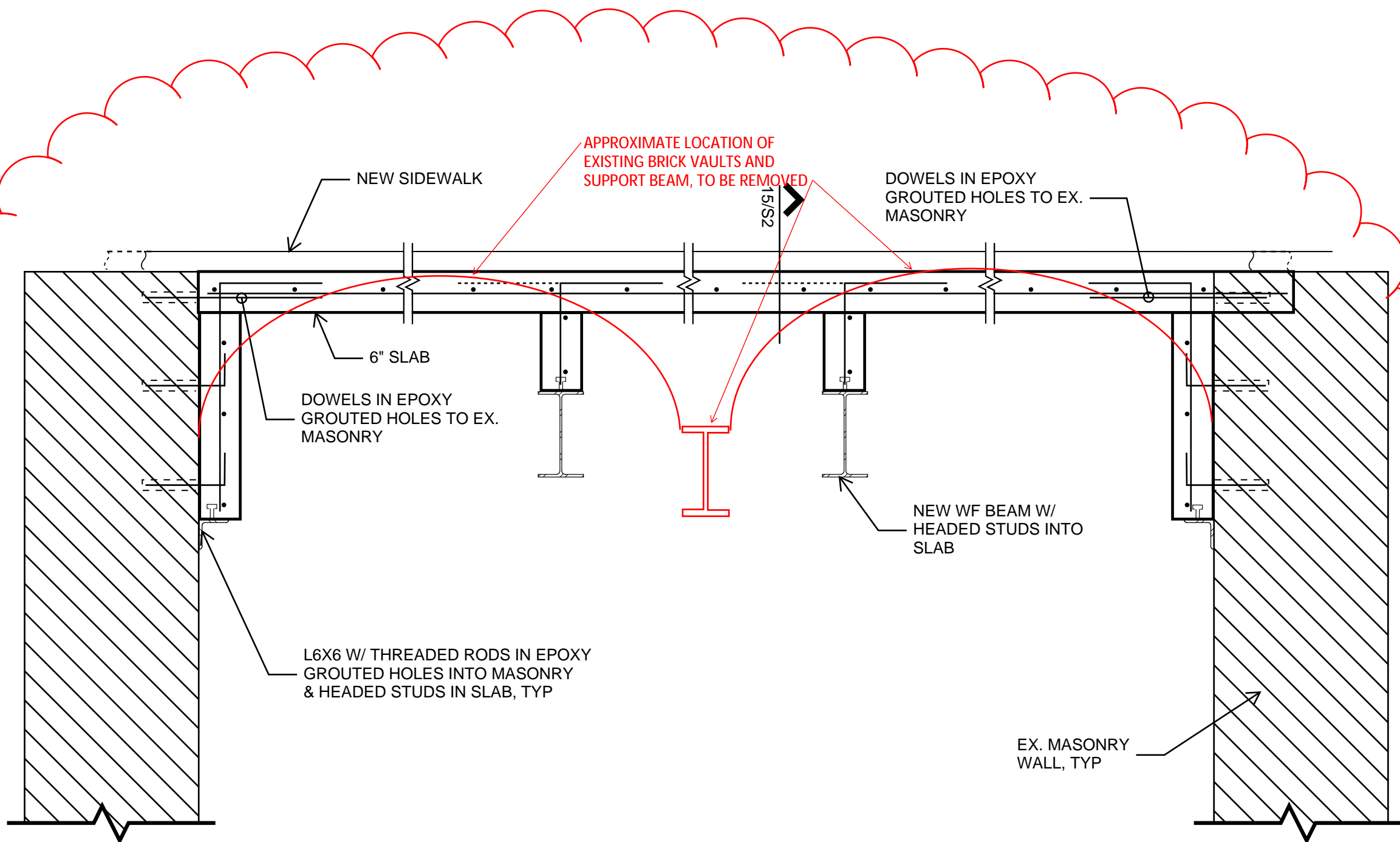
1

2



NOTE: DETAIL IS SHOWN FOR GENERAL SCOPE, FULL ENGINEERING WILL CLARIFY FINAL DETAIL INTENT

3



ALLEY WALL

EXISTING DEMISING WALL IN AREAWAY

SECTION - EAST-WEST
DIRECTION FACING STREET

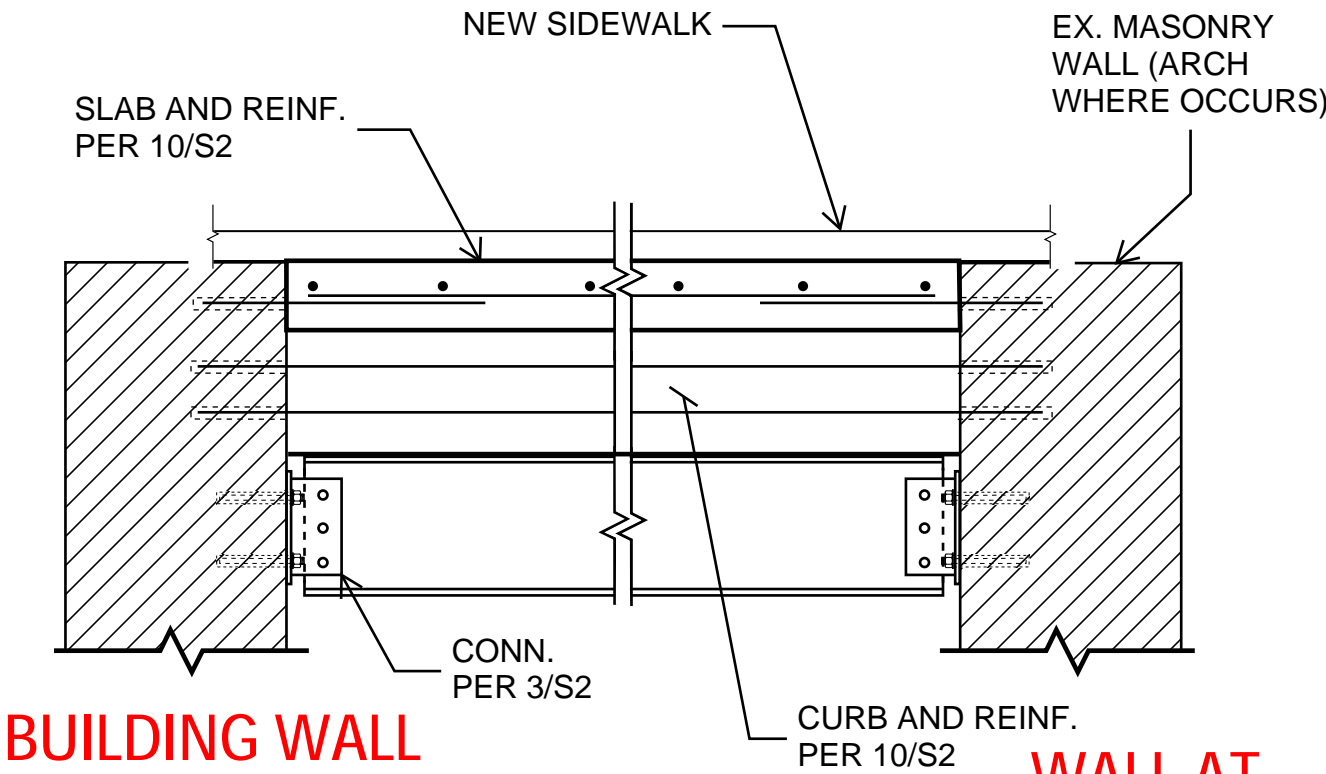
GRANITE CURB AT STREET AND ALLEY EDGE NOT SHOWN. GRANITE CURB TO REMAIN.

10

6

7

8



BUILDING WALL

WALL AT STREET EDGE

11

12

13

15