






93 Pike Street, Suite 201, Seattle, WA 98101



Colors		PMS	Paint/Sheen	Translucent Vinyl	Opaque Vinyl	Other
White		N/A	Natural White 42202 SP/Satin	White 230-20	Matte White 220-20	N/A
Yellow		134 C				
Red		2350 C			220 283	N/A



Day View



Night View



**NATIONAL
SIGN™**
CORPORATION

1541 S. 92nd Place, #B, Seattle, WA 98108
P: 206-282-0700
www.nationalsigncorp.com

CLIENT INFORMATION:

Pasta Casalinga
93 Pike Street, Suite 201,
Seattle, WA 98101

REPRESENTATIVE:

James Z

DESIGNER:

Pushkar


DATE:

2/03/25

REVISION:

1	
2	
3	
4	
5	
6	
7	
8	
9	

This is an original unpublished drawing, created by National Sign Corporation. It is not to be shown to anyone outside your organization, or to be used, reproduced, copied or exhibited in any fashion. Any usage beyond that granted to buyer herein shall require the separate payment of a design and engineering fee to National Sign Corporation.

 SIGN(S) TO BE MANUFACTURED TO U.L. SPECIFICATIONS AND WILL BEAR THE U.L. LABEL(S). INSTALL IN ACCORDANCE WITH NATIONAL ELECTRICAL CODES.

DESIGN NUMBER:

** V2

JOB NUMBER:

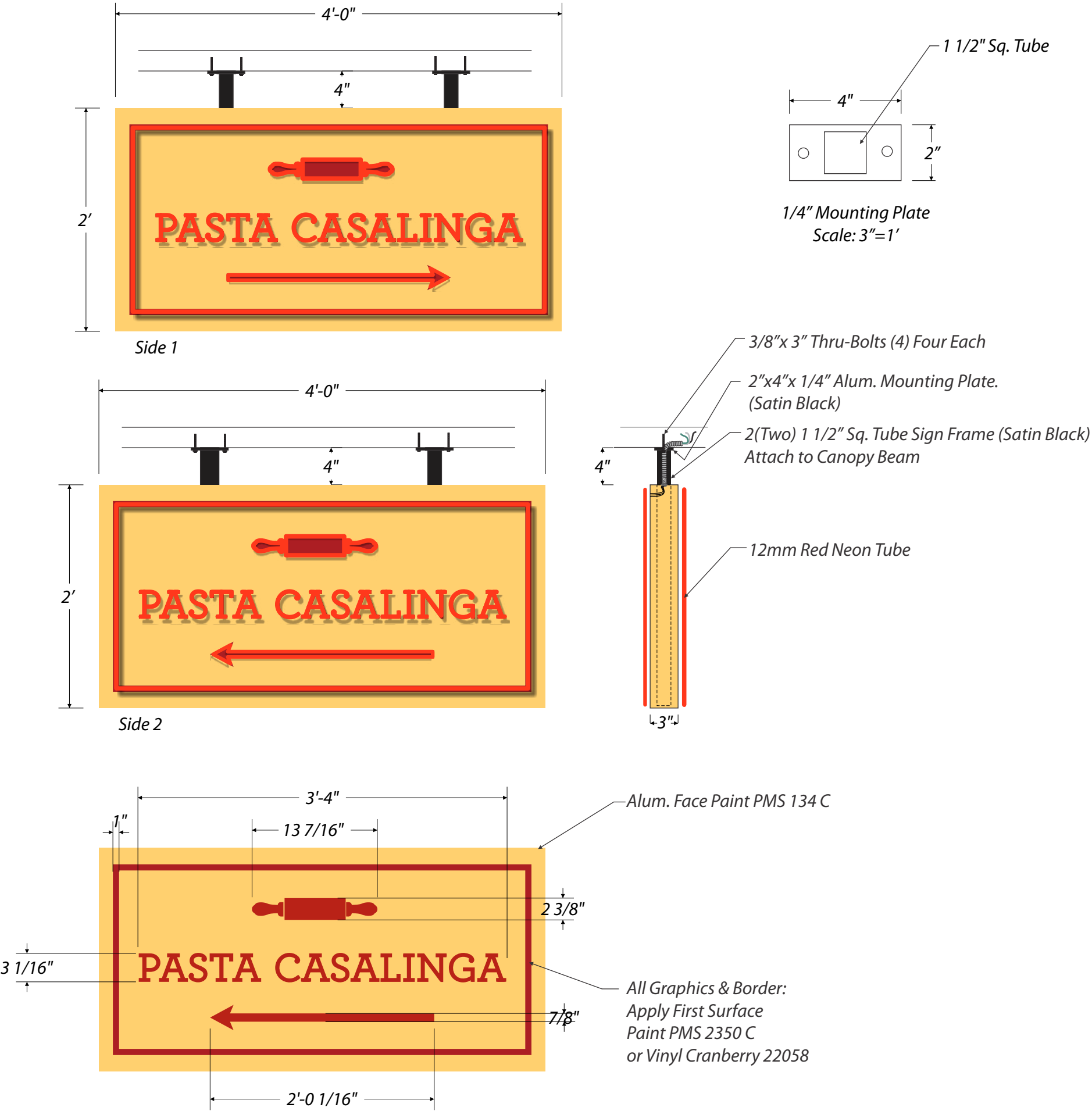
00000-MS

Elevations

Scale: 1"=1'



SIGN 1 - D/F CABINET NEON SIGN
Sign Sq. Ft.: 8 Sq. Ft



1541 S. 92nd Place, #B, Seattle, WA 98108
P: 206-282-0700
www.nationalsigncorp.com

CLIENT INFORMATION:
Pasta Casalinga
93 Pike Street, Suite 201,
Seattle, WA 98101

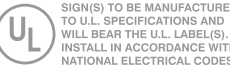
REPRESENTATIVE:
James Z

DESIGNER:
Pushkar

DATE:
2/03/25

REVISION:	
1	
2	
3	
4	
5	
6	
7	
8	
9	

This is an original unpublished drawing, created by National Sign Corporation. It is not to be shown to anyone outside your organization, or to be used, reproduced, copied or exhibited in any fashion. Any usage beyond that granted to buyer herein shall require the separate payment of a design and engineering fee to National Sign Corporation.

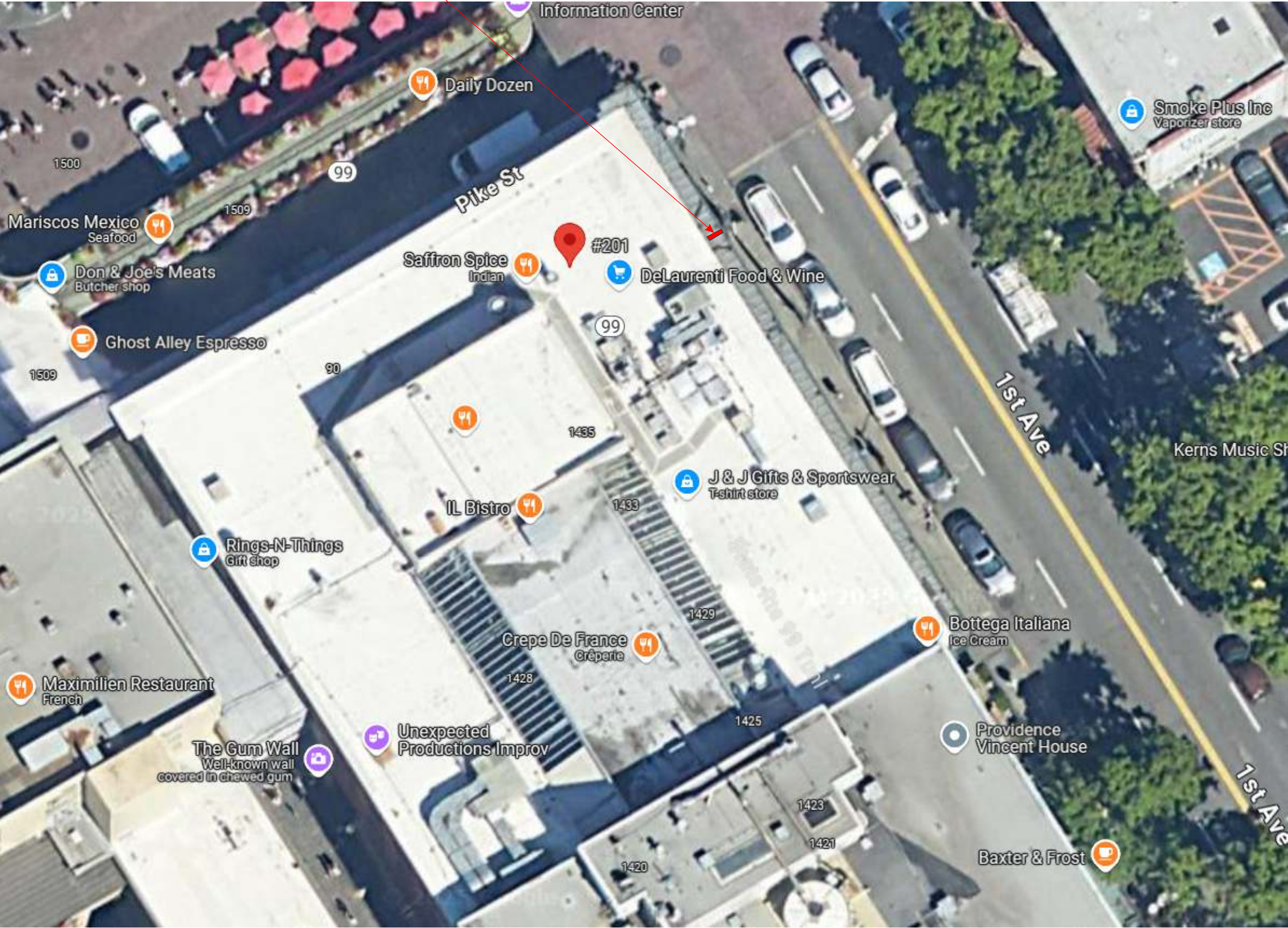


DESIGN NUMBER:
** V2

JOB NUMBER:
00000-MS

Elevations
Scale: 1"=1'

Sign Location



1541 S. 92nd Place, #B, Seattle, WA 98108
P: 206-282-0700
www.nationalsigncorp.com

CLIENT INFORMATION:
Pasta Casalinga
93 Pike Street, Suite 201,
Seattle, WA 98101

REPRESENTATIVE:
James Z

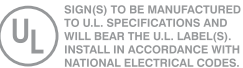
DESIGNER:
Pushkar

DATE:
2/03/25

REVISION:

1	
2	
3	
4	
5	
6	
7	
8	
9	

This is an original unpublished drawing, created by National Sign Corporation. It is not to be shown to anyone outside your organization, or to be used, reproduced, copied or exhibited in any fashion. Any usage beyond that granted to buyer herein shall require the separate payment of a design and engineering fee to National Sign Corporation.



DESIGN NUMBER:
** V2

JOB NUMBER:
00000-MS

Survey Information

