

THE BRICK BOOK

COLORS | TEXTURES | ASTM

Reds and Browns

COLOR*: Forest Blend

TEXTURE: Mission, Smooth, Rug[■]

TYPE: Stocking

PLANT: Columbia, OR

COLLECTION: The Heritage Collection

ASTM: ASTM C-216, SW, FBX

• *Due to the limitations of photography, the actual product shipped is not guaranteed to duplicate the image shown here. Final color and product selection should be made from actual samples.*

• [■] *Special Order Texture. May require a minimum order. Additional production time should be allowed.*

BRICK SIZE: STANDARD 2.5" TALL x 7.5" WIDE



Considering brick for your project?

For samples and ordering information, contact your Mutual Materials Sales Representative or call (888) 688-8250.



MUTUAL MATERIALS®
www.mutualmaterials.com



Quick Start

CMU 101

CMU Options

Spec's

Add'l Tools

View Sample Library

Contact

Home > View Sample Library > Northwest Division 4 Product Library > Mortar

Northwest Mortar Colors

Standard Colors



Charcoal Mortar
Standard - Type S



Cream Mortar
Standard - Type S



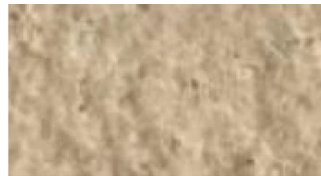
Light Bordeaux Mortar
Standard



Light Burgundy Mortar
Standard - Type S



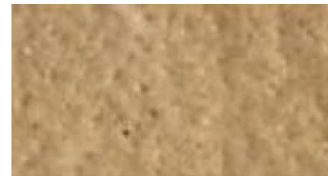
Light Charcoal Mortar
Standard - Type S



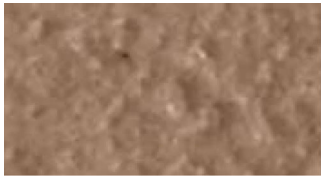
Light Cream Mortar
Standard - Type S



Light Goldenrod Mortar
Standard



Light Mesa Buff Mortar
Standard - Type S



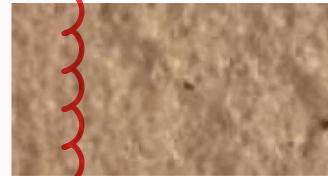
Light Mt. Brown Mortar
Standard



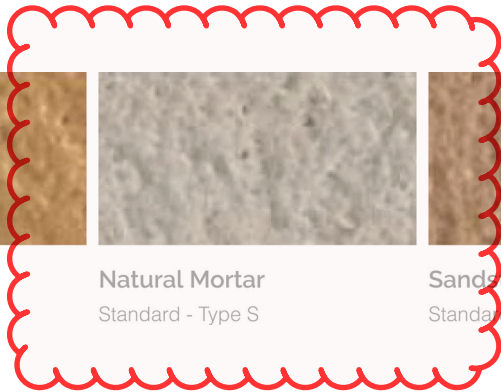
Mesa Buff Mortar
Standard - Type S



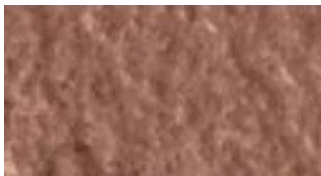
Natural Mortar
Standard - Type S



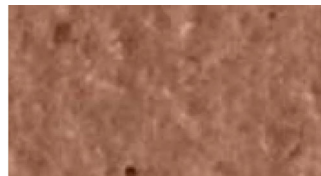
Sandstone Mortar
Standard - Type S



Premium Colors



Bordeaux Mortar
Premium



Burgundy Mortar
Premium - Type S



Chianti Mortar
Premium



Chianti Mortar
Premium - Type S

Product Data Sheet

PRODUCT NAME

Basalite Type S Masonry Mortar

MANUFACTURER

Basalite Concrete Products
605 Industrial Way
Dixon, CA 95620-9779
(800) 776-6690
(707) 678-1901
www.basalite.com

PRODUCT DESCRIPTION

BASIC USE

Basalite Type S Masonry Mortar is a contractor-grade mortar mix designed for:

- Concrete Masonry Units (CMU), brick, and stone
- Miscellaneous mortar joint repairs
- Tuck pointing mortar joints

COMPOSITION & MATERIALS

Basalite Type S Masonry Mortar is a pre-blended mixture of sand, cement, and lime formulated to meet ASTM C 270.

COLORS

Basalite Type S Masonry Mortar is stocked and available in gray and tan. Custom colors are available by special order.

WEIGHT

- 80 lb. (42.6 kg) bags
- 3000 lb. (1360 kg) super-sacks. (approximate weight)

TECHNICAL DATA

APPLICABLE STANDARDS

- ASTM C 270 Standard Specification for Mortar for Unit Masonry
- ASTM C 387 Standard Specification for Packaged, Dry, Combined Materials for Mortar and Concrete

TECHNICAL DATA

- Exceeds ASTM C 387 when used as directed
- Complies with ASTM C 270

Compressive Strength

28 day 1800 psi (12.4 MPa)

Water Retention

75%

Air Content

12% Maximum

INSTALLATION

PREPARATION

When laying new brick or block walls, first construct a sound footing below the frost line. When repairing mortar joints, remove all loose and foreign material. Dampen areas to be repaired just prior to application.

MIXING

Empty the contents into a mortar box, wheelbarrow, or mechanical mixer. When mixing by hand, form a crater for adding D. Consider ambient temperature and mixing conditions to achieve a workable, trowelable mix. Add water a little at a time. Avoid a soupy mix. Excess water reduces strength and durability and can cause cracking. In cold weather use warm water to accelerate the set. Use cool water to slow the set in hot weather. Re-tempering impairs performance.

PLACEMENT

When laying brick or block, butter the end with mortar before placing into a full bed of mortar. Tap into place while leveling. When tuck pointing mortar joints, place material in the joint with a pointing trowel and compact. Allow the newly placed material to set about 1 hour or until the surface is thumbprint hard before striking with a joint tool.

FINISHING

Dress mortar joints with a joint tool.

CURING

In hot weather, lightly dampen the material as needed to promote adequate curing. In cold weather, adequately cover and keep from freezing for a minimum of 24 hours.

PRECAUTIONS

- Re-tempering will lower strengths
- Not to be used as grout on traffic bearing surfaces
- Do not place when temperatures are below 40° F (4° C) Protect from freezing for 24 hours
- Variations in amount of mix water, mix time, curing conditions, and finishing will cause color variations.

STORAGE

Store material in a tightly closed container, off the floor in a dry place.

AVAILABILITY

Basalite Type S Mortar Mix is available at leading masonry and concrete construction supply houses and dealers. Contact Basalite Concrete Products for the name of the nearest dealer.

LIMITED PRODUCT WARRANTY

The manufacturer warrants that this product shall be of merchantable quality when used or applied in accordance with the manufacturer's instructions. This product is not warranted as suitable for any purpose other than the general purpose for which it is intended. This warranty runs for one (1) year from the date the product was purchased.



ANY IMPLIED WARRANTY OF MERCHANTABILITY OR FITNESS FOR A PARTICULAR PURPOSE ON THIS PRODUCT IS LIMITED TO THE DURATION OF THIS WARRANTY. Liability under this warranty is limited to replacement of defective product or, at the manufacturer's option, refund of the purchase price. CONSEQUENTIAL AND INCIDENTAL DAMAGES ARE NOT RECOVERABLE UNDER THIS WARRANTY.

CAUTION

WARNING! CAUSES IRRITATION- Avoid contact with eyes, skin and clothing. Wash thoroughly after handling. Exposure may result in irritation of the skin, eyes, or nasal passages from alkali in cement. When wet, contact with the skin or eyes may result in irritation or burns.

FIRST AID: In case of eye contact, flush immediately with plenty of water for at least 15 minutes and get prompt medical attention; for skin, wash thoroughly with plenty of soap and water.

HARMFUL IF INHALED – Avoid breathing dust. Keep container closed. Use with adequate ventilation. Excessive exposure by inhalation over an extended period of time may result in the development of pulmonary diseases including pneumoconiosis and silicosis. Crystalline silica has been classified by IARC and NTP as a carcinogen.



All national, state, and local building code requirements must be followed and where they are more stringent than the Reveal® Panel System installation requirements, state and local requirements will take precedence.

Document Scope

This document applies to the Reveal® Panel System. The use of this product is limited to buildings not exceeding 85 feet in height.

General Description

Reveal Panel System is a noncombustible fiber-cement panel siding, manufactured by James Hardie Building Products Inc.

Product Dimensions

Thickness – 7/16 inch Length – 95½ inches Width – 47½ inches

Product Composition

Reveal panels used in the Reveal Panel System are a *Grade II, Type A*, fiber-cement flat sheet as defined by ASTM C 1186. The panels are manufactured by the Hatschek process and cured by high pressure steam autoclaving.

Code Compliance

Reveal Panel System complies with:

- The 2006, 2009, 2012, and 2015 International Building Code® (IBC) Section 1404.10 and 2006, 2009, 2012, and 2015 International Residential Code® (IRC) Table R703.4 and Section R703.10.1 as ASTM C 1186 Grade II, Type A (ISO 8336, Category A, Class 2) Fiber Cement.

Wind Design:

- Design Tables 2 and 3 provide allowable capacity in mph for transverse load conditions for the Reveal Panel System attached to either wood framing, wood furring, metal framing, metal hat channel, metal or z-girl, tested in accordance to ASTM E 330.
- Wood framing and furring shall have a specific gravity of 0.42 or greater unless otherwise stated.
- Metal framing and furring shall be a minimum of 20 gauge (33 mil) structural to a maximum of 16 gauge (54 mil).

Fire Characteristics:

- Reveal Panel System is classified as noncombustible when tested in accordance with ASTM E136.
- Reveal Panel System may be used in ASTM E119 fire resistance rated assemblies as listed by Warnock Hersey (for more information, contact James Hardie at 1-888 J-HARDIE (1-888 542-7343) or info@JamesHardie.com): 60 minute designs JH/FCS 60-01, JH/FCS 60-02, and JH/FCS 60-03. 120 minute designs JH/FCS 120-01 and JH/FCS 120-02.
- Reveal Panel System are Class A material according to 2006, 2009, 2012, and 2015 IBC Section 803.1.1. Surface burning characteristics in accordance with ASTM E 84: Flame Spread Index = 0 and Smoke Developed Index ≤ 5.
- The building official reserves the right to approve alternate materials, design and methods of construction based on research reports and/or tests based on 2006, 2009, 2012, and 2015 IBC Section 104.11, 2006, 2009, 2012, and 2015 IRC Section R104.11.
- Test reports can be furnished to the building official upon request, contact your local James Hardie sales representative.

Installation Requirements

- Reveal Panel System shall be installed on exterior walls braced in accordance with the applicable building code.
- A water-resistive barrier complying with Section 1403.2 of the IBC or Section R703.2 of the IRC is required to be installed.
- Install the Reveal Panel System in accordance with this report and the James Hardie published installation requirements. For a copy contact your local James Hardie sales representative or visit www.JamesHardiePros.com.

Table 1, Reveal Panel System ASTM C 1186 Physical Properties and Supplementary Requirements

Warnock Hersey
AUTHORIZATION TO
MARK



Intertek
LISTED

Client # 8518,
17832

Intertek

	ASTM Test Method	General Property	Unit or Characteristic	Requirement	Result
Physical Attributes	ASTM C1185	Dimensional Tolerances	Length	± 0.5% or ±1/4 in	Pass
			Width	± 0.5% or ±1/4 in	
			Thickness	± 0.04 in	
			Squareness	<1/32 in/ft of length	
			Edge Straightness	<1/32 in/ft of length	
ASTM C1185	Density, lb/ft ³		As reported	<75	
ASTM C1185	Water Tightness	Physical Observations	No drop formation	Pass	
Durability	ASTM C1185	Flexural Strength	Wet conditioned, psi	>1015 psi	Pass
			Equilibrium conditioned, psi	>1450 psi	
	ASTM C1185	Warm Water Resistance, Observations	Physical Observations	No visible cracks or structural alteration	Pass
	ASTM C1185	Heat/Rain Resistance	Physical Observations	No visible cracks or structural alteration	Pass
	ASTM C1185	Freeze/Thaw Resistance	Physical Observations Mass Loss, % Freeze/Thaw, % strength retention	No visible cracks or structural alteration ≤ 3.0% ≥ 80%	Pass
ASTM G23	UV Accelerated Weathering Test	Physical Observations	No cracking, checking, or crazing	Pass	
Fire Characteristics	ASTM E84	Surface Burning Characteristics	Flame Spread Index (FSI)	0	
			Smoke Developed Index (SDI)	≤ 5	
			Fuel Contributed	0	
	ASTM E136	Noncombustibility	Noncombustible	As reported	A 1 A Pass



All national, state, and local building code requirements must be followed and where they are more stringent than the Reveal® Panel System installation requirements, state and local requirements will take precedence.

Table 2, Wind Design Table, Exposed Fastening

Allowable Wind Speed (mph) for Reveal Panel System (Analytical Method in ASCE 7-10 Chapter 30 C&C Part 1 and Part 3)6

2015 IBC & IRC
2012 IBC
(Ultimate Design Wind Speed, V_{ult} ³)

2012 IRC
2009, 2006 IBC & IRC⁷
(Basic Wind Speed, V_{asd} ⁴)

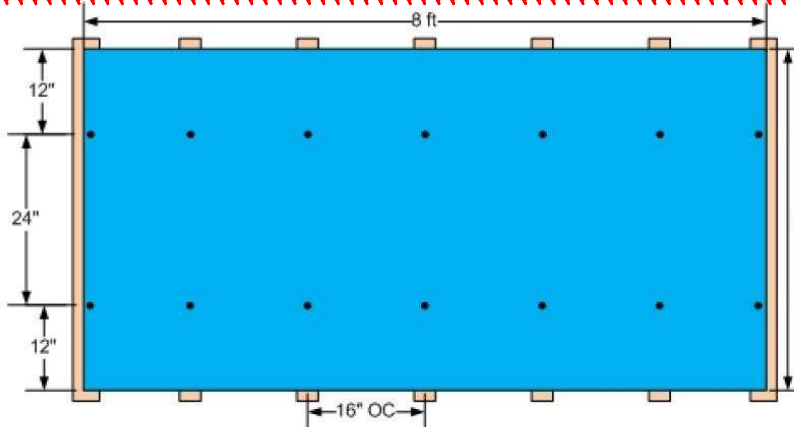
Product	Product Thickness (in.)	Width (in.)	Fastener Type	Fastener Spacing	Frame Type	Stud Spacing (in.)	Allowable Design Load (psf)	Building Height ^{2,5} (ft.)	Wind exposure			Wind exposure		
									B	C	D	B	C	D
Reveal Panel System	7/16	47.5	No. 10-12 x 1.5 in long x 0.472 in head diameter button head screw	Configuration 1 (Exposed) [2 screws measuring 12" from panel edge]	2x4 wood (SPF) + wood furring (3/4" thick x min 1-1/2" wide) ^{8,9}	16	42.5	0-15	172	156	141	133	121	110
								20	172	151	138	133	117	107
								25	172	148	136	133	115	105
								30	172	145	133	133	112	103
								35	168	143	132	130	111	102
								40	165	141	130	128	109	101
								45	162	139	129	125	108	100
								50	159	137	127	124	106	99
								55	158	136	126	122	106	98
								60	156	135	125	121	105	97
								65	137	120	111	106	93	86
								70	136	119	111	105	92	86
								75	134	118	110	104	91	85
Reveal Panel System	7/16	47.5	No. 10-12 x 1.5 in long x 0.472 in head diameter button head screw	Configuration 2 (Exposed) [3 screws measuring 8" from panel edge and one screw equidistant in center]	2x4 wood (SPF) + wood furring (3/4" thick x min 1-1/2" wide) ^{8,9}	16	68.7	0-15	218	198	180	169	153	139
								20	218	192	176	169	149	136
								25	218	188	172	169	146	134
								30	218	184	169	169	143	131
								35	214	182	167	165	141	130
								40	209	179	165	162	139	128
								45	206	177	164	160	137	127
								50	203	175	162	157	135	125
								55	200	173	161	155	134	124
								60	198	172	159	153	133	124
								65	175	152	141	135	118	109
								70	173	151	141	134	117	109
								75	171	149	140	132	116	108
80	169	148	139	131	115	107								
Reveal Panel System	7/16	47.5	No. 10-12 x 1.5 in long x 0.472 in head diameter button head screw ¹	Configuration 3 (Exposed) [3 screws measuring 8" from panel edge and one screw equidistant in center]	Minimum 20 gauge Steel (studs, z-girts or hat channel)	16	56.3	0-15	197	179	163	153	139	126
								20	197	174	159	153	135	123
								25	197	170	156	153	132	121
								30	197	167	153	153	129	119
								35	193	164	151	150	127	117
								40	190	162	150	147	125	116
								45	186	160	148	144	124	115
								50	184	158	147	142	123	114
								55	181	157	145	140	121	113
								60	179	155	144	139	120	112
								65	158	138	128	123	107	99
								70	156	136	127	121	106	99
								75	155	135	127	120	105	98
80	153	134	126	119	104	97								
85	152	133	125	118	103	97								



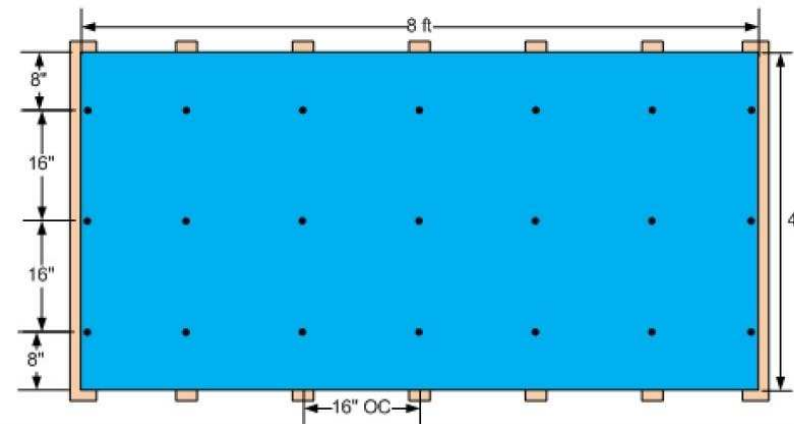
Reveal® Panel System

All national, state, and local building code requirements must be followed and where they are more stringent than the Reveal® Panel System installation requirements, state and local requirements will take precedence.

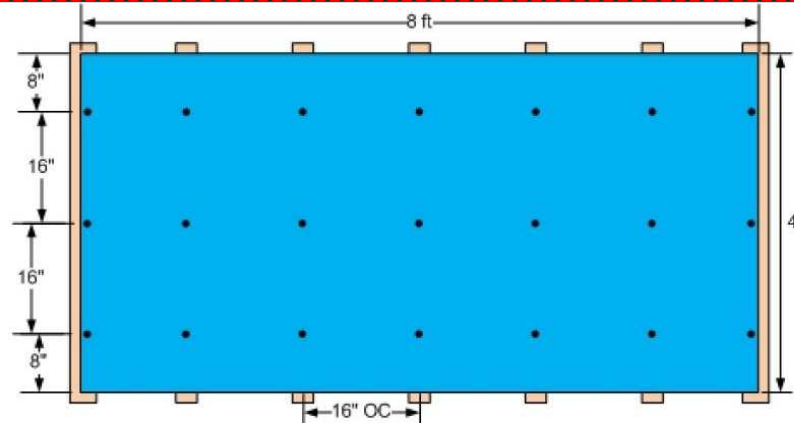
Figure 1, Fastening Configurations, Exposed Fastening



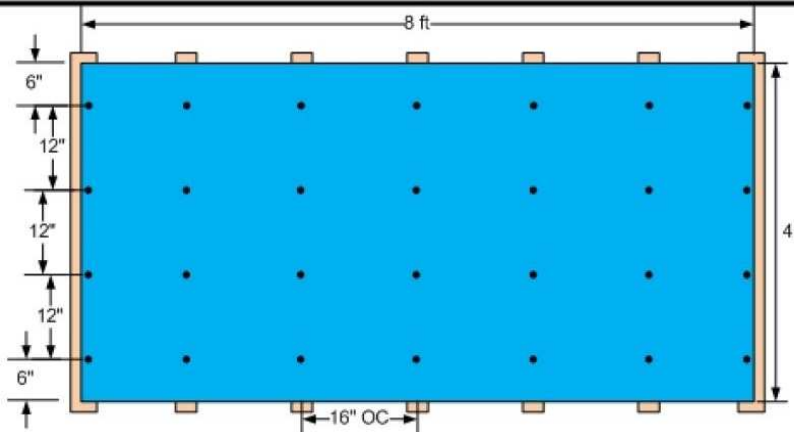
Configuration 1 (Exposed): 16" OC Wood Stud Frame – Low Wind Load Design



Configuration 2 (Exposed): 16" OC Wood Stud Frame – High Wind Load Design



Configuration 3 (Exposed): 16" OC Steel Stud Frame – Low Wind Load Design



Configuration 4 (Exposed): 16" OC Steel Stud Frame – High Wind Load Design

RYTEC

HIGH PERFORMANCE DOORS

SPIRAL® LP

HIGH PERFORMANCE LOW PROFILE ROLLING DOOR

MATCH ADJACENT
SIDING FOR COLOR. SEE
EXTERIOR ELEVATIONS

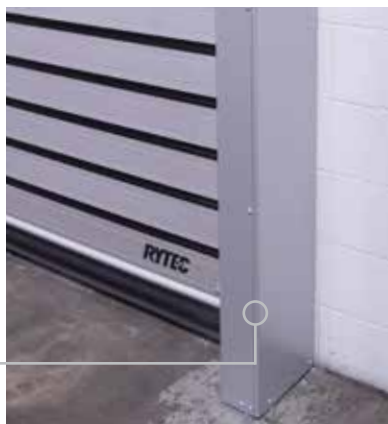
SPIRAL® LP

Proven Technology with a Low Profile Side Column and Headroom Configuration

The Spiral® LP (Low Profile) offers the same durability and quality as other Rytec Spiral® Series doors but features a low profile side column and headroom configuration that results in reduced clearances. The reduced profile allows the Spiral LP to fit into even tighter spaces than other models in locations where conventional sectional and rolling steel doors are often found. Parking, commercial and other structures that require security within limited space may now fully benefit from high-performance door functionality. Features include durable, rigid aluminum slat construction and rubber weatherseals that provide a tight seal and resilience to environmental conditions.

With anodized aluminum slats that will not corrode, Rytec quality and durability can be counted on along with an appearance that will last for many years, even under the worst weather conditions. Also available are models designed with 9-inch tall full-vision (Spiral® LP-FV) or full-ventilation (Spiral® LP-VT) slats. Ideal for parking and other commercial, institutional and residential applications.

Low Profile
Side Columns



Solid Security

- Double walled aluminum slats
- Integral rubber weatherseal
- Continuous heavy-duty hinge system

Low Clearance & Headroom

- Low profile side columns require only 6.5 inches of side room clearance
- The low lintel design requires only 10 inches of headroom clearance

Ultra Quiet

- High-performance technology and low headroom track offer a quiet and unobtrusive operation

Unparalleled Performance

- Variable speed AC drive system - with soft acceleration and deceleration - smooths out routine stops and starts

Energy Efficient & Tight Seal

- Aluminum slats and durable rubber membrane provides a 100% seal against dust, drafts and inclement weather

QUALITY. PERFORMANCE. RELIABILITY.

RYTECDOORS.COM

SPIRAL[®] LP

HIGH PERFORMANCE LOW PROFILE ROLLING DOOR



Size/Dimensions

- Maximum width up to 20' for solid slats and 18' for full-vision (Spiral[®] LP-FV) or full-ventilated (Spiral[®] LP-VT) models
- Maximum height up to 12'; consult factory for other sizes

[SIZE PER DOOR SCHEDULE](#)

Travel Speed

- Opening speed up to 36 inches per second

Track and Operation

- Low headroom track design allows door to fit in areas with as little as 10 inches of clearance above the door opening
- Low profile side columns requiring only 6.5 inches of clearance from floor to top of door
- Compact, variable speed motor with soft acceleration, deceleration and braking for smooth starts and stops
- Quiet, low maintenance spring-less operation



Variable speed motor

Electrical Controls

- System 4[®] controller housed in a NEMA 4X rated enclosure with factory set parameters
- Intelligent processor monitors and controls door operation
- Advanced self-diagnostics for troubleshooting

System 4 shown with optional rotary disconnect



Panel Design

- Integral rubber weatherseal between the slats provides a tight weatherseal across the entire panel
- Patented hinge design allows for removal and replacement of individual slats without disassembling the door panel

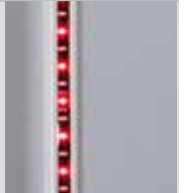


Integral rubber weatherseal

Safety is Standard

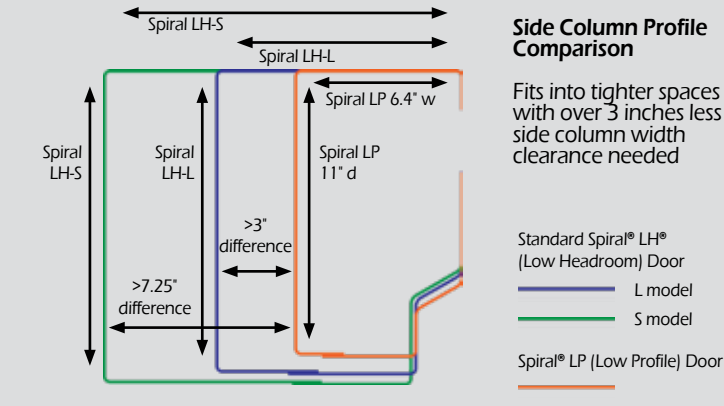
- Advanced³ Light Curtain Safety System
- Pathwatch[®] Safety Light System
- Electric reversing edge
- Ry-Wi[®] Wireless System

Pathwatch warning lights red when closing, amber when about to close



Warranty

- Five-year limited warranty on materials and components
- Two-year limited warranty on electrical components



Architectural Styling

- Sleek double-walled aluminum slats are 6 inches high with an integral weatherseal between each panel
- Durable 'Rytec silver' powder coated finish* is UV-stable and resists rust, corrosion and fingerprints

Spiral[®] door with solid slats



Options [ADD OPTIONAL VENTILATE SLATS HIGH ON DOOR FOR LOADING/TRASH VENTILATION](#)

- Insulated, ventilated or vision slats
- Powder coated finish also available in RAL classic colors or custom match
- Multiple door activation options available; contact factory for details



Solid and vision slats shown

Standard maximum sizes shown; larger sizes may be available upon request.

*Side columns

American Owned, American Made



◀ Watch All Rytec Testimonials

Specifications subject to change
© 2020 Rytec Corporation LIT011420

RytecDoors.com
888-GO-RYTEC

info@rytecdoors.com
P: 262.677.9046 F: 262.677.2058
One Cedar Parkway, PO Box 403
Jackson, WI 53037-0403



Endurance Series

Commercial Mid-rise Windows Designed to Outlast the Rest

Endurance—the Optimum in Mid-rise Performance

If you are building a mid-rise structure in the Western United States, you are probably specifying the *Endurance Series by VPI Quality Windows*. In a world where demanding specifications and uncompromising job site testing is the way of life, a commercially rated window is the only acceptable solution, as residential windows leave room for unwanted risk. VPI prides itself on superior product performance ratings in the lab and the field. These are the result of our engineering centric organization that is obsessive with safety, quality & customer service, day-in and day-out.

- Commercial profile design coupled with industry leading glazing system delivers the right balance of aesthetics & performance, at a great value
- Our manufacturing process is systematic, documented, controlled and constantly improving
- Structural performance & deflection are enhanced by commercial grade metal reinforcements interconnected throughout the window assembly
- Endless configuration possibilities with fixed, awning and/or casement windows, thanks to an intersecting integral bar system, all assembled within continuous frames – no mulling nightmares!
- Durable, co-extruded acrylic exterior finishes allow for color diversity without compromising structural and thermal performance
- Panel level window design that optimizes water intrusion and air infiltration/ex-filtration

The evolution is complete for mid and high rise commercial and mixed use applications, the future belongs to the Endurance Series window system!

Specify the ideal mix of strength, energy performance and aesthetics with Endurance!

ENDURANCE
SERIES



VPI Quality Windows manufactures ENERGYSTAR® qualified products, that use less energy.

Commercial-Rated Performance:

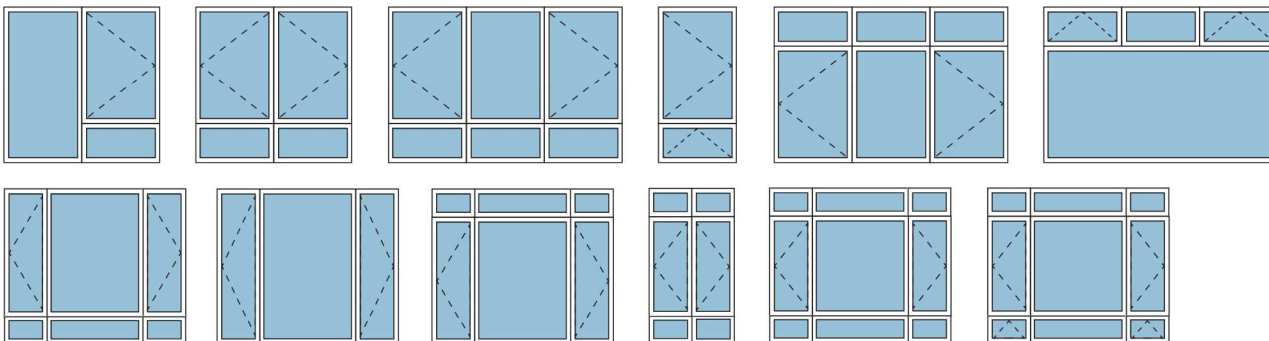
Engineered for Mid-Rise Construction

SEE DRAWINGS FOR WINDOW SIZES, CONFIGURATIONS AND FUNCTIONS

PRODUCT		PERFORMANCE						
Casement/Awning	Test Size	AAMA	Infil	Exfil	Water	U-Factor*	SHGC*	VT*
Awning	46" x 32"	CW-PG60	<0.01	<0.01	9.20	0.26	0.18	0.42
Casement	36" x 60"	CW-PG70	<0.01	<0.01	10.66	0.26	0.18	0.42
Fixed	72" x 96"	CW-PG40	<0.01	<0.01	6.04	0.26	0.22	0.51
CPC	96" x 66"	CW-PG70	0.06	0.06	10.66	0.26	0.18	0.42
CPC-AT	108" x 96"	CW-PG40	0.16	0.11	6.04	0.26	0.18	0.42
CP-UT	72" x 78"	LC-PG60	<0.01	<0.01	9.20	0.26	0.18	0.42
Sliding	Test Size	AAMA	Infil	Exfil	Water	U-Factor	SHGC	VT
X0	71" x 56"	LC-PG50	0.08	0.07	7.52	0.28	0.22	0.51
XOX	108" x 66"	LC-PG50	0.05	0.04	7.52	0.28	0.22	0.51
XOXAT	108" x 96"	LC-PG50	0.05	0.04	7.52	0.28	0.22	0.51
SH	56" x 96"	CW-PG30	0.09	0.07	5.43	0.27	0.22	0.51
SH-AU	44" x 108"	LC-PG55	0.04	0.03	8.36	0.27	0.22	0.51
SH-PW-SH	108" x 96"	CW-PG30	0.06	0.05	6.90	0.27	0.22	0.51

* Assumes Cardinal LoE 366

Some select configurations. Bring us your designs.



PRODUCT	Window Type	Glass Configuration	Spacer Size	Argon	Lami	STC	OITC
AWN/CAS		1" - (1/4" - 0.030" - 1/2" AS - 1/4")	0.500	Yes	0.030	36	30
PW		1-3/8" - (1/4" - 0.030" - 13/16" AS - 9/32" - 0.060")	0.813	Yes	0.030/0.060	38	29
AWN-U		1-3/8" - (1/4" - 0.030" - 7/8" AS - 1/4" - 0.030")	0.875	Yes	0.030	41	33
X0		1" - (3/16" - 9/16" AS - 1/4" - 0.030")	0.563	Yes	0.030	36	29
SH		1" - (1/4" - 0.030" - 9/16" AS - 3/16")	0.563	Yes	0.030	35	29

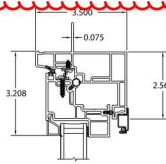
Standard Configuration Features:

- **COMPRESSION-SEAL DESIGN** enhances protection against water intrusion, air infiltration, and allows ease of glass replacement
- **VINYL FRAMES** Increase thermal performance, add color options, and reduce condensation
- **FRAME AND SASH** have hollow compartments that allow for optimal reinforcement required in heavy commercial applications
- **FUSION WELDED CORNERS** provide environmental comfort and protect against leaks
- **AVAILABLE MULTIPLE LOCKING POINTS** ensure security and provide a triple weather seal for superior air and water resistance
- **EASY TO OPERATE HARDWARE** delivers a wide opening for emergency egress and cleaning
- **T-BAR** allows for freedom of design while maintaining structural and thermal performance

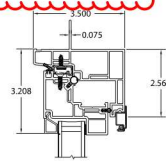
Selected CAD Details

CAD files in DWG and PDF format and specifications for most products can be downloaded from www.VPIwindows.com/cad

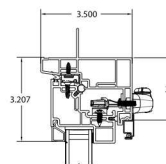
Casement Awning 3 1/2" Frame Depth



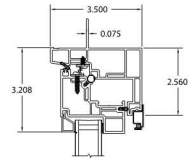
Casement Horizontal



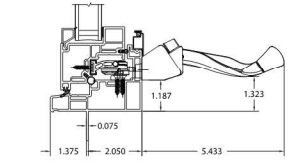
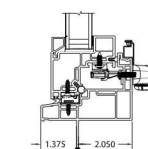
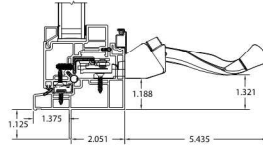
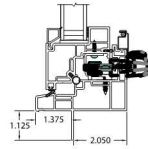
Casement Vertical



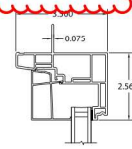
Awning Horizontal



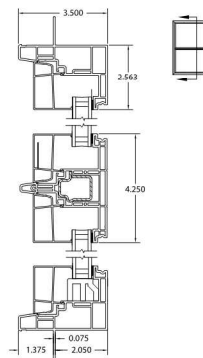
Awning Vertical



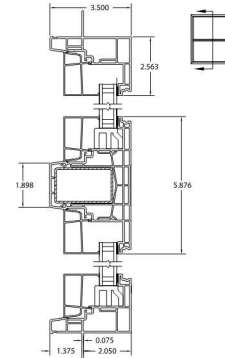
Fixed Window 3 1/2" Frame Depth



Picture Window Vertical
Available with IGUs 3/4" - 1-1/4" OA

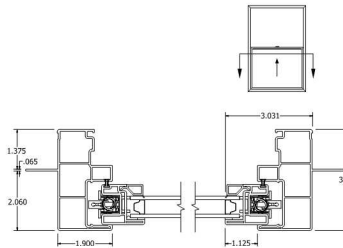


Picture Window Vertical
with Narrow T-bar

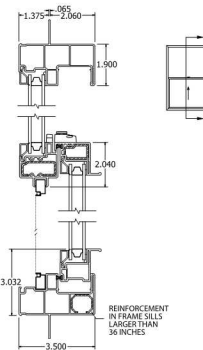


Picture Window Vertical
with Wide T-bar

Single Hung 3 1/2" Frame Depth



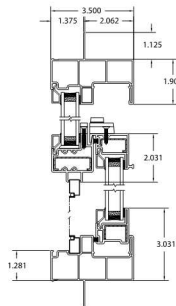
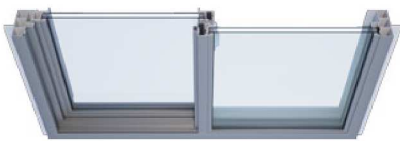
Single Hung Upper Horizontal Section



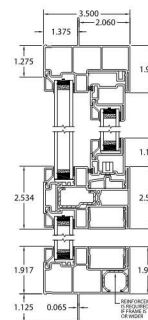
Single Hung Operable Vertical Section

REINFORCEMENT
IN FRAME SILLS
LARGER THAN
36 INCHES

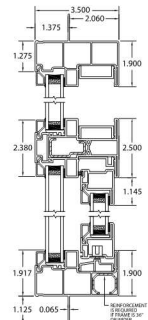
Horizontal Slider 3 1/2" Frame Depth



Horizontal Slider



Horizontal Slider
Above Fixed



Horizontal Slider
Below to Fixed

1995 CSI SECTION 08411 Aluminum-Framed Storefront
2004 CSI SECTION 08 41 13 Aluminum-Framed Entrance and Storefront
(Window Walls/Ribbon Walls)

Part 1 – General

1.01 Summary

- A. Section includes:
 - 1. Aluminum-Framed Storefront
 - a. Arcadia, Inc., AG451T Series, 2" x 4-1/2" Thermally broken; center glazed system, screw spline, shear block, compensating stick or punched opening fabrication for 1" glass.
- B. Related Sections:

1.02 References

- A. American Architectural Manufacturers Association (AAMA)
- B. American Society for Testing and Materials (ASTM)
- C. Aluminum Association (AA)

1.03 System Description

- A. General: In addition to requirements shown or specified, comply with:
 - 1. Applicable provisions of AAMA Aluminum Storefront and Entrance Manual for design, materials, fabrication and installation of component parts.
- B. Design Requirements: Arcadia AG451T Series is a framing system that provides for flush glazing on all sides without projected stops, with glass in the center of the frame. Framing system suitable for outside or inside glazing.
- C. Performance Requirements:
 - 1. Limit air leakage through assembly to 0.06 CFM/min/sq. ft. (.00003 m³/sm²) of wall area at 6.24 PSF (300 Pa) as measured in accordance with ASTM E283.
 - 2. Water Resistance: No water leakage when measured in accordance with ASTM E331 with a static test pressure of 8 PSF(383 Pa).
 - 3. Limit mullion windload deflection of L/175 with full recovery of glazing materials, when measured in accordance with ASTM E 330.
 - 4. System shall not deflect more than 1/8" at the center point, or 1/16" at the center point of a horizontal member, once deadload points have been established.
 - 5. System shall accommodate expansion and contraction movement due to surface temperature differential of 180 degrees F.
 - 6. Seismic testing shall conform to AAMA recommended static test method for evaluating performance of curtain walls and storefront wall systems due to horizontal displacements associated with seismic movements and building sway.
 - 7. Thermal Performance – When tested in accordance with AAMA 1503.1 the following results should be attained: U-Maximum .63/CRF – minimum of 59.
 - 8. National Fenestration Rating Council (NFRC) specific application evaluation.

1.04 Quality Assurance

- A. Single Source Responsibility:
 - 1. Obtain entrances, storefronts, ribbon walls, window walls, curtain walls, window systems, and finish through one source from a single manufacturer.
- B. Provide test reports from AAMA accredited laboratories certifying the performances as specified in 1.03.

1.05 Warranty

- A. System shall be warranted against failure and/or deterioration of metals due to manufacturing process for a period of two (2) years.

Part 2 – Products

2.01 Manufacturers

- A. Acceptable Manufacturers:
 - 1. Arcadia, Inc., 2301 E Vernon, Vernon, CA. Telephone 323/269-7300, Fax 323/269-7390.
- B. Acceptable Products:
 - 1. Arcadia, Inc., AG451T Series.

2.02 Framing Materials and Accessories

- A. Framing members, transition members, mullions, adaptors, and mounting: Extruded 6063-T6 aluminum alloy (ASTM B221 – Alloy G.S. 10a T6).
- B. Screws, fastening devices, and internal components: Aluminum, stainless steel, or zinc-plated steel in accordance with ASTM A-164. Perimeter anchors shall be aluminum or steel, providing the steel is properly isolated from aluminum.
- C. Glazing Gasket
 - 1. Compression-type design, replaceable, molded or extruded, or ethylene propylene diene monomer (EPDM).
 - 2. Shall be of type that locks securely into the glazing reglet to prevent glazing gaskets from disengaging.

2.03 Finish

- A. Finish all exposed areas of aluminum and components as indicated.
 - 1. An Architectural Class II or I color anodic coating conforming with AA-M12C22A34/AA-M12C22A44.
 - a. Anodized finish color shall be Colornodic _____, (AB1 Light Champagne, AB2 Champagne, AB3 Light Bronze, AB4 Medium Bronze, AB5 Standard Medium Bronze, AB6 Dark Bronze, AB7 Standard Dark Bronze, AB8 Black.)
 - (or) 1. An Architectural Class II or I anodic coating conforming with AA-M12C22A31/AA-M12C22A41.
 - a. Anodize finish color shall be Colornodic _____ (#11 Clear)
 - (or) 1. Fluorocarbon Coating: AAMA 2605.
 - a. Resin: 70% PVDF Kynar 500/Hylar 5000.
 - b. Substrate: cleaned and pretreated with chromium phosphate.
 - c. Primer: Manufacturer's standard resin base compatible coating. Dry film thickness.
 - (a) Extrusion: Minimum 0.20 mil.
 - d. Color Coat: 70% PVDF, dry film thickness.
 - (a) Extrusion: 1.0 mil.
 - e. Color: As selected by Architect.
 - f. Acceptable Coatings Manufacturers:
 - (a) PPG Industries, Inc.
 - (b) Valspar Corporation

2.04 System Fabrication

- A. Continuous sub-sill shall be provided under sill members to collect water infiltration and divert from the interior of the system.
- B. Framing members shall be internally reinforced and secured at head and sill as necessary for structural performance requirements, for hardware attachment, and as indicated.
- C. Fasteners shall be so located as to ensure concealment from view in the final assembly.

Part 3 – Execution

3.01 Examinations

- A. Examine conditions and verify substrate conditions are acceptable for product installation.

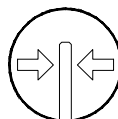
3.02 Installation

- A. Install in accordance with approved shop drawings and manufacturers installation instructions.

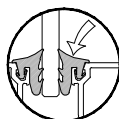
3.03 Field Quality Control

- A. Test the storefront for water leaks in accordance with AAMA 501.2. Conduct test in the presence of the Architect. Correct deficiencies observed as a result of this test.

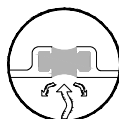
END OF SECTION



Center Glazed



Top Load



Thermal

AG451T Series

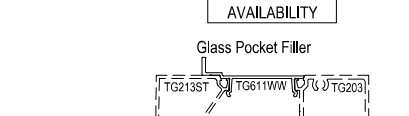
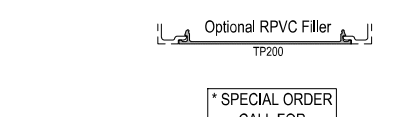
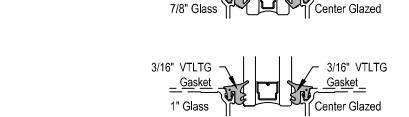
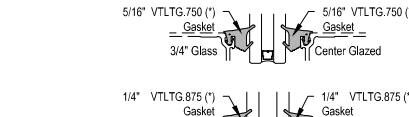
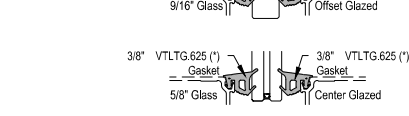
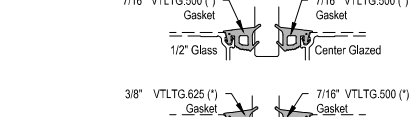
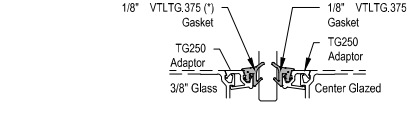
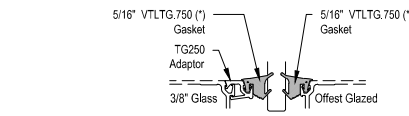
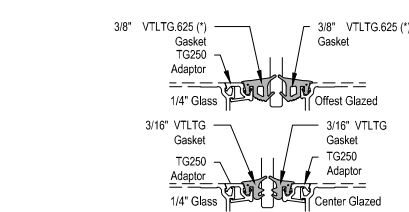
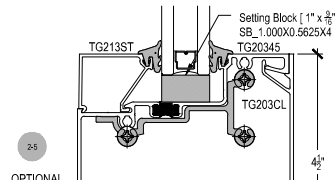
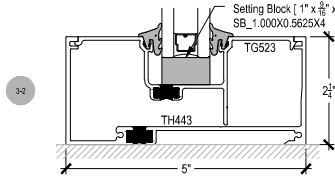
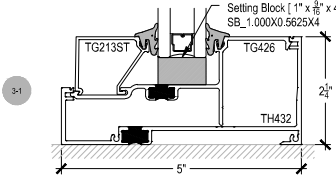
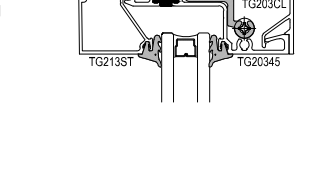
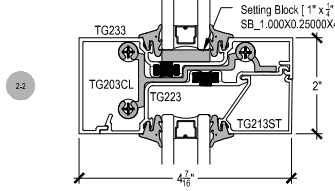
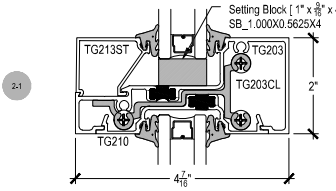
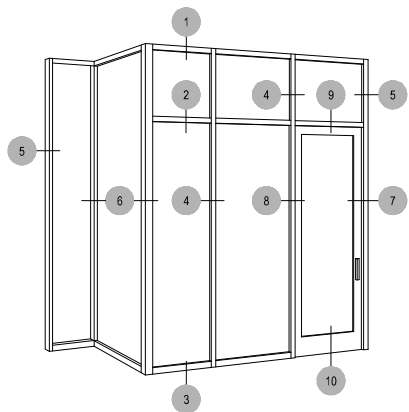
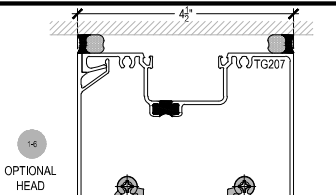
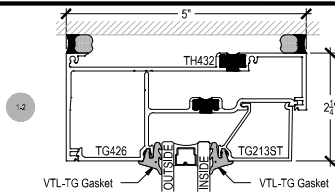
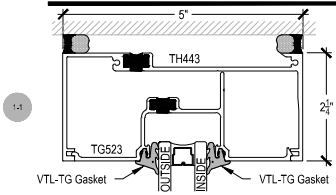
Description: 2" x 4 1/2" Center Glazed for 1" Glass

Function: Storefront

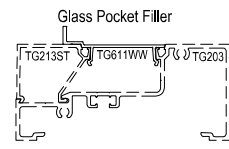
Detail: Horizontals

Scale: 3" = 1'-0"

SHEET 1 OF 3



* SPECIAL ORDER CALL FOR AVAILABILITY

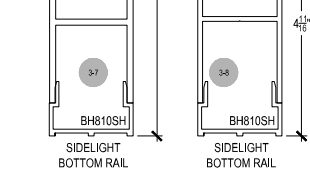
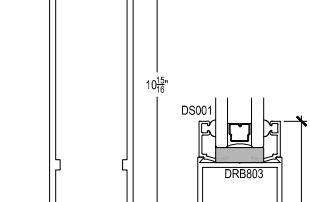
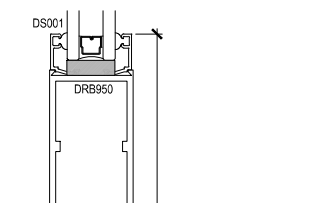
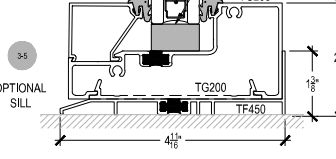
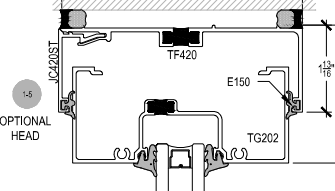
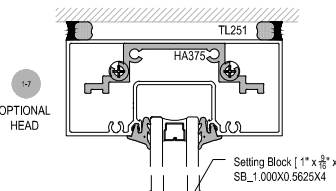
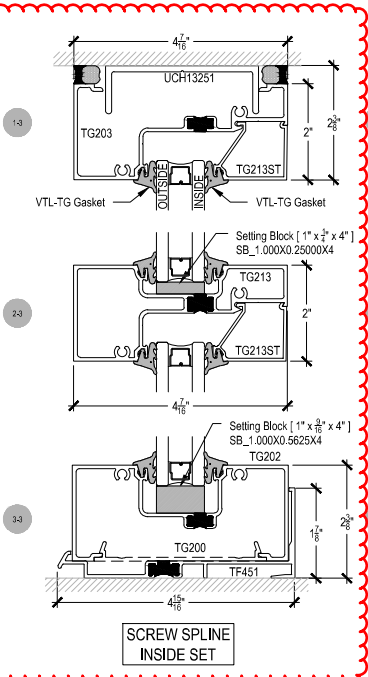


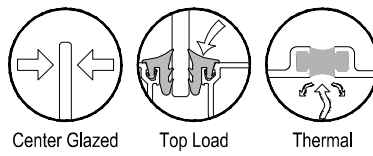
COMPENSATING STICK OUTSIDE SET

COMPENSATING STICK INSIDE SET

SCREW SPLINE INSIDE SET

SCREW SPLINE OUTSIDE SET





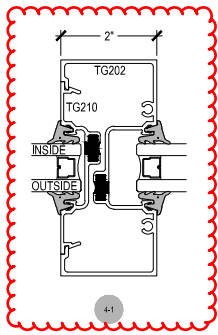
AG451T Series

Description: 2" x 4 1/2" Center Glazed for 1" Glass

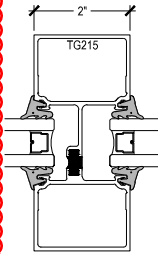
Function: Storefront

Detail: Verticals

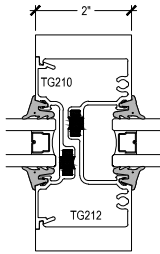
Scale: 3" = 1'-0"



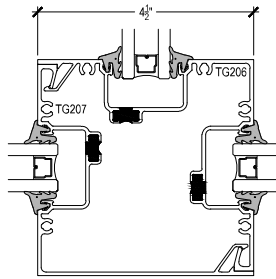
4-1



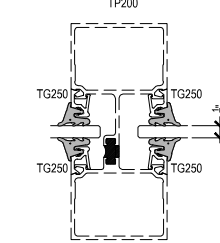
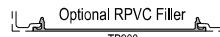
4-2
OPTIONAL VERTICAL



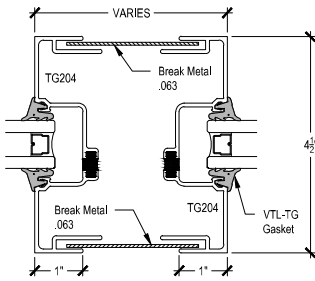
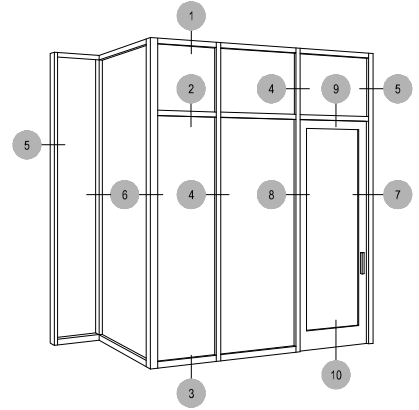
4-3
OPTIONAL VERTICAL



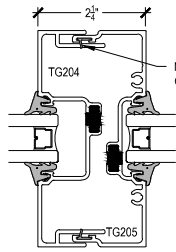
4-4
OPTIONAL VERTICAL



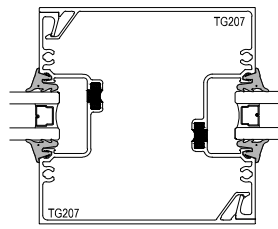
REDUCER FOR 1/4" GLAZING (TG250)



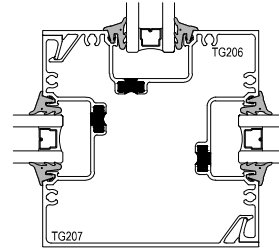
4-5
OPTIONAL VERTICAL



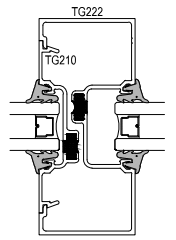
4-6
OPTIONAL VERTICAL



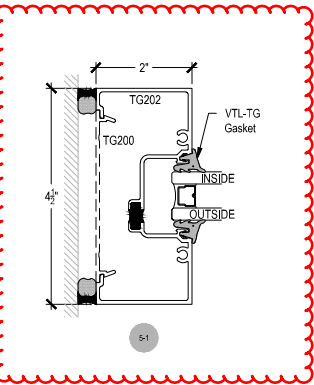
4-7
OPTIONAL VERTICAL



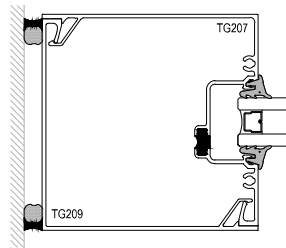
4-8
OPTIONAL VERTICAL



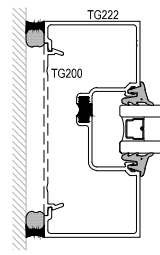
4-9
OPTIONAL VERTICAL



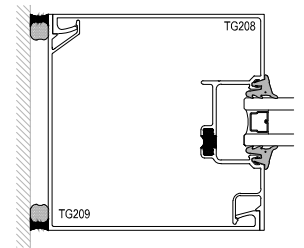
5-1



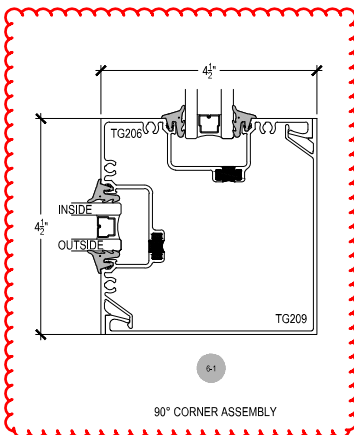
5-2
OPTIONAL JAMB



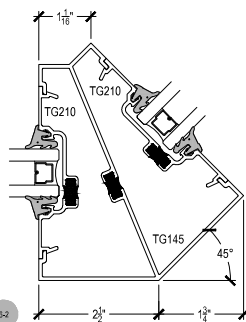
5-3
OPTIONAL JAMB



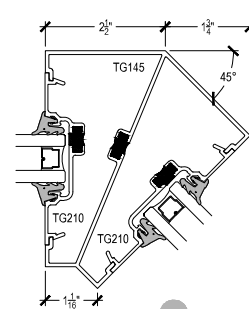
5-4
OPTIONAL JAMB



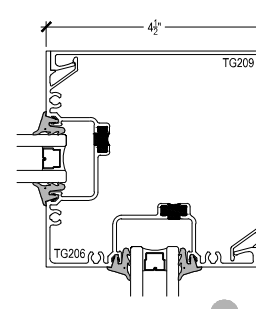
6-1
90° CORNER ASSEMBLY



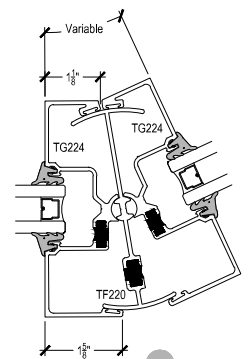
6-2
135° CORNER ASSEMBLY



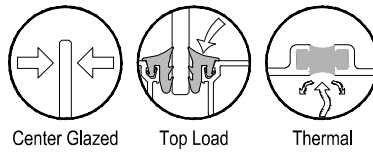
6-3
135° CORNER ASSEMBLY



6-4
90° CORNER ASSEMBLY

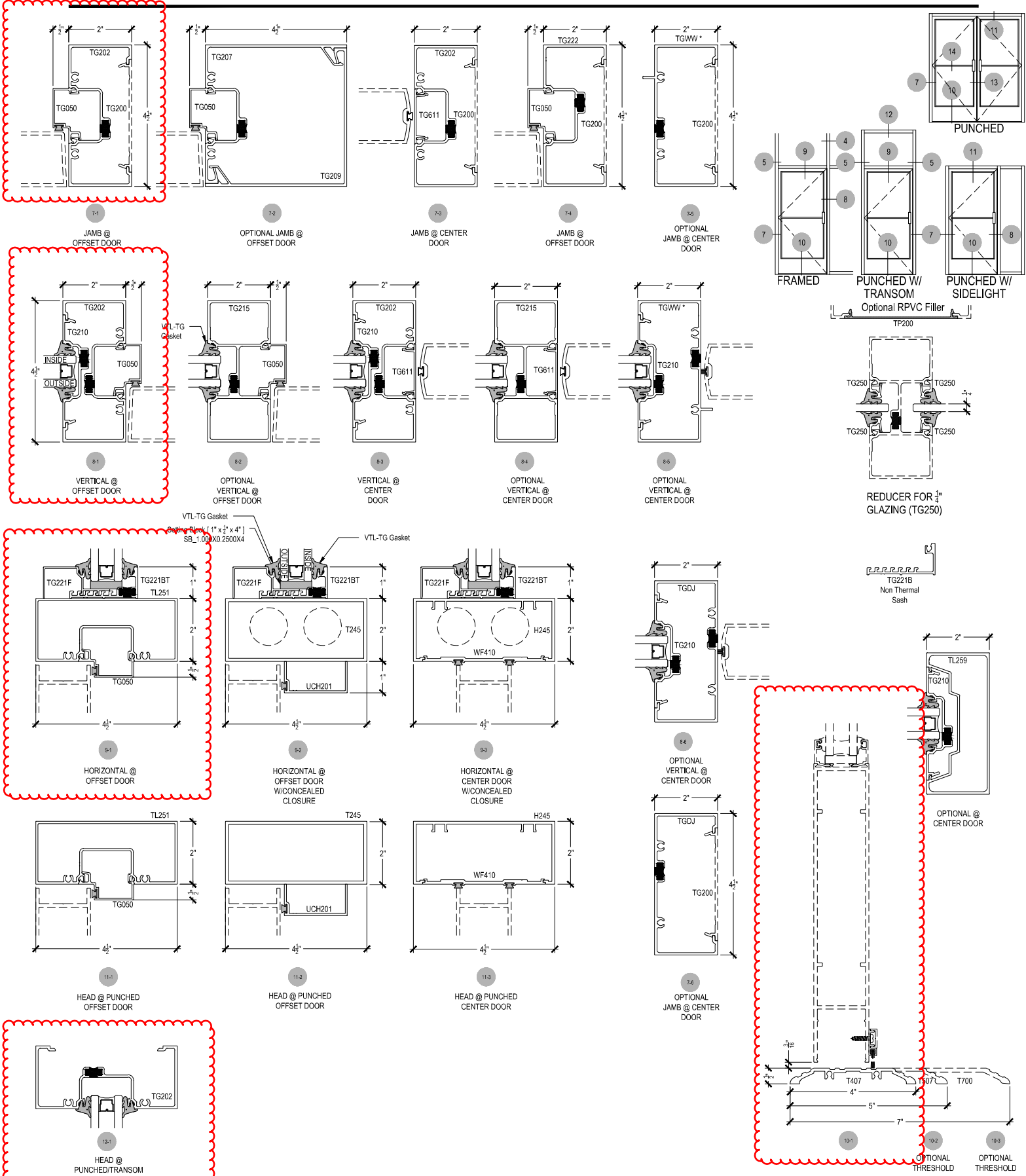


6-5
FLEXIBLE CORNER ASSEMBLY



AG451T Series

Description: 2" x 4 1/2" Center Glazed for 1" Glass
 Function: Storefront
 Detail: Doors
 Scale: 3" = 1'-0"



LIGHT 1: RECESSED PATHWAY LIGHTING

LOCATION: ALLEY FACADE WALL BELOW UNIT WINDOWS

LED recessed wall luminaires - unshielded

BEGA

Application

LED recessed wall luminaire with unshielded light distribution for the illumination of ground surfaces, building entrances, stairs and footpaths.

Materials

Luminaire housing and faceplate constructed of die-cast aluminum marine grade, copper free ($\leq 0.3\%$ copper content) A360.0 aluminum alloy
 White safety glass
 Silicone applied robotically to plasma treated casting for increased adhesion
 High temperature silicone gasket
 Mechanically captive stainless steel fasteners
 Stainless steel screw clamps
 Composite installation housing

NRTL listed to North American Standards, suitable for wet locations
 Protection class IP65
 Weight: 2.1 lbs

Electrical

Operating voltage	120-277VAC
Minimum start temperature	-40°C
LED module wattage	7.8W
System wattage	11.0W
Controllability	0-10V, TRIAC, and ELV dimmable
Color rendering index	Ra > 80
Luminaire lumens	701 lumens (3000K)
Lifetime at Ta=15°C	95,000 h (L70)
Lifetime at Ta=30°C	75,000 h (L70)

LED color temperature

Please specify

- 2700K - Product number + **K27**
- 3000K - Product number + **K3**
- 3500K - Product number + **K35**
- 4000K - Product number + **K4**

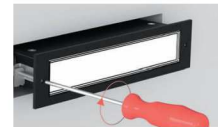
BEGA can supply you with suitable LED replacement modules for up to 20 years after the purchase of LED luminaires - see website for details

Finish

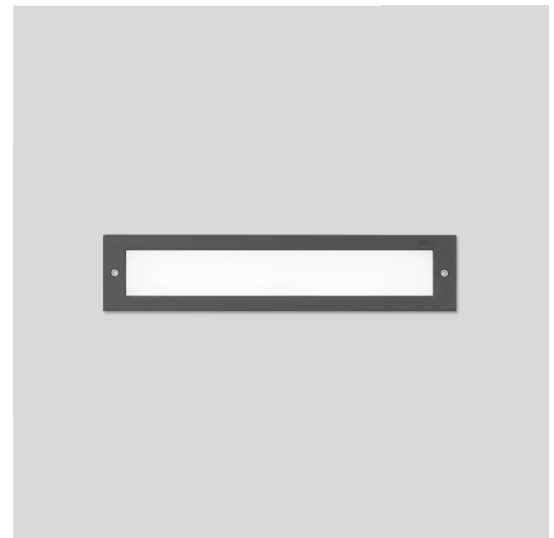
All BEGA standard finishes are matte, textured polyester powder coat with minimum 3 mil thickness.

Available colors Black (BLK) White (WHT) RAL:
 Bronze (BRZ) Silver (SLV) CUS:

Please specify



Fully enclosed luminaire with installation housing ensures seamless integration and weathertight operation.



LED recessed wall luminaires - unshielded				
	LED	A	B	C
33 168	7.8W	12 1/2	2 3/4	5

BEGA 1000 BEGA Way, Carpinteria, CA 93013 (805) 684-0533 info@bega-us.com

Due to the dynamic nature of lighting products and the associated technologies, luminaire data on this sheet is subject to change at the discretion of BEGA North America. For the most current technical data, please refer to bega-us.com © copyright BEGA 2018 Updated 01/21/19

LIGHT 2: UP/DOWN SCONCE (OPTION 1)
LOCATION: MOUNTED ON VERTICAL STEEL PILASTERS AT STREET LEVEL

dweLED

Caliber

Outdoor Wall Sconce 3000K

Model & Size	Color Temp & CRI	Watt	LED Lumens	Delivered Lumens
WS-W36610 10"	3000K 90	11W	735	560

Fixture Type: _____
 Catalog Number: _____
 Project: _____
 Location: _____

Finish
AL Brushed Aluminum
BK Black
BZ Bronze
WT White

Example: **WS-W36610-AL**

DESCRIPTION

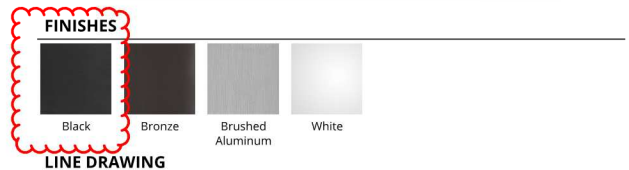
Light projection tuned with precision, Caliber is a discrete cylinder with minimal mounting hardware. Available in a single or double light configuration which can be mounted both vertically and horizontally. The light engine is factory sealed for maximum protection against the harshest elements.

FEATURES

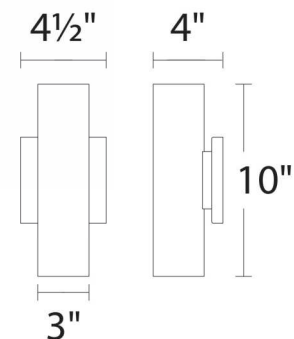
- Discrete cylinder with minimal mounting hardware
- Weather-resistant powder coated finish
- WS-W36614 is Up & down light, WS-W36610 is one direction
- Light engine is factory sealed for maximum protection from the elements
- Driver concealed within the fixture
- 5 year warranty

SPECIFICATIONS

Color Temp: 3000K
Input: 120-277 VAC, 50/60Hz
CRI: 90
Dimming: ELV: 100 - 10%
Rated Life: 72000 Hours
Mounting: Can be mounted on wall in all orientations, Can be mounted on wall vertically or horizontally
Standards: ETL, cETL, IP65
 Wet Location Listed
Construction: Aluminum hardware with lens diffuser



LINE DRAWING



WS-W36610

LIGHT 2: UP/DOWN SCONCE (OPTION 2)
LOCATION: MOUNTED ON VERTICAL STEEL PILASTERS AT STREET LEVEL

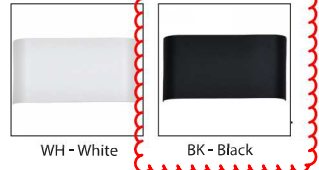
EW27112
 Specification Sheet
External Wall Sconce

Please specify standard finish



GH - Graphite

Other Finishes:



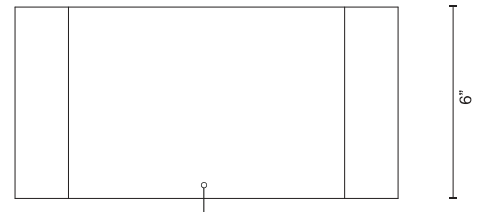
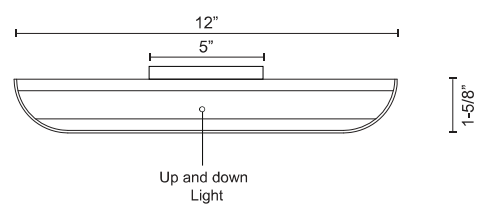
Product Descriptions

Product Details

- High system efficacy
- Low total life cycle cost
- ETL Listed
- 5-year LED and fixture warranty
- Complete warranty terms located at:
www.kuzcolighting.com/warranty
- DC Driver In canopy
- Can be mounted vertically or horizontally
- Up and down light
- Available in black, graphite, and white metal finish
- Dimmable (not included)
- Custom options available

PROJECT					
DATE				TYPE	
Voltage	Watt	LED Lumens	Delivered Lumens	Finish(es)	Color Temp 3000K
120V	12W	1200lm	TBD	BK - Black	CRI (Ra) >90
120V	12W	1200lm	TBD	WH - White	Dimming 100% - 10%
120V	12W	1200lm	TBD	GH - Graphite	Rated Life 50,000 hours

*Preliminary figures



Up and down Light

Metal Finish
 BK - Black
 GH - Graphite
 WH - White

Fixture Weight:

Canopy Dimensions:
 L: 5" H: 5" E: 1/2"

Comments:

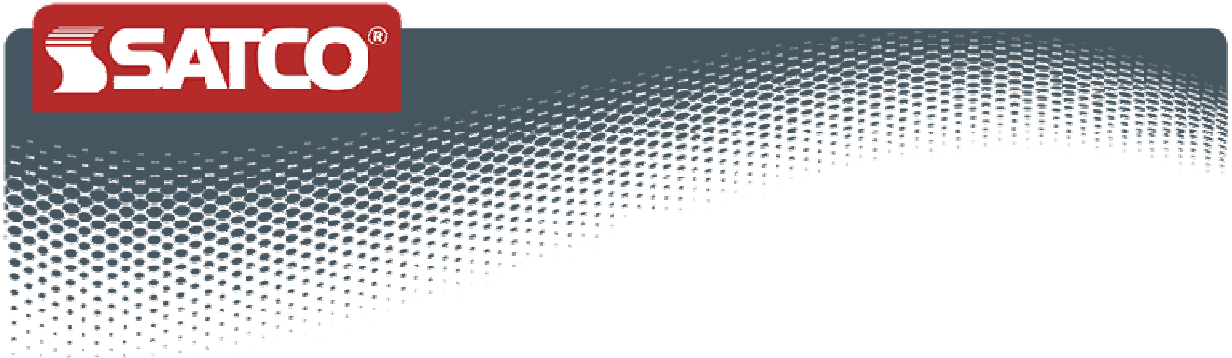
KUZCO
 LIGHTING
 20170710

19054 28th Avenue
 Surrey, BC, Canada
 V3Z 6M3

T: 604 538 7162
 F: 604 538 7196
 W: Kuzcolighting.com



LIGHT 3: SEMI-RECESSED DOWNLIGHT
TO BE USED AT THE FOLLOWING EXTERIOR LOCATIONS:
-RECESSED COMMERCIAL ENTRY ON 5TH
-SOFFIT AT ALLEY



S29323

10.5W/LED/5.5"FLUSH/30K/RD/WH
 10.5 watt; 5.5" Flush Mount LED Fixture; 3000K; Round Shape;
 White Finish; 120 volts



S29323

- Features
- Surface mount fixture
 - Solid State LED lighting
 - Long life
 - 5 Year limited warranty
 - Dimmable
 - Wet location

Item Number	Product Line	UPC	Voltage	Watts	Incandescent Equivalent	Fixture Type	Base
S29323	BLINK	045923293238	120	10.5	50W	Flush Mount	Connector

Lamp Code	Dimmable/Non-Dimmable	Suggested Dimmers	Finish	MOL In Inches	MOD In Inches	Initial Lumens	Average Rated Hours
10.5W/LED/5.5"FLUSH/30K/RD/WH	Dimmable	Compatible dimmers for S29323	White	1"	5-5/8"	600	50000

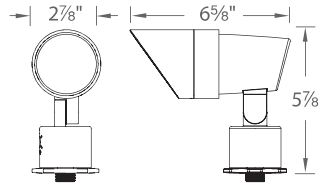
Kelvin Temp	Color	CRI	Beam Spread Deg	Operating Temperature	Pack	Package Type	ENERGY STAR
3000	Warm White	90	108	-17C (-1.4F) to a maximum of +45C (+113F)	12	Box	ENERGY STAR

CEC Status	Material	RoHS Compliant	UL or ETL Listed	UL Classification	Warranty
California T24 Listed	Housing: Die cast aluminum	Yes	Yes	cETLus - Wet Location Rated	5 Year Limited

PROVIDE 3500 K LEVELS TO MATCH ADJACENT FIXTURES

LIGHT 4: LANDSCAPE UPLIGHTING

LOCATION: PLANTERS AND EXTERIOR LIGHTWELLS (NOT VISIBLE FROM THE PUBLIC RIGHT OF WAY)



Fixture Type:

Catalog Number:

Project: _____

Location: _____

PRODUCT DESCRIPTION

Landscape accent luminaire. One fixture replaces all older halogen landscape accent lights

FEATURES

- Adjustable and lockable beam angle
- Integral dimmer
- IP66 rated, Protected against high-pressure water jets
- Includes a detachable shroud
- Solid diecast brass or corrosion resistant aluminum
- Factory sealed water tight fixtures
- Mounting stake, 6' lead wire and direct burial gel filled wire nuts included
- Maintains constant lumen output against voltage drop
- UL 1838 Listed
- Not suitable to use with external dimmers

SPECIFICATIONS

Input: 9 - 15VAC (Transformer is required)
Power: 2W to 16W / 2VA - 23VA
Brightness: 190 lm to 1045 lm
Beam Angle: 10° to 60°
CRI: 85
Rated Life: 70,000 hours

ORDERING NUMBER

		Color Temp	Finish
5011	<i>Accent 12V</i>	27 2700K	BZ <i>Bronze on Aluminum</i>
		30 3000K	BBR <i>Bronze on Brass</i>

5011-_____

Example: **5011-30BBR**

wacighting.com
 Phone (800) 526.2588
 Fax (800) 526.2585

Headquarters/Eastern Distribution Center
 44 Harbor Park Drive
 Port Washington, NY 11050

Central Distribution Center
 1600 Distribution Ct
 Lithia Springs, GA 30122

Western Distribution Center
 1750 Archibald Avenue
 Ontario, CA 91760

LIGHT 4: LANDSCAPE UPLIGHTING

LOCATION: PLANTERS AND EXTERIOR LIGHTWELLS (NOT VISIBLE FROM THE PUBLIC RIGHT OF WAY)

Additional Mounting Stake



9000-ST9-BK
Durable PVC stake

Tree Mount Junction Box



*Bronze on Aluminum box with Stainless steel mounting screws
Two 1/2" NPT threaded holes*

5000-TCP-BZ

Surface Mount Flange/Stake



Includes three 7 inch threaded stainless steel stabilizing pins for ground mounting or surface mounts with four screws or over a junction box

5000-SCP-BZ
Bronze on Aluminum

5000-SCP-BBR
Bronze on Brass

Optics



Enhances saturation of florals and foliage and turtle friendly

LENS-20-AMB
Amber

LENS-20-RED
Red

LENS-20-FR
Frosted

LENS-20-GRN
Green

LENS-20-BLU
Blue

Extension Rods



Extends distance between Accent light and Surface Mount Canopy, Stake, or Tree Mount box

5000-X04-BZ
4 inches

5000-X08-BZ
8 inches

5000-X12-BZ
12 inches

5000-X18-BZ
18 inches

5000-X24-BZ
24 inches

Rod L-Coupler



5000-LCO-BZ
Bronze on Brass

OPTIC ADDITIONS PENDING FINAL TREE SELECTION AND QUALITY

Magnetic Transformers

*Stainless Steel, 12-15V output, IP65 rated, UL 1838 listed
See transformer spec sheet for details and its accessories*

9075-TRN-SS
75W Max

9150-TRN-SS
150W Max

9300-TRN-SS
300W Max

9600-TRN-SS
600W Max



wacighting.com
Phone (800) 526.2588
Fax (800) 526.2585

Headquarters/Eastern Distribution Center
44 Harbor Park Drive
Port Washington, NY 11050

Central Distribution Center
1600 Distribution Ct
Lithia Springs, GA 30122

Western Distribution Center
1750 Archibald Avenue
Ontario, CA 91760

LIGHT 5: LINEAR LED

LOCATION: RECESSED INTO WOODEN SOFFIT SLATS AT EXTERIOR ENTRY COURT, BEHIND GATE. FIXTURE WILL NOT BE VISIBLE FROM RIGHT OF WAY

Application

LED linear ceiling and wall luminaire with unshielded light distribution. Arranged individually, in continuous bands of light or grouped together, these luminaires can accentuate building architecture while providing glare free illumination.

Materials

Luminaire housing and faceplate constructed of die-cast marine grade, copper free ($\leq 0.3\%$ copper content) A360.0 aluminum alloy
 White safety glass
 Silicone applied robotically to casting, plasma treated for increased adhesion
 High temperature silicone gasket
 Mechanically captive stainless steel fasteners

NRTL listed to North American Standards, suitable for wet locations
 Protection class IP 65
 Weight: 20.1 lbs

Electrical

Operating voltage	120-277V AC
Minimum start temperature	-40° C
LED module wattage	48.0 W
System wattage	55.0 W
Controllability	0-10V dimming
Color rendering index	Ra > 80
Luminaire lumens	3,359 lumens (3000K)
LED service life (L70)	60,000 hours

LED color temperature

- 4000K - Product number + **K4**
- ~~3500K - Product number + **K35**~~
- 3000K - Product number + **K3**
- ~~2700K - Product number + **K27**~~

BEGA can supply you with suitable LED replacement modules for up to 20 years after the purchase of LED luminaires - see website for details

Finish

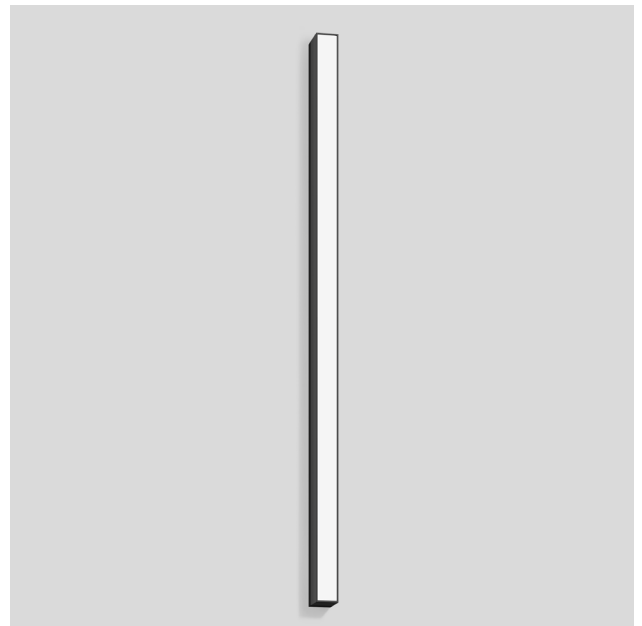
All BEGA standard finishes are matte, textured polyester powder coat with minimum 3 mil thickness.

Available colors	Black (BLK)	White (WHT)	RAL:
	Bronze (BRZ)	Silver (SLV)	CUS:



LED linear ceiling and wall luminaire · unshielded

	LED	A	B	C
24 320	ADA 48.0W	59 ¼"	2 ¾"	3 ¾"



BEGA 1000 BEGA Way, Carpinteria, CA 93013 (805) 684-0533 info@bega-us.com

Due to the dynamic nature of lighting products and the associated technologies, luminaire data on this sheet is subject to change at the discretion of BEGA North America. For the most current technical data, please refer to bega-us.com
 © copyright BEGA 2018 Updated 07/16/19

THE ORIGINAL
NO SCRATCH®
BIKE PARKING RACKS



FLAT BAR
(2" x .25")



SANTOPRENE®
NO SCRATCH®
BUMPER

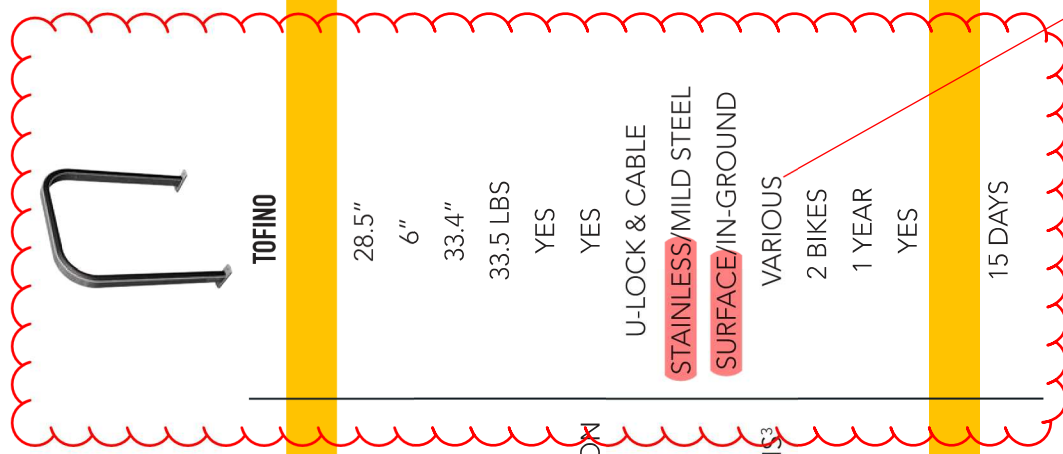
RECTANGULAR TUBE
(1" x 2" x .120")

BIKE FRIENDLY: INTEGRATED PROPRIETARY NO SCRATCH® BUMPER MADE FROM DURABLE SANTOPRENE® PROTECTS BIKES FROM SCRATCHES WHILE PARKED.

MODERN: CLEAN FLUID LINES COMPLEMENT ANY SPACE OR PROJECT. COMBINE STYLES TO CREATE SIGNATURE INSTALLATIONS.

VERSATILE: CHOOSE FROM 3 UNIQUE SHAPES. ABILITY TO LOCK THE BIKE FRAME AND WHEEL. PARK UP TO 2 BIKES PER RACK.

DURABLE: AVAILABLE IN STAINLESS OR MILD STEEL. RECTANGULAR TUBING IS PIPE CUTTER RESISTANT. SURFACE OR IN-GROUND MOUNTING OPTIONS WITH ANTI-THEFT HARDWARE.



NO SCRATCH® BIKE RACKS	TOFINO	OAHU	WESTPORT	MOUNTING RAILS
RACK SPECIFICATIONS				
LENGTH ¹	28.5"	36"	15"	66.1" - 121.1"
WIDTH	6"	6"	6"	VARIABLE W/RACK MODEL
HEIGHT	33.4"	32.4"	28.6"	RACK HEIGHT + 1.25"
WEIGHT	33.5 LBS	28.5 LBS	33.8 LBS	24.7 - 44.7 LBS
NO SCRATCH® BUMPER ²	YES	YES	YES	INCLUDED WITH RACKS
CUSTOM SIGN PLATE OPTION	YES	YES	YES	AVAILABLE WITH RACKS
LOCK COMPATIBLE	U-LOCK & CABLE	U-LOCK & CABLE	U-LOCK & CABLE	U-LOCK & CABLE
MATERIAL OPTIONS	U-LOCK & CABLE STAINLESS/MILD STEEL	U-LOCK & CABLE STAINLESS/MILD STEEL	U-LOCK & CABLE STAINLESS/MILD STEEL	CUSTOM EXTRUDED ALUMINUM
MOUNTING OPTIONS	SURFACE/IN-GROUND	SURFACE/IN-GROUND	SURFACE/IN-GROUND	SURFACE - ANGLED OR STANDARD
FINISH & COATING OPTIONS ³	VARIOUS	VARIOUS	VARIOUS	CLEAR ANODIZE
CAPACITY	2 BIKES	2 BIKES	2 BIKES	6 - 10 BIKES
WARRANTY	1 YEAR	1 YEAR	1 YEAR	1 YEAR
DECLARE CERTIFIED	YES	YES	YES	NO
ORDERING INFO				
LEAD TIME ⁴	15 DAYS	15 DAYS	15 DAYS	15 DAYS

The Tofino, Westport & Oahu No Scratch® bike racks add elegance and style to any bike rack installation and unparallelled bike protection for end users. Mount the racks individually or in groups on our Mounting Rails. Mounting Rails are currently for use with Tofino and Westport No Scratch® Racks as well as any Sportworks Standard rack with 2 mounting feet (Oahu and Circular bike racks excluded).

BEAD-BLAST
SATIN FINISH
STAINLESS STEEL

NOTES:
 1 Width includes mounting foot.
 2 No Scratch® bumper made from durable Santoprene® protects bikes while parked.
 3 Finish and Coating Options include: bead blast, powder coat, hot-dip galvanized, plascoat PPA-571. Powder coating is available in a variety of colors and subject to minimum lot charges.
 4 Lead times may vary for custom colors and sign plates.

