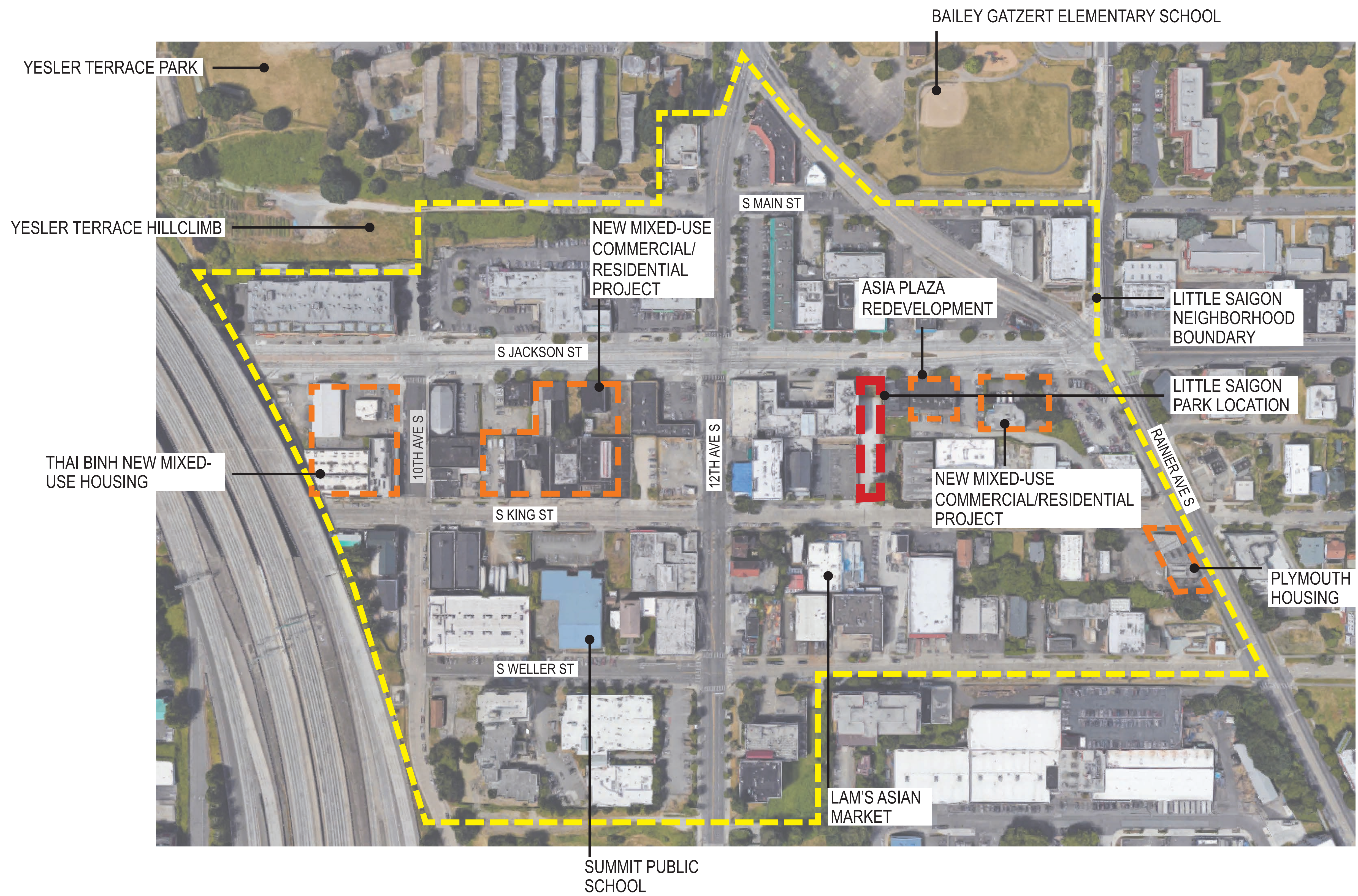


LITTLE SAIGON LANDBANKED SITE PARK PROJECT

International Special Review District Presentation





NEIGHBORHOOD CONTEXT

LITTLE SAIGON LANDBANKED SITE PARK PROJECT





SITE CONTEXT AND CONDITIONS

LITTLE SAIGON LANDBANKED SITE PARK PROJECT





LOOKING SOUTH FROM S. JACKSON



LOOKING NORTH AT S. JACKSON EDGE GRADE CHANGE



LOOKING NORTH ACROSS SOUTH KING STREET

VICTORIAN ROW HOUSING

EXISTING SITE PHOTOS

LITTLE SAIGON LANDBANKED SITE PARK PROJECT

Project Start-up May 2018 - June 2018	Schematic Design & Public Engagement July 2018 - Sept 2019	Design Development Oct 2019 - Nov 2020 (Covid Delay)	Construction Documents & Permitting Dec 2020 - Aug 2021	Construction Sept 2021 - Aug 2022
	<ul style="list-style-type: none">• 3 Public Meetings<ul style="list-style-type: none">August 26, 2018 (Festi-Roll)November 1, 2018 (Pho Bac)July 14, 2019 (Pho Bac)• CPTED walk Jan 25, 2019• Public Survey Feb 2019• Meetings with Little Saigon Park Advisory Committee• CPTED walk August 13, 2019	<ul style="list-style-type: none">• Artist Selection and Notification (Nov-Dec 2019)• Artist begins work (Jan 2020)	<ul style="list-style-type: none">• Art design completion (Feb 2021)	<ul style="list-style-type: none">• Art construction/ fabrication (June 2022)• Art completion/ installation (August 2022)

SPR SCHEDULE (Art Schedule in blue)

LITTLE SAIGON LANDBANKED SITE PARK PROJECT



PUBLIC ENGAGEMENT:



1. August 26, 2018- Public Meeting #1 at Little Saigon Festi-Roll (200+ attendees)
2. September 11, 2018- Little Saigon Park Advisory Committee Meeting (LSPAC)
3. September 21, 2018- Parking Day outreach
4. October 2, 2018- LSPAC Meeting
5. November 1, 2018- Public Meeting #2 (40+ attendees)
6. November 13, 2018- LSPAC Meeting
7. February 19, 2019- LSPAC Meeting to discuss public survey feedback
8. March 20, 2019 - LSPAC Design Charette
9. April 17, 2019- LSPAC Meeting
10. May 21, 2019- LSPAC Meeting
11. July 14, 2019 - Public Meeting #3
12. February 3, 2020 - LSPAC Meeting, Play area review

SUMMARY COMMENTS:

- Not a strong preference about which concept was most preferred; slight preference for Concepts #1 and #2 over #3
- Concern about safety and security, homeless use. Create open sight lines and have lighting.
- Desire for more open flexible-use space
- Stronger understanding/portrayal of Vietnamese references in the designs
- Continued support for the play area



LITTLE SAIGON LANDBANKED SITE PARK PROJECT

RACIAL EQUITY TOOLKIT SUMMARY

- Set Outcomes.
 - Increase opportunities for historically underrepresented communities to participate in the public engagement process
- Involve Stakeholders. Analyze data.
 - The Little Saigon Park Advisory Committee was created to involve stakeholders from for profit and non-profit sectors as well as residents from the Little Saigon community
- Determine Benefit and/or Burden.
 - Benefit: Increased access to open space
 - Burden/Unintended consequence: Reduced parking for Lam's Seafood
- Advance Opportunity or Minimize Harm.
 - A robust public engagement process will foster a community designed park space, increase ownership and support stewardship
 - Always include translation
 - Lam's Seafood is culturally significant to the community. Working alongside Lam's to assist with messaging for customers can help minimize harm to the business
- Evaluate. Raise Racial Awareness. Be Accountable.
 - Track attendance of public meetings and provide flyers that have images which reflect the community served
 - Continue to check-in with stakeholders on status of the park design and engagement opportunities
- Report Back.
 - Share analysis with internal team as well as external stakeholders

RACIAL EQUITY TOOLKIT

LITTLE SAIGON LANDBANKED SITE PARK PROJECT



PURPOSE:

- This is one of 14 landbanked sites which were purchased by Seattle Parks to provide additional access to open space in a high density urban neighborhood.
- The park will provide accessible space for neighborhood events and community interaction.
- The design of the park is to reflect the cultural character of the neighborhood.
- The park will be designed to CPTED principles.
- The park will be designed to reduce maintenance.
- There is a 15% max limit on impervious surfaces with the exception of circulation paths and surfaces under tree canopy.



PURPOSE AND PROGRAMMING

PROGRAM:

- The park is designed to provide different sizes of spaces for accessible community gatherings and events.
- A public art installation will reflect the culture of the neighborhood.
- The park will be designed with open sight lines and night lighting.
- There will be multiple locations designed for performances. An events electrical panel will be installed.
- The parking space in front of the park on S. King Street will be reserved for temporary food trucks and Parks maintenance vehicles.
- The community requested a play area.



LITTLE SAIGON LANDBANKED SITE PARK PROJECT

What We Heard

The final design is based upon comments received from the community, input from the ISRD, and discussions on our safety walk with Seattle Police.

Public Comments:

- Parks design should be flexible and allow for a wide variety of activities, including:
 - Children’s Play area
 - Ability to adapt to the changing community
 - Performance spaces of differing sizes
 - Reflect the culture of the neighborhood

ISRD Comments:

- Consider an integrated amphitheater space working with the slopes.
- Request more specific input from the community on:
 - a. The types of programming that are desired within the park.
 - b. The types of performances that are desired for the stage area. How can the stage area be tailored to the specific types of performances desired?
 - c. The types of play that are desired within the play area.
 - d. Where does the main programming want to be located, on the Jackson or King side?
 - e. On iconography that speaks to the community.
- Incorporate a CPTED narrative into the next presentation. Consider coordinating with the local police officer.

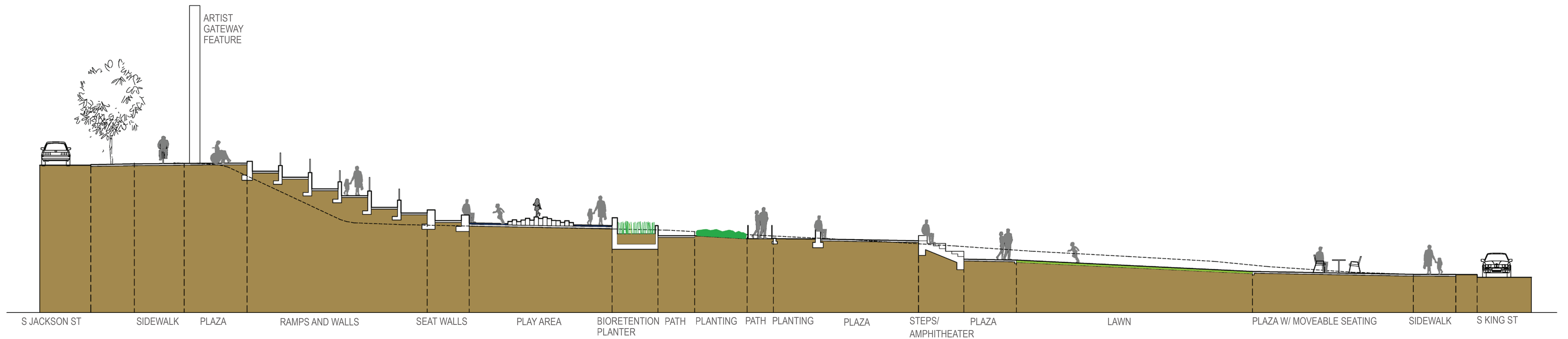
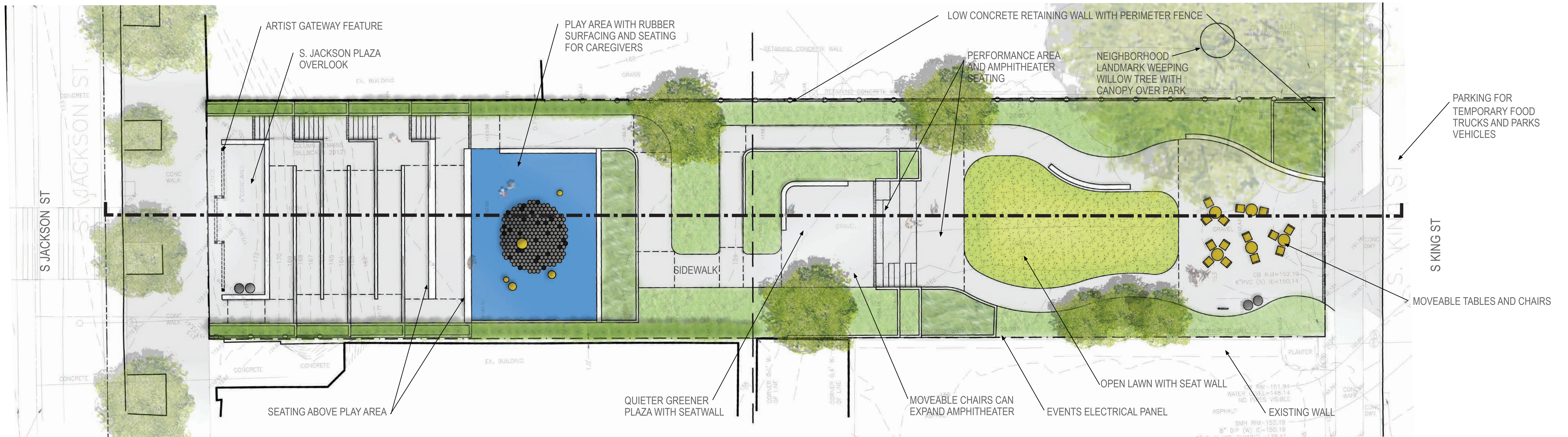
Safety Walk Comments from Police: August 13, 2019

- Park should have visible site lines through the park
- Provide good lighting

How We Responded

Our Response:

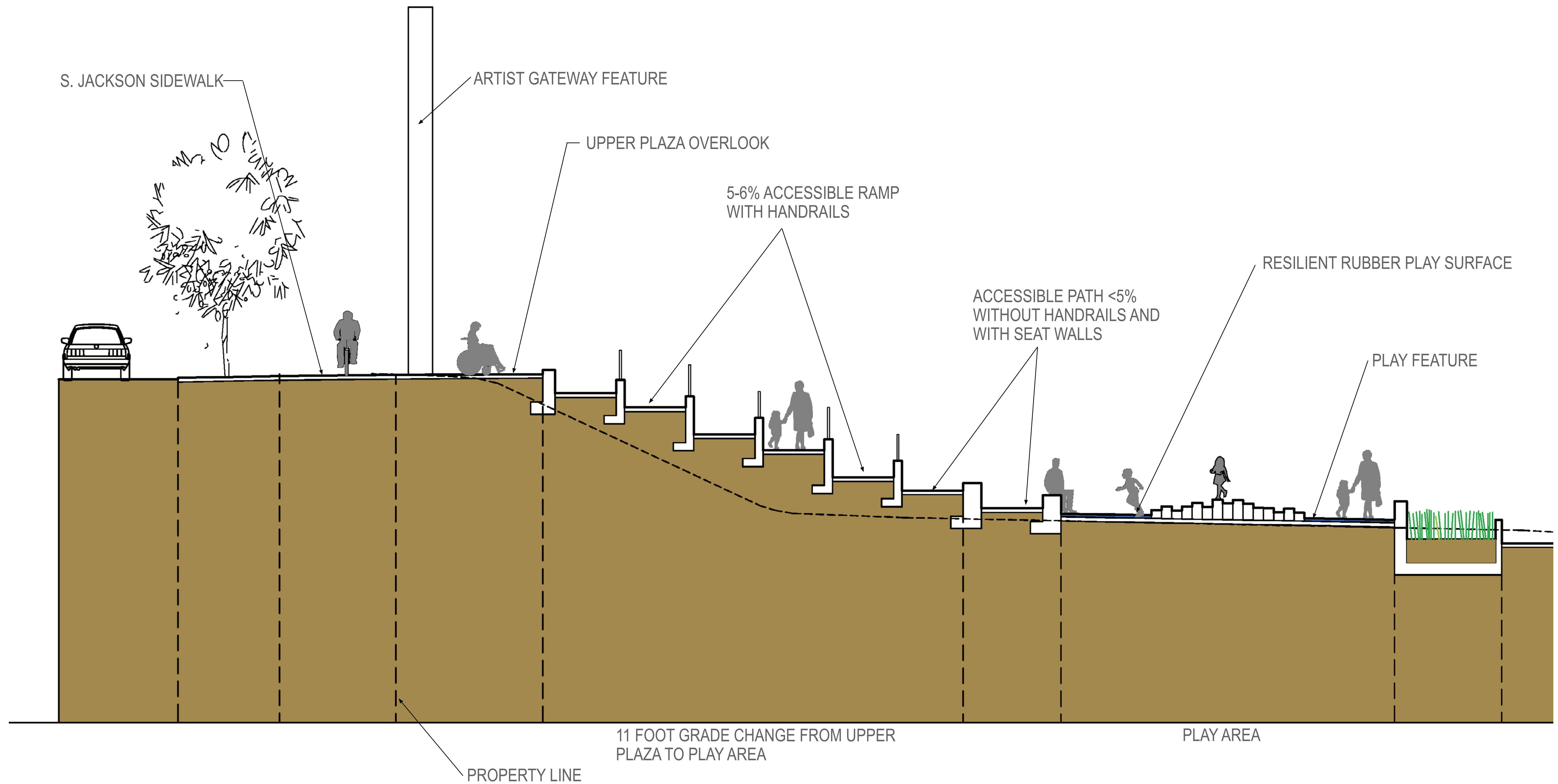
- The final design has multiple and flexible activity and performance spaces
- There is a childrens play area
- The plant materials and colors of fixed elements reflect the culture of the neighborhood
- An artist will be selected to reinforce the cultural identify
- The current design has clear site lines from end to end and will have good lighting to make the park feel safer
- The park enables patrol cars to have clear views through the park from both Jackson and King Street.
- Tree canopies will be kept high and shrub plantings low to keep site lines open



CURRENT CONCEPT PLAN AND SECTION

LITTLE SAIGON LANDBANKED SITE PARK PROJECT





ENLARGED SECTION OF RAMPS

LITTLE SAIGON LANDBANKED SITE PARK PROJECT





Artwork
Concept:
Kalina Chung



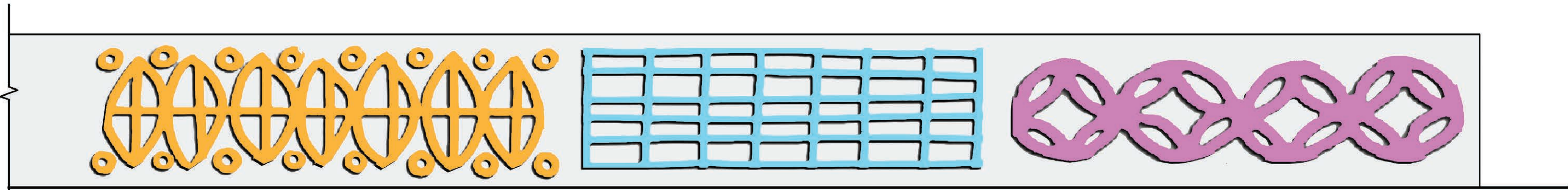
ARTWORK CONCEPT: KALINA CHUNG

LITTLE SAIGON LANDBANKED SITE PARK PROJECT

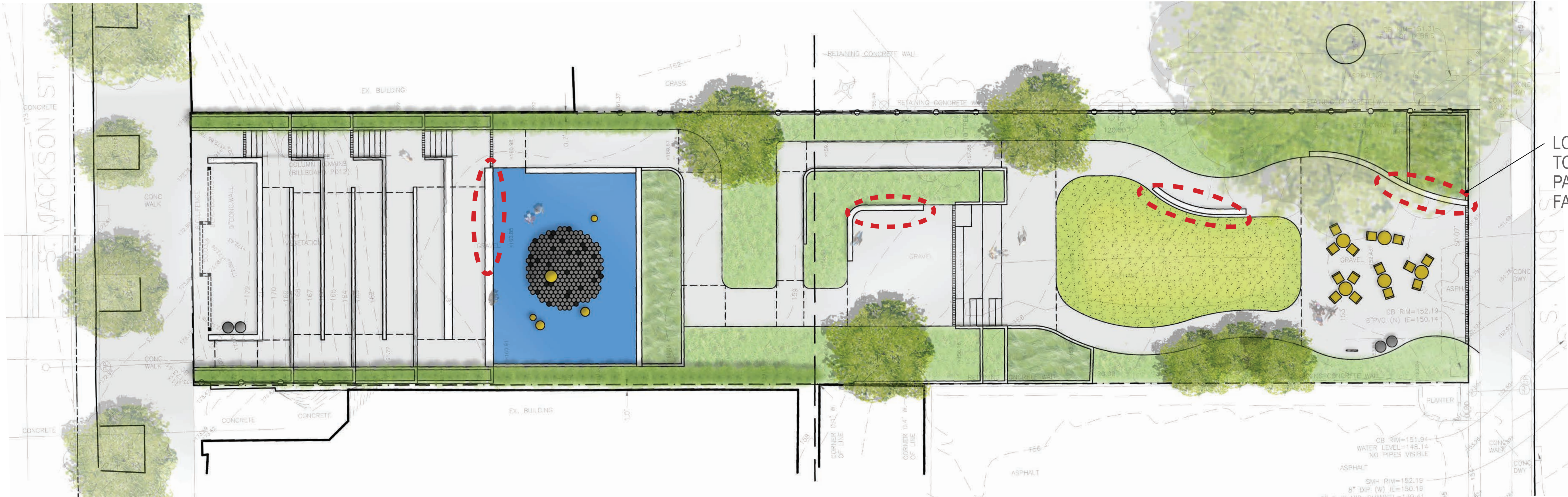


ARTWORK CONCEPT: KALINA CHUNG

LITTLE SAIGON LANDBANKED SITE PARK PROJECT



CONCRETE BENCHES WITH SANDBLASTED PATTERNS FROM GATEWAY FEATURE



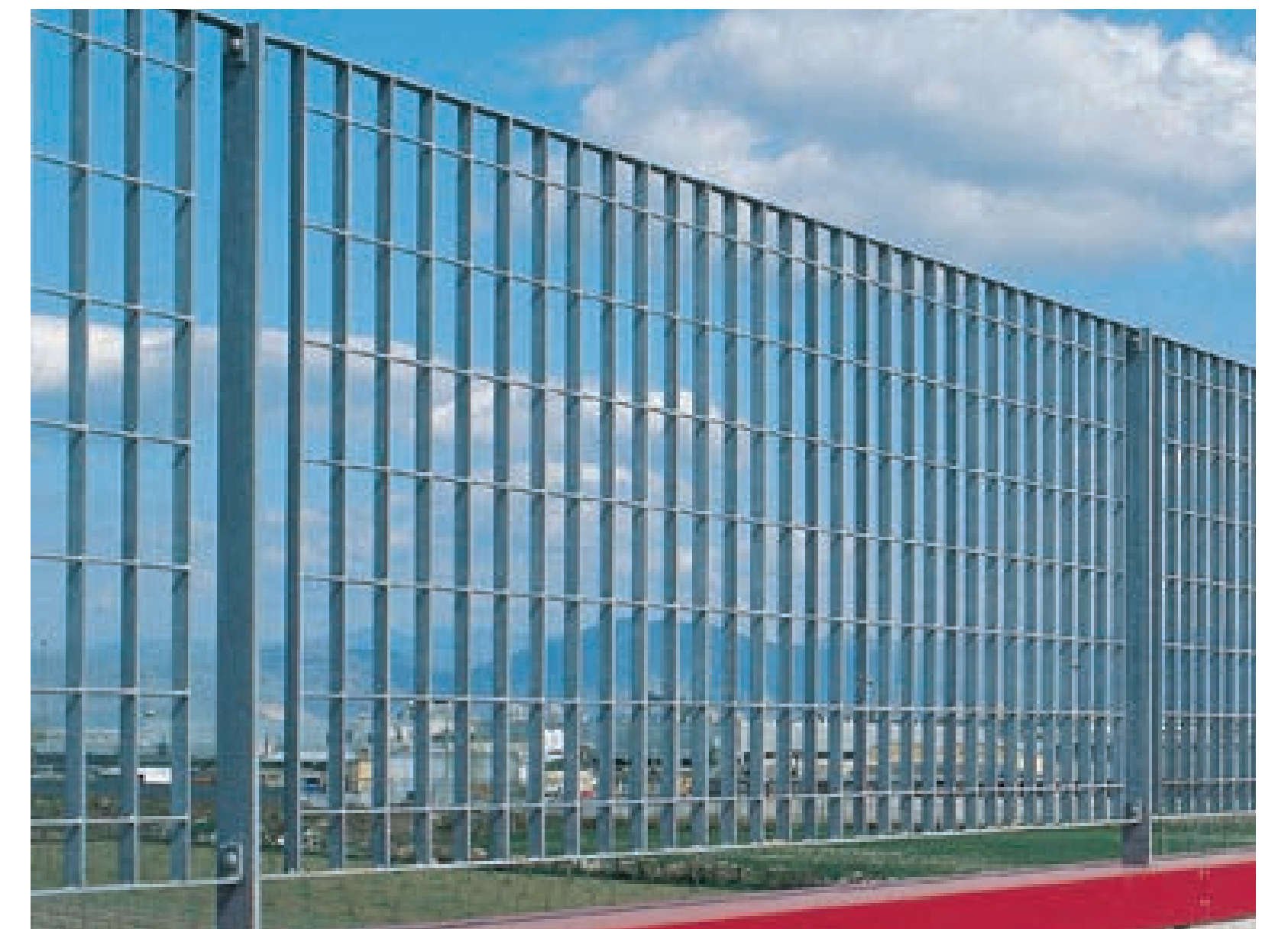
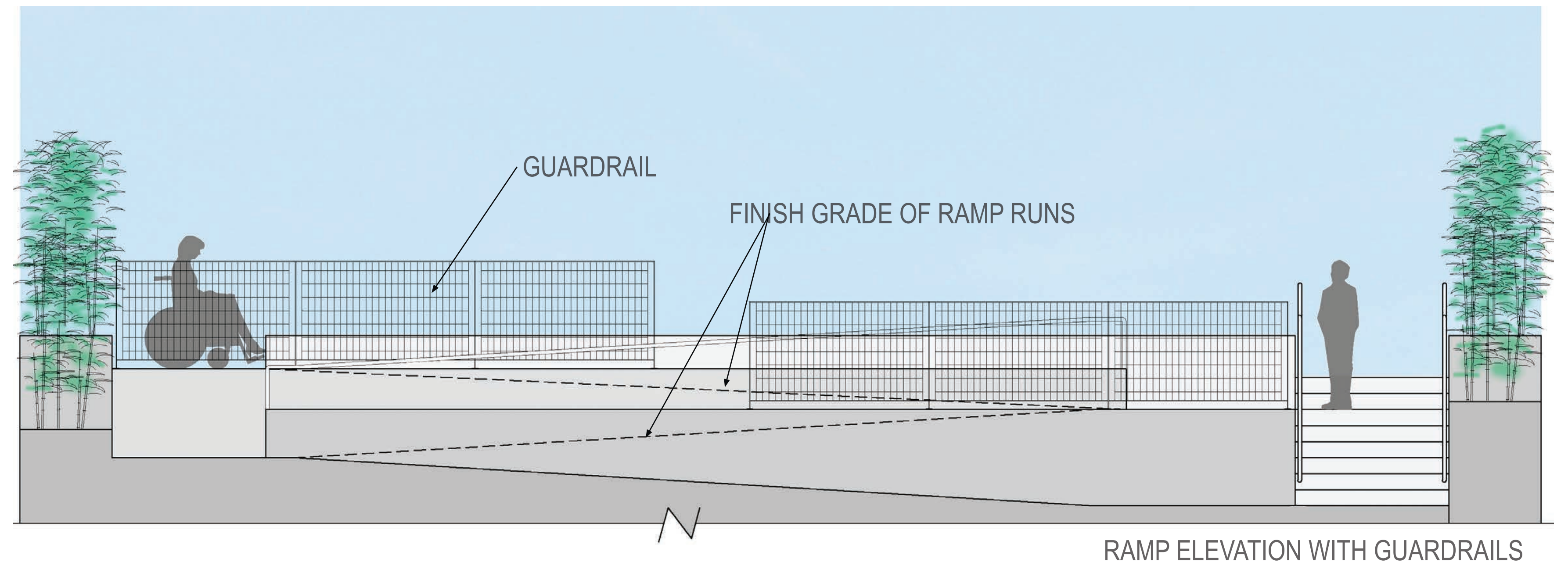
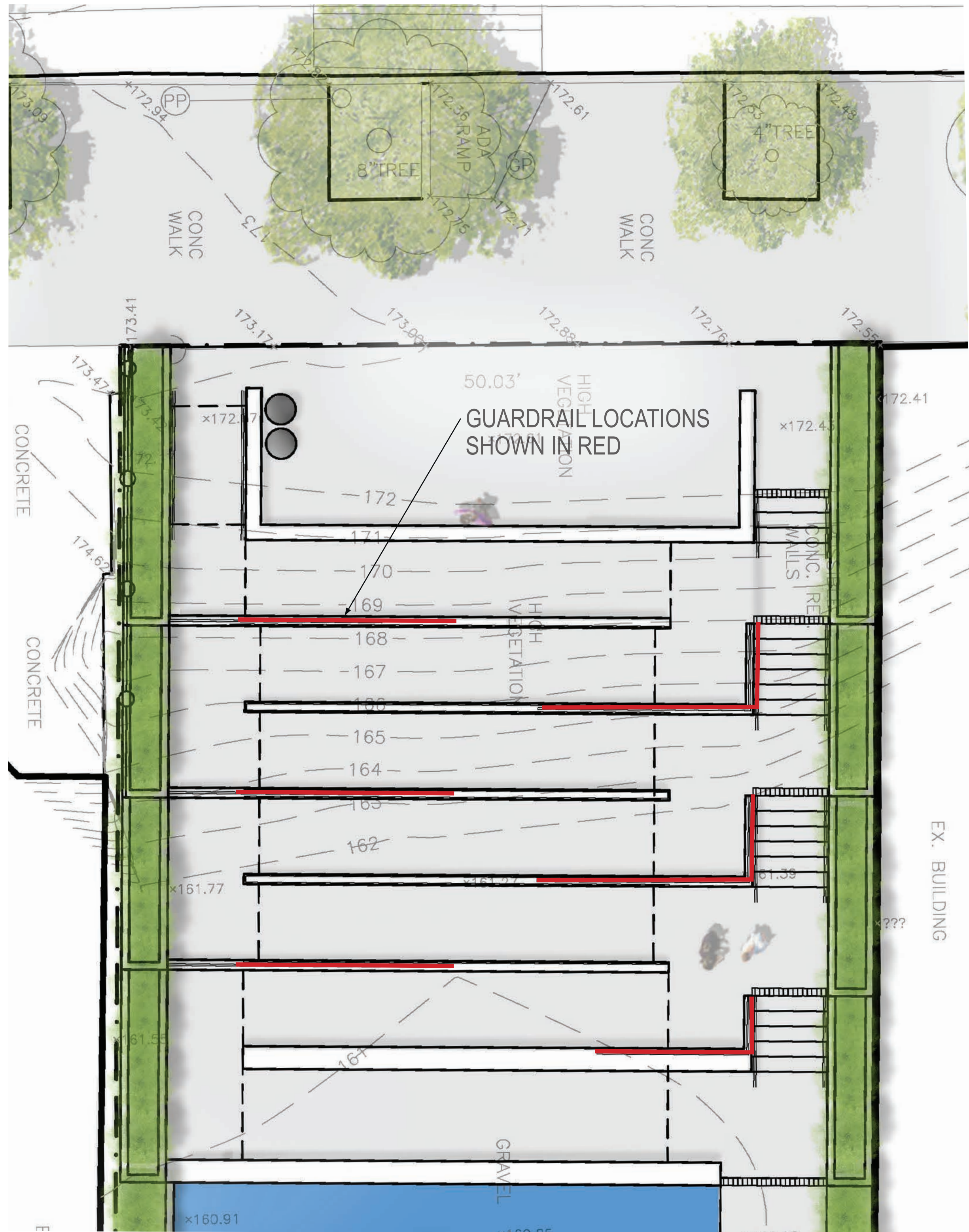
LOCATION OF PATTERNS TO BE SANDBLASTED AND PAINTED ONTO FRONT FACE OF BENCHES

LOCATIONS ON BENCHES

ARTIST GATEWAY FEATURE PATTERNS WITHIN THE PARK

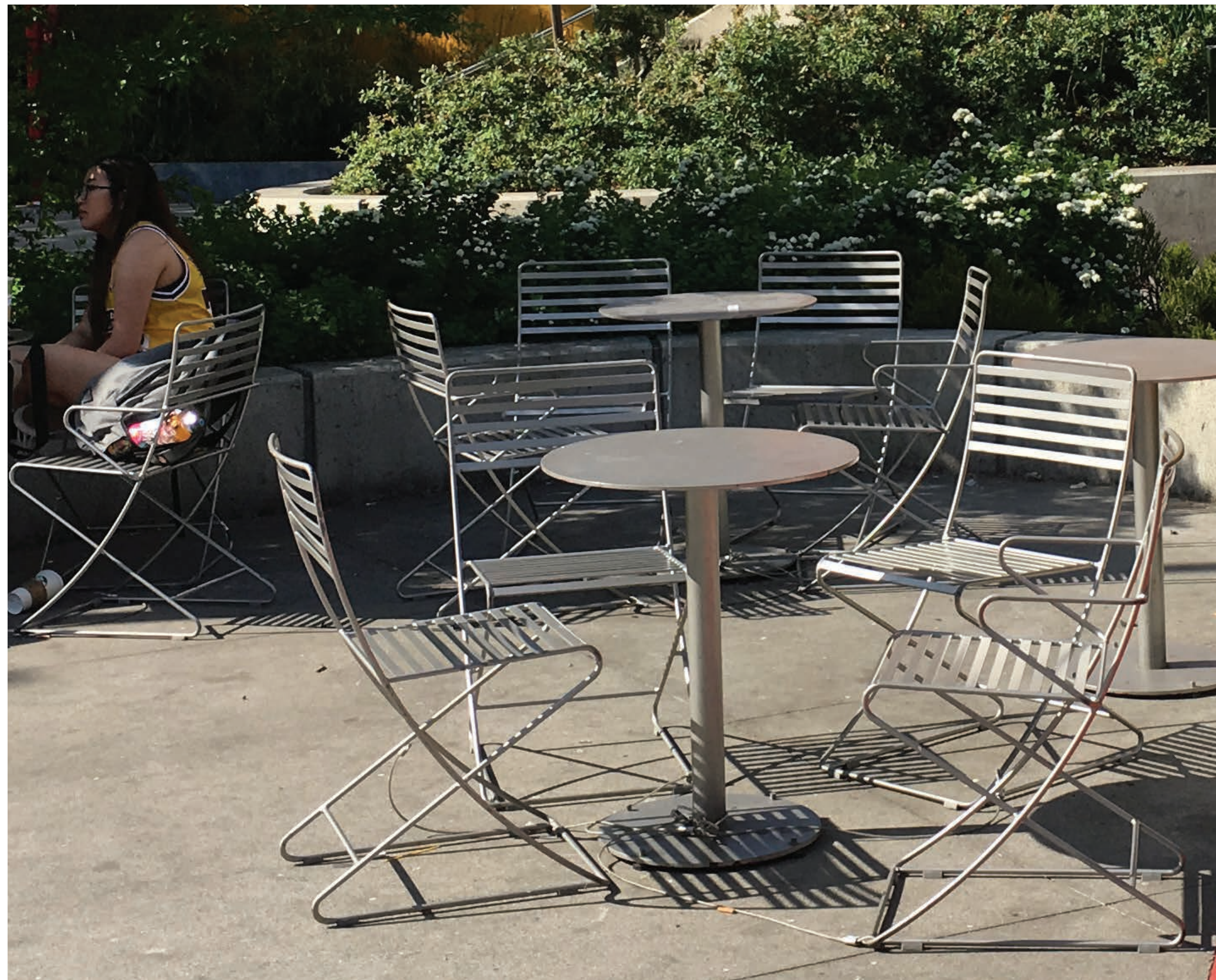
LITTLE SAIGON LANDBANKED SITE PARK PROJECT





GUARDRAILS

LITTLE SAIGON LANDBANKED SITE PARK PROJECT



MOVEABLE TABLES AND CHAIRS



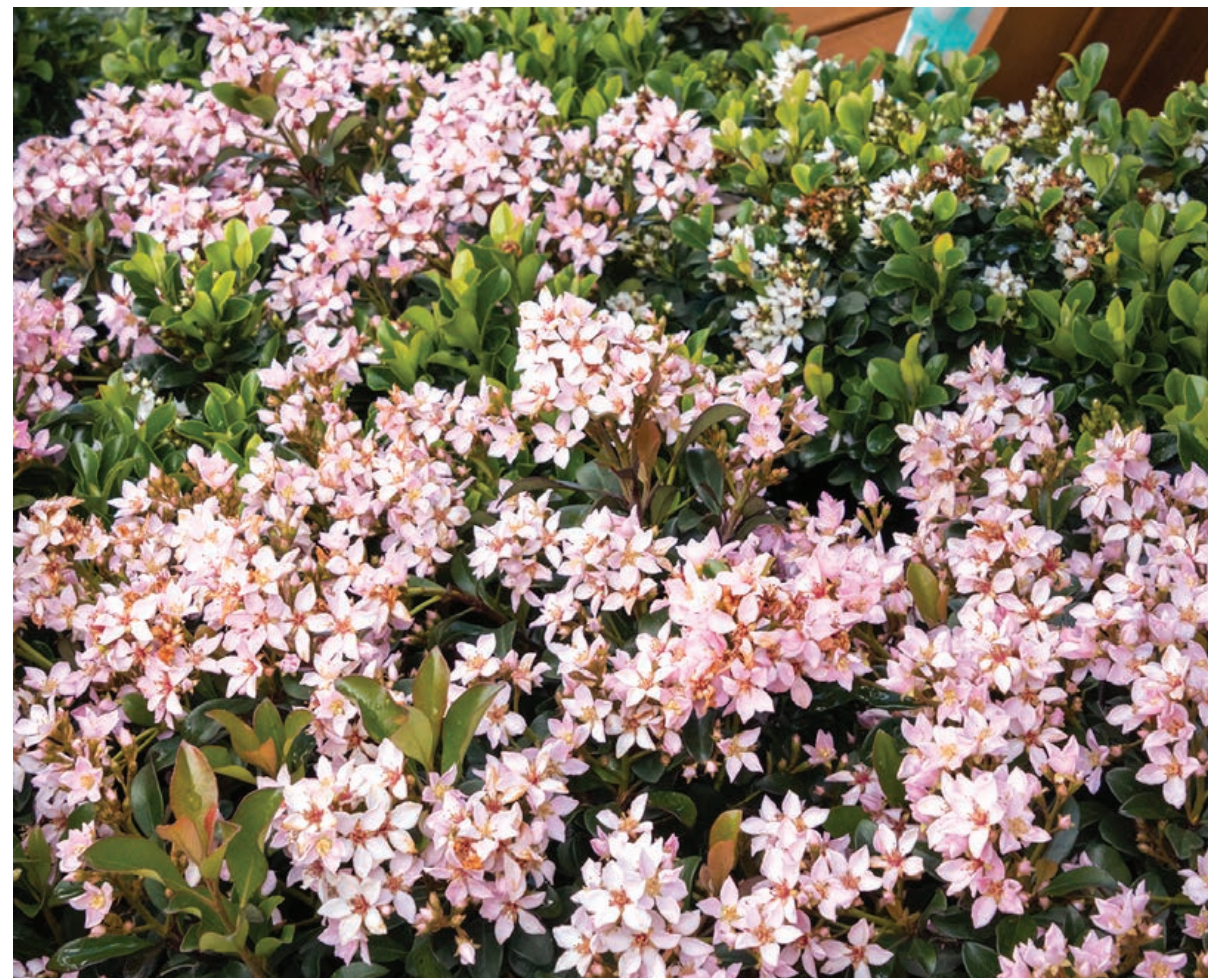
BIKE RACK



TRASH/ RECYCLING RECEPTACLE

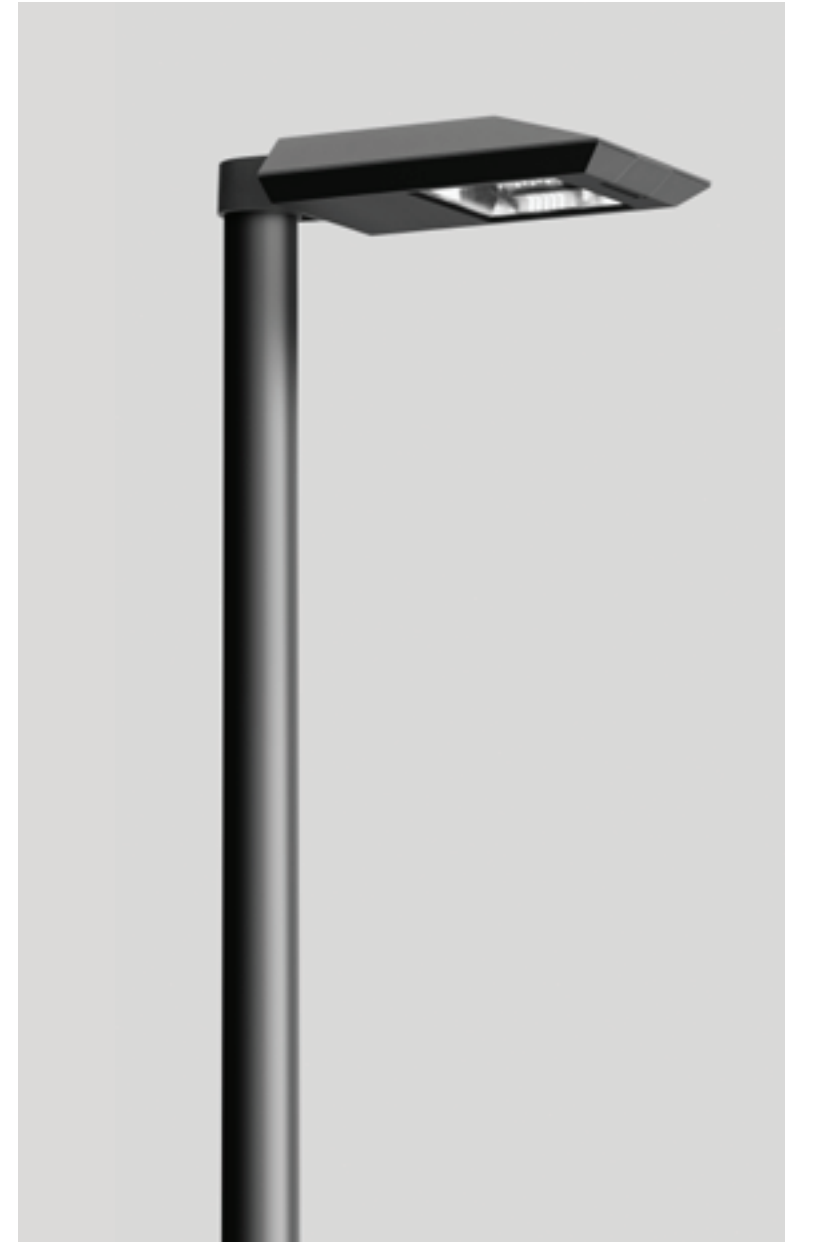
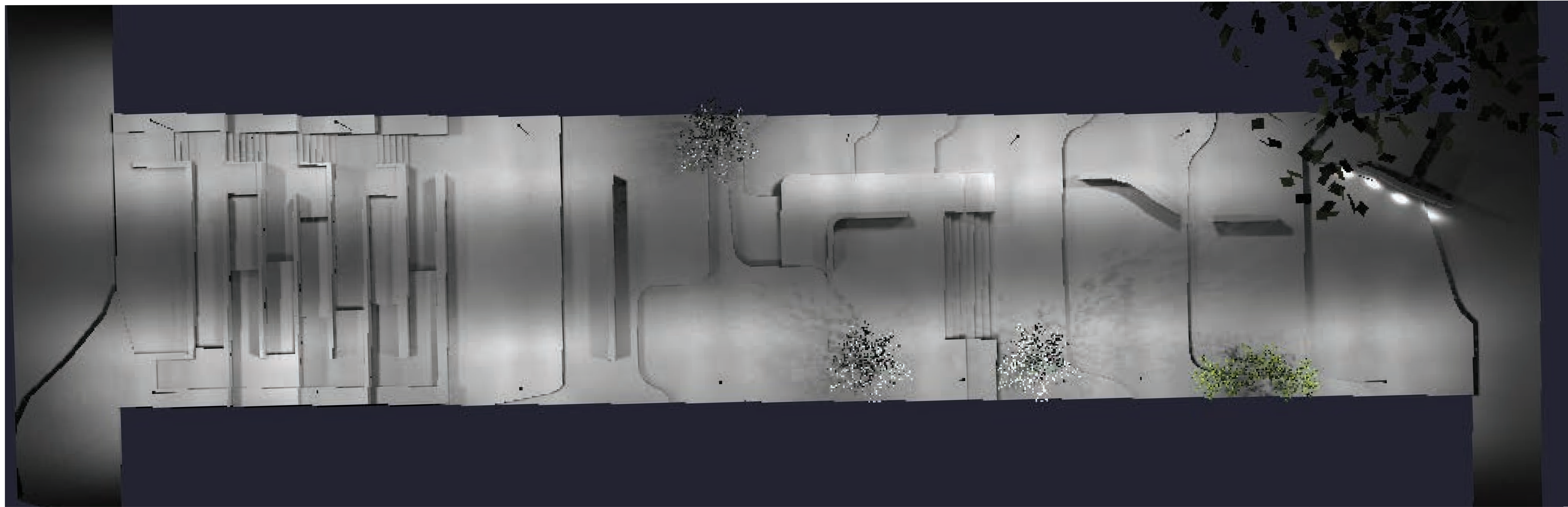
PROPOSED SITE FURNISHINGS

LITTLE SAIGON LANDBANKED SITE PARK PROJECT

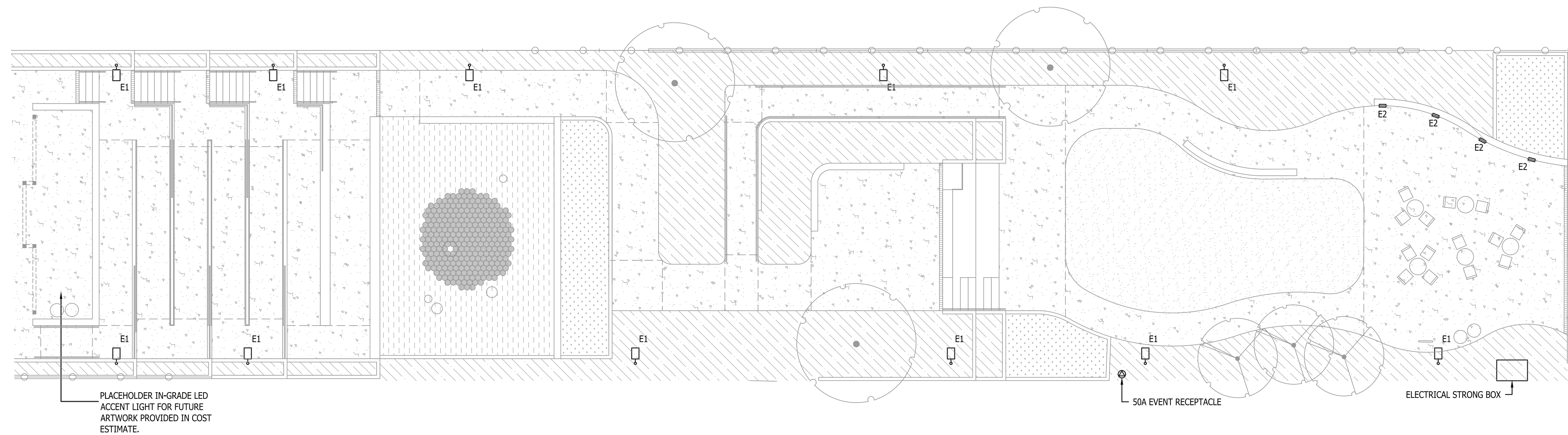


PLANT PALETTE

LITTLE SAIGON LANDBANKED SITE PARK PROJECT



PROPOSED POLE LIGHT



PHOTOMETRIC LIGHTING RENDERING AND LIGHTING PLAN

LITTLE SAIGON LANDBANKED SITE PARK PROJECT

