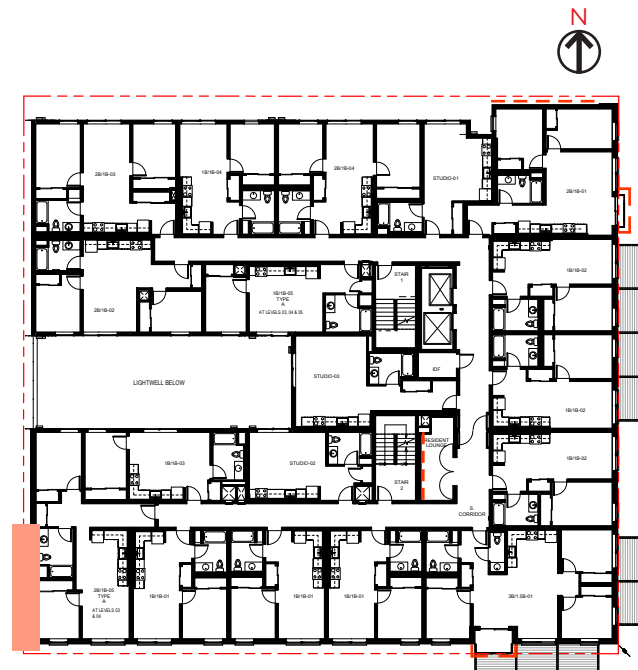
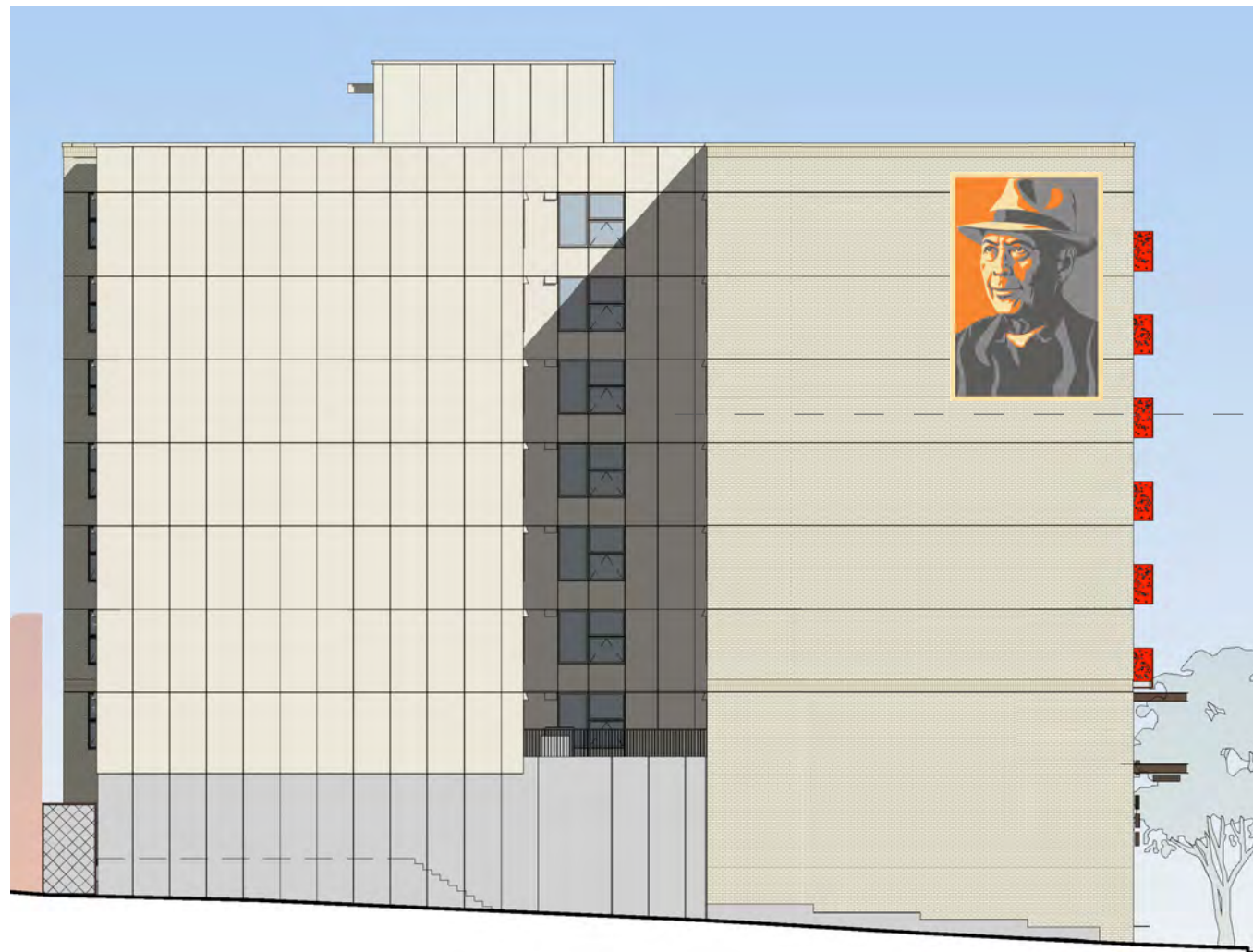




# UNCLE BOB'S PLACE BRICK WALL MURAL DESIGN



Upper Level Plan - Brick Wall Mural Location



Brick Wall Mural Location

## Brick Wall Mural

### Project Description

- Concept/Theme: Announce Uncle Bob's Place and provide comforting and hopeful presence of Uncle Bob overlooking the neighborhood.
- Artist: John Santos
- Mural Size: 16'-8" wide x 25'-0" tall
- Mural will be painted by a sign painting contractor.
- This exterior art location has been identified as a mural location in the previously approved ISRD submittal. It is visually impactful from a distance.
- As with other works of art at the Uncle Bob's Place, the artist will retain all copyrights and other intellectual property interests in the designs.

### Community Process for Mural Design

- At various CID community events early in the development of Uncle Bob's Place, InterIm CDA put out a call for volunteers wishing to serve on the Uncle Bob's Place Art & Aesthetic Integration Committee (Art Committee). The Art Committee is made up of 7 individuals, 5 artists who have all worked extensively in the CID, 1 CID resident, and 1 community advocate. Each Art Committee member holds years, even decades, of deep engagement and advocacy experience in the CID neighborhood, as well as strong social, cultural, and family ties within the community, and just about all knew and loved Uncle Bob. The Art Committee is charged with guiding the public art and interpretive elements at Uncle Bob's Place in a way that integrates with and complements the building design.
- The selection of John Santos to design the portrait mural for the building is in part based on John's prior work on the building's logo which the Art Committee wished to expand on, and partly out of reverence for the special meaning imparted to the work by having John Santos, one of Uncle Bob's sons, create the vision he wanted to see of his father on the building. In the early art planning stages of this process, the Art Committee had designated the west facing wall as the place to feature a large portrait of Uncle Bob - to announce Uncle Bob's Place and provide the comforting and hopeful presence of Uncle Bob overlooking the neighborhood.
- The process for developing the design involved some back and forth between the artist and the Art Committee to hone in on the image and color. The placement and sizing of the mural on the wall is meant to maximize visibility for pedestrians along S King St, and to clear the neighboring Bing Kung roof line for full visibility from some far off high vantage point. Once the design was established, the Uncle Bob's Place Steering Committee reviewed the design and approved it with overwhelming enthusiasm. The Steering Committee includes Uncle Bob's widow along with 6 long time CID community members who were close to Uncle Bob and are trusted by his family. The Steering Committee guides the overall Uncle Bob's Place effort to keep it true to his spirit.





Street Level View from SW Corner of 7th Ave. S & S. King St



Street Level View from across the street - Canton Alley & S. King St

### Undercoat/Paint/Anti-Graffiti Information

Top Coat: Sherwin Williams  
Anti-Graffiti Coating 1K  
Siloxane Clear (B97C00150)



NovaColor Indian Yellow  
(Product #106)



Golden Paints Titan Buff  
(Product #1370)



Golden Paints Neutral Gray 6  
(Product #1446)



Golden Paints Neutral Gray 4  
(Product #1444)



Mix as needed:  
Golden Paints Titanium White  
(Product #1380)

Undercoat: NovaColor Gesso  
(Product #200)



Uncle Bob's Portrait - Mural Design

- Unercoat: Before painting begins, brick will be primed and sealed using a high quality artist grade outdoor gesso (NovaColor Gesso, Product #200). Artist gesso not only bonds permanently to masonry, but is more durable & holds more pigment to ensure longerlasting colors than traditional primers. Exterior gesso is more breathable and flexible than industrial primers and is designed to prevent bubbles or cracks from cropping up over time. Gesso will be applied with a brush to ensure maximum longevity. Exterior gesso will allow the brick & mortar to expand and contract beneath, but it is more suitable as the mural paint undercoat.
- Paint: The sign painter will use only non-cadmium pure pigment Novacolor or Golden Paints acrylic artist paints. These are the industry standard for large permanent outdoor mural work, and have a great reputation for longevity & standing up to the elements. See above for the proposed colors.
- Anti-Graffiti: After mural painting is complete, Marpac Construction will be applying clear silicone coating over the painting (Sherwin Williams Anti-Graffiti Coating 1K Siloxane Clear B97C00150). This coating will also provide weatherproofing and UV protection.



PROJECT  
**UNCLE BOB'S  
PLACE**

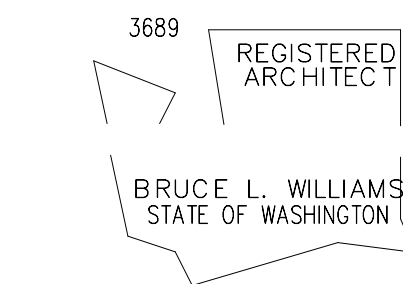
LOCATION  
**714 S KING STREET  
SEATTLE, WA**

PREPARED FOR  
**INTERIM CDA**

[illegible]

PROJECT DIRECTOR  
AMT  
PROJECT MANAGER  
DL  
PROJECT ARCHITECT  
MDS  
PROJECT DESIGNER  
CH  
PROJECT TEAM MEMBERS  
WP, KM, GG, DW  
CHECK  
MDS

ARCHITECT SEA

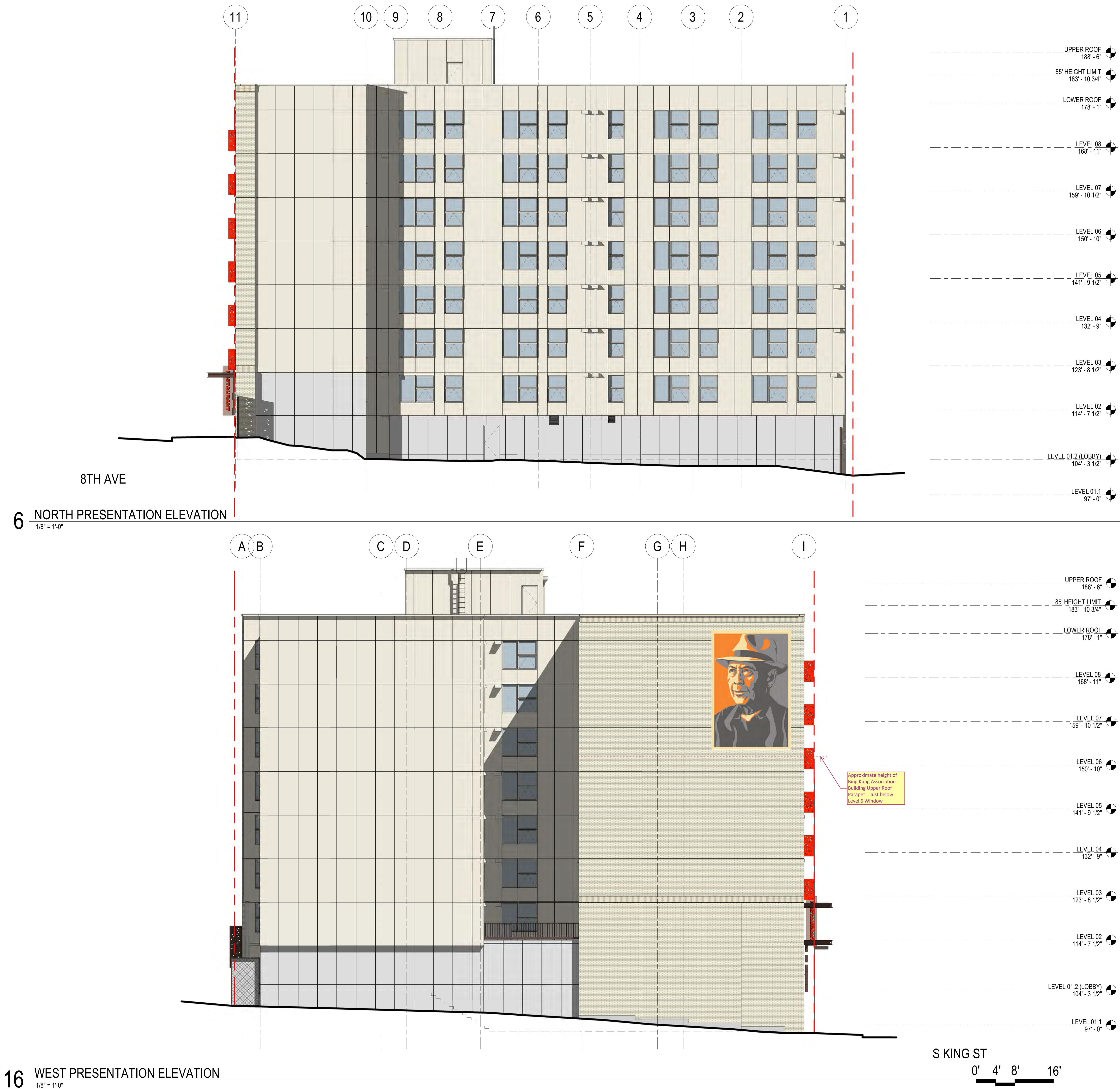


SEATTLE DCI / OPOD APPROVAL STAMP

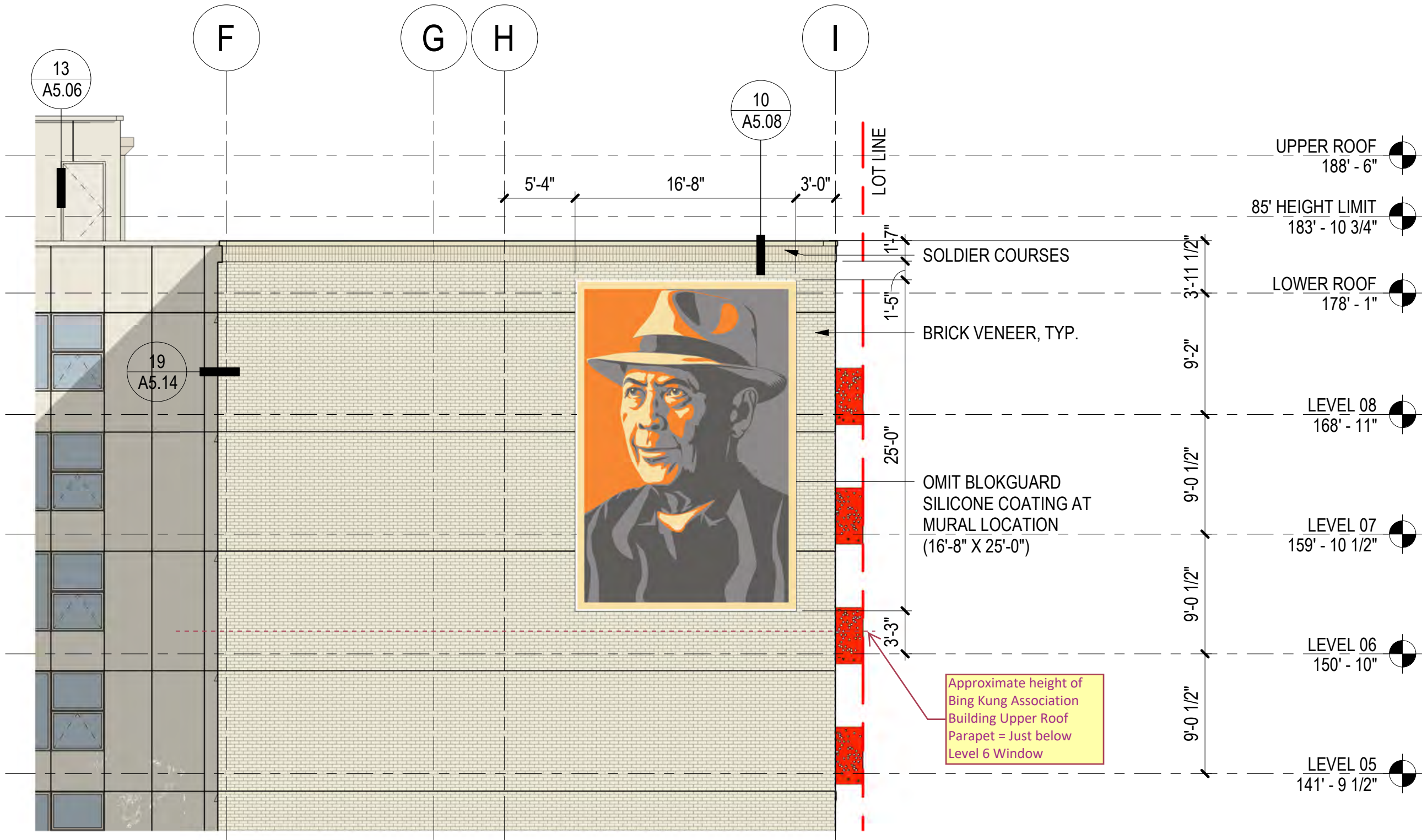
# TITLE BUILDING ELEVATIONS

PROJECT NO.  
**17244**  
DATE  
**SEPTEMBER 1, 2017**

SHEET NUMBER  
**A3.002**  
CA  
© 2017 MITHUN, INC.







1 BUILDING ELEVATION\_WEST\_MURAL LOCATION  
1/8" = 1'-0"

ORIGINAL SHEET SIZE 11" x 17"

**MITHUN**

SEATTLE / Pier 56 / 1201 Alaskan Way, #200  
Seattle, WA 98101 / 206.623.3344

SAN FRANCISCO / 660 Market Street, #300  
San Francisco, CA 94104 / 415.956.0688

mithun.com

PROJECT TITLE  
UNCLE BOB'S PLACE  
DRAWING TITLE  
WEST FACADE MURAL LOCATION - NO  
BLOKGUARD

PROJECT NO.  
17244  
ISSUED  
05/19/22  
REVISED

SCALE  
1/8" = 1'-0"  
CHECKED BY  
MDS  
SHEET REF.:  
A3.02

PROJECT MANAGER  
DL  
DRAWN BY  
MDS  
ISSUED WITH  
ASI-014  
SKETCH NUMBER  
ASK-53