



Original Building Photo.



Building prior to renovation – 2018.



Building after renovation.



New Storefront and main building entry at completion.



Roof structure completely removed and walls braced.



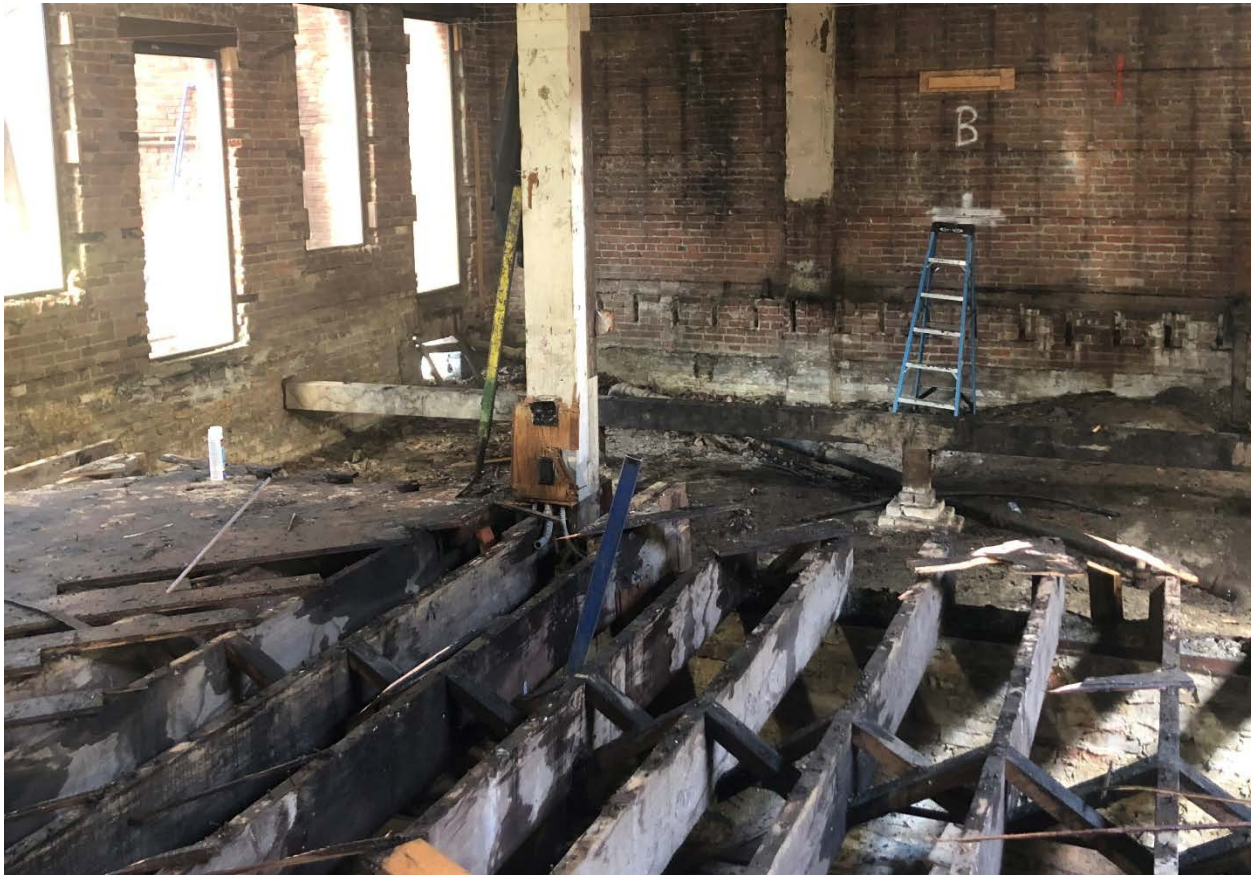
New roof structure and 2<sup>nd</sup> floor interior wall framing with new windows and skylights.



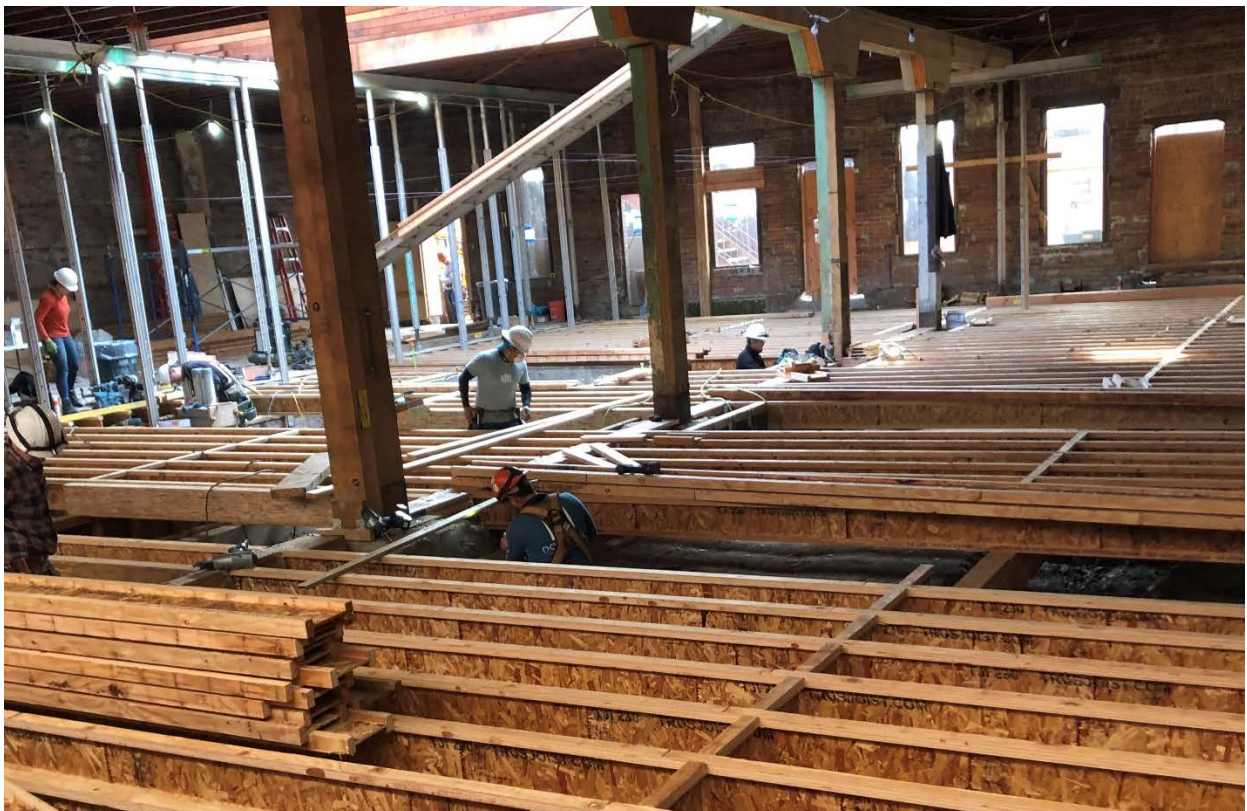
New 2<sup>nd</sup> floor framing, seismic brace frame and insulation.



2<sup>nd</sup> floor at completion.



Demolition of 1<sup>st</sup> floor structure.



New 1<sup>st</sup> floor structure.



New 1<sup>st</sup> floor seismic brace frame.



Framing new interior stair.



Completed new interior stair and steel wall. New elevator (at far right).



Masonry repairs and tuck pointing in progress.



Exterior rear wall prior to tuck pointing.



Exterior rear wall after tuck pointing and new window installation.



Completed courtyard with new exterior stair, fencing and landscaping.