

Project No. 200420

Signage Package

5201 Ballard Ave NW

Seattle, WA 98107

USA

One Medical

••• one medical

IDENTITI



LEGEND

- Blade Sign BS 1-1
- Vinyl - Entry Door (V1-1)



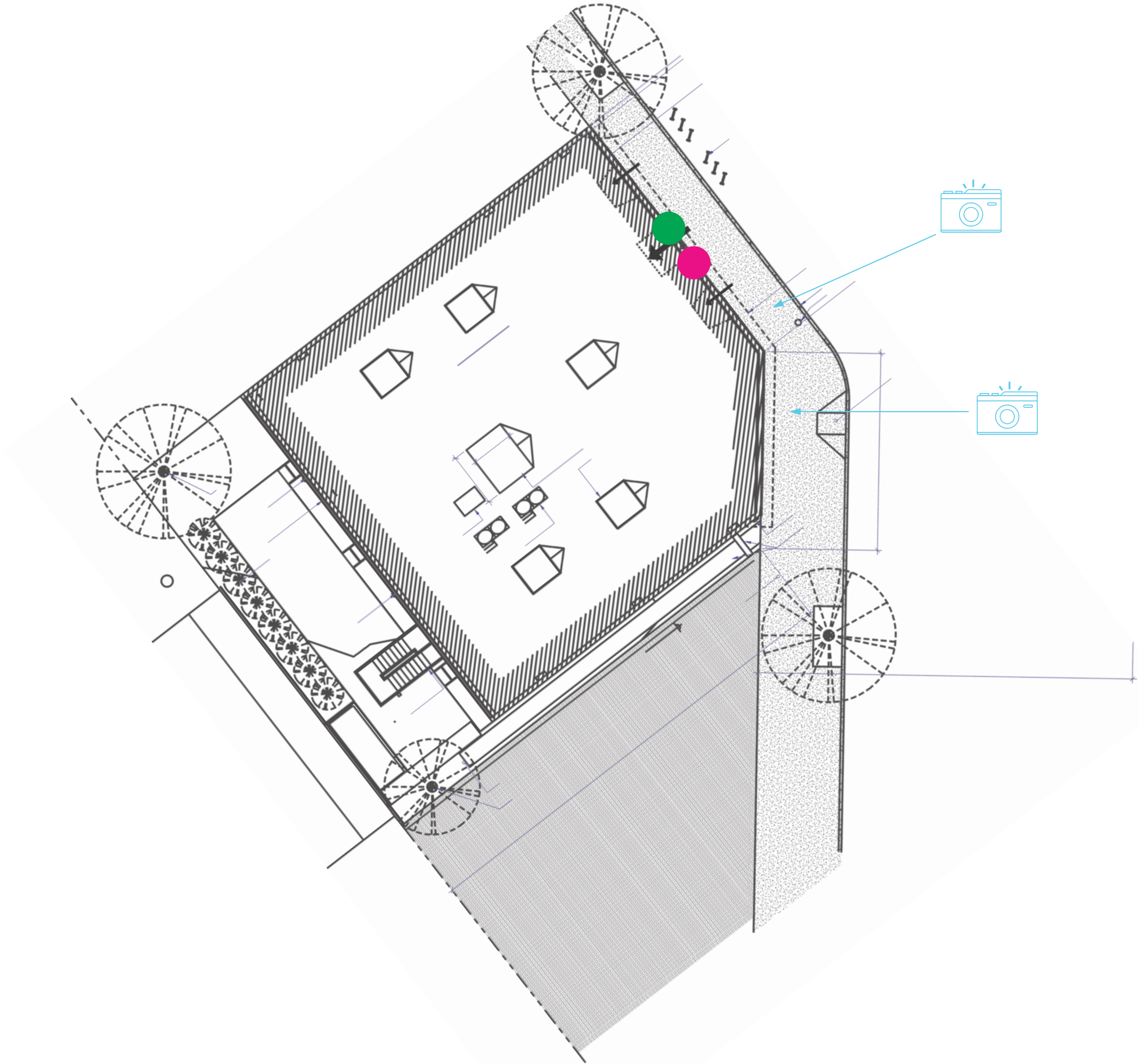
Site Plan - Overview

Project No.	200420
Project	One Medical
Location	5201 Ballard Ave NW Seattle, WA 98107 USA
Orig. Draft	04.06.20
Project Mgr.	Caleb Little
Designer	Irniss
Rev. Art	Lila Roblin
Rev. Date	10.28.2020
Page Rev.	008
Rev. Details	Added cardinal directions and photo view points

This sign design is exclusive property of Identiti Resources, LTD., and is the result of the original and creative work of it's employees. This drawing is submitted to the customer for the sole purpose of purchase of the design or signage manufactured to this design, by Identiti Resources, LTD. Distribution to or use of this sign design by anyone outside of the customer's organization, without expressed, written authorization by Identiti Resources, LTD. is prohibited.



425 N Martingale Rd
18th Floor
Schaumburg, IL 60173
O ce 847.301.0510
identiti.net



BS1-1

Proposed Signage = 8 SF

- Relevant Signage Code**
- Ballard Historical limits signs based on style rather than frontage.
 - Blade signs are required to be 8 Sq. Ft. or less.

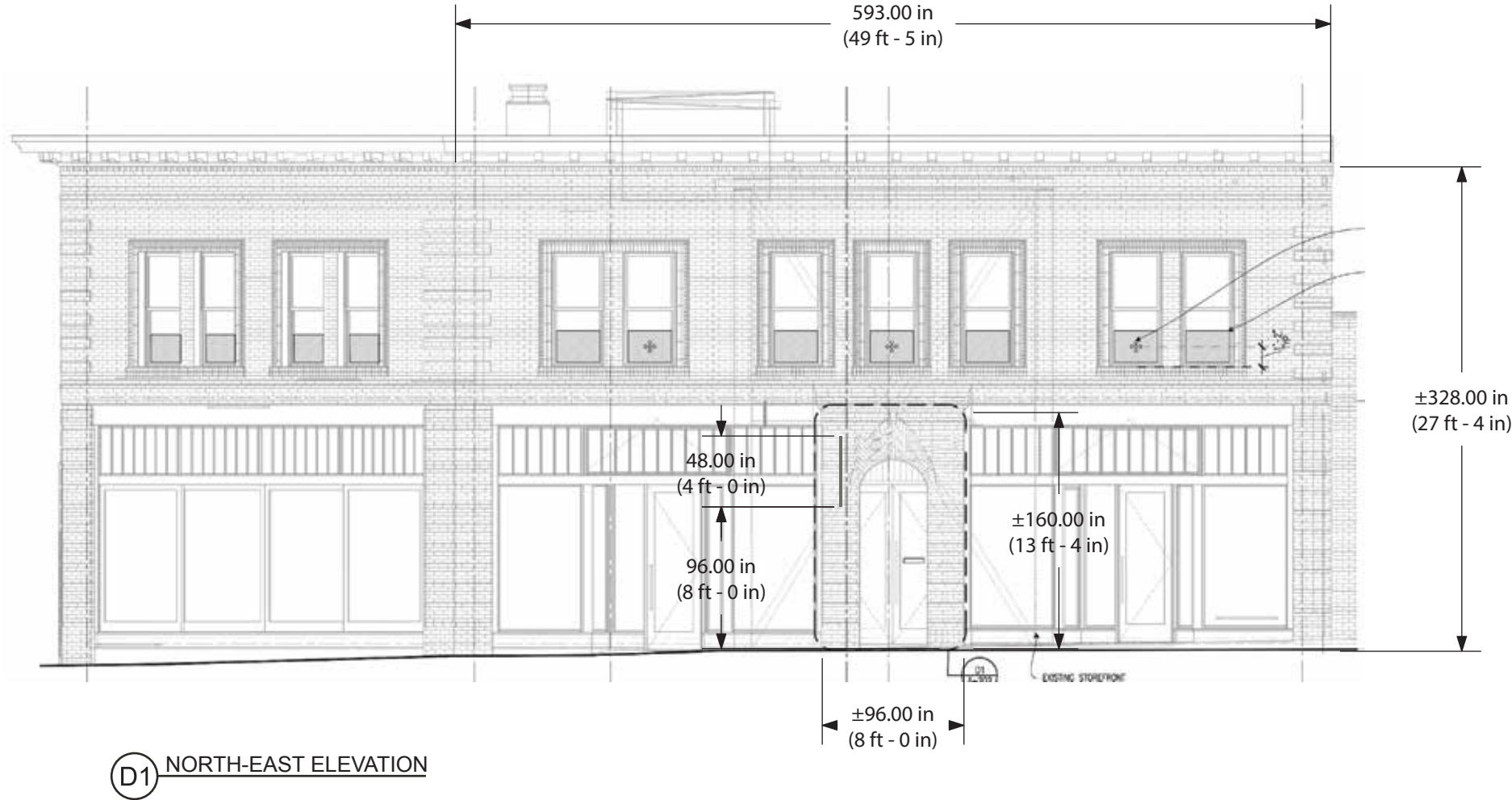
Sign Type
Routed Aluminum Blade Sign
w/1/4"FCO Aluminum Letters

Mounting
Side Mounted to Facade

- Color Palette**
- Painted White Aluminum
 - Panel: PMS 2333 C
 - N/A
 - N/A
 - N/A

Project No.	200420
Project	One Medical
Location	5201 Ballard Ave NW Seattle, WA 98107 USA
Orig. Draft	04.06.20
Project Mgr.	Caleb Little
Designer	Irniss
Rev. Art	Lila Roblin
Rev. Date	10.28.2020
Page Rev.	008
Rev. Details	Added cardinal directions & revised color palette

This sign design is exclusive property of Identiti Resources, LTD., and is the result of the original and creative work of it's employees. This drawing is submitted to the customer for the sole purpose of purchase of the design or signage manufactured to this design, by Identiti Resources, LTD. Distribution to or use of this sign design by anyone outside of the customer's organization, without expressed, written authorization by Identiti Resources, LTD. is prohibited.



BS1-1

Proposed Signage = 8 SF

Relevant Signage Code
- Ballard Historical limits signs based on style rather than frontage.
- Blade signs are required to be 8 Sq. Ft. or less.

Sign Type
Routed Aluminum Blade Sign
w/ 1/4" FCO Aluminum Letters

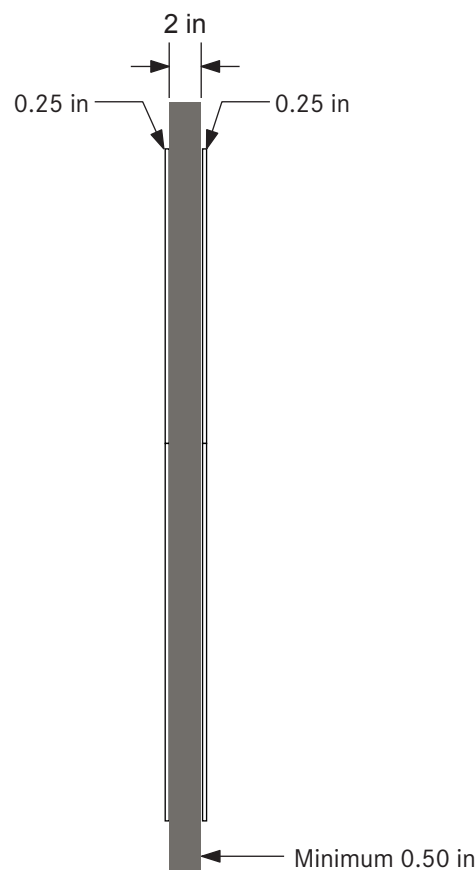
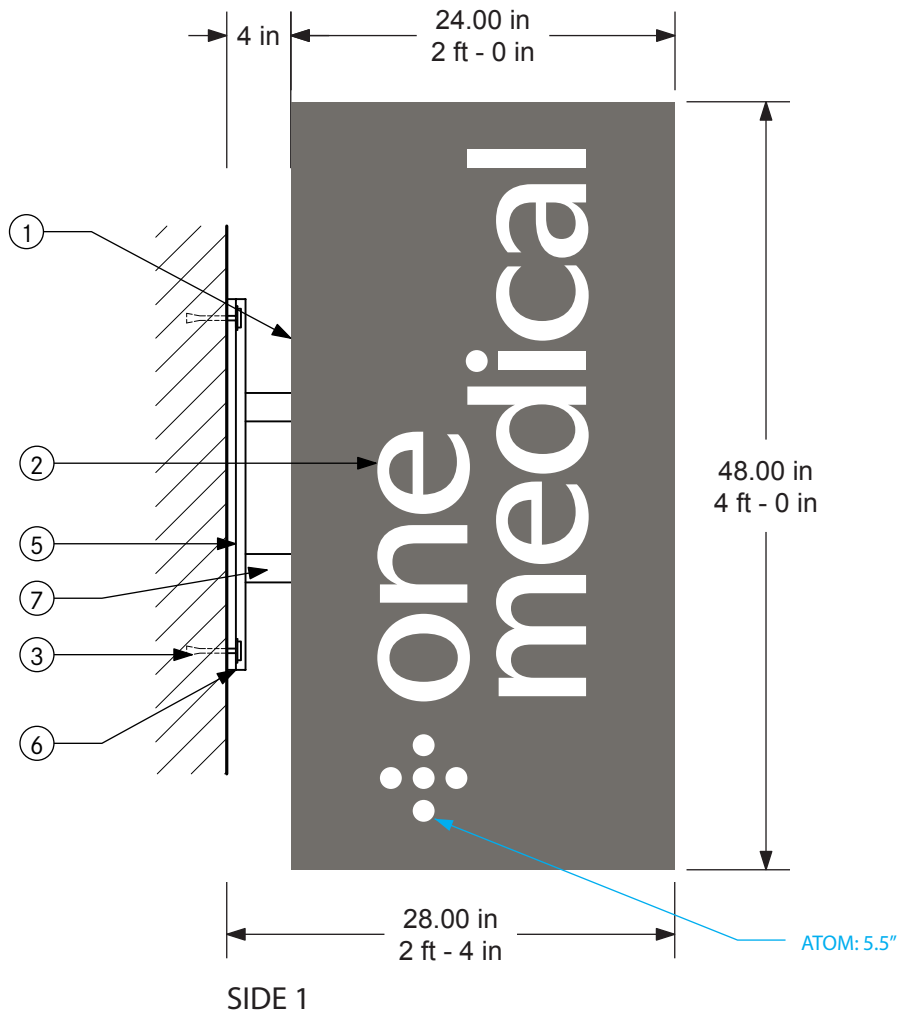
Mounting
Side Mounted to Facade

- Color Palette**
- Painted White Aluminum
 - Panel: PMS 2333 C
 - N/A
 - N/A
 - N/A

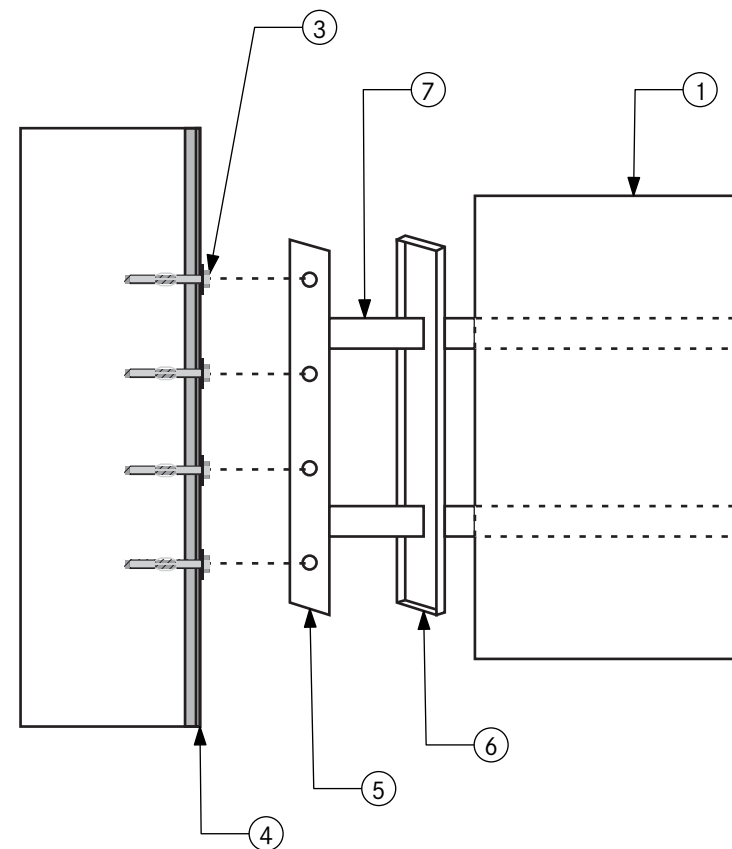
Project No. 200420
Project One Medical
Location 5201 Ballard Ave NW
Seattle, WA 98107
USA
Orig. Draft 04.06.20
Project Mgr. Caleb Little
Designer Irniss
Rev. Art Lila Roblin
Rev. Date 10.28.2020
Page Rev. 008
Rev. Details Removed Illumination note
& revised color palette

This sign design is exclusive property of Identiti Resources, LTD., and is the result of the original and creative work of it's employees. This drawing is submitted to the customer for the sole purpose of purchase of the design or signage manufactured to this design, by Identiti Resources, LTD. Distribution to or use of this sign design by anyone outside of the customer's organization, without expressed, written authorization by Identiti Resources, LTD. is prohibited.

IDENTITI
425 N Martingale Rd
18th Floor
Schaumburg, IL 60173
O ce 847.301.0510
identiti.net



NON-ILLUMINATED BLADE	
1	DOUBLE SIDED NON-ILLUMINATED .090 ROUTED ALUMINUM PANELS PAINTED PMS 403 C
2	1/4" ALUMINUM COPY MOUNTED FLUSH TO PANEL FACE
3	MOUNTING ANCHOR: EXPANSION ANCHORS IN MORTAR JOINT
4	HISTORICAL MODULAR BRICK OVER CMU
5	1/4" THICK ALUMINUM PLATE COVER 3' WIDE FLAT STOCK
6	1" DEEP ALUMINUM PLATE COVER PAINTED PMS 2333C
7	1" SQUARE ALUMINUM TUBE (QTY 2) PAINTED PMS 2333C



V1-1

Proposed Signage = 0.6 SF

Relevant Signage Code
N/A

Sign Type
Applied Vinyl

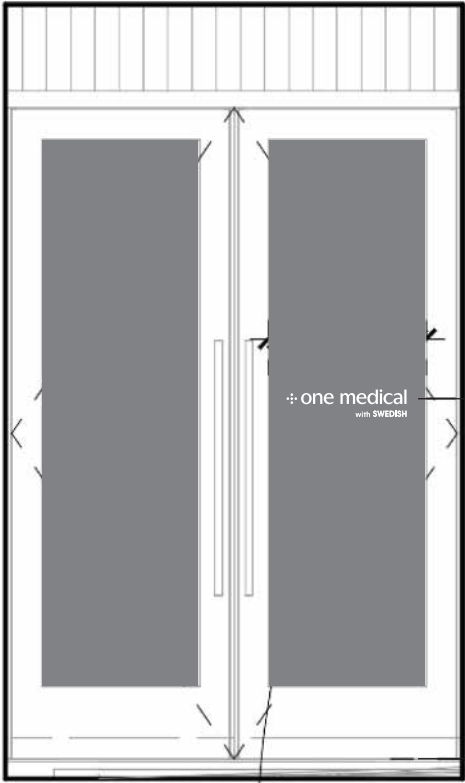
Mounting
Second Surface

Color Palette

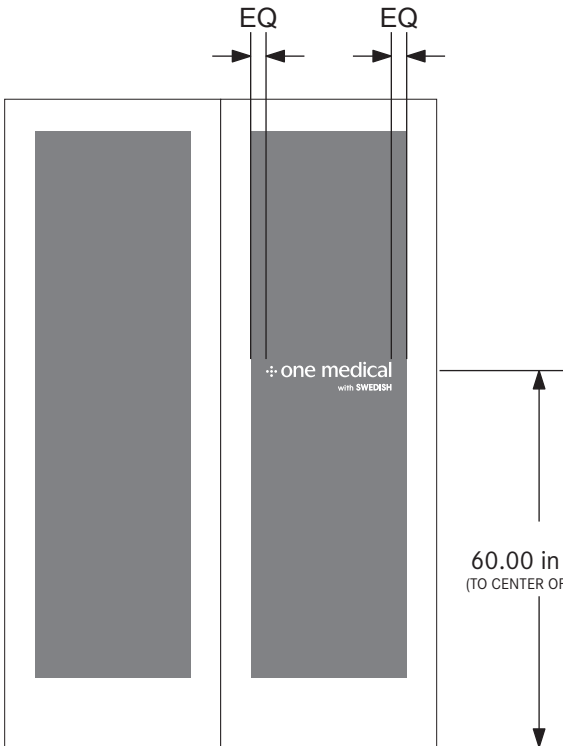
- Vinyl: White
- N/A
- N/A
- N/A
- N/A

Project No.	200420
Project	One Medical
Location	5201 Ballard Ave NW Seattle, WA 98107 USA
Orig. Draft	04.06.20
Project Mgr.	Caleb Little
Designer	Irniss
Rev. Art	Lila
Rev. Date	04.20.2020
Page Rev.	001
Rev. Details	Added Swedish co-brand to door vinyl

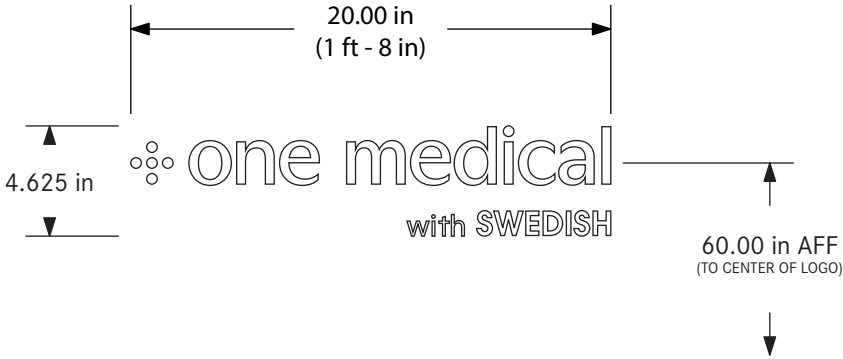
This sign design is exclusive property of Identiti Resources, LTD., and is the result of the original and creative work of it's employees. This drawing is submitted to the customer for the sole purpose of purchase of the design or signage manufactured to this design, by Identiti Resources, LTD. Distribution to or use of this sign design by anyone outside of the customer's organization, without expressed, written authorization by Identiti Resources, LTD. is prohibited.



Scale: 3/8" = 1'-0"



ENTRY DOOR RENDER
SCALE: NTS



Scale: 1-1/2" = 12"

V2-1

Proposed Signage = 0.6 SF

Relevant Signage Code
N/A

Sign Type
Applied Vinyl

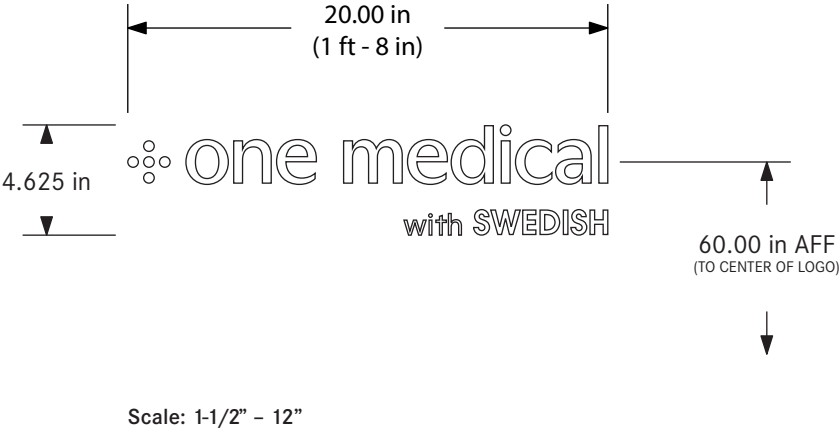
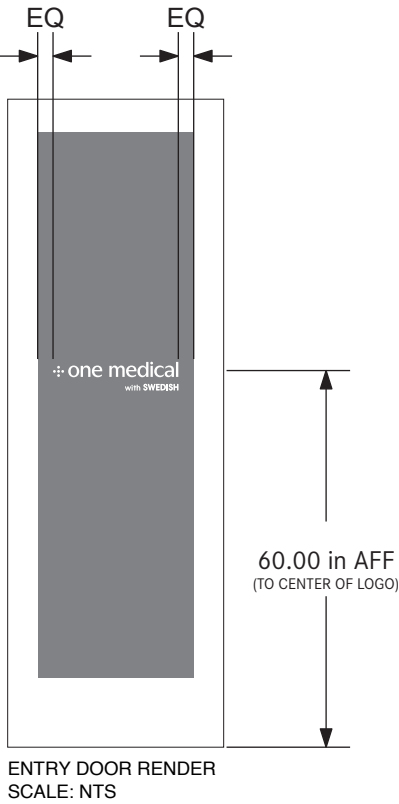
Mounting
Second Surface

Color Palette

- Vinyl: White
- N/A
- N/A
- N/A
- N/A

Project No.	200420
Project	One Medical
Location	5201 Ballard Ave NW Seattle, WA 98107 USA
Orig. Draft	04.06.20
Project Mgr.	Caleb Little
Designer	Irniss
Rev. Art	Lila
Rev. Date	04.20.2020
Page Rev.	001
Rev. Details	Added Swedish co-brand and revised it to be on single door

and is the result of the original and creative work of it's employees. This drawing is submitted to the customer for the sole purpose of purchase of the design or signage manufactured to this design, by Identiti Resources, LTD. Distribution to or use of this sign design by anyone outside of the customer's organization, without expressed, written authorization by Identiti Resources, LTD. is prohibited.



Window Vinyl - Front Elevation

V3-1

Proposed Signage = 0.44 SF

Relevant Signage Code
N/A

Sign Type
Applied Vinyl
QTY: 7

Mounting
Second Surface

Color Palette

- PMS 329c
- N/A
- N/A
- N/A
- N/A

Project No. 200420
Project One Medical
Location 5201 Ballard Ave NW
Seattle, WA 98107
USA
Orig. Draft 04.06.20
Project Mgr. Caleb Little
Designer Irniss
Rev. Art Lila Roblin
Rev. Date 10.28.2020
Page Rev. 008
Rev. Details Added cardinal directions

This sign design is exclusive property of Identiti Resources, LTD., and is the result of the original and creative work of it's employees. This drawing is submitted to the customer for the sole purpose of purchase of the design or signage manufactured to this design, by Identiti Resources, LTD. Distribution to or use of this sign design by anyone outside of the customer's organization, without expressed, written authorization by Identiti Resources, LTD. is prohibited.

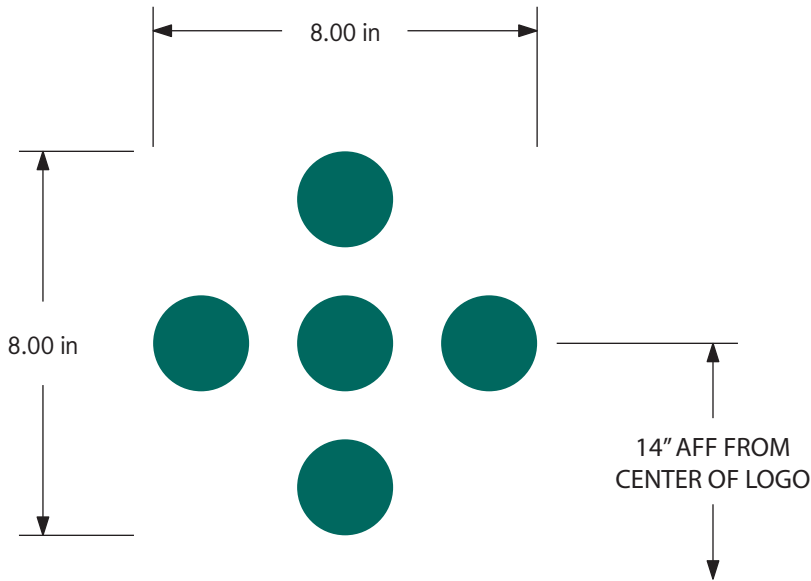


425 N Martingale Rd
18th Floor
Schaumburg, IL 60173
O ce 847.301.0510
identiti.net

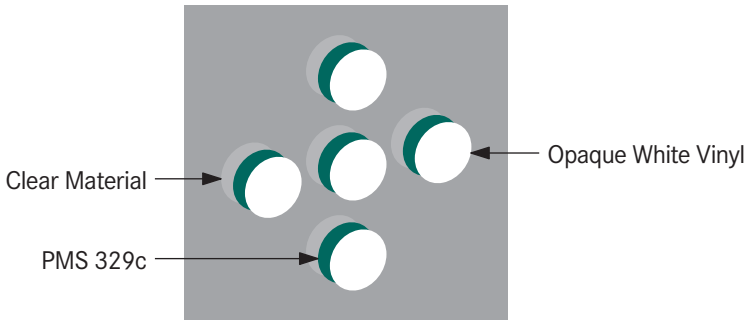
LOGO TO BE ALIGNED ACROSS ALL WINDOWS



D1 NORTH-EAST ELEVATION



Scale: 3" - 12"



Color Specifications
Digitally printed PMS 329c on clear material
and flooded white before die cutting

V3-2

Proposed Signage = 0.44 SF

Relevant Signage Code
N/A

Sign Type
Applied Vinyl
QTY: 4

Mounting
Second Surface

Color Palette

- PMS 329c
- N/A
- N/A
- N/A
- N/A

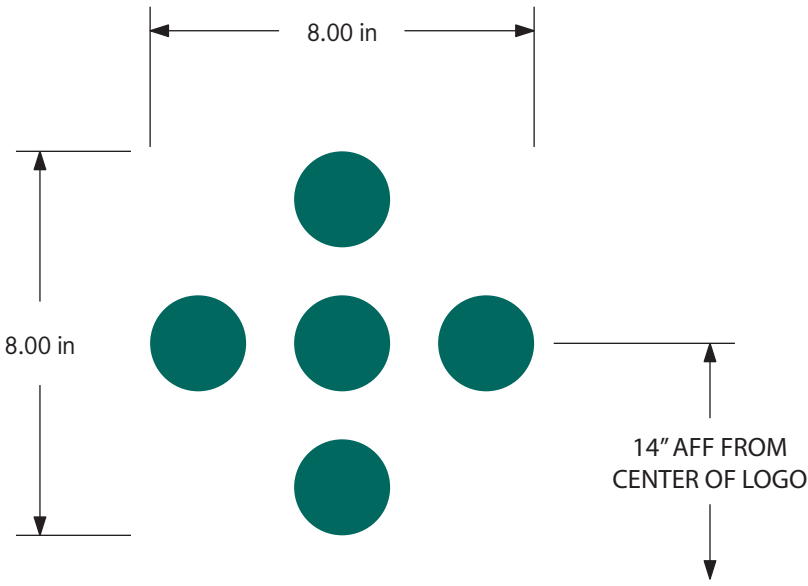
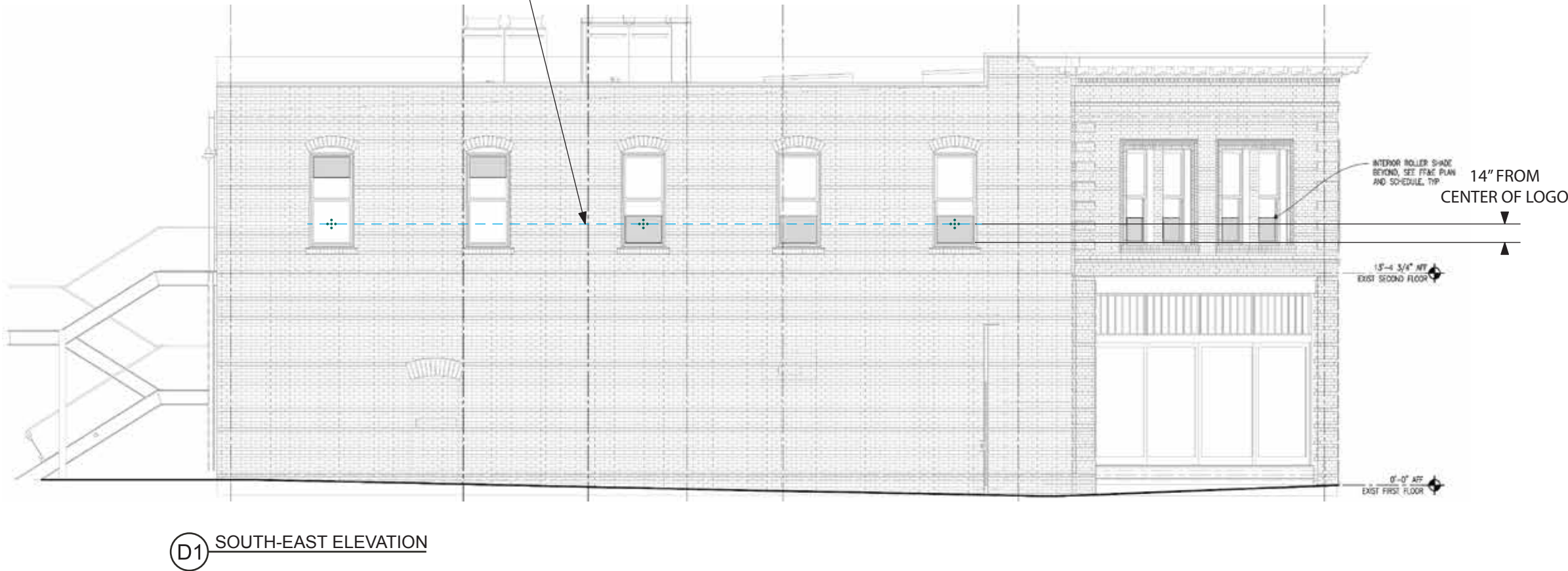
Project No. 200420
Project One Medical
Location 5201 Ballard Ave NW
Seattle, WA 98107
USA
Orig. Draft 04.06.20
Project Mgr. Caleb Little
Designer Irniss
Rev. Art Lila Roblin
Rev. Date 10.28.2020
Page Rev. 008
Rev. Details Added cardinal directions

This sign design is exclusive property of Identiti Resources, LTD., and is the result of the original and creative work of it's employees. This drawing is submitted to the customer for the sole purpose of purchase of the design or signage manufactured to this design, by Identiti Resources, LTD. Distribution to or use of this sign design by anyone outside of the customer's organization, without expressed, written authorization by Identiti Resources, LTD. is prohibited.

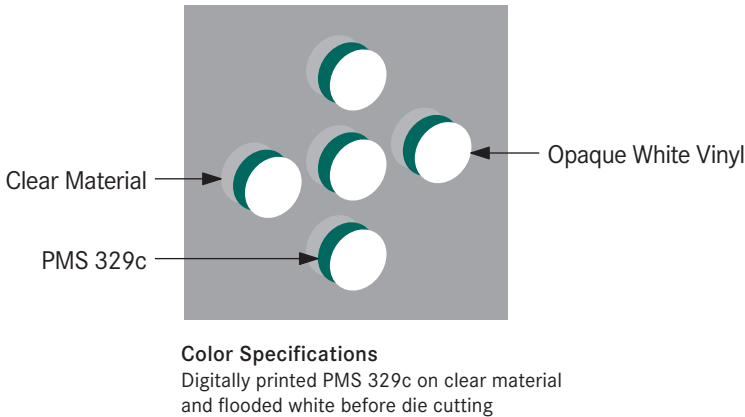


425 N Martingale Rd
18th Floor
Schaumburg, IL 60173
O ce 847.301.0510
identiti.net

LOGO TO BE ALIGNED ACROSS ALL WINDOWS



Scale: 3" - 12"



V3-3

Proposed Signage = 0.44 SF

Relevant Signage Code
N/A

Sign Type
Applied Vinyl
QTY: 1

Mounting
Second Surface

Color Palette

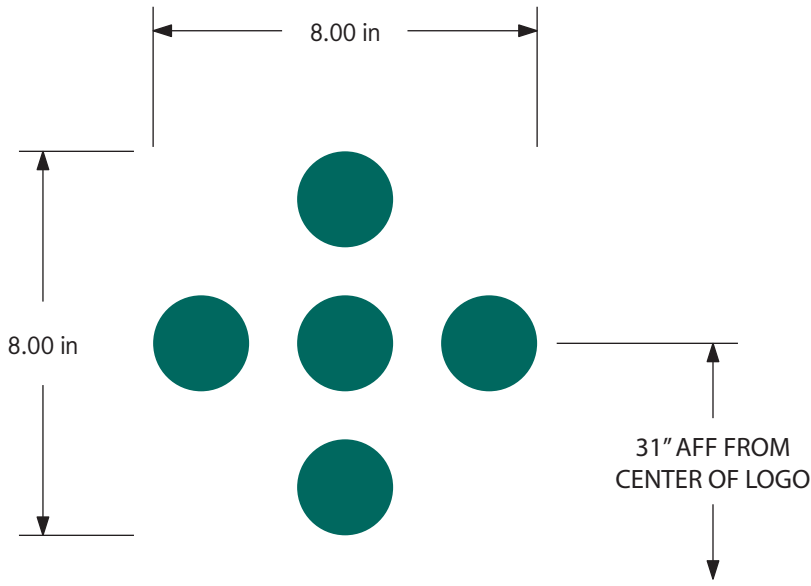
- PMS 329c
- N/A
- N/A
- N/A
- N/A

Project No. 200420
Project One Medical
Location 5201 Ballard Ave NW
Seattle, WA 98107
USA
Orig. Draft 04.06.20
Project Mgr. Caleb Little
Designer Irniss
Rev. Art Lila Roblin
Rev. Date 10.28.2020
Page Rev. 008
Rev. Details Added cardinal directions

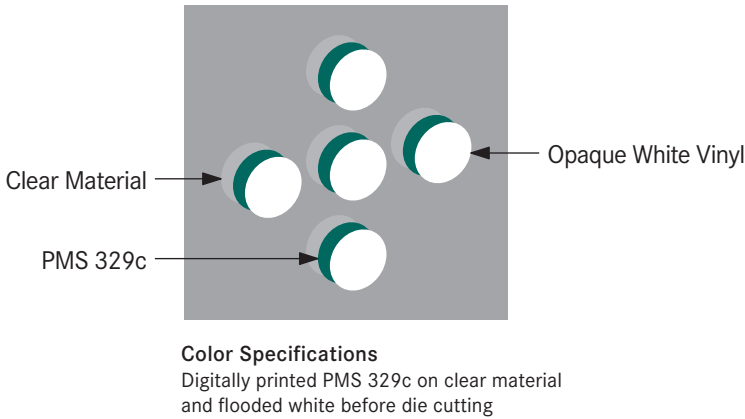
This sign design is exclusive property of Identiti Resources, LTD., and is the result of the original and creative work of it's employees. This drawing is submitted to the customer for the sole purpose of purchase of the design or signage manufactured to this design, by Identiti Resources, LTD. Distribution to or use of this sign design by anyone outside of the customer's organization, without expressed, written authorization by Identiti Resources, LTD. is prohibited.



425 N Martingale Rd
18th Floor
Schaumburg, IL 60173
O ce 847.301.0510
identiti.net



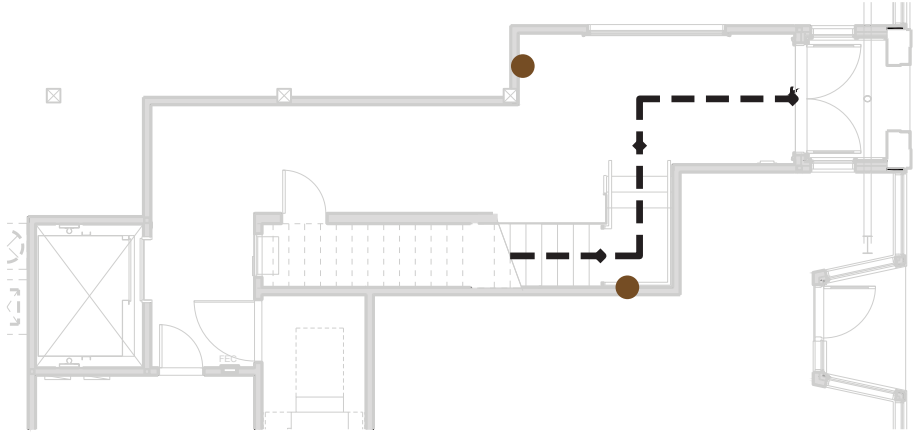
Scale: 3" - 12"



LEGEND	
Lobby Sign (I1-1)	●
Reception Sign (I2-1)	●
Reception Sign (I3-1)	●
Consult Door (I4-1)	●
Wayfinding (I5-2)	●
Wayfinding (I5-3)	●
Restroom (I6-1)	●
Stroller Parking (I7-1)	●
Window Vinyl (V3)	●



B1 LIFE SAFETY PLAN (UPPER FLOOR LEVEL)



A1 LIFE SAFETY PLAN (LOWER FLOOR LEVEL)

Interior Site Plan - Overview

Project No.	200420
Project	One Medical
Location	5201 Ballard Ave NW Seattle, WA 98107 USA
Orig. Draft	04.06.20
Project Mgr.	Caleb Little
Designer	Irniss
Rev. Art	Lila Roblin
Rev. Date	10.28.2020
Page Rev.	008
Rev. Details	Added cardinal directions

This sign design is exclusive property of Identiti Resources, LTD., and is the result of the original and creative work of it's employees. This drawing is submitted to the customer for the sole purpose of purchase of the design or signage manufactured to this design, by Identiti Resources, LTD. Distribution to or use of this sign design by anyone outside of the customer's organization, without expressed, written authorization by Identiti Resources, LTD. is prohibited.