



Ballard Ave Short Term Safety Improvements

20th Ave NW-22nd Ave NW



Our vision, mission, and core values

Vision: Seattle is a thriving equitable community powered by dependable transportation

Mission: to deliver a transportation system that provides safe and affordable access to places and opportunities

Committed to **6 core values:**

- Equity
- Safety
- Mobility
- Sustainability
- Livability
- Excellence

Presentation overview

1. Background
2. Landmark District Values and Priorities
3. Observations
4. Short Term Safety Recommendations
5. Engagement
6. Discussions/Questions

DRAFT

2021 Workshop Overall Recommendations



- Implement interim changes to increase safety, and improve flow of goods and people
- Develop interim guidelines to be used between now and any permanent changes to Ballard Avenue
- Continue the conversation on permanent changes to Ballard Avenue
- Coordinate with SDOT to keep Ballard Avenue and City-wide street café work aligned

Short Term Improvements - Project Focus



- Implement interim changes to increase safety, and improve flow of goods and people
- Develop interim guidelines to be used between now and any permanent changes to Ballard Avenue
- Continue the conversation on permanent changes to Ballard Avenue
- Coordinate with SDOT to keep Ballard Avenue and City-wide street café work aligned

2021 Workshop - What we heard



What's Working

- One-way streets prioritizing loading zone and deliveries
- Less traffic
- Street life experience

What's Not

- Sidewalks feel narrow, limited right of way
- Signage & Safety - cars drive recklessly very close to pergolas

Ballard Ave Landmark District



Landmark District Values and Principles

- Maintain a pedestrian-oriented experience with emphasis at street level
- Enhance cultural, social, and economic activation
- Preserve the distinctive physical characteristics of the District's buildings and public spaces

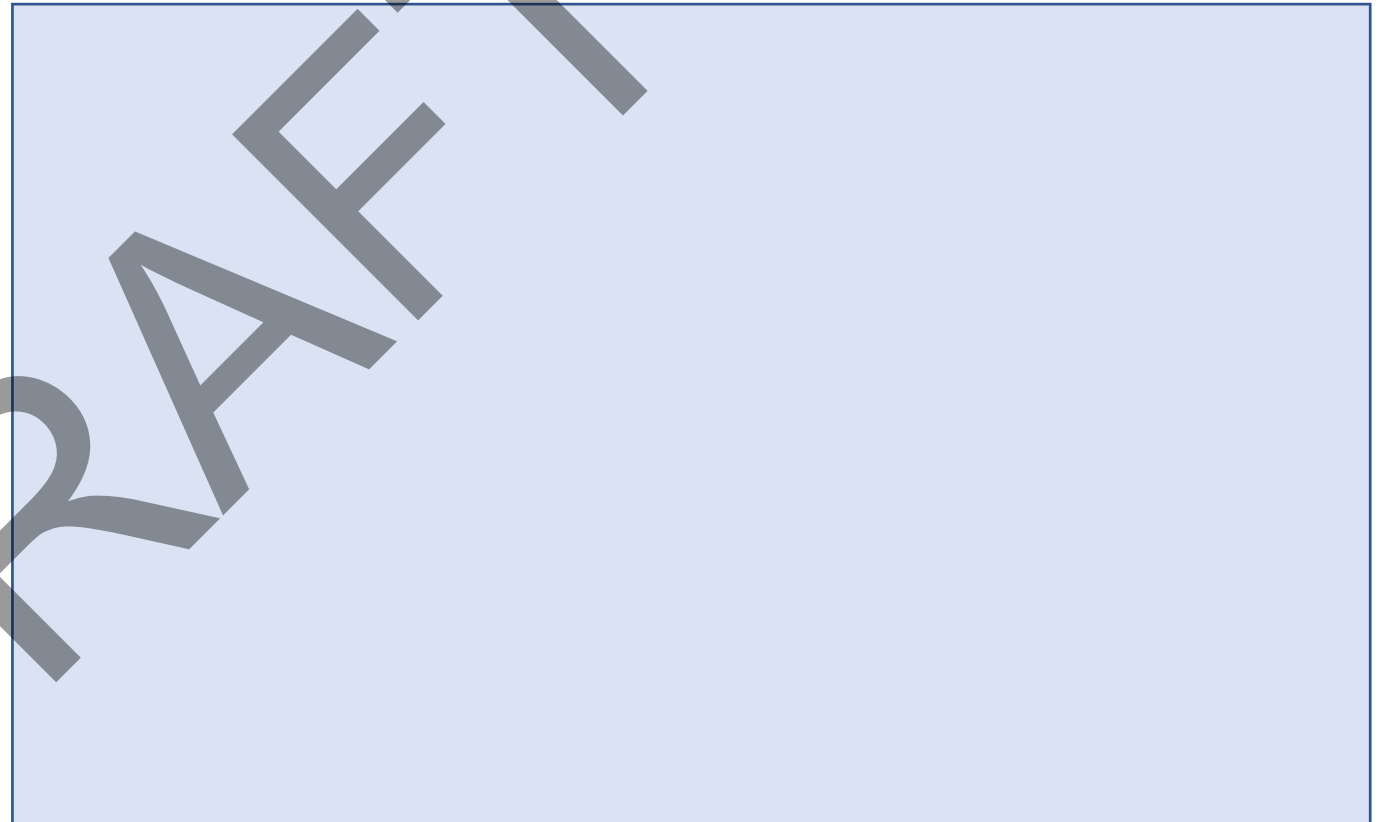
Short Term Safety Improvements Project Extents (map to be added)

20th Ave NW – 22nd Ave NW



Observations (images to be added)

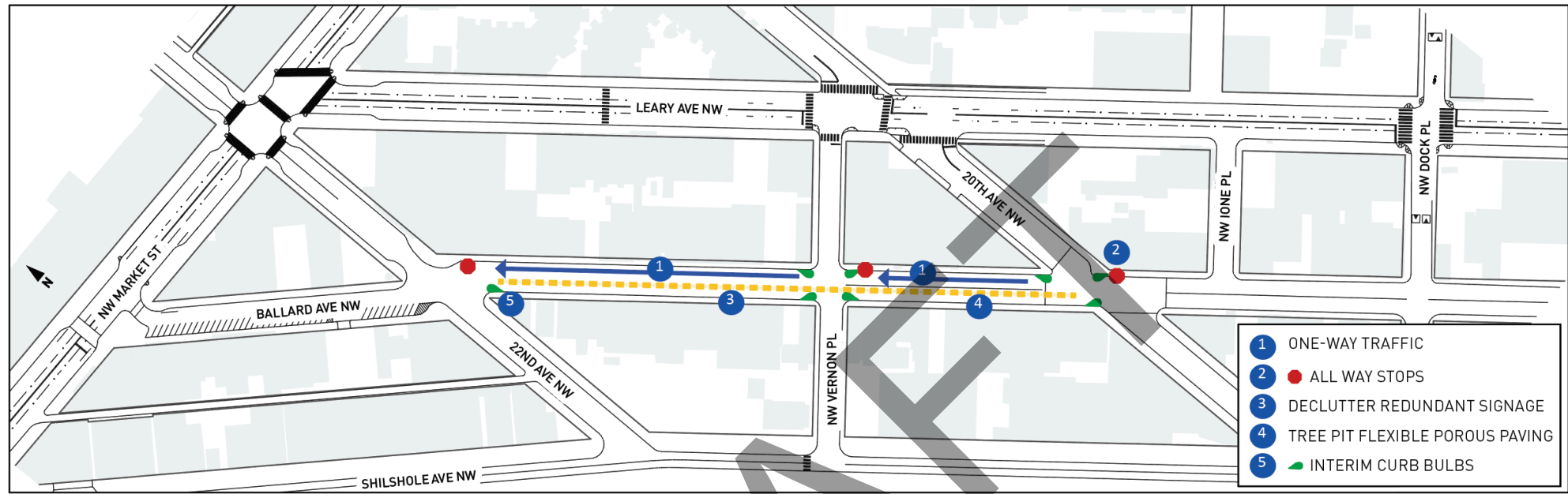
1. Speeding
2. Parking and Loading
3. Sidewalks
4. Sign clutter



Short Term Safety Recommendations

20th Ave NW – 22nd Ave NW

1. Introduce Stop Signs at 20th Ave NW, Vernon Pl, and 22nd Ave NW per map on slide 11, refresh existing signs
2. Add interim curb bulbs (paint, posts, and planters) per locations on map on slide 11; allowing for seamless Farmers Market operations
3. Organize parking and loading activities to improve operations
4. Update roadway markings to reflect one-way operations and improve legibility of loading and parking areas
5. Install flexible porous paving at tree pits to improve sidewalk environment (from Market St-20th Ave NW)
6. Declutter redundant signs



Section looking North-West



Example of paint and planter interim curb bulb

Near Term Safety Recommendations

20th Ave NW - 22nd Ave NW

Additional graphics to be added

DRAFT

Engagement

Ongoing

- Ballard Alliance
- Ballard Farmers Market
- North Seattle Industrial Association

Upcoming

- To be completed

DRAFT

Questions?

Aditi.Kambuj@seattle.gov
www.seattle.gov/transportation

www.seattle.gov/transportation

