





“Water as an asset class, in my view, will eventually become the single most important physical commodity — dwarfing oil, copper, agricultural commodities, and precious metals.”

Willem Buiter

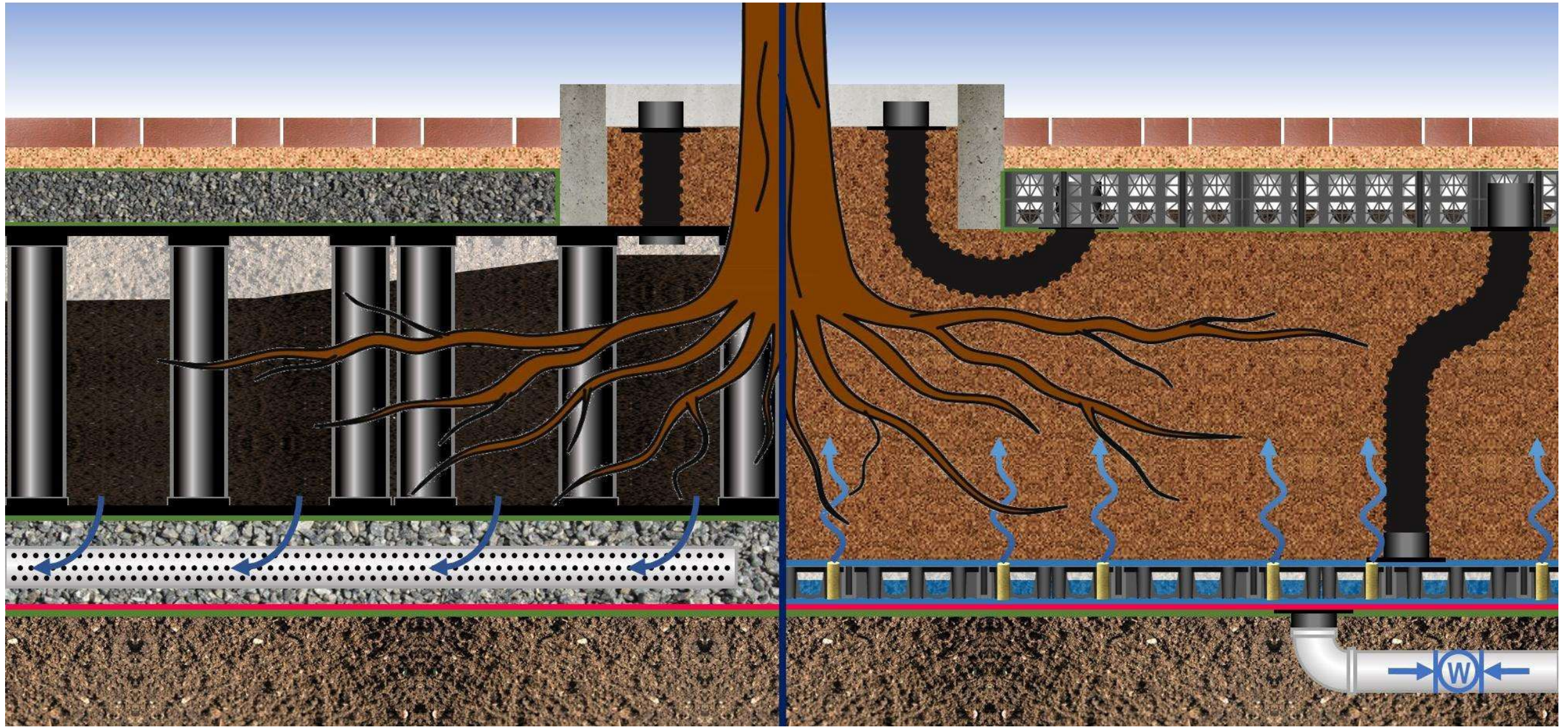
Chief Economist





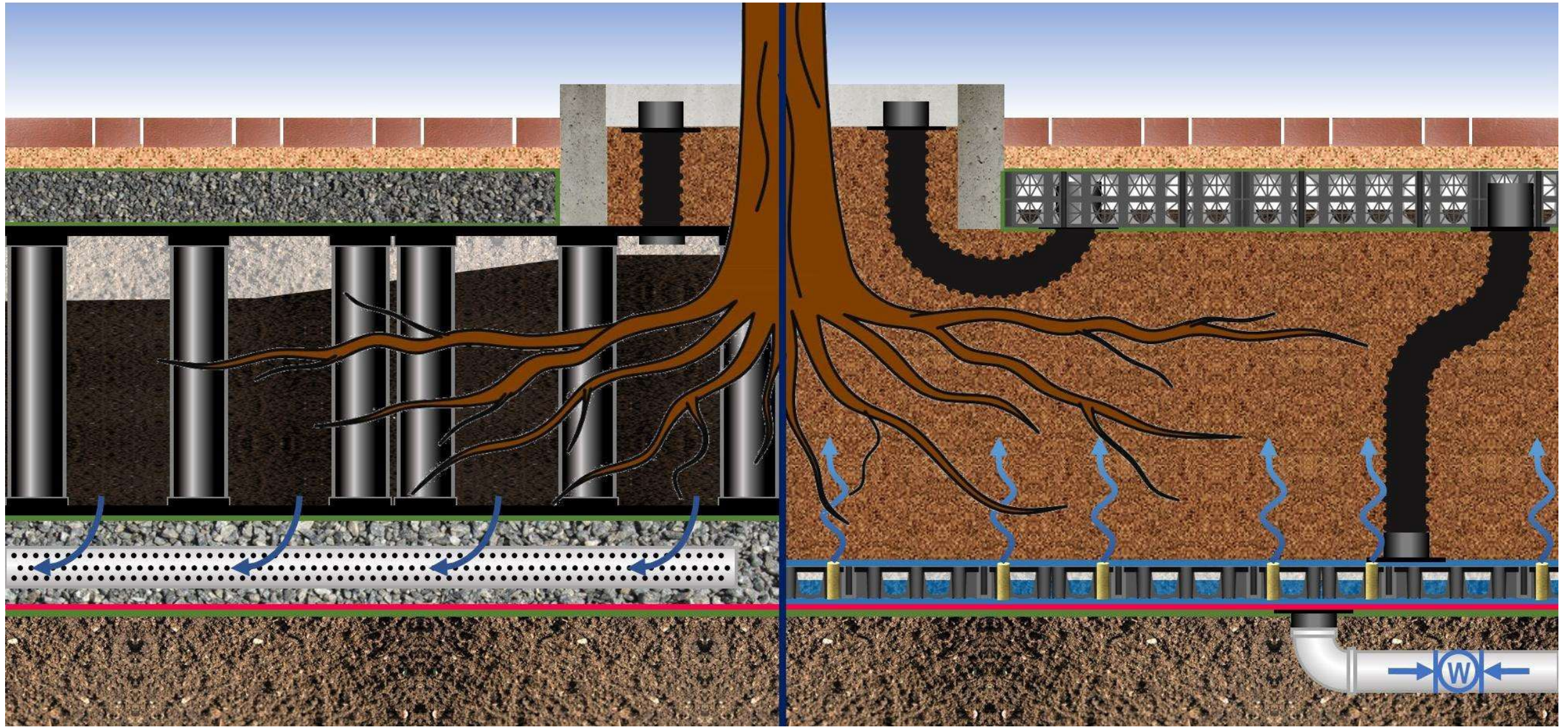










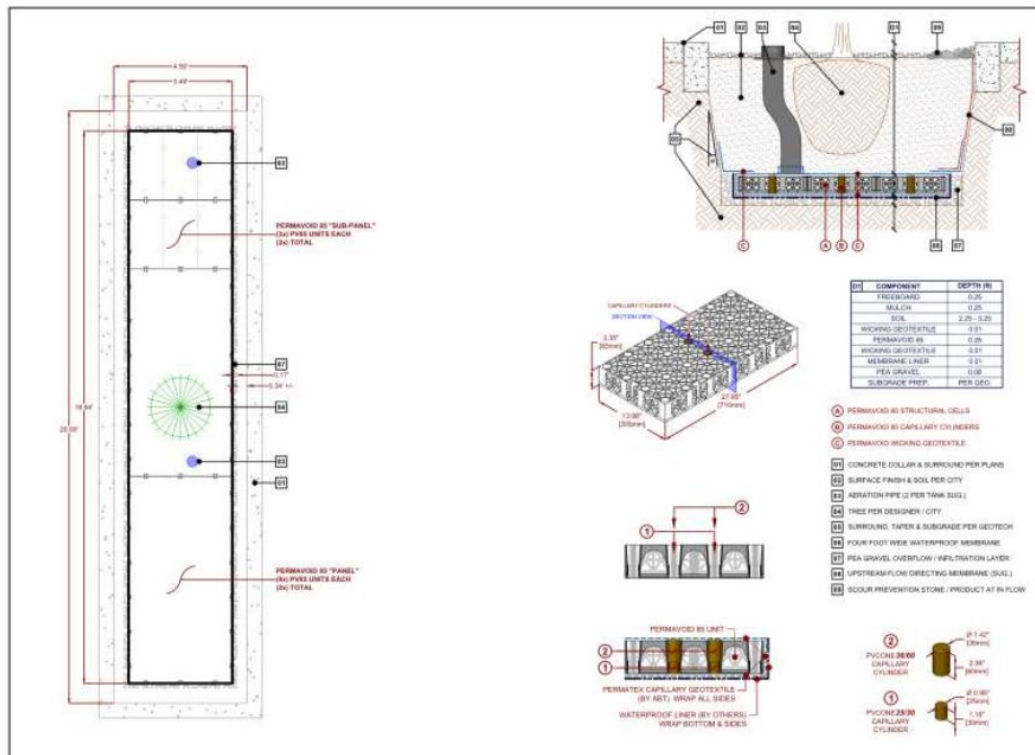




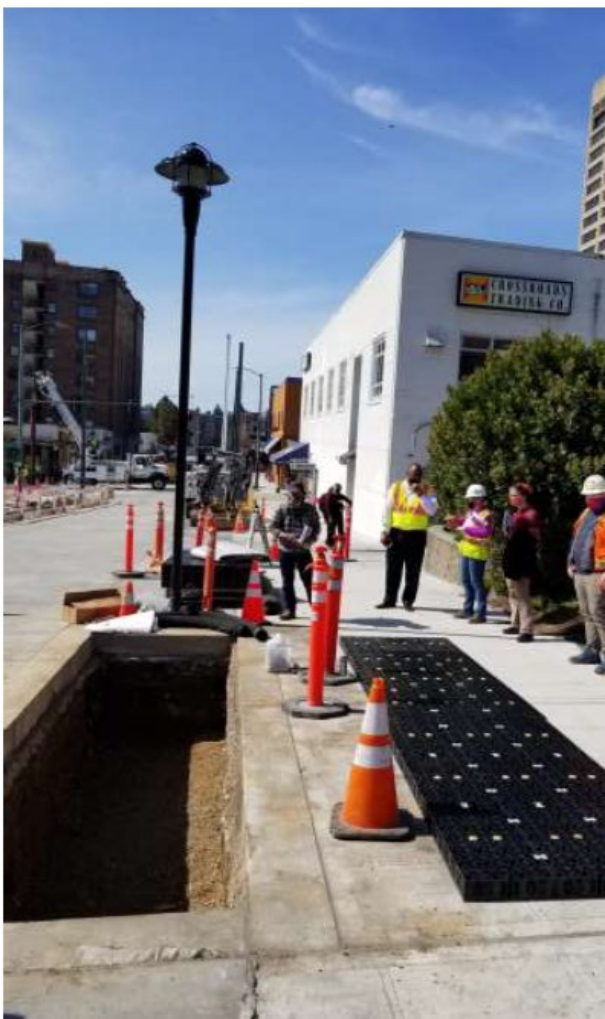
Capillary Action
Irrigation

A living “lab” for UW faculty and students in Landscape Architecture and Stormwater Engineering

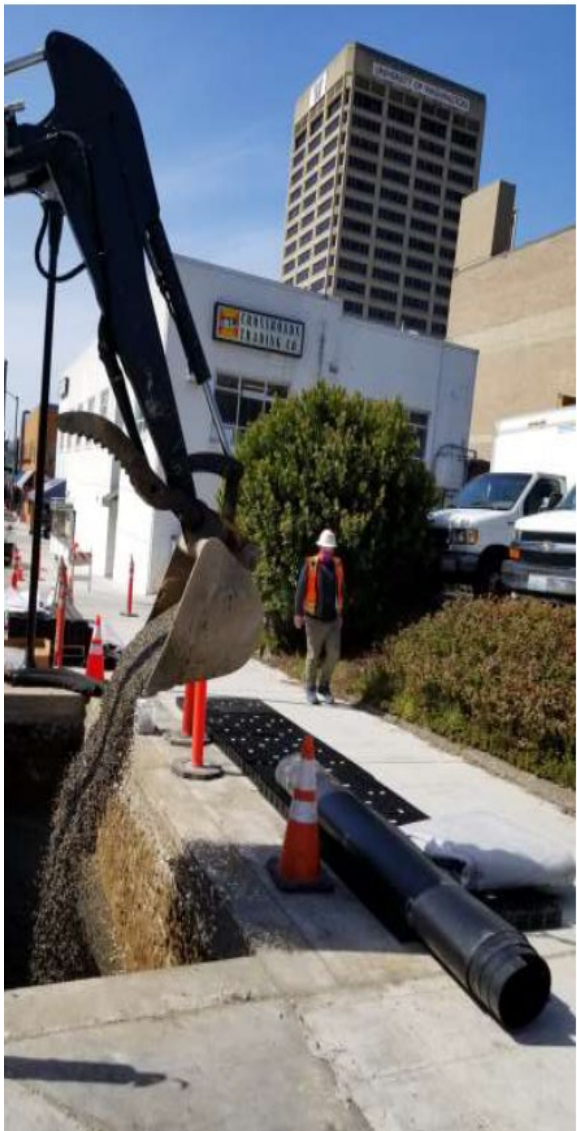
NE 43rd Tree Pit layout utilizing Permavoid with Capillary Irrigation



Layout Permavoid units and insert capillary wicking cones



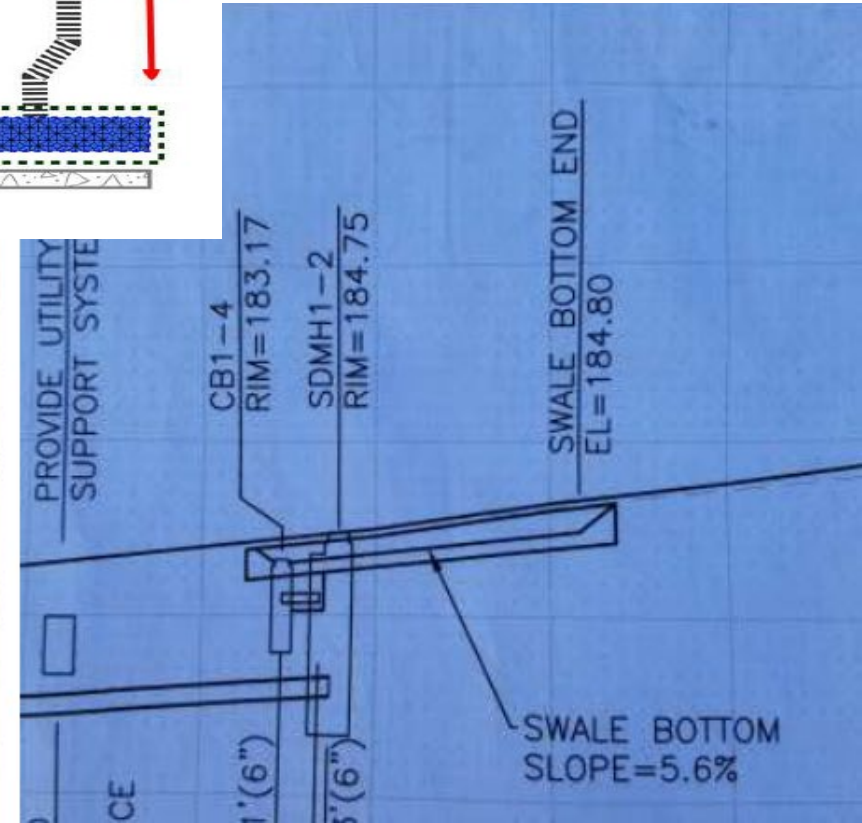
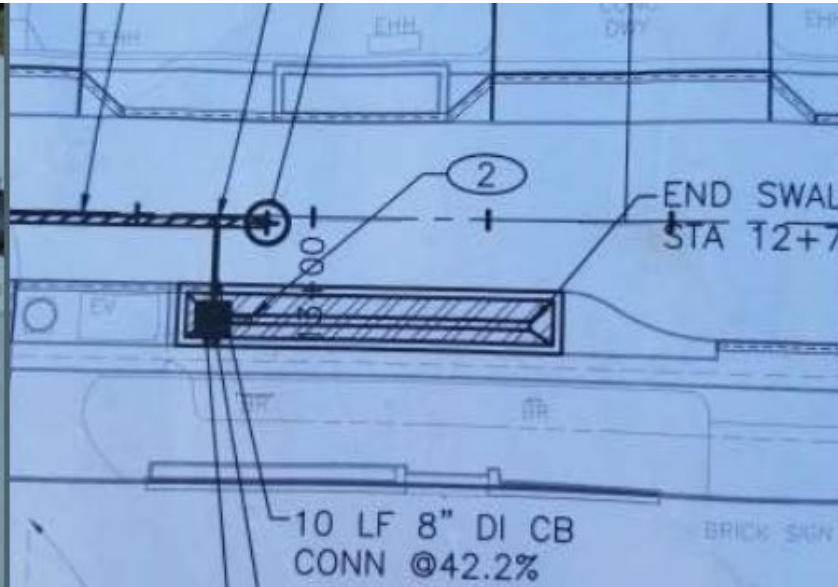
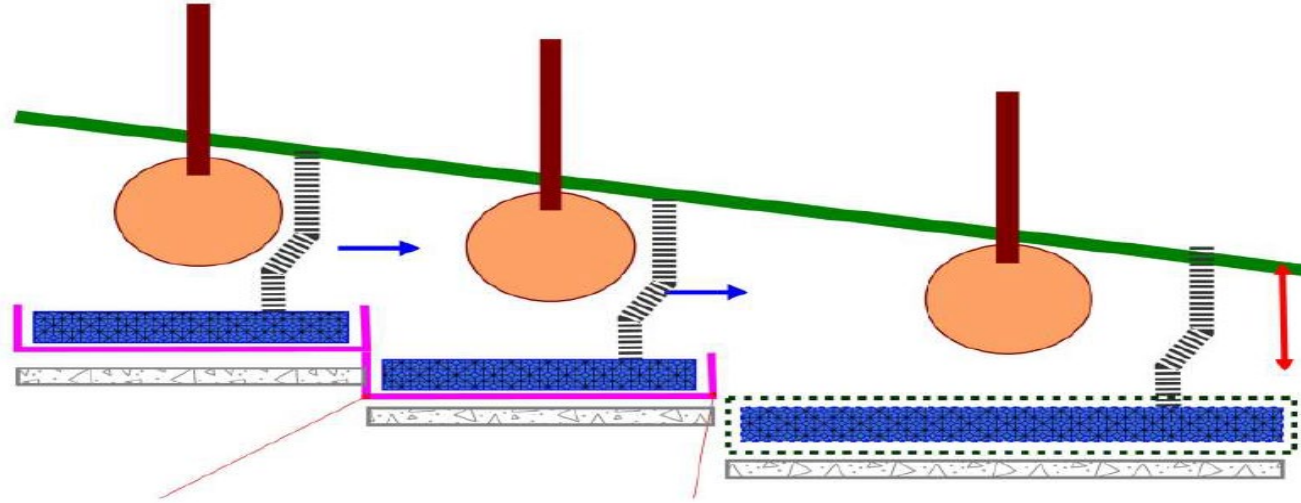
Place bedding and overflow infiltration stone layer



Completely wrap Permavoid units in wicking geotextile, attach membrane encasing bottom and sides, and attach aeration pipes.



Conveyance Swale Installation on NE 43rd (south side /opposite tree pit on the north)





End result

Tree preservation &
Installation
Options for Seattle's future...

