



# KING COUNTY 30-YEAR FOREST PLAN

Kathleen Farley Wolf, Forestry Program, King County Forestry Program  
[kfarleywolf@kingcounty.gov](mailto:kfarleywolf@kingcounty.gov)

Jessica Engel, King County Water and Land Division, 1 Million Trees  
[Jessica.Engel@kingcounty.gov](mailto:Jessica.Engel@kingcounty.gov)

Sarah Brandt, Open Space Program, King County Parks, Open Space  
[sbrandt@kingcounty.gov](mailto:sbrandt@kingcounty.gov)

Lizzy Stone, King County Forestry Program, Graduate Intern  
[elstone@kingcounty.gov](mailto:elstone@kingcounty.gov)

# BACKGROUND: 2015 STRATEGIC CLIMATE ACTION PLAN (SCAP)



## 1 Million Trees: 2015-2020

- King County and partners
- “Down payment” on the 30-Year Forest Plan

## 30-Year Forest Plan: 2020-2050

- Build on 1 Million Trees
- Develop a shared vision & outline 30-year goals related to tree canopy, forest cover, forest health
- “There are substantial carbon and climate benefits to maintaining, protecting, restoring, and expanding forests and farms in King County.”
  - Identify priorities in addition to climate benefits



# 30-YEAR FOREST PLAN OUTREACH



- Clarify priorities/goals and challenges/opportunities with partners and stakeholders
  - Internal KC-DNRP meetings and workshops
  - External meetings and workshops with partners
  - Online survey to collect public input (through 3/8): <https://publicinput.com/6101/>

# 30-YEAR FOREST PLAN OUTLINE



We expect to divide the Plan into four sections:

1. What do we have?
2. **What do we want?**
3. **How do we get there?**
  - **Collecting input: understand priorities in order to set goals and strategies**
4. How are we doing?

# 30-YEAR FOREST PLAN: "WHAT DO WE HAVE?"

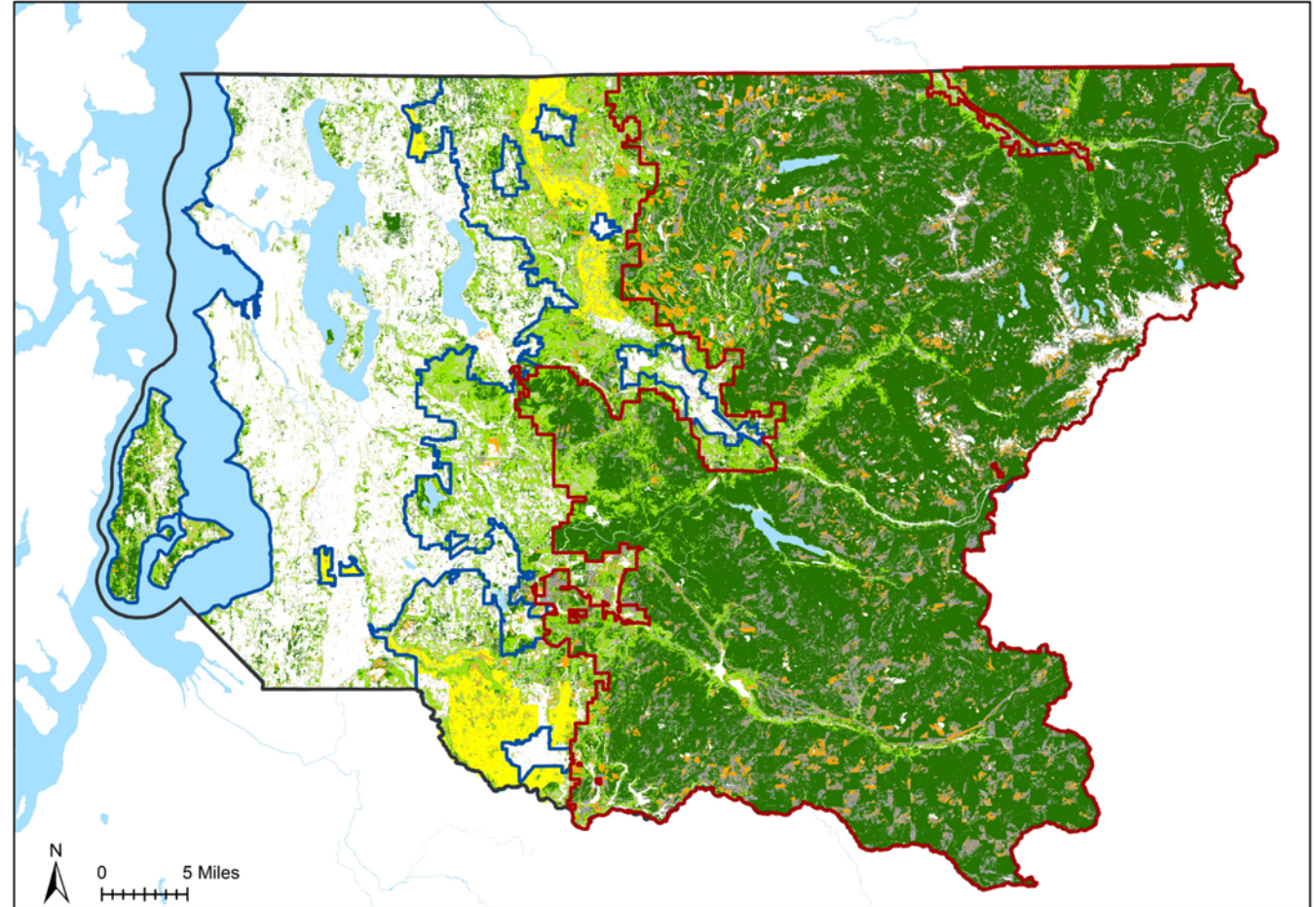
## Land Cover types:

- **Grassland:** Dominated by naturally occurring grasses and non-grasses (forbs) that are not fertilized, cut, tilled, or planted regularly.
- **Deciduous Forest:** Includes areas dominated by single stemmed woody vegetation unbranched 0.6 to 1 meter above the ground and having a height greater than 5 meters and cover more than 20% of land area. More than 75 percent of the tree species shed foliage simultaneous in response to seasonal change.
- **Evergreen Forest:** Includes areas in which more than 67 percent of the trees remain green throughout the year. Both coniferous and broad-leaved evergreens are included in this category. Trees must be taller than 5 meters and more than 20% of the land cover.
- **Mixed Forest:** Contains all forested areas in which both evergreen and deciduous trees are growing and neither predominate. Trees must be taller than 5 meters and more than 20% of the land cover.
- **Scrub/Shrub:** Areas dominated by woody vegetation less than 5 meters in height. This class includes true shrubs, young trees, and trees or shrubs that are small or stunted because of environmental conditions. Includes both evergreen and deciduous scrub.

Forest Cover and Land Area (acres)

	County	Forest Production District
Deciduous Forest	51,200	14,280
Evergreen Forest	601,928	549,578
Mixed Forest	157,935	58,292
<b>Total Forest Cover</b>	<b>811,063</b>	<b>622,150</b>
<b>Total Land Area</b>	<b>1,360,255</b>	<b>813,329</b>

## Forest Cover in King County (2016)



Land cover data:  
NOAA C- Cap FTP Tool 2016

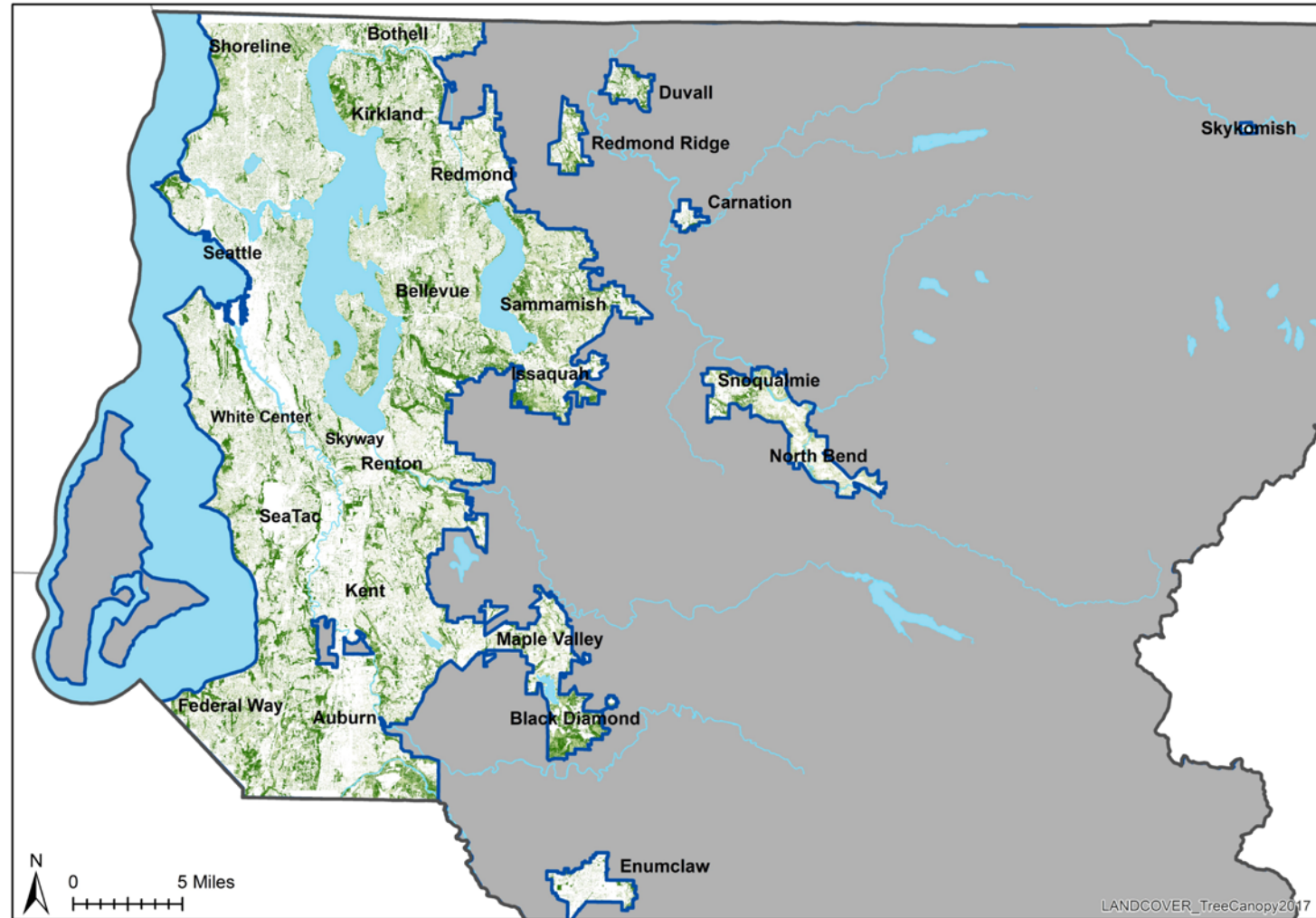
### Legend

- Urban Growth Areas (blue outline)
- Forest Production District (red outline)
- Agricultural Production District (yellow)
- Deciduous Forest (light green)
- Evergreen Forest (dark green)
- Grassland (yellow)
- Mixed Forest (medium green)
- Scrub/Shrub (grey)

Ownership of forested land: 34% federal, 13% state, 17% city and county, 4% tribal, 32% private

# 30-YEAR FOREST PLAN: “WHAT DO WE HAVE?”

## Tree Canopy in Cities and Unincorporated Urban Areas (2017)



### Legend

- Urban growth areas
- Rural areas
- Evergreen canopy
- Deciduous canopy
- Other canopy

LANDCOVER\_TreeCanopy2017

City	Tree canopy (acres)	Percent cover	Possible planting area (acres)	Year
Algona*	176	21%	284 (34%)	2017
Auburn*	5,709	32%	5,572 (31%)	2017
Beaux Arts Village	35	67%		2017
Bellevue*	7,877	37%	5,978 (28%)	2017
Black Diamond*	2,442	57%	866 (20%)	2016
Bothell*	3,926	45%	2,989 (34%)	2016
Burien <sup>1</sup>	1,941	30%	1,553 (24%)	2017
Carnation				
Clyde Hill*	198	29%	44 (6.5%)	2017
Covington*	1,130	30%	615 (16%)	2017
Des Moines*	1,190	29%	1,108 (27%)	2017
Duvall*	523	33%		2017
Enumclaw	533	16%		2017
Federal Way	5,413	37%		2017
Hunts Point	77	39%		2017
Issaquah*	3,954	51%	1,246 (16%)	2017
Kenmore*	1,587	41%	1,173 (30%)	2017
Kent*	6,125	28%	5,323 (25%)	2017
Kirkland*	4,361	38%	3,421 (30%)	2018
Lake Forest Park	953	41%		2017
Maple Valley*	1,169	31%	555 (15%)	2017
Medina	334	37%		2017
Mercer Island*	1,921	48%	1,121 (28%)	2017
Milton	511	30%		2017
Newcastle	1,328	47%	652 (23%)	2017
Normandy Park*	740	46%	456 (29%)	2017
North Bend	1096	39%		2017
Pacific	183	16%		2017
Redmond <sup>2</sup>	4,062	38%		2017
Renton*	4,382	29%	3,030 (20%)	2017
Sammamish <sup>3</sup>	6,970	44%		2018
SeaTac*	1,425	22%	971 (15%)	2017
Seattle <sup>4</sup>	15,167	28%		2016
Shoreline	2,112	28%		2017
Skykomish	No data			2017
Snoqualmie <sup>5</sup>	1,769	44%	706 (17,4%)	2015
Tukwila*	1,390	24%	1,146 (19%)	2017
Woodinville*	1,622	45%	397 (11%)	2017
Yarrow Point	80	35%		

Assessment by King Conservation District

Areas calculated from 2017 tree canopy GIS layer (percentages are calculated excluding water area)

### Tree canopy in King County's unincorporated urban areas<sup>1</sup>

Unincorporated Area	Tree canopy (acres)	Percent coverage
Fairwood	1624	41%
Maplewood	772	46%
Redmond Ridge	1102	45%
Skyway	511	28%
Star Lake	863	38%
White Center	477	21%

\* Areas calculated from 2017 tree canopy GIS layer (percentages are calculated excluding water area)

### Tree canopy goals can focus on specific objectives...

“...such as reaching the canopy percentage necessary to reduce urban heat island temperatures to a specific range, or to reduce stormwater runoff by a projected amount...” (American Forests)

# 30-YEAR FOREST PLAN: “WHAT DO WE WANT?”

**Priorities => outcomes** associated with forest/tree cover and **strategies** to meet those outcomes

## Strategies

- Site-specific examples: e.g. tree planting, restoration projects, changes in forest management, or other actions
- Regional examples: e.g. improve exchange of best practices and information, improve seedling availability

Priorities	Outcomes	Strategies
Example: Forest health in KC Parks	Example: Shift in composition & structure in KC-owned forests	Example: Restoration projects that harvest alder and replant conifers
Example: Human health	Example: Improved air quality	Example: Increase tree planting in low canopy areas; increase urban greenspace acquisition
Example: Reducing climate impacts	Example: More carbon stored in KC forests	Example: Lengthen rotations of existing forests; increase planting across the County



# 30-YEAR FOREST PLAN: NEXT STEPS



- Compile and understand input received
- Draft set of top priorities for review in March
- Outline goals, strategies, measures
- Draft plan for review by December

*Please feel free to contact us with input or questions*

- [kfarleywolf@kingcounty.gov](mailto:kfarleywolf@kingcounty.gov)
- [Jessica.Engel@kingcounty.gov](mailto:Jessica.Engel@kingcounty.gov)
- [sbrandt@kingcounty.gov](mailto:sbrandt@kingcounty.gov)
- [elstone@kingcounty.gov](mailto:elstone@kingcounty.gov)