

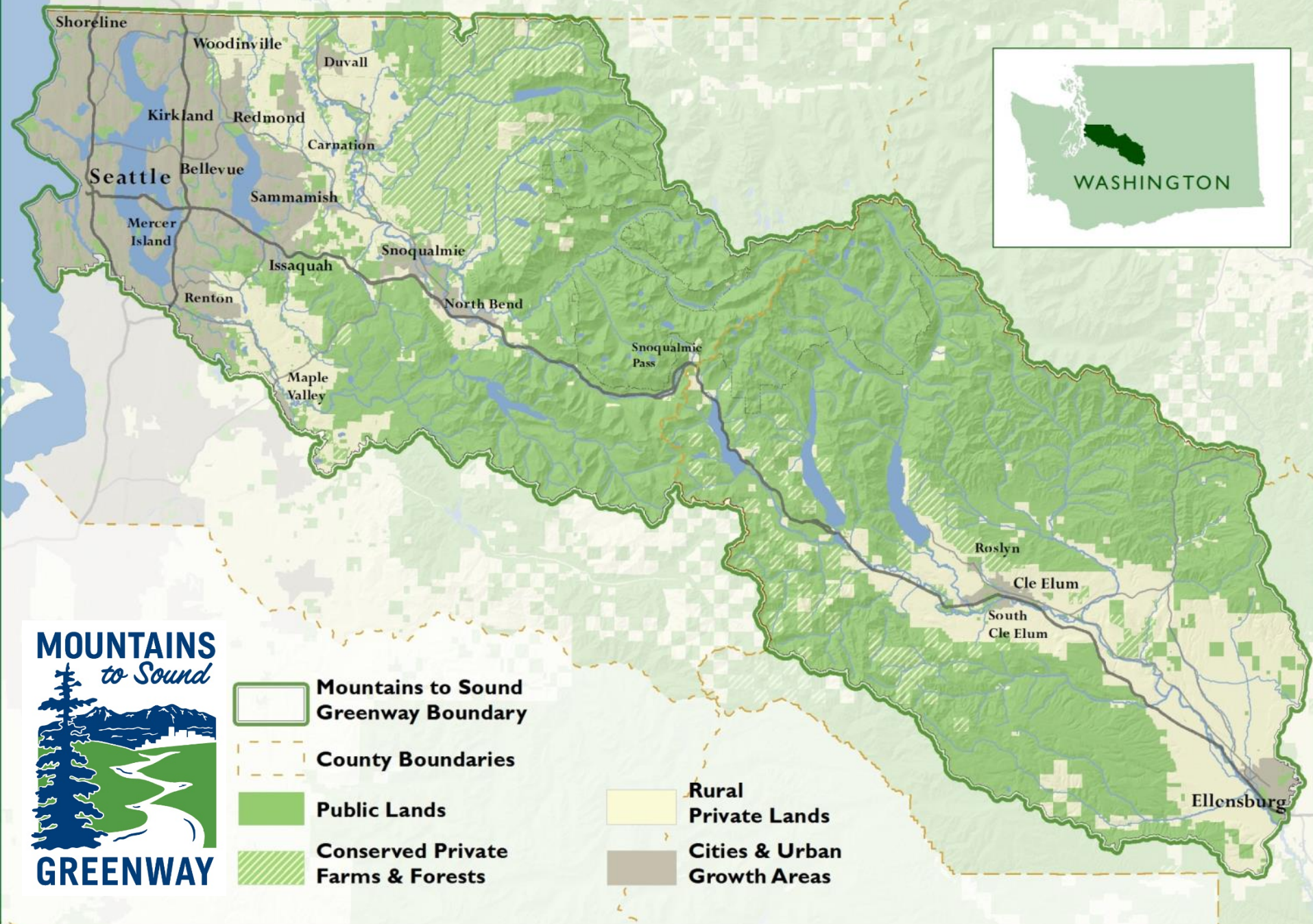


[mtsgreenway.org](http://mtsgreenway.org)

Mountains to Sound  
Greenway Trust  
Founded 1991



# MOUNTAINS TO SOUND GREENWAY





Landscape



Connections



People

# The Greenway Coalition

## Government

US Forest Service  
Kittitas County  
King County  
28 Cities  
State DNR  
State Parks  
State DOT  
Snoqualmie Tribe  
Yakama Tribe  
US/WA Fish & Wildlife

## Conservation & Recreation

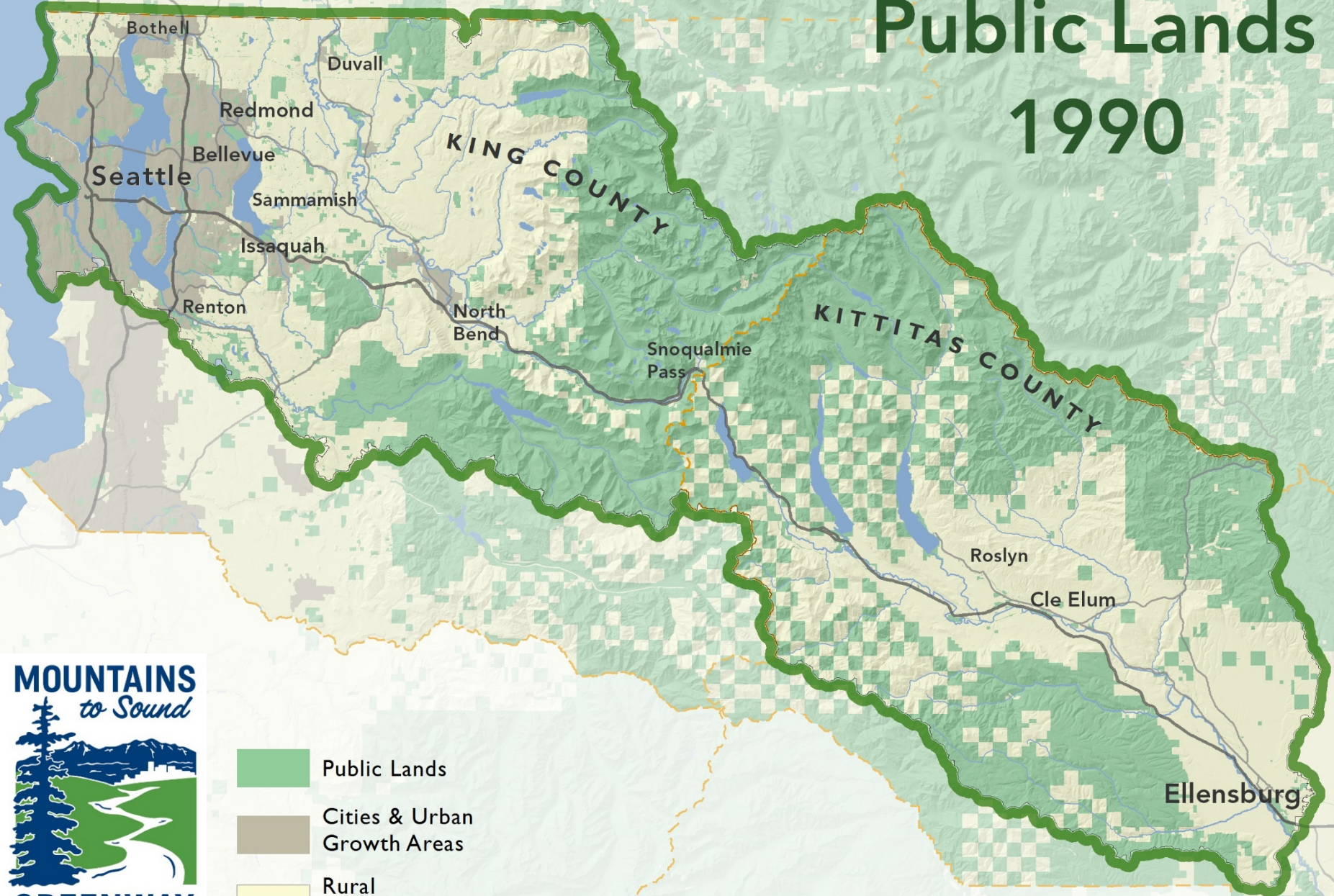
Washington Trails Association  
Backcountry Horsemen  
Sierra Club  
Trust for Public Land  
Forterra  
Upper Kittitas County Parks and  
Recreation District  
The Mountaineers  
The Wilderness Society  
Cascade Bicycle Club




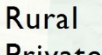
## Business

Boeing  
REI  
Puget Sound Energy  
Weyerhaeuser  
Microsoft  
HomeStreet Bank  
Carter Subaru  
CH2M  
Quadrant Homes  
AAA

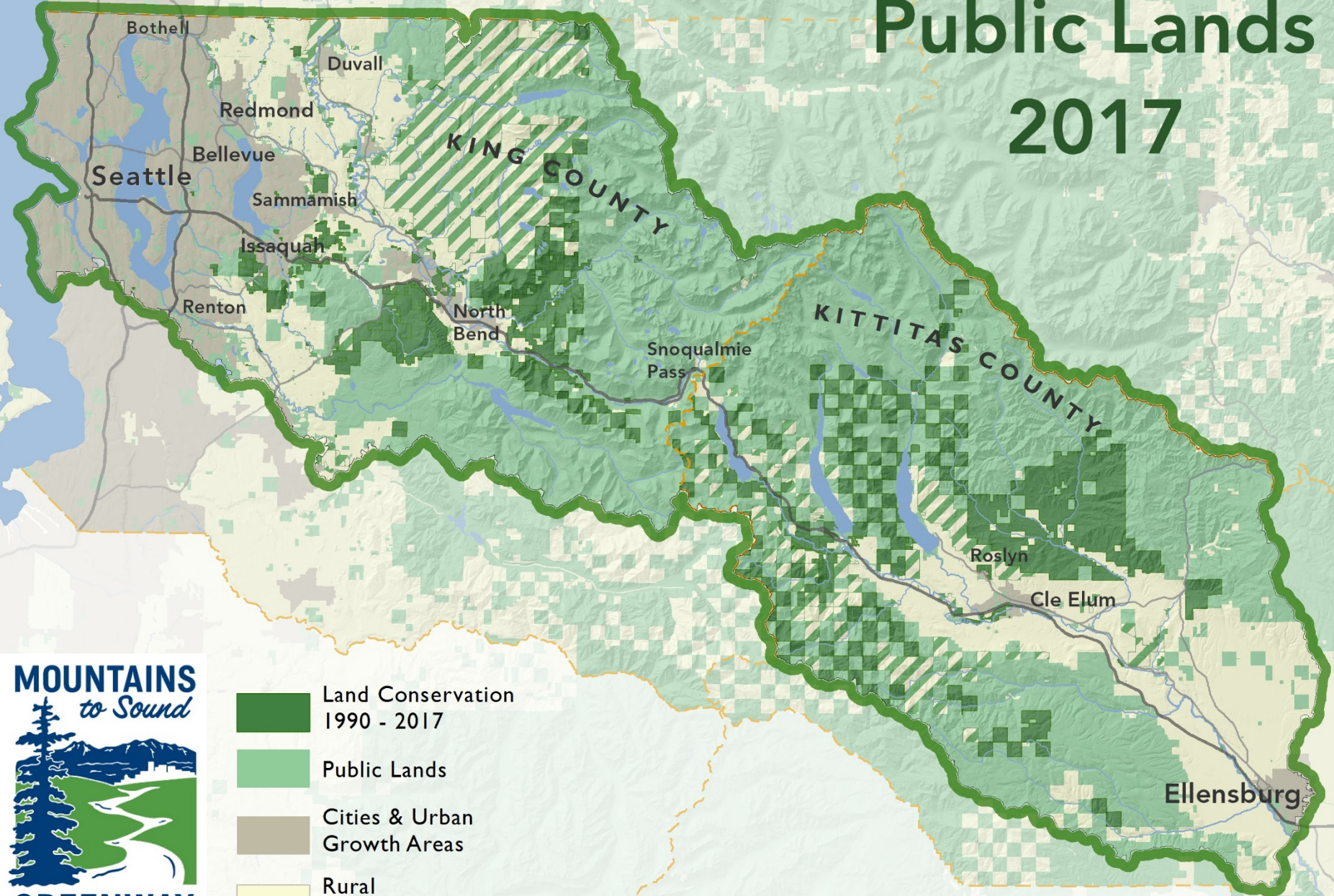


# Public Lands 1990



-  Public Lands
-  Cities & Urban Growth Areas
-  Rural
-  Private Lands

# Public Lands 2017



-  Land Conservation 1990 - 2017
-  Public Lands
-  Cities & Urban Growth Areas
-  Rural
-  Private Lands

# Volunteers, ecological restoration, trail work



[mtsgreenway.org/volunteer](https://mtsgreenway.org/volunteer)



# Youth Education



[mtsgreenway.org/education](https://mtsgreenway.org/education)

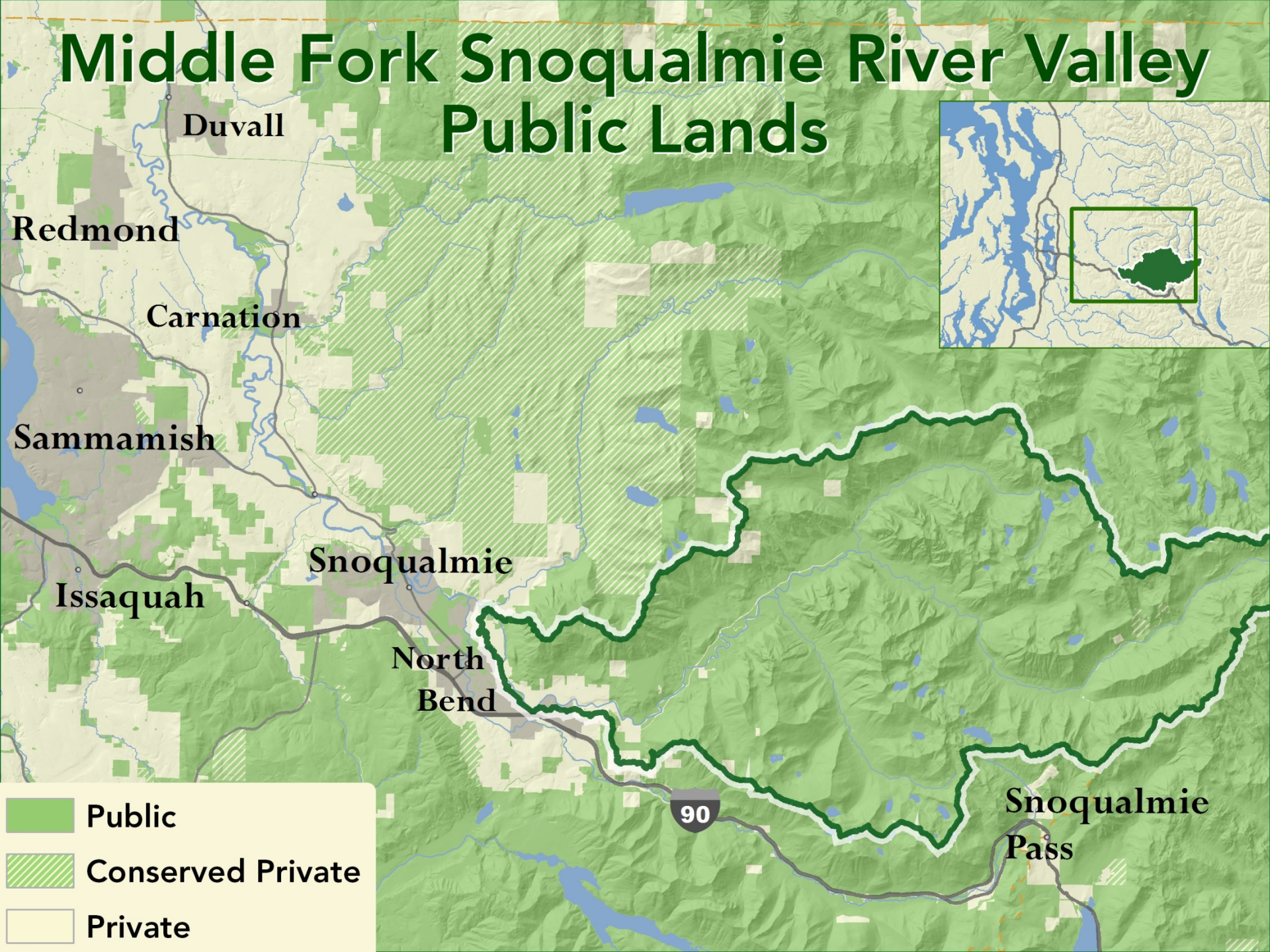
# PRIORITY INITIATIVES



# Middle Fork Snoqualmie River



# Middle Fork Snoqualmie River Valley Public Lands



Duvall

Redmond

Carnation

Sammamish

Issaquah

Snoqualmie

North  
Bend

90

Snoqualmie  
Pass

Public

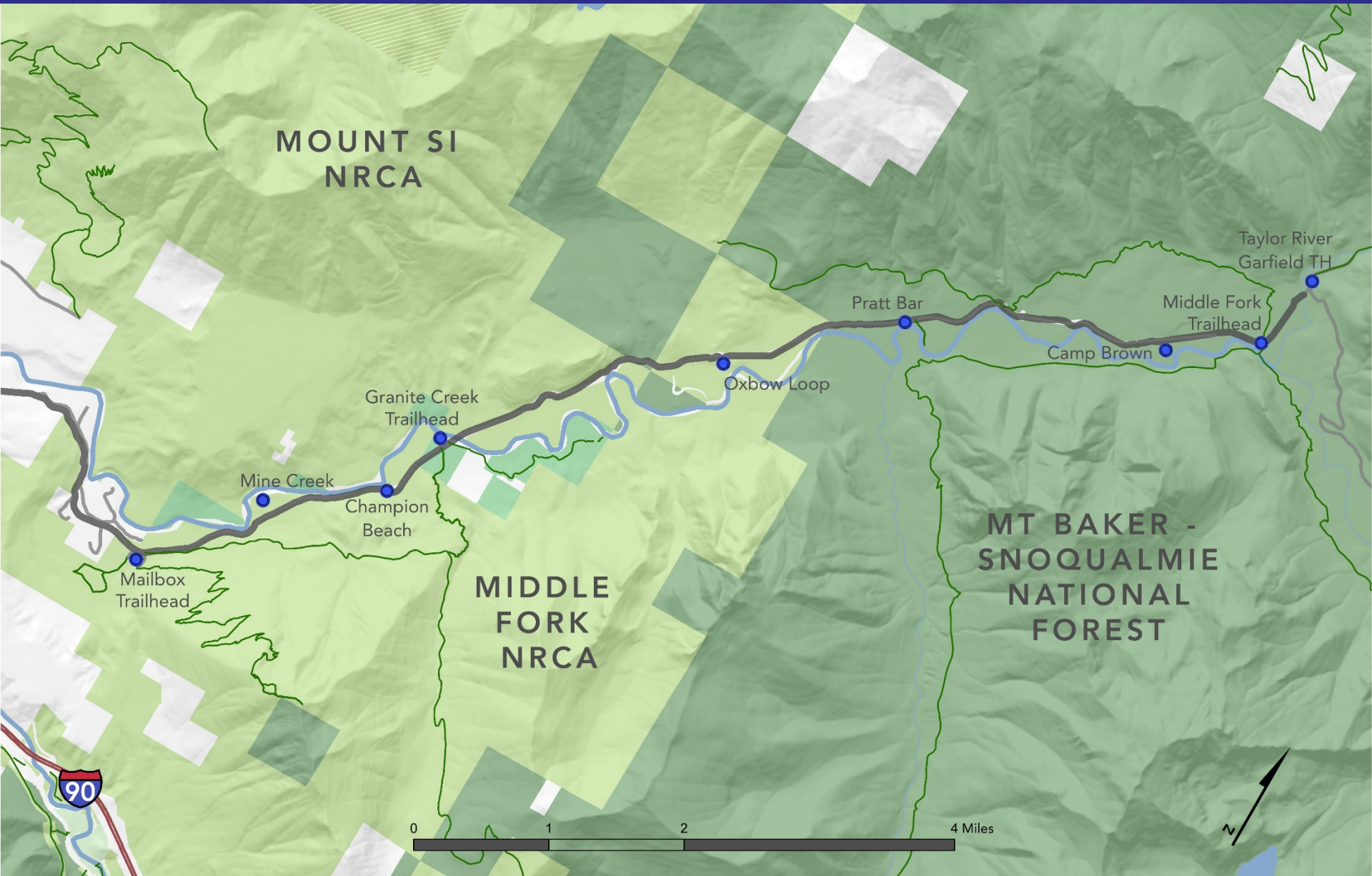
Conserved Private

Private









**MOUNT SI  
NRCA**

**MIDDLE  
FORK  
NRCA**

**MT BAKER -  
SNOQUALMIE  
NATIONAL  
FOREST**

Mailbox  
Trailhead

Mine  
Creek

Champion  
Beach

Granite  
Creek  
Trailhead

Oxbow  
Loop

Pratt  
Bar

Camp  
Brown

Middle  
Fork  
Trailhead

Taylor  
River  
Garfield  
TH

**90**


0 1 2 4 Miles







[mtsgreenway.org  
/bettermiddlefork](https://mtsgreenway.org/bettermiddlefork)



**Go outside and enjoy the Greenway**

**[mtsgreenway.org](http://mtsgreenway.org)**