

DISTRICT APPROACH TO MANAGING URBAN STORMWATER

SEATTLE
2030
DISTRICT



A COMMUNITY OF LEADERS



64

Developers + Owners +
Managers

55

Professional
Stakeholders

19

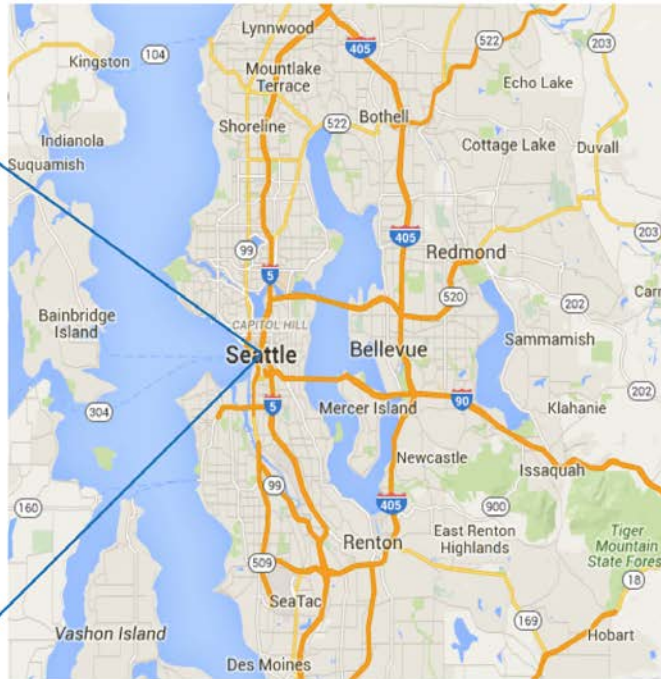
Community Stakeholders

10

Strategic Partners



Performance Impact



SEATTLE 2030 DISTRICT PERFORMANCE INSIGHTS

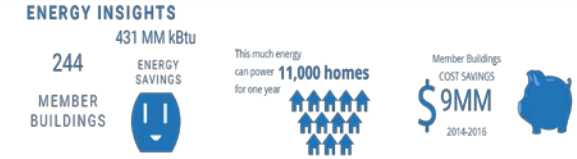
PERFORMANCE METRICS - MEMBER BUILDINGS PROGRESS

As compared to baseline data

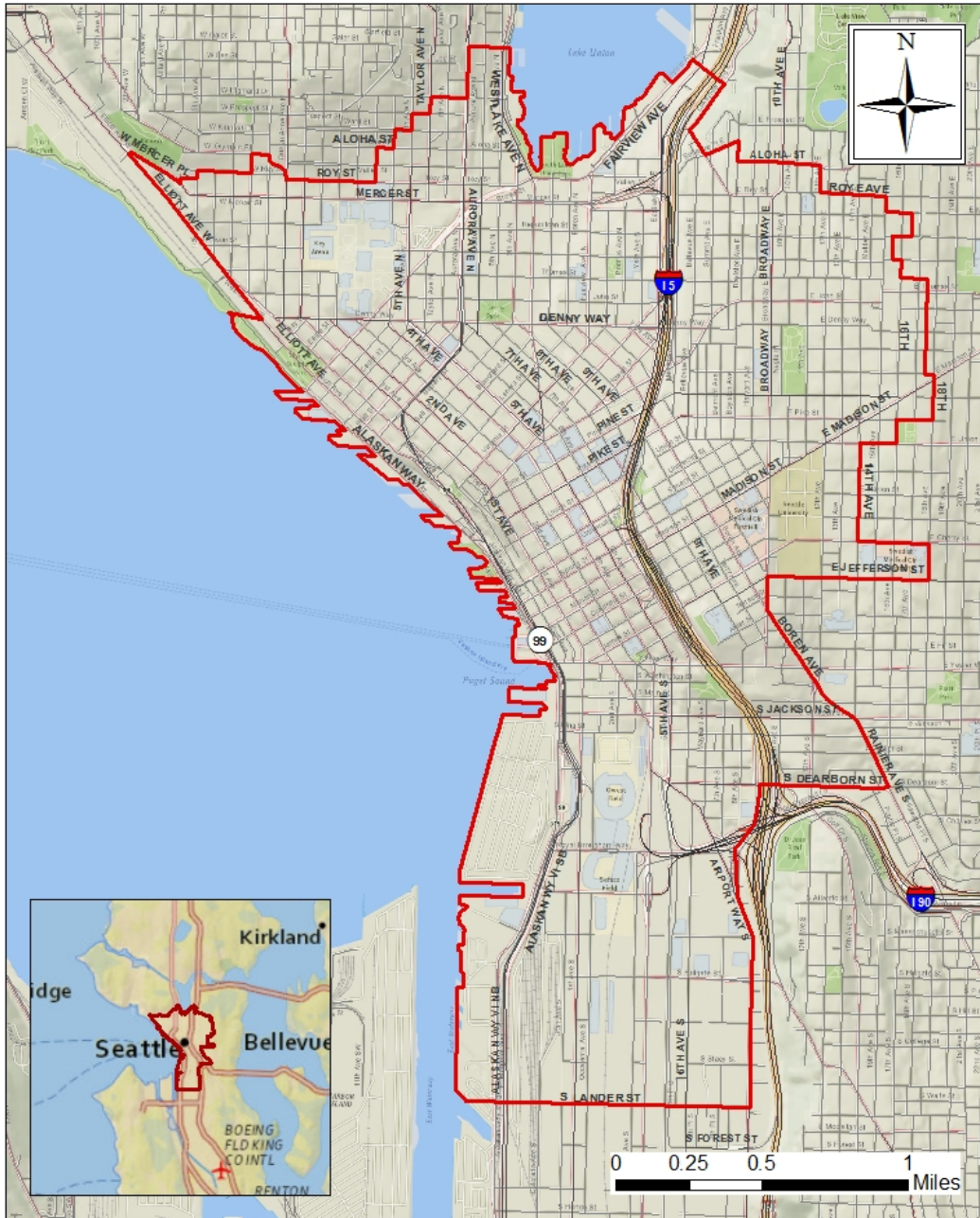


PERFORMANCE METRICS - SEATTLE 2030 DISTRICT PROGRESS

As compared to baseline data



2030 Seattle District Boundary



STORMWATER DISTRICT BASELINE



- ✓ Based on long term modeling of precipitation in Seattle and how much runoff from District
- ✓ 50% is about 228 million gallons



GREENER BELLTOWN = BLUER SOUND



Main Themes from charrette:

- ❖ Keep stormwater on-site
- ❖ Reuse water in buildings
- ❖ Incorporate water into streetscape and parks
- ❖ Potential “green corridor” through Belltown



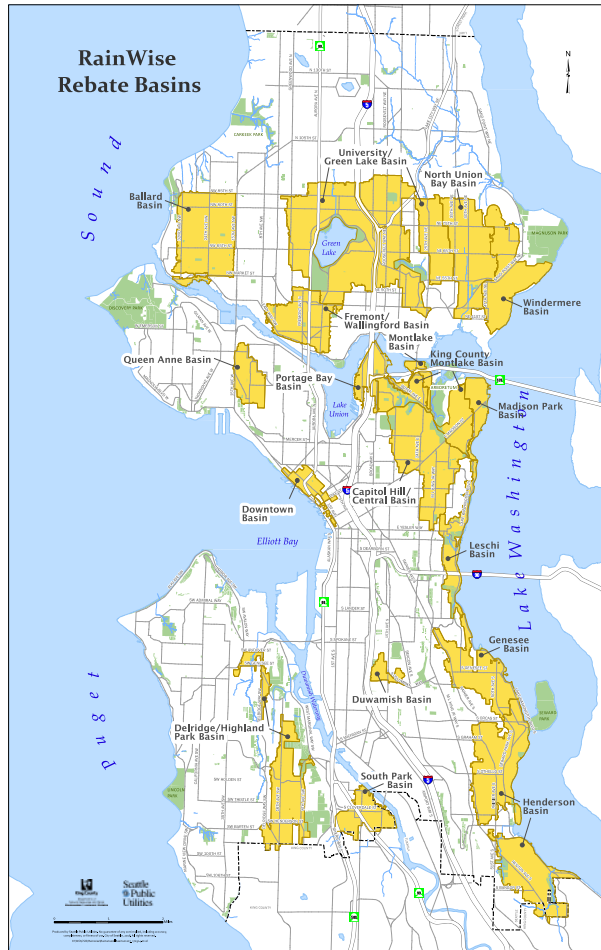
WHY HERE? WHY NOW?

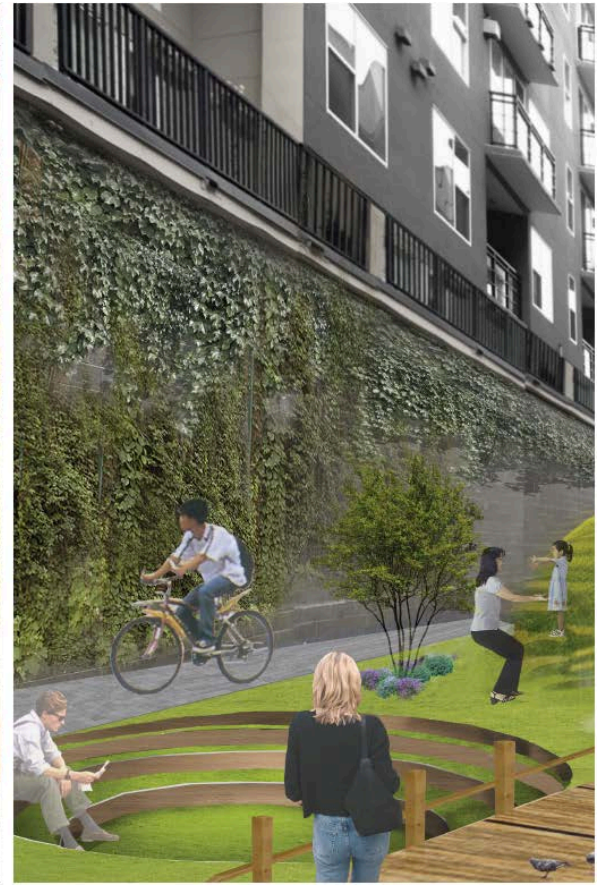
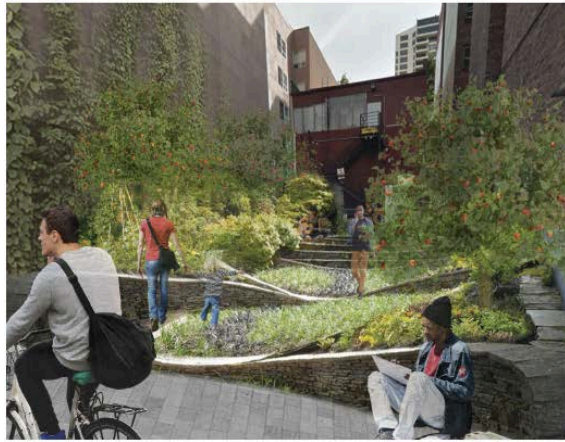
UPCOMING PROJECTS/PROGRAMS COMMUNITY ENERGY AND ACTION

- Waterfront Redevelopment
- SPU Capital Project on Vine Street CSO
- Downtown RainWise Basin
- Battery Street tunnel decommissioning
- City Habitats coalition
- Seattle 2030 District GSI Initiative

- Increased growth
- Growing Vine Street
- Project Belltown
- Market to MOHAI
- Lake to Bay

OPPORTUNITY







STORMWATER
RELATED
MURAL

EXISTING SITE
CONDITION

PLANTED
STREET
BUFFER

PLANTED
COTTAGE
BUFFER

STORMWATER
PLAZA/SKATE
BOWL

P-PATCH
EXTENSION

TERRACED
WETLAND

Street/Right-of-Way Collaboration

- Bioretention – at “Opportunity Sites”, Post Alley
- Incorporate into street planning (Street Trees/ Planters)
- Stormwater Treatment Park – utilizing public space for stormwater
- SPU, SDOT, WTD and others already committing resources



Private-Public-Partnership



- Empower the private industry to be part of the solution
- Long-term planning for responsible development
- Pool resources to manage more stormwater
- Add BMP strategies to dense urban neighborhoods.



Obstacles and Opportunities

❖ Awareness

❖ Time

❖ Bottom-line

❖ Silos



For more information, contact:

Steven Fry

Green Stormwater Program Manager

Seattle 2030 District

stevenfry@2030districts.org

425-213-3906