

SEATTLE AUDUBON

FOR BIRDS AND NATURE

CELEBRATING 100 YEARS



Restoration in Context

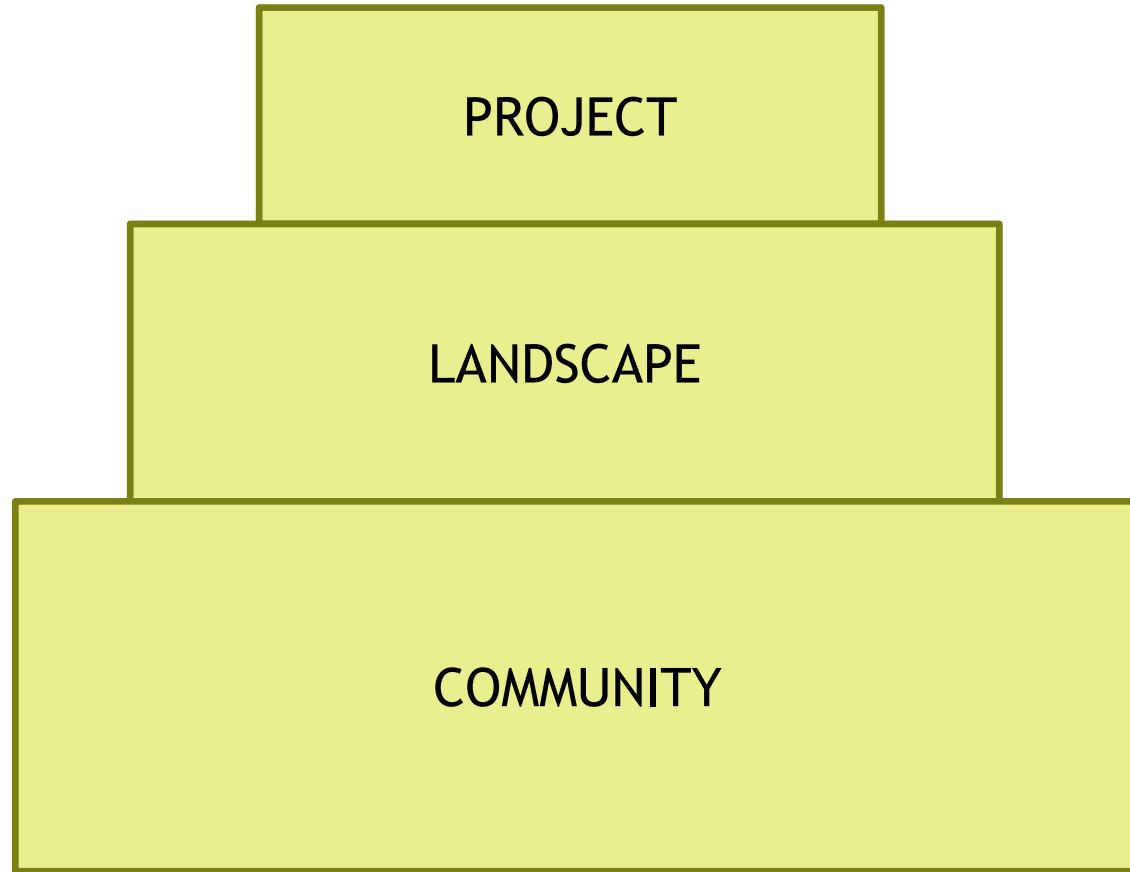
TACTICS

PROJECT

STRATEGY

LANDSCAPE

COMMUNITY



Seattle Audubon

leads a local community in appreciating, understanding, and protecting birds and their habitats



Education



Science



Conservation

Seattle Audubon 20/20: Sharpening our focus

- ▶ **Appreciate - Education:** Enhanced early childhood, modernized curricula, and equity and inclusion
- ▶ **Understand - Science:** Mobilizing our data, expanded partnerships, oil spill response, and citizen science improvements
- ▶ **Protect - Conservation:** Legacy, bird friendly policy and advocacy, coalition building, and Neighborhood Flyways
- ▶ **Organizational Sustainability - Volunteer Program, Nature Shop, Membership, Finance & Operation, and Facilities**
- ▶ **A new model for partnership**



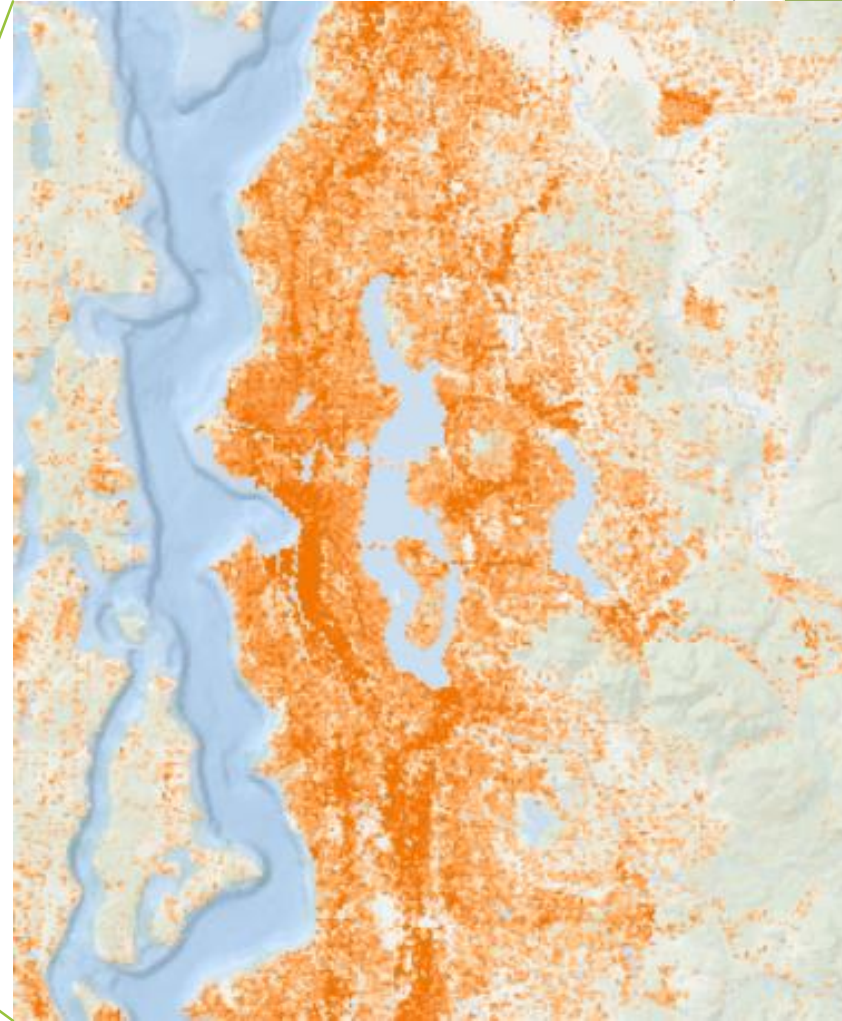
Urban Conservation: Neighborhood Flyways

- ▶ Baseline Data: Seattle Tree Map & Neighborhood Bird Project
- ▶ Policy and Advocacy: Urban Bird Treaty City, Bird Friendly Communities
- ▶ Resources for Private and Public Landowners: Backyard Habitats
- ▶ Restoration: Neighborhood Flyways Initiative

= Unbroken migratory pathways across a major urban area



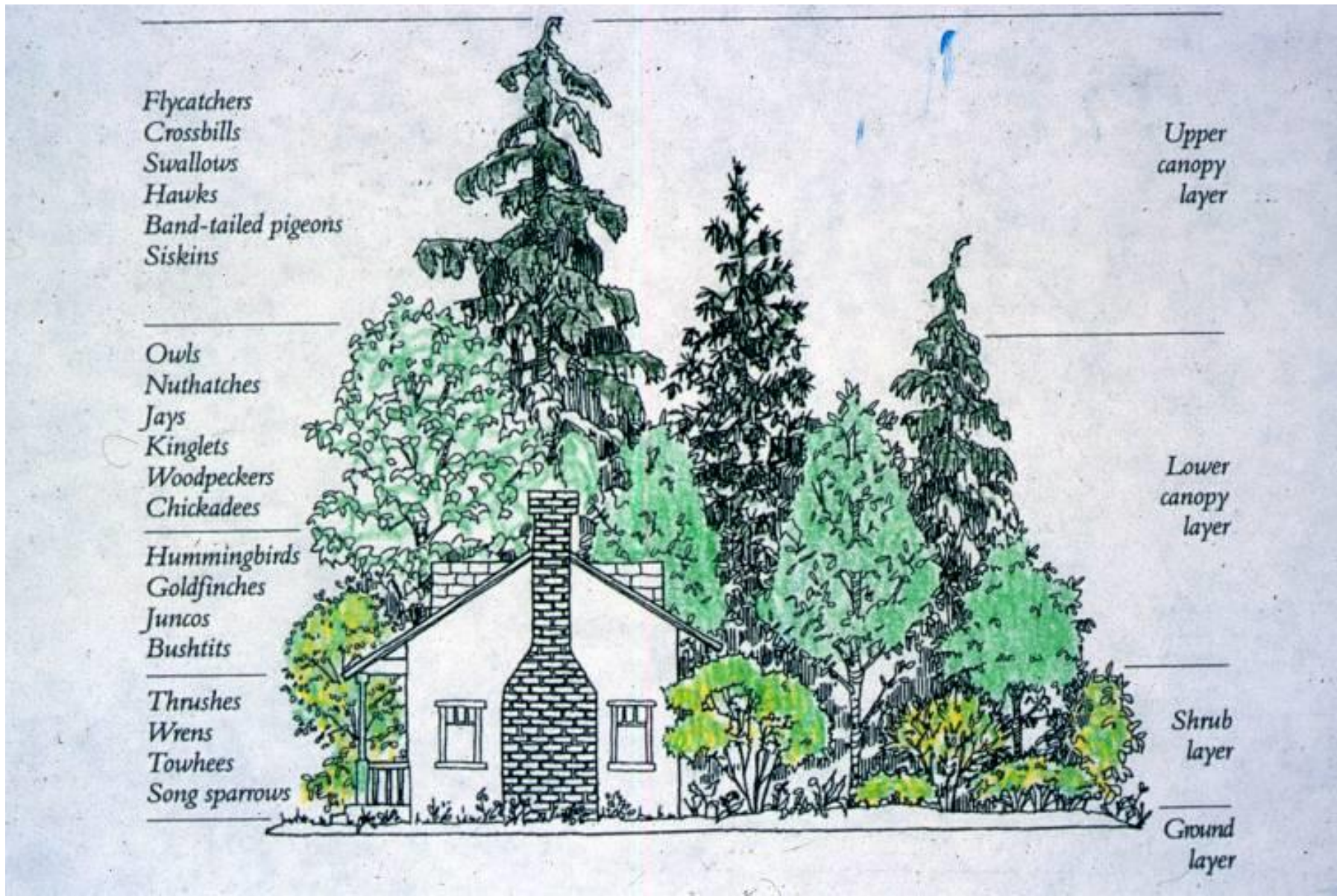
“Compensating” for impervious surface





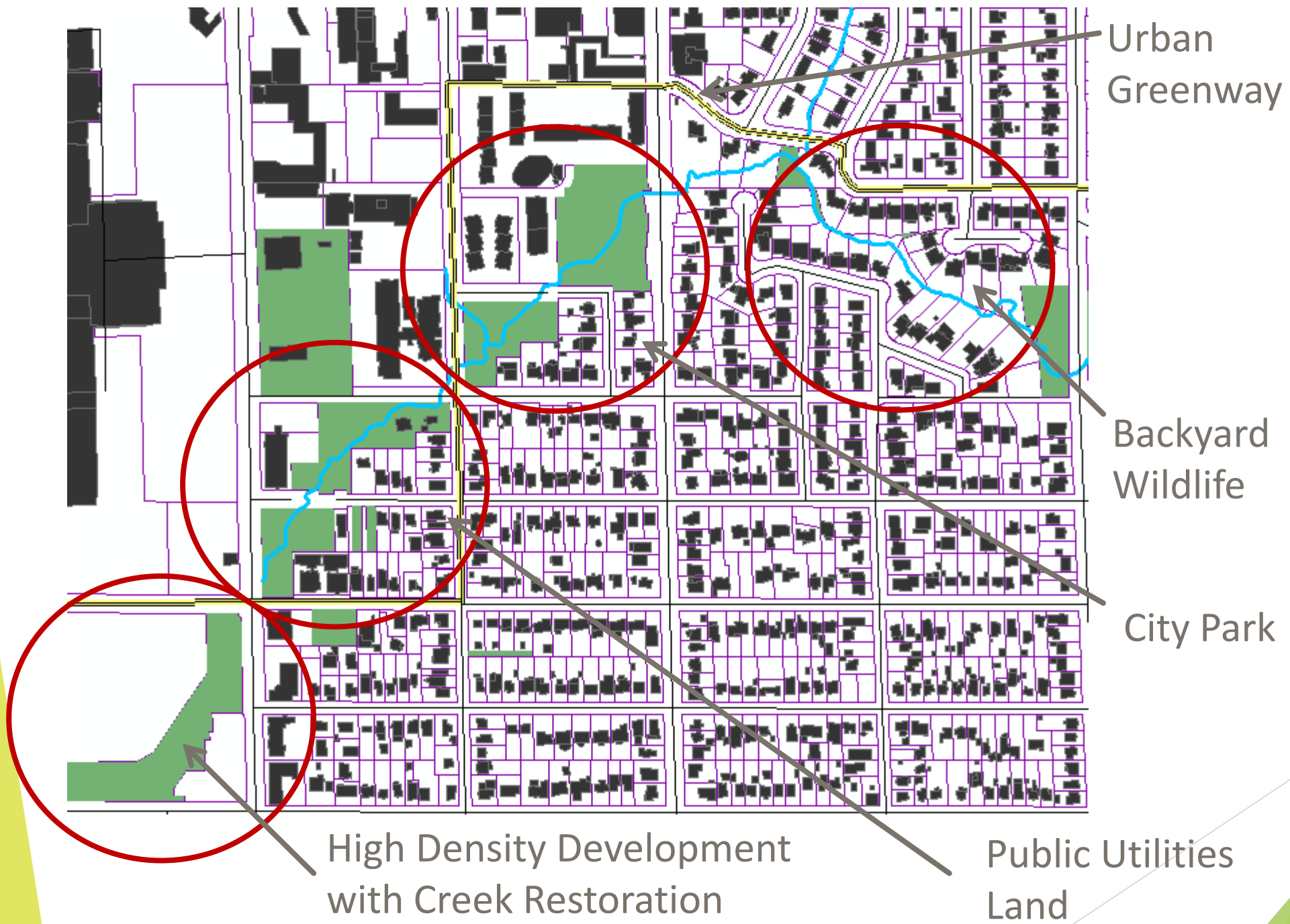
Tree Canopy Restoration - It All Adds Up To Multiple Benefits

The Individual Backyard



The Collective Backyard





Urban Greenway

Backyard Wildlife

City Park

High Density Development with Creek Restoration

Public Utilities Land

Neighborhood Flyways: Multiple Perspectives, Multiple Benefits

*URBAN FORESTRY
PROGRAMS - Public
and private*

*STORMWATER, GREEN
INFRASTRUCTURE*

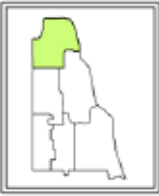
*COMMUNITY &
PARTNERS - An
engaged constituency*

**NEIGHBORHOOD
FLYWAYS:
BIRD HABITAT**

*CITY POLICIES -
DENSITY VS. OPEN
SPACE*

*ENVIRONMENTAL
JUSTICE & EQUITY*

*CLIMATE CHANGE
AND CARBON
SEQUESTRATION*

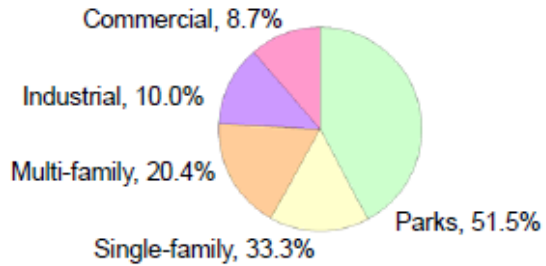


North Delridge Neighborhood: 2009 Tree Canopy

North Delridge	Neighborhood Acres (net)	Tree Acres	Percent Canopy	Canopy Goal
Parks	298.7	153.7	51.5%	25.0%
Single-Family	187.0	62.3	33.3%	31.0%
Multi-Family	84.5	17.2	20.4%	20.0%
Industrial	84.8	8.5	10.0%	20.0%
Commercial	17.2	1.5	8.7%	15.0%
TOTAL	672.2	243.2	36.2%	30.0%

Tree canopy over roadway pavement 2.3 ac or 5.0%
 Tree canopy in ROW 23.1 ac or 29.4%
 Pervious surface in ROW 23.6 ac or 30.0%
 Impervious surface in ROW 31.9 ac or 40.5%

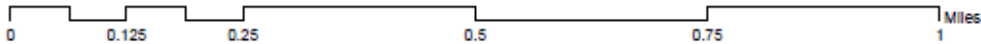
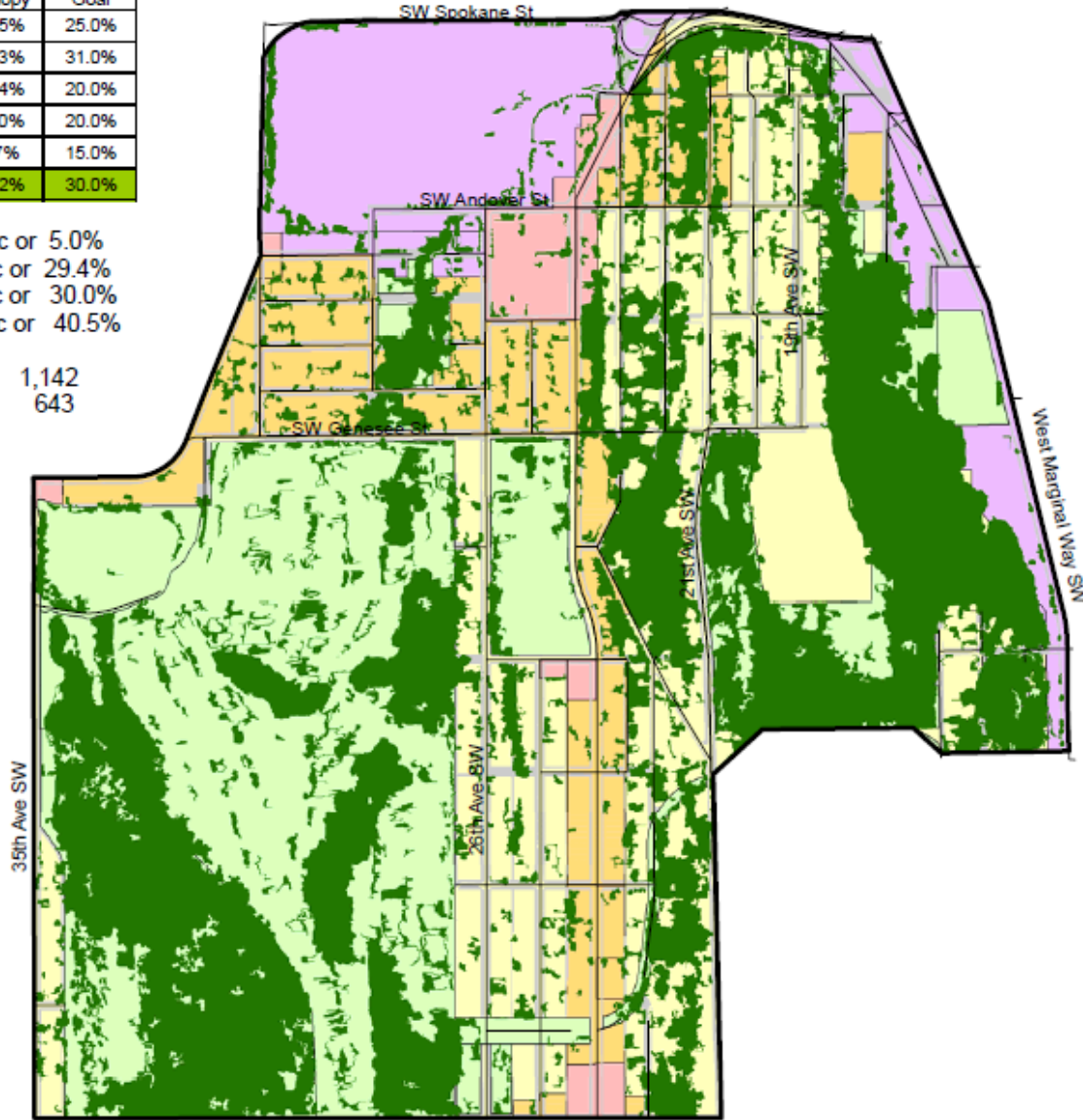
Potential Medium Tree Planting in ROW = 1,142
 Potential Large Tree Planting in ROW = 643



Data: City of Seattle & Seattle Audubon



November 18, 2011



Search for species

All

Neighborhood

in University District

Hello, mattm! | Logout Add a tree

Search Seattle

Show advanced filters >

3,094 trees selected | Add a tree!

Export options: KML CSV Shapefile

Yearly Eco Impact

Selected trees in University District

\$ Total Benefits

\$26,719.89 saved

Greenhouse Gas Benefits

168,057.21 lbs CO2 reduced

\$5,846.56 saved

Water Benefits

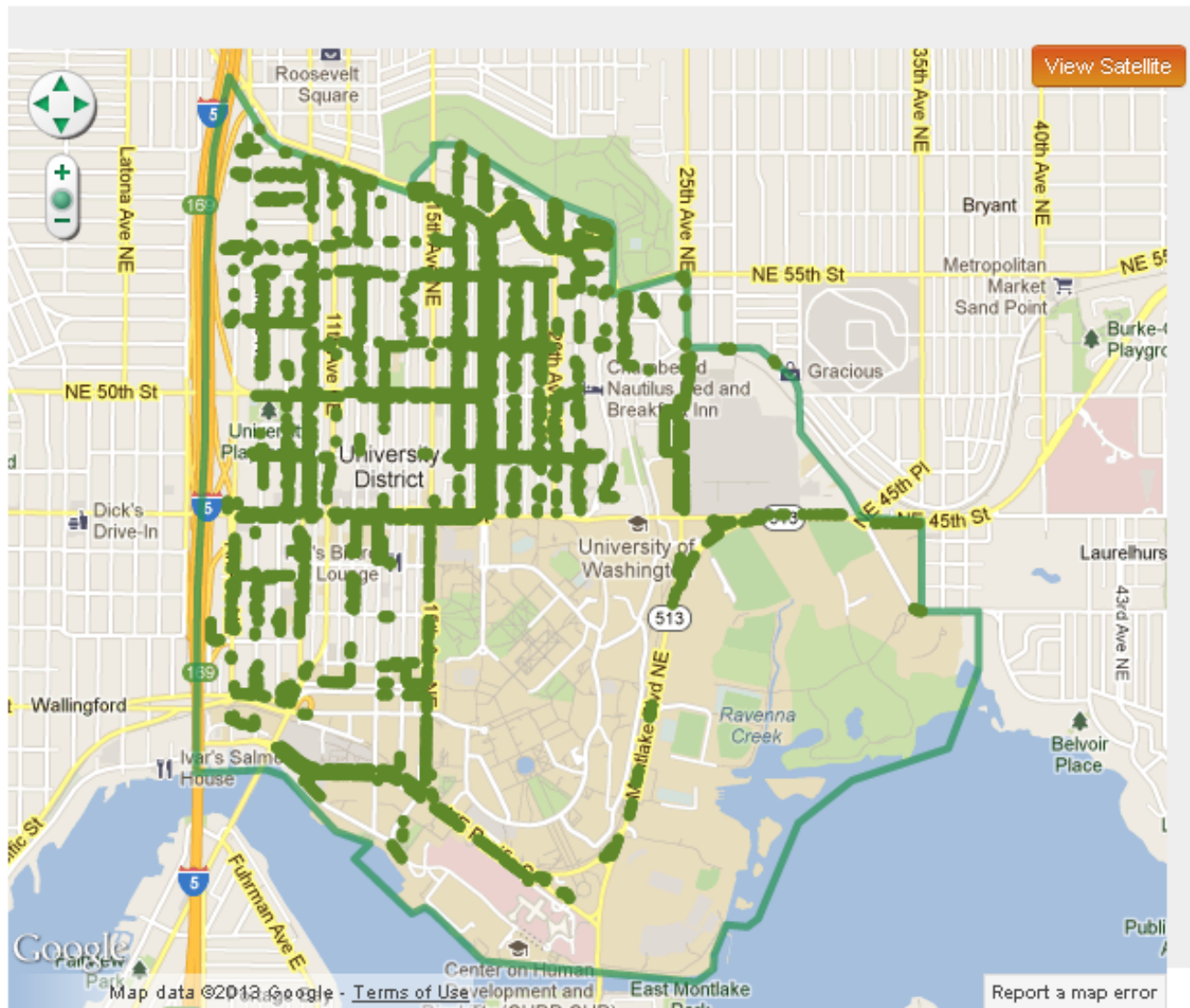
1,919,783.40 gallons conserved

\$19,197.83 saved

Energy Benefits

83,420.54 kWh conserved

\$1,647.91 saved





Plants For Birds

Let's grow one million bird-friendly plants together.

Ruby-throated Hummingbird at a butterflyweed. Photo: Dave Maslowski



Native Plants
Why Native Plants Are Better
for Birds and People

Bird-friendly landscaping provides food, saves water, and fights climate change.

Photo: [Click here](#)

