

Green Seattle Partnership

# 20-Year Strategic Plan Update

December 13, 2017



**Seattle**  
Parks & Recreation

healthy people healthy environment strong communities

# Goals for The 10 (Plus) Year Update

1. Reflect on where we are today
2. Celebrate our accomplishments
3. Identify how to reach the original goal by 2025
4. Plan for the future beyond 2025



**BEFORE**



**DURING**



**AFTER**

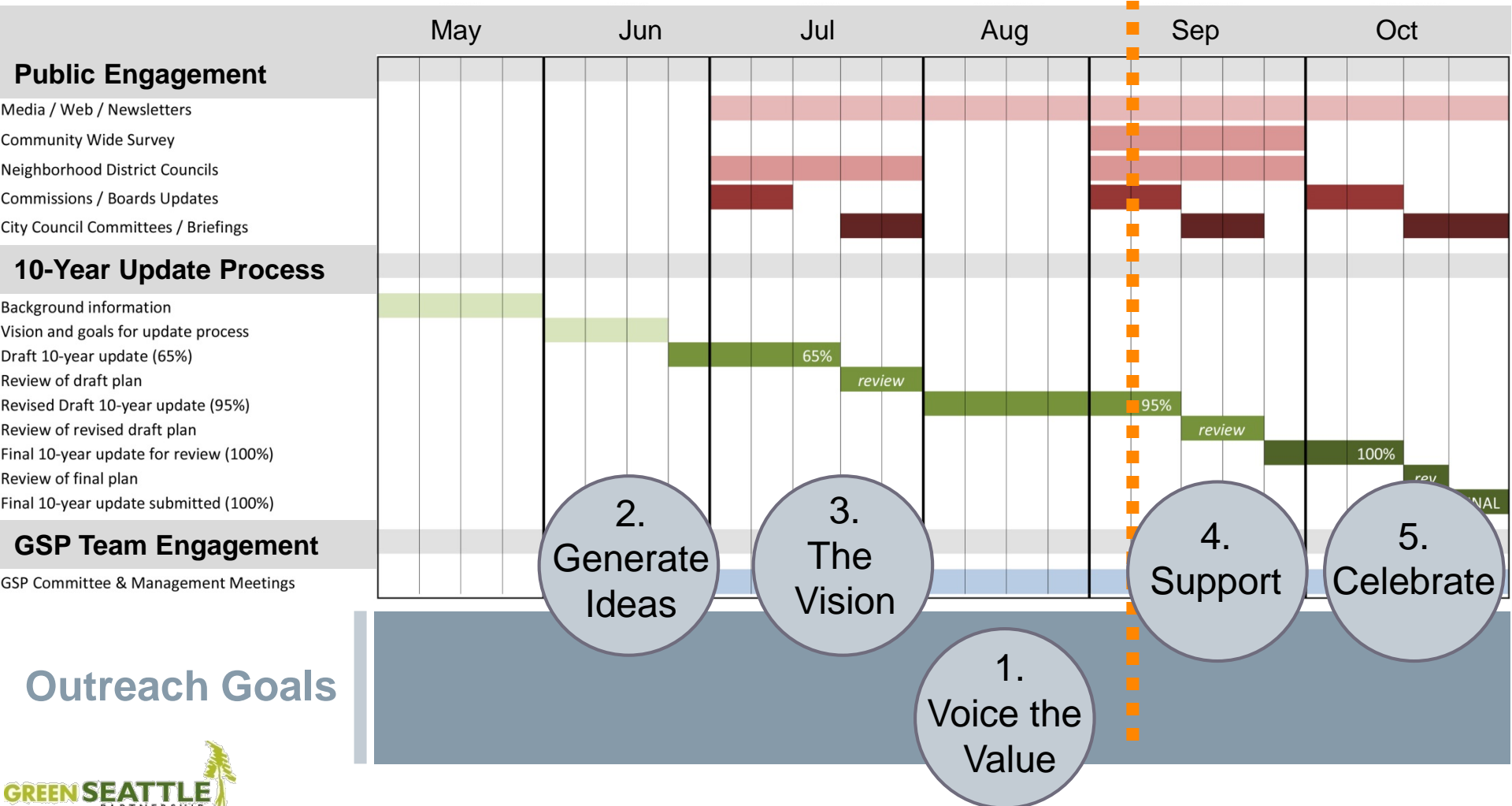


**... and AFTER  
THAT**

# Engagement Process

## 2015 Project Timeline Green Seattle Partnership | 10-YEAR PLAN UPDATE

We are here



## Vision

---



**“Promote a livable city by re-establishing and maintaining healthy forested parklands throughout Seattle.”**

- *GSP 20 Year Strategic Plan*

**“Contribute to a livable city by ensuring healthy urban forests in Seattle.**

- *20-Year Strategic Plan Update*



## The Problem

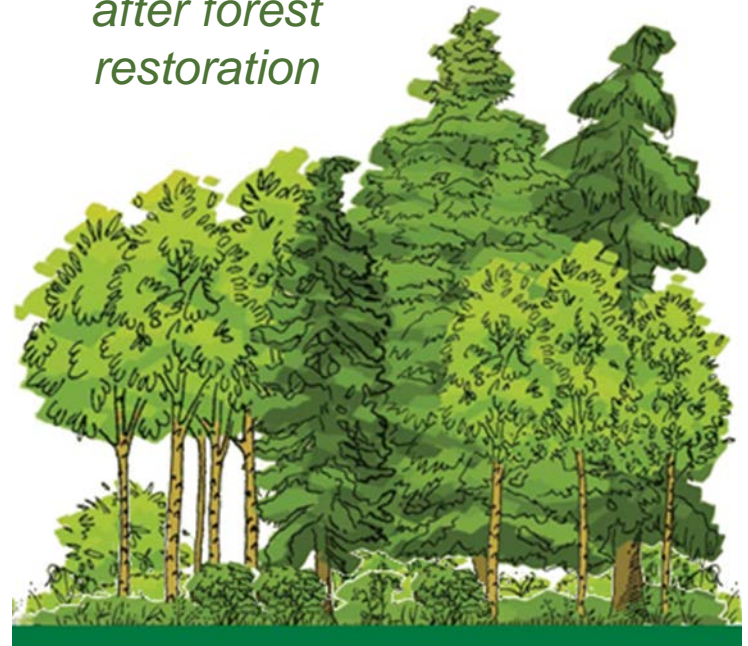
---

- Invasive plants and declining tree canopy
- Increasing urban density
- Maintaining our success
- Increasing public awareness

*before forest restoration*



*after forest restoration*





The Solution =

### Field Work

Forest restoration is a multi-year process. It involves removing invasive plants, planting new native trees and understory plants, and establishing and maintaining those plants by continually removing invasive plant species from restoration sites.

While the Green Seattle Partnership plans to restore 2,500

### Resources

The challenge we face is significant. The need for financial and human resources is considerable. Detailed analysis shows it will cost approximately \$52 million to restore and maintain the 2,500 acres of forested parklands over the coming 20 years.

erage of about \$20,000 per acre plus 100,000 volunteer hours

### Community

The most important element for success is a concerned and committed community. Our plan begins with communication to build awareness that our forests are dying, to create a demand for action, and to show residents

## OUR STRATEGIC PRIORITIES

Restoring and maintaining Seattle's forested parklands is no small feat; it requires a significant investment of time and resources to accomplish. With the support of an informed, organized, motivated and diverse community base, additional funding, dedicated partners, and the support of the City, GSP will have the resources require our goals and keep Seattle parklands resilient well into the future.



### RESTORATION & MAINTENANCE WORK

GSP improves the health of our urban forests by restoring them to more sustainable natural areas that contribute to a cleaner environment, improved wildlife habitat, and reduced stormwater runoff and erosion.

#### OUR CHALLENGES



### COMMUNITY ENGAGEMENT

GSP strengthens communities in Seattle by creating places and opportunities for people to come together in healthy ways to enjoy nature in the heart of our dense urban environment.

#### OUR CHALLENGES



### RESOURCE ACQUISITION

GSP will continue to advocate for the resources needed to accomplish the program's goals through City of Seattle funding, empowered resident advocates, and leveraged partnerships.

#### OUR CHALLENGES

The Solution =



## *Restoration*

- To restore 2,500 forested parkland acres by 2025

## *Community*

- To galvanize an informed, involved and active community

## *Resources*

- To ensure long term maintenance and sustainability

## The Solution – *a coordinated effort*

---

*GSP has become part of a citywide effort, in addition to our partner organizations, spanning multiple departments and programs to support trees and urban forests in Seattle.*

*Some of these include:*

- SDOT
- OSE
- City Light
- SPU
- Parks



## The Solution – *what we have accomplished to date*

---

*forested parkland acres  
in restoration*

**1,300+**

**935,000+** volunteer hours

**80+** parks

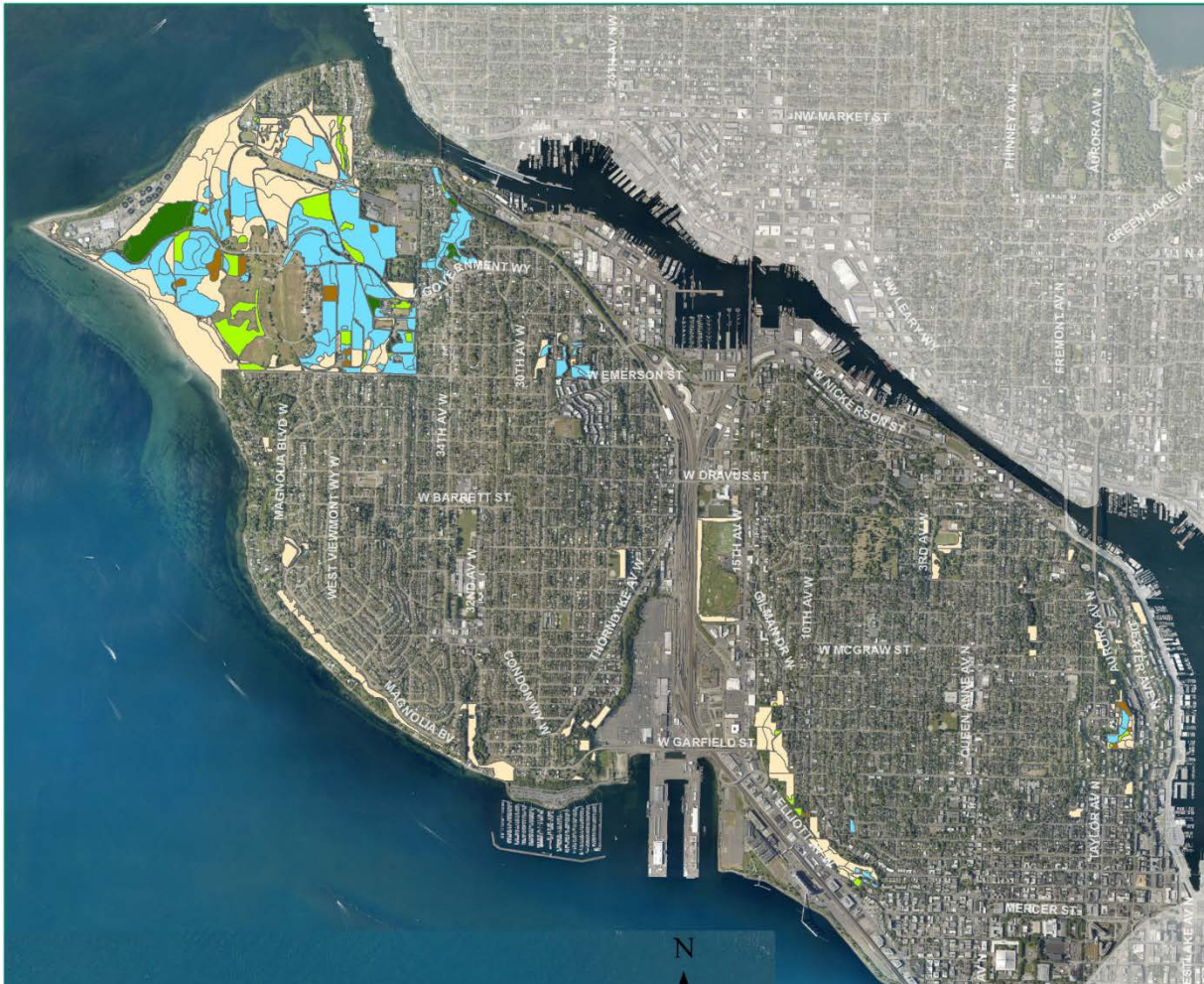
## Organization – *Restoration, Resources and Community*

---

- Seattle Parks & Recreation, Seattle Park District, and Partner Organizations
- Advisory Committees – mission and roles
- Youth engagement – committees and Executive Council
- Forest Steward representation
- Reporting, transparency and assessments

# Implementation

## Neighborhood focus – mapping and reporting



### Phase of Restoration

- 0 - Not in restoration
- 1 - Invasive removal
- 2 - Planting
- 3 - Establishment
- 4 - Long term monitoring and maintenance

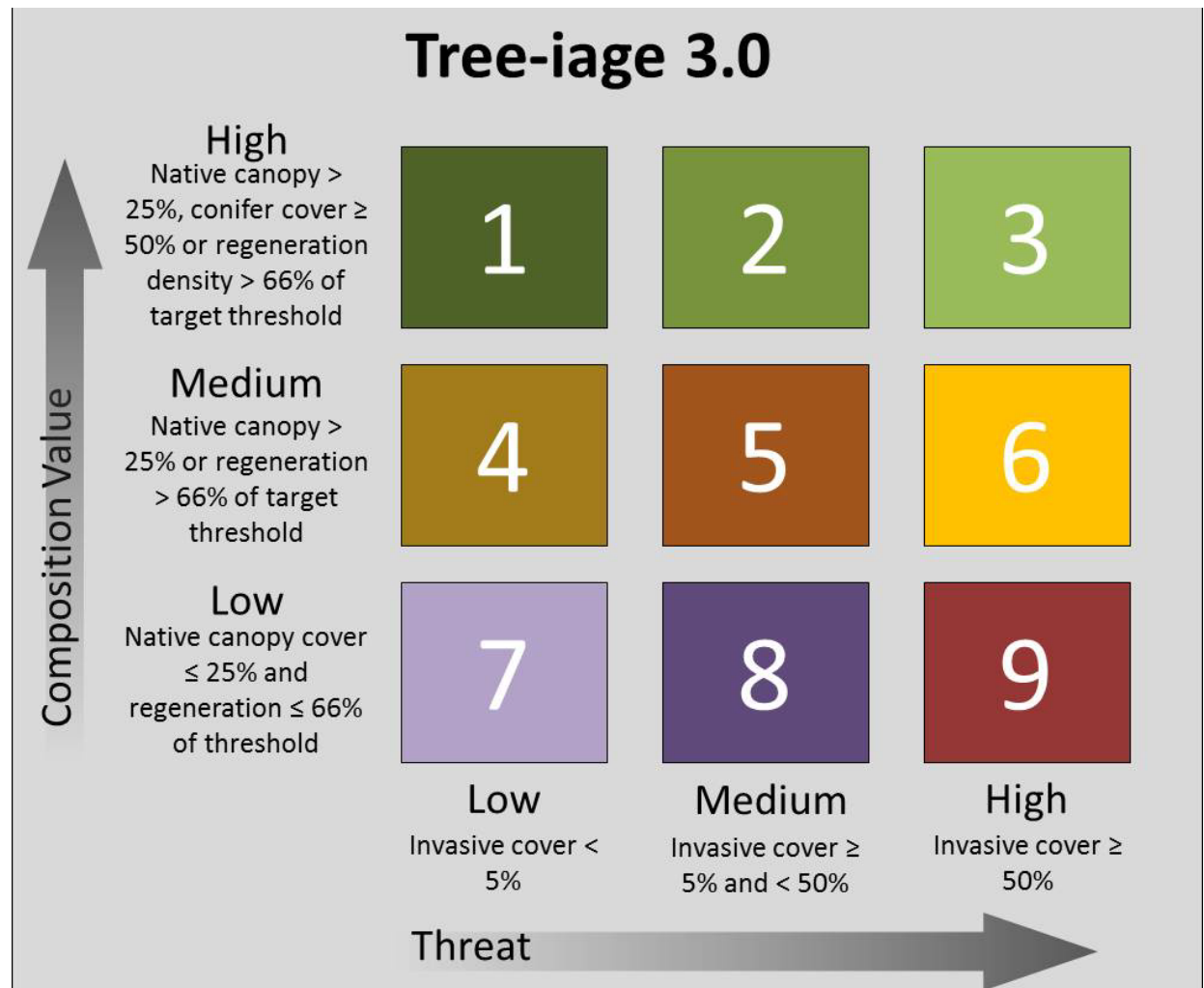


## Redefining urban forest assessments

- Canopy cover
- Invasive species
- Regeneration
- Threshold values

*Annual inventory by  
3<sup>rd</sup> party determines  
Phase 4 candidates*

*Final assessment by  
Plant Ecologists*



## Threshold values – determine Phase 4 enrollment

| Threshold                      | # Zones | % Inventories Zones |
|--------------------------------|---------|---------------------|
| Understory Richness            | 685     | 82%                 |
| Understory Cover               | 421     | 50%                 |
| Eco Value 3 (Tree-iage)        | 492     | 59%                 |
| Threat 1 (< 5% Invasive Cover) | 163     | 20%                 |
| Invasive Regen                 | 421     | 50%                 |
| Regen Richness                 | 555     | 67%                 |
| Regen Density                  | 553     | 66%                 |

**190** acres met all thresholds prior to 2017

**100** additional acres verified in 2017



## What's left?

- Cost variability and efficiencies
- Challenging sites
- New BMPs created and updated regularly  
*(slopes & wetlands)*
- Refined prioritization



## Projecting into the future

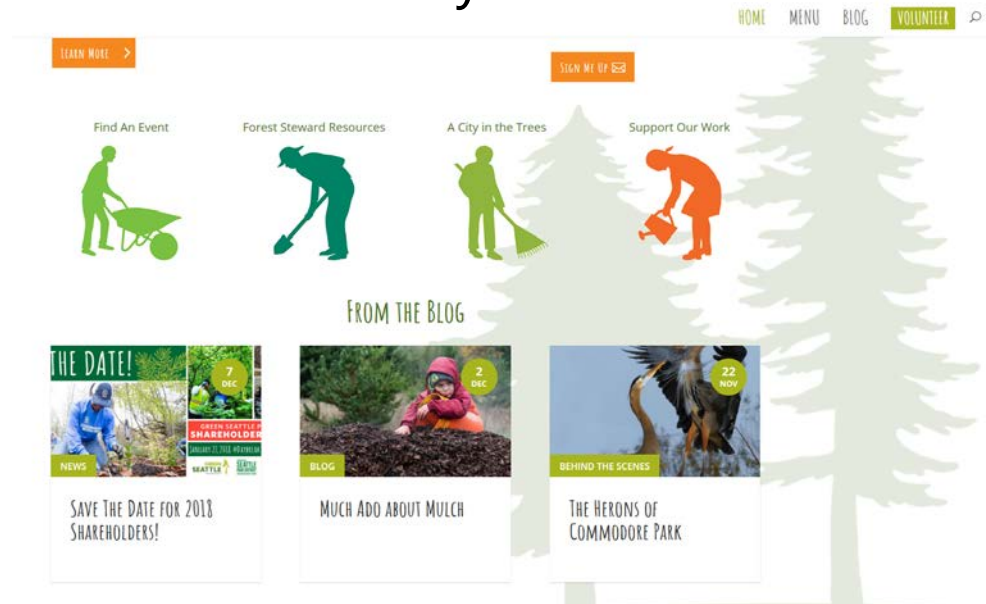
- Recognize long-term needs for field work
- Evaluate and define equity in restoration
  - resources
  - volunteers
  - geography
- Restoration beyond park boundaries
- Addressing the effects of climate change on restoration



# Community Engagement

## Outreach

- Improve awareness
- Increase feedback opportunities beyond Shareholder's meeting
- Allocate funding between Field Work and Community
- Improve outreach to and activity in underserved neighborhoods



# Community Engagement

## Engage youth

---

### **EXISTING** Youth Programs

- Environmental Learning Center programming
- Student Conservation Association (employment program)
- Forest Steward and Partner Organization youth events
- Urban Forestry Project

### **PROPOSED** Youth Engagement

- Add youth to GSP Committees and Executive Council
- Support and expand the Urban Forestry Project
- Increase access to programming for underserved youth

# Community Engagement

## The Forest Steward of 2025

- New volunteer opportunities – not all field work
- Demographics of volunteers to match the city-at-large
- Involvement in and tracking of Phase 4 work
- Recruiting new Forest Stewards and youth in leadership roles





## Funding

---

**Staff** *General and Capital funds (REET)*

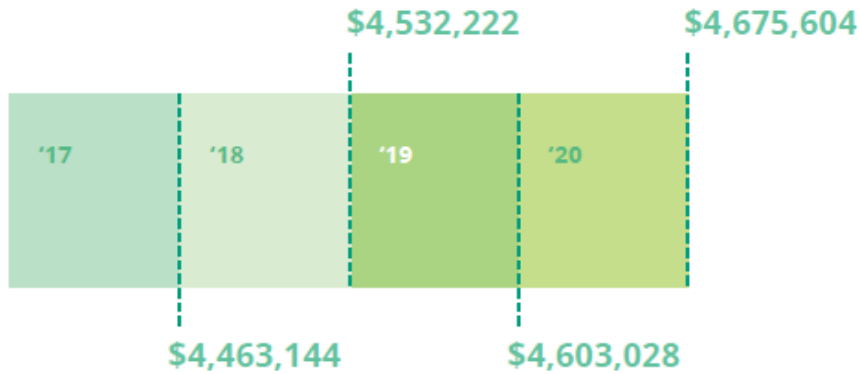
**Active Restoration** *REET & Park District*

**Maintenance** *Not funded*

# Resources



Total annual REET and Park District funding for the next four years:



| ACTIVITY  | FUNDING NEEDED TO ACHIEVE OUR GOALS |
|---|-------------------------------------|
| Enroll remaining acres in active restoration (1,273 acres)  | \$19,095,000                        |
| Move remaining acres into Phase 4 (the 1,120 acres currently in Phase 2 and 3 plus the 1,273 acres that are yet to be enrolled) | \$11,965,000                        |
| Maintain the acres that are in Phase 4 through the years 2017-2025  | \$1,963,000                         |
| Expand GSP activities beyond park boundaries  | \$4,350,000                         |
| Manage program (costs outside of direct acre costs, but necessary to achieve acreage success)                                   | \$5,700,700                         |
| <b>Total funding needed 2017-2025</b>   | <b>\$43,073,700</b>                 |
| <b>Average annual funding needed 2017-2025</b>  | <b>\$4,786,000</b>                  |

# Resources

## FINANCIAL CONTRIBUTIONS

Restoring 2,500 acres of forested parklands requires a significant investment of time and resources. Even as the initial enrollment and establishment efforts come to an end, continued stewardship of our forested parklands is a process that never ends. Financially, we need to secure a significant amount of additional funding to support GSP activities now and in the future.

- **Enroll All Remaining Acres:** The cost of enrolling all remaining acres into GSP program is estimated at \$19 million. This equates to an average of \$15,000 per acre, although actual costs can vary widely depending on individual site conditions.
- **Establish All 2,500 Acres:** Establishing all acreage after initial enrollment is expected to cost an additional \$12 million, or \$5,000 per acre.
- **Implement Long-Term Stewardship and Maintenance:** Once all acres have been transitioned to Phase 4 activities, it will cost approximately \$550,000 per year, and take the work of approximately 86,000 volunteer hours annually to adequately maintain all GSP sites.





# Questions?

## SAVE THE DATE!



**GREEN SEATTLE PARTNERSHIP  
SHAREHOLDERS MEETING**

JANUARY 27, 2018 @DAYBREAK STAR CULTURAL CENTER

