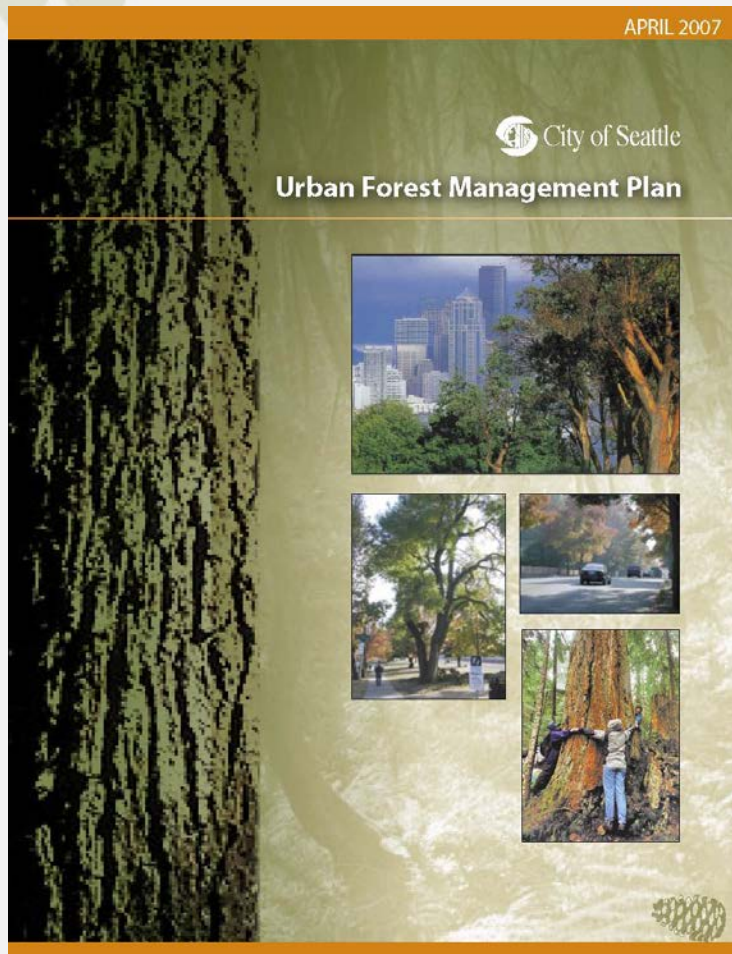


Seattle's urban forest goal



Seattle's urban forest is a thriving and sustainable mix of tree and understory species and ages that creates a contiguous and healthy ecosystem that is valued by the City and all Seattle residents as an essential environmental, economic, and community asset.

Urban Forest Management Plan



- Created in April 2007
- Being updated in 2012
- Establishes 30% citywide canopy goal
- Long-, mid-, and short-term strategies for achieving goals
- Implemented through annual workplans
- Managed via an inter-departmental team

What's new since 2007

- **Urban Forestry Commission created in 2009**
- **Created a new, permanent position in 2011 to manage Seattle reLeaf program**
 - Outreach and engagement
 - Trees for Neighborhoods – 2,300 trees to date
 - Tree Ambassador – 40 in 13 neighborhoods
 - Urban Orchards Stewards – 58 in 5 orchards



Seattle reLeaf
keep the emerald city green



What's new...

- **Seattle Department of Transportation:**
 - Street tree online map
 - Street Tree ordinance and Manual update

The screenshot displays the Seattle Street Trees online map interface. At the top, the Seattle.gov navigation bar includes links for City Services, Departments, Staff Directory, About Seattle, and City Contacts. The main header features the Seattle.gov logo and a search bar. Below the header, the map area is titled "Seattle Street Trees" and includes a search bar for "Find Address or Landmark" and a "Go" button. The map itself shows a grid of streets in Seattle, with various tree icons placed along the streets. The icons are color-coded and sized according to the legend on the right. The legend includes options for "Street Trees", "Table of Contents", "Heritage Tree", "Public Right of Way Tree", "Diameter" (Large, Medium, Small, Unknown), "Maintenance Responsibility" (SDOT, Private (Last Update 1992), Parks, Other City Dept.), and "Parcel" (2297). The SDOT logo is visible in the bottom left corner of the map area.

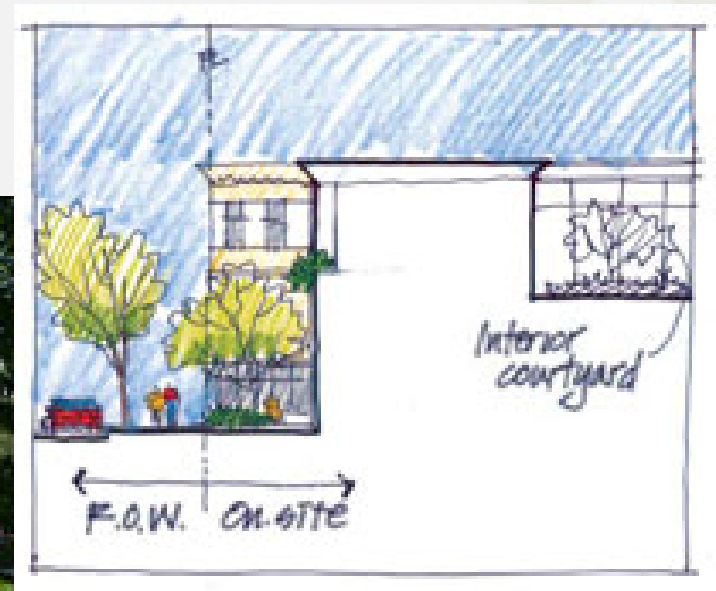
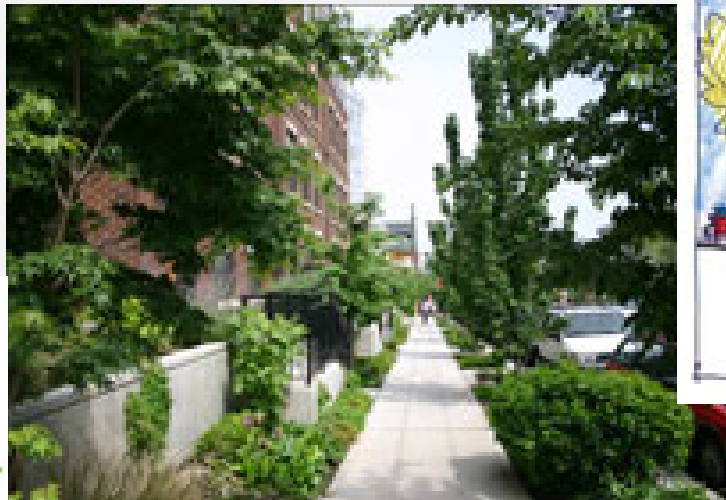
What's new...

- **Parks and Recreation Department:**
 - Green Seattle Partnership:
 - Over 800 acres in restoration
 - Over 500,000 volunteer hours
 - 130 Forest Stewards



What's new...

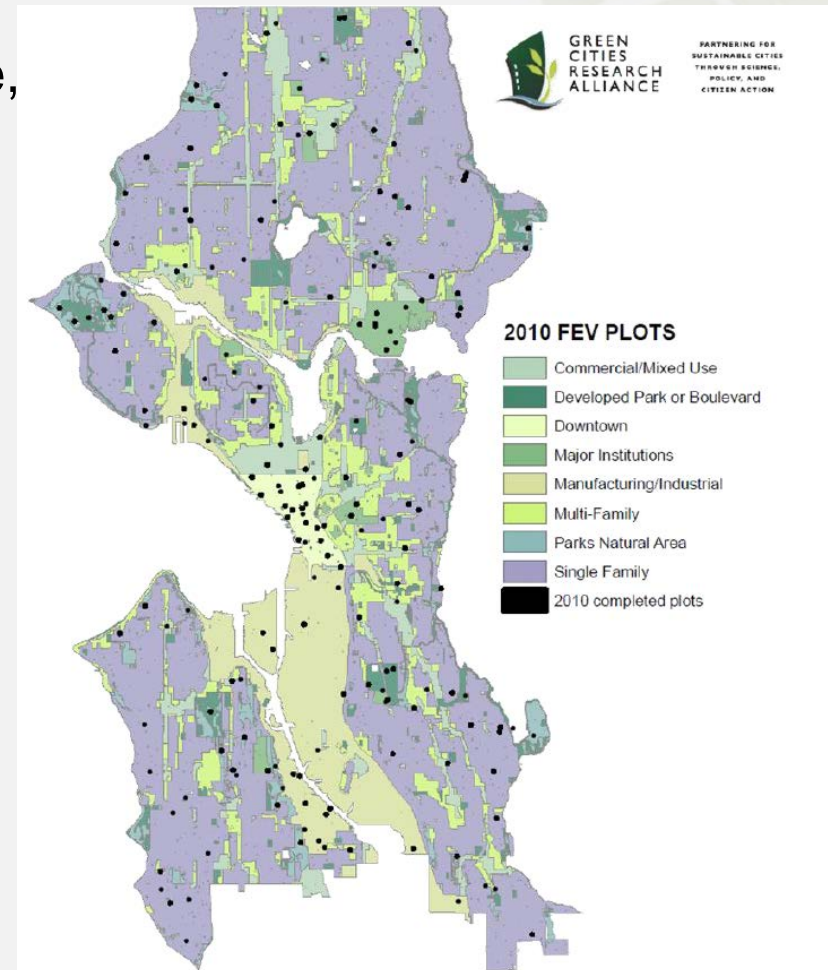
- **Department of Planning and Development:**
 - GreenFactor
 - Stormwater regulations and rates (with SPU)
 - Private property tree regulations update



SEATTLE x green factor

What's new...

- **iTree sampling survey**
 - UW, King County, City of Seattle, and Forterra
 - 2010/2011 data from 223 plots
 - Information included in UFMP update:
 - Condition
 - Evergreen/deciduous breakdown
 - Size
 - Invasive species



UFMP 2012 Update

- Citywide canopy goal remains 30%
- Strategies remain the same, including focusing on outreach and engagement in residential areas
- New information on condition of urban forest (health, species, size, invasives) has been incorporated
- Short-, mid-, and long-term action agenda has been updated
- Research agenda added



Canopy Cover Goal

Land Use Category	2002 Canopy Cover	2007 Canopy Cover	UFMP Canopy Cover Goal
Commercial/ Mixed Use	8.4%	9.7%	15%
Developed Park	25.9%	25.5%	25%
Downtown	4.2%	4.7%	12%
Major Institution	18.4%	19.4%	20%
Industrial	3.8%	4.3%	10%
Multi-Family	16.6%	17.1%	20%
Parks Natural Area	82.5%	80.4%	80%
Single Family	25.2%	25.7%	33%
Total	22.5%	22.9%	30%

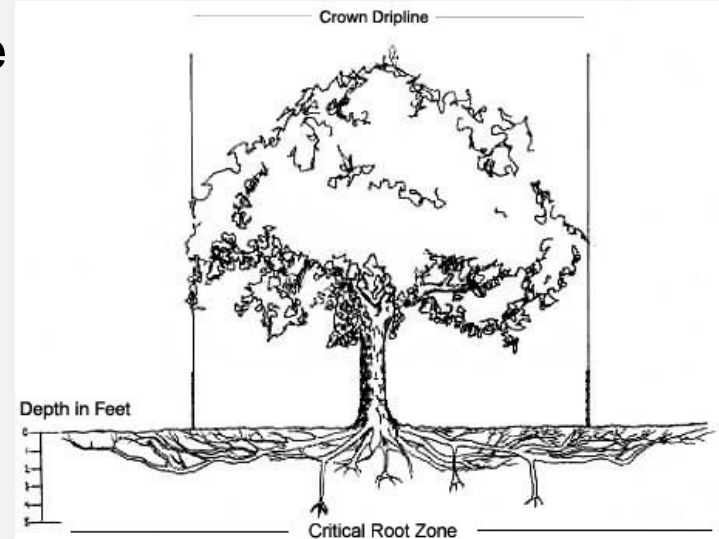
2012 update strategies

- Strategies remain the same but are reframed:
 - Understand
 - Coordinate
 - Preserve and restore
 - Regulate
 - Inspire, inform, and engage



Action Agenda

- Notable short-term actions:
 - Canopy cover assessments every five years
 - Continue two-for-one tree replacement
 - i-Tree data analysis
 - Tree planting potential data “ground-truthing”
 - Develop policy to prioritize expenditures
 - Explore expansion of tree planting incentives
 - Encourage right tree in the right place
 - Expand volunteer opportunities



Research Agenda

- Life-cycle costs of deferred tree planting and maintenance
- Costs/benefits of different pruning cycles
- Monetizing urban forest benefits (i.e. public health, energy, climate change)
- Method to quantify stormwater and water quality benefits



Public Outreach Process

- Public comment period July 11 – October 1, 2012
- Dedicated webpage (www.seattle.gov/trees/management.htm)
- Open House – August 1, City Hall, 5:30 – 7:30 p.m.
- Blogs, newsletters, and Listservs
- Neighborhood district councils & Scallops groups
- Non-profits
- Professional organizations (AIA, ISA, APA, AALA, R/E)



UFMP Update Contact

Questions or comments
2012 Urban Forest Management Plan update
contact:

Sandra Pinto de Bader
(206) 684-3194

Sandra.Pinto_de_Bader@seattle.gov
www.seattle.gov/trees/management.htm

Office of Sustainability & Environment
PO Box 94729
Seattle, WA 98124-4729

Public comment open through October 1, 2012