

# Thornton Creek Confluence



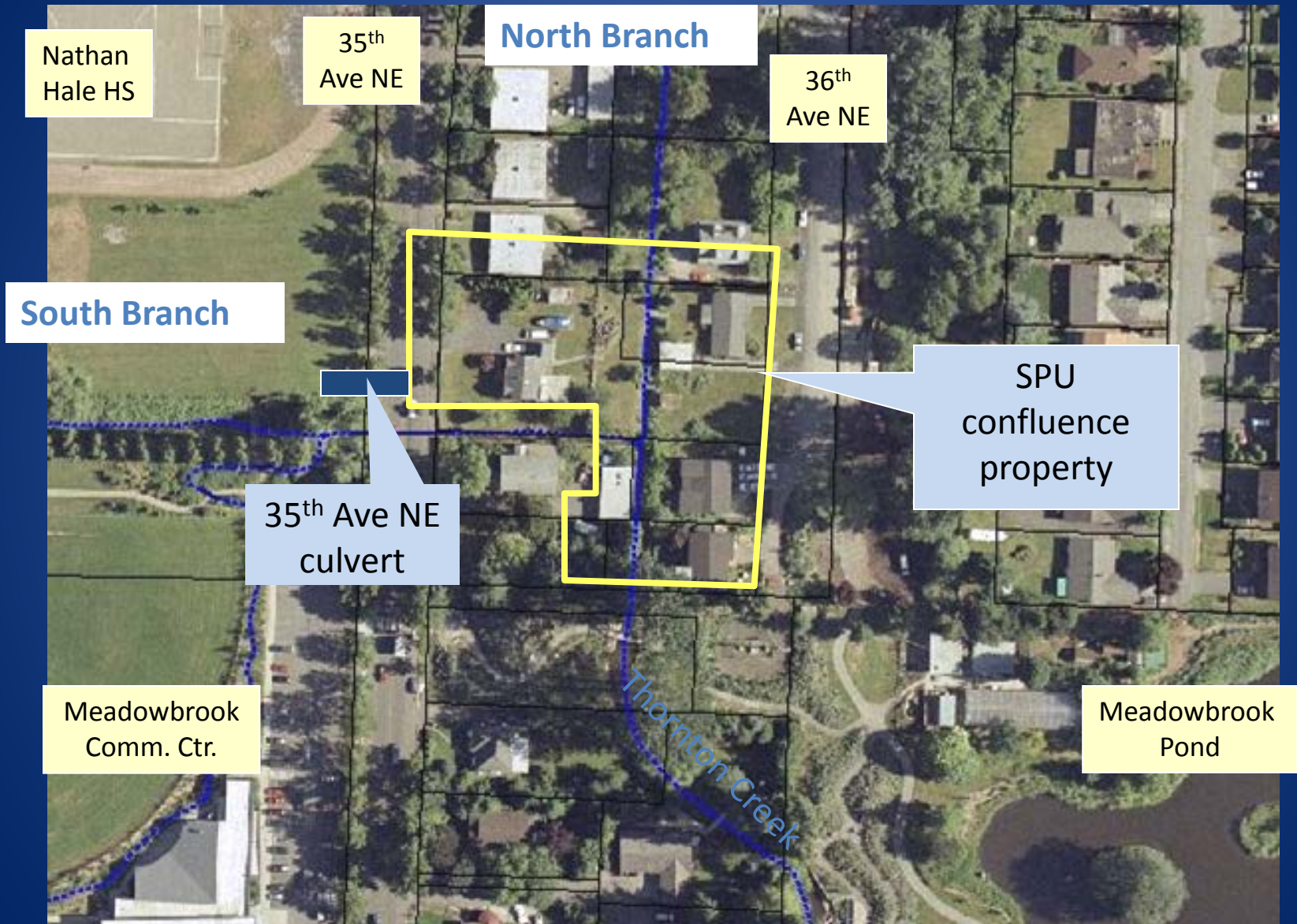
Urban Forestry Commission - September 5, 2012

# Agenda

- Welcome and Introductions
- Project Overview
- 60% Design
- Discussion: What are your thoughts?
- Next Steps



# Project Site



There are a number of problems  
throughout the Thornton Creek Basin

Such as...

# Property Flooding





# Street Flooding/Closures



↑  
36<sup>th</sup> Ave NE

35<sup>th</sup> Ave NE



# Utilities and road infrastructure at risk due to flooding





# Stormwater Capacity is Exceeded





# Landslides and Erosion





# Many areas with little habitat value







# Confluence Project Objectives

- Meet drainage service levels for 35<sup>th</sup> Ave NE
- Remove flow choke point to address upstream flooding.
- Reduce downstream peak flow velocities.
- Improve instream spawning and rearing habitat.
- Improve water quality.



# Project Overview Confluence Area

**Replace 35<sup>th</sup>  
culvert and shift  
alignment to the  
north**

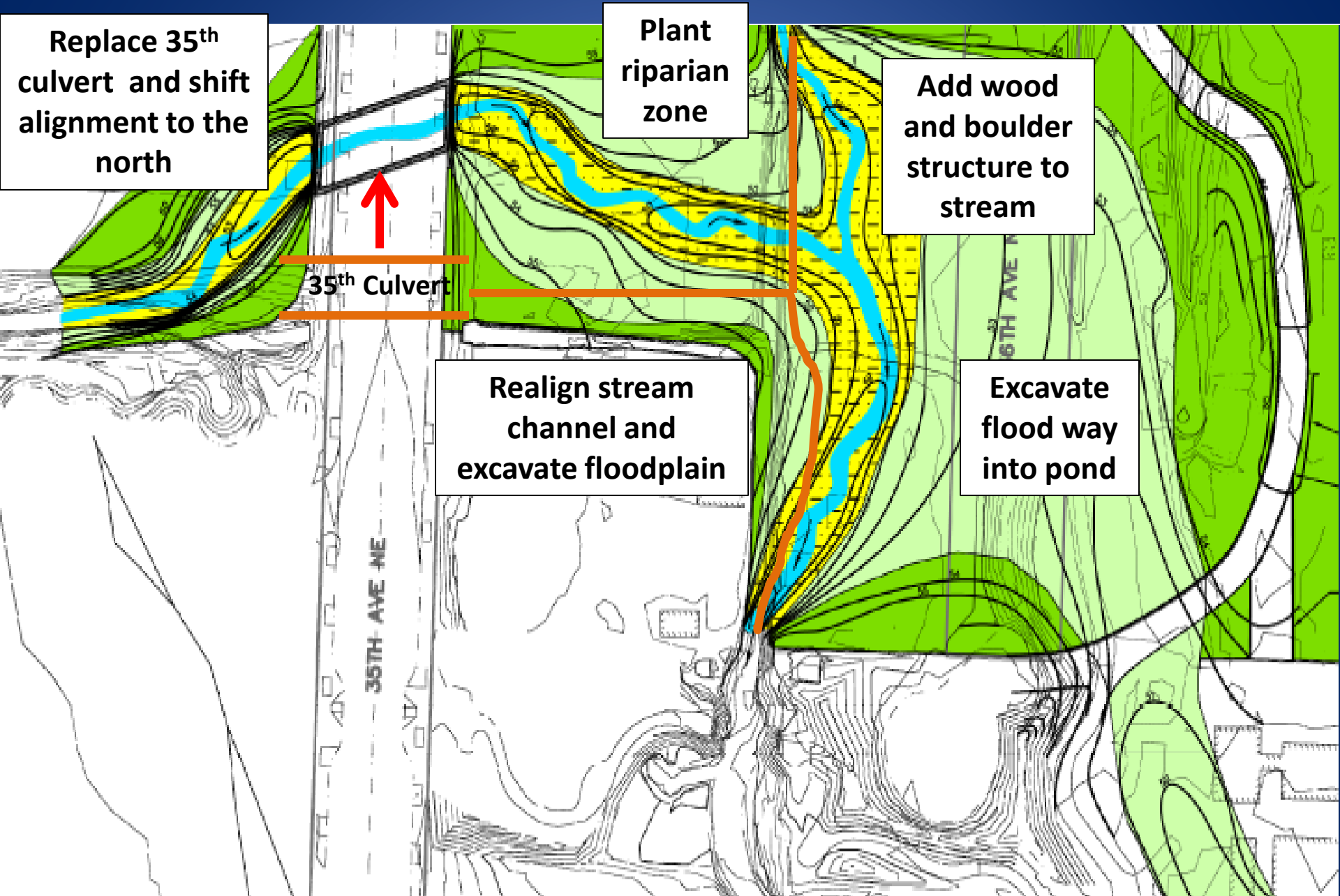
**Plant  
riparian  
zone**

**Add wood  
and boulder  
structure to  
stream**

## 35<sup>th</sup> Culvert

## Realign stream channel and excavate floodplain

**Excavate  
flood way  
into pond**





## View 1: 35th Avenue Looking East Over Thornton Creek Floodplain



Thornton Creek Confluence - Design Renderings  
August 2, 2012 #09029



## View 1: 35th Avenue Looking East Over Thornton Creek Floodplain



Thornton Creek Confluence - Design Renderings  
August 2, 2012 #09029



SvR



## View 2: 36th Avenue Looking South to Meadowbrook Pond



current conditions

Thornton Creek Confluence - Design Renderings  
August 2, 2012 #09029



SvR



## View 2: 36th Avenue Looking South to Meadowbrook Pond



Thornton Creek Confluence - Design Renderings  
August 2, 2012 #09029



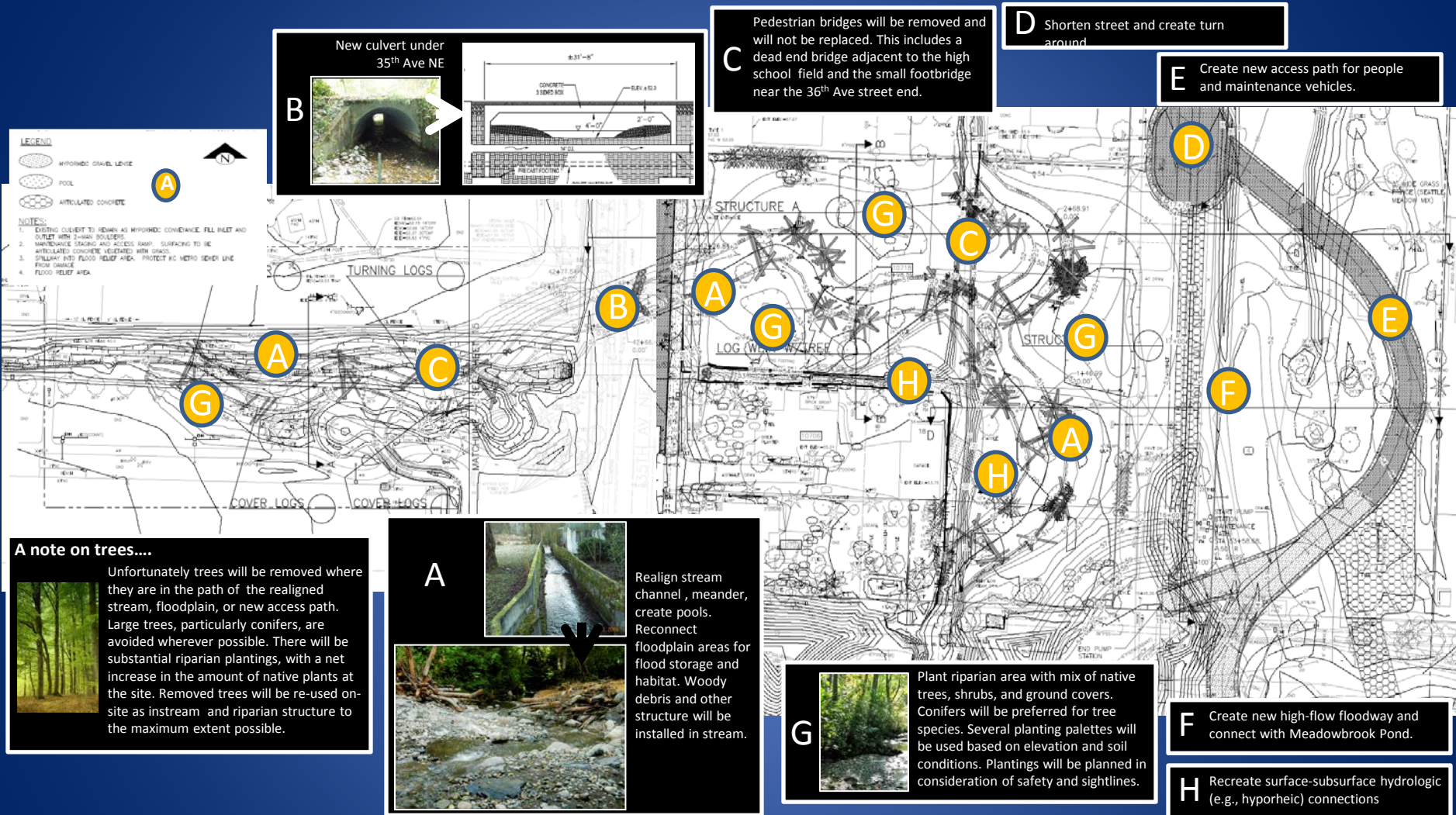


Project Task	Schedule
Design and permitting	1Q 2011 - 1Q 2013
Construction Contract Preparation	1Q 2013 - 2Q 2013
Construction	2Q-3Q 2013

60% Design



# Thornton Creek Confluence Improvement Project



## All comments are welcome, but particular areas we'd like feedback:

- To improve habitat and create more flood storage, we need to remove about 13 poplar trees west of 35th Ave NE. Is this an acceptable trade-off?
- The existing gravel lot at the end of 36th Ave NE will go away. Should another gravel area be provided for parking along 36th?
- Culvert replacement under 35th Ave NE will require 3 to 7 weeks of construction, depending on full versus partial road closure. This will impact travel on 35th. Do you prefer a full road closure and shorter duration (3-4 weeks)?
- In order to maximize flood storage, the plans currently have no paths through the site and show removal of the existing footbridge near the 36th Ave NE street end. Is there a preference for allowing some limited pedestrian access versus keeping the area natural?
- Would an overlook from the 35th Ave NE sidewalk be preferred in place of a path through the site or in addition to?

Discussion: What are your thoughts?



# Next Steps

- August 4, 2012: onsite drop-in question/answer session
- August 17, 2012: Deadline for public comments on 60% design
- September 2012: SEPA Checklist released for public review and comment
- January 2013: 90% project design released

# Thank you!

[www.seattle.gov/util/meadowbrook](http://www.seattle.gov/util/meadowbrook)

Sign up for the project mailing list:

[www.seattle.gov/lists/meadowbrook.htm](http://www.seattle.gov/lists/meadowbrook.htm)