

March 2018

Equitable Development Initiative Planning Commission Briefing

Briefing Objectives:

- EDI & EDI Fund background
- Current Status

What is Equitable Development?

- **Quality of life outcomes** are equitably experienced by the people currently living and working in a neighborhood, as well as for new people moving in.
- **Public and private investments, programs, and policies** meet the needs of residents, including communities of color, reduce racial disparities, and take into account past history and current conditions.

Equitable Development Initiative

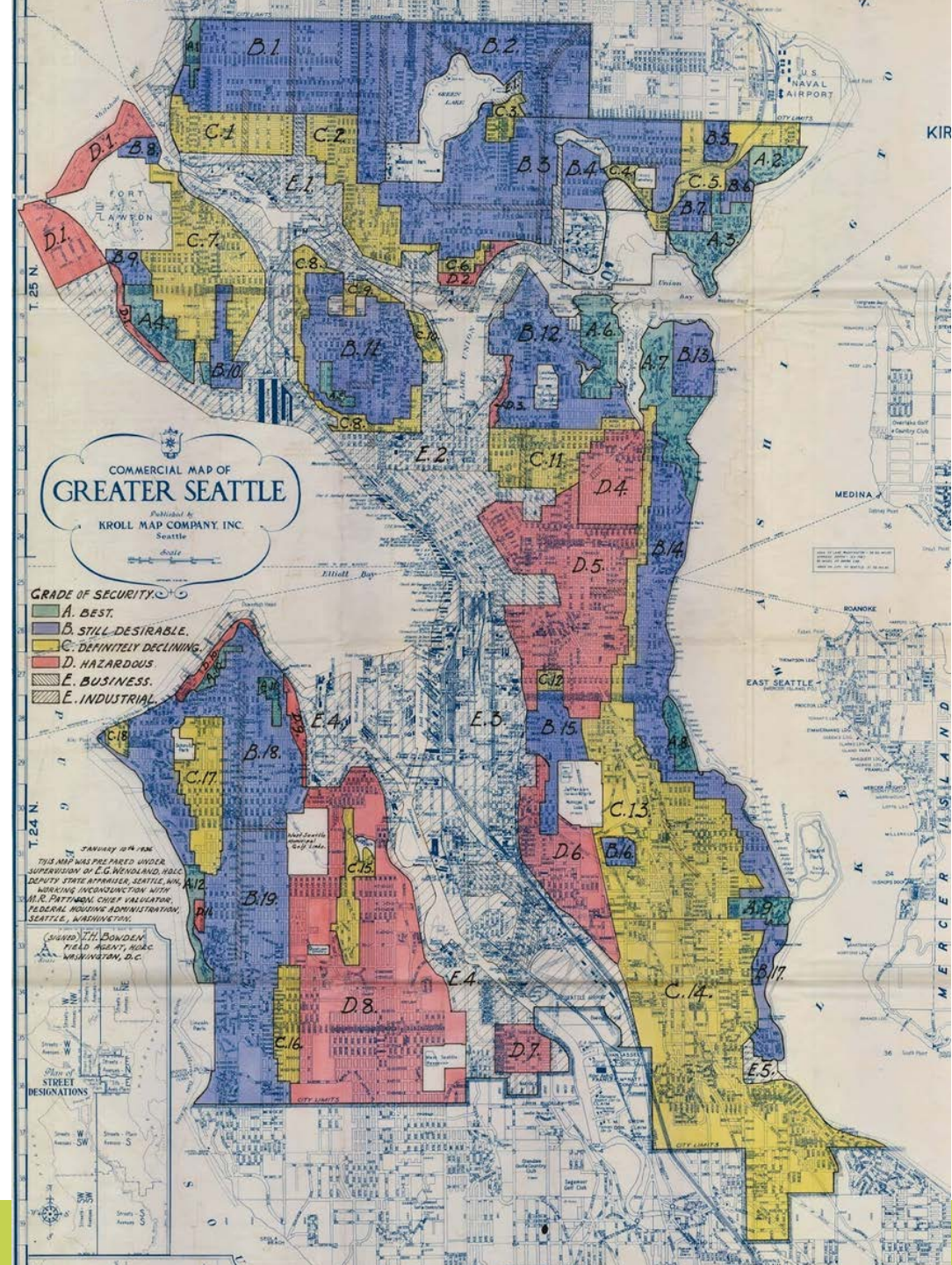
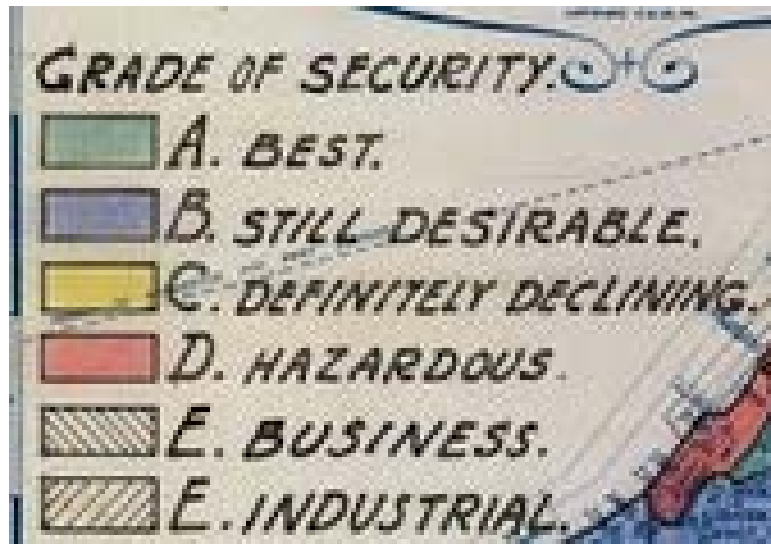
- Equity Analysis as companion to the EIS to inform Growth Strategy
- Race and Social Equity Goals and Policies in the Comprehensive Plan
- Equitable Development Implementation Plan

Equitable Development Implementation Plan

- Equitable Development Framework
- Systemic Change
- Targeted strategies: Place-based and citywide
- Stewardship

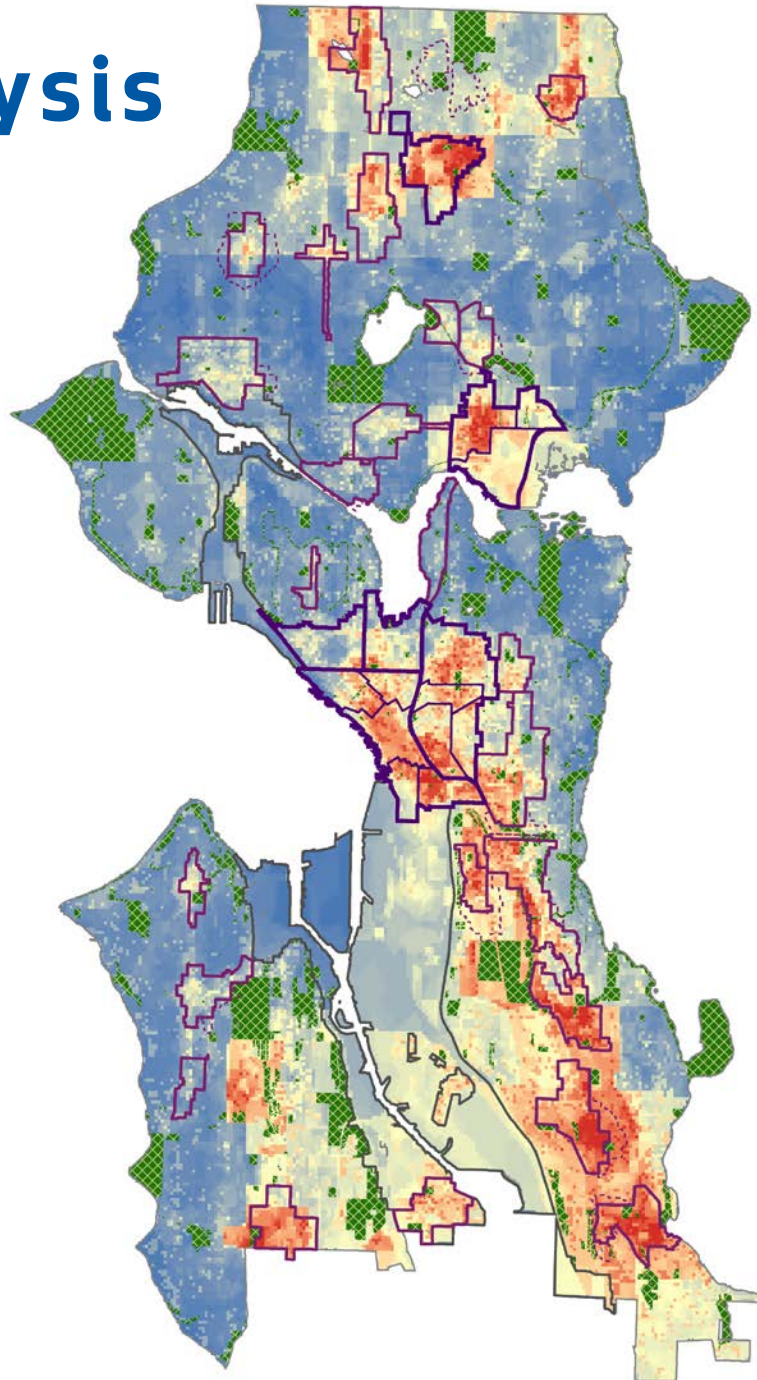
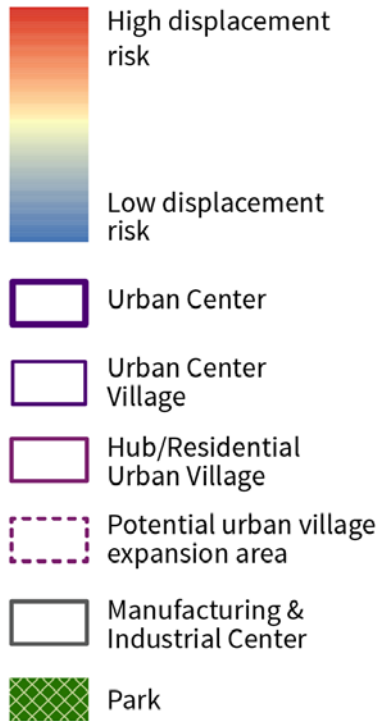
Redlining in Seattle

Investment decisions made by previous generations contributed to the inequities communities experience today.

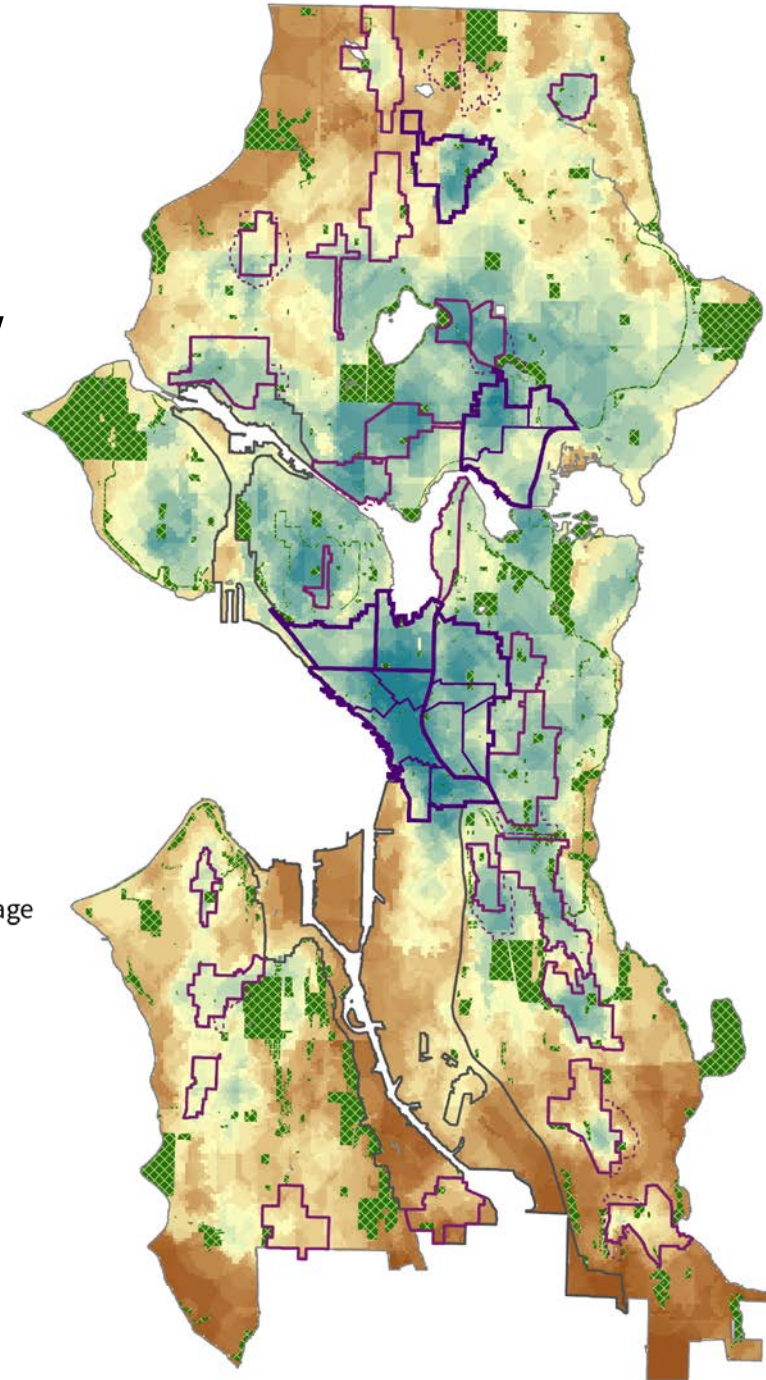


Equity Analysis

Risk of Displacement



Access to Opportunity



Equitable Development Framework: Strong People, Strong Communities

Strategies to achieve community stability and resilience in the face of displacement, and great neighborhoods with access by all:



Advance economic mobility and opportunity.



Promote transportation mobility and connectivity



Prevent residential, commercial, and cultural displacement.



Develop healthy and safe neighborhoods



Build on local cultural assets.



Provide equitable access to all neighborhoods

Targeted strategies that mitigate high displacement risk

Place-based strategies that:

- Advance economic mobility
- Prevent displacement
- Build on cultural assets

Located in high risk displacement neighborhoods such as:

- Rainier Beach/Othello
- Central Area
- Chinatown/International District/Little Saigon
- Lake City/Northgate
- South Park
- Westwood/Highland Park

EDI Values

- Centering communities most impacted by displacement
- Community-driven strategies
- Acknowledging historic injustices
- Accountability
- Leverage
- Flexibility and interdependence
- System change

Initial EDI Projects Status

Rainier Beach
Food
Innovation
District



Southeast Seattle
Multicultural
Community Center

**SOUTHEAST ECONOMIC
OPPORTUNITY CENTER**

Little Saigon
Landmark Project

William Grose Center
for Cultural Innovation

OPCD

Equitable Development Initiative Fund

Investment in targeted place-based strategies

FUNDING

- \$16M from City Plaza sale and
- \$430,000 CDBG for 2018
- \$5M annually from AirBNB tax starting 2019

WHY

Address historic and market inequities through investing in projects and programs that mitigate displacement and increase access to opportunity.

HOW

- Community Capacity Development
- Project Development

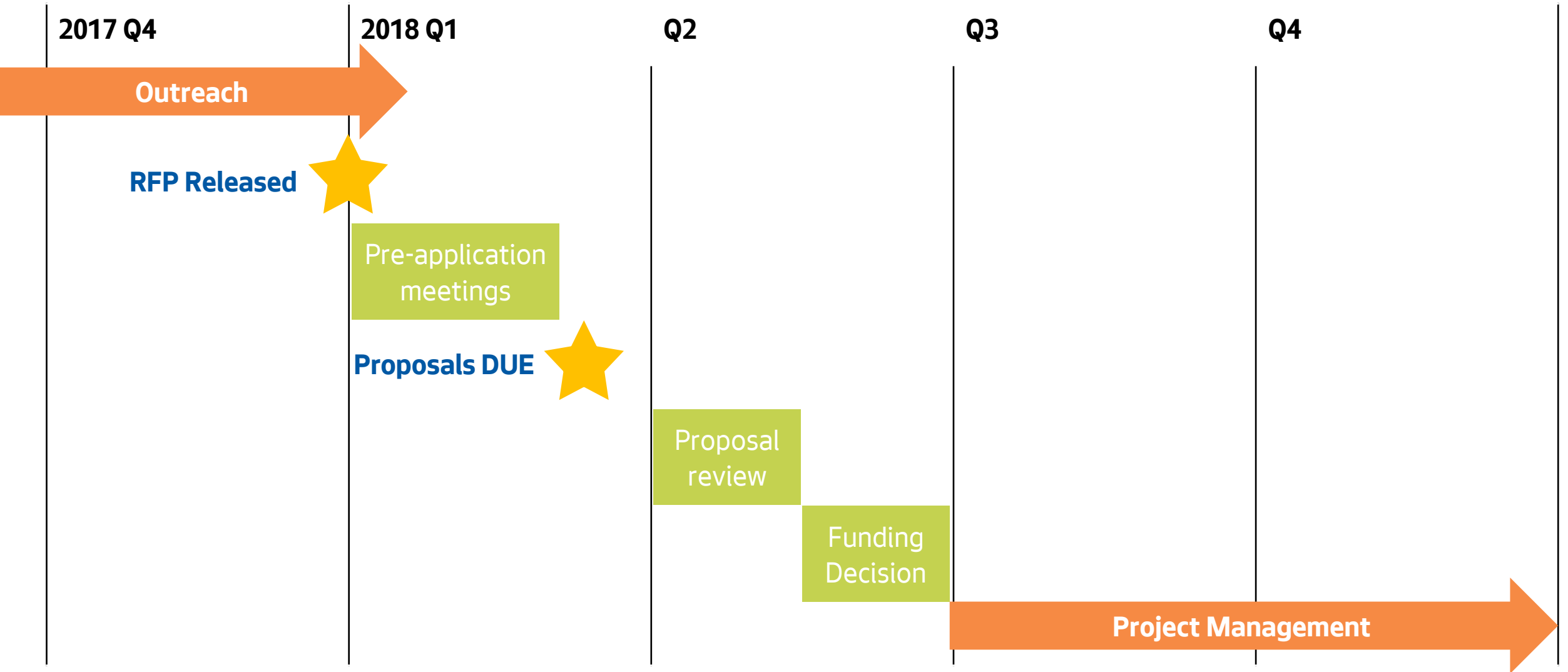
Accessing EDI funds

1. Initial Approval
2. Capacity-Building
3. Capital investments (ex. acquisition or construction funding).

| | Capacity-Building | Pre-development | Acquisition/Capital | Total Cap |
|------------------|-------------------|-----------------|---------------------|-------------|
| Per Project | N/A | \$250,000* | \$1 million | \$1 million |
| Per Organization | \$75,000/year | N/A | N/A | N/A |

Multiple stages can happen at the same time.

EDI Funding Round 2 - Timeline



**Together we can leverage our collective resources
to create communities of opportunity for
everyone, regardless of race or means.**



**And all communities are able to determine
their own futures.**

OPCD