



One Seattle Comprehensive Plan

Update for the Seattle
Planning Commission

March 9, 2023

Public engagement schedule



Equitable community engagement

Our engagement centers voices from:

- BIPOC communities
- Limited-English populations
- Immigrants & refugees
- Youth & Elders
- LGBTQ community
- People with disabilities
- Low-income populations
- Renters
- People experiencing homelessness
- Other historically under-represented communities

We are co-creating engagement through:

- Partnerships with Community-Based Organizations serving BIPOC communities
- Partnerships with 10 Community Liaisons
- Accessible virtual engagement through the Engagement Hub

We are also engaging with:

- City boards and commissions
- Public agencies
- Cultural organizations
- Policy advocates
- Community-based organizations
- Small business owners
- General public

One Seattle Plan Community Meeting Series

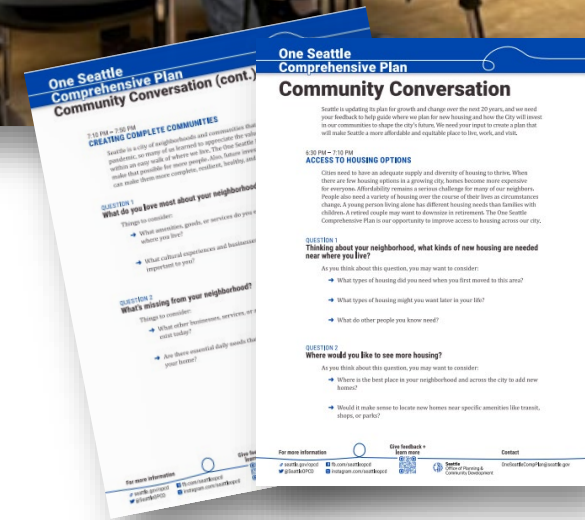


- 5 in-person community meetings in neighborhoods across Seattle
 - New Holly
 - Central District
 - West Seattle
 - Loyal Heights
 - Meadowbrook
- One virtual citywide community meeting
- Mix of open-house style and facilitated small group discussions
- 500+ community participants
- 3,000+ feedback post-its and discussion comments

One Seattle Plan Community Meeting Series

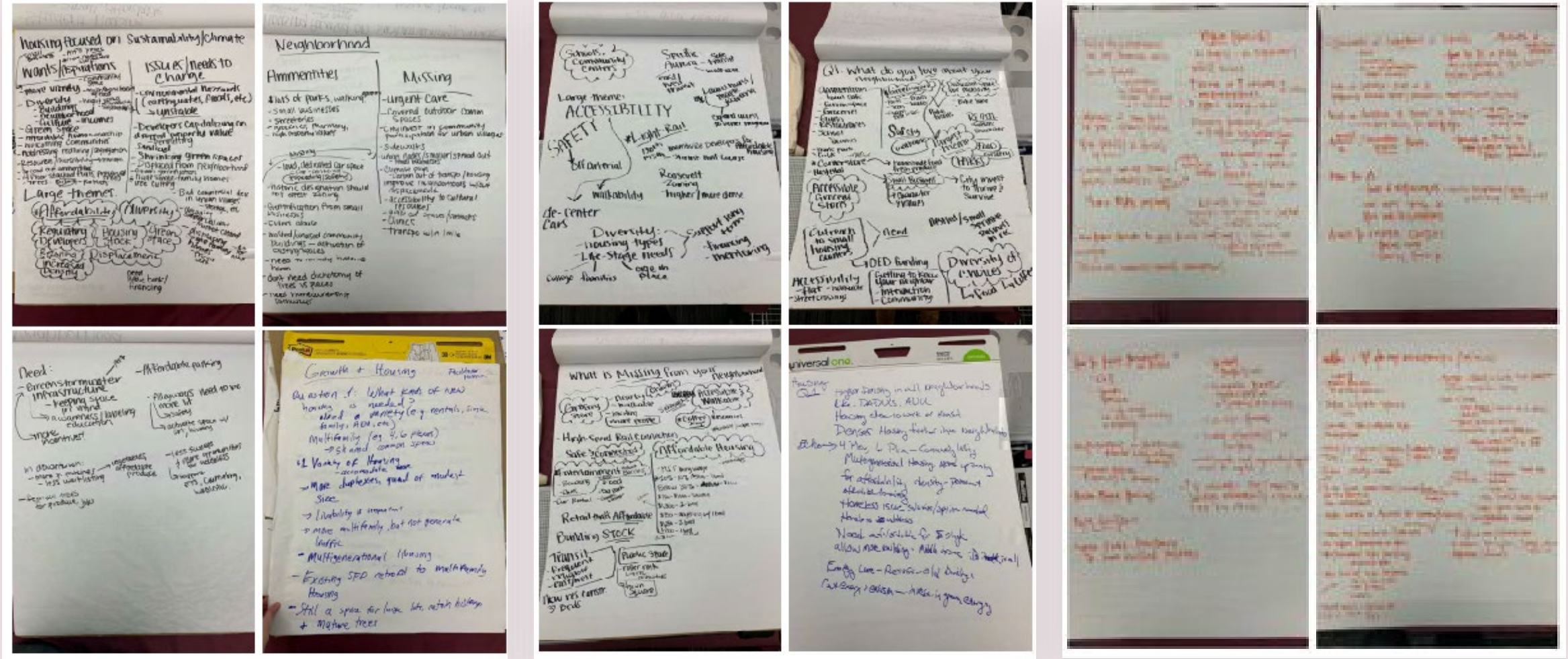
Community Conversation

- **Access to Housing Options**
 - Thinking about your neighborhood, what kinds of new housing are needed near where you live?
 - Where would you like to see more housing?
- **Creating Complete Communities**
 - What do you love most about your neighborhood?
 - What's missing from your neighborhood?



One Seattle Plan Community Meeting Series

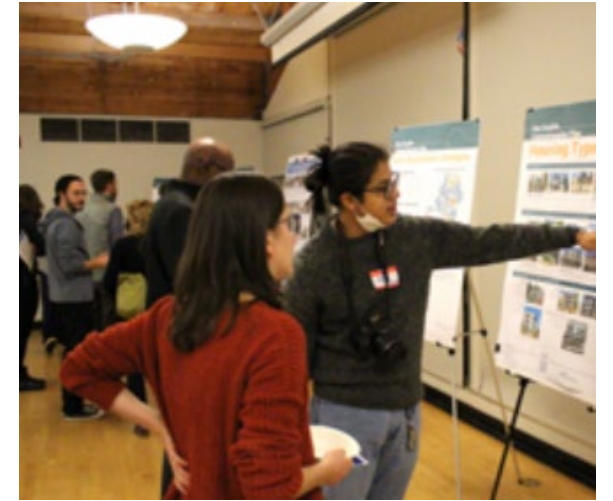
What We Heard



One Seattle Plan Community Meeting Series

What We Heard: Types of New Housing

- More affordable; greater variety of options; increased density; more accessible ownership opportunities
- Family-oriented units
 - 2–4 bedrooms, affordable to families
 - Designs & neighborhoods suitable to families with children, multigenerational families
- Social housing and community land trusts
- Anti-displacement & anti-gentrification strategies
- Mixed-used development
 - Access to retail
 - Affordable commercial space ownership



One Seattle Plan Community Meeting Series

What We Heard: Locations of New Housing



- More housing **“everywhere”** and **“in all neighborhoods”**
 - Density should be spread throughout the city, including NR & multifamily residential
 - Concentrate new development in low-displacement risk areas
 - Preserve tree canopy and greenspaces
- Near **transit, parks, & other amenities**
- Expand existing urban villages & add many new, smaller neighborhood anchors
- Away from arterials/close to arterials

One Seattle Plan Community Meeting Series

What We Heard: Existing Neighborhood Assets

- **Proximity to amenities**
 - Parks, grocers, transit, trees, businesses, and shops
- **Walkability**
- **Third spaces for community**
 - Businesses (coffee shops, bars, restaurants)
 - Free public gathering spaces (plazas, car-free streets, parks, open space)
 - Community centers
 - Arts & cultural spaces



One Seattle Plan Community Meeting Series

What We Heard: Missing Neighborhood Assets

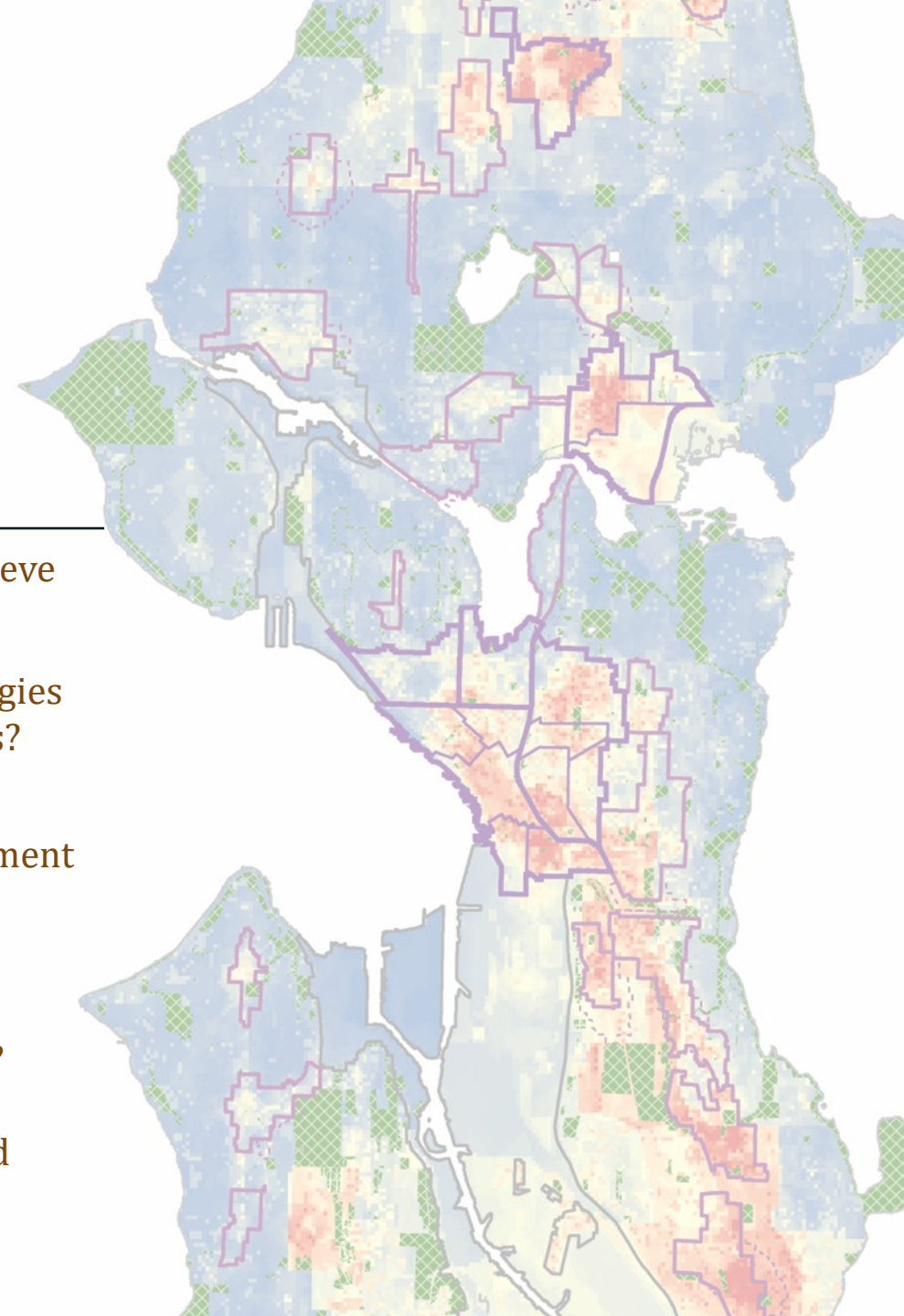
- Missing "spaces"
 - Third spaces (artist and makers spaces)
 - Green spaces (dog parks, public parks, open spaces, natural spaces)
 - Cultural and art spaces
- Community centers
 - Gathering spaces, recreation centers, cultural centers
 - Emergency response centers, climate resilience centers, health centers
- Diverse & accessible housing options
- Goods & services (grocers/food, childcare)
- Transportation infrastructure (bike, ped, transit)
- Safety



Shaping the Plan: Data & evaluation

As we create the Plan, we will assess our progress in several ways:

Types of analysis		Questions they help us answer
Racial Equity Toolkit	➡	Do potential new policies help achieve our racial equity outcomes?
Analysis of alternative growth strategies	➡	How would different growth strategies affect our enormous housing needs?
Updated displacement risk index	➡	Which areas are at risk of displacement and how will future growth affect them?
Equitable Development Monitoring Program (EDMP)	➡	How do we ensure ongoing accountability / plan effectiveness?
Equitable community engagement	➡	How are input and priorities voiced by historically underrepresented communities shaping the plan?



Community-Based Organization (CBO) Partners

- **Khmer Community of Seattle/King County**
Southeast Seattle, White Center, Highland Park
- **Duwamish Valley Sustainability Association**
South Park, Georgetown
- **Estelita's Library**
Central District, Beacon Hill
- **Asian Pacific American Labor Alliance (APALA)**
Beacon Hill, Downtown Seattle, Capitol Hill, First Hill, South Seattle, Central District, Ballard, Northgate, Greenlake, University District, Skyway & Displaced Residents Commuting to Seattle
- **Capitol Hill EcoDistrict**
Capitol Hill, Central District, First Hill



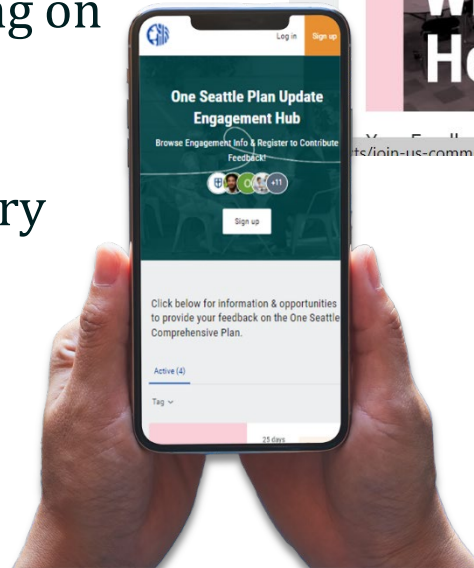
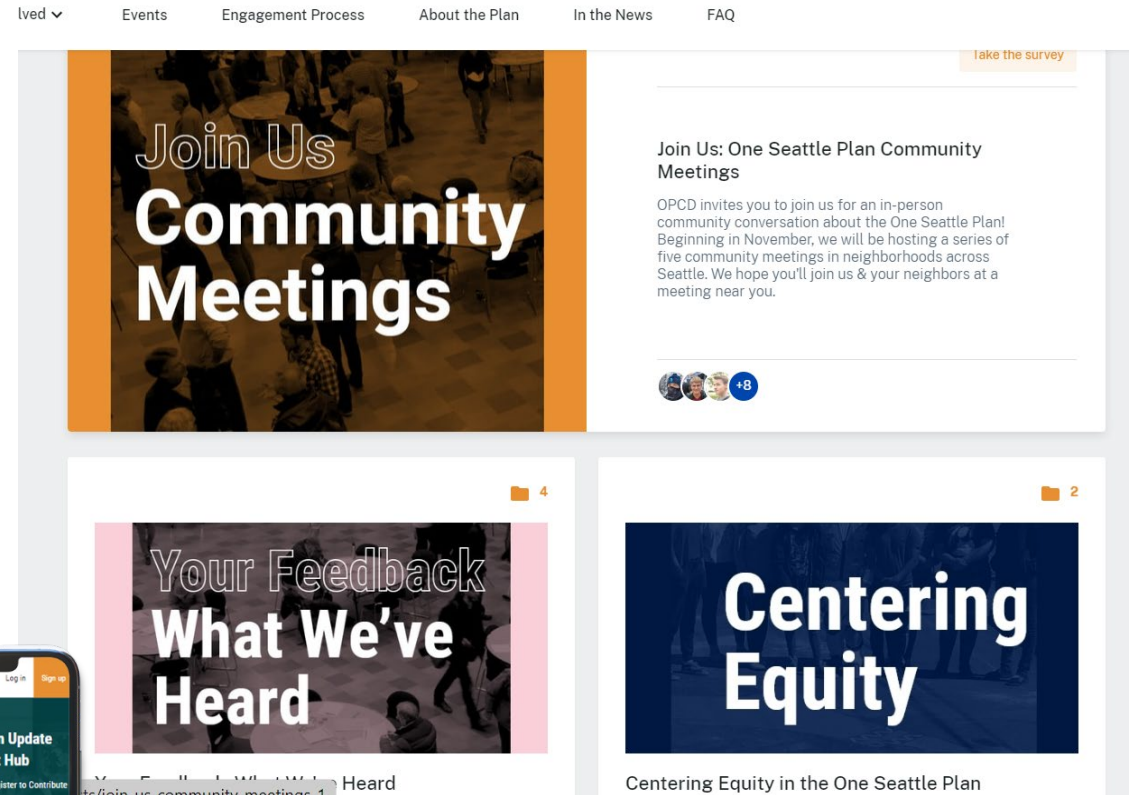
One Seattle Plan Engagement Hub

Preliminary usage statistics:

- 38% of registered users identify as BIPOC
- Over 20,000 comments received
- Over 70% of users accessed the Hub from a mobile device
- 1,258 translation requests across seven different languages

Phase 4 Engagement:

- New tool for interactive commenting on Draft Plan
- Use platform to showcase:
 - Phase 1-3 Engagement Summary
 - RET outcomes
 - CBO final reports & recommendations



engage.oneseattleplan.com

What's Next in 2023

- **Key engagement Milestones for remainder of this year:**
 - CBO partners: policy workshops & recommendation submission (Feb/March)
 - Phase 1-3 Engagement Summary, Draft Plan & DEIS Release (May)
 - Formal comment period (June/July)
 - Community Dialogues (June-September)
 - Public engagement for zoning implementation (TBD)