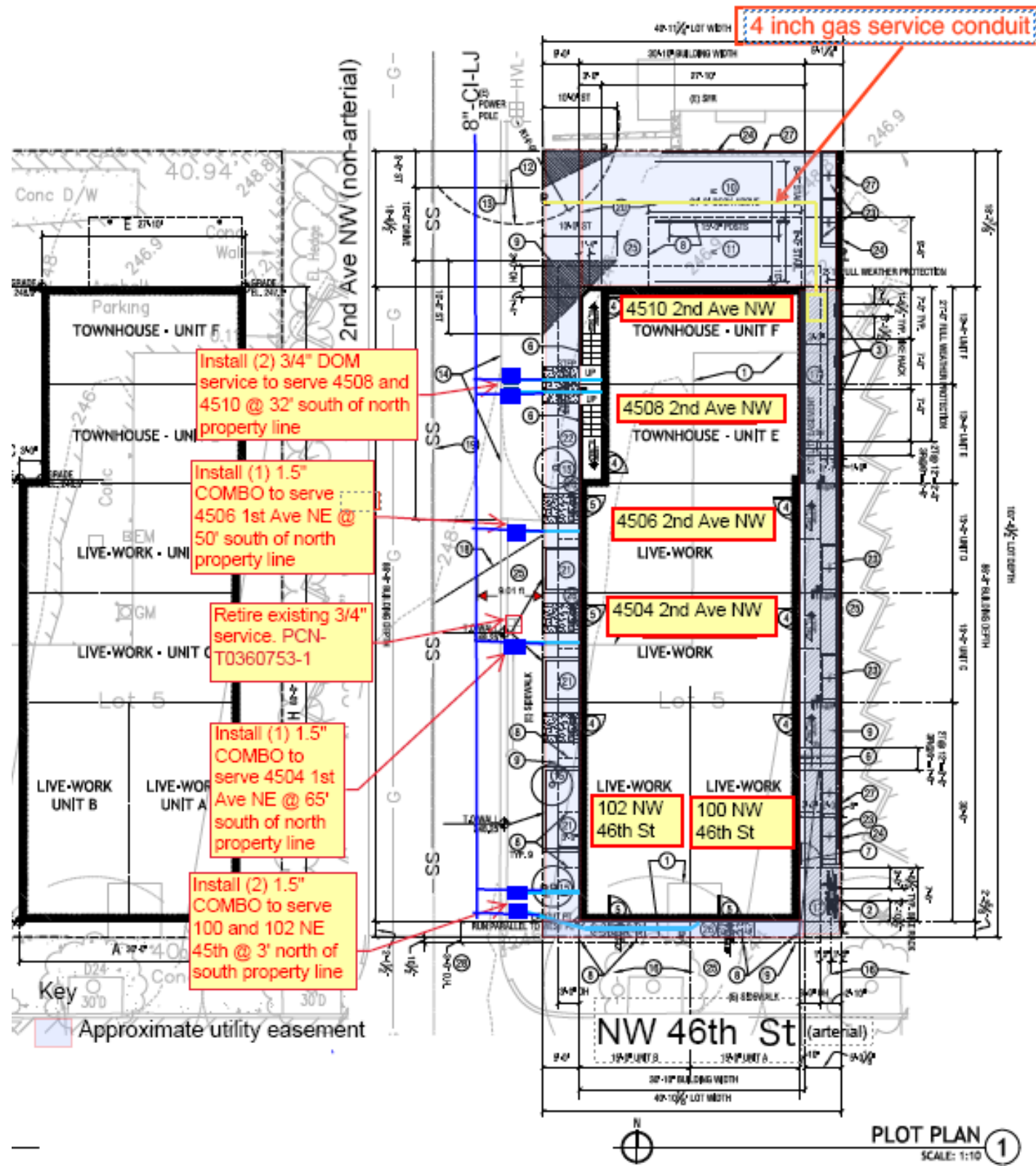


# WATER SERVICES SITE PLAN



## Required Elements on the Water Services Site Plan

### The water services site plan for your project must:

- Be drawn to scale (minimum 1" = 10')
- Call out existing water meter location, size, type and proposal for each (reuse or retire).
- Call out proposed water meter location, size, type and dimension from the nearest side lot line. (Locations must be in the right of way and not in a parking area or driveway.)
- Show abutting water main location, size and material (reference project WAC).
- Show underground utilities.
- Show right of way improvements, including existing and proposed curbs, trees and sidewalks, as well as vertical obstructions like poles, signs and hydrants.
- Clearly show lot lines and if applicable, all unit lot lines.
- Show building footprint(s) with legal address(es).
- Provide the name of each abutting street and indicate whether it's an arterial or non-arterial.
- Meet Standard Plan 314b for clearances.

### For new 4" and larger services or as required:

- Include a profile (cross-section) showing the depth of each existing and proposed utility.
- Include a stamp and signature by a licensed engineer or surveyor in Washington State.

## Resources for Completing the Water Services Site Plan

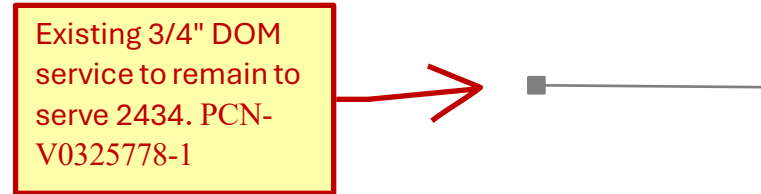
- [DSO Water and Sewer Research App](#)
- [SDOT Seattle Roadway Classification](#)
- [Seattle Services Portal](#)
- [Standard Plan 314b](#)
- [WTR-440 - Water Service Requirements](#)

Image: example architectural/engineering plot plan of NW 46<sup>th</sup> St and 2nd Ave NW illustrating required water services site plan elements. Existing and proposed services are in yellow boxes with red borders, indicating location, size, type, and proposal, along with meter number, if available. Water mains are shown in blue, along with gas utility with the call out "4 inch gas service conduit".

# WATER SERVICES SITE PLAN

## Water Services Site Plan Call-Outs

Existing services - Indicate location, size, type, and proposal, along with meter number, if available



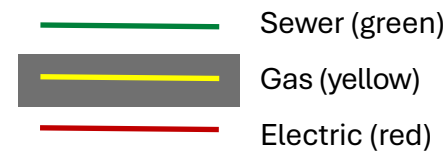
Proposed services - Indicate location, size



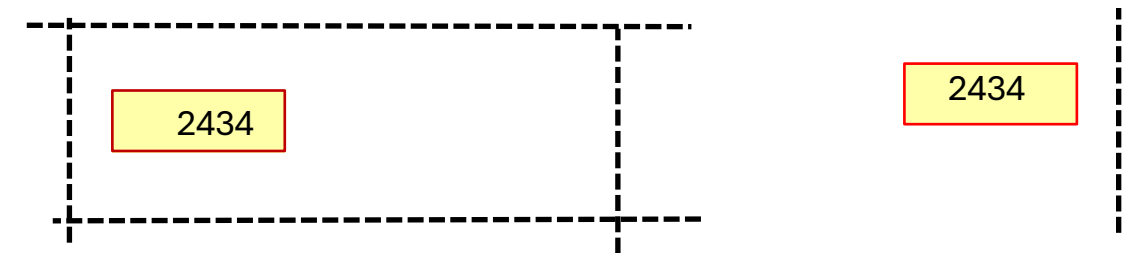
Show abutting water main - Indicate location, size and material



Show underground utilities - Indicate location and type



Show legal addresses within building footprint and subdivision or unit lot lines



Indicate whether the abutting right of way is arterial or non-arterial

Arterial

Non-arterial