

# Tolt Dam Early Warning System Carnation Area Community Meeting

June 30, 2021

# Meeting agenda


- **Welcome** *(Alex Chen, Seattle Public Utilities)*
- **Inundation map update** *(Jared Schneider, King County Office of Emergency Management)*
- **Project goals and schedule** *(Josh Campbell, Seattle Public Utilities)*
- **Siren system replacement and signage update** *(Joe Blaschka, ADCOMM)*
- **Next steps** *(Josh Campbell, Seattle Public Utilities)*
- **Questions and comments**



# Zoom tips and tricks

## Questions?

If you need technical support,  
email [mdiaz@enviroissues.com](mailto:mdiaz@enviroissues.com)

7 Seattle Public Utilities  City of Seattle

Unmute Start Video Security Participants 2 Chat 1 Share Screen Record Reactions End

# Zoom tips and tricks

## Questions?

If you need technical support,  
email [mdiaz@enviroissues.com](mailto:mdiaz@enviroissues.com)

7

Seattle Public Utilities



City of Seattle

Unmute

Start Video

Security

Participants 2

Chat

Share Screen

Record

Reactions

End



# South Fork Tolt Dam

- Earth fill dam, provides 1/3 of Seattle's regional water supply
- Seattle City Light hydroelectric facility
- ~11 river miles to nearest homes
- ~14 river miles to Carnation
- 24/7 surveillance and monitoring
- Daily visual inspections/instrument readings
- Safety and Security Plan
- Periodic engineering, federal and independent consultant inspections
- Emergency Action Plan, including siren system



# Update since February 24 community meeting

- Incorporating feedback into the design
- Advancing the siren system replacement and new signage design
- Meeting and collaborating with City of Carnation officials and King County Office of Emergency Management
- Monthly updates at City Council meetings
- Dam safety monitoring and weekly Wednesday tests





# Questions?



# King County Emergency Management

**Jared Schneider**

*Emergency Management  
Program Manager – Hazard  
Mitigation*

*[jaschneider@kingcounty.gov](mailto:jaschneider@kingcounty.gov)*

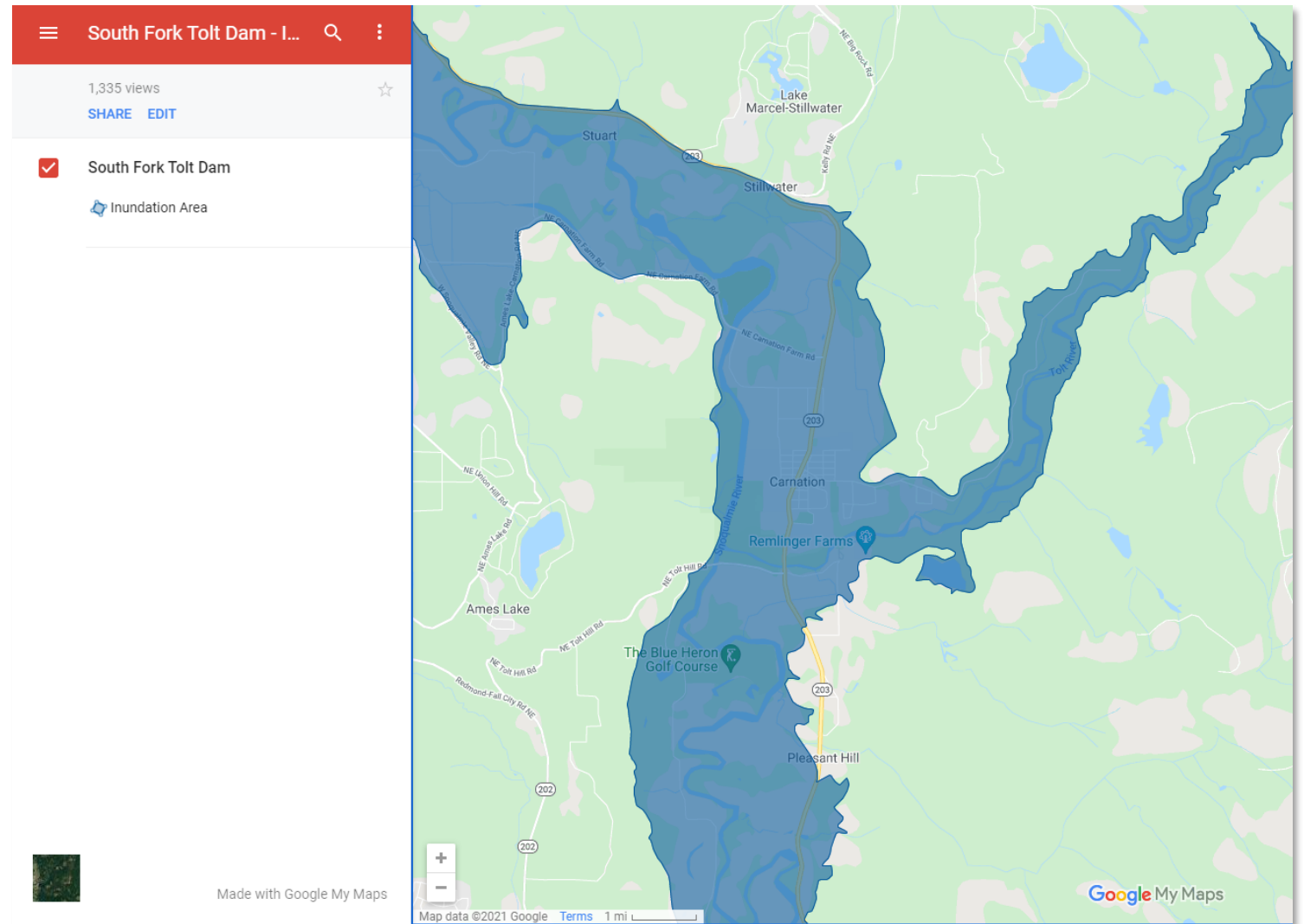
*206-205-4027*





# South Fork Tolt Dam – Inundation Map

- [kingcounty.gov/dams](https://kingcounty.gov/dams)
- Working to finalize evacuation maps
- Public outreach material development





Get notified by:

- Text
- Call
- Email

Signup at:

[www.kingcounty.gov/alert](http://www.kingcounty.gov/alert)

or

Text "ALERTKCC" to 99441

or

Follow the QR code



# Questions?

[kingcounty.gov/dams](http://kingcounty.gov/dams)  
[jaschneider@kingcounty.gov](mailto:jaschneider@kingcounty.gov)  
206-205-4027

# Project goals

- Replace and improve outdated siren and system components
- Add redundancy, resiliency, and reliability
- Add digital highway message signs and static evacuation route signs
- Listen and respond to community needs and suggestions
  - Adding more sirens
  - New digital highway message signs
  - New static evacuation route signs

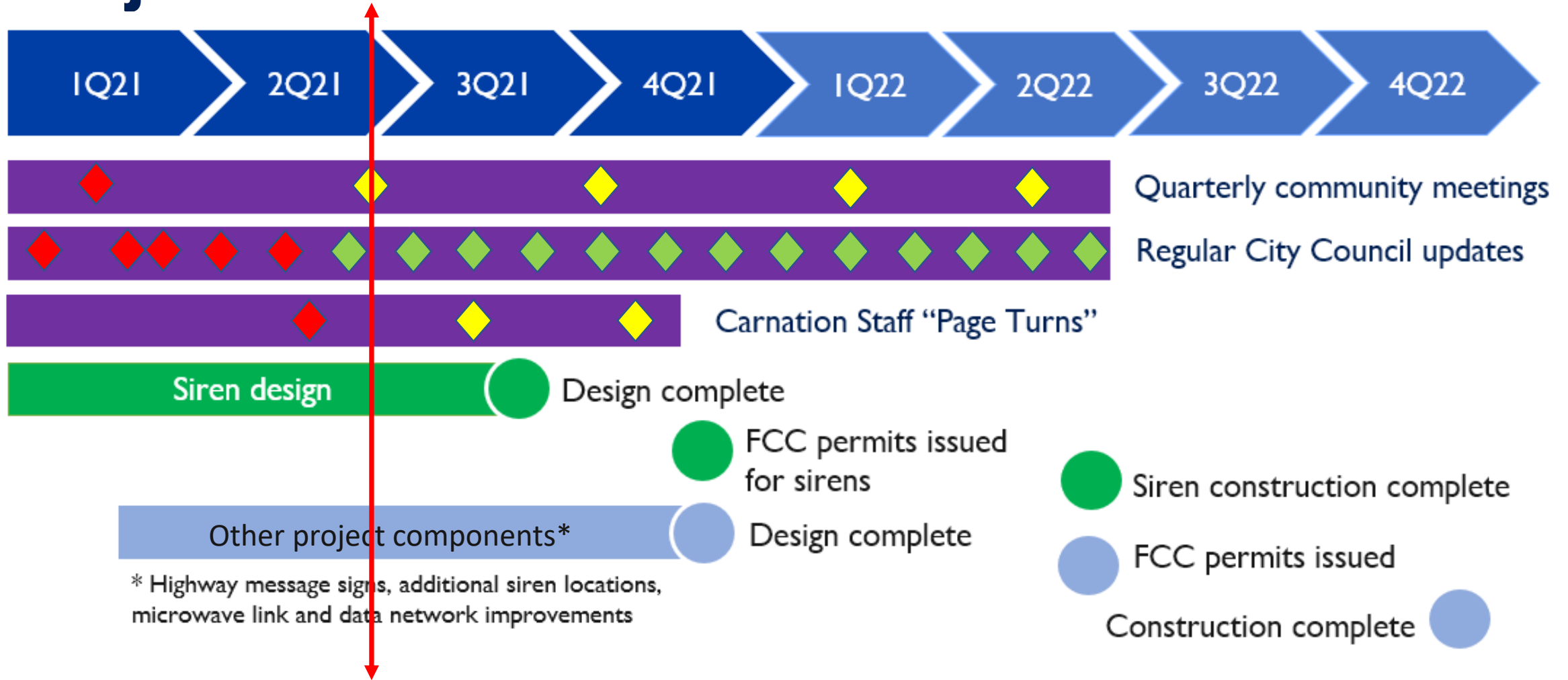


# Community feedback and actions

COMMUNITY INSIGHTS	ACTIONS	LEAD AGENCY
1 Additional signage to support evacuation	<ul style="list-style-type: none"><li>• New digital highway message signs</li><li>• New static evacuation route signs</li><li>• Along designated evacuation routes</li></ul>	Seattle Public Utilities
2 Warning system accessibility and reliability	<ul style="list-style-type: none"><li>• Three new sirens</li><li>• Verbal messages with multi-language capability</li><li>• Strobe lights on sirens</li></ul>	Seattle Public Utilities
3 Siren tone and verbal message flexibility	<ul style="list-style-type: none"><li>• Tone and verbal message options</li><li>• Verbal messages with multi-language capability</li><li>• Test vs emergency options</li></ul>	Seattle Public Utilities
4 System improvements as quickly as possible	<ul style="list-style-type: none"><li>• Expediting siren replacement</li></ul>	Seattle Public Utilities
5 Emergency preparedness	<ul style="list-style-type: none"><li>• Evacuation planning</li><li>• Education and awareness</li><li>• Partnership with county and city</li></ul>	King County Office of Emergency Management



# Project schedule



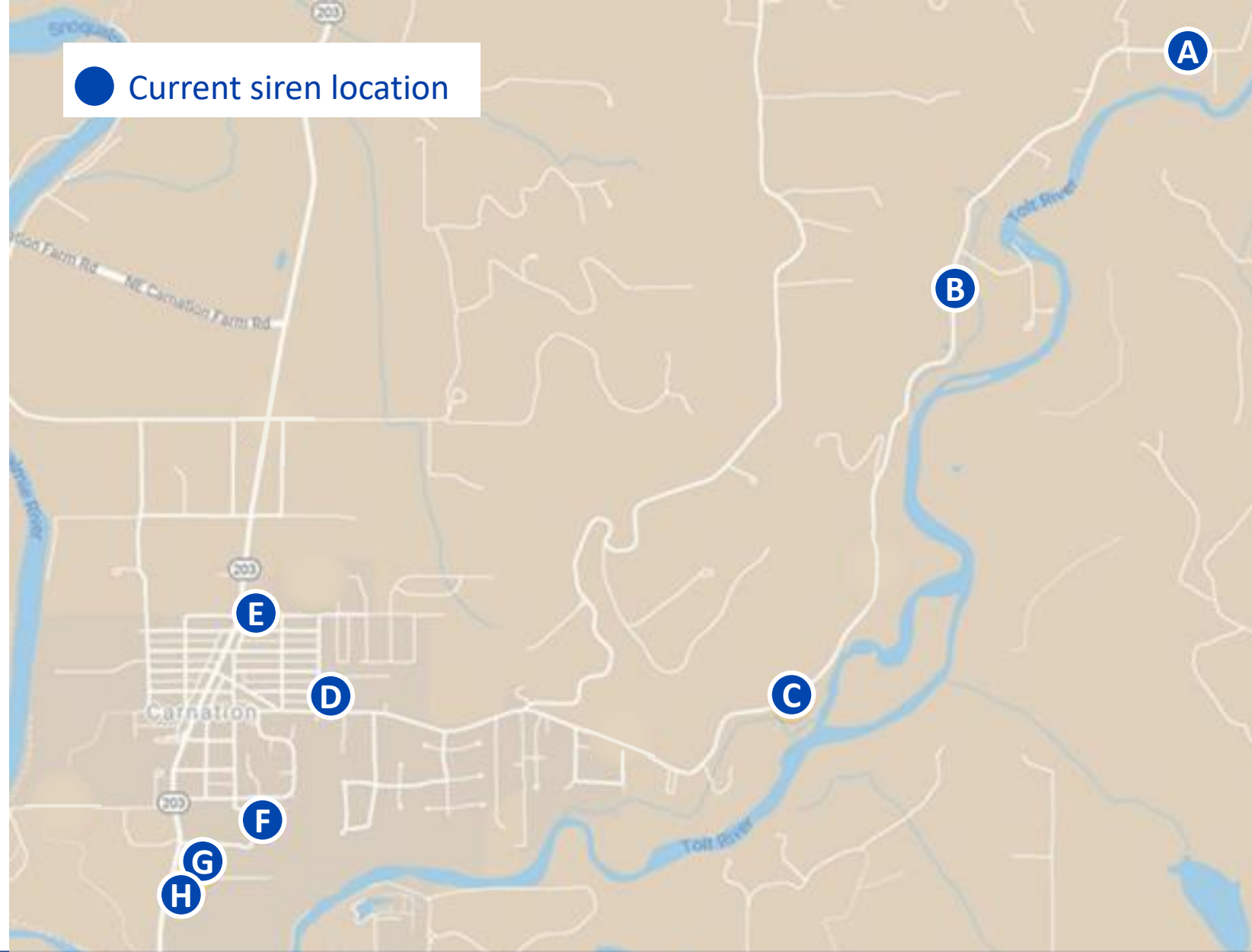


# Siren and signage improvements

- Replacing 8 sirens - 4 outdoor and 4 indoor
- Moving one outdoor siren and adding one siren in east Carnation
- Adding later in the project:
  - 2 outdoor and 1 indoor siren
  - 6 digital highway message signs
  - Static evacuation route signs along designated evacuation routes

# Siren locations

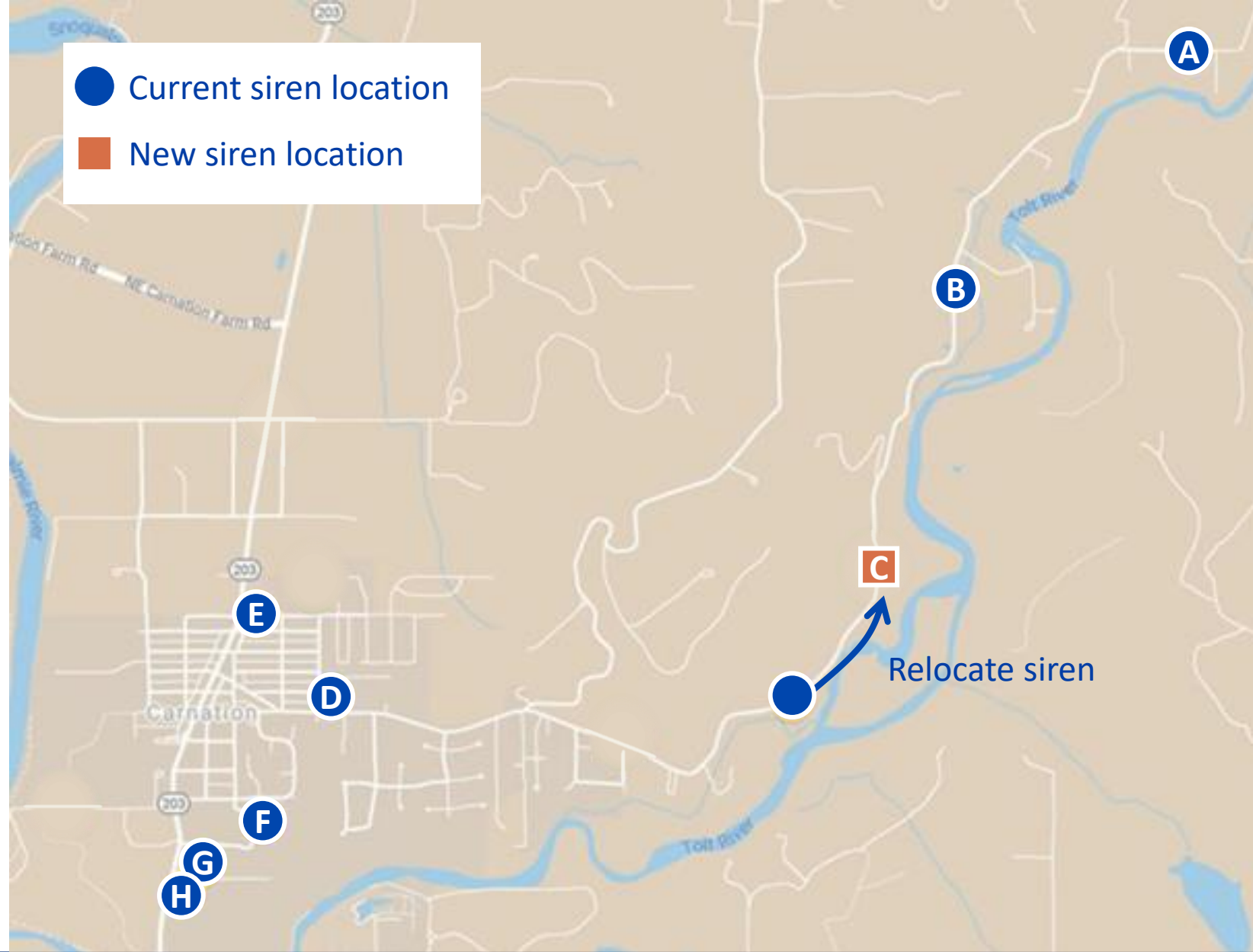
- A** NE 80<sup>th</sup> St
- B** Tolt River Rd NE & NE 69<sup>th</sup> St
- C** Tolt River Rd NE (4000 block)
- D** Entwistle St & Milwaukee St
- E** Carnation Elementary School
- F** Riverview School District Transportation Center
- G** Tolt Middle School
- H** Eastside Fire & Rescue Station 85





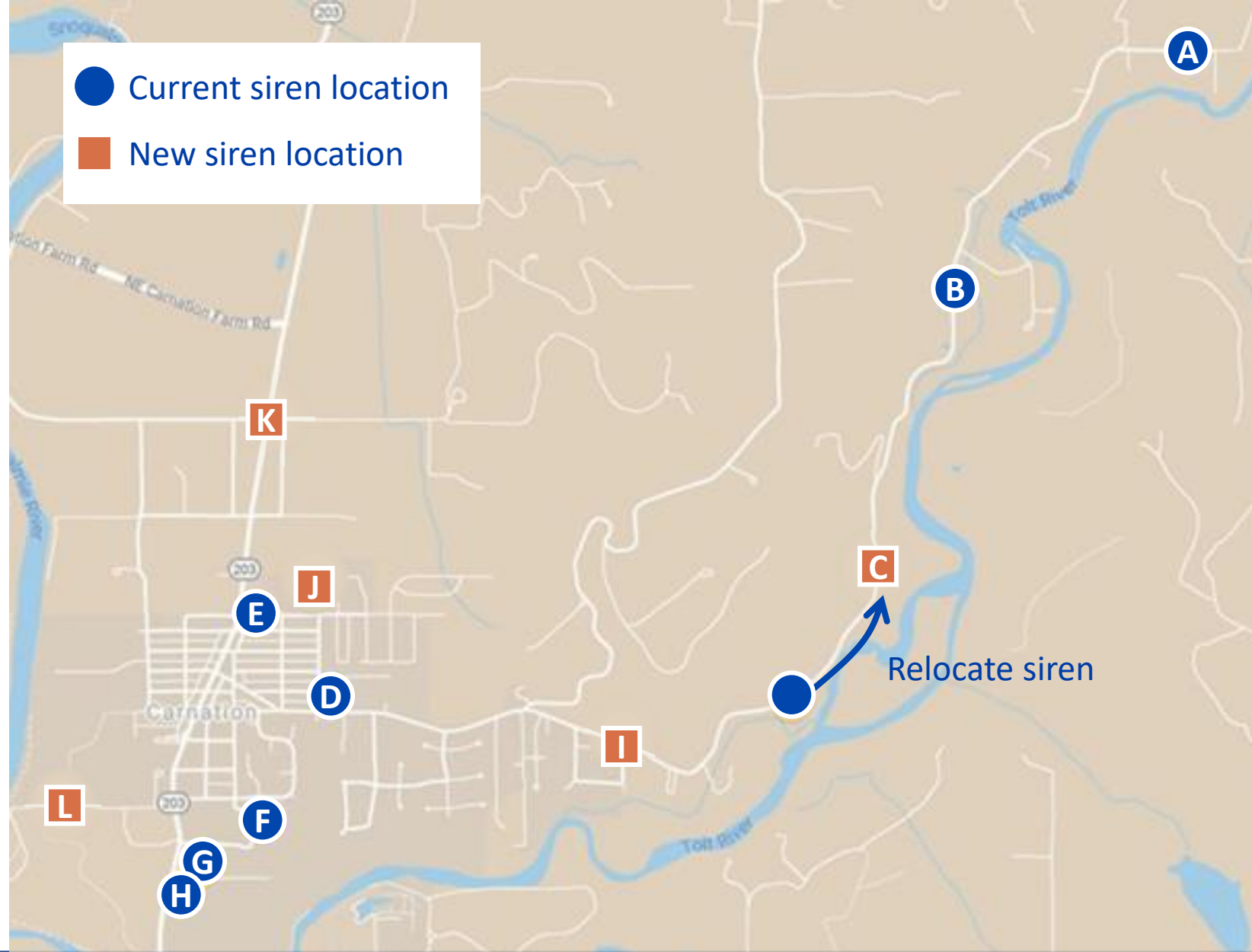
# Siren locations

- A** NE 80<sup>th</sup> St
- B** Tolt River Rd NE & NE 69<sup>th</sup> St
- C** Tolt River Rd NE (5000 block)
- D** Entwistle St & Milwaukee St
- E** Carnation Elementary School
- F** Riverview School District Transportation Center
- G** Tolt Middle School
- H** Eastside Fire & Rescue Station 85



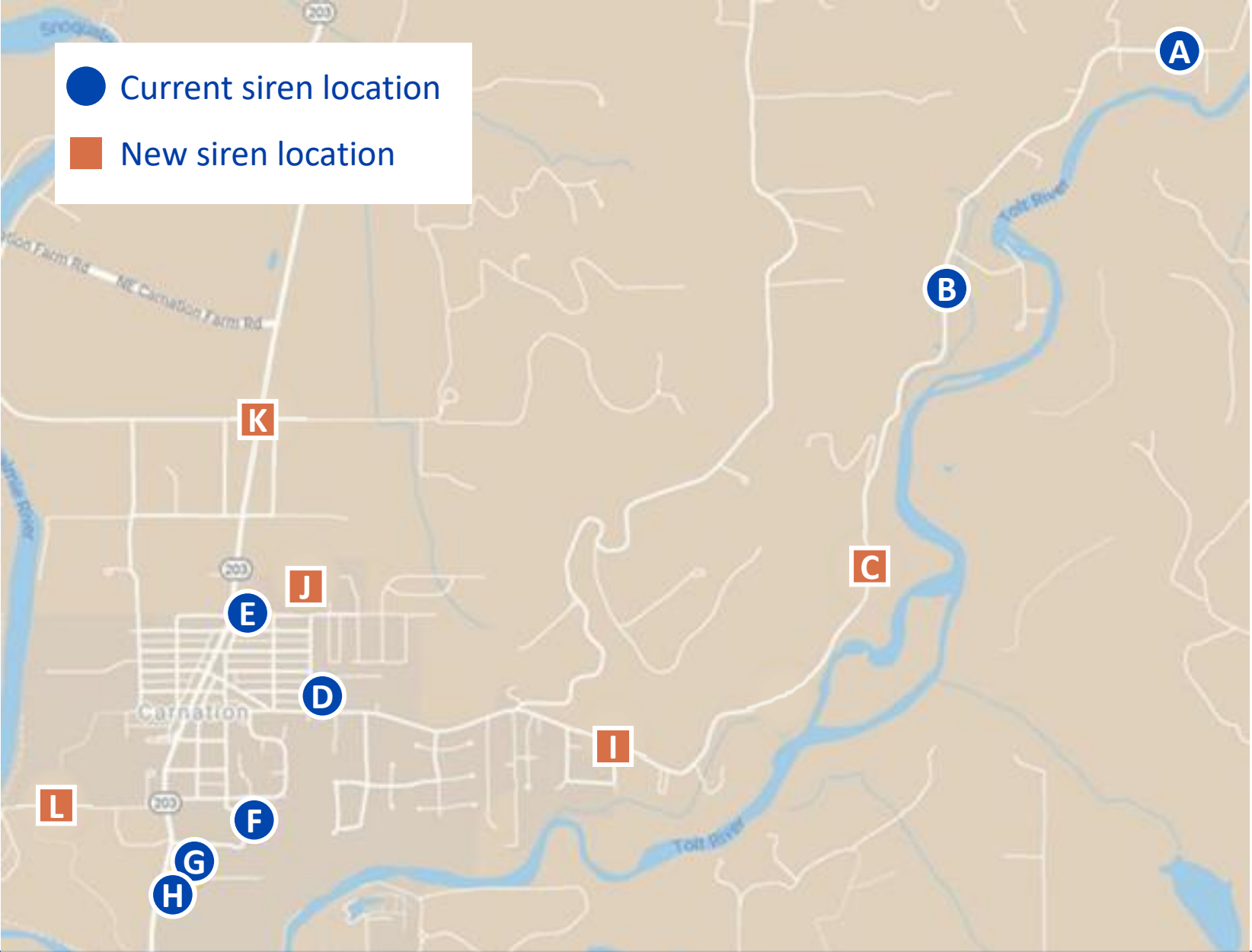
# Siren locations

- A** NE 80<sup>th</sup> St
- B** Tolt River Rd NE & NE 69<sup>th</sup> St
- C** Tolt River Rd NE (5000 block)
- D** Entwistle St & Milwaukee St
- E** Carnation Elementary School
- F** Riverview School District Transportation Center
- G** Tolt Middle School
- H** Eastside Fire & Rescue Station 85
- I** River's Edge Park
- J** Riverview Learning Center
- K** SR 203 & NE 60<sup>th</sup> St
- L** Tolt-MacDonald Park



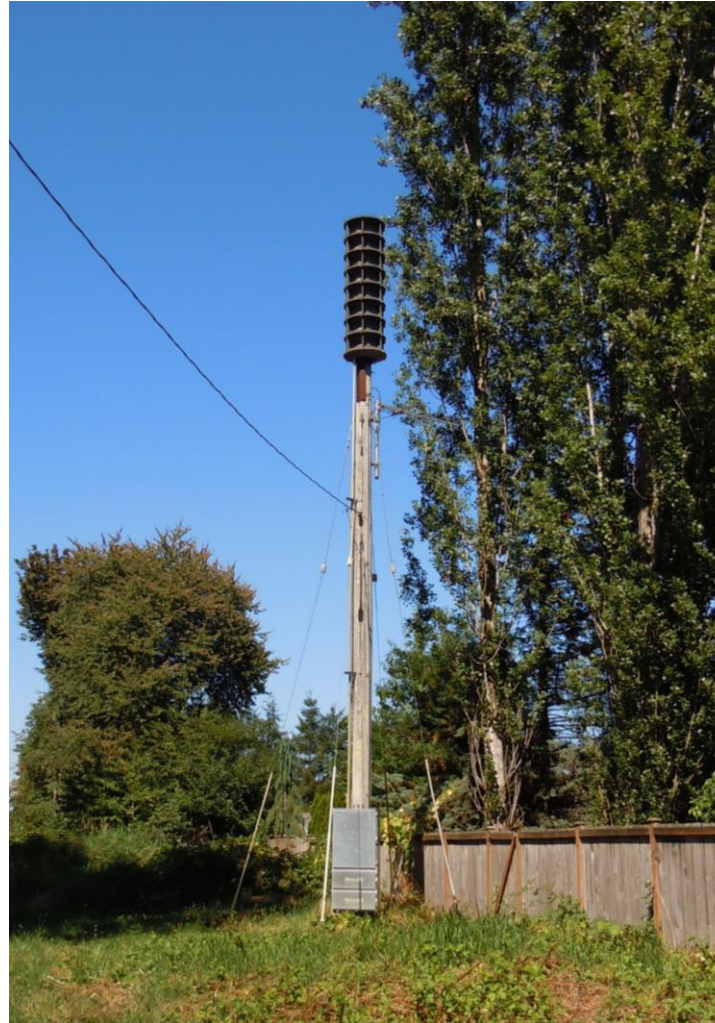
# Siren locations

- A** NE 80<sup>th</sup> St
- B** Tolt River Rd NE & NE 69<sup>th</sup> St
- C** Tolt River Rd NE (5000 block)
- D** Entwistle St & Milwaukee St
- E** Carnation Elementary School
- F** Riverview School District Transportation Center
- G** Tolt Middle School
- H** Eastside Fire & Rescue Station 85
- I** River's Edge Park
- J** Riverview Learning Center
- K** SR 203 & NE 60<sup>th</sup> St
- L** Tolt-MacDonald Park



# Siren images

- All sirens will be replaced or added with new technology



Current siren



New siren

# Sign examples

## Digital highway message sign example

- Tells people to evacuate in a dam break
- Brief, large text for drivers
- Pre-programmable

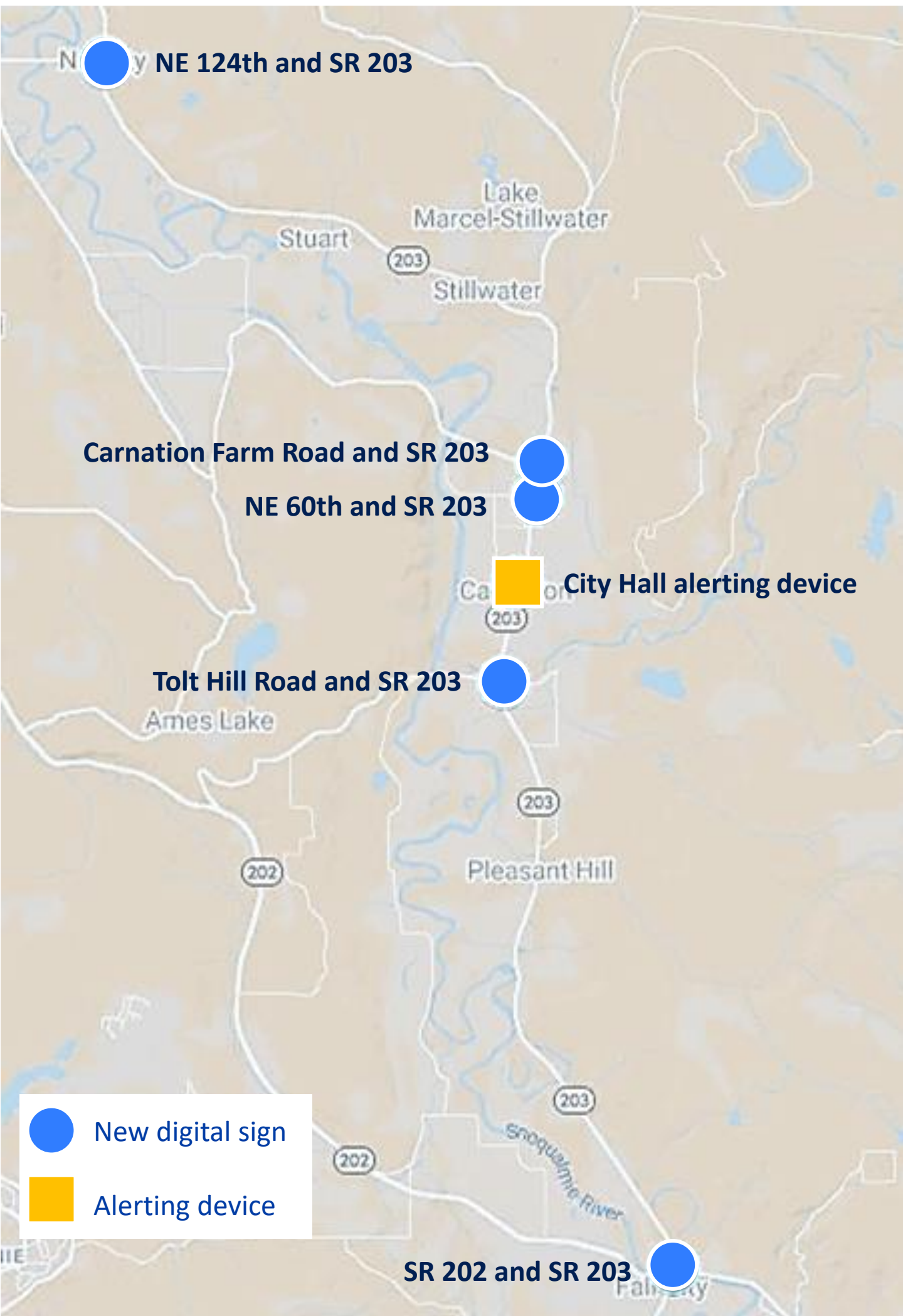



## Static evacuation sign example

- Marks evacuation route
- Not digital or programmable



# Planned digital highway message sign locations



-  New digital sign
-  Alerting device



# Next steps

- Next Council update 7/20
- Next community meeting late summer/early fall
- Continue siren design - focus on FCC permits
- Continue design for full system replacement



# Thank you!

## Stay informed:

- Project website: [seattle.gov/utilities/toltsirenproject](https://seattle.gov/utilities/toltsirenproject)
- ALERT King County: [kingcounty.gov/alert](https://kingcounty.gov/alert)
- Tolt inundation area map: [kingcounty.gov/dams](https://kingcounty.gov/dams)
- Josh Campbell, SPU Project Manager

[Josh.Campbell@seattle.gov](mailto:Josh.Campbell@seattle.gov)

(206) 684-5257







# Questions?

