

# GARBAGE REPORT

4th Quarter 2019

Seattle Public Utilities, Rates & Financial Planning

Report Date: January 31, 2020

Email: SPU\_SW\_Reports@seattle.gov

## Total City Tonnage Breakdown

<b>Self Haul</b>		
Q4 Self Haul Cars	854 Tons	5.8% increase vs. same period in 2018
2019 Cumulative Self Haul Cars:	3,991 Tons	7.9% increase vs. same period in 2018
Q4 Self Haul Trucks <sup>1</sup> :	22,768 Tons	0.3% decrease vs. same period in 2018
2019 Cumulative Self Haul Trucks:	97,516 Tons	0.4% increase vs. same period in 2018
2019 Cumulative Self Haul Cars & Trucks:	101,506 Tons	0.7% increase vs. same period in 2018
<b>Residential</b>		
Q4 Single Family:	14,725 Tons	0.9% increase vs. same period in 2018
2019 Cumulative Single Family:	58,191 Tons	0.8% increase vs. same period in 2018
Q4 Multi Family:	12,961 Tons	2.2% increase vs. same period in 2018
2019 Cumulative Multi Family:	51,176 Tons	2.8% increase vs. same period in 2018
Q4 Total Residential:	27,686 Tons	1.5% increase vs. same period in 2018
2019 Cumulative Total Residential:	109,367 Tons	1.8% increase vs. same period in 2018
<b>Commercial</b>		
Q4 Commercial:	33,766 Tons	0.1% increase vs. same period in 2018
2019 Cumulative Commercial:	134,816 Tons	2.1% decrease vs. same period in 2018
<b>Total Tons Collected</b>		
Q4 Total Collected:	85,074 Tons	0.5% increase vs. same period in 2018
2019 Cumulative Total Collected:	345,690 Tons	0.1% decrease vs. same period in 2018
<b>Total Tons Delivered To Arlington<sup>2</sup></b>		
Q4 Total Delivered:	89,615 Tons	3.1% increase vs. same period in 2018
2019 Cumulative Total Delivered:	361,762 Tons	2.1% increase vs. same period in 2018

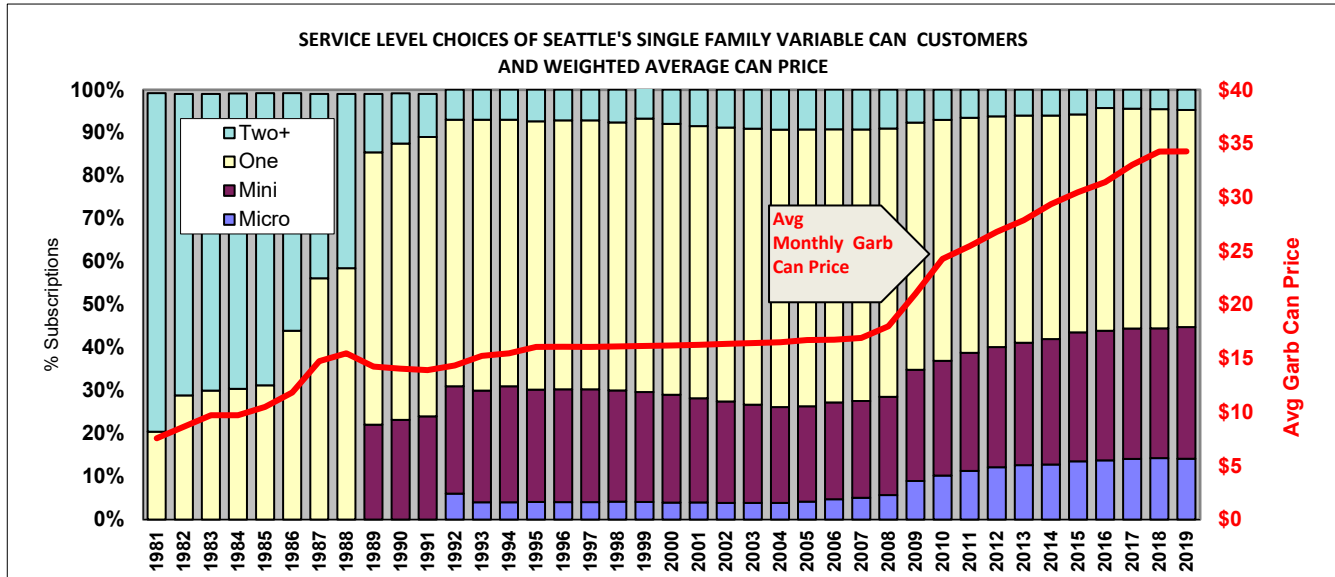
## Selected Garbage Customer Statistics – December 2019

<b>Single Family (4 or less households)</b>		
# SF Households	168,459 HHs	0.9% increase vs. same period in 2018
Average Monthly Pounds Garbage per HH	57.7 Lbs	0.1% decrease vs. same period in 2018
<b>Multi Family (5 or more households)</b>		
# MF Households	195,188 HHs	3.7% increase vs. same period in 2018
Average Monthly Pounds Garbage per HH	44.2 Lbs	1.7% decrease vs. same period in 2018

<sup>1</sup> An estimated 38% of the self-haul truck tons are commercial according to a waste stream sampling study conducted in 2012.

<sup>2</sup> Total tons collected not equal to total tons delivered due to operational factors.

## Variable Can Service Levels for Single Family Can Customers



	Micro	Mini	One	Two+
1981			18.00%	82.00%
1982			29.00%	71.00%
1985			30.00%	70.00%
1986			54.00%	46.00%
1987			62.00%	38.00%
1989		24.00%	64.00%	12.00%
1992	6.00%	25.00%	62.00%	7.00%
1993	4.00%	26.00%	63.00%	7.00%
1994	4.00%	27.00%	62.00%	7.00%
1995	4.06%	26.15%	62.44%	7.35%
1997	4.04%	26.23%	62.59%	7.14%
1998	4.16%	25.88%	62.35%	7.61%
1999	4.06%	25.60%	63.62%	7.72%
2000	3.93%	25.08%	63.02%	7.97%
2001	3.96%	24.24%	63.32%	8.49%
2002	3.85%	23.62%	63.72%	8.82%
2003	3.84%	22.85%	64.23%	9.08%
2004	3.86%	22.31%	64.54%	9.30%
2005	4.13%	22.22%	64.37%	9.28%
2006	4.72%	22.49%	63.57%	9.21%
2007	5.05%	22.50%	63.17%	9.28%
2008	5.66%	22.85%	62.45%	9.04%
2009	8.93%	25.89%	57.51%	7.67%
2010	10.21%	26.69%	56.08%	7.02%
2011	11.31%	27.45%	54.72%	6.53%
2012	12.13%	27.98%	53.68%	6.21%
2013	12.62%	28.49%	52.85%	6.04%
2014	12.75%	28.66%	52.58%	6.02%
2015	12.90%	29.29%	51.83%	5.98%
2016	13.99%	30.49%	51.22%	4.30%
2017	14.02%	30.52%	51.15%	4.31%
2018	14.26%	30.20%	51.01%	4.53%
2019	14.13%	30.62%	50.53%	4.72%

**Monthly Variable Can Rates**

Micro (12 gal)	\$24.25
Mini (19 gal)	\$29.70
One Can (32 gal)	\$38.65
Two Cans (64 gal)	\$77.25
Each Add'l Can	\$12.00

**Residential Dumpster Service**  
Most Common Monthly Rate\*  
\$243.78

\*This is the rate for a one cubic yard un-compacted container picked up once per week. Residential dumpster service rates vary based on the number and size of containers and the number of pickups per week

**Self Haul Rates**

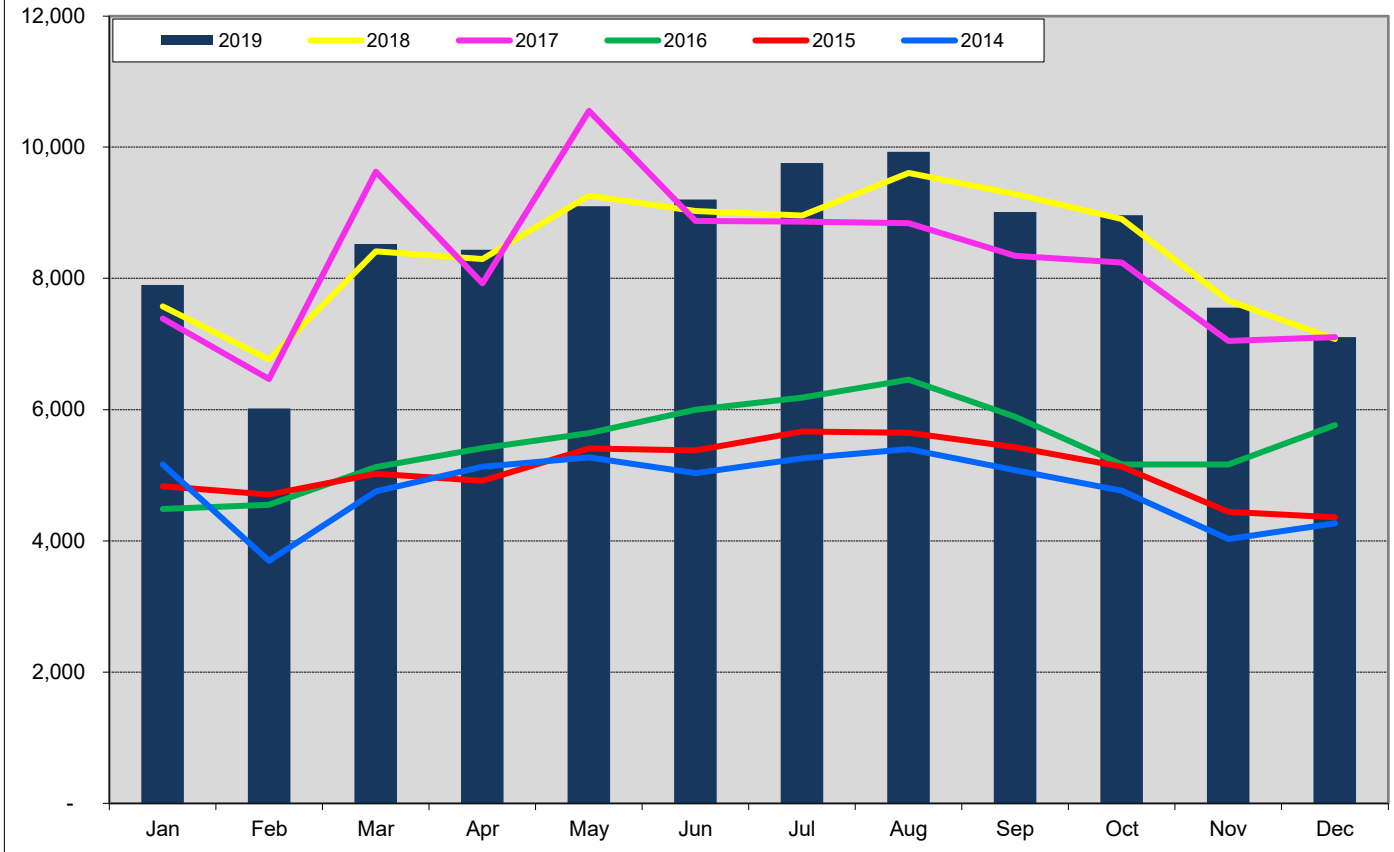
Cars:	\$30 per trip
Trucks*:	\$145.00 per ton (\$30.00 minimum)

\*Vans & pickup trucks pay the per ton truck rate.

**CITY OF SEATTLE GARBAGE TONNAGE REPORT**

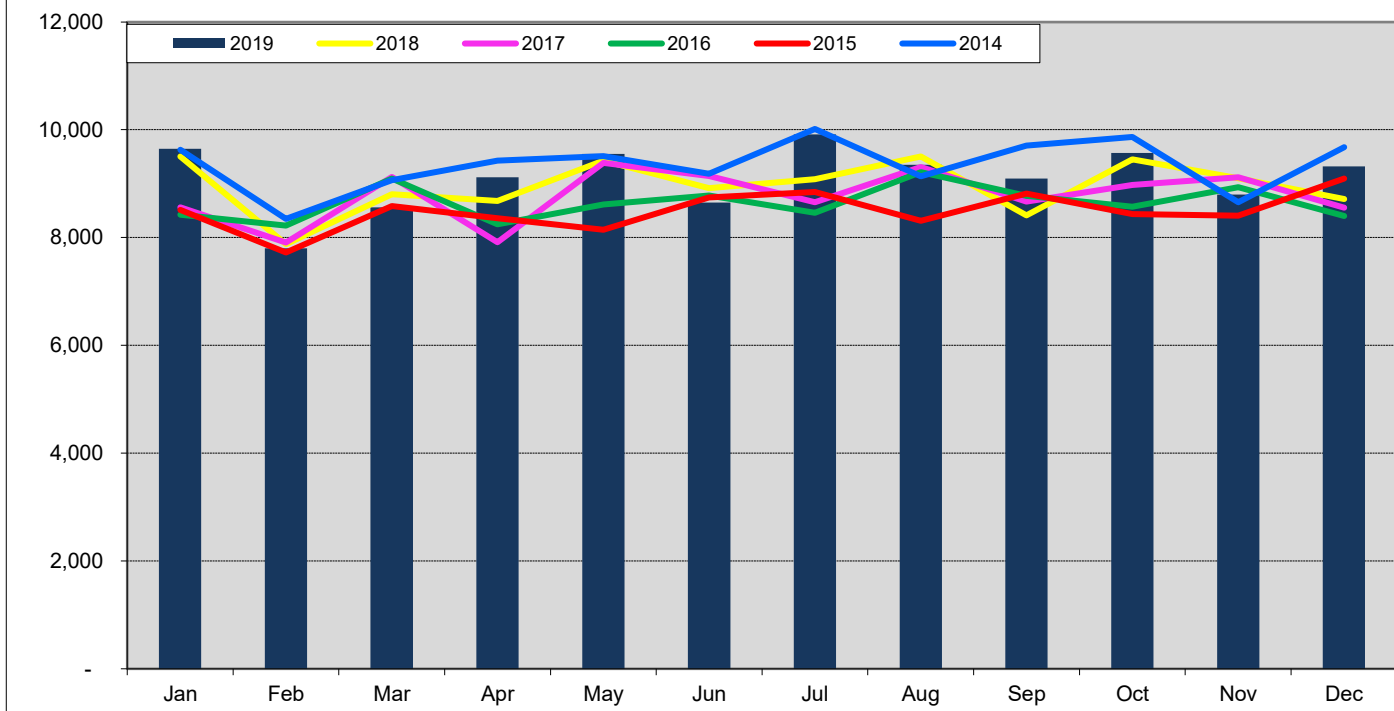
		SELF HAUL		RESIDENTIAL								COMMERCIAL GARBAGE						GRAND								
		Self Haul <sup>23</sup>		Recology/ CleanScapes <sup>19</sup>		Waste Management		TOTALS				Recology/Cleanscapes			Rabanco			Waste Management		TOTAL	TOTAL					
Year	Month	Cars <sup>2</sup>	Trucks	Self Haul	City Stations	Eastmont/ Lander <sup>20</sup>	City Stations	East- mont	Single Family	SF <sup>24</sup> Lbs/HH	Multi Family	MF <sup>24</sup> Lbs/HH	Total Residential	City Stations	East- mont	Recol- ogy <sup>22</sup>	City Stations	Lander <sup>21</sup>	East- mont	City Stations	Lander	East- mont	COMMERCIAL	GARBAGE		
2018	1	240	7,331	7,571	4,899	0	4,609	0	5,127	62	4,381	49	9,508	5,482	0	88		937		5,567	539		12,613	29,692		
2018	2	225	6,542	6,768	4,074	1	3,805	0	4,192	51	3,687	41	7,879	4,720	3	135		712		4,259	429		10,257	24,904		
2018	3	291	8,121	8,412	4,576	0	4,229	0	4,733	57	4,073	45	8,805	5,275	0	26		787		4,830	543		11,461	28,678		
2018	4	305	7,991	8,296	4,528	0	4,150	0	4,605	55	4,073	45	8,678	5,201	0	136		771		4,712	498		11,318	28,292		
2018	5	378	8,882	9,260	4,888	0	4,534	2	5,122	61	4,303	47	9,425	5,546	0	80		822		4,970	462		11,879	30,564		
2018	6	363	8,664	9,027	4,663	0	4,255	0	4,817	58	4,101	45	8,918	5,429	0	169		774		4,703	532		11,608	29,553		
2018	7	393	8,565	8,958	4,636	28	4,050	368	4,916	59	4,167	45	9,082	5,250	303	145		813		4,395	914		11,820	29,860		
2018	8	356	9,255	9,611	4,934	0	4,573	0	5,103	61	4,404	47	9,507	5,765	0	89		838		5,170	472		12,334	31,452		
2018	9	340	8,943	9,283	4,428	0	3,985	1	4,519	54	3,895	42	8,413	5,037	0	157		731		4,346	474		10,745	28,441		
2018	10	298	8,606	8,904	4,955	0	4,494	3	5,033	60	4,419	47	9,452	5,584	0	31		820		5,042	435		11,913	30,269		
2018	11	248	7,413	7,661	4,726	0	4,377	0	4,915	59	4,188	45	9,102	5,175	0	107		823		4,574	455		11,134	27,897		
2018	12	261	6,815	7,076	4,530	0	4,185	0	4,644	56	4,071	43	8,715	5,161	0	108		834		4,579	440		11,122	26,913		
2019	1	283	7,617	7,900	5,026	0	4,623	0	5,221	62	4,428	47	9,649	5,264	0	168		882		4,828	489		11,631	29,180		
2019	2	228	5,790	6,019	4,064	0	3,734	0	4,152	50	3,646	38	7,798	4,508	1	111		661		3,855	402		9,537	23,354		
2019	3	372	8,153	8,525	4,475	0	4,079	6	4,567	54	3,993	42	8,560	5,035	0	109		734		4,417	527		10,821	27,906		
2019	4	320	8,118	8,438	4,784	0	4,270	66	4,826	58	4,295	45	9,121	5,197	0	143		761		4,807	486		11,394	28,953		
2019	5	398	8,702	9,100	4,995	0	4,554	0	5,110	61	4,439	46	9,549	5,460	0	148		796		4,797	564		11,765	30,414		
2019	6	395	8,806	9,200	4,591	0	4,058	0	4,573	54	4,076	42	8,649	5,391	0	112		719		4,388	554		11,165	29,014		
2019	7	386	9,372	9,758	5,220	0	4,696	0	5,246	62	4,670	48	9,916	5,642	0	59		819		4,886	440		11,846	31,521		
2019	8	396	9,535	9,931	4,904	4	4,435	5	4,953	59	4,394	45	9,347	5,478	1	135		799		4,810	447		11,670	30,948		
2019	9	358	8,656	9,014	4,802	0	4,289	1	4,818	57	4,275	44	9,092	5,212	0	111		806		4,542	549		11,220	29,326		
2019	10	298	8,663	8,961	5,047	0	4,522	0	5,083	60	4,486	46	9,568	5,496	0	28		825		4,819	523		11,692	30,221		
2019	11	279	7,276	7,555	4,646	1	4,153	0	4,661	55	4,139	42	8,800	5,043	8	74		783		4,387	512		10,808	27,162		
2019	12	278	6,829	7,106	4,921	0	4,396	0	4,981	59	4,337	44	9,318	5,113	0	59		886		4,760	450		11,267	27,691		
Total 2019		3,991	97,516	101,506	57,476	5	51,807	79	58,191	58	51,176	44	109,367	62,839	10	1,257		9,471		55,296	5,944		134,816	345,690		
Total 2018		3,699	97,127	100,826	55,836	29	51,247	374	57,725	58	49,760	45	107,485	63,626	306	1,270		9,662		57,148	6,192		138,204	346,515		
Total 2017		3,483	95,808	99,291	54,364	0	50,947	4	56,541	57	48,773	46	105,315	65,197	0	1,439		9,697		57,604	5,381		139,317	343,923		
Total 2016		2,236	63,604	65,840	53,258	0	50,437	40	54,298	55	49,437	55	103,736	65,528	0	1,746		9,169		56,426	5,860		138,729	308,305		
Total 2015		2,190	58,748	60,938	52,231	21	49,713	8	52,529	53	49,443	57	101,972	66,831	38	5,870		5,884		55,394	5,539		139,557	302,467		
Total 2014		2,487	55,360	57,847	56,344	230	55,396	241	59,772	61	52,439	63	112,211	66,888	2,431	3,378		5,680		55,804	5,275		139,457	309,515		
Total 2013		6,569	67,450	74,018	52,050	3,667	50,889	4,233	60,302	62	50,537	63	110,838	35,955	31,556			5,623		33,975	25,233		132,343	317,199		
Total 2012		6,285	64,190	70,474	52,651	3,007	53,052	2,709	60,906	62	50,514	65	111,420	41,082	27,298			5,883		38,527	21,300		134,089	315,984		
Total 2011		6,206	64,827	71,033	54,180	2,320	54,935	1,339	62,779	64	49,993	65	112,773	41,090	26,773			5,519		39,170	22,984		135,536	319,342		
Total 2010		6,230	73,062	79,292	53,799	3,587	54,995	1,715	64,309	66	49,788	66	114,097	37,844	32,486			2,742		42,042	27,066		142,180	335,569		
Total 2009		6,354	75,210	81,565	57,760	4,730	52,243	3,992					118,725	31,939	24,020			13,703	4,206	9,278	40,627	51	27,574	151,398	351,688	
Total 2008		5,750	85,144	90,894	72,125	7,324	47,111	660					127,219					63,903	15,523	38,414	31,292	0	27,658	176,791	394,904	
Total 2007		6,755	100,343	107,098	73,433	9,827	49,918	248					133,426					55,453	77,257	693	32,858	18,262	14,495	199,018	439,542	
Total 2006		7,711	95,717	103,428	72,436	10,551	49,718	969					133,674					59,890	76,187		33,239	27,451	4,437	201,205	438,308	
Total 2005		7,487	93,011	100,499	78,520	4,390	51,638	9					134,557					59,107	81,223		36,561	24,297	4,658	205,846	440,902	
Total 2004		7,723	92,043	99,766	77,887	8,398	53,125	3,118					142,527					32,492	114,374		20,547	14,329	34,370	216,112	458,405	
Total 2003		7,386	93,845	101,232	83,943	3,596	54,147	1,845					143,532					28,843	113,688		999		69,717	213,247	458,010	
Total 2002		7,353	95,537	102,891	86,806	406	55,145	554					142,910					31,135	112,409		8,237		65,413	217,195	462,996	
Total 2001		6,818	95,487	102,305	87,793	539	56,216	9					144,557						145,933					82,472	228,405	475,268
Total 2000		6,323	95,560	101,883	77,300	869	67,309	368					145,845						136,695					91,722	228,417	476,145
Total 1999 <sup>3</sup>		6,989	97,378	104,367	46,595		101,123						147,718						139,396					85,952	225,348	477,433
Total 1998		16,883	81,136	98,019	43,621	2,230	100,083						145,934						133,429					80,217	213,646	457,598
Total 1997		15,750	81,396	97,146	47,290	16	100,632						147,938						129,617					79,053	208,670	453,754
Total 1996 <sup>12</sup>		13,777	70,091	83,868	47,784	962	95,543						144,289						123,521					71,448	194,969	423,127
Total 1995 <sup>5</sup>		13,279	71,208	84,487	48,626	572	100,926						150,124						121,121					75,581	196,702	431,313
Total 1994		13,064	74,291	87,354	46,922	2,043	101,123						150,089						119,623					75,144	194,767	432,210
Total 1993		8,665	76,853	85,518	47,269		96,859						144,127						126,676					73,915	200,591	430,236
Total 1992		8,178	80,742	88,920	45,475		96,679						142,154						125,596					68,742	194,338	425,412
Total 1991		7,947	68,576	76,523	44,228		96,494						140,722						147,868					74,389	222,257	439,502
Total 1990 <sup>3</sup>		7,253	73,939	81,192	44,249		96,278						140,528						157,664					78,461	236,125	457,845
Total 1989 <sup>4,5</sup>		6,919	58,720	65,639	45,338		97,884						143,222						121,029					75,513	196,542	405,403
Total 1988 <sup>6</sup>		11,810	75,557	87,367	96,405		93,564						179,968													

### CITY OF SEATTLE SELF HAUL TO CITY OWNED STATIONS Self Haul Cars and Trucks Tons

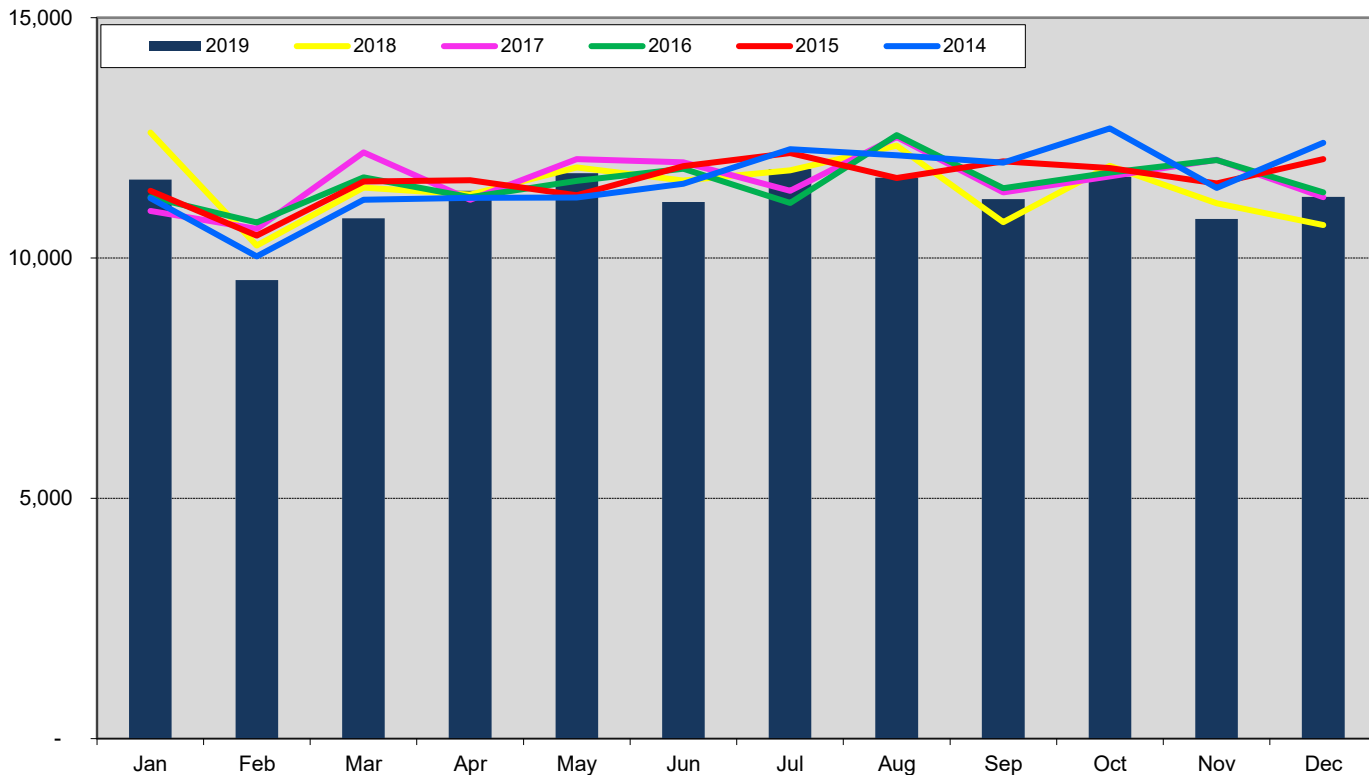


The North Transfer Station was closed from January 2014 - November 2016 for a rebuild.

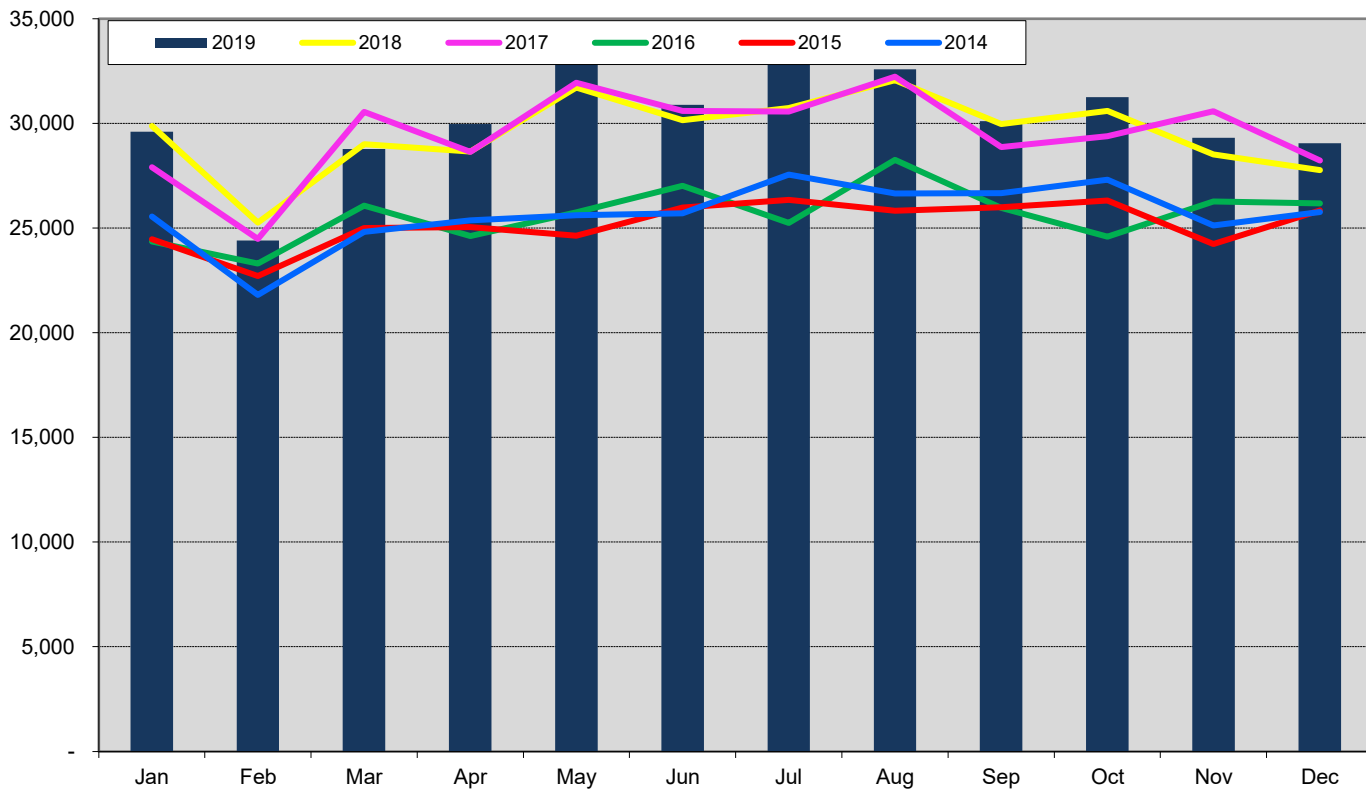
### CITY OF SEATTLE RESIDENTIAL COLLECTION Total City Tons



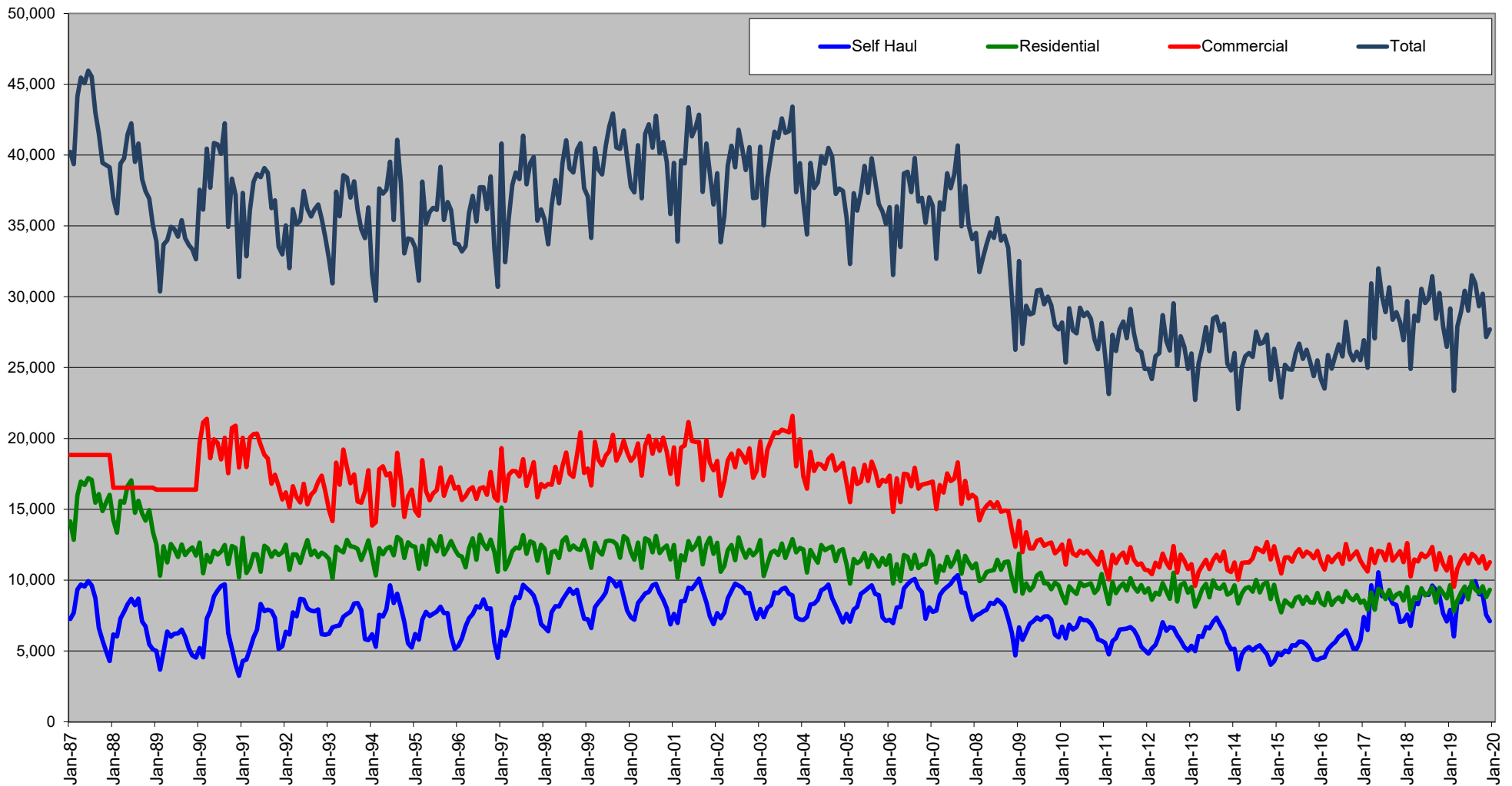
### CITY OF SEATTLE Commercial Garbage Total Tons Collected



### CITY OF SEATTLE TOTAL OUTBOUND TONS Total Tons Delivered to Arlington Landfill



# City of Seattle Garbage Disposal



Monthly commercial tonnage for 1987-1989 estimated from annual data.