

GARBAGE REPORT

4th Quarter 2014

Seattle Public Utilities, Economic Services Section

Report Date: March 3, 2015

Phone: (206) 684-4143

Total City Tonnage Breakdown

Self Haul¹

Q4 Self Haul Cars ²	458 Tons	67.1%	decrease vs. same period in 2013
2014 Cumulative Self Haul Cars:	2,487 Tons	62.1%	decrease vs. same period in 2013
Q4 Self Haul Trucks ³ :	12,604 Tons	19.6%	decrease vs. same period in 2013
2014 Cumulative Self Haul Trucks:	55,360 Tons	17.9%	decrease vs. same period in 2013
2014 Cumulative Self Haul Cars & Trucks:	57,847 Tons	21.8%	decrease vs. same period in 2013

Residential

Q4 Single Family:	14,961 Tons	0.6%	decrease vs. same period in 2013
2014 Cumulative Single Family:	59,772 Tons	0.9%	decrease vs. same period in 2013
Q4 Multi Family:	13,236 Tons	3.9%	increase vs. same period in 2013
2014 Cumulative Multi Family:	52,439 Tons	3.8%	increase vs. same period in 2013
Q4 Total Residential:	28,197 Tons	1.4%	increase vs. same period in 2013
2014 Cumulative Total Residential:	112,211 Tons	1.2%	increase vs. same period in 2013

Commercial

Q4 Commercial:	36,542 Tons	9.8%	increase vs. same period in 2013
2014 Cumulative Commercial:	139,457 Tons	5.4%	increase vs. same period in 2013

Total Tons Collected

Q4 Total Collected:	77,801 Tons	0.5%	decrease vs. same period in 2013
2014 Cumulative Total Collected:	309,515 Tons	2.4%	decrease vs. same period in 2013

Total Tons Delivered To Arlington⁴

Q4 Total Delivered:	78,194 Tons	0.2 %	decrease vs. same period in 2013
2014 Cumulative Total Delivered:	307,944 Tons	3.3 %	decrease vs. same period in 2013

Selected Statistics

Average Monthly Pounds Garbage Collected per Household YTD

Garbage Can Customers: (Single Family)	63 lbs/hh	(163,801 hhs)	1.0% decrease vs same period in 2013
Garbage Dumpster Customers (Multi Family)	63 lbs/hh	(142,035 hhs)	1.6% decrease vs same period in 2013

Recycling & Disposal Station Self Haul Garbage Rates⁵

Cars: \$30.00 per trip Trucks: \$145.00 per ton (\$30.00 minimum)

¹ There have been fewer Self Haul trips due to the closure of the North Recycle & Disposal Station on Jan 20, 2014 for a rebuild.

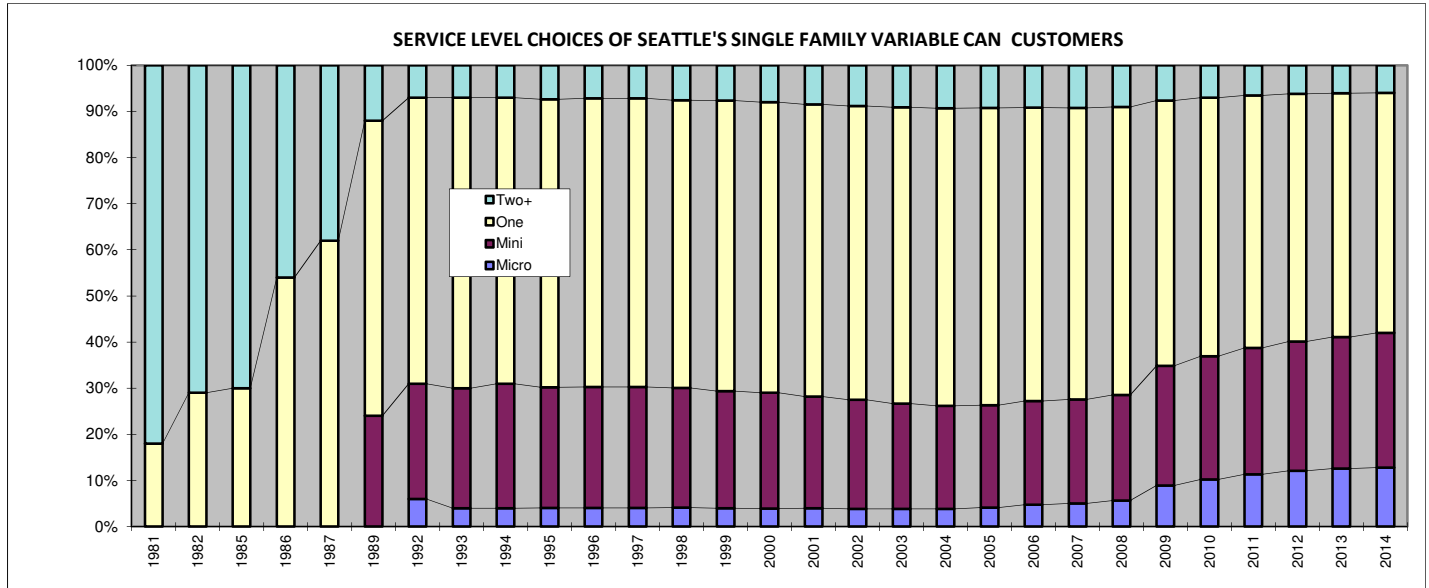
² Beginning Feb 2014 weighed car tons are used. Average car weights were 280 pounds per car for Q1 2014. Prior to Feb 2014, car tons calculated based on 480.8 pounds per car for 2009 to present according to a waste composition study done from Jan-Dec 2008.

³ An estimated 38% of the self-haul truck tons are commercial according to a waste stream sampling study conducted in 2012.

⁴ Total tons collected not equal to total tons delivered due to operational factors.

⁵ Vans & pickup trucks pay the per ton truck rate.

Variable Can Customer Service Levels¹



	Micro	Mini	One	Two+
1981			18.00%	82.00%
1982			29.00%	71.00%
1985			30.00%	70.00%
1986			54.00%	46.00%
1987			62.00%	38.00%
1989		24.00%	64.00%	12.00%
1992	6.00%	25.00%	62.00%	7.00%
1993	4.00%	26.00%	63.00%	7.00%
1994	4.00%	27.00%	62.00%	7.00%
1995	4.06%	26.15%	62.44%	7.35%
1996	4.04%	26.23%	62.59%	7.14%
1997	4.04%	26.23%	62.59%	7.14%
1998	4.16%	25.88%	62.35%	7.61%
1999	4.06%	25.60%	63.62%	7.72%
2000	3.93%	25.08%	63.02%	7.97%
2001	3.96%	24.24%	63.32%	8.49%
2002	3.85%	23.62%	63.72%	8.82%
2003	3.84%	22.85%	64.23%	9.08%
2004	3.86%	22.31%	64.54%	9.30%
2005	4.13%	22.22%	64.37%	9.28%
2006	4.72%	22.49%	63.57%	9.21%
2007	5.05%	22.50%	63.17%	9.28%
2008	5.66%	22.85%	62.45%	9.04%
2009	8.93%	25.89%	57.51%	7.67%
2010	10.21%	26.69%	56.08%	7.02%
2011	11.31%	27.45%	54.72%	6.53%
2012	12.13%	27.98%	53.68%	6.21%
2013	12.62%	28.49%	52.85%	6.04%
2014	12.80%	29.17%	52.01%	6.01%

Monthly Variable Can Rates

Micro (12 gal)	\$19.45
Mini (19 gal)	\$23.85
One Can (32 gal)	\$31.05
Two Cans (64 gal)	\$62.10
Each Add'l Can	\$10.20

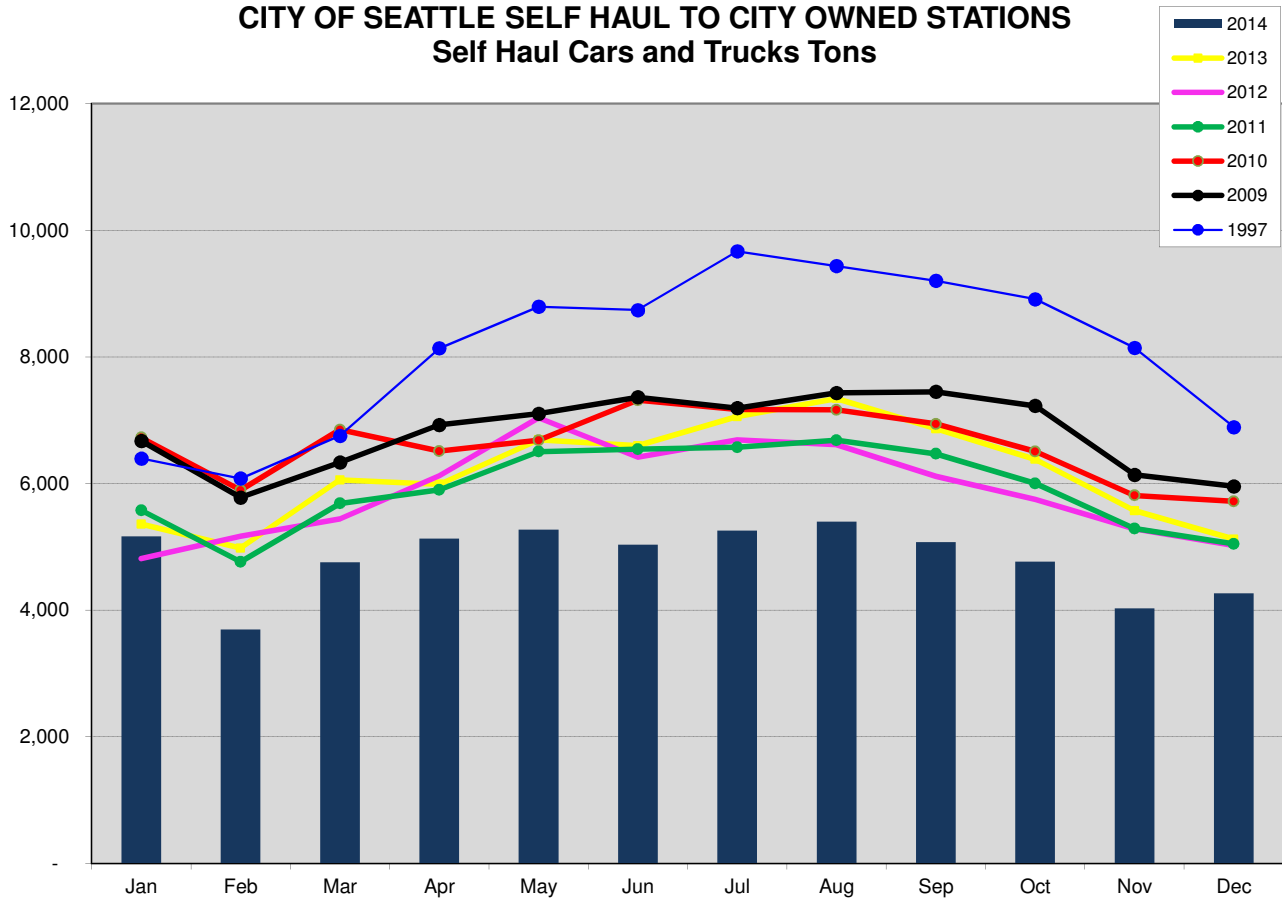
Residential Dumpster Service²

Most Common Monthly Rate
\$196.37

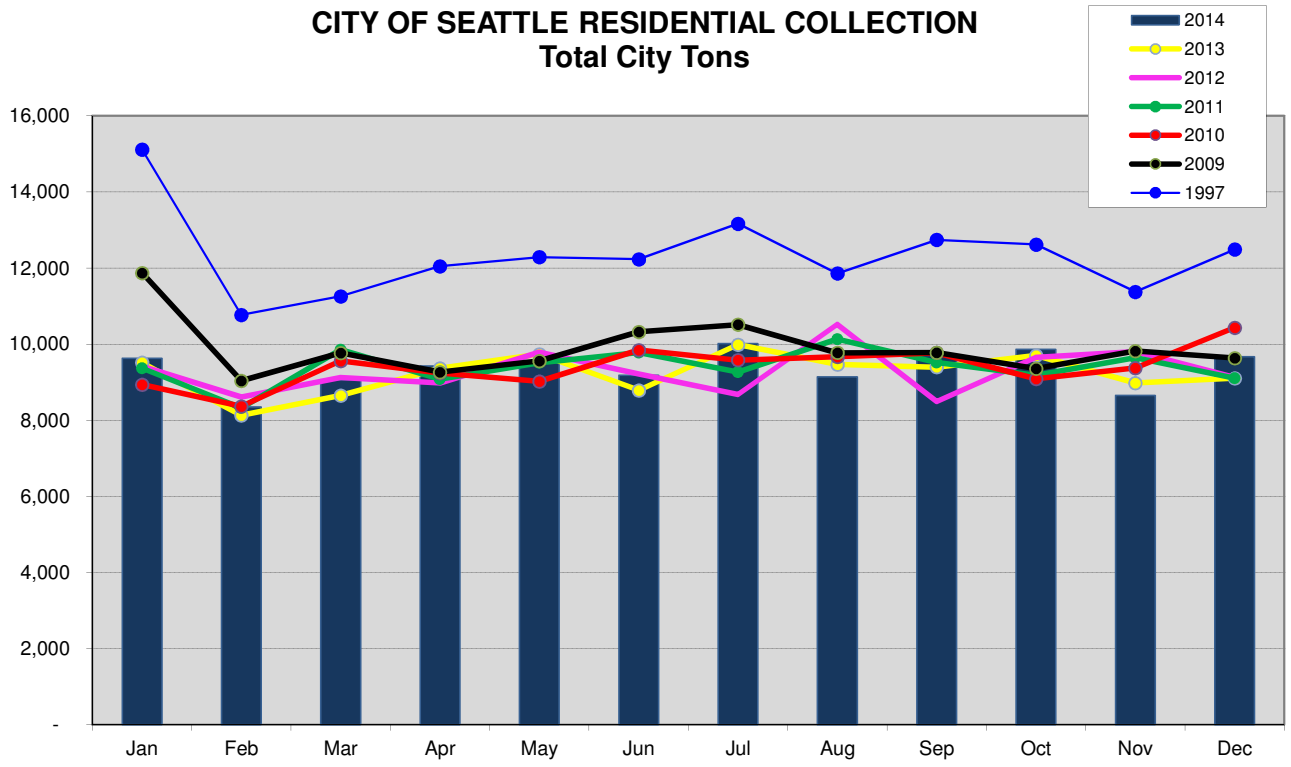
¹ Based on single-family customers only

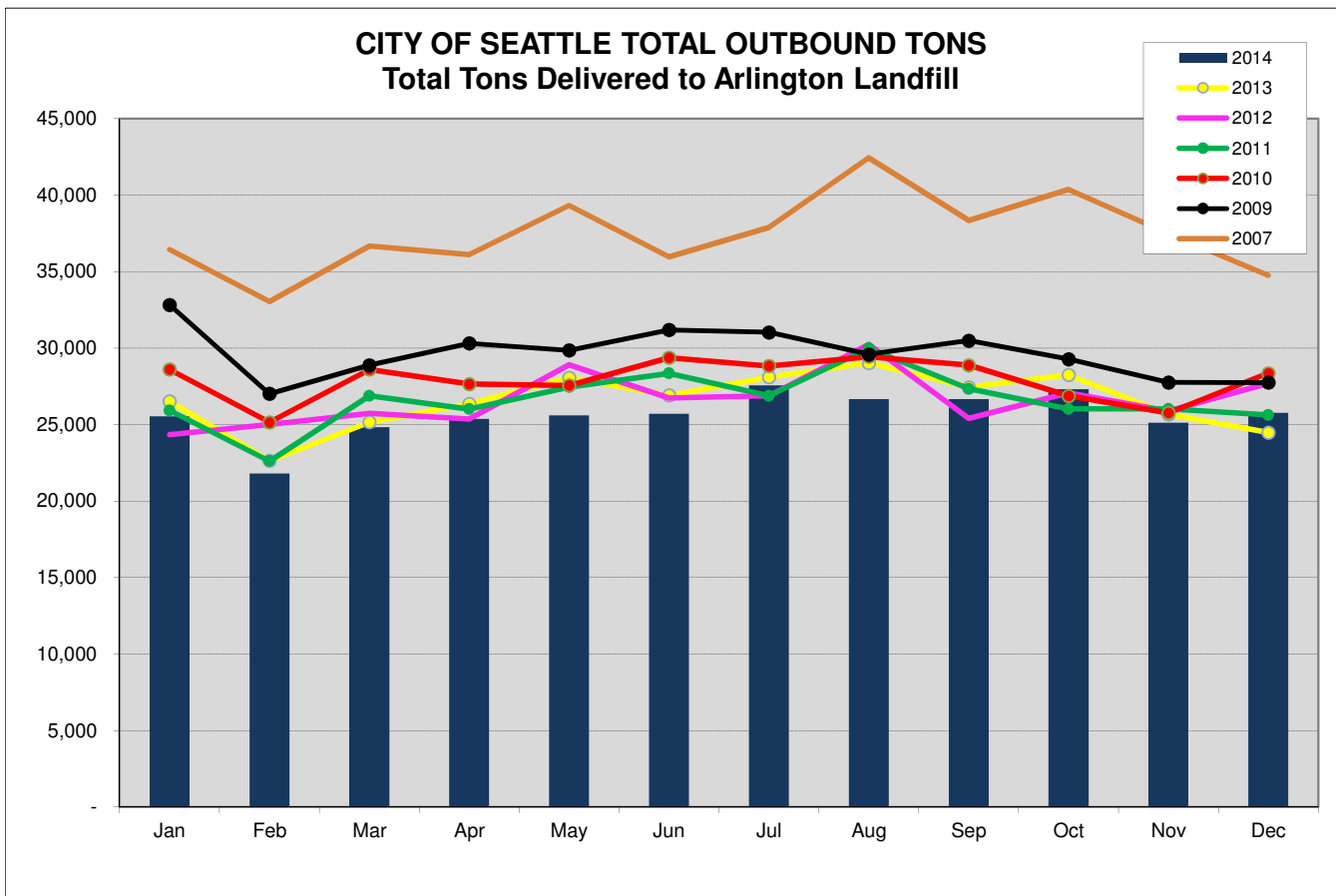
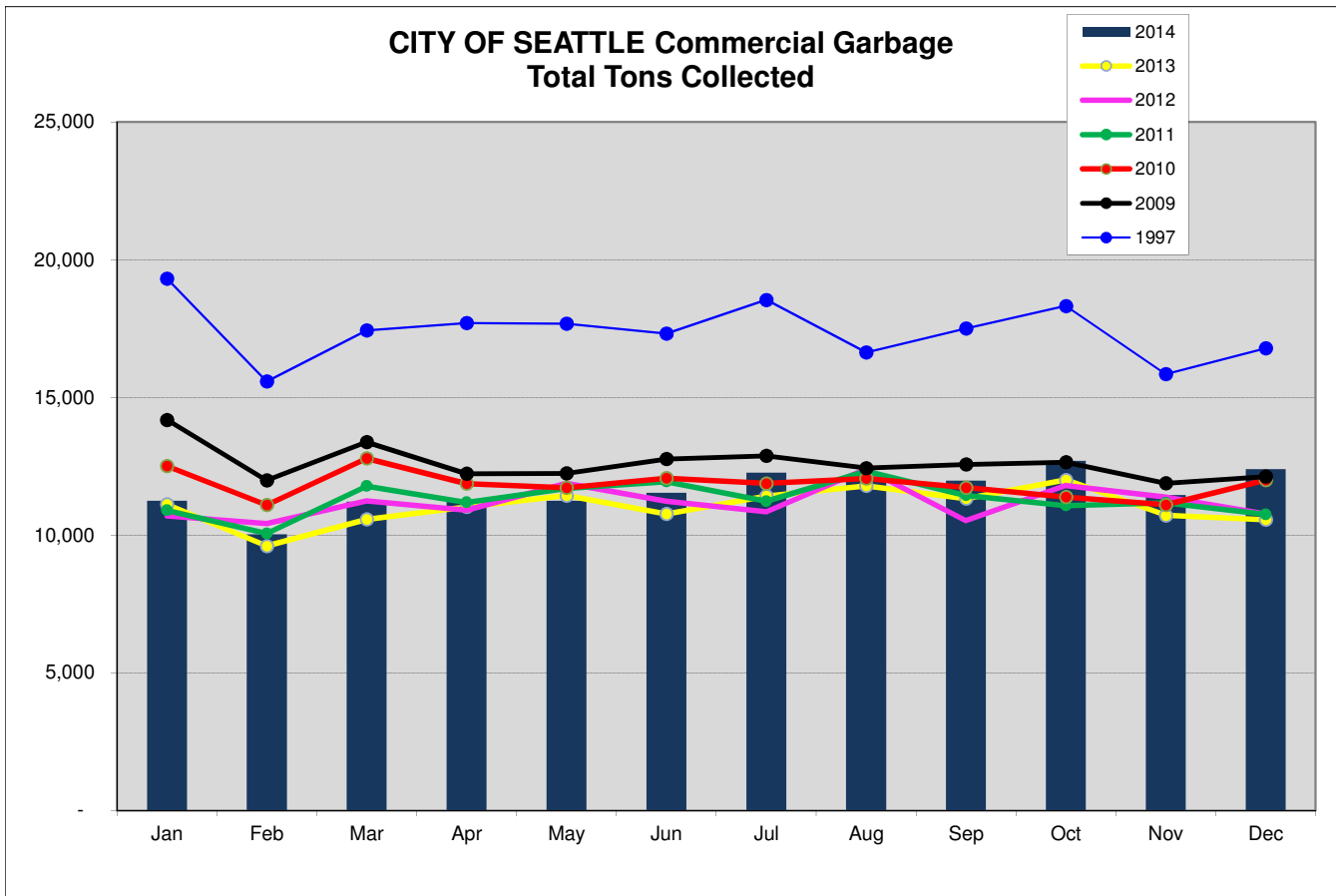
² This is the rate for a one cubic yard un-compacted container picked up once per week, which is the most common dumpster service level. Residential dumpster service rates vary based on the number and size of containers and the number of pickups per week.

CITY OF SEATTLE SELF HAUL TO CITY OWNED STATIONS Self Haul Cars and Trucks Tons

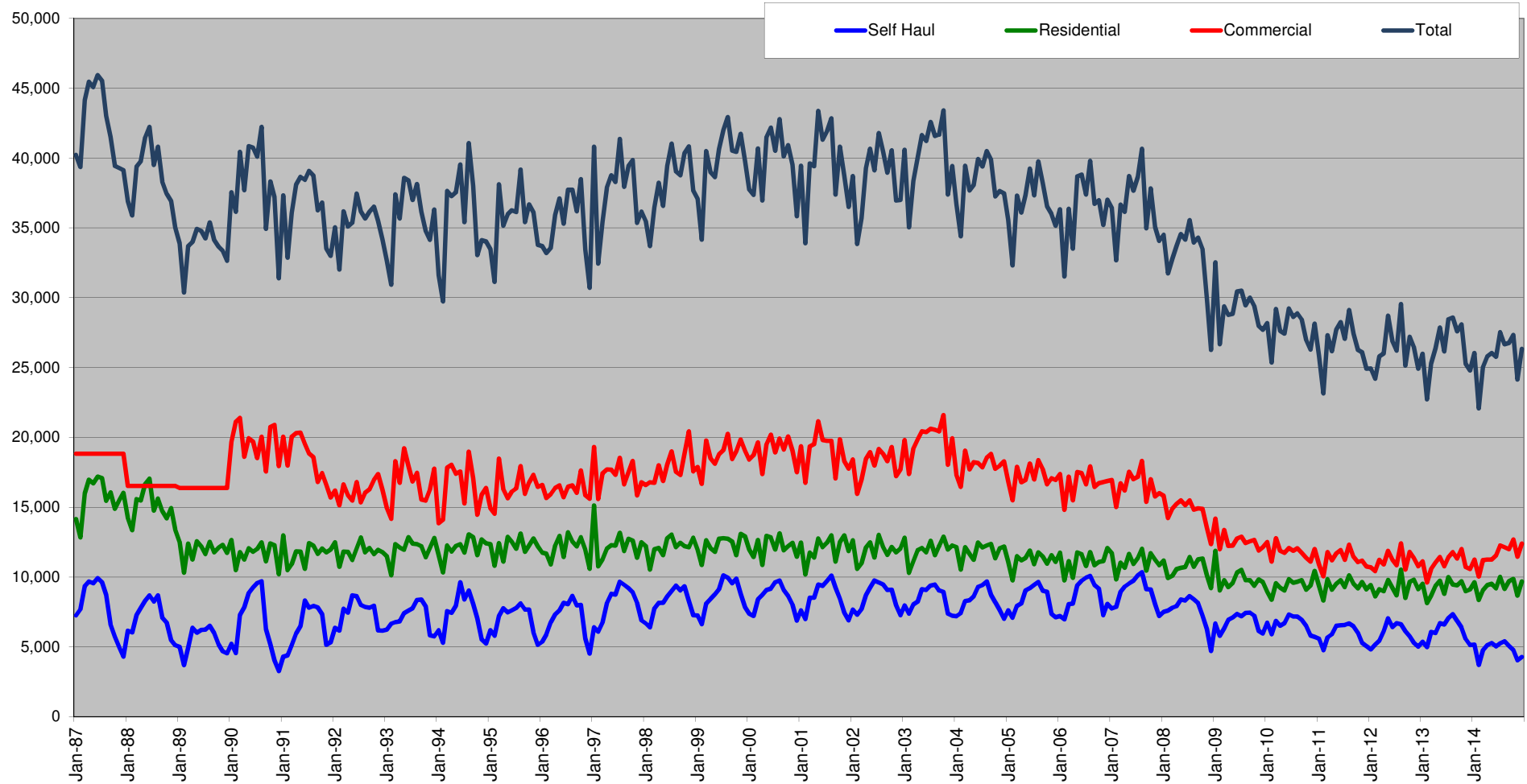


CITY OF SEATTLE RESIDENTIAL COLLECTION Total City Tons





City of Seattle Garbage Disposal



Monthly commercial tonnage for 1987-1989 estimated from annual data.