

GARBAGE REPORT

4th Quarter 2010

Seattle Public Utilities, Economic Services Section

Report Date: January, 25 2011

Phone: (206) 684-4143

Total City Tonnage Breakdown

Q4 Self Haul Cars ¹	1,309 Tons	3.0% decrease vs. same period in 2009
2010 Cumulative Self Haul Cars:	6,230 Tons	2.0% decrease vs. same period in 2009
Q4 Self Haul Trucks ² :	16,731 Tons	6.9% decrease vs. same period in 2009
2010 Cumulative Self Haul Trucks:	73,063 Tons	2.9% decrease vs. same period in 2009
2010 Cumulative Self Haul Cars & Trucks:	79,293 Tons	2.8% decrease vs. same period in 2009
Q4 Residential Collection	29,242 Tons	1.5% increase vs. same period in 2009
2010 Cumulative Residential Collection:	114,135 Tons	3.9% decrease vs. same period in 2009
Q4 Commercial Tons	34,481 Tons	6.7% decrease vs. same period in 2009
2010 Cumulative Commercial Tons:	142,180 Tons	6.1% decrease vs. same period in 2009
Q4 Total Tons Disposed:	61,764 Tons	3.9% decrease vs. same period in 2009
2010 Cumulative Total Tons Disposed:	335,607 Tons	4.6% decrease vs. same period in 2009

Recycling & Disposal Station Self Haul Garbage Rates³:

Cars: \$30.00 per trip

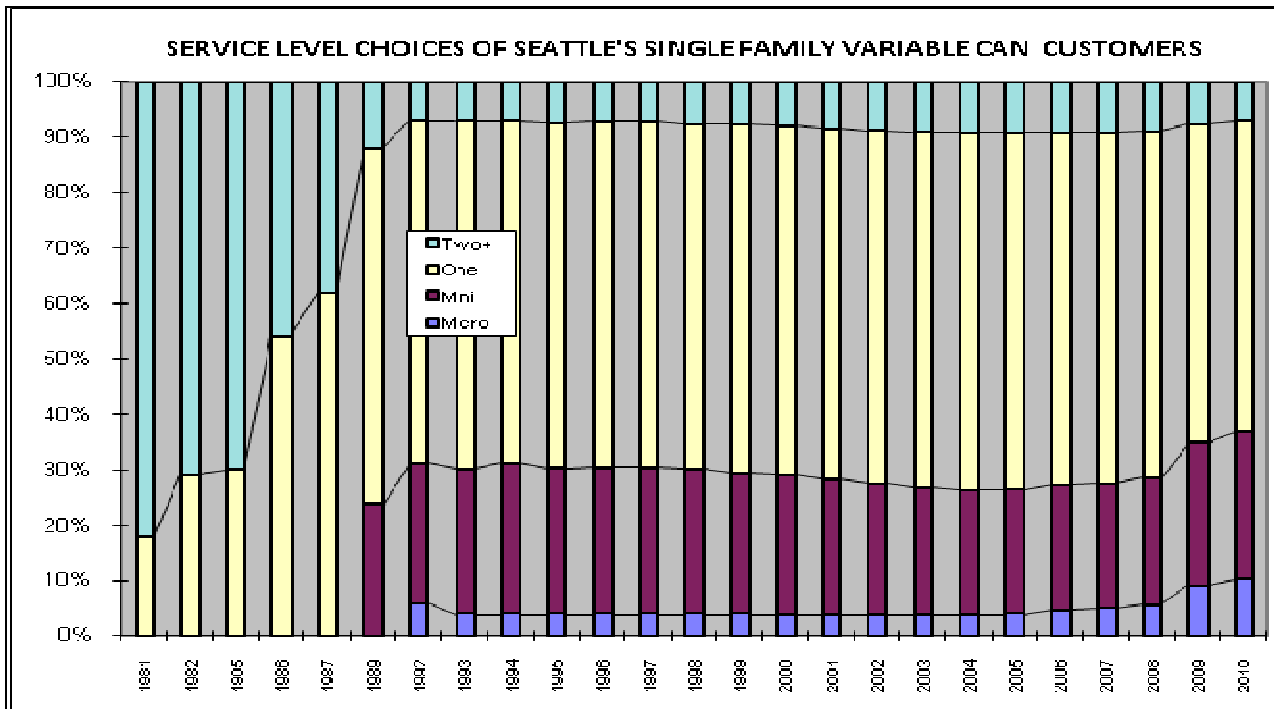
Trucks: \$145.00 per ton (\$30.00 minimum)

¹ Car tons calculated based on 480.8 pounds per car for 2009 to present according to study done from Jan-Dec 2008

² An estimated 53% of the self-haul truck tons are commercial according to a waste stream sampling study conducted in 2000.

³ Vans & pickup trucks pay the per ton truck rate.

Variable Can Customer Service Levels¹



	Micro	Mini	One	Two+
1981			18.00%	82.00%
1982			29.00%	71.00%
1985			30.00%	70.00%
1986			54.00%	46.00%
1987			62.00%	38.00%
1989		24.00%	64.00%	12.00%
1992	6.00%	25.00%	62.00%	7.00%
1993	4.00%	26.00%	63.00%	7.00%
1994	4.00%	27.00%	62.00%	7.00%
1995	4.06%	26.15%	62.44%	7.35%
1996	4.04%	26.23%	62.59%	7.14%
1997	4.04%	26.23%	62.59%	7.14%
1998	4.16%	25.88%	62.35%	7.61%
1999	4.06%	25.60%	63.62%	7.72%
2000	3.93%	25.08%	63.02%	7.97%
2001	3.96%	24.24%	63.32%	8.49%
2002	3.85%	23.62%	63.72%	8.82%
2003	3.84%	22.85%	64.23%	9.08%
2004	3.86%	22.31%	64.54%	9.30%
2005	4.13%	22.22%	64.37%	9.28%
2006	4.72%	22.49%	63.57%	9.21%
2007	5.05%	22.50%	63.17%	9.28%
2008	5.66%	22.85%	62.45%	9.04%
2009	8.93%	25.89%	57.51%	7.67%
2010	10.21%	26.69%	56.08%	7.02%

Monthly Variable Can Rates:

Micro (12 gal)	\$14.05
Mini (19 gal)	\$17.15
One Can (32 gal)	\$22.30
Two Cans (64 gal)	\$44.60
Each Add'l Can	\$22.30

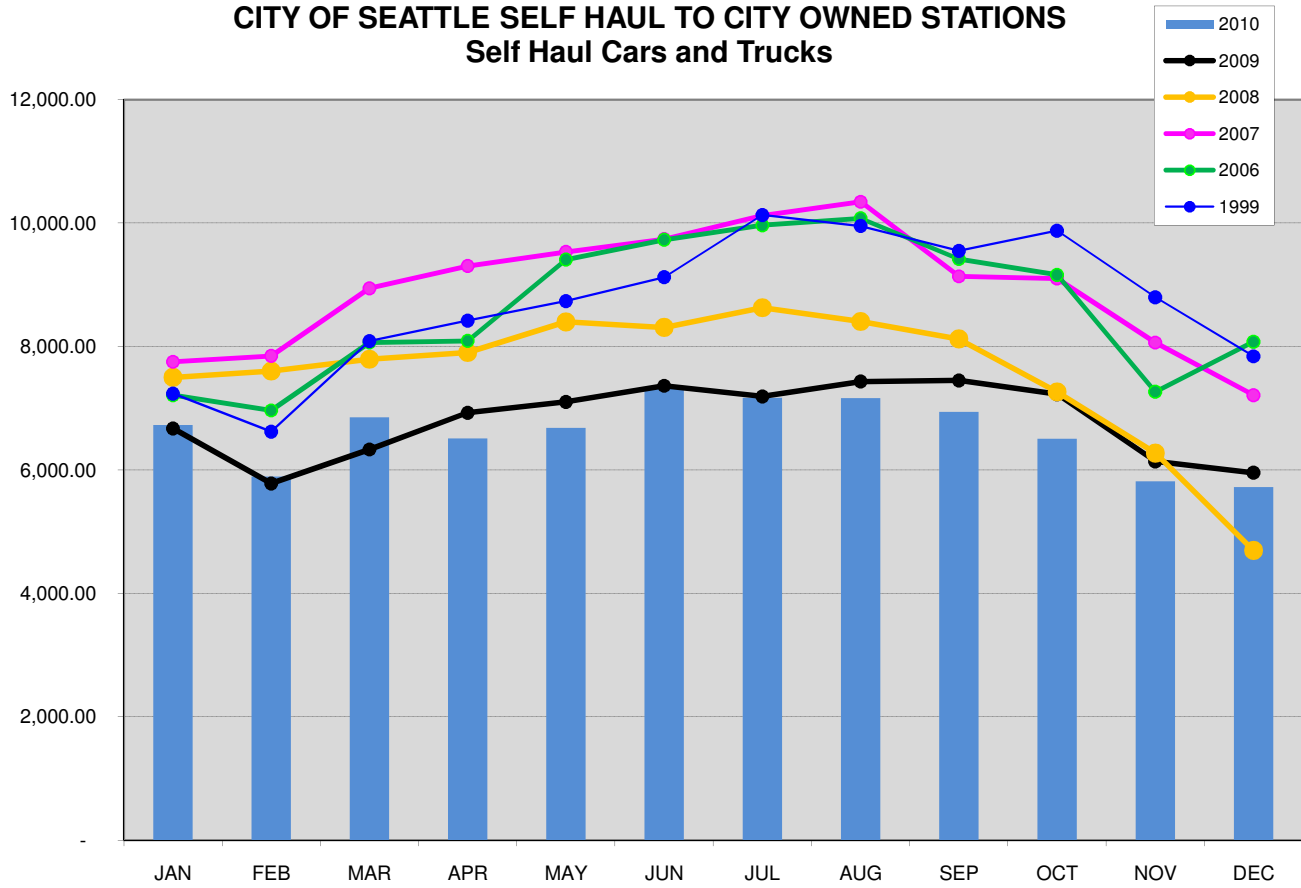
Residential Dumpster Service²

Most Common Monthly Rate
\$140.73 (+ \$26.55 per account)

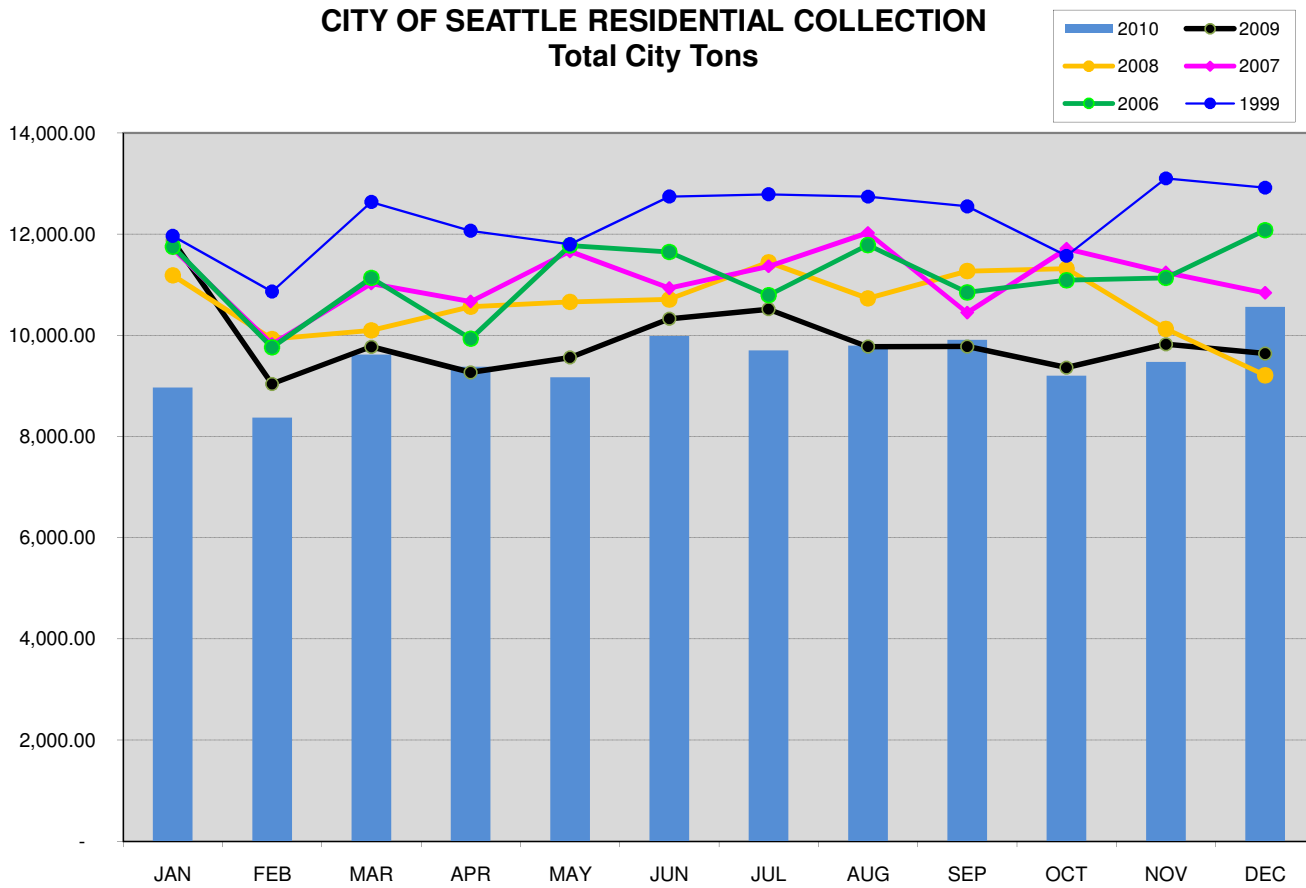
¹ Based on single-family customers only

² This is the rate for a one cubic yard uncompacted container picked up once per week, which is the most common dumpster service level. Residential dumpster service rates vary based on the number and size of containers and the number of pickups per week.

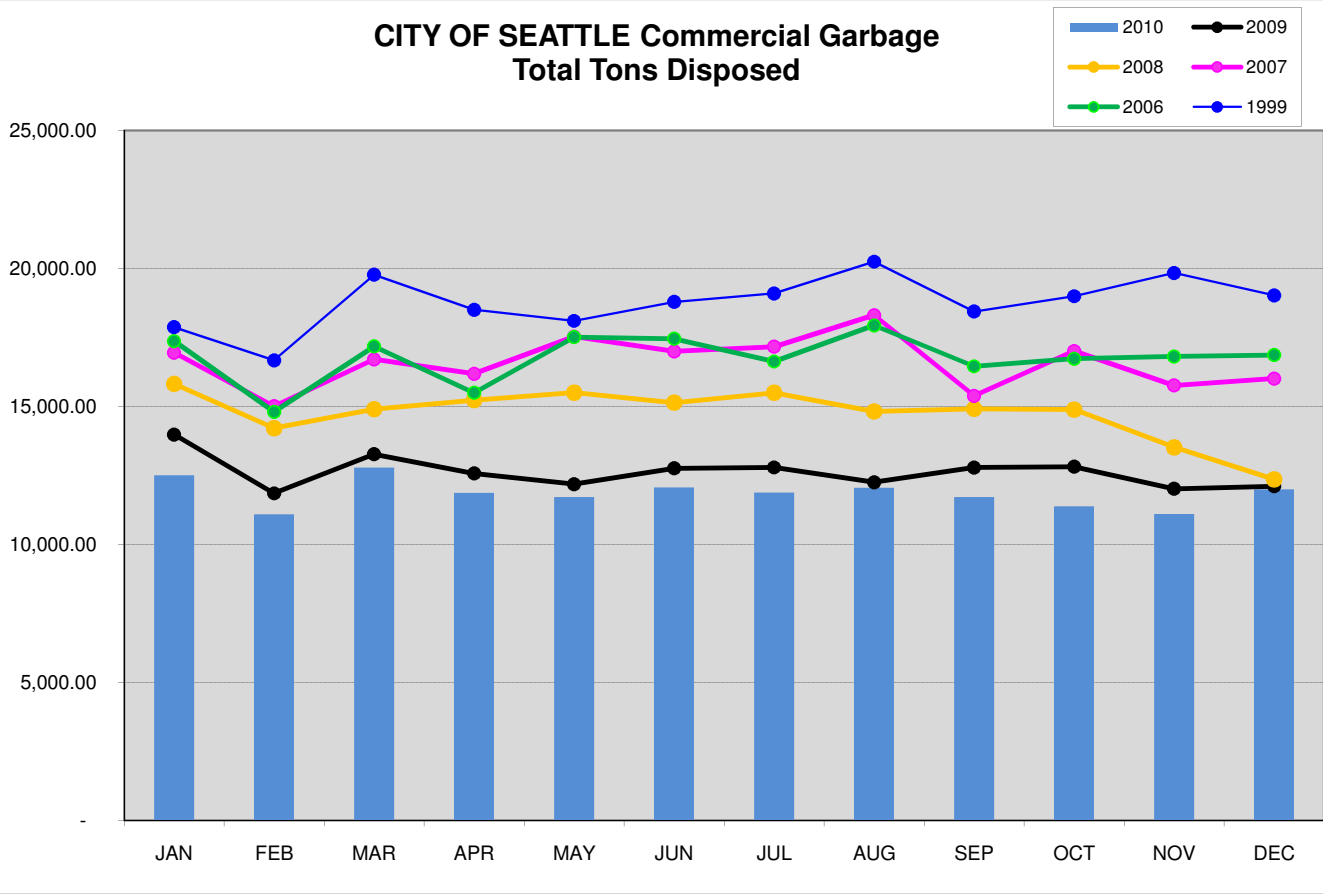
CITY OF SEATTLE SELF HAUL TO CITY OWNED STATIONS Self Haul Cars and Trucks



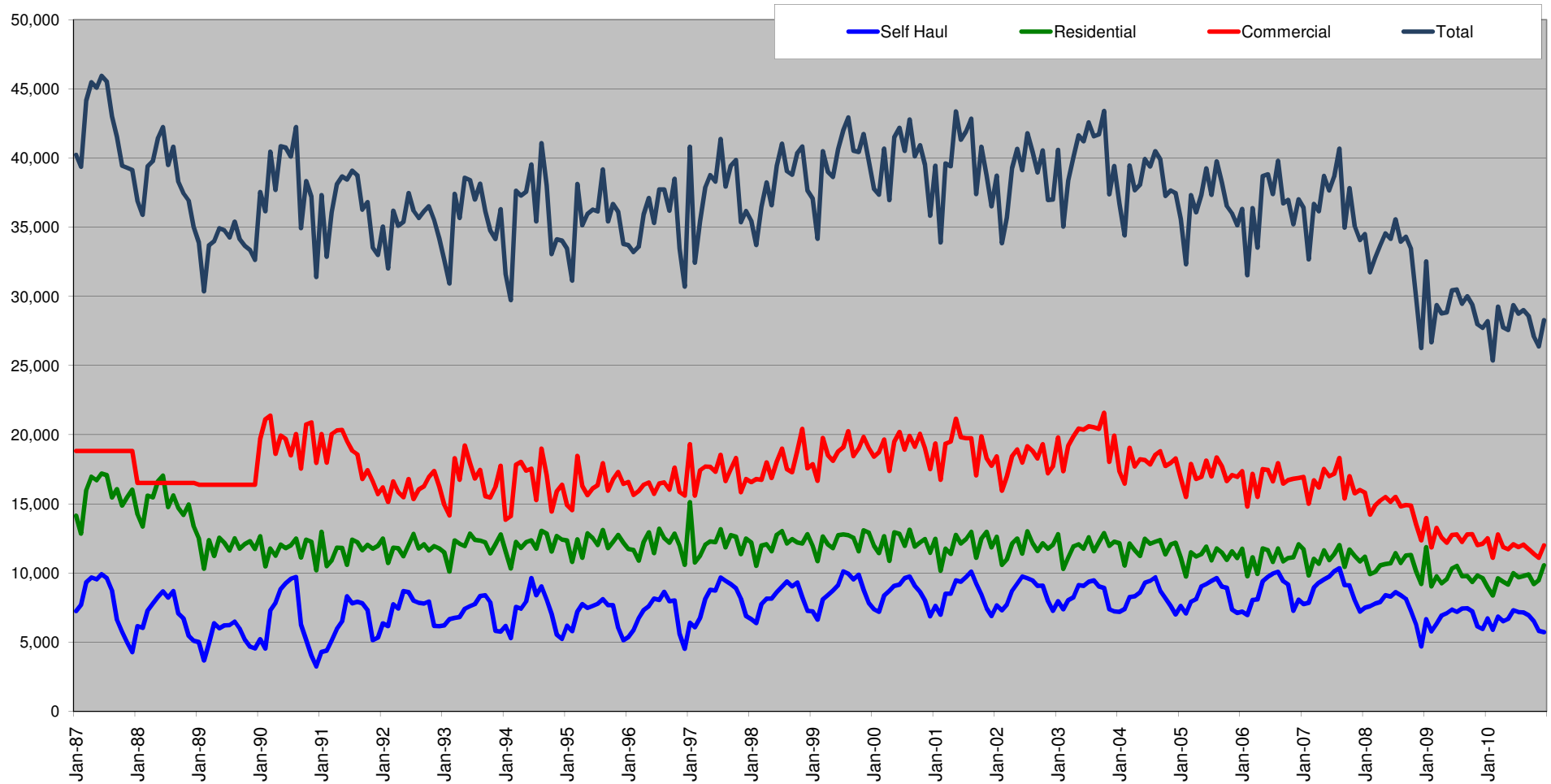
CITY OF SEATTLE RESIDENTIAL COLLECTION Total City Tons



CITY OF SEATTLE Commercial Garbage Total Tons Disposed



City of Seattle Garbage Disposal



Monthly commercial tonnage for 1987-1989 estimated from annual data.