

GARBAGE REPORT

December 2008

Seattle Public Utilities, Utility Systems Management, Cross Line of Business Economic Services Section

Report Date: January 29, 2009

Phone: (206) 684-4143

Total City Tonnage Breakdown

Self Haul Cars ¹ in December:	267Tons	48.8%	decrease vs. same period in 2007
2008 Cumulative Self Haul Cars:	5,746 Tons	14.9%	decrease vs. same period in 2007
Self Haul Trucks ² in December:	4,301 Tons	35.7%	decrease vs. same period in 2007
2008 Cumulative Self Haul Trucks:	84,956 Tons	15.3%	decrease vs. same period in 2007
2008 Cumulative Self Haul Cars & Trucks:	90,702 Tons	15.3%	decrease vs. same period in 2007
Residential Collection in December:	9,203 Tons	15.1%	decrease vs. same period in 2007
2008 Cumulative Residential Collection:	127,167 Tons	4.7%	decrease vs. same period in 2007
Commercial Tons in December:	12,349 Tons	22.9%	decrease vs. same period in 2007
2008 Cumulative Commercial Tons:	176,774 Tons	11.2%	decrease vs. same period in 2007
Total Tons Disposed in December:	26,120 Tons	23.3%	decrease vs. same period in 2007
2008 Cumulative Total Tons Disposed:	394,643 Tons	10.2%	decrease vs. same period in 2007

Selected Statistics for Residential Collection Service

Cumulative Residential Collection Tons through December 2008:

Collected by Waste Management:	47,738 Tons	4.8%	decrease vs. same period in 2007
Collected by Rabanco:	79,429 Tons	4.6%	decrease vs. same period in 2007

Recycling & Disposal Station Self Haul Garbage Rates³:

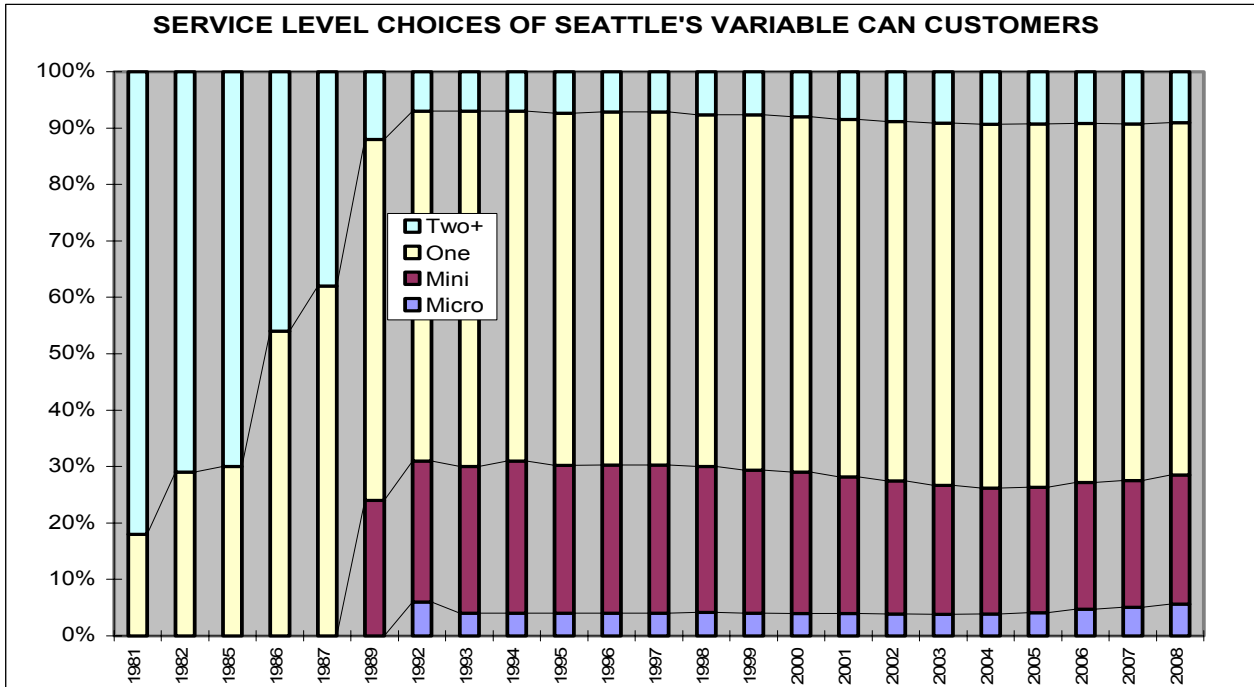
Cars: \$25.00 per trip Trucks: \$130.00 per ton (\$25.00 minimum)

¹ Car tons calculated based on 378.8 pounds per car for 2001 to present according to study done from Jan-Dec 2000

² An estimated 53% of the self-haul truck tons are commercial according to a waste stream sampling study conducted in 2000.

³ Vans & pickup trucks pay the per ton truck rate.

Variable Can Customer Service Levels³



	Micro	Mini	One	Two+
1981			18.00%	82.00%
1982			29.00%	71.00%
1985			30.00%	70.00%
1986			54.00%	46.00%
1987			62.00%	38.00%
1989		24.00%	64.00%	12.00%
1992	6.00%	25.00%	62.00%	7.00%
1993	4.00%	26.00%	63.00%	7.00%
1994	4.00%	27.00%	62.00%	7.00%
1995	4.06%	26.15%	62.44%	7.35%
1996	4.04%	26.23%	62.59%	7.14%
1997	4.04%	26.23%	62.59%	7.14%
1998	4.16%	25.88%	62.35%	7.61%
1999	4.06%	25.60%	63.62%	7.72%
2000	3.93%	25.08%	63.02%	7.97%
2001	3.95%	24.18%	63.16%	8.71%
2002	3.84%	23.57%	63.58%	9.02%
2003	3.83%	22.81%	64.10%	9.26%
2004	3.85%	22.27%	64.42%	9.46%
2005	4.12%	22.18%	64.27%	9.43%
2006	4.72%	22.49%	63.57%	9.21%
2007	5.05%	22.50%	63.17%	9.26%
2008	5.66%	22.85%	62.45%	9.04%

Monthly Variable Can Rates:

Micro (12 gal)	\$11.05
Mini (19 gal)	\$13.55
One Can (32 gal)	\$17.65
Two Cans (64 gal)	\$35.30
Each Add'l Can	\$17.65

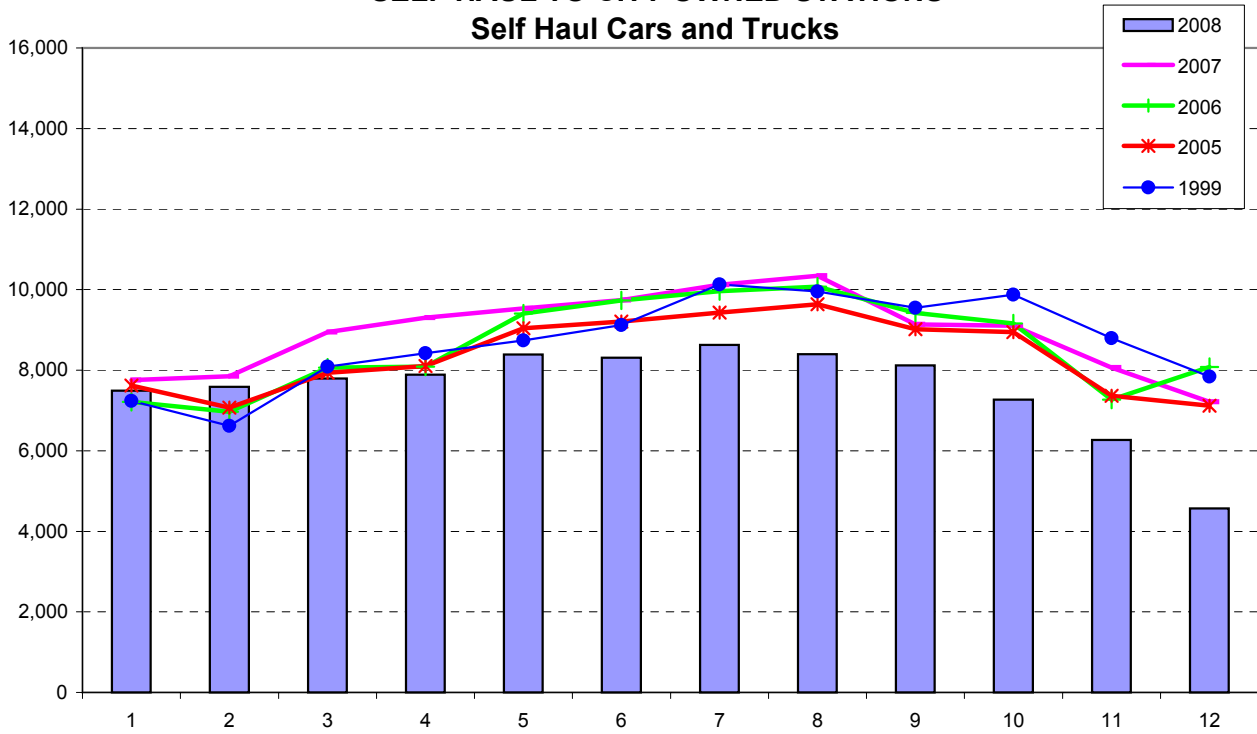
Residential Dumpster Service⁴

Most Common Monthly Rate
\$112.20 (+ \$.60 per unit)

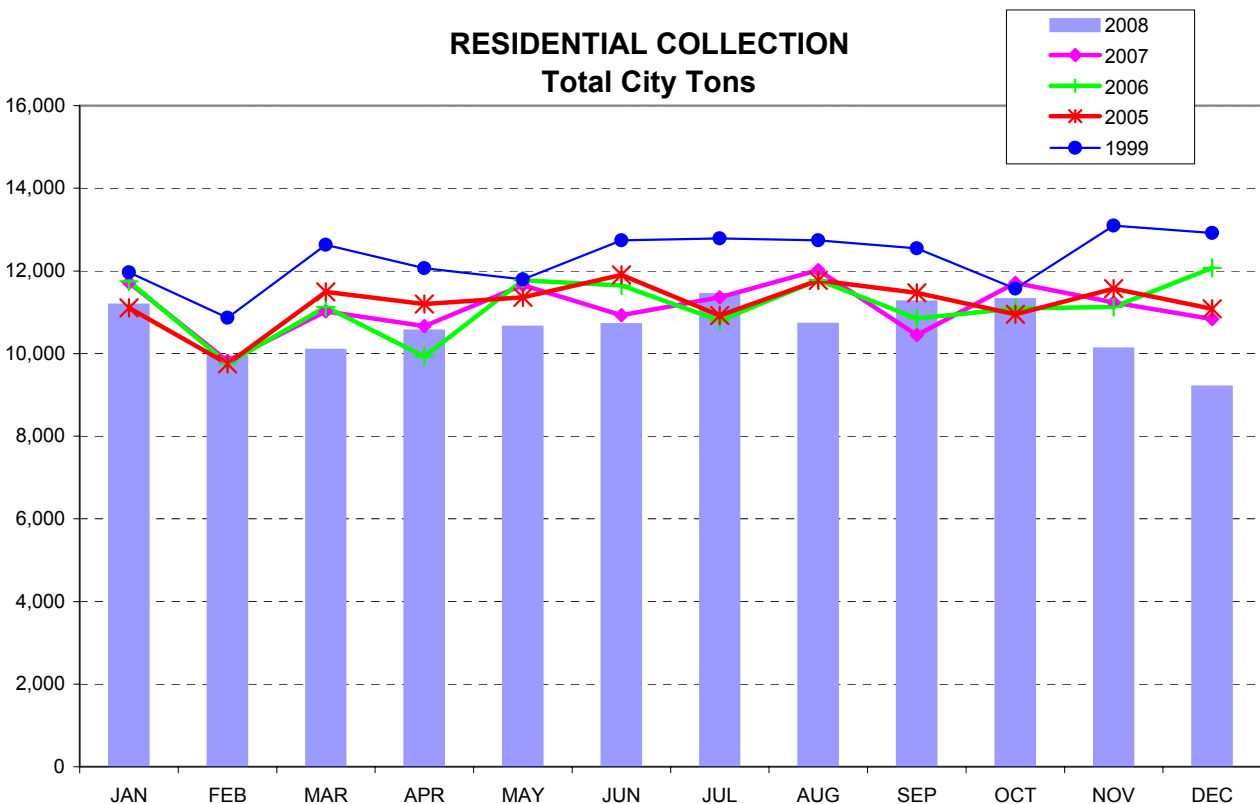
³ Based on single-family customers only

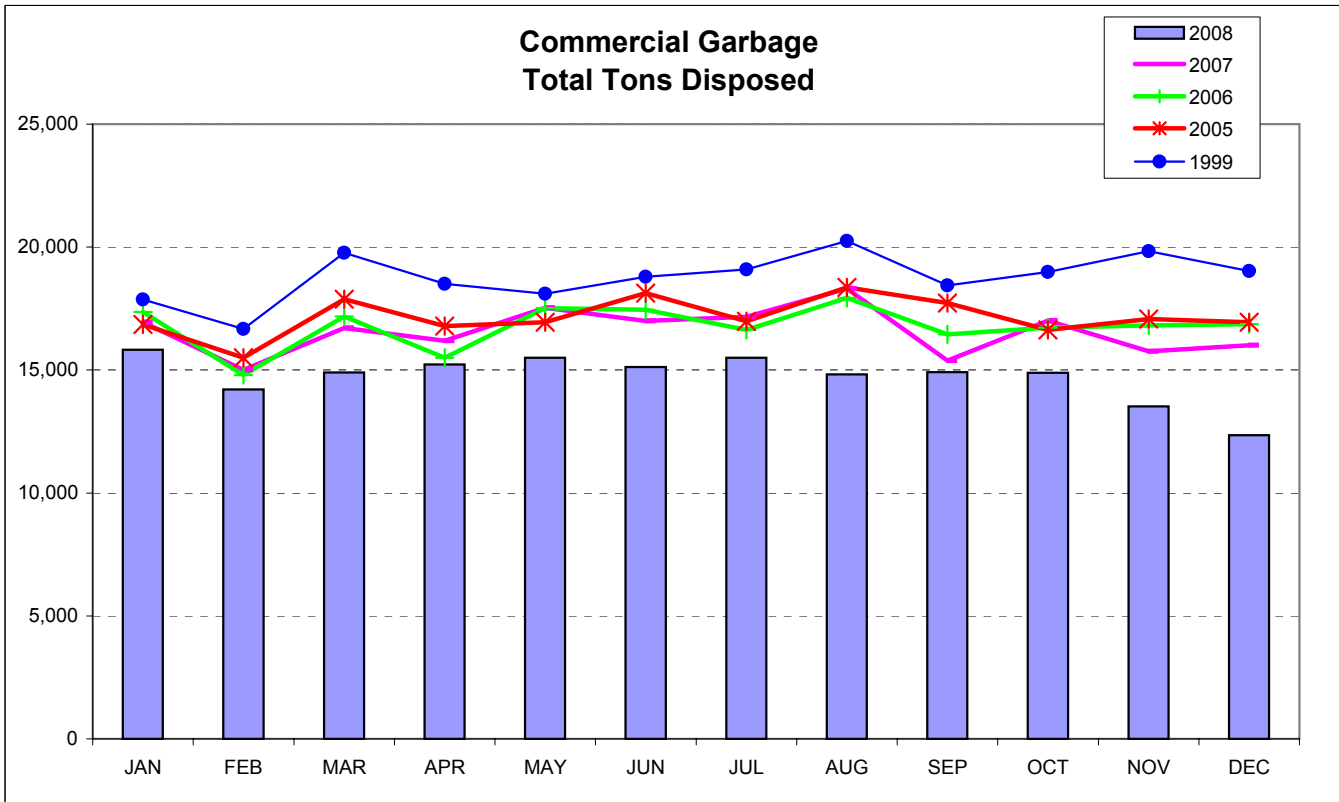
⁴ This is the rate for a one cubic yard container picked up once per week, which is the most common dumpster service level. Residential dumpster service rates vary based on the number and size of containers, the number of pickups per week, and the number of dwelling units.

SELF HAUL TO CITY OWNED STATIONS Self Haul Cars and Trucks

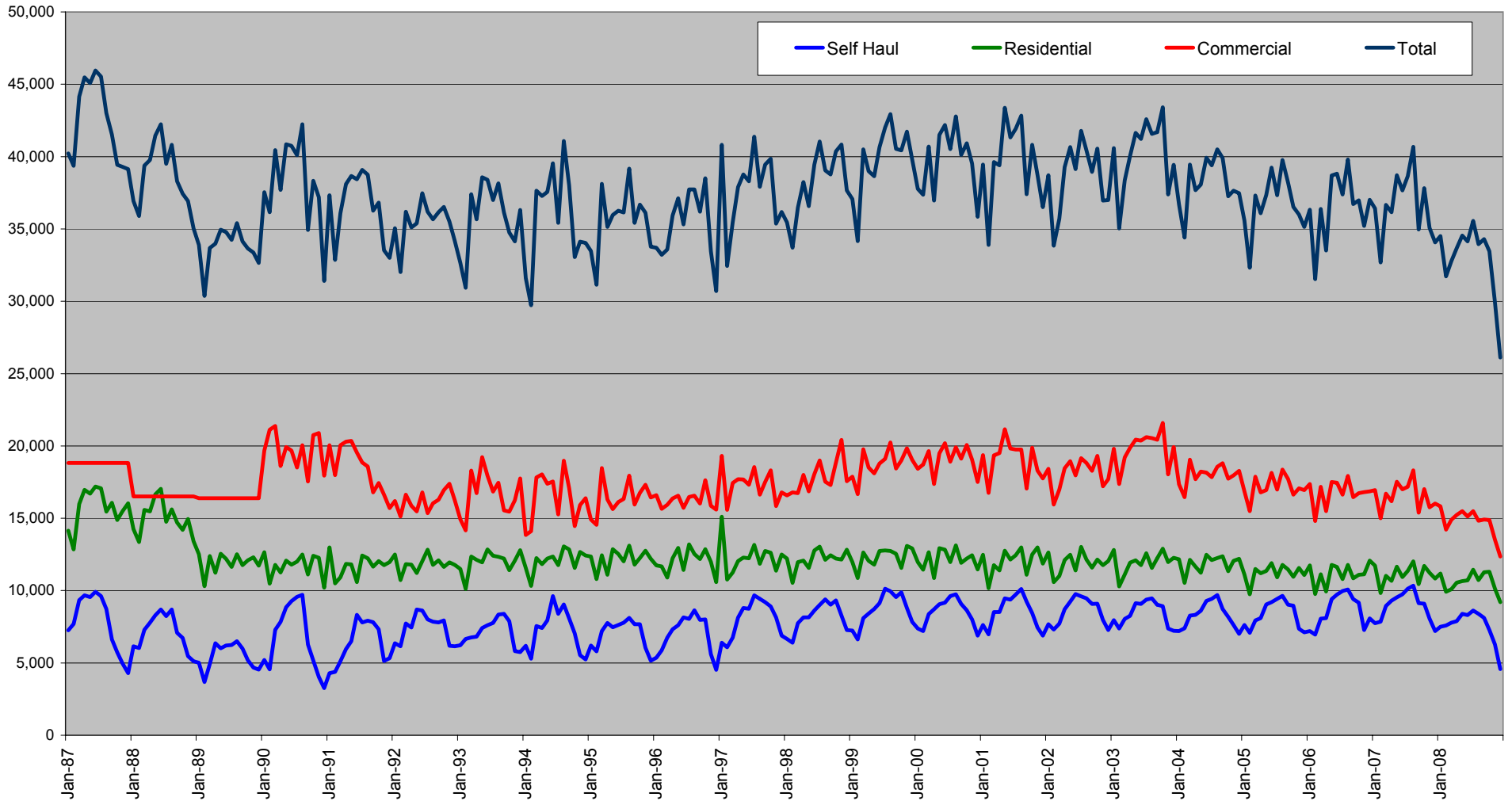


RESIDENTIAL COLLECTION Total City Tons





City of Seattle Garbage Disposal



Monthly commercial tonnage for 1987-1989 estimated from annual data.