

CURBSIDE RECYCLING REPORT

December 2008

Seattle Public Utilities, Utility Systems Management, Cross Line of Business Economic Services Section

Report Date: January 27, 2009

Phone: (206) 684-4143

TONNAGE BREAKDOWN

North End Tons (Without Contaminants)

North End in December 2008:	2,039 Tons	26.8%	decrease from 2007
Cumulative North End:	28,819 Tons	8.0%	decrease from 2007

South End Tons (Without Contaminants)

South End in December 2008:	2,768 Tons	11.3%	decrease from 2007
Cumulative South End:	33,137 Tons	4.8%	decrease from 2007

Citywide Tons (Without Contaminants)

Citywide in December 2008:	4,807 Tons	18.6%	decrease from 2007
Cumulative Citywide:	61,956 Tons	6.3%	decrease from 2007

Selected Statistics for January – December 2008

Average Pounds Per Eligible Household Per Month¹

North End:	68.1	(72,382 eligible households)
South End:	68.0	(81,685 eligible households)
Citywide:	67.8	(154,067 eligible households)

Service Citywide:

All materials are collected every other week on the same day as garbage collection service. Residents are provided 60 or 90 gallon carts for mixed recyclables and a 10 gallon bin for glass.

Materials Citywide²:

Newspaper, Mixed Paper³, Glass, Aluminum, Tin, PET & HDPE⁴ Bottles, Ferrous Metals, Plastic Bags (grocery bags), Plastic Containers (dairy/yogurt containers), milk cartons and juice boxes. Beginning January 2005, for all materials except plastics, there is a recycling requirement. Beginning January 2006, the recycling requirement is being enforced by not collecting garbage cans which contain more than 10% recyclables.

¹ Beginning Jan 2002, eligible household data based on new billing system (Banner).

² Effective April 1, 2000, the new contracts allow residents to combine all their recyclable materials - except glass – in one container. More kinds of materials can be recycled, including milk cartons, juice boxes, plastic bags, and plastic dairy and yogurt containers. Residents have one collection day per week for garbage, recycling and yard waste. Garbage is collected weekly. Recycling and yardwaste are collected on the same day on alternating weeks—recycling one week, yard waste the next week.

³ Overall, approximately 12% of the mixed paper is cardboard (OCC) based on 2000/2001 sampling data.

⁴ HDPE Bottles were added in April 1992. The overall breakdown between HDPE and PET is 51% and 49% respectively based on 2000/2001 sampling data.

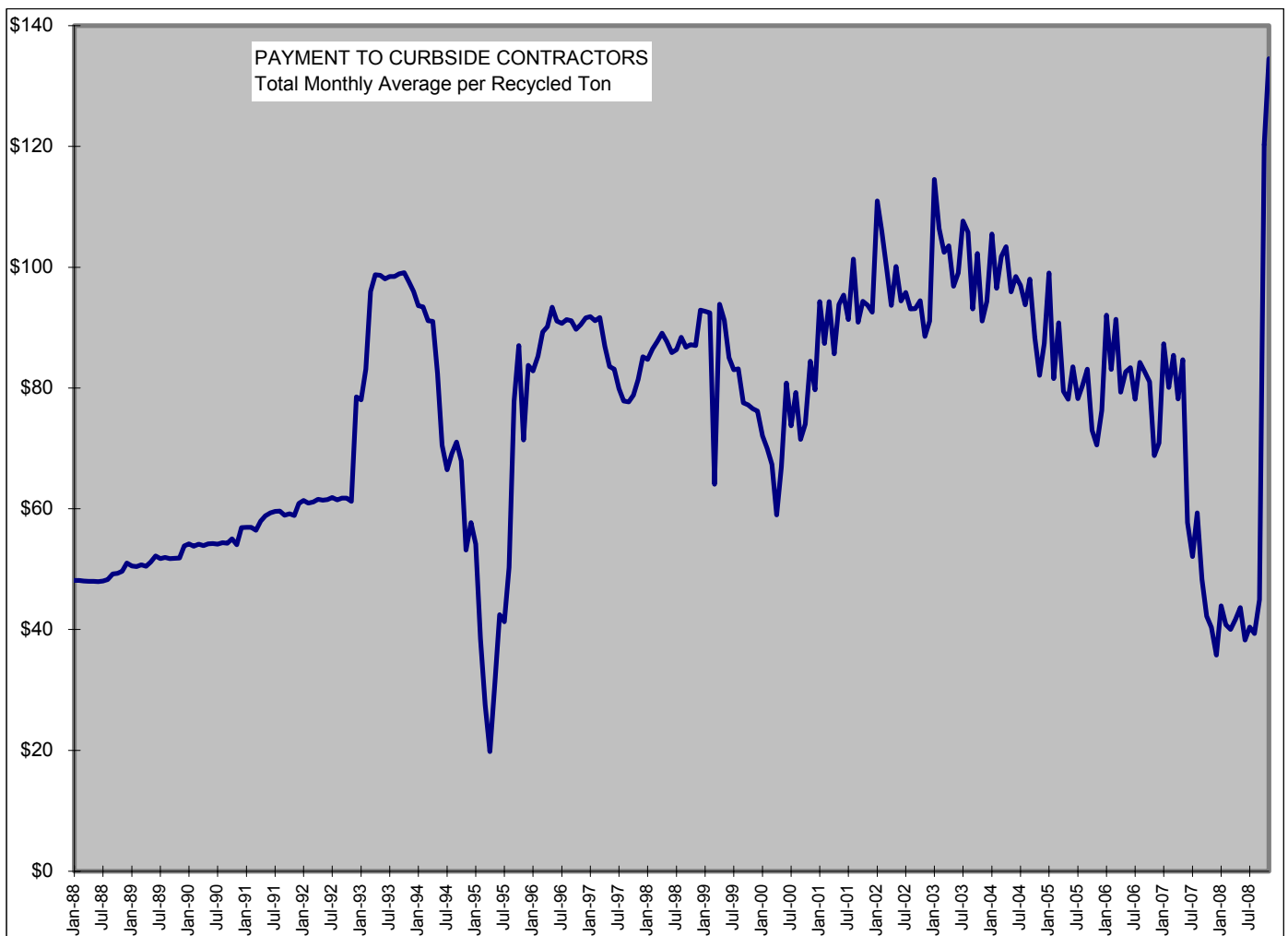
Program Costs⁵

Citywide Yearly Cumulative Average Cost/Ton

1988	\$ 48.55	1995	\$ 50.27	2002	\$ 96.46
1989	\$ 51.33	1996	\$ 89.15	2003	\$100.62
1990	\$ 54.20	1997	\$ 84.59	2004	\$ 95.82
1991	\$ 58.28	1998	\$ 86.88	2005	\$ 81.72
1992	\$ 61.41	1999	\$ 86.39	2006	\$ 81.44
1993	\$ 93.25	2000 ⁶	\$ 72.78	2007	\$ 64.83
1994	\$ 77.38	2001	\$ 91.64	2008	\$ 54.28

Avg. Cost in December 2008: \$134.52

(Payment to contractors falls when market prices for recyclable materials increase.)



⁵ Figures shown reflect the average amount SPU pays the recycling contractors, which is a total contract price plus (or minus) a variable amount determined by market prices. In other words, the figures reflect the cost to the city of collection and sorting (including payment for disposal of contaminants). Revenue received for sale of the materials belongs to the contractor and as such these cost figures should not be construed as the total net cost of recycling; figures also do not include costs such as liquidated damages and SPU program administration.

⁶ As of April 2000 recycling program costs include both curbside (single family) and apartment (multi-family) programs. Prior to April 2000, the costs shown are only for the curbside program.

CURBSIDE RECYCLING PROGRAM

NORTH END TONNAGE DATA															
Yr	Mo	FERROUS			MIXED PAPER	NEWS-PAPER	PLASTIC (PET/HDPE)	TIN	CONTAM-INANTS	TOTAL w/cont	TOTAL w/o cont	SET OUTS	ELIGIBLE HOUSEHOLDS ²	POUNDS PER HOUSEHOLD	POUNDS PER SET OUT
		ALUM	METAL	GLASS											
2007	1	17.2	7.8	562.0	1,244.0	1,025.5	73.8	26.8	56.4	3,013.5	2,957.1	NA	71,054	83.2	NA
2007	2	13.5	6.2	443.2	981.1	808.8	58.2	21.2	44.4	2,376.6	2,332.1	NA	71,123	65.6	NA
2007	3	14.9	6.8	487.1	1,078.2	888.9	64.0	23.2	48.8	2,612.0	2,563.2	NA	71,195	72.0	NA
2007	4	14.0	6.4	457.2	1,012.0	834.2	60.1	21.8	45.8	2,451.5	2,405.7	NA	71,300	67.5	NA
2007	5	15.0	6.8	490.0	1,084.7	894.2	64.4	23.4	49.1	2,627.6	2,578.5	NA	71,398	72.2	NA
2007	6	14.4	6.5	469.7	1,039.6	857.0	61.7	22.4	47.1	2,518.4	2,471.3	NA	71,465	69.2	NA
2007	7	14.8	6.8	485.3	1,074.1	885.4	63.7	23.2	48.7	2,602.0	2,553.3	NA	71,542	71.4	NA
2007	8	16.3	7.4	533.8	1,181.5	974.0	70.1	25.5	53.5	2,862.3	2,808.7	NA	71,601	78.5	NA
2007	9	14.4	6.5	469.8	1,039.9	857.3	61.7	22.4	47.1	2,519.2	2,472.1	NA	71,594	69.1	NA
2007	10	15.3	7.0	501.2	1,109.3	914.5	65.8	23.9	50.3	2,687.2	2,637.0	NA	71,597	73.7	NA
2007	11	16.0	7.3	522.6	1,156.8	953.6	68.7	24.9	52.4	2,802.3	2,749.9	NA	71,600	76.8	NA
2007	12	16.2	7.4	529.8	1,172.6	966.6	69.6	25.3	53.1	2,840.6	2,787.5	NA	71,638	77.8	NA
2008	1	17.1	7.8	559.3	1,238.0	1,020.6	73.5	26.7	56.1	2,999.1	2,943.0	NA	71,627	82.2	NA
2008	2	12.9	5.9	421.1	932.0	768.3	55.3	20.1	42.2	2,257.8	2,215.6	NA	71,687	61.8	NA
2008	3	13.5	6.1	440.2	974.2	803.1	57.8	21.0	44.1	2,360.1	2,315.9	NA	71,717	64.6	NA
2008	4	14.0	6.4	458.7	1,015.3	836.9	60.3	21.9	46.0	2,459.4	2,413.4	NA	71,849	67.2	NA
2008	5	14.0	6.4	457.4	1,012.3	834.5	60.1	21.8	45.9	2,452.3	2,406.4	NA	71,952	66.9	NA
2008	6	13.6	6.2	443.8	982.3	809.8	58.3	21.2	44.5	2,379.7	2,335.2	NA	72,036	64.8	NA
2008	7	15.0	6.8	490.2	1,085.1	894.5	64.4	23.4	49.2	2,628.6	2,579.5	NA	72,136	71.5	NA
2008	8	13.7	6.3	449.7	995.3	820.5	59.1	21.5	45.1	2,411.2	2,366.1	NA	72,209	65.5	NA
2008	9	14.0	6.4	459.7	1,017.4	838.7	60.4	21.9	46.1	2,464.6	2,418.6	NA	72,264	66.9	NA
2008	10	14.6	6.7	477.8	1,057.5	871.7	62.8	22.8	47.9	2,561.7	2,513.8	NA	72,282	69.6	NA
2008	11	13.2	6.0	431.8	955.8	788.0	56.7	20.6	43.3	2,315.5	2,272.2	NA	72,318	62.8	NA
2008	12	11.8	5.4	387.6	857.8	707.2	50.9	18.5	38.9	2,078.1	2,039.2	NA	72,382	56.3	NA
2008 Total:		167.4	76.4	5,477.1	12,123.1	9,993.9	719.5	261.4	549.2	29,368.1	28,818.9	2008 Avg:		68.1	NA
2007 Total:		181.9	83.0	5,951.8	13,173.8	10,860.1	781.9	284.0	596.8	31,913.2	31,316.5	2007 Avg:		73.1	NA
2006 Total:		180.8	82.5	5,914.2	13,090.6	10,791.5	776.9	282.2	593.0	31,711.7	31,118.7	2006 Avg:		73.4	NA
2005 Total:		180.1	82.1	5,891.5	13,040.2	10,749.9	773.9	281.1	590.7	31,589.6	30,998.9	2005 Avg:		73.2	NA
2004 Total:		211.9	15.6	5,693.2	12,732.5	10,495.1	710.5	370.8	934.8	31,164.4	30,229.6	2004 Avg:		71.9	NA
2003 Total:		204.6	15.0	5,497.4	12,294.6	10,134.1	686.0	358.1	902.7	30,092.5	29,189.8	2003 Avg:		69.9	NA
2002 Total:		205.5	15.1	5,521.2	12,347.9	10,178.1	689.0	359.6	906.6	30,223.0	29,316.4	2002 Avg:		70.6	N/A
2001 Total:		205.9	15.1	5,530.9	12,369.5	10,195.9	690.2	360.2	908.2	30,276.0	29,367.8	2001 Avg:		70.1	N/A
2000 Total:		268.8	20.8	6,424.5	12,321.4	11,151.9	717.5	351.6	992.7	32,012.0	31,256.5	2000 Avg:		74.6	N/A
1999 Total:		476.2	45.9	7,329.5	12,126.4	13,657.2	412.7	952.3	271.6	35,271.7	35,000.1	1999 Avg:		83.6	21.9
1998 Total:		446.4	43.0	6,871.3	11,368.4	12,803.5	386.9	892.8	254.6	33,066.8	32,812.2	1998 Avg:		78.3	22.3
1997 Total:		436.1	42.0	6,712.9	11,106.3	12,508.3	378.0	872.2	248.7	32,304.4	32,057.7	1997 Avg:		76.5	23.0
1996 Total:		408.4	39.3	6,286.3	10,400.6	11,713.5	353.9	816.8	232.9	30,251.8	30,018.9	1996 Avg:		71.7	23.1
1995 Total:		415.2	40.0	6,391.7	10,574.9	11,909.9	359.9	830.5	236.8	30,759.0	30,522.1	1995 Avg:		72.9	24.2
1994 Total:		408.0	39.3	6,279.8	10,389.8	11,701.3	353.6	815.9	232.7	30,220.4	29,987.7	1994 Avg:		71.6	24.7
1993 Total:		379.6	36.6	5,843.1	9,667.2	10,887.6	329.0	759.2	216.5	28,118.7	27,902.2	1993 Avg:		66.4	23.5
1992 Total:		575.2	NA	6,595.5	9,289.1	7,915.0	182.7	917.2	498.2	25,972.9	25,474.7	1992 Avg:		60.7	23.1
1991 Total:		410.6	NA	5,961.3	11,116.4	6,540.8	157.9	1,004.0	252.5	25,443.5	25,191.0	1991 Avg:		60.0	24.1
1990 Total:		658.5	NA	4,874.2	9,687.8	9,057.2	64.1	745.4	115.8	25,203.0	25,087.2	1990 Avg:		59.9	26.6
1989 Total:		320.1	NA	5,296.5	9,118.7	7,524.8	13.3	678.0	31.0	22,982.4	22,951.4	1989 Avg:		58.9	25.8
1988 Total:		159.4	NA	3,574.5	5,186.7	5,411.5	0.0	392.2	39.4	14,763.7	14,724.3	1988 Avg:		41.2	29.2

NORTH END PERCENTAGE BREAKDOWN BY MATERIAL										
YEAR	FERROUS			MIXED PAPER	NEWS-PAPER	PLASTIC (PET/HDPE)	TIN	CONTAM-INANTS	TOTAL w/cont	TOTAL w/o cont
	ALUM	METAL	GLASS							
2008 Avg:	0.6%	0.3%	18.7%	41.3%	34.0%	2.5%	0.9%	1.9%	100%	
2007 Avg:	0.6%	0.3%	18.7%	41.3%	34.0%	2.5%	0.9%	1.9%	100%	
2006 Avg:	0.6%	0.3%	18.7%	41.3%	34.0%	2.5%	0.9%	1.9%	100%	
2005 Avg:	0.6%	0.3%	18.7%	41.3%	34.0%	2.5%	0.9%	1.9%	100%	
2004 Avg:	0.7%	0.0%	18.3%	40.9%	33.7%	2.3%	1.2%	3.0%	100%	
2003 Avg:	0.7%	0.0%	18.3%	40.9%	33.7%	2.3%	1.2%	3.0%	100%	
2002 Avg:	0.7%	0.0%	18.3%	40.9%	33.7%	2.3%	1.2%	3.0%	100%	
2001 Avg:	0.7%	0.0%	18.3%	40.9%	33.7%	2.3%	1.2%	3.0%	100%	
2000 Avg:	0.8%	0.1%	20.1%	38.5%	34.8%	2.2%	1.1%	3.1%	100%	
1999 Avg:	1.4%	0.1%	20.8%	34.4%	38.7%	1.2%	2.7%	0.8%	100%	
1998 Avg:	1.4%	0.1%	20.8%	34.4%	38.7%	1.2%	2.7%	0.8%	100%	
1997 Avg:	1.4%	0.1%	20.8%	34.4%	38.7%	1.2%	2.7%	0.8%	100%	
1996 Avg:	1.4%	0.1%	20.8%	34.4%	38.7%	1.2%	2.7%	0.8%	100%	
1995 Avg:	1.4%	0.1%	20.8%	34.4%	38.7%	1.2%	2.7%	0.8%	100%	
1994 Avg:	1.4%	0.1%	20.8%	34.4%	38.7%	1.2%	2.7%	0.8%	100%	
1993 Avg:	1.4%	0.1%	20.8%	34.4%	38.7%	1.2%	2.7%	0.8%	100%	
1992 Avg:	2.2%	NA	25.4%	35.8%	30.5%	0.7%	3.5%	1.9%	100%	
1991 Avg:	1.6%	NA	23.7%	43.6%	25.4%	0.6%	4.0%	1.0%	100%	
1990 Avg:	1.4%	NA	19.4%	39.0%	36.4%	0.3%	3.0%	0.5%	100%	
1989 Avg:	1.4%	NA	23.0%	39.7%	32.7%	0.1%	3.0%	0.1%	100%	
1988 Avg:	1.0%	NA	24.2%	35.1%	36.7%	0.0%	2.7%	0.3%	100%	

CURBSIDE RECYCLING PROGRAM

SOUTH END TONNAGE DATA

Yr	Mo	FERROUS		GLASS	MIXED PAPER	NEWS-PAPER	PLASTIC (PET/HDPE)	TIN	CONTAM-INANTS	TOTAL w/cont	TOTAL w/o cont	SET OUTS	ELIGIBLE HOUSEHOLDS ²	POUNDS PER HOUSEHOLD	POUNDS PER SET OUT
		ALUM	METAL												
2007	1	16.0	7.3	580.4	1,427.2	1,132.4	78.8	26.0	71.1	3,339.3	3,268.2	NA	79,820	81.9	NA
2007	2	12.6	5.8	456.3	1,122.2	890.4	62.0	20.5	55.9	2,625.6	2,569.7	NA	79,865	64.4	NA
2007	3	13.5	6.2	487.3	1,198.3	950.8	66.2	21.9	59.7	2,803.8	2,744.1	NA	79,976	68.6	NA
2007	4	13.2	6.1	478.1	1,175.6	932.8	64.9	21.5	58.6	2,750.7	2,692.1	NA	80,130	67.2	NA
2007	5	15.1	6.9	548.4	1,348.5	1,069.9	74.5	24.6	67.2	3,155.1	3,087.9	NA	80,235	77.0	NA
2007	6	13.5	6.2	489.0	1,202.4	954.0	66.4	21.9	59.9	2,813.3	2,753.4	NA	80,319	68.6	NA
2007	7	14.2	6.5	513.8	1,263.5	1,002.5	69.8	23.1	63.0	2,956.3	2,893.3	NA	80,395	72.0	NA
2007	8	15.1	6.9	546.5	1,343.9	1,066.2	74.2	24.5	67.0	3,144.3	3,077.4	NA	80,489	76.5	NA
2007	9	13.0	6.0	470.9	1,158.0	918.7	63.9	21.1	57.7	2,709.3	2,651.6	NA	80,510	65.9	NA
2007	10	14.6	6.7	530.0	1,303.3	1,034.1	72.0	23.8	65.0	3,049.4	2,984.5	NA	80,568	74.1	NA
2007	11	14.5	6.7	526.2	1,294.0	1,026.7	71.5	23.6	64.5	3,027.6	2,963.1	NA	80,571	73.6	NA
2007	12	15.3	7.0	553.9	1,362.0	1,080.6	75.2	24.9	67.9	3,186.8	3,118.9	NA	80,609	77.4	NA
2008	1	16.1	7.4	582.6	1,432.8	1,136.8	79.1	26.1	71.4	3,352.3	3,280.9	NA	80,663	81.3	NA
2008	2	12.7	5.8	458.5	1,127.5	894.5	62.3	20.6	56.2	2,638.0	2,581.8	NA	80,690	64.0	NA
2008	3	12.7	5.8	460.4	1,132.3	898.3	62.5	20.7	56.4	2,649.2	2,592.8	NA	80,793	64.2	NA
2008	4	13.9	6.4	504.6	1,240.9	984.6	68.5	22.6	61.8	2,903.5	2,841.6	NA	80,976	70.2	NA
2008	5	13.4	6.1	485.1	1,192.9	946.5	65.9	21.8	59.5	2,791.1	2,731.7	NA	81,120	67.3	NA
2008	6	12.9	5.9	468.2	1,151.4	913.5	63.6	21.0	57.4	2,693.9	2,636.5	NA	81,254	64.9	NA
2008	7	14.3	6.5	516.0	1,268.9	1,006.8	70.1	23.2	63.2	2,969.0	2,905.7	NA	81,351	71.4	NA
2008	8	13.2	6.0	476.2	1,171.0	929.1	64.7	21.4	58.4	2,739.8	2,681.5	NA	81,442	65.9	NA
2008	9	13.6	6.2	492.4	1,210.8	960.6	66.9	22.1	60.3	2,832.9	2,772.6	NA	81,549	68.0	NA
2008	10	13.7	6.3	497.3	1,223.0	970.3	67.5	22.3	60.9	2,861.5	2,800.5	NA	81,555	68.7	NA
2008	11	12.5	5.7	451.8	1,111.0	881.4	61.3	20.3	55.4	2,599.4	2,544.0	NA	81,591	62.4	NA
2008	12	13.6	6.2	491.5	1,208.7	959.0	66.7	22.1	60.2	2,828.1	2,767.9	NA	81,685	67.8	NA
2008 Total:		162.5	74.5	5,884.6	14,471.2	11,481.5	799.1	264.1	721.2	33,858.6	33,137.4		2008 Avg:	68.0	NA
2007 Total:		170.7	78.2	6,180.6	15,199.0	12,058.9	839.3	277.4	757.5	35,561.5	34,804.0		2007 Avg:	72.2	NA
2006 Total:		168.0	77.0	6,082.7	14,958.2	11,867.9	826.0	273.0	745.5	34,998.2	34,252.7		2006 Avg:	71.8	NA
2005 Total:		162.4	74.4	5,878.5	14,456.1	11,469.5	798.2	263.8	720.4	33,823.5	33,103.0		2005 Avg:	70.0	NA
2004 Total:		202.2	72.9	5,236.3	13,485.1	11,437.0	742.4	354.6	1,607.3	33,137.8	31,530.4		2004 Avg:	67.3	NA
2003 Total:		195.5	70.5	5,062.8	13,038.4	11,058.1	717.8	342.9	1,554.1	32,040.0	30,485.9		2003 Avg:	65.7	NA
2002 Total:		192.9	69.6	4,997.0	12,868.9	10,914.4	708.4	338.4	1,533.9	31,623.6	30,089.7		2002 Avg:	65.4	NA
2001 Total:		191.6	69.1	4,962.4	12,779.7	10,838.8	703.5	336.1	1,523.3	31,404.4	29,881.2		2001 Avg:	63.4	NA
2000 Total:		221.5	64.7	5,538.6	12,665.2	11,347.8	724.6	396.2	1,439.5	32,398.0	30,958.5		2000 Avg:	65.7	NA
1999 Total:		323.5	35.9	5,639.7	10,743.8	10,290.1	314.6	487.5	755.2	28,590.2	27,835.1		1999 Avg:	59.1	74.8
1998 Total:		316.4	35.2	5,516.6	10,509.2	10,065.4	307.7	476.9	738.7	27,965.9	27,227.2		1998 Avg:	57.8	71.8
1997 Total:		304.9	33.9	5,316.2	10,127.4	9,699.7	296.5	459.6	711.9	26,950.1	26,238.2		1997 Avg:	55.7	67.4
1996 Total:		284.7	31.6	4,963.1	9,454.8	9,055.5	276.8	429.1	664.6	25,160.2	24,495.6		1996 Avg:	52.0	63.2
1995 Total:		292.5	32.5	5,099.1	9,713.8	9,303.6	284.4	440.8	682.8	25,849.4	25,166.6		1995 Avg:	53.2	66.6
1994 Total:		288.4	32.0	5,027.6	9,577.7	9,173.3	280.4	434.6	673.2	25,487.3	24,814.1		1994 Avg:	52.7	67.5
1993 Total:		273.2	30.4	4,763.7	9,074.9	8,691.7	228.5	411.8	637.9	24,149.3	23,474.2		1993 Avg:	49.8	71.6
1992 Total:		287.6	NA	4,106.5	8,321.5	9,497.9	106.1	492.7	761.4	23,573.7	22,812.3		1992 Avg:	48.4	68.5
1991 Total:		274.0	NA	3,579.1	8,421.4	9,562.4	110.4	419.7	751.9	23,118.9	22,367.0		1991 Avg:	47.5	70.1
1990 Total:		236.6	NA	4,222.7	7,514.0	8,315.8	99.0	561.4	570.1	21,519.6	20,949.5		1990 Avg:	43.9	72.3
1989 Total:		113.1	NA	3,374.9	6,030.9	7,590.8	75.6	601.9	90.0	17,877.2	17,787.2		1989 Avg:	36.2	70.2
1988 Total:		82.9	NA	1,259.1	2,553.0	5,069.9	0.0	257.0	0.0	9,221.9	9,221.9		1988 Avg:	25.0	74.9

SOUTH END PERCENTAGE BREAKDOWN BY MATERIAL

YEAR	FERROUS		GLASS	MIXED PAPER	NEWS-PAPER	PLASTIC (PET/HDPE)	TIN	CONTAM-INANTS	TOTAL w/cont
	ALUM	METAL							
2008 Avg:	0.5%	0.2%	17.4%	42.7%	33.9%	2.4%	0.8%	2.1%	100%
2007 Avg:	0.5%	0.2%	17.4%	42.7%	33.9%	2.4%	0.8%	2.1%	100%
2006 Avg:	0.5%	0.2%	17.4%	42.7%	33.9%	2.4%	0.8%	2.1%	100%
2005 Avg:	0.5%	0.2%	17.4%	42.7%	33.9%	2.4%	0.8%	2.1%	100%
2004 Avg:	0.6%	0.2%	15.8%	40.7%	34.5%	2.2%	1.1%	4.9%	100%
2003 Avg:	0.6%	0.2%	15.8%	40.7%	34.5%	2.2%	1.1%	4.9%	100%
2002 Avg:	0.6%	0.2%	15.8%	40.7%	34.5%	2.2%	1.1%	4.9%	100%
2001 Avg:	0.6%	0.2%	15.8%	40.7%	34.5%	2.2%	1.1%	4.9%	100%
2000 Avg:	0.7%	0.2%	17.1%	39.1%	35.0%	2.2%	1.2%	4.4%	100%
1999 Avg:	1.1%	0.1%	19.7%	37.6%	36.0%	1.1%	1.7%	2.6%	100%
1998 Avg:	1.1%	0.1%	19.7%	37.6%	36.0%	1.1%	1.7%	2.6%	100%
1997 Avg:	1.1%	0.1%	19.7%	37.6%	36.0%	1.1%	1.7%	2.6%	100%
1996 Avg:	1.1%	0.1%	19.7%	37.6%	36.0%	1.1%	1.7%	2.6%	100%
1995 Avg:	1.1%	0.1%	19.7%	37.6%	36.0%	1.1%	1.7%	2.6%	100%
1994 Avg:	1.1%	0.1%	19.7%	37.6%	36.0%	1.1%	1.7%	2.6%	100%
1993 Avg:	1.2%	0.1%	19.2%	37.1%	37.1%	0.9%	1.8%	2.8%	100%
1992 Avg:	1.2%	NA	17.4%	35.3%	40.3%	0.5%	2.1%	3.2%	100%
1991 Avg:	1.2%	NA	15.5%	36.4%	41.4%	0.5%	1.8%	3.3%	100%
1990 Avg:	1.1%	NA	19.6%	34.9%	38.6%	0.5%	2.6%	2.7%	100%
1989 Avg:	0.6%	NA	18.9%	33.7%	42.5%	0.4%	3.4%	0.5%	100%
1988 Avg:	0.9%	NA	13.7%	27.7%	55.0%	0.0%	2.8%	0.0%	100%

CURBSIDE RECYCLING PROGRAM

TOTAL CITY TONNAGE DATA

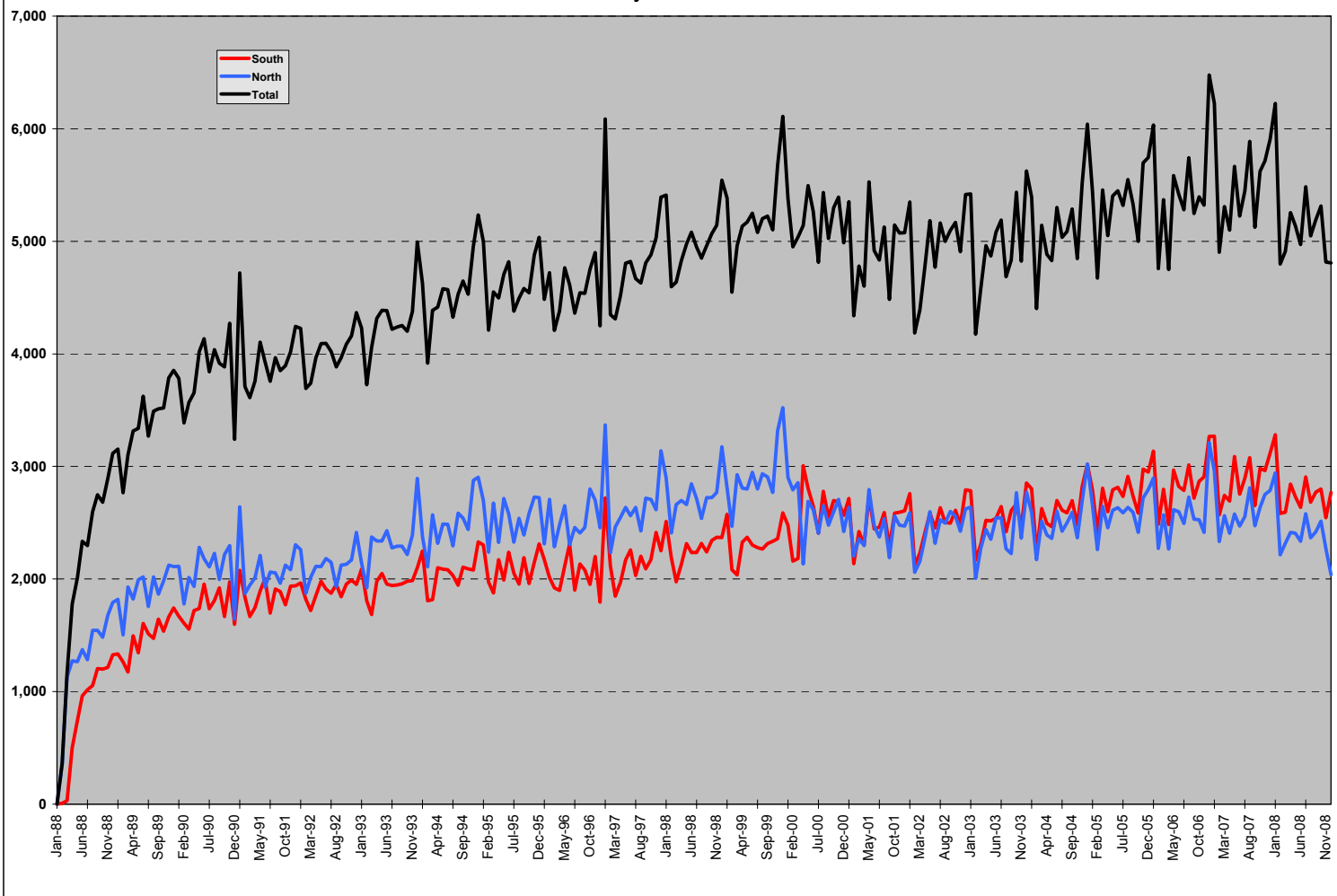
Yr	Mo	ALUM	FERROUS METAL	GLASS	MIXED PAPER	NEWS-PAPER	PLASTIC (PET/HDPE)	TIN	CONTAM-INANTS	TOTAL w/cont	TOTAL w/o cont	SET OUTS	ELIGIBLE HOUSEHOLDS*	POUNDS PER HOUSEHOLD
2007	1	33.2	15.2	1,142.4	2,671.2	2,157.9	152.6	52.9	127.5	6,352.8	6,225.3	NA	150,874	82.5
2007	2	26.1	12.0	899.6	2,103.3	1,699.1	120.2	41.6	100.4	5,002.2	4,901.9	NA	150,988	64.9
2007	3	28.3	13.0	974.4	2,276.6	1,839.6	130.2	45.1	108.6	5,415.8	5,307.2	NA	151,171	70.2
2007	4	27.2	12.4	935.3	2,187.6	1,767.0	125.0	43.3	104.4	5,202.2	5,097.7	NA	151,430	67.3
2007	5	30.1	13.8	1,038.4	2,433.2	1,964.1	138.8	48.0	116.3	5,782.7	5,666.4	NA	151,633	74.7
2007	6	27.9	12.7	958.6	2,242.0	1,811.0	128.1	44.4	107.0	5,331.7	5,224.7	NA	151,784	68.8
2007	7	29.0	13.3	999.1	2,337.6	1,887.9	133.5	46.2	111.6	5,558.2	5,446.6	NA	151,937	71.7
2007	8	31.4	14.4	1,080.3	2,525.4	2,040.3	144.3	50.0	120.5	6,006.6	5,886.1	NA	152,090	77.4
2007	9	27.4	12.5	940.7	2,197.9	1,776.0	125.7	43.6	104.8	5,228.6	5,123.7	NA	152,104	67.4
2007	10	30.0	13.7	1,031.2	2,412.6	1,948.5	137.8	47.7	115.2	5,736.6	5,621.4	NA	152,165	73.9
2007	11	30.5	13.9	1,048.8	2,450.8	1,980.3	140.1	48.6	116.9	5,829.9	5,713.0	NA	152,171	75.1
2007	12	31.5	14.4	1,083.6	2,534.6	2,047.3	144.8	50.1	121.0	6,027.4	5,906.4	NA	152,247	77.6
2008	1	33.2	15.2	1,142.0	2,670.8	2,157.3	152.6	52.8	127.5	6,351.4	6,223.9	NA	152,290	81.7
2008	2	25.5	11.7	879.6	2,059.5	1,662.9	117.6	40.7	98.4	4,895.8	4,797.4	NA	152,377	63.0
2008	3	26.2	12.0	900.6	2,106.5	1,701.5	120.3	41.7	100.6	5,009.3	4,908.7	NA	152,510	64.4
2008	4	28.0	12.8	963.3	2,256.2	1,821.5	128.8	44.5	107.8	5,362.9	5,255.1	NA	152,825	68.8
2008	5	27.4	12.5	942.5	2,205.2	1,781.0	126.0	43.6	105.3	5,243.4	5,138.1	NA	153,072	67.1
2008	6	26.5	12.1	912.0	2,133.7	1,723.3	121.9	42.2	101.9	5,073.6	4,971.7	NA	153,290	64.9
2008	7	29.2	13.4	1,006.2	2,354.0	1,901.3	134.5	46.6	112.4	5,597.6	5,485.2	NA	153,487	71.5
2008	8	26.9	12.3	925.9	2,166.3	1,749.6	123.7	42.8	103.4	5,151.0	5,047.5	NA	153,651	65.7
2008	9	27.6	12.6	952.0	2,228.2	1,799.4	127.2	44.0	106.4	5,297.6	5,191.1	NA	153,813	67.5
2008	10	28.3	13.0	975.1	2,280.5	1,842.1	130.3	45.1	108.9	5,423.2	5,314.3	NA	153,837	69.1
2008	11	25.7	11.7	883.6	2,066.8	1,669.4	118.1	40.9	98.7	4,914.8	4,816.2	NA	153,909	62.6
2008	12	25.4	11.6	879.1	2,066.6	1,666.2	117.7	40.6	99.1	4,906.2	4,807.1	NA	154,067	62.4
2008 Total:		329.9	150.8	11,361.8	26,594.3	21,475.4	1,518.6	525.5	1,270.4	63,226.7	61,956.3		2008 Avg:	67.8
2007 Total:		352.6	161.2	12,132.4	28,372.8	22,919.0	1,621.1	561.4	1,354.2	67,474.7	66,120.5		2007 Avg:	72.6
2006 Total:		348.7	159.4	11,996.9	28,048.8	22,659.4	1,602.9	555.2	1,338.5	66,709.9	65,371.5		2006 Avg:	72.5
2005 Total:		342.4	156.5	11,770.0	27,496.3	22,219.5	1,572.2	545.0	1,311.2	65,413.1	64,101.9		2005 Avg:	71.5
2004 Total:		414.1	88.5	10,929.5	26,217.6	21,932.1	1,452.8	725.4	2,542.2	64,302.2	61,760.0		2004 Avg:	69.8
2003 Total:		400.1	85.5	10,560.2	25,333.0	21,192.3	1,403.8	700.9	2,456.8	62,132.5	59,675.7		2003 Avg:	67.7
2002 Total:		398.4	84.7	10,518.2	25,216.8	21,092.5	1,397.5	698.0	2,440.5	61,846.6	59,406.1		2002 Avg:	67.9
2001 Total:		397.4	84.2	10,493.3	25,149.3	21,034.7	1,393.8	696.3	2,431.5	61,680.4	59,249.0		2001 Avg:	66.6
2000 Total:		490.2	85.5	11,963.1	24,986.6	22,499.7	1,442.1	747.8	2,432.2	64,410.0	62,215.0		2000 Avg:	69.9
1999 Total:		799.6	81.8	12,969.2	22,870.2	23,947.3	727.3	1,439.9	1,026.8	63,862.0	62,835.2		1999 Avg:	70.6
1998 Total:		762.8	78.2	12,387.9	21,877.6	22,868.9	694.6	1,369.7	993.3	61,032.7	60,039.4		1998 Avg:	67.5
1997 Total:		741.0	75.9	12,029.0	21,233.7	22,208.0	674.5	1,331.8	960.6	59,254.5	58,293.9		1997 Avg:	67.5
1996 Total:		693.1	71.0	11,249.4	19,855.4	20,769.0	630.8	1,245.9	897.5	55,412.0	54,514.5		1996 Avg:	61.3
1995 Total:		707.7	72.5	11,490.8	20,288.7	21,213.5	644.3	1,271.3	919.6	56,608.4	55,688.7		1995 Avg:	63.1
1994 Total:		696.3	71.3	11,307.4	19,967.5	20,874.6	634.0	1,250.6	905.9	55,707.7	54,801.8		1994 Avg:	61.6
1993 Total:		652.8	66.9	10,606.8	18,742.1	19,579.3	557.5	1,171.0	854.4	52,268.0	51,376.4		1993 Avg:	57.7
1992 Total:		862.8	NA	10,702.0	17,610.6	17,412.9	288.8	1,409.9	1,259.6	49,546.6	48,287.0		1992 Avg:	54.2
1991 Total:		684.6	NA	9,540.4	19,537.8	16,103.2	268.3	1,423.7	1,004.4	48,562.4	47,558.0		1991 Avg:	53.4
1990 Total:		895.1	NA	9,096.9	17,201.8	17,373.0	163.1	1,306.8	685.9	46,722.6	46,036.7		1990 Avg:	51.3
1989 Total:		433.2	NA	8,671.4	15,149.6	15,115.6	88.9	1,279.9	121.0	40,859.6	40,738.6		1989 Avg:	46.2
1988 Total:		242.3	NA	4,833.6	7,739.7	10,481.4	0.0	649.2	39.4	23,985.6	23,946.2		1988 Avg:	31.9

TOTAL CITY PERCENTAGE BREAKDOWN BY MATERIAL

YEAR	ALUM	FERROUS METAL	GLASS	MIXED PAPER	NEWS-PAPER	PLASTIC (PET/HDPE)	TIN	CONTAM-INANTS	TOTAL w/cont
2008 Avg:	0.5%	0.2%	18.0%	42.1%	34.0%	2.4%	0.8%	2.0%	100%
2007 Avg:	0.5%	0.2%	18.0%	42.0%	34.0%	2.4%	0.8%	2.0%	100%
2006 Avg:	0.5%	0.2%	18.0%	42.0%	34.0%	2.4%	0.8%	2.0%	100%
2005 Avg:	0.5%	0.2%	18.0%	42.0%	34.0%	2.4%	0.8%	2.0%	100%
2004 Avg:	0.6%	0.1%	17.0%	40.8%	34.1%	2.3%	1.1%	4.0%	100%
2003 Avg:	0.6%	0.1%	17.0%	40.8%	34.1%	2.3%	1.1%	4.0%	100%
2002 Avg:	0.6%	0.1%	17.0%	40.8%	34.1%	2.3%	1.1%	3.9%	100%
2001 Avg:	0.6%	0.1%	17.0%	40.8%	34.1%	2.3%	1.1%	3.9%	100%
2000 Avg:	0.8%	0.1%	18.6%	38.8%	34.9%	2.2%	1.2%	3.8%	100%
1999 Avg:	1.3%	0.1%	20.3%	35.8%	37.5%	1.1%	2.3%	1.6%	100%
1998 Avg:	1.2%	0.1%	20.3%	35.8%	37.5%	1.1%	2.2%	1.6%	100%
1997 Avg:	1.3%	0.1%	20.3%	35.8%	37.5%	1.1%	2.2%	1.6%	100%
1996 Avg:	1.3%	0.1%	20.3%	35.8%	37.5%	1.1%	2.2%	1.6%	100%
1995 Avg:	1.3%	0.1%	20.3%	35.8%	37.5%	1.1%	2.2%	1.6%	100%
1994 Avg:	1.2%	0.1%	20.3%	35.8%	37.5%	1.1%	2.2%	1.6%	100%
1993 Avg:	1.2%	0.1%	20.3%	35.9%	37.5%	1.1%	2.2%	1.6%	100%
1992 Avg:	1.7%	NA	21.6%	35.5%	35.1%	0.6%	2.8%	2.5%	100%
1991 Avg:	1.4%	NA	19.6%	40.2%	33.2%	0.6%	2.9%	2.1%	100%
1990 Avg:	1.9%	NA	19.5%	36.8%	37.2%	0.3%	2.8%	1.5%	100%
1989 Avg:	1.1%	NA	21.2%	37.1%	37.0%	0.2%	3.1%	0.3%	100%
1988 Avg:	1.0%	NA	20.2%	32.3%	43.7%	0.0%	2.7%	0.2%	100%

1. Part of the decline in total tons collected for Nov. and Dec. 2000 may be attributed to the newspaper strike which extended from Nov. 21, 2000 - Jan. 9, 2001
 2. Beginning Jan 1, 2002 household data based on new billing system (Banner)

**CURBSIDE RECYCLING
Monthly Tons Collected**



**CURBSIDE RECYCLING
Cumulative Tons Collected 2008**

