

GARBAGE REPORT

December 2007

Seattle Public Utilities, Utility Systems Management, Cross Line of Business Economic Services Section

Report Date: January 28, 2008 (Revised May 20, 2008)

Phone: (206) 684-4143

Total City Tonnage Breakdown

| | | | |
|--|--------------|-------|----------------------------------|
| Self Haul Cars ¹ in December: | 522 Tons | 15.8% | decrease vs. same period in 2006 |
| 2007 Cumulative Self Haul Cars: | 6,755 Tons | 12.4% | decrease vs. same period in 2006 |
| Self Haul Trucks ² in December: | 6,689 Tons | 10.3% | decrease vs. same period in 2006 |
| 2007 Cumulative Self Haul Trucks: | 100,343 Tons | 4.8% | increase vs. same period in 2006 |
| 2007 Cumulative Self Haul Cars & Trucks: | 107,098 Tons | 3.5% | increase vs. same period in 2006 |
| Residential Collection in December: | 10,838 Tons | 10.2% | decrease vs. same period in 2006 |
| 2007 Cumulative Residential Collection: | 133,341 Tons | 0.2% | decrease vs. same period in 2006 |
| Commercial Tons in December: | 16,012 Tons | 5.1% | decrease vs. same period in 2006 |
| 2007 Cumulative Commercial Tons: | 198,968 Tons | 1.1% | decrease vs. same period in 2006 |
| Total Tons Disposed in December: | 34,061 Tons | 8.0% | decrease vs. same period in 2006 |
| 2007 Cumulative Total Tons Disposed: | 439,407 Tons | 0.3% | increase vs. same period in 2006 |

Selected Statistics for Residential Collection Service

Cumulative Residential Collection Tons through December 2007:

| | | | |
|--------------------------------|-------------|------|----------------------------------|
| Collected by Waste Management: | 50,166 Tons | 1.0% | decrease vs. same period in 2006 |
| Collected by Rabanco: | 82,039 Tons | 1.1% | decrease vs. same period in 2006 |

Recycling & Disposal Station Self Haul Garbage Rates³:

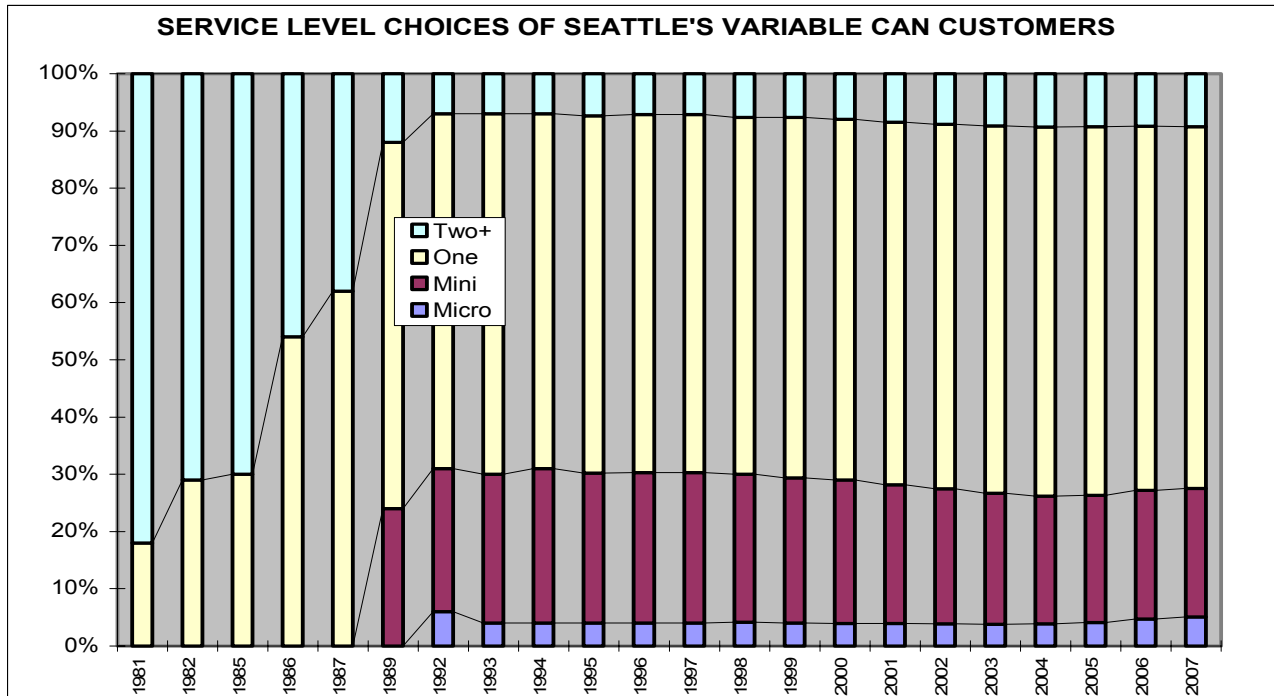
Cars: \$20.00 per trip Trucks: \$110.00 per ton (\$20.00 minimum)

¹ Car tons calculated based on 378.8 pounds per car for 2001 & 2002 according to study done from Jan-Dec 2000

² An estimated 53% of the self -haul truck tons are commercial according to a waste stream sampling study conducted in 2000.

³ Vans & pickup trucks pay the per ton truck rate.

Variable Can Customer Service Levels



| | Micro | Mini | One | Two+ |
|-------------|-------|--------|--------|--------|
| 1981 | | | 18.00% | 82.00% |
| 1982 | | | 29.00% | 71.00% |
| 1985 | | | 30.00% | 70.00% |
| 1986 | | | 54.00% | 46.00% |
| 1987 | | | 62.00% | 38.00% |
| 1989 | | 24.00% | 64.00% | 12.00% |
| 1992 | 6.00% | 25.00% | 62.00% | 7.00% |
| 1993 | 4.00% | 26.00% | 63.00% | 7.00% |
| 1994 | 4.00% | 27.00% | 62.00% | 7.00% |
| 1995 | 4.06% | 26.15% | 62.44% | 7.35% |
| 1996 | 4.04% | 26.23% | 62.59% | 7.14% |
| 1997 | 4.04% | 26.23% | 62.59% | 7.14% |
| 1998 | 4.16% | 25.88% | 62.35% | 7.61% |
| 1999 | 4.06% | 25.60% | 63.62% | 7.72% |
| 2000 | 3.93% | 25.08% | 63.02% | 7.97% |
| 2001 | 3.95% | 24.18% | 63.16% | 8.71% |
| 2002 | 3.84% | 23.57% | 63.58% | 9.02% |
| 2003 | 3.83% | 22.81% | 64.10% | 9.26% |
| 2004 | 3.85% | 22.27% | 64.42% | 9.46% |
| 2005 | 4.12% | 22.18% | 64.27% | 9.43% |
| 2006 | 4.72% | 22.49% | 63.57% | 9.21% |
| 2007 | 5.05% | 22.50% | 63.17% | 9.26% |

Monthly Variable Can Rates:

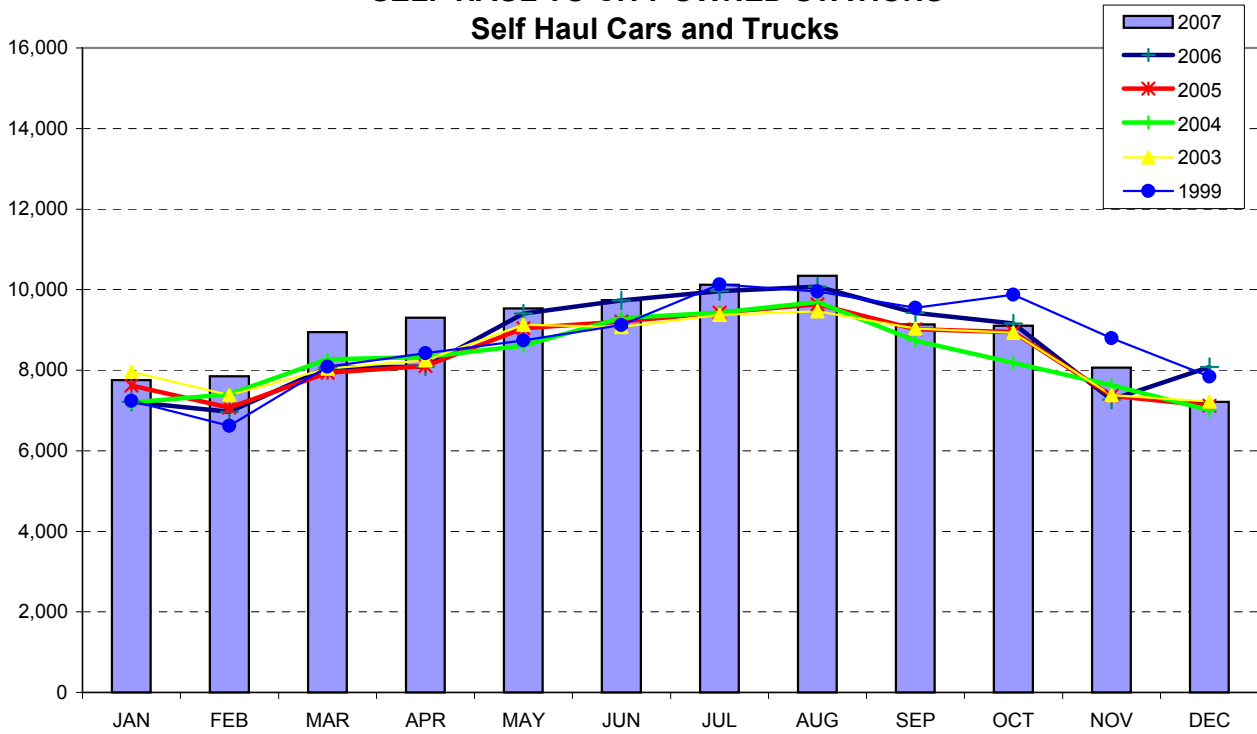
| | |
|-------------------|---------|
| Micro (12 gal) | \$10.35 |
| Mini (19 gal) | \$12.70 |
| One Can (32 gal) | \$16.55 |
| Two Cans (64 gal) | \$33.10 |
| Each Add'l Can | \$16.55 |

Residential Dumpster Service⁴

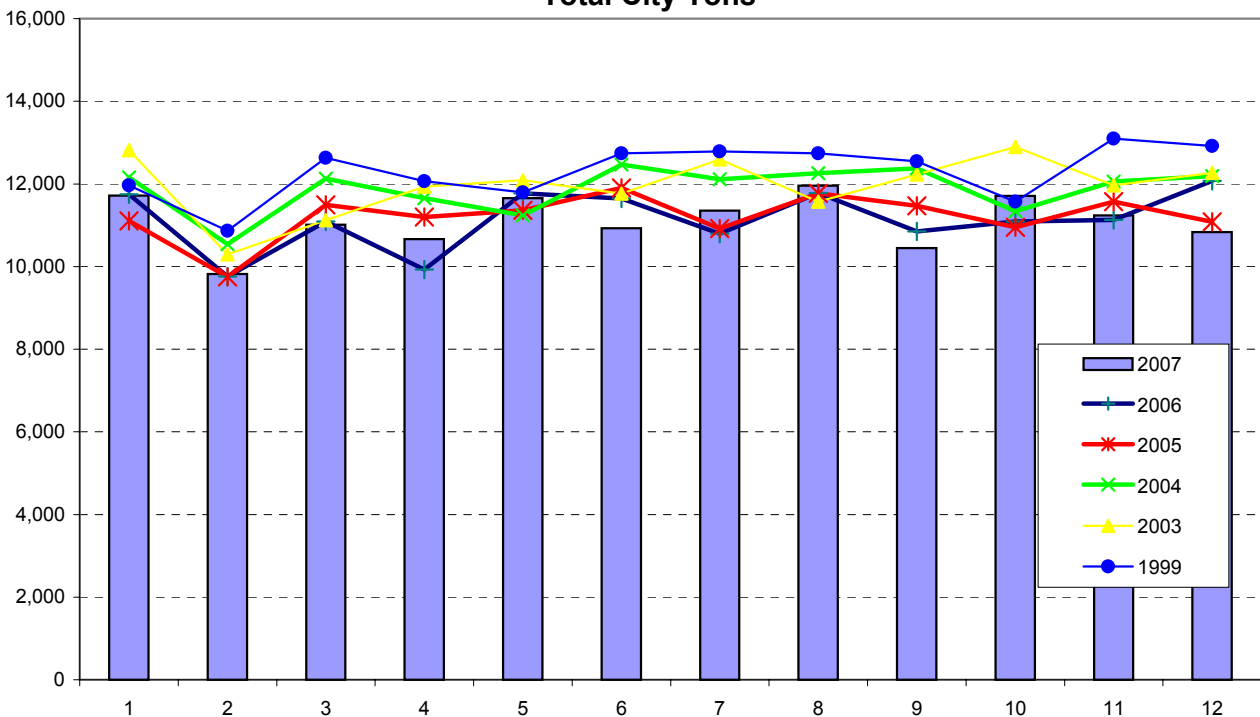
Most Common Monthly Rate
\$105.10 (+ \$.60 per unit)

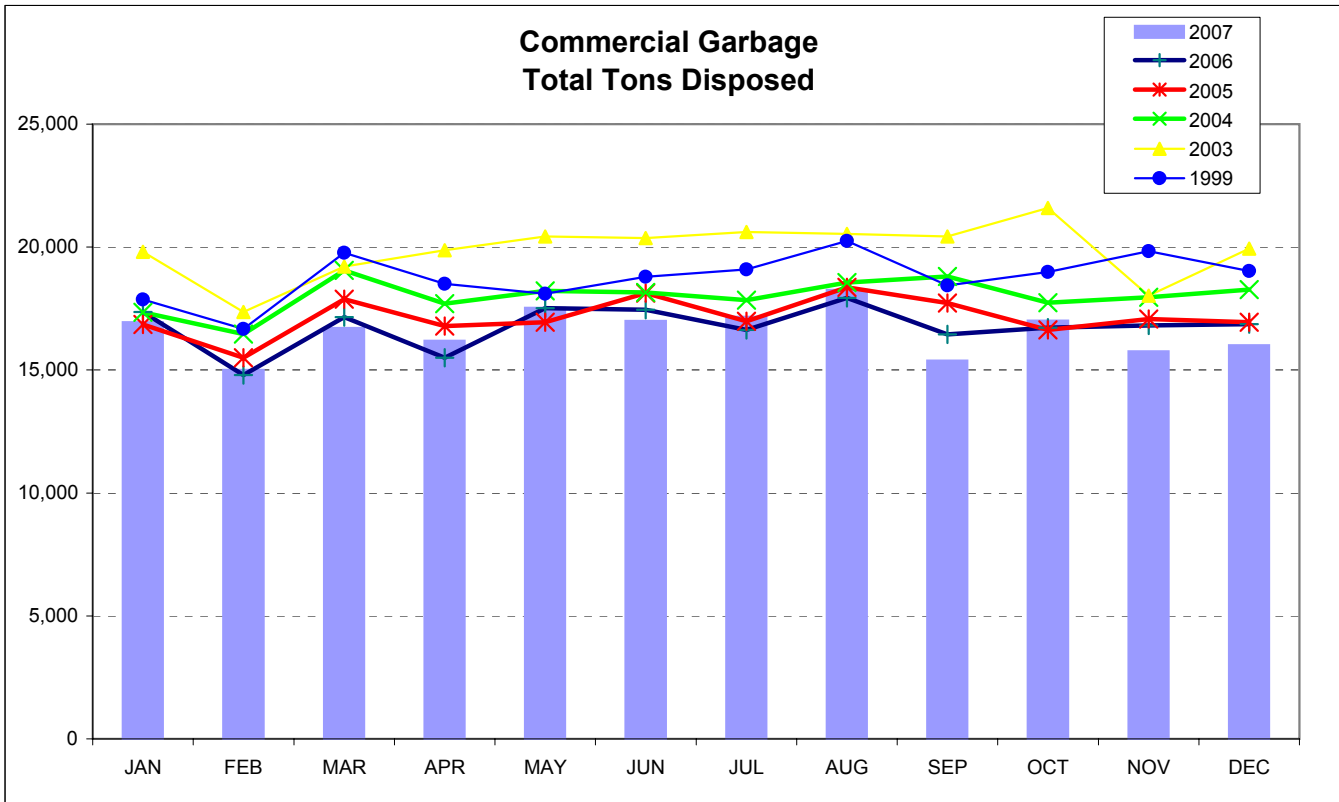
⁴ This is the rate for a one cubic yard container picked up once per week, which is the most common dumpster service level. Residential dumpster service rates vary based on the number and size of containers, the number of pickups per week, and the number of dwelling units.

SELF HAUL TO CITY OWNED STATIONS Self Haul Cars and Trucks

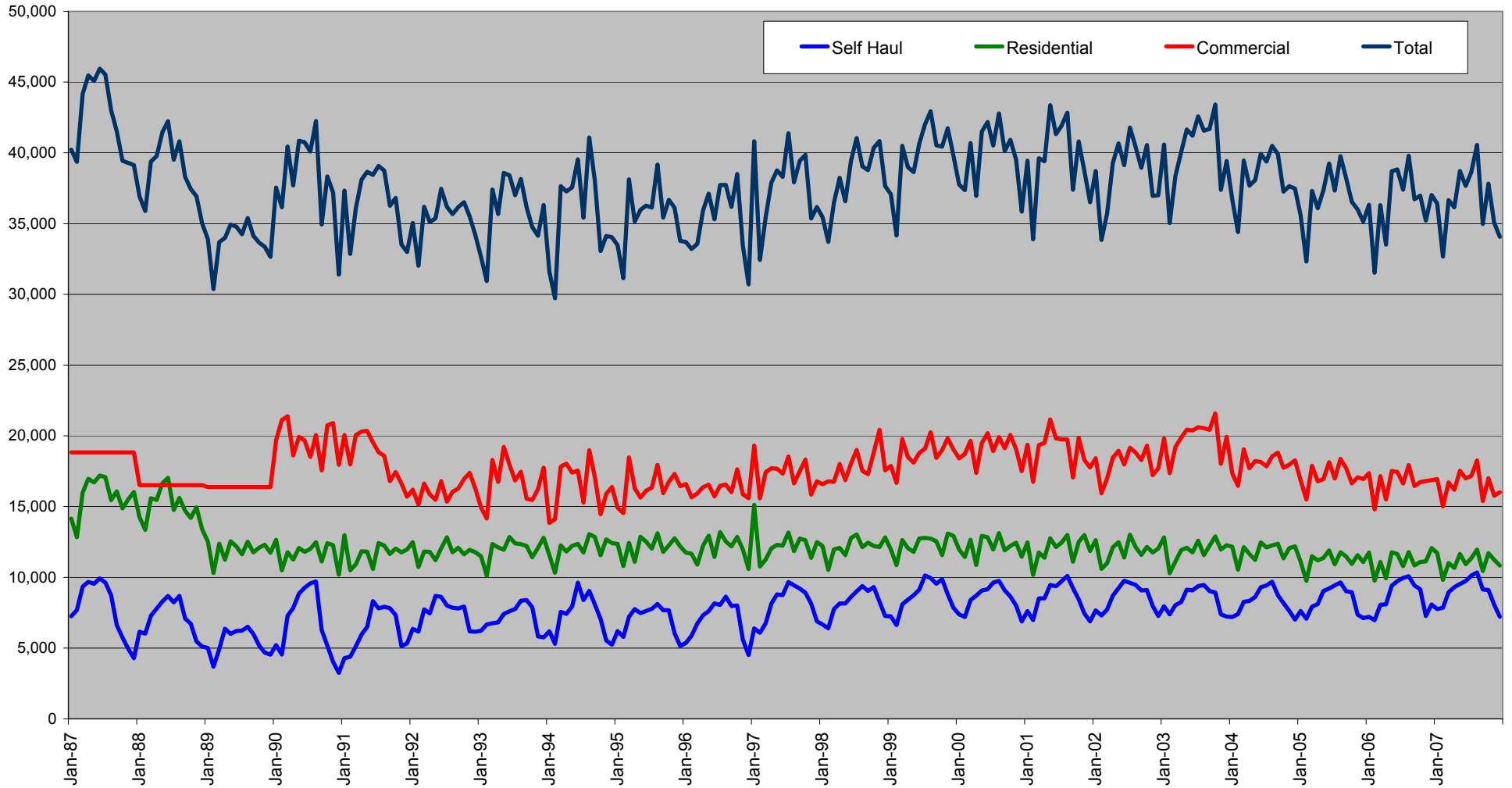


RESIDENTIAL COLLECTION Total City Tons





City of Seattle Garbage Disposal



Monthly commercial tonnage for 1987-1989 estimated from annual data.

