

APARTMENT RECYCLING REPORT

December 2006

Seattle Public Utilities, Strategic Asset Management Division, Asset Management Economic Services Section

Report Date: March 5, 2007

Phone: (206) 684-4143

Tonnage Summary (without contaminants)

North End Tons (WM):

December 2006:	717 Tons	20.3% increase vs. same period in 2005
Cumulative North end:	7,221 Tons	11.6% increase vs. same period in 2005

South End Tons (USD):

December 2006:	1,169 Tons	12.5% increase vs. same period in 2005
Cumulative South end:	11,938 Tons	7.4% increase vs. same period in 2005

Citywide Tons:

December 2006:	1,886 Tons	15.3% increase vs. same period in 2005
Cumulative Citywide:	19,159 Tons	9.0% increase vs. same period in 2005

Basics of City-Sponsored Apartment Recycling Program

The Apartment Recycle Program includes a minimum of biweekly collection for all apartment buildings requesting service. Apartment buildings can choose either recycle dumpster service or single-family style curbside service using recycle carts. As of January 2005, residents are prohibited from putting significant amounts of paper, cardboard, glass and plastic bottles and jars as well as aluminum and tin cans in their garbage containers. "Significant amount" is defined as 10% or more of the volume of the garbage container. Beginning January 2006, apartment managers will be subject to a fine for repeated violation of the ban on recyclables in the garbage ordinance.

Service Areas:

North End: Waste Management services the area north of the Ship Canal.
South End: USD services the area south of the Ship Canal.

Materials:

Commingled collection with a separate container for glass.
Service must include collection of aluminum, glass, mixed paper, newspaper, tin, plastic, plastic bags, plastic food tubs, as well as milk & juice cartons.

Subscription Status as of December 2006:

	Buildings Signed Up	Units Signed Up	Eligible Buildings	Eligible Units	% Bldgs Signed Up	% Units Signed Up
North End	2,082	37,067	2,145	37,944	97.1%	97.7%
South End	3,196	74,676	3,410	79,955	93.7%	93.4%
Citywide	5,278	111,743	5,555	117,899	95.0%	94.8%

Service Type Details as of December 2006:

Multi-Family buildings with dumpster garbage service can choose either apartment recycling service or single-family style curbside service. Most buildings with five or fewer units choose single-family style curbside service.

	Bldgs with Curb Recycling	Bldgs with Apt Recycling	Total Buildings with Recycling	Units with Curb Recycling	Units with Apt Recycling	Total Units with Recycling
North End	255	1,827	2,082	1,211	35,856	37,067
South End	436	2,760	3,196	2,482	72,194	74,676
Citywide	691	4,587	5,278	3,693	108,050	111,743

APARTMENT RECYCLING PROGRAM

NORTH END TONNAGE DATA												Sign-Up Data ¹				
Yr	Mo	ALUM	FERROUS METAL	GLASS	MIXED PAPER	NEWS-PAPER	PLASTIC (PET/HDPE)	TIN	CONTAM-INANTS	TOTAL w/cont	TOTAL w/o cont	Bldgs	Units	Units/ Bldg	Lbs/ Bldg	Lbs/ Unit
2005	1	2.5	5.0	98.8	222.6	164.0	11.5	4.0	13.4	521.8	508.4	1,729	33,476	19.4	588.1	30.4
2005	2	2.3	4.6	90.9	204.8	150.9	10.6	3.6	12.3	480.1	467.8	1,736	33,603	19.4	538.9	27.8
2005	3	2.7	5.3	104.8	236.1	174.0	12.2	4.2	14.2	553.5	539.2	1,759	34,097	19.4	613.1	31.6
2005	4	2.5	4.9	97.3	219.2	161.5	11.3	3.9	13.2	513.8	500.6	1,763	34,106	19.3	567.9	29.4
2005	5	2.7	5.3	105.3	237.2	174.8	12.2	4.2	14.3	556.0	541.7	1,770	34,100	19.3	612.1	31.8
2005	6	2.7	5.4	106.7	240.4	177.1	12.4	4.3	14.5	563.6	549.1	1,789	34,405	19.2	613.9	31.9
2005	7	2.5	5.1	100.1	225.5	166.1	11.6	4.0	13.6	528.6	515.0	1,792	34,525	19.3	574.8	29.8
2005	8	2.9	5.7	112.8	254.1	187.2	13.1	4.5	15.3	595.7	580.4	1,800	34,611	19.2	644.9	33.5
2005	9	2.7	5.4	106.1	238.9	176.0	12.3	4.3	14.4	560.0	545.6	1,792	34,485	19.2	608.9	31.6
2005	10	2.4	4.7	93.6	210.8	155.3	10.9	3.8	12.7	494.2	481.5	1,795	34,542	19.2	536.4	27.9
2005	11	3.2	6.3	124.9	281.4	207.3	14.5	5.0	17.0	659.6	642.6	1,802	34,861	19.3	713.2	36.9
2005	12	2.9	5.9	115.9	261.1	192.3	13.5	4.7	15.7	612.0	596.3	1,810	35,005	19.3	658.9	34.1
2006	1	3.2	6.4	126.7	285.3	210.2	14.7	5.1	17.2	668.8	651.6	1,819	35,217	19.4	716.4	37.0
2006	2	2.7	5.3	105.5	237.7	175.1	12.3	4.2	14.3	557.2	542.9	1,823	35,388	19.4	595.6	30.7
2006	3	2.9	5.9	116.1	261.5	192.7	13.5	4.7	15.8	613.0	597.3	1,820	35,363	19.4	656.3	33.8
2006	4	2.5	5.1	100.0	225.1	165.9	11.6	4.0	13.6	527.7	514.2	1,825	35,407	19.4	563.5	29.0
2006	5	2.9	5.9	115.7	260.5	192.0	13.4	4.6	15.7	610.8	595.1	1,828	35,576	19.5	651.0	33.5
2006	6	3.0	6.0	117.8	265.4	195.5	13.7	4.7	16.0	622.1	606.1	1,829	35,763	19.6	662.8	33.9
2006	7	2.8	5.5	109.5	246.6	181.7	12.7	4.4	14.9	578.1	563.2	1,830	35,866	19.6	615.5	31.4
2006	8	3.1	6.3	123.4	277.9	204.8	14.3	5.0	16.7	651.5	634.8	1,831	35,944	19.6	693.4	35.3
2006	9	2.8	5.7	112.2	252.6	186.1	13.0	4.5	15.2	592.2	577.0	1,834	35,940	19.6	629.2	32.1
2006	10	2.9	5.8	114.5	258.0	190.1	13.3	4.6	15.5	604.7	589.1	1,830	35,897	19.6	643.9	32.8
2006	11	3.1	6.2	123.0	277.1	204.2	14.3	4.9	16.7	649.6	632.9	1,829	35,885	19.6	692.1	35.3
2006	12	3.5	7.1	139.4	314.0	231.4	16.2	5.6	18.9	736.1	717.2	1,827	35,856	19.6	785.1	40.0
2006 Total:		35.6	71.2	1,403.8	3,161.8	2,329.5	163.1	56.3	190.5	7,411.7	7,221.2			2006 Avg:	658.7	33.7
2005 Total:		31.9	63.7	1,257.4	2,832.1	2,086.6	146.1	50.5	170.6	6,638.8	6,468.2			2005 Avg:	605.9	31.4
2004 Total:		32.3	8.2	846.4	2,272.3	2,170.6	99.3	51.7	161.0	5,641.8	5,480.8			2004 Avg:	557.3	28.6
2003 Total:		30.1	7.7	787.4	2,114.1	2,019.5	92.4	48.1	149.8	5,249.1	5,099.2			2003 Avg:	540.7	28.1
2002 Total:		28.5	7.2	745.7	2,002.0	1,912.4	87.5	45.6	141.9	4,970.9	4,829.0			2002 Avg:	532.2	28.0
2001 Total:		28.1	7.1	735.2	1,973.7	1,885.4	86.3	44.9	139.9	4,900.6	4,760.7			2001 Avg:	557.8	30.1
2000 Total:		33.8	5.0	891.2	2,569.3	1,867.1	87.6	52.9	119.5	5,626.4	5,507.0			2000 Avg: ³	NA	NA
1999 Total:		66.5	NA	1,688.5	5,081.8	2,208.9	86.5	54.1	111.9	9,298.1	9,186.2			1999 Avg:	673.4	28.9
1998 Total:		68.2	NA	1,626.6	4,507.7	2,452.0	98.8	93.7	129.0	8,976.0	8,847.0			1998 Avg:	694.7	29.6
1997 Total:		66.2	NA	1,420.4	4,206.5	1,982.7	86.3	100.3	89.5	7,951.9	7,862.3			1997 Avg:	656.5	28.0
1996 Total:		67.4	NA	1,332.8	2,863.2	2,531.1	77.7	100.3	61.8	7,034.3	6,972.5			1996 Avg:	629.8	25.9
1995 Total:		47.2	NA	1,294.1	2,169.0	2,530.9	12.6	107.6	NA	6,161.3	6,161.3			1995 Avg:	633.5	24.8
1994 Total:		48.4	NA	1,060.6	2,746.4	1,209.6	NA	98.8	NA	5,163.8	5,163.8			1994 Avg:	701.5	25.3
1993 Total:		40.1	NA	724.1	2,483.9	66.4	NA	84.4	NA	3,398.9	3,398.9			1993 Avg:	740.1	23.1
1992 Total:		NA	NA	733.4	1,436.2	503.9	NA	68.7	NA	2,742.1	2,742.1			1992 Avg:	845.9	27.9
1991 Total:		NA	NA	409.9	661.2	659.3	NA	23.6	NA	1,754.0	1,754.0			1991 Avg:	777.1	25.5
1990 Total:		NA	NA	228.7	500.8	358.4	NA	6.3	NA	1,094.2	1,094.2			1990 Avg:	712.1	22.8
1989 Total:		NA	NA	69.9	42.7	192.8	NA	NA	NA	305.4	305.4			1989 Avg:	NA	NA

NORTH END PERCENTAGE BREAKDOWN BY MATERIAL									
YEAR	ALUM	FERROUS METAL	GLASS	MIXED PAPER	NEWS-PAPER	PLASTIC (PET/HDPE)	TIN	CONTAM-INANTS	TOTAL w/cont
2006 Avg:	0.5%	1.0%	18.9%	42.7%	31.4%	2.2%	0.8%	2.6%	100%
2005 Avg:	0.5%	1.0%	18.9%	42.7%	31.4%	2.2%	0.8%	2.6%	100%
2004 Avg:	0.6%	0.1%	15.0%	40.3%	38.5%	1.8%	0.9%	2.9%	100%
2003 Avg:	0.6%	0.1%	15.0%	40.3%	38.5%	1.8%	0.9%	2.9%	100%
2002 Avg:	0.6%	0.1%	15.0%	40.3%	38.5%	1.8%	0.9%	2.9%	100%
2001 Avg:	0.6%	0.1%	15.0%	40.3%	38.5%	1.8%	0.9%	2.9%	100%
2000 Avg:	0.7%	0.1%	15.8%	45.7%	33.2%	1.6%	0.9%	2.1%	100%
1999 Avg:	1.4%	NA	18.2%	54.7%	23.8%	0.9%	0.6%	1.2%	100%
1998 Avg:	1.4%	NA	18.1%	50.2%	27.3%	1.1%	1.0%	1.4%	100%
1997 Avg:	1.4%	NA	17.9%	52.9%	24.9%	1.1%	1.3%	1.1%	100%
1996 Avg:	1.4%	NA	18.9%	40.7%	36.0%	1.1%	1.4%	0.9%	100%
1995 Avg:	1.0%	NA	21.0%	35.2%	41.1%	0.2%	1.7%	NA	100%
1994 Avg:	1.0%	NA	20.5%	53.2%	23.4%	NA	1.9%	NA	100%
1993 Avg:	0.8%	NA	21.3%	73.1%	2.0%	NA	2.5%	NA	100%
1992 Avg:	NA	NA	26.7%	52.4%	18.4%	NA	2.5%	NA	100%
1991 Avg:	NA	NA	23.4%	37.7%	37.6%	NA	1.3%	NA	100%
1990 Avg:	NA	NA	20.9%	45.8%	32.8%	NA	0.6%	NA	100%
1989 Avg:	NA	NA	22.9%	14.0%	63.1%	NA	NA	NA	100%

APARTMENT RECYCLING PROGRAM

SOUTH END TONNAGE DATA												Sign-Up Data ¹				
Yr	Mo	ALUM	FERROUS METAL	GLASS	MIXED PAPER	NEWS-PAPER	PLASTIC (PET/HDPE)	TIN	CONTAM-INANTS	TOTAL w/cont	TOTAL w/o cont	Bldgs	Units	Units/ Bldg	Lbs/ Bldg	Lbs/ Unit
2005	1	3.8	2.4	168.5	420.2	253.3	19.1	6.5	23.3	897.0	873.7	2,534	65,665	25.9	689.6	26.6
2005	2	3.4	2.2	151.4	377.7	227.7	17.2	5.8	21.0	806.4	785.5	2,554	65,957	25.8	615.1	23.8
2005	3	4.1	2.6	181.7	453.1	273.2	20.6	7.0	25.2	967.4	942.3	2,577	66,678	25.9	731.3	28.3
2005	4	3.7	2.4	164.6	410.5	247.5	18.7	6.3	22.8	876.5	853.7	2,584	66,893	25.9	660.7	25.5
2005	5	4.0	2.6	181.0	451.4	272.2	20.5	6.9	25.1	963.8	938.7	2,605	67,286	25.8	720.7	27.9
2005	6	4.1	2.6	181.9	453.7	273.6	20.6	7.0	25.2	968.7	943.5	2,638	67,967	25.8	715.3	27.8
2005	7	4.1	2.7	184.5	460.2	277.5	20.9	7.1	25.5	982.6	957.0	2,654	68,477	25.8	721.2	28.0
2005	8	4.3	2.7	190.7	475.5	286.7	21.6	7.3	26.4	1015.3	988.9	2,662	68,807	25.8	742.9	28.7
2005	9	3.9	2.5	176.2	439.4	264.9	20.0	6.8	24.4	938.0	913.7	2,670	68,967	25.8	684.4	26.5
2005	10	3.9	2.5	173.4	432.5	260.7	19.7	6.6	24.0	923.3	899.3	2,678	69,439	25.9	671.6	25.9
2005	11	4.2	2.7	188.8	470.9	283.9	21.4	7.2	26.1	1005.4	979.2	2,696	69,670	25.8	726.4	28.1
2005	12	4.5	2.9	200.3	499.6	301.2	22.7	7.7	27.7	1066.6	1038.8	2,713	70,047	25.8	765.8	29.7
2006	1	4.7	3.0	210.0	523.9	315.8	23.8	8.1	29.1	1118.4	1089.4	2,730	70,435	25.8	798.1	30.9
2006	2	4.0	2.6	178.7	445.7	268.7	20.3	6.9	24.7	951.6	926.9	2,738	70,646	25.8	677.1	26.2
2006	3	4.3	2.8	191.4	477.3	287.8	21.7	7.3	26.5	1019.1	992.6	2,745	70,865	25.8	723.2	28.0
2006	4	3.8	2.4	168.1	419.4	252.8	19.1	6.4	23.3	895.4	872.1	2,742	70,743	25.8	636.1	24.7
2006	5	4.3	2.8	194.4	485.0	292.4	22.1	7.5	26.9	1035.4	1008.5	2,742	70,902	25.9	735.6	28.4
2006	6	3.9	2.5	173.7	433.3	261.2	19.7	6.7	24.0	925.0	900.9	2,742	70,954	25.9	657.1	25.4
2006	7	4.2	2.7	186.1	464.2	279.9	21.1	7.1	25.8	991.0	965.3	2,749	71,038	25.8	702.3	27.2
2006	8	4.5	2.9	199.5	497.7	300.1	22.6	7.7	27.6	1062.5	1034.9	2,748	71,277	25.9	753.2	29.0
2006	9	4.1	2.7	185.1	461.7	278.4	21.0	7.1	25.6	985.7	960.1	2,754	71,559	26.0	697.2	26.8
2006	10	4.2	2.7	186.2	464.5	280.1	21.1	7.1	25.8	991.7	966.0	2,759	71,980	26.1	700.2	26.8
2006	11	4.5	2.9	203.0	506.2	305.2	23.0	7.8	28.1	1080.7	1052.6	2,758	72,150	26.2	763.3	29.2
2006	12	5.0	3.2	225.4	562.1	338.9	25.6	8.6	31.2	1200.1	1168.9	2,760	72,194	26.2	847.0	32.4
2006 Total:		51.5	33.1	2,301.81	5,741.1	3,461.3	261.1	88.2	318.7	12,256.7	11,938.1			2006 Avg:	724.2	27.9
2005 Total:		47.9	30.8	2,143.0	5,344.9	3,222.4	243.1	82.2	296.7	11,410.9	11,114.2			2005 Avg:	703.8	27.2
2004 Total:		50.0	22.5	1,844.5	4,365.7	3,385.8	160.3	76.6	303.2	10,208.4	9,905.3			2004 Avg:	694.3	26.7
2003 Total:		46.7	21.0	1,722.2	4,076.3	3,161.4	149.6	71.5	283.1	9,531.7	9,248.7			2003 Avg:	675.9	25.9
2002 Total:		43.0	19.3	1,585.4	3,752.5	2,910.3	137.7	65.8	260.6	8,774.7	8,514.1			2002 Avg:	654.7	25.0
2001 Total:		42.0	18.8	1,547.4	3,662.6	2,840.5	134.4	64.2	254.3	8,564.4	8,310.1			2001 Avg:	673.3	27.0
2000 Total:		31.2	12.8	1,159.4	2,699.9	2,137.8	92.3	50.6	172.7	6,356.7	6,184.0			2000 Avg: ³	662.3	27.4
1999 Total:		2.1	NA	220.1	566.1	554.7	0.8	12.4	NA	1,356.2	1,356.2			1999 Avg:	515.4	20.0
1998 Total:		2.0	NA	208.7	512.6	526.4	0.8	12.4	NA	1,262.8	1,262.8			1998 Avg:	492.3	19.2
1997 Total:		2.7	NA	226.0	479.8	539.2	1.0	14.2	NA	1,263.0	1,263.0			1997 Avg:	517.3	20.1
1996 Total:		2.5	NA	194.5	433.5	510.1	0.9	13.0	NA	1,154.4	1,154.4			1996 Avg:	506.9	19.1
1995 Total:		2.4	NA	164.2	386.7	464.5	0.9	12.4	NA	1,031.1	1,031.1			1995 Avg:	490.7	17.7
1994 Total:		2.9	NA	164.0	266.8	468.6	0.8	12.1	NA	915.2	915.2			1994 Avg:	477.0	16.9
1993 Total:		6.9	NA	45.4	33.4	369.2	0.3	1.6	NA	456.9	456.9			1993 Avg:	318.9	10.2
1992 Total:		3.3	NA	2.8	2.3	222.8	NA	NA	NA	231.3	231.3			1992 Avg:	330.5	9.8
1991 Total:		0.9	NA	0.7	0.5	73.4	NA	NA	NA	75.6	75.6			1991 Avg:	345.1	7.6

SOUTH END PERCENTAGE BREAKDOWN BY MATERIAL									
YEAR	ALUM	FERROUS METAL	GLASS	MIXED PAPER	NEWS-PAPER	PLASTIC (PET/HDPE)	TIN	CONTAM-INANTS	TOTAL w/cont
2006 Avg:	0.4%	0.3%	18.8%	46.8%	28.2%	2.1%	0.7%	2.6%	100%
2005 Avg:	0.4%	0.3%	18.8%	46.8%	28.2%	2.1%	0.7%	2.6%	100%
2004 Avg:	0.5%	0.2%	18.1%	42.8%	33.2%	1.6%	0.7%	3.0%	100%
2003 Avg:	0.5%	0.2%	18.1%	42.8%	33.2%	1.6%	0.7%	3.0%	100%
2002 Avg:	0.5%	0.2%	18.1%	42.8%	33.2%	1.6%	0.7%	3.0%	100%
2001 Avg:	0.5%	0.2%	18.1%	42.8%	33.2%	1.6%	0.7%	3.0%	100%
2000 Avg:	0.5%	0.2%	18.2%	42.5%	33.6%	1.5%	0.8%	2.7%	100%
1999 Avg:	0.2%	NA	16.2%	41.7%	40.9%	0.1%	0.9%	NA	100%
1998 Avg:	0.2%	NA	16.5%	40.6%	41.7%	0.1%	1.0%	NA	100%
1997 Avg:	0.2%	NA	17.9%	38.0%	42.7%	0.1%	1.1%	NA	100%
1996 Avg:	0.2%	NA	16.8%	37.5%	44.2%	0.1%	1.1%	NA	100%
1995 Avg:	0.2%	NA	15.9%	37.5%	45.1%	0.1%	1.2%	NA	100%
1994 Avg:	0.3%	NA	17.9%	29.2%	51.2%	0.1%	1.3%	NA	100%
1993 Avg:	1.5%	NA	9.9%	7.3%	80.8%	0.1%	0.3%	NA	100%
1992 Avg:	1.4%	NA	1.2%	1.0%	96.3%	NA	NA	NA	100%
1991 Avg:	1.2%	NA	0.9%	0.7%	97.2%	NA	NA	NA	100%

APARTMENT RECYCLING PROGRAM

TOTAL CITY TONNAGE DATA												Sign-Up Data ¹					
Yr	Mo	ALUM	FERROUS		GLASS	MIXED PAPER	NEWS-PAPER	PLASTIC (PET/HDPE)	TIN	CONTAM-INANTS	TOTAL w/cont	TOTAL w/o cont	Bldgs	Units	Units/	Lbs/	Lbs/
			METAL												Bldg	Bldg	Unit
2005	1	6.3	7.4	267.3	642.8	417.3	30.6	10.4	36.7	1,418.8	1,382.1	4,263	99,141	23.3	648.4	27.9	
2005	2	5.7	6.8	242.4	582.6	378.6	27.7	9.5	33.3	1,286.6	1,253.2	4,290	99,560	23.2	584.3	25.2	
2005	3	6.7	7.9	286.5	689.3	447.2	32.8	11.2	39.4	1,520.9	1,481.5	4,336	100,775	23.2	683.4	29.4	
2005	4	6.1	7.3	261.9	629.7	409.0	30.0	10.2	36.0	1,390.3	1,354.3	4,347	100,999	23.2	623.1	26.8	
2005	5	6.7	7.9	286.3	688.6	446.9	32.8	11.2	39.3	1,519.8	1,480.5	4,375	101,386	23.2	676.8	29.2	
2005	6	6.8	8.0	288.7	694.2	450.7	33.0	11.3	39.7	1,532.3	1,492.6	4,427	102,372	23.1	674.3	29.2	
2005	7	6.7	7.7	284.7	685.8	443.6	32.6	11.1	39.1	1,511.2	1,472.1	4,446	103,002	23.2	662.2	28.6	
2005	8	7.1	8.5	303.5	729.7	473.9	34.7	11.8	41.7	1,611.0	1,569.2	4,462	103,418	23.2	703.4	30.3	
2005	9	6.6	7.9	282.2	678.3	440.9	32.3	11.0	38.8	1,498.0	1,459.2	4,462	103,452	23.2	654.1	28.2	
2005	10	6.2	7.2	267.0	643.3	416.0	30.5	10.4	36.7	1,417.4	1,380.7	4,473	103,981	23.2	617.4	26.6	
2005	11	7.4	9.0	313.7	752.3	491.2	35.9	12.3	43.1	1,664.9	1,621.8	4,498	104,531	23.2	721.1	31.0	
2005	12	7.4	8.8	316.2	760.7	493.6	36.2	12.3	43.5	1,678.6	1,635.1	4,523	105,052	23.2	723.0	31.1	
2006	1	7.9	9.4	336.7	809.2	526.0	38.5	13.1	46.3	1,787.2	1,740.9	4,549	105,652	23.2	765.4	33.0	
2006	2	6.7	7.9	284.2	683.4	443.9	32.5	11.1	39.1	1,508.8	1,469.8	4,561	106,034	23.2	644.5	27.7	
2006	3	7.2	8.6	307.5	738.9	480.5	35.2	12.0	42.3	1,632.1	1,589.8	4,565	106,228	23.3	696.5	29.9	
2006	4	6.3	7.5	268.1	644.5	418.7	30.7	10.5	36.8	1,423.1	1,386.2	4,567	106,150	23.2	607.1	26.1	
2006	5	7.3	8.7	310.1	745.5	484.4	35.5	12.1	42.6	1,646.2	1,603.5	4,570	106,478	23.3	701.8	30.1	
2006	6	6.9	8.5	291.5	698.6	456.7	33.4	11.4	40.0	1,547.1	1,507.0	4,571	106,717	23.3	659.4	28.2	
2006	7	6.9	8.2	295.6	710.8	461.6	33.8	11.5	40.6	1,569.1	1,528.5	4,579	106,904	23.3	667.6	28.6	
2006	8	7.6	9.1	322.9	775.6	504.8	37.0	12.6	44.4	1,714.1	1,669.7	4,579	107,221	23.4	729.3	31.1	
2006	9	7.0	8.3	297.3	714.3	464.5	34.0	11.6	40.8	1,577.9	1,537.0	4,588	107,499	23.4	670.0	28.6	
2006	10	7.1	8.5	300.8	722.5	470.1	34.4	11.7	41.3	1,596.4	1,555.1	4,589	107,877	23.5	677.7	28.8	
2006	11	7.7	9.2	326.0	783.3	509.4	37.3	12.7	44.8	1,730.3	1,685.5	4,587	108,035	23.6	734.9	31.2	
2006	12	8.6	10.3	364.8	876.2	570.3	41.8	14.2	50.1	1,936.2	1,886.1	4,587	108,050	23.6	822.4	34.9	
2006 Total:		87.1	104.2	3,705.6	8,902.9	5,790.8	424.1	144.6	509.2	19,668.4	19,159.2			2006 Avg:	605.8	28.8	
2005 Total:		79.8	94.5	3,400.4	8,177.0	5,309.0	389.1	132.6	467.3	18,049.7	17,582.4			2005 Avg:	582.3	27.6	
2004 Total:		82.3	30.7	2,690.8	6,638.0	5,556.4	259.6	128.3	464.2	15,850.3	15,386.0			2004 Avg:	554.1	26.3	
2003 Total:		76.8	28.6	2,509.7	6,190.4	5,180.8	242.0	119.6	432.9	14,780.8	14,347.9			2003 Avg:	532.6	25.6	
2002 Total:		71.5	26.6	2,331.1	5,754.6	4,822.7	225.3	111.4	402.5	13,745.6	13,343.1			2002 Avg:	509.3	24.5	
2001 Total:		70.0	26.0	2,282.6	5,636.3	4,725.9	220.7	109.2	394.2	13,465.0	13,070.8			2001 Avg:	550.7	25.9	
2000 Total:		65.0	17.8	2,050.6	5,269.2	4,004.9	179.9	103.5	292.2	11,983.2	11,691.0			2000 Avg: ³	497.0	25.0	
1999 Total:		68.6	NA	1,908.6	5,647.9	2,763.6	87.3	66.4	111.9	10,654.3	10,542.4			1999 Avg:	654.7	27.6	
1998 Total:		70.2	NA	1,835.2	5,020.4	2,978.4	99.6	106.1	129.0	10,238.8	10,109.8			1998 Avg:	669.2	28.1	
1997 Total:		68.9	NA	1,646.4	4,686.3	2,521.9	87.3	114.5	89.5	9,214.8	9,125.3			1997 Avg:	639.2	26.8	
1996 Total:		69.9	NA	1,527.3	3,296.6	3,041.2	78.7	113.3	61.8	8,188.7	8,126.9			1996 Avg:	613.5	24.8	
1995 Total:		49.6	NA	1,458.3	2,555.7	2,995.5	13.5	120.0	NA	7,192.4	7,192.4			1995 Avg:	608.2	22.9	
1994 Total:		51.3	NA	1,224.6	3,013.2	1,678.1	0.8	111.0	NA	6,079.0	6,079.0			1994 Avg:	657.8	23.6	
1993 Total:		47.0	NA	769.5	2,517.4	435.6	0.3	85.9	NA	3,855.7	3,855.7			1993 Avg:	646.0	20.2	
1992 Total:		3.3	NA	736.2	1,438.5	726.7	NA	68.7	NA	2,973.4	2,973.4			1992 Avg:	753.3	24.4	
1991 Total:		0.9	NA	410.6	661.7	732.7	NA	23.6	NA	1,829.5	1,829.5			1991 Avg:	733.5	23.4	
1990 Total:		NA	NA	228.7	500.8	358.4	NA	6.3	NA	1,094.2	1,094.2			1990 Avg:	712.1	22.8	
1989 Total:		NA	NA	69.9	42.7	192.8	NA	NA	NA	305.4	305.4			1989 Avg:	NA	NA	

TOTAL CITY PERCENTAGE BREAKDOWN BY MATERIAL										
YEAR	ALUM	FERROUS		GLASS	MIXED PAPER	NEWS-PAPER	PLASTIC (PET/HDPE)	TIN	CONTAM-INANTS	TOTAL w/cont
		METAL								
2006 Avg:	0.4%	0.5%	18.8%	45.3%	29.4%	2.2%	0.7%	2.6%	100%	
2005 Avg:	0.4%	0.5%	18.8%	45.3%	29.4%	2.2%	0.7%	2.6%	100%	
2004 Avg:	0.5%	0.2%	17.0%	41.9%	35.1%	1.6%	0.8%	2.9%	100%	
2003 Avg:	0.5%	0.2%	17.0%	41.9%	35.1%	1.6%	0.8%	2.9%	100%	
2002 Avg:	0.5%	0.2%	17.0%	41.9%	35.1%	1.6%	0.8%	2.9%	100%	
2001 Avg:	0.5%	0.2%	17.0%	41.9%	35.1%	1.6%	0.8%	2.9%	100%	
2000 Avg:	0.5%	0.1%	17.1%	44.0%	33.4%	1.5%	0.9%	2.4%	100%	
1999 Avg:	0.6%	NA	17.9%	53.0%	25.9%	0.8%	0.6%	1.1%	100%	
1998 Avg:	0.7%	NA	17.9%	49.0%	29.1%	1.0%	1.0%	1.3%	100%	
1997 Avg:	0.7%	NA	17.9%	50.9%	27.4%	0.9%	1.2%	1.0%	100%	
1996 Avg:	0.9%	NA	18.7%	40.3%	37.1%	1.0%	1.4%	0.8%	100%	
1995 Avg:	0.7%	NA	20.3%	35.5%	41.6%	0.2%	1.7%	NA	100%	
1994 Avg:	0.8%	NA	20.1%	49.6%	27.6%	0.0%	1.8%	NA	100%	
1993 Avg:	1.2%	NA	20.0%	65.3%	11.3%	0.0%	2.2%	NA	100%	
1992 Avg:	NA	NA	24.8%	48.4%	24.4%	NA	2.3%	NA	100%	
1991 Avg:	NA	NA	22.4%	36.2%	40.0%	NA	1.3%	NA	100%	
1990 Avg:	NA	NA	20.9%	45.8%	32.8%	NA	0.6%	NA	100%	
1989 Avg:	NA	NA	22.9%	14.0%	63.1%	NA	0.0%	NA	100%	

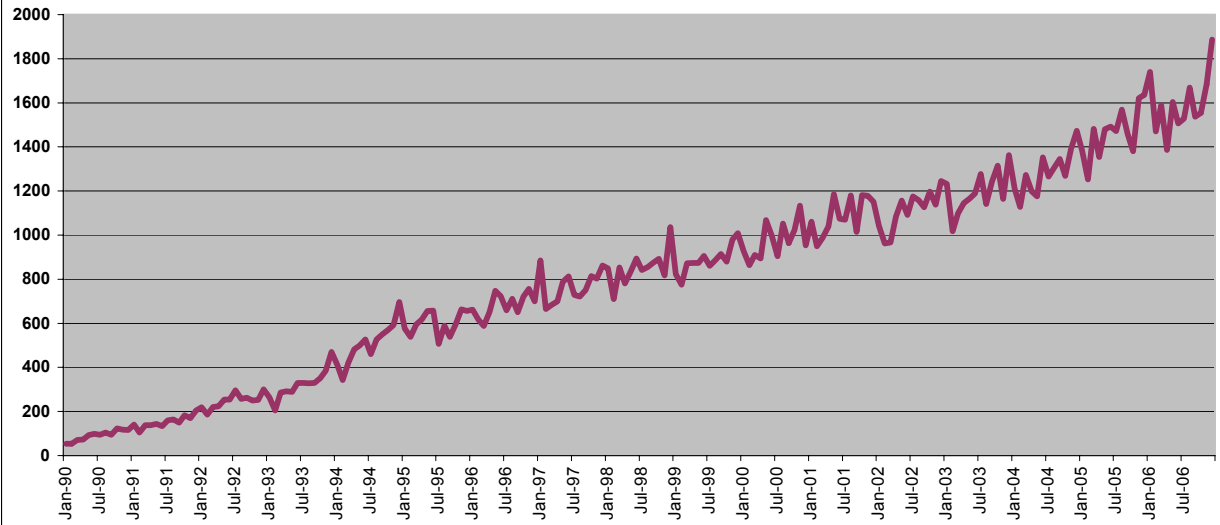
¹ Includes apts. with dumpster recycle only. Tons collected for apts. with curb recycle are reflected on the curbside recycle report

² New materials (polycoated paper, aseptic packaging and additional plastics) added to program effective April 2000

³ Subscription data inaccurate due to transfer of accounts during change in contractors Jan 2000

APARTMENT RECYCLING

Monthly Tons Collected
(not including contamination¹)



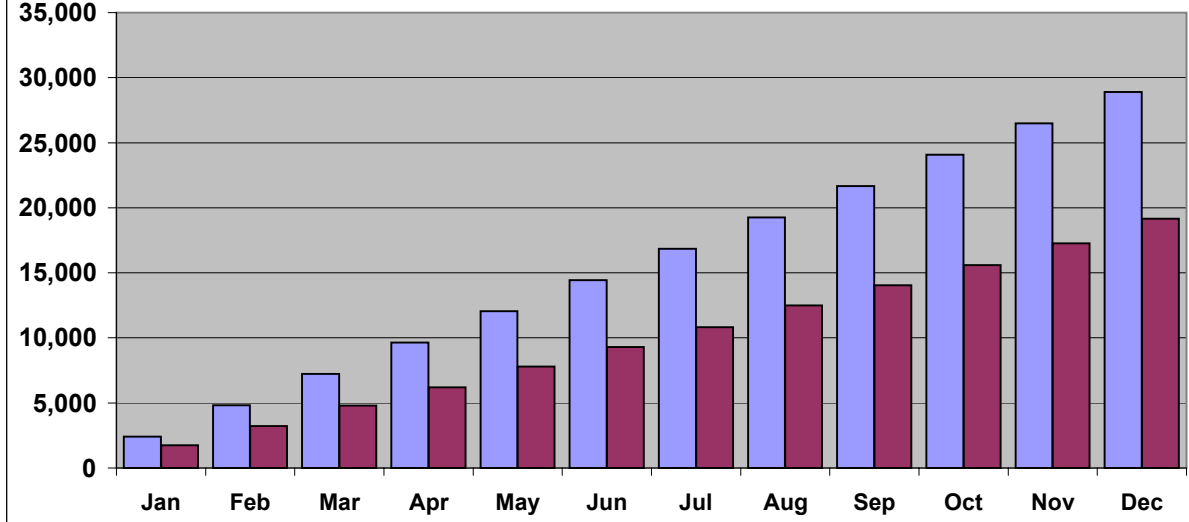
(1) Contamination rate established through composition study performed 2000-2001 applied to tons collected since April 2000. Prior to that, contamination data is incomplete.

APARTMENT RECYCLING

Cumulative Tons Collected 2006

(not including contamination)

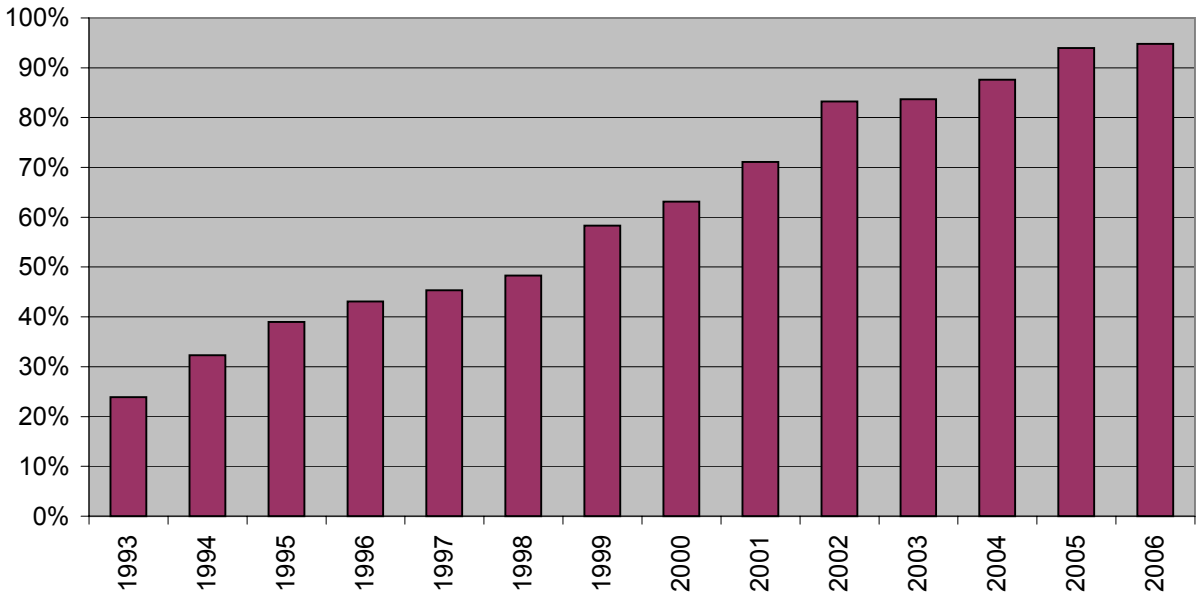
2010 Goal 2006 Actual



APARTMENT RECYCLING

Accounts Signed-up¹

■ % Signed Up



¹ As of 2002 chart shows % of units signed up. Before 2002, chart shows % of buildings signed up