

# GARBAGE REPORT

December 2005

Seattle Public Utilities, Resource Planning Division, Forecasting & Evaluation Section

Report Date: February 3, 2005

Phone: (206) 684-4143

## Total City Tonnage Breakdown

Self Haul Cars <sup>1</sup> in December:	515 Tons	1.0% increase vs. same period in 2004
2005 Cumulative Self Haul Cars:	7,487 Tons	3.0% decrease vs. same period in 2004
Self Haul Trucks <sup>2</sup> in December:	6,606 Tons	1.7% increase vs. same period in 2004
2005 Cumulative Self Haul Trucks:	93,011 Tons	1.1% increase vs. same period in 2004
2005 Cumulative Self Haul Cars & Trucks:	100,499 Tons	0.7% increase vs. same period in 2004
Residential Collection in December:	11,079 Tons	9.1% decrease vs. same period in 2004
2005 Cumulative Residential Collection:	134,557 Tons	5.6% decrease vs. same period in 2004
Commercial Tons in December:	16,927 Tons	7.4% decrease vs. same period in 2004
2005 Cumulative Commercial Tons:	205,637 Tons	4.8% decrease vs. same period in 2004
Total Tons Disposed in December:	35,128 Tons	6.3% decrease vs. same period in 2004
2005 Cumulative Total Tons Disposed:	440,663 Tons	3.9% decrease vs. same period in 2004

## Selected Statistics for Residential Collection Service

Cumulative Residential Collection Tons through December 2005:

Collected by Waste Management:	51,647 Tons	8.2% decrease vs. same period in 2004
Collected by Rabanco:	82,910 Tons	3.9% decrease vs. same period in 2004

## Recycling & Disposal Station Self Haul Garbage Rates<sup>3</sup>:

Cars: \$14.00 per trip      Trucks: \$99.15 per ton (\$14.00 minimum)

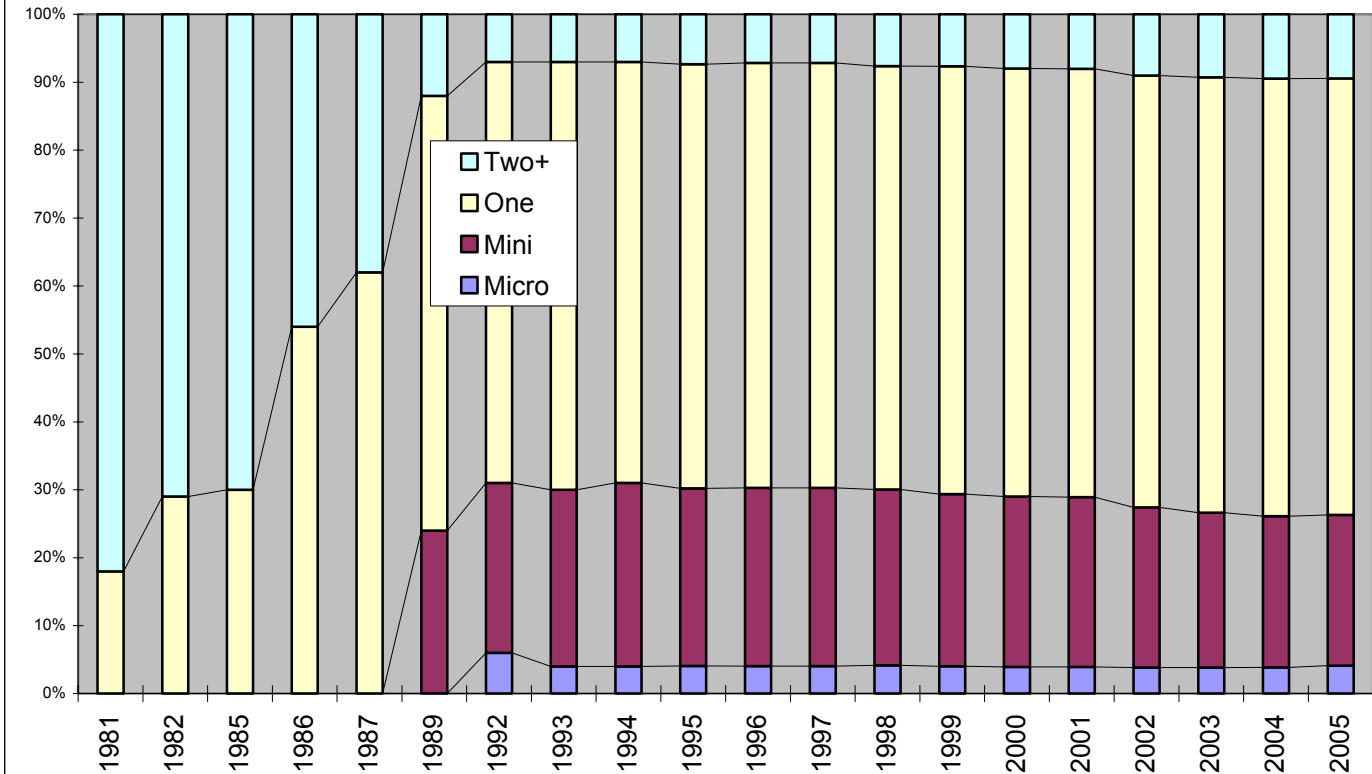
<sup>1</sup> Car tons calculated based on 378.8 pounds per car for 2001 & 2002 according to study done from Jan-Dec 2000

<sup>2</sup> An estimated 53% of the self-haul truck tons are commercial according to a waste stream sampling study conducted in 2000.

<sup>3</sup> Vans & pickup trucks pay the per ton truck rate.

## Variable Can Customer Service Levels

SERVICE LEVEL CHOICES OF SEATTLE'S VARIABLE CAN CUSTOMERS



	Micro	Mini	One	Two+
<b>1981</b>			18.00%	82.00%
<b>1982</b>			29.00%	71.00%
<b>1985</b>			30.00%	70.00%
<b>1986</b>			54.00%	46.00%
<b>1987</b>			62.00%	38.00%
<b>1989</b>		24.00%	64.00%	12.00%
<b>1992</b>	6.00%	25.00%	62.00%	7.00%
<b>1993</b>	4.00%	26.00%	63.00%	7.00%
<b>1994</b>	4.00%	27.00%	62.00%	7.00%
<b>1995</b>	4.06%	26.15%	62.44%	7.35%
<b>1996</b>	4.04%	26.23%	62.59%	7.14%
<b>1997</b>	4.04%	26.23%	62.59%	7.14%
<b>1998</b>	4.16%	25.88%	62.35%	7.61%
<b>1999</b>	4.06%	25.60%	63.62%	7.72%
<b>2000</b>	3.93%	25.08%	63.02%	7.97%
<b>2001</b>	3.95%	24.18%	63.16%	8.71%
<b>2002</b>	3.84%	23.57%	63.58%	9.02%
<b>2003</b>	3.83%	22.81%	64.10%	9.26%
<b>2004</b>	3.85%	22.27%	64.42%	9.46%
<b>2005</b>	4.12%	22.18%	64.27%	9.43%

### Monthly Variable Can Rates:

Micro (12 gal)	\$10.05
Mini (19 gal)	\$12.35
One Can (32 gal)	\$16.10
Two Cans (64 gal)	\$32.20
Each Add'l Can	\$16.10

### Residential Dumpster Service<sup>4</sup>

Most Common Monthly Rate  
\$82.50 (+ \$.60 per unit)

<sup>4</sup> This is the rate for a one cubic yard container picked up once per week, which is the most common dumpster service level. Residential dumpster service rates vary based on the number and size of containers, the number of pickups per week, and the number of dwelling units.

**CITY OF SEATTLE GARBAGE TONNAGE REPORT 2004-2005**

		SELF HAUL GARBAGE			RESIDENTIAL GARBAGE					COMMERCIAL GARBAGE						GRAND TOTAL				
		Total			City <sup>1</sup> Stations		Private Stations			Total	Waste Management			Rabanco			TOTAL	GRAND TOTAL		
Year	Month	Cars <sup>2</sup>	Trucks	Self Haul	NRDS & SRDS	Res Co-Collect at RDS <sup>16</sup>	Res Co-Collect at Lander <sup>16</sup>	WM	Rabanco	Residential Garbage	NRDS & SRDS <sup>14</sup>	Eastmont <sup>10</sup> 3rd & Lander <sup>15</sup>	Total WM	NRDS & SRDS <sup>14</sup>	Com'l Co-Collect at RDS <sup>16</sup>	Com'l Co-Collect at Lander <sup>16</sup>	3rd & Lander	Total Rabanco	Com'l Garbage	GARBAGE DISPOSED
2004	1	581	6,613	7,195	12,050			45	65	12,160	0	5,589	5,589	2,804			8,949	11,754	17,343	36,698
2004	2	529	6,873	7,403	10,538			0	0	10,538	0	5,463	5,463	2,603			8,393	10,995	16,459	34,399
2004	3	591	7,681	8,273	12,128			3	0	12,131	0	6,185	6,185	2,794			10,071	12,865	19,050	39,453
2004	4	596	7,730	8,326	10,882			250	523	11,654	3	5,845	5,848	2,969			8,886	11,855	17,703	37,683
2004	5	701	7,910	8,611	6,470			361	4405	11,236	0	6,036	6,036	2,724			9,460	12,184	18,221	38,067
2004	6	700	8,595	9,295	10,192			886	1394	12,472	2,516	3,137	5,654	479			12,025	12,505	18,159	39,925
2004	7	769	8,659	9,427	11,650			214	249	12,114	2,942	2,534	5,476	3,073			9,299	12,372	17,848	39,390
2004	8	808	8,881	9,689	11,985			216	57	12,258	3,274	2,579	5,852	2,664			10,035	12,699	18,552	40,498
2004	9	729	8,005	8,734	11,535			390	448	12,373	3,130	3,136	6,266	1,845			10,695	12,540	18,806	39,913
2004	10	628	7,552	8,181	10,724			0	616	11,340	2,626	2,878	5,504	2,952			9,282	12,235	17,739	37,259
2004	11	580	7,045	7,626	11,420			425	217	12,061	2,851	2,738	5,589	2,875			9,497	12,371	17,961	37,647
2004	12	510	6,498	7,009	11,438			329	424	12,191	3,205	2,577	5,783	4,709			7,781	12,490	18,273	37,472
2005	1	582	7,036	7,618	11,070			9	29	11,108	3,046	2,421	5,468	4,863			6,535	11,398	16,866	35,592
2005	2	531	6,543	7,074	9,751			0	0	9,751	2,870	2,164	5,034	4,668			5,805	10,472	15,507	32,331
2005	3	592	7,341	7,933	11,495			0	0	11,495	3,123	2,680	5,803	5,269			6,826	12,095	17,898	37,326
2005	4	592	7,512	8,105	10,575	535	81	0	3	11,194	2,961	2,595	5,556	4,382	306	143	6,233	11,065	16,621	35,920
2005	5	631	8,406	9,037	8,705	2,405	238	0	14	11,361	3,324	2,187	5,511	2,621	1,782	637	6,394	11,434	16,945	37,343
2005	6	686	8,523	9,209	8,343	2,785	372	0	401	11,900	3,571	2,430	6,001	3,225	1,787	1,014	6,149	12,175	18,176	39,286
2005	7	769	8,664	9,433	8,012	2,625	228	0	53	10,918	3,017	2,333	5,350	2,928	1,594	935	6,178	11,636	16,985	37,336
2005	8	749	8,886	9,635	8,322	2,771	498	0	177	11,769	3,145	2,654	5,799	3,147	1,666	1,073	6,679	12,565	18,365	39,768
2005	9	684	8,337	9,020	8,249	2,963	251	0	5	11,468	2,955	2,481	5,436	3,191	1,804	842	6,454	12,291	17,728	38,216
2005	10	632	8,316	8,948	7,492	2,657	636	0	163	10,947	2,785	2,346	5,131	3,000	1,943	465	6,041	11,449	16,580	36,475
2005	11	523	6,842	7,365	8,259	2,727	536	0	48	11,569	2,896	2,350	5,246	3,127	2,267	445	5,954	11,794	17,040	35,973
2005	12	515	6,606	7,121	7,876	2,545	627	0	32	11,079	2,868	2,312	5,179	3,348	2,176	536	5,687	11,748	16,927	35,128
Total 2005		7,487	93,011	100,499	108,147	22,011	3,467	9	923	134,557	36,561	28,955	65,516	43,770	15,325	6,091	74,935	140,122	205,637	440,693
Total 2004		7,723	92,043	99,766	131,011			3,118	8,398	142,527	20,547	48,698	69,246	32,492			114,374	146,867	216,112	458,405
Total 2003		7,386	93,845	101,232	138,090			1,845	3,596	143,532	999	69,717	70,716	28,843			113,688	142,531	213,247	458,010
Total 2002		7,353	95,537	102,891	141,951			554	406	142,910	8,237	65,413	73,650	31,135			112,409	143,544	217,195	462,996
Total 2001		6,818	95,487	102,305	144,011			9	539	144,559		82,472	82,472				145,933	145,933	228,405	475,270
Total 2000		6,323	95,560	101,883	144,595			368	869	145,832		91,722	91,722				136,695	136,695	228,417	476,132
Total 1999 <sup>13</sup>		6,989	97,378	104,367	147,718					147,718		85,952	85,952				139,396	139,396	225,348	477,433
Total 1998		16,883	81,136	98,019	143,704				2,230	145,934		80,217	80,217				133,429	133,429	213,646	457,598
Total 1997		15,750	81,396	97,146	147,956				16	147,972		79,053	79,053				129,617	129,617	208,670	453,787
Total 1996 <sup>12</sup>		13,777	70,091	83,868	143,327				962	144,289		71,448	71,448				123,521	123,521	194,969	423,127
Total 1995 <sup>8</sup>		13,279	71,208	84,487	145,654				572	146,226		75,581	75,581				121,121	121,121	196,702	427,415
Total 1994		13,064	74,291	87,354	148,023				2,043	150,066		75,144	75,144				119,623	119,623	194,767	432,187
Total 1993		8,665	76,853	85,518	144,127					144,127		73,915	73,915				126,676	126,676	200,591	430,236
Total 1992		8,178	80,742	88,920	142,154					142,154		68,742	68,742				125,596	125,596	194,338	425,412
Total 1991		7,947	68,576	76,523	140,722					140,722		74,389	74,389				147,868	147,868	222,257	439,502
Total 1990 <sup>3</sup>		7,253	73,939	81,192	140,528					140,528		78,461	78,461				157,664	157,664	236,125	457,845
Total 1989 <sup>4,5</sup>		6,919	58,720	65,639	143,221					143,221		75,513	75,513				121,029	121,029	196,542	405,402
Total 1988 <sup>6</sup>		11,810	75,557	87,367	179,966					179,966		72,680	72,680				125,494	125,494	198,174	465,507
Total 1987 <sup>7</sup>		13,622	88,147	101,769	188,800					188,800		55,212	55,212				170,703	170,703	225,915	516,484
Total 1986		25,278	105,442	130,720	190,584					190,584		50,947	50,947				151,189	151,189	202,136	523,440

1 There are two city owned recycling and disposal stations, one in the North end of the City (NRDS) and one in the South (SRDS).

2 Car weight estimate of 378.8 pounds per car based on study done from Jan - Dec 2000

Car weight estimate for 1999/2000 based on 333 pounds per car

Car weight estimate for 1998 based on 433 pounds per car.

Car weight estimate for 1994/95 based on 290 pounds per car.

3 Wood Waste Program at city owned transfer stations began in January, 1990

4 Apartment Recycling Program began in May, 1989

5 Curbside Yard Waste Collection began in January, 1989

6 Curbside Recycling Program began in February, 1988

7 Yard Waste "Clean Green" Program began in August, 1987

8 3,220 tons of residuals from the yard waste program were returned to SRDS

in 1995 but not weighed in. These have been added in as self haul truck tons.

2/8/2006

9 When tons are diverted to a private station it is usually due to equipment failure or maintenance.

10 Eastmont figures are "incoming" tons as reported by Waste Management.

11 Rabanco's tons are "incoming" beginning 1/1/1999 as reported by Rabanco.

12 158 commercial tons were taken to Klickitat from Rabanco in May 96 due to container shortages. These tons have been added back in the above table.

13 The large decrease in car tons from '98 to '99 is attributable to two factors. There was an increase in the per ton "car" rate from \$8.50 to \$13.00.

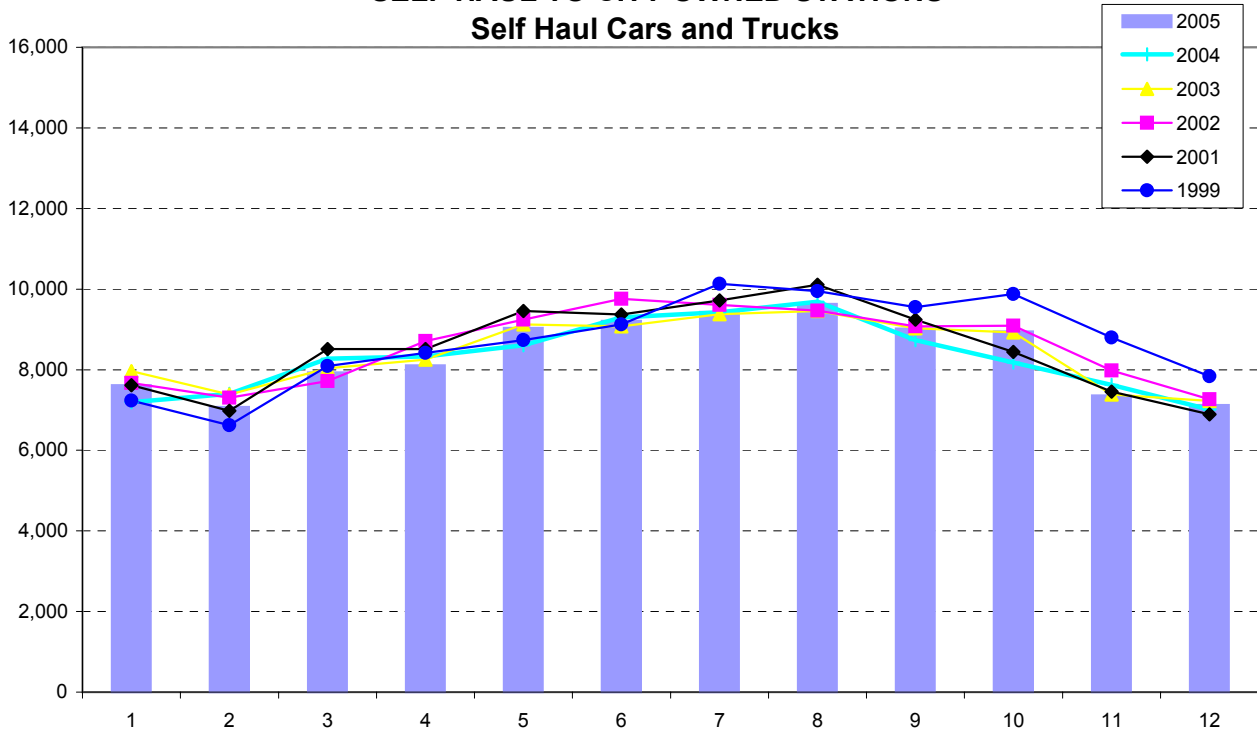
In addition, vans/pick-ups are no longer considered as "car" rate & must pay the per ton rate as "trucks".

14 Beginning Jan 18, 2002 a portion of commercial garbage coming to city transfer stations.

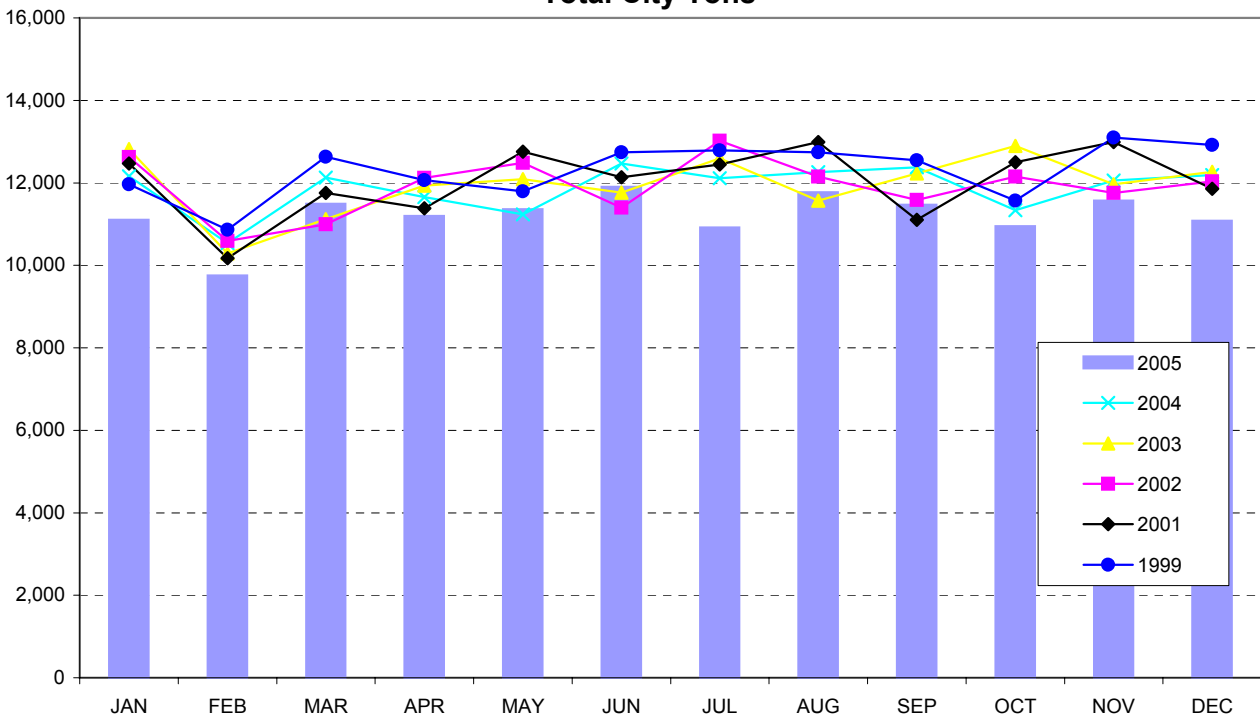
15 Beginning June 2004 Eastmont Station closed to commercial garbage. WM comm. Garb. now transferred at city stations or 3rd & Lander after hours.

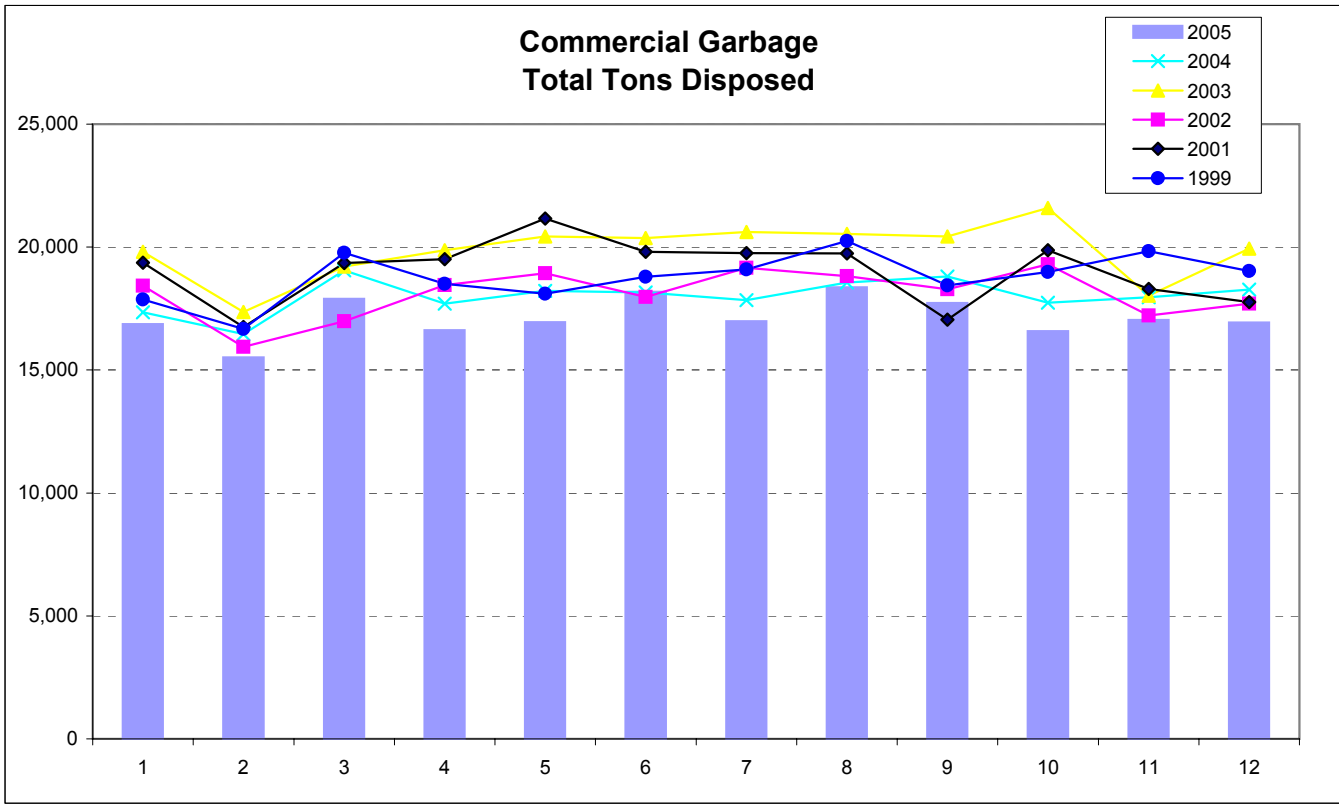
16 Beginning April 2005 Rabanco began Co-Collecting multi-family residential and commercial garbage in the same truck.

### SELF HAUL TO CITY OWNED STATIONS Self Haul Cars and Trucks

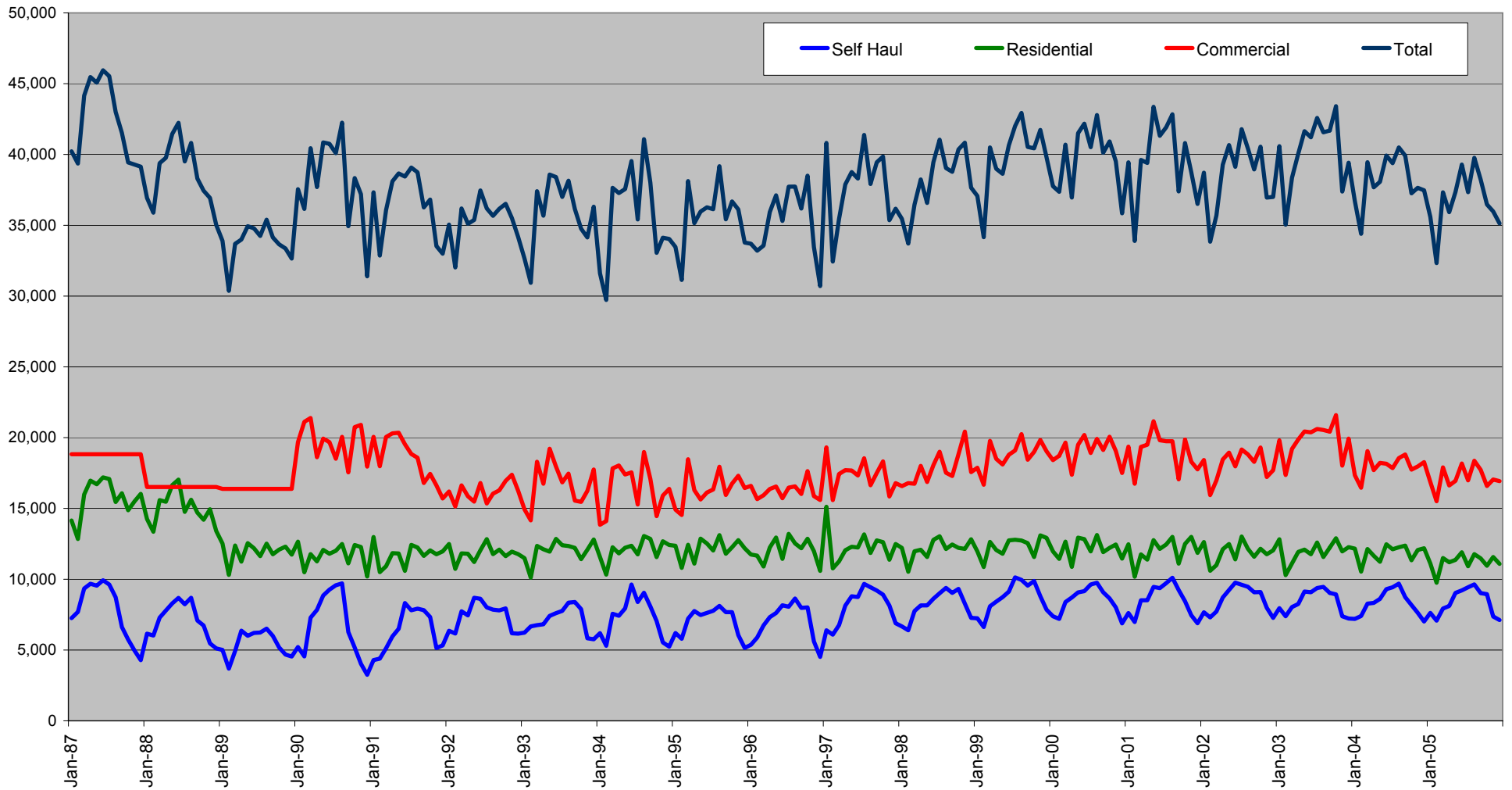


### RESIDENTIAL COLLECTION Total City Tons





# City of Seattle Garbage Disposal



Monthly commercial tonnage for 1987-1989 estimated from annual data.