

CURBSIDE RECYCLING REPORT

December 2004

Seattle Public Utilities, Resource Planning Division, Forecasting & Evaluation Section
Report Date: Feb 18, 2005

Phone: (206) 684-4143

TONNAGE BREAKDOWN

North End Tons (Without Contaminants)

North End in December 2004:	3,022 Tons	9.1% increase from 2003
Cumulative North End:	30,230 Tons	3.6% increase from 2003

South End Tons (Without Contaminants)

South End in December 2004:	3,019 Tons	5.8% increase from 2003
Cumulative South End:	31,530 Tons	3.4% increase from 2003

Citywide Tons (Without Contaminants)

Citywide in December 2004:	6,041 Tons	7.4% increase from 2003
Cumulative Citywide:	61,760 Tons	3.5% increase from 2003

Selected Statistics for January – December 2004

Average Pounds Per Eligible Household Per Month¹

North End:	71.9	(70,194 eligible households)
South End:	67.3	(78,297 eligible households)
Citywide:	69.5	(148,491 eligible households)

Service Citywide:

All materials are collected every other week on the same day as garbage collection service. Residents are provided 60 or 90 gallon carts for mixed recyclables and a 10 gallon bin for glass.

Materials Citywide²:

Newspaper, Mixed Paper³, Glass, Aluminum, Tin, PET & HDPE⁴ Bottles, Ferrous Metals, Plastic Bags (grocery bags), Plastic Containers (dairy/yogurt containers), milk cartons and juice boxes.

¹ Beginning Jan 2002, eligible household data based on new billing system (Banner).

² Effective April 1, 2000, the new contracts allow residents to combine all their recyclable materials - except glass – in one container. More kinds of materials can be recycled, including milk cartons, juice boxes, plastic bags, and plastic dairy and yogurt containers. Residents have one collection day per week for garbage, recycling and yard waste. Garbage is collected weekly. Recycling and yardwaste are collected on the same day on alternating weeks—recycling one week, yard waste the next week.

³ Overall, approximately 12% of the mixed paper is cardboard (OCC) based on 2000/2001 sampling data.

⁴ HDPE Bottles were added in April 1992. The overall breakdown between HDPE and PET is 51% and 49% respectively based on 2000/2001 sampling data.

Small Business Curbside Recycling - December 2004⁵

	Eligible Small Businesses	Small Businesses Signed Up	% Signed Up
North End	665	342	51%
South End	774	366	47%
Citywide	1439	708	49%

Small Business Curbside Recycling:

Businesses in Seattle using 90 gallon garbage cans or smaller are eligible to sign up for the free residential curbside recycling program. Small businesses signed up for curbside recycling have their recyclables collected by the same contractors providing residential recycling service in their area. This means Waste Management services small business recycling North of the Ship Canal and Allied Waste services small business recycling South of the Ship Canal. Small business recycling is collected by either the curbside trucks who pick up recyclables from can customers or apartment recycling trucks who pick up recyclables from dumpster customers. Therefore, the tonnages from the small business recycling program appear in both the apartment and curbside programs. We are showing all the small business sign ups on the curbside report. Further, it is not possible to separate these new commercial customer recycling tons from residential recycling tons.

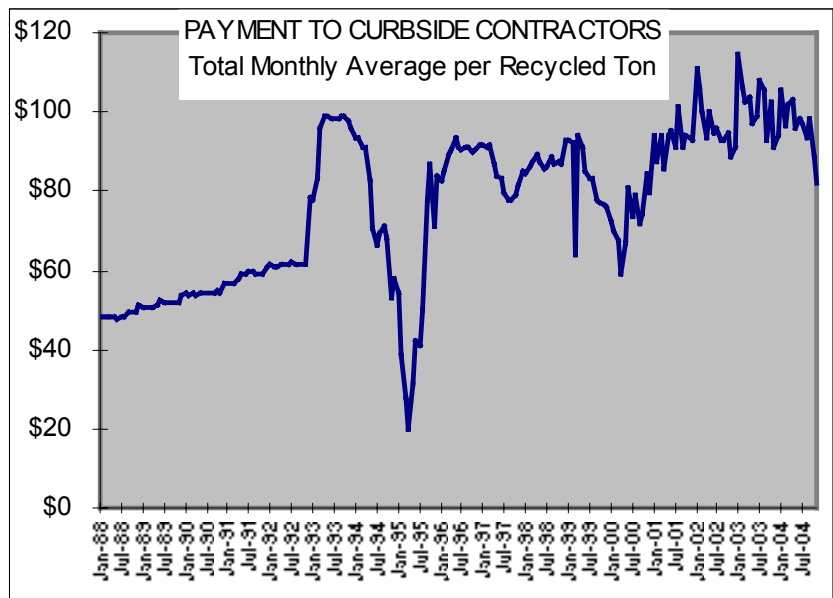
Program Costs⁶

Citywide Cumulative Average Cost/Ton

1988	\$ 48.55	1997	\$ 84.59
1989	\$ 51.33	1998	\$ 86.88
1990	\$ 54.20	1999	\$ 86.39
1991	\$ 58.28	2000 ⁷	\$ 72.78
1992	\$ 61.41	2001	\$ 91.64
1993	\$ 93.25	2002	\$ 96.46
1994	\$ 77.38	2003	\$100.62
1995	\$ 50.27	2004	\$ 95.82
1996	\$ 89.15		

Avg. Cost in December 2004: \$82.11

(Payment to contractors falls when market prices for recyclable materials increase.)



⁵ Small Business sign-up information comes from city billing system.

⁶ Figures shown reflect the average amount SPU pays the recycling contractors, which is a total contract price plus (or minus) a variable amount determined by market prices. In other words, the figures reflect the cost to the city of collection and sorting (including payment for disposal of contaminants). Revenue received for sale of the materials belongs to the contractor and as such these cost figures should not be construed as the total net cost of recycling; figures also do not include costs such as liquidated damages and SPU program administration.

⁷ As of April 2000 recycling program costs include both curbside (single family) and apartment (multi-family) programs. Prior to April 2000, the costs shown are only for the curbside program. Also, average costs from April 2000 through June 2003 were revised due to updated recycle composition study.

CURBSIDE RECYCLING PROGRAM

NORTH END TONNAGE DATA

Yr	Mo	FERROUS			MIXED PAPER	NEWS-PAPER	PLASTIC		CONTAM-INANTS	TOTAL w/cont	TOTAL w/o cont	SET OUTS	ELIGIBLE HOUSEHOLDS ²	POUNDS PER HOUSEHOLD	POUNDS PER SET OUT
		ALUM	METAL	GLASS			(PET/HDPE)	TIN							
2003	1	18.5	1.4	496.9	1,111.2	916.0	62.0	32.4	81.6	2,719.9	2,638.3	NA	69,255	76.2	NA
2003	2	14.1	1.0	377.6	844.6	696.2	47.1	24.6	62.0	2,067.2	2,005.2	NA	69,290	57.9	NA
2003	3	15.9	1.2	427.8	956.8	788.7	53.4	27.9	70.3	2,341.9	2,271.7	NA	69,330	65.5	NA
2003	4	17.1	1.3	459.6	1,028.0	847.3	57.4	29.9	75.5	2,516.1	2,440.6	NA	69,419	70.3	NA
2003	5	16.5	1.2	443.1	991.0	816.9	55.3	28.9	72.8	2,425.7	2,352.9	NA	69,526	67.7	NA
2003	6	17.8	1.3	478.7	1,070.5	882.4	59.7	31.2	78.6	2,620.2	2,541.6	NA	69,613	73.0	NA
2003	7	17.8	1.3	479.4	1,072.1	883.7	59.8	31.2	78.7	2,624.1	2,545.4	NA	69,652	73.1	NA
2003	8	15.9	1.2	427.1	955.2	787.3	53.3	27.8	70.1	2,337.9	2,267.7	NA	69,681	65.1	NA
2003	9	15.6	1.1	419.0	937.1	772.4	52.3	27.3	68.8	2,293.7	2,224.9	NA	69,670	63.9	NA
2003	10	19.4	1.4	521.2	1,165.5	960.7	65.0	33.9	85.6	2,852.8	2,767.2	NA	69,717	79.4	NA
2003	11	16.6	1.2	445.0	995.2	820.3	55.5	29.0	73.1	2,435.9	2,362.9	NA	69,733	67.8	NA
2003	12	19.4	1.4	522.0	1,167.3	962.2	65.1	34.0	85.7	2,857.2	2,771.5	NA	69,729	79.5	NA
2004	1	18.2	1.3	487.8	1,090.9	899.2	60.9	31.8	80.1	2,670.1	2,590.0	NA	69,734	74.3	NA
2004	2	15.2	1.1	409.1	914.9	754.1	51.1	26.6	67.2	2,239.3	2,172.1	NA	69,825	62.2	NA
2004	3	17.6	1.3	473.6	1,059.3	873.1	59.1	30.8	77.8	2,592.7	2,514.9	NA	69,865	72.0	NA
2004	4	16.8	1.2	450.3	1,007.0	830.1	56.2	29.3	73.9	2,464.9	2,390.9	NA	69,943	68.4	NA
2004	5	16.6	1.2	444.8	994.8	820.0	55.5	29.0	73.0	2,434.9	2,361.8	NA	70,013	67.5	NA
2004	6	18.3	1.3	490.3	1,096.6	903.9	61.2	31.9	80.5	2,684.2	2,603.6	NA	70,079	74.3	NA
2004	7	17.0	1.2	456.4	1,020.8	841.4	57.0	29.7	74.9	2,498.5	2,423.5	NA	70,112	69.1	NA
2004	8	17.5	1.3	470.5	1,052.2	867.3	58.7	30.6	77.3	2,575.5	2,498.2	NA	70,208	71.2	NA
2004	9	18.2	1.3	487.8	1,091.0	899.3	60.9	31.8	80.1	2,670.4	2,590.3	NA	70,227	73.8	NA
2004	10	16.6	1.2	445.4	996.1	821.1	55.6	29.0	73.1	2,438.1	2,365.0	NA	70,228	67.4	NA
2004	11	18.9	1.4	507.9	1,135.8	936.2	63.4	33.1	83.4	2,780.1	2,696.7	NA	70,208	76.8	NA
2004	12	21.2	1.6	569.2	1,273.0	1,049.3	71.0	37.1	93.5	3,115.9	3,022.4	NA	70,194	86.1	NA

2004 Total:	211.9	15.6	5,693.2	12,732.5	10,495.1	710.5	370.8	934.8	31,164.4	30,229.6		2004 Avg:	71.9	NA
2003 Total:	204.6	15.0	5,497.4	12,294.6	10,134.1	686.0	358.1	902.7	30,092.5	29,189.8		2003 Avg:	69.9	NA
2002 Total:	205.5	15.1	5,521.2	12,347.9	10,178.1	689.0	359.6	906.6	30,223.0	29,316.4		2002 Avg:	70.6	N/A
2001 Total:	205.9	15.1	5,530.9	12,369.5	10,195.9	690.2	360.2	908.2	30,276.0	29,367.8		2001 Avg:	70.1	N/A
2000 Total:	268.8	20.8	6,424.5	12,321.4	11,151.9	717.5	351.6	992.7	32,012.0	31,256.5		2000 Avg:	74.6	N/A
1999 Total:	476.2	45.9	7,329.5	12,126.4	13,657.2	412.7	952.3	271.6	35,271.7	35,000.1		1999 Avg:	83.6	21.9
1998 Total:	446.4	43.0	6,871.3	11,368.4	12,803.5	386.9	892.8	254.6	33,066.8	32,812.2		1998 Avg:	78.3	22.3
1997 Total:	436.1	42.0	6,712.9	11,106.3	12,508.3	378.0	872.2	248.7	32,304.4	32,055.7		1997 Avg:	76.5	23.0
1996 Total:	408.4	39.3	6,286.3	10,400.6	11,713.5	353.9	816.8	232.9	30,251.8	30,018.9		1996 Avg:	71.7	23.1
1995 Total:	415.2	40.0	6,391.7	10,574.9	11,909.9	359.9	830.5	236.8	30,759.0	30,522.1		1995 Avg:	72.9	24.2
1994 Total:	408.0	39.3	6,279.8	10,389.8	11,701.3	353.6	815.9	232.7	30,220.4	29,987.7		1994 Avg:	71.6	24.7
1993 Total:	379.6	36.6	5,843.1	9,667.2	10,887.6	329.0	759.2	216.5	28,118.7	27,902.2		1993 Avg:	66.4	23.5
1992 Total:	575.2	NA	6,595.5	9,289.1	7,915.0	182.7	917.2	498.2	25,972.9	25,474.7		1992 Avg:	60.7	23.1
1991 Total:	410.6	NA	5,961.3	11,116.4	6,540.8	157.9	1,004.0	252.5	25,443.5	25,191.0		1991 Avg:	60.0	24.1
1990 Total:	658.5	NA	4,874.2	9,687.8	9,057.2	64.1	745.4	115.8	25,203.0	25,087.2		1990 Avg:	59.9	26.6
1989 Total:	320.1	NA	5,296.5	9,118.7	7,524.8	13.3	678.0	31.0	22,982.4	22,951.4		1989 Avg:	58.9	25.8
1988 Total:	159.4	NA	3,574.5	5,186.7	5,411.5	0.0	392.2	39.4	14,763.7	14,724.3		1988 Avg:	41.2	29.2

NORTH END PERCENTAGE BREAKDOWN BY MATERIAL

YEAR	ALUM	FERROUS METAL	GLASS	MIXED PAPER	NEWS-PAPER	PLASTIC (PET/HDPE)	TIN	CONTAM-INANTS	TOTAL w/cont
2004 Avg:	0.68%	0.05%	18.27%	40.86%	33.68%	2.28%	1.19%	3.00%	100%
2003 Avg:	0.68%	0.05%	18.27%	40.86%	33.68%	2.28%	1.19%	3.00%	100%
2002 Avg:	0.68%	0.05%	18.27%	40.86%	33.68%	2.28%	1.19%	3.00%	100%
2001 Avg:	0.68%	0.05%	18.27%	40.86%	33.68%	2.28%	1.19%	3.00%	100%
2000 Avg:	0.84%	0.06%	20.07%	38.49%	34.84%	2.24%	1.10%	3.10%	100%
1999 Avg:	1.35%	0.13%	20.78%	34.38%	38.72%	1.17%	2.70%	0.77%	100%
1998 Avg:	1.35%	0.13%	20.78%	34.38%	38.72%	1.17%	2.70%	0.77%	100%
1997 Avg:	1.35%	0.13%	20.78%	34.38%	38.72%	1.17%	2.70%	0.77%	100%
1996 Avg:	1.35%	0.13%	20.78%	34.38%	38.72%	1.17%	2.70%	0.77%	100%
1995 Avg:	1.35%	0.13%	20.78%	34.38%	38.72%	1.17%	2.70%	0.77%	100%
1994 Avg:	1.35%	0.13%	20.78%	34.38%	38.72%	1.17%	2.70%	0.77%	100%
1993 Avg:	1.35%	0.10%	20.80%	34.44%	38.70%	1.20%	2.70%	0.80%	100%
1992 Avg:	2.20%	NA	25.40%	35.80%	30.50%	0.70%	3.50%	1.90%	100%
1991 Avg:	1.60%	NA	23.70%	43.60%	25.40%	0.60%	4.00%	1.00%	100%
1990 Avg:	1.40%	NA	19.40%	39.00%	36.40%	0.30%	3.00%	0.50%	100%
1989 Avg:	1.40%	NA	23.00%	39.70%	32.70%	0.10%	3.00%	0.10%	100%
1988 Avg:	1.00%	NA	24.20%	35.10%	36.70%	0.00%	2.70%	0.30%	100%

CURBSIDE RECYCLING PROGRAM

SOUTH END TONNAGE DATA																
Yr	Mo	FERROUS			GLASS	MIXED PAPER	NEWS-PAPER	PLASTIC		CONTAM- INANTS	TOTAL w/cont	TOTAL w/o cont	SET OUTS	ELIGIBLE HOUSEHOLDS ²	POUNDS PER HOUSEHOLD	POUNDS PER SET OUT
		ALUM	METAL	(PET/HDPE)				TIN								
2003	1	17.8	6.4	462.2	1190.3	1009.5	65.5	31.3	141.9	2,925.0	2,783.2	NA	76,879	72.4	NA	
2003	2	13.9	5.0	360.2	927.6	786.7	51.1	24.4	110.6	2,279.4	2,168.8	NA	76,951	56.4	NA	
2003	3	14.8	5.3	383.0	986.4	836.6	54.3	25.9	117.6	2,423.9	2,306.3	NA	77,025	59.9	NA	
2003	4	16.2	5.8	418.7	1078.4	914.6	59.4	28.4	128.5	2,649.9	2,521.4	NA	77,186	65.3	NA	
2003	5	16.1	5.8	418.0	1076.5	913.0	59.3	28.3	128.3	2,645.4	2,517.1	NA	77,268	65.2	NA	
2003	6	16.3	5.9	421.7	1086.0	921.0	59.8	28.6	129.4	2,668.6	2,539.2	NA	77,387	65.6	NA	
2003	7	16.9	6.1	438.9	1130.2	958.5	62.2	29.7	134.7	2,777.3	2,642.6	NA	77,466	68.2	NA	
2003	8	15.5	5.6	401.6	1034.1	877.1	56.9	27.2	123.3	2,541.3	2,418.0	NA	77,591	62.3	NA	
2003	9	16.7	6.0	433.3	1115.8	946.3	61.4	29.3	133.0	2,741.8	2,608.9	NA	77,595	67.2	NA	
2003	10	17.1	6.2	443.0	1140.9	967.7	62.8	30.0	136.0	2,803.7	2,667.7	NA	77,619	68.7	NA	
2003	11	15.8	5.7	408.7	1052.6	892.7	57.9	27.7	125.5	2,586.5	2,461.1	NA	77,619	63.4	NA	
2003	12	18.3	6.6	473.6	1219.7	1034.5	67.1	32.1	145.4	2,997.2	2,851.9	NA	77,587	73.5	NA	
2004	1	18.0	6.5	465.5	1198.8	1016.7	66.0	31.5	142.9	2,945.8	2,802.9	NA	77,646	72.2	NA	
2004	2	14.3	5.2	370.2	953.3	808.5	52.5	25.1	113.6	2,342.5	2,228.9	NA	77,693	57.4	NA	
2004	3	16.8	6.1	436.3	1123.6	953.0	61.9	29.5	133.9	2,761.1	2,627.2	NA	77,809	67.5	NA	
2004	4	16.0	5.8	414.1	1066.5	904.5	58.7	28.0	127.1	2,620.9	2,493.7	NA	77,906	64.0	NA	
2004	5	15.8	5.7	409.6	1054.8	894.6	58.1	27.7	125.7	2,592.1	2,466.3	NA	77,990	63.2	NA	
2004	6	17.3	6.2	447.8	1153.3	978.2	63.5	30.3	137.5	2,834.1	2,696.6	NA	78,076	69.1	NA	
2004	7	16.7	6.0	433.7	1116.9	947.3	61.5	29.4	133.1	2,744.6	2,611.5	NA	78,118	66.9	NA	
2004	8	16.6	6.0	429.7	1106.5	938.5	60.9	29.1	131.9	2,719.1	2,587.2	NA	78,252	66.1	NA	
2004	9	17.3	6.2	447.4	1152.2	977.2	63.4	30.3	137.3	2,831.3	2,693.9	NA	78,287	68.8	NA	
2004	10	15.9	5.7	412.2	1061.5	900.3	58.4	27.9	126.5	2,608.5	2,482.0	NA	78,289	63.4	NA	
2004	11	18.1	6.5	468.6	1206.7	1023.4	66.4	31.7	143.8	2,965.3	2,821.4	NA	78,269	72.1	NA	
2004	12	19.4	7.0	501.3	1291.0	1094.9	71.1	33.9	153.9	3,172.4	3,018.6	NA	78,297	77.1	NA	
2004 Total:		202.2	72.9	5,236.3	13,485.1	11,437.0	742.4	354.6	1,607.3	33,137.8	31,530.4		2004 Avg:	67.3	NA	
2003 Total:		195.5	70.5	5,062.8	13,038.4	11,058.1	717.8	342.9	1,554.1	32,040.0	30,485.9		2003 Avg:	65.7	NA	
2002 Total:		192.9	69.6	4,997.0	12,868.9	10,914.4	708.4	338.4	1,533.9	31,623.6	30,089.7		2002 Avg:	65.4	NA	
2001 Total:		191.6	69.1	4,962.4	12,779.7	10,838.8	703.5	336.1	1,523.3	31,404.4	29,881.2		2001 Avg:	63.4	NA	
2000 Total:		221.5	64.7	5,538.6	12,665.2	11,347.8	724.6	396.2	1,439.5	32,398.0	30,958.5		2000 Avg:	65.7	NA	
1999 Total:		323.5	35.9	5,639.7	10,743.8	10,290.1	314.6	487.5	755.2	28,590.2	27,835.1		1999 Avg:	59.1	74.8	
1998 Total:		316.4	35.2	5,516.6	10,509.2	10,065.4	307.7	476.9	738.7	27,965.9	27,227.2		1998 Avg:	57.8	71.8	
1997 Total:		304.9	33.9	5,316.2	10,127.4	9,699.7	296.5	459.6	711.9	26,950.1	26,238.2		1997 Avg:	55.7	67.4	
1996 Total:		284.7	31.6	4,963.1	9,454.8	9,055.5	276.8	429.1	664.6	25,160.2	24,495.6		1996 Avg:	52.0	63.2	
1995 Total:		292.5	32.5	5,099.1	9,713.8	9,303.6	284.4	440.8	682.8	25,849.4	25,166.6		1995 Avg:	53.2	66.6	
1994 Total:		288.4	32.0	5,027.6	9,577.7	9,173.3	280.4	434.6	673.2	25,487.3	24,814.1		1994 Avg:	52.7	67.5	
1993 Total:		273.2	30.4	4,763.7	9,074.9	8,691.7	228.5	411.8	637.9	24,149.3	23,474.2		1993 Avg:	49.8	71.6	
1992 Total:		287.6	NA	4,106.5	8,321.5	9,497.9	106.1	492.7	761.4	23,573.7	22,812.3		1992 Avg:	48.4	68.5	
1991 Total:		274.0	NA	3,579.1	8,421.4	9,562.4	110.4	419.7	751.9	23,118.9	22,367.0		1991 Avg:	47.5	70.1	
1990 Total:		236.6	NA	4,222.7	7,514.0	8,315.8	99.0	561.4	570.1	21,519.6	20,949.5		1990 Avg:	43.9	72.3	
1989 Total:		113.1	NA	3,374.9	6,030.9	7,590.8	75.6	601.9	90.0	17,877.2	17,787.2		1989 Avg:	36.2	70.2	
1988 Total:		82.9	NA	1,259.1	2,553.0	5,069.9	0.0	257.0	0.0	9,221.9	9,221.9		1988 Avg:	25.0	74.9	

SOUTH END PERCENTAGE BREAKDOWN BY MATERIAL										
YEAR	ALUM	FERROUS METAL	GLASS	MIXED PAPER	NEWS-PAPER	PLASTIC (PET/HDPE)	TIN	CONTAM- INANTS	TOTAL w/cont	TOTAL w/o cont
2004 Avg:	0.61%	0.22%	15.80%	40.69%	34.51%	2.24%	1.07%	4.85%	100%	
2003 Avg:	0.61%	0.22%	15.80%	40.69%	34.51%	2.24%	1.07%	4.85%	100%	
2002 Avg:	0.61%	0.22%	15.80%	40.69%	34.51%	2.24%	1.07%	4.85%	100%	
2001 Avg:	0.61%	0.22%	15.80%	40.69%	34.51%	2.24%	1.07%	4.85%	100%	
2000 Avg:	0.68%	0.20%	17.10%	39.09%	35.03%	2.24%	1.22%	4.44%	100%	
1999 Avg:	1.13%	0.13%	19.73%	37.58%	35.99%	1.10%	1.71%	2.64%	100%	
1998 Avg:	1.13%	0.13%	19.73%	37.58%	35.99%	1.10%	1.71%	2.64%	100%	
1997 Avg:	1.13%	0.13%	19.73%	37.58%	35.99%	1.10%	1.71%	2.64%	100%	
1996 Avg:	1.13%	0.13%	19.73%	37.58%	35.99%	1.10%	1.71%	2.64%	100%	
1995 Avg:	1.13%	0.13%	19.73%	37.58%	35.99%	1.10%	1.71%	2.64%	100%	
1994 Avg:	1.13%	0.09%	19.73%	37.62%	36.03%	1.10%	1.71%	2.64%	100%	
1993 Avg:	1.15%	0.10%	19.18%	37.08%	37.06%	0.95%	1.80%	2.79%	100%	
1992 Avg:	1.20%	NA	17.40%	35.30%	40.30%	0.50%	2.10%	3.20%	100%	
1991 Avg:	1.20%	NA	15.50%	36.40%	41.40%	0.50%	1.80%	3.30%	100%	
1990 Avg:	1.10%	NA	19.60%	34.90%	38.60%	0.50%	2.60%	2.70%	100%	
1989 Avg:	0.60%	NA	18.90%	33.70%	42.50%	0.40%	3.40%	0.50%	100%	
1988 Avg:	0.90%	NA	13.70%	27.70%	55.00%	0.00%	2.80%	0.00%	100%	

CURBSIDE RECYCLING PROGRAM

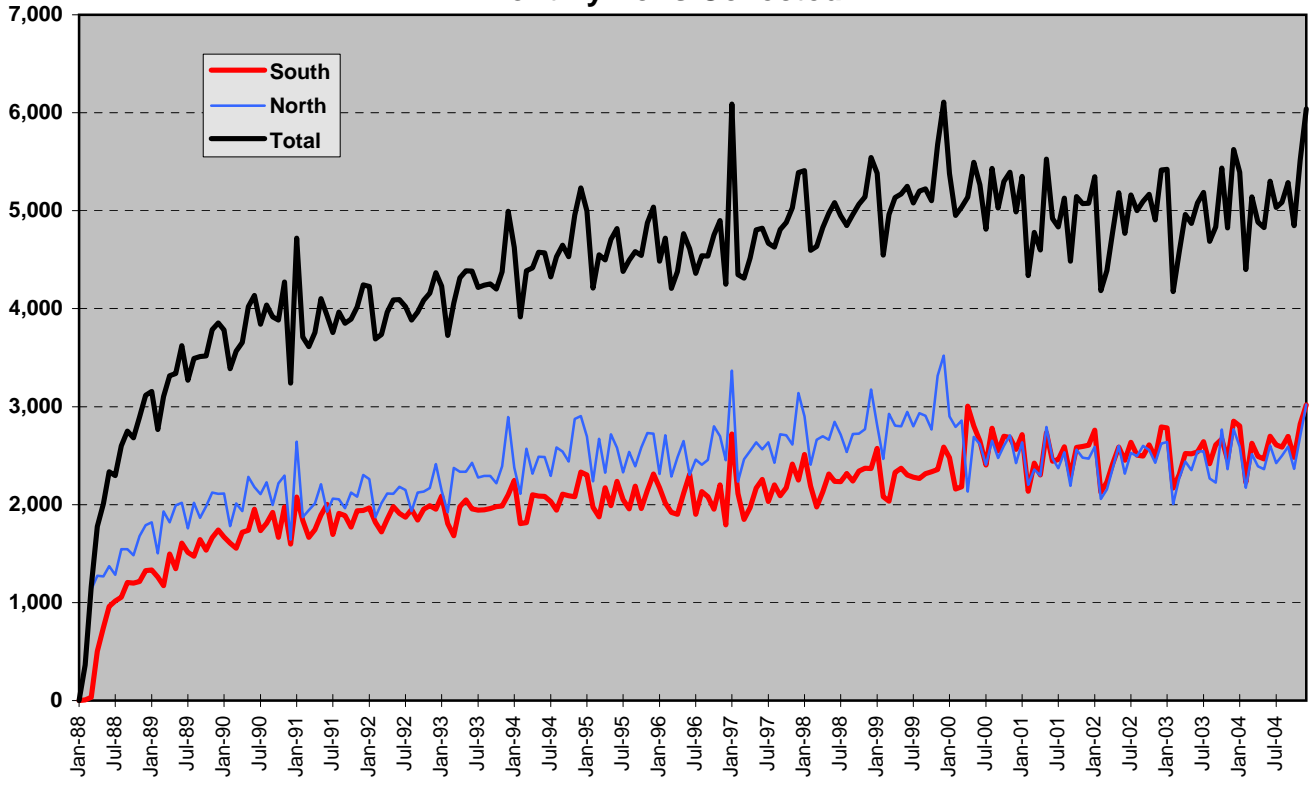
TOTAL CITY TONNAGE DATA														
Yr	Mo	FERROUS			MIXED PAPER	NEWS-PAPER	PLASTIC (PET/HDPE)	TIN	CONTAM- INANTS	TOTAL w/cont	TOTAL w/o cont	SET OUTS	ELIGIBLE HOUSEHOLDS ²	POUNDS PER HOUSEHOLD
		ALUM	METAL	GLASS										
2003	1	36.3	7.8	959.1	2,301.5	1,925.5	127.5	63.7	223.5	5,644.9	5,421.4	NA	146,134	74.2
2003	2	28.0	6.0	737.8	1,772.2	1,482.9	98.2	49.0	172.6	4,346.6	4,174.0	NA	146,241	57.1
2003	3	30.7	6.5	810.8	1,943.2	1,625.2	107.7	53.8	187.8	4,765.8	4,577.9	NA	146,355	62.6
2003	4	33.3	7.1	878.4	2,106.3	1,761.9	116.7	58.3	204.0	5,166.0	4,962.0	NA	146,605	67.7
2003	5	32.6	7.0	861.1	2,067.6	1,729.9	114.6	57.2	201.1	5,071.1	4,870.0	NA	146,794	66.4
2003	6	34.1	7.2	900.3	2,156.5	1,803.4	119.5	59.7	208.0	5,288.8	5,080.8	NA	147,000	69.1
2003	7	34.8	7.4	918.2	2,202.3	1,842.2	122.0	60.9	213.4	5,401.4	5,187.9	NA	147,118	70.5
2003	8	31.4	6.8	828.6	1,989.3	1,664.4	110.2	55.0	193.4	4,879.1	4,685.7	NA	147,272	63.6
2003	9	32.3	7.2	852.3	2,052.9	1,718.7	113.7	56.6	201.8	5,035.5	4,833.7	NA	147,265	65.6
2003	10	36.5	7.6	964.2	2,306.5	1,928.4	127.8	63.9	221.6	5,656.5	5,434.9	NA	147,336	73.8
2003	11	32.3	6.9	853.7	2,047.8	1,713.0	113.5	56.7	198.5	5,022.5	4,824.0	NA	147,352	65.5
2003	12	37.7	8.0	995.6	2,387.0	1,996.7	132.3	66.1	231.1	5,854.4	5,623.4	NA	147,316	76.3
2004	1	36.1	7.8	953.3	2,289.7	1,915.9	126.9	63.3	223.0	5,616.0	5,393.0	NA	147,380	73.2
2004	2	29.5	6.3	779.2	1,868.2	1,562.6	103.5	51.7	180.8	4,581.8	4,401.0	NA	147,518	59.7
2004	3	34.5	7.4	909.9	2,182.9	1,826.1	121.0	60.4	211.7	5,353.8	5,142.1	NA	147,674	69.6
2004	4	32.7	7.0	864.4	2,073.6	1,734.6	114.9	57.4	201.1	5,085.7	4,884.7	NA	147,849	66.1
2004	5	32.4	6.9	854.4	2,049.6	1,714.6	113.6	56.7	198.8	5,026.9	4,828.2	NA	148,003	65.2
2004	6	35.5	7.6	938.2	2,250.0	1,882.1	124.7	62.3	218.0	5,518.3	5,300.3	NA	148,155	71.6
2004	7	33.7	7.3	890.1	2,137.7	1,788.7	118.4	59.1	208.1	5,243.1	5,035.0	NA	148,230	67.9
2004	8	34.1	7.3	900.2	2,158.8	1,805.8	119.6	59.7	209.1	5,294.6	5,085.5	NA	148,460	68.5
2004	9	35.4	7.6	935.2	2,243.2	1,876.5	124.3	62.1	217.4	5,501.7	5,284.3	NA	148,514	71.2
2004	10	32.5	7.0	857.6	2,057.6	1,721.4	114.0	56.9	199.7	5,046.6	4,847.0	NA	148,517	65.3
2004	11	37.0	7.9	976.4	2,342.5	1,959.6	129.8	64.8	227.2	5,745.3	5,518.1	NA	148,477	74.3
2004	12	40.5	8.5	1,070.5	2,564.0	2,144.2	142.1	71.0	247.3	6,288.3	6,041.0	NA	148,491	81.4

2004 Total:	414.1	88.5	10,929.5	26,217.6	21,932.1	1,452.8	725.4	2,542.2	64,302.2	61,760.0		2004 Avg:	69.5
2003 Total:	400.1	85.5	10,560.2	25,333.0	21,192.3	1,403.8	700.9	2,456.8	62,132.5	59,675.7		2003 Avg:	67.7
2002 Total:	398.4	84.7	10,518.2	25,216.8	21,092.5	1,397.5	698.0	2,440.5	61,846.6	59,406.1		2002 Avg:	67.9
2001 Total:	397.4	84.2	10,493.3	25,149.3	21,034.7	1,393.8	696.3	2,431.5	61,680.4	59,249.0		2001 Avg:	66.6
2000 Total:	490.2	85.5	11,963.1	24,986.6	22,499.7	1,442.1	747.8	2,432.2	64,410.0	62,215.0		2000 Avg:	69.9
1999 Total:	799.6	81.8	12,969.2	22,870.2	23,947.3	727.3	1,439.9	1,026.8	63,862.0	62,835.2		1999 Avg:	70.6
1998 Total:	762.8	78.2	12,387.9	21,877.6	22,868.9	694.6	1,369.7	993.3	61,032.7	60,039.4		1998 Avg:	67.5
1997 Total:	741.0	75.9	12,029.0	21,233.7	22,208.0	674.5	1,331.8	960.6	59,254.5	58,293.9		1997 Avg:	67.5
1996 Total:	693.1	71.0	11,249.4	19,855.4	20,769.0	630.8	1,245.9	897.5	55,412.0	54,514.5		1996 Avg:	61.3
1995 Total:	707.7	72.5	11,490.8	20,288.7	21,213.5	644.3	1,271.3	919.6	56,608.4	55,688.7		1995 Avg:	63.1
1994 Total:	696.3	71.3	11,307.4	19,967.5	20,874.6	634.0	1,250.6	905.9	55,707.7	54,801.8		1994 Avg:	61.6
1993 Total:	652.8	66.9	10,606.8	18,742.1	19,579.3	557.5	1,171.0	854.4	52,268.0	51,376.4		1993 Avg:	57.7
1992 Total:	862.8	NA	10,702.0	17,610.6	17,412.9	288.8	1,409.9	1,259.6	49,546.6	48,287.0		1992 Avg:	54.2
1991 Total:	684.6	NA	9,540.4	19,537.8	16,103.2	268.3	1,423.7	1,004.4	48,562.4	47,558.0		1991 Avg:	53.4
1990 Total:	895.1	NA	9,096.9	17,201.8	17,373.0	163.1	1,306.8	685.9	46,722.6	46,036.7		1990 Avg:	51.3
1989 Total:	433.2	NA	8,671.4	15,149.6	15,115.6	88.9	1,279.9	121.0	40,859.6	40,738.6		1989 Avg:	46.2
1988 Total:	242.3	NA	4,833.6	7,739.7	10,481.4	0.0	649.2	39.4	23,985.6	23,946.2		1988 Avg:	31.9

TOTAL CITY PERCENTAGE BREAKDOWN BY MATERIAL									
YEAR	FERROUS			MIXED PAPER	NEWS-PAPER	PLASTIC (PET/HDPE)	TIN	CONTAM- INANTS	TOTAL w/cont
	ALUM	METAL	GLASS						
2004 Avg:	0.64%	0.14%	17.00%	40.77%	34.11%	2.26%	1.13%	3.95%	100%
2003 Avg:	0.64%	0.14%	17.00%	40.77%	34.11%	2.26%	1.13%	3.95%	100%
2002 Avg:	0.64%	0.14%	17.01%	40.77%	34.10%	2.26%	1.13%	3.95%	100%
2001 Avg:	0.64%	0.14%	17.01%	40.77%	34.10%	2.26%	1.13%	3.94%	100%
2000 Avg:	0.76%	0.13%	18.57%	38.79%	34.93%	2.24%	1.16%	3.78%	100%
1999 Avg:	1.25%	0.13%	20.31%	35.81%	37.50%	1.14%	2.25%	1.61%	100%
1998 Avg:	1.25%	0.13%	20.30%	35.85%	37.47%	1.14%	2.24%	1.63%	100%
1997 Avg:	1.25%	0.13%	20.30%	35.83%	37.48%	1.14%	2.25%	1.62%	100%
1996 Avg:	1.25%	0.13%	20.30%	35.83%	37.48%	1.14%	2.25%	1.62%	100%
1995 Avg:	1.25%	0.13%	20.30%	35.84%	37.47%	1.14%	2.25%	1.62%	100%
1994 Avg:	1.25%	0.13%	20.30%	35.84%	37.47%	1.14%	2.24%	1.63%	100%
1993 Avg:	1.25%	0.13%	20.29%	35.86%	37.46%	1.07%	2.24%	1.63%	100%
1992 Avg:	1.74%	NA	21.60%	35.54%	35.14%	0.58%	2.85%	2.54%	100%
1991 Avg:	1.41%	NA	19.65%	40.23%	33.16%	0.55%	2.93%	2.07%	100%
1990 Avg:	1.92%	NA	19.47%	36.82%	37.18%	0.35%	2.80%	1.47%	100%
1989 Avg:	1.06%	NA	21.22%	37.08%	36.99%	0.22%	3.13%	0.30%	100%
1988 Avg:	1.01%	NA	20.15%	32.27%	43.70%	0.00%	2.71%	0.16%	100%

1. November and December 2000 total tons collected were significantly lower than those same months in 1999. Part of the decline may be attributed to the newspaper strike which extended from November 21, 2000 - January 9, 2001
 2. Beginning Jan 1, 2002 household data based on new billing system (Banner)

CURBSIDE RECYCLING Monthly Tons Collected



CURBSIDE RECYCLING Cumulative Tons Collected 2004

