

YARD WASTE REPORT

December 2001

Seattle Public Utilities, Resource Planning Division, Forecasting & Evaluation Section

Report Date: February 5, 2002

Phone: (206) 684-4143

Tonnage

Total Yard Waste in December:	1,846 Tons	11.6% decrease vs. same period in '00
Cumulative Total Yard Waste:	52,024 Tons	8.2% increase vs. same period in '00
Curbside Yard Waste in December:	1,074 Tons	19.7% decrease vs. same period in '00
Cumulative Curbside Yard Waste:	36,990 Tons	8.7% increase vs. same period in '00
Self Haul Yard Waste in December:	772 Tons	2.9% increase vs. same period in '00
Cumulative Self Haul Yard Waste:	15,034 Tons	7.1% increase vs. same period in '00

Selected Statistics

Number of Accounts¹ Subscribed to Curbside Yard Waste Program as of December 2001:
86,368 (58% of 149,074 total accounts).

Approximate Pounds per Subscribed Account for Curbside Yard Waste Program

January - December 2000:	66 pounds per month
January - December 2001:	42 pounds per month

Basics of Curbside Yard Waste Program

CURRENT Biweekly pickup March through November and monthly pickup December through February.

MATERIALS: Leaves, grass clippings, prunings (must be 4 inches or less in diameter)
It is illegal to put yard waste in the curbside garbage can.

SERVICE FEE: \$4.25 per month. For up to 4 bags in bundles every other week. Each additional bag/bundle is \$1.50 each. The \$1.50 fee for extra bag/bundles became effective June 2000. Prior to that, residents paid a fixed fee for collection of up to 20 bags/bundles per month.

Basics of Self Haul Transfer Station Program

SERVICE: Two City-owned transfer stations accept yard waste during the regular operating hours of the stations. Yard waste must be separated and cannot be disposed of as garbage.

SERVICE FEES: Cars: \$11.05 per trip (compared to \$13.35 per trip for garbage).
Trucks: \$70.60 per ton (compared to \$96.25 per ton for garbage).

¹ An "account" refers to billing for combined water, sewer, and garbage. An apartment building with 5 or 500 units would show up as one account, as would a single family residence.

CITY OF SEATTLE YARD WASTE PROGRAM

Self Haul & Curbside Collection Tons (2000-2001)

Year	Month	Self Haul North ¹	Self Haul South ¹	Curbside North/WM	Curbside South/USD	Self Haul Total*	Curbside Total	Total Yard Waste
2000	1	512	252	1,012	350	764	1,363	2,126
2000	2	576	369	955	345	945	1,300	2,246
2000	3	652	431	2,091	686	1,084	2,777	3,860
2000	4	846	565	1,608	1,726	1,411	3,333	4,744
2000	5	846	613	2,105	2,339	1,458	4,444	5,902
2000	6	933	637	2,253	2,258	1,571	4,511	6,082
2000	7	933	658	1,755	1,800	1,591	3,555	5,146
2000	8	729	546	1,498	1,433	1,274	2,931	4,206
2000	9	652	533	1,323	1,256	1,185	2,580	3,765
2000	10	623	452	1,387	1,418	1,075	2,805	3,880
2000	11	532	391	1,565	1,536	923	3,101	4,024
2000	12	446	304	688	650	750	1,338	2,088
2001	1	457	319	747	729	776	1,476	2,252
2001	2	501	345	572	518	846	1,091	1,937
2001	3	732	574	1,446	1,383	1,306	2,829	4,135
2001	4	723	630	1,932	1,871	1,353	3,803	5,156
2001	5	852	740	2,683	2,684	1,592	5,367	6,959
2001	6	925	732	2,301	2,242	1,656	4,543	6,199
2001	7	890	779	1,822	2,040	1,669	3,862	5,531
2001	8	742	618	1,510	1,563	1,360	3,074	4,434
2001	9	694	534	1,232	1,347	1,228	2,579	3,807
2001	10	671	604	1,447	1,547	1,275	2,995	4,269
2001	11	666	534	2,167	2,130	1,200	4,297	5,497
2001	12	426	346	552	522	772	1,074	1,846
Total 2001:		8,279	6,755	18,412	18,578	15,034	36,990	52,024
Total 2000:		8,280	5,752	18,240	15,797	14,031	34,037	48,068
Total 1999:		8,186	5,506	28,080	11,657	13,692	39,737	53,428
Total 1998:		8,122	4,912	28,286	12,260	13,034	40,546	53,580
Total 1997:		8,574	5,563	30,017	13,113	14,137	43,130	57,267
Total 1996:		7,341	4,186	27,491	11,842	11,527	39,333	50,860
Total 1995:		7,567	4,596	29,122	11,622	12,163	40,745	52,907
Total 1994:		7,045	4,952	26,099	10,974	11,997	37,073	49,070
Total 1993 ² :		8,019	5,423	30,113	12,582	13,442	42,695	56,137
Total 1992 ² :		6,430	5,124	24,547	10,243	11,553	34,790	46,343
Total 1991:		8,814	5,908	28,103	11,100	14,722	39,203	53,924
Total 1990:		7,339	5,625	25,936	10,845	12,964	36,780	49,744
Total 1989:		6,495	4,753	22,812	8,845	11,249	31,657	42,905

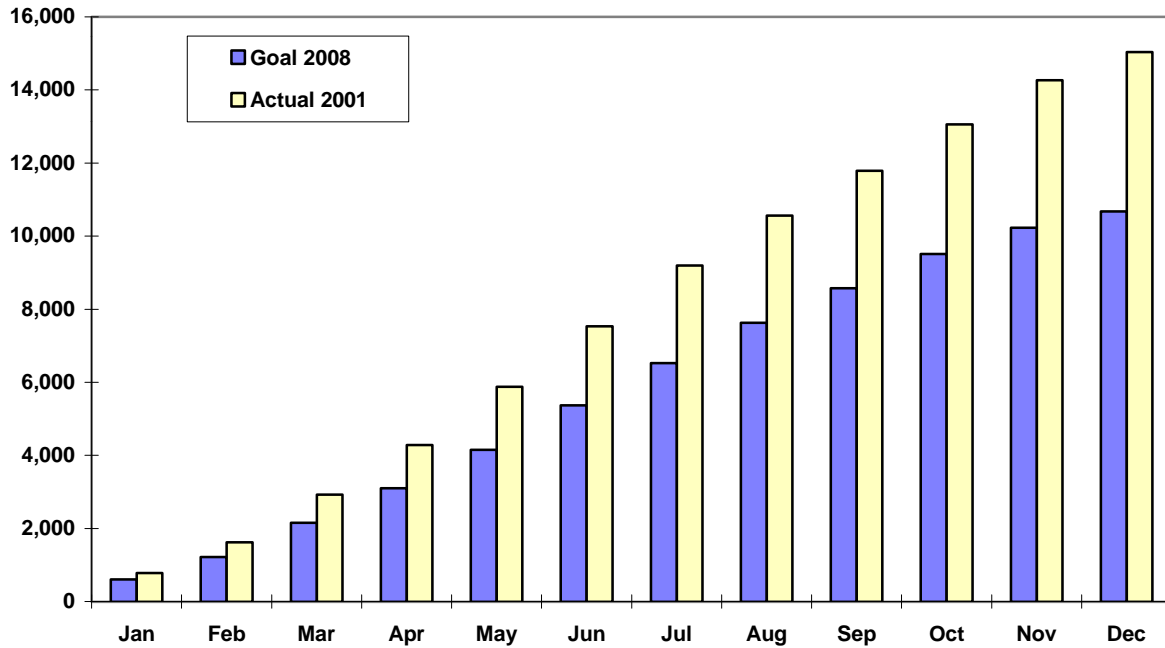
1) Self haul includes cars and trucks. Cars are not weighed at the stations so car tons are estimated based on the number of cars.

The average weight of cars bringing yard waste is 258 pounds per car based on sampling conducted in 1995.

2) Note that the fairly large increase in tonnage from 1992 to 1993 is due to two factors:

- a) 1992 tonnage was the lowest since 1989 due to the drought and lawn watering ban which extended from June 1 - November 2, 1992.
- b) 1993 tonnage was high due to abundant precipitation in the spring and summer months.

SELF HAUL YARD WASTE Cumulative Tons 2001



SELF HAUL YARD WASTE Monthly Tons

