

Q45 – Summary of Source Control Program Actions (2025)

1. Business Inspection Program - Summary of Actions:

The City implements a Source Control program (S5.C.8) to reduce pollutants in runoff from areas of existing development that discharge to the MS4. This includes an inspection program for businesses and/or properties identified based on the presence of activities that are pollutant generating.

Below is a summary of the City's actions taken in 2025 to implement these source control requirements (S5.C.8.c).

- (1) **Permit condition S5.C.8.c.i:** The City distributes site-specific materials and provides technical assistance during source control business inspections. The Seattle Green Business Program and the relaunched regional Envirostars Program also provide stormwater best management practice information during site visits and through their hotline and website. Information of a general nature is provided on social media via Twitter and Facebook and on the City's webpage.

In 2025, SPU developed and mailed a new stormwater BMP-focused postcard to the entire business inventory of over 1800 businesses; see Figures 1 and 2.

- (2) **Permit condition S5.C.8.c.ii:** In 2025, the City of Seattle conducted 395 source control inspections on properties draining to the MS4 in Seattle. These inspections include initial site inspections, follow-up visits and audit inspections. This represents **21%** of the targeted inventory. Sites are prioritized for inspection based on risk level, which determines inspection frequency (high = 2 yrs, medium = 4 yrs, low = 6 yrs). Risk level is determined by outdoor activity, business type, etc.
- (3) **Permit condition S5.C.8.c.iii:** All businesses identified through the complaint program received inspections (100%).

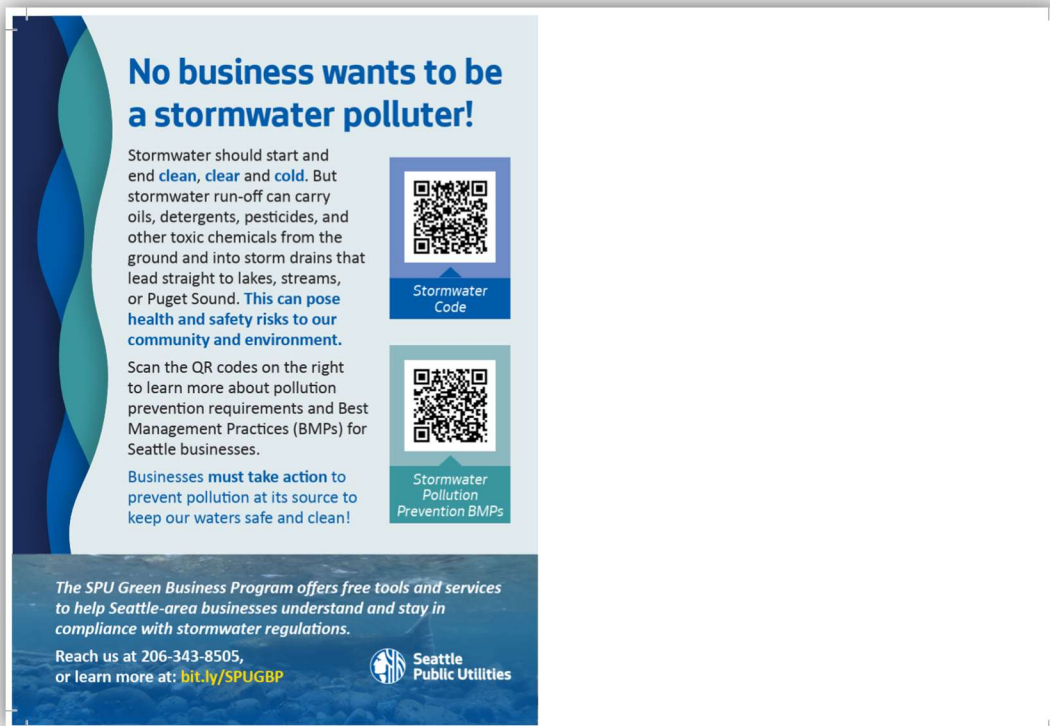


Figure 1: Front page of a new stormwater and stormwater BMP postcard sent to the entire source control business inventory in 2025.



Figure 2: Back page of a new stormwater and stormwater BMP postcard sent to the entire source control business inventory in 2025.

2. Progressive Enforcement Policy - Summary of Actions:

The City implements a progressive policy to require sites to come into compliance with stormwater requirements within a reasonable time period. The progressive enforcement policy includes a corrective action letter and a notice of violation. The responsible party can also enter into a voluntary compliance agreement. If the violation cannot be resolved, the case may be referred to Ecology for enforcement.

Below is a summary of enforcement actions taken in 2025 for the Business Inspection Program (S5.C.8.c), the Private Stormwater Facility Program (S5.C.10.b), the Complaints/Spill Response Program (S5.C.9.c & d), and the Dry Weather Screening Program (S5.C.9.c).¹ Records are maintained electronically.

Source Control Enforcement Actions by Program Type

Program Type	Corrective Action Letter	Second and Final	Notice of Violation	Voluntary Compliance Agreement	Ecology Referral
Business Inspection Program	114	No Longer Used	3	0	0
Private Stormwater Facility Program	162	Phasing Out/No Longer Used	2	0	0
Water Quality Complaints	0*	0	0	0	0
Spill Response	0*	0	5**	0	0
Dry Weather Screening	1	0	0	0	0

*Corrective Actions would be issued through the follow up business inspection process.

**Three Spill NOV's were identified during Business Inspections (BMP 1).

Records are maintained electronically and data can be provided upon request.

¹ Complaint response, spill response and the Dry Weather Screening Program form part of the "Illicit Connections and Illicit Discharges Detection and Elimination (IDDE) Program" as it is referred to in the MS4 Permit.