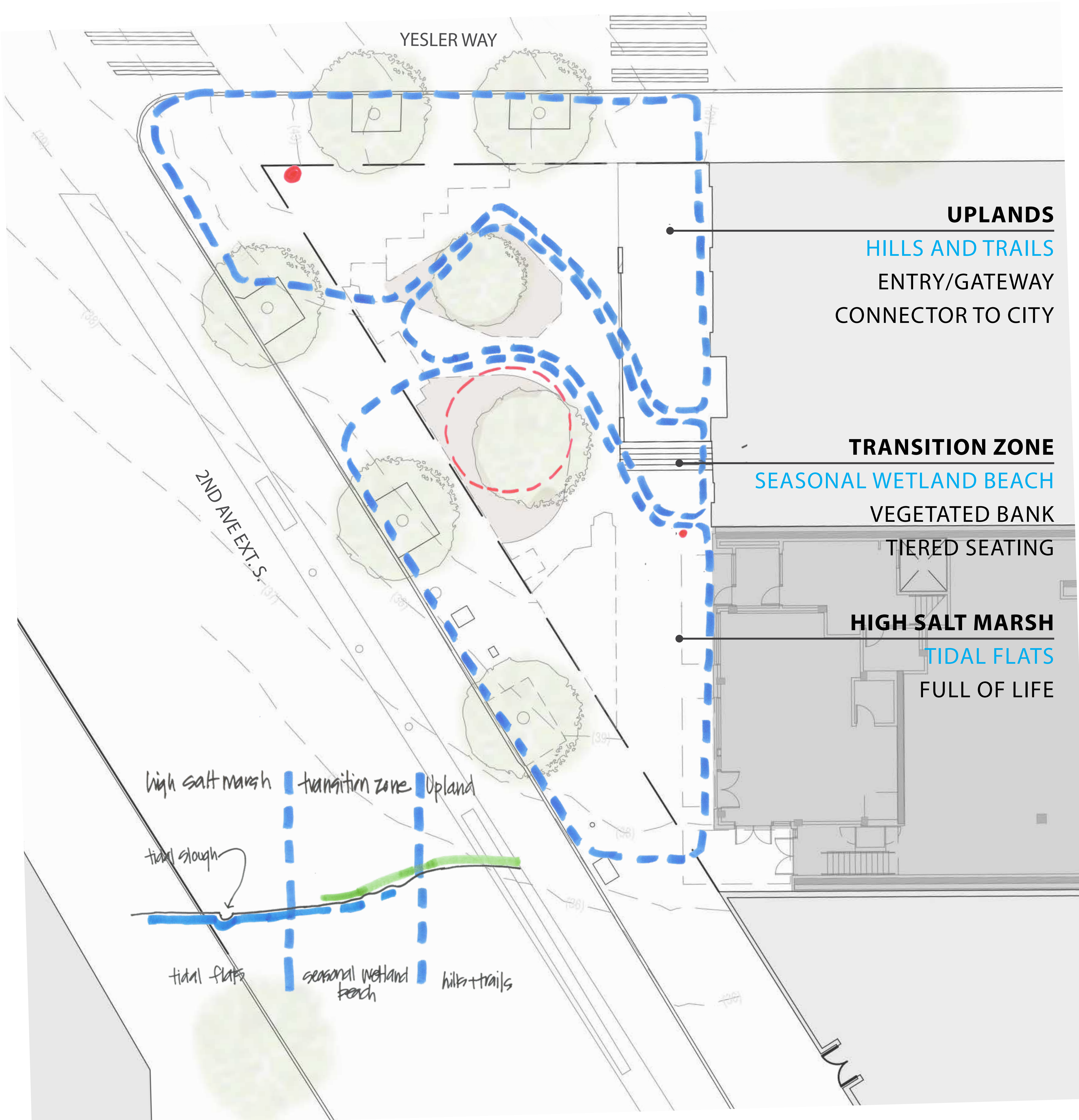


FORTSON SQUARE REDESIGN: CONCEPT DIAGRAM AND INSPIRATIONAL IMAGES



The shed-style longhouses of this central Coast Salish village are similar, though smaller than those usually built further south, around Puget Sound. 1866 {Royal British Columbia Museum}



Shoreline land form similar to Little Crossing-Over Place
 Courtesy of Washington Dept. of Ecology. Soundview camp property, Pierce County. ecologywa.blogspot.com

FORTSON SQUARE REDESIGN



JONES JONES

ARCHITECTS
LANDSCAPE ARCHITECTS
PLANNERS
105 SOUTH MAIN STREET
SUITE 300
SEATTLE, WA 98104
206 424 5700
www.jonesandjones.com

SCHEMATIC DESIGN

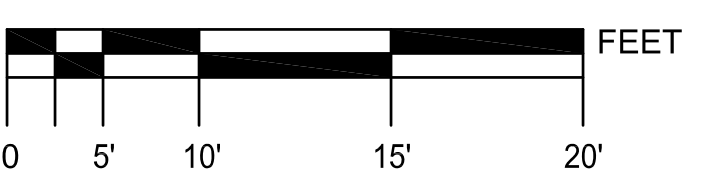
FORTSON SQUARE REDESIGN
108 2nd Ave Ext S
Seattle, WA 98104

DATE: 3 APRIL 2020

REVISIONS:

DEMO PLAN

SCALE: VARIES



DRAWN BY: JLL

CHECKED BY: HLH

JOB NO.: 23006.009

SHEET NO.: **G100**

All drawings and material appearing herein are the original and unpublished work of the architect and may not be duplicated, used, or disclosed without the written consent of Jones & Jones.



16622.dwg Jones & Jones.com\jll\jones\fortson_square_23006.009\00-G100.dwg 4/20/20 3:55 PM

FORTSON SQUARE REDESIGN



JONES JONES

ARCHITECTS
LANDSCAPE ARCHITECTS
PLANNERS
105 SOUTH MAIN STREET
SUITE 300
SEATTLE, WA 98104
206.424.5700
www.jonesandjones.com

SCHEMATIC DESIGN

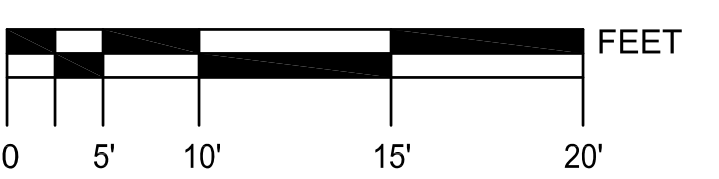
FORTSON SQUARE REDESIGN
108 2nd Ave Ext S
Seattle, WA 98104

DATE: 3 APRIL 2020

REVISIONS:

SITE REFERENCE
PLAN

SCALE: 1" = 10'-0"



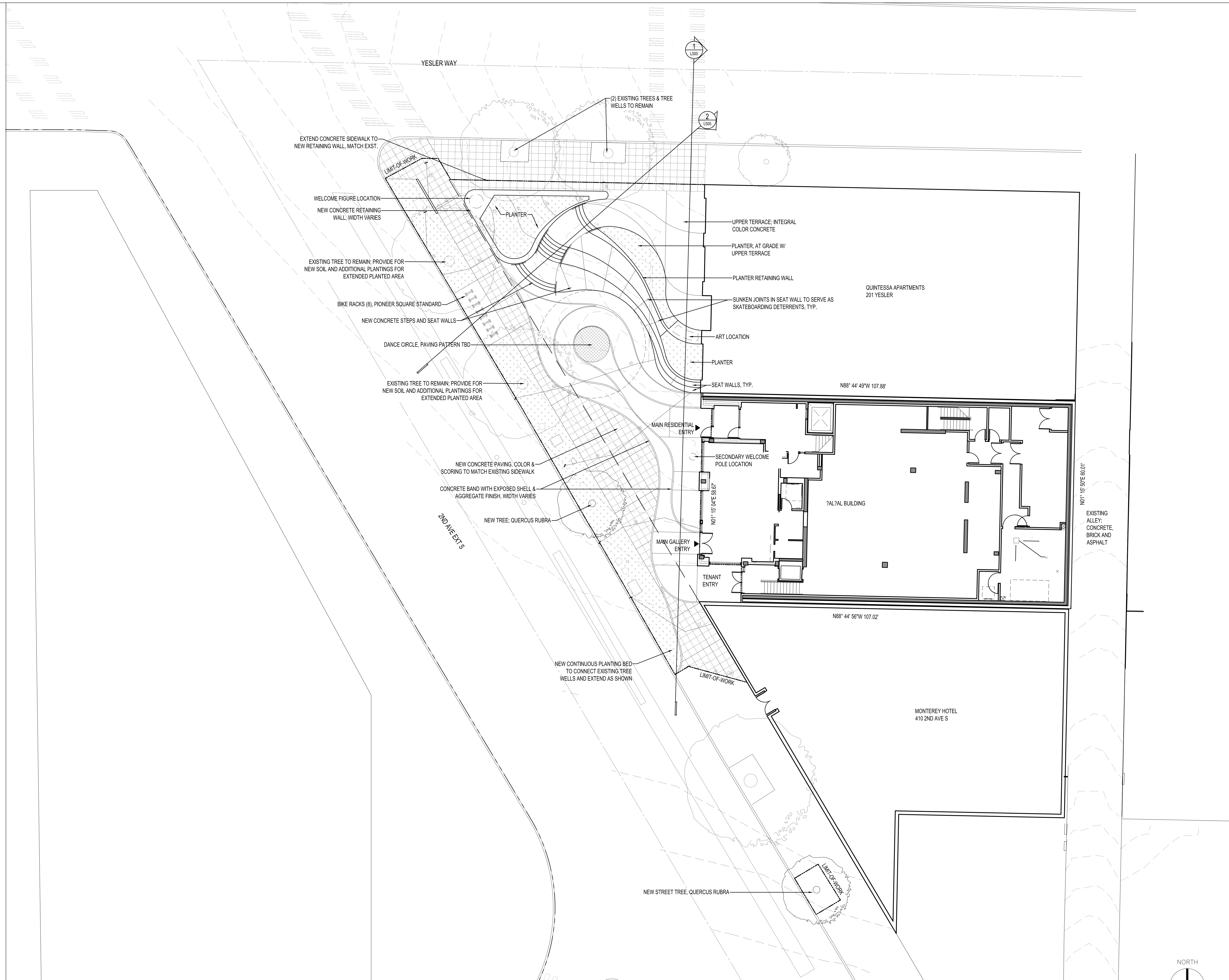
DRAWN BY: JLL

CHECKED BY: HLH

JOB NO.: 23006.009

SHEET NO.: **L100**

All drawings and material appearing herein are the original and unpublished work of the architect and may not be duplicated, used, or disclosed without the written consent of Jones & Jones.



1/6/2020 11:45 AM \\jonesandjones.com\jonesandjones\Projects\Fortson Square\23006.009\CD\CD\Arch27_Sheet_Skull_100_Site Reference Plan.dwg_4/3/2020 11:45 AM

FORTSON SQUARE REDESIGN



JONES JONES

ARCHITECTS
LANDSCAPE ARCHITECTS
PLANNERS
105 SOUTH MAIN STREET
SUITE 300
SEATTLE, WA 98104
206 424 5700
www.jonesandjones.com

SCHEMATIC DESIGN

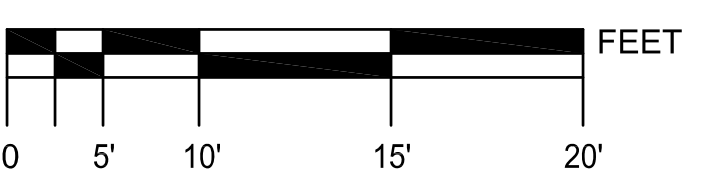
FORTSON SQUARE REDESIGN
108 2nd Ave Ext S
Seattle, WA 98104

DATE: 3 APRIL 2020

REVISIONS:

SITE GRADING PLAN

SCALE: 1" = 10'-0"



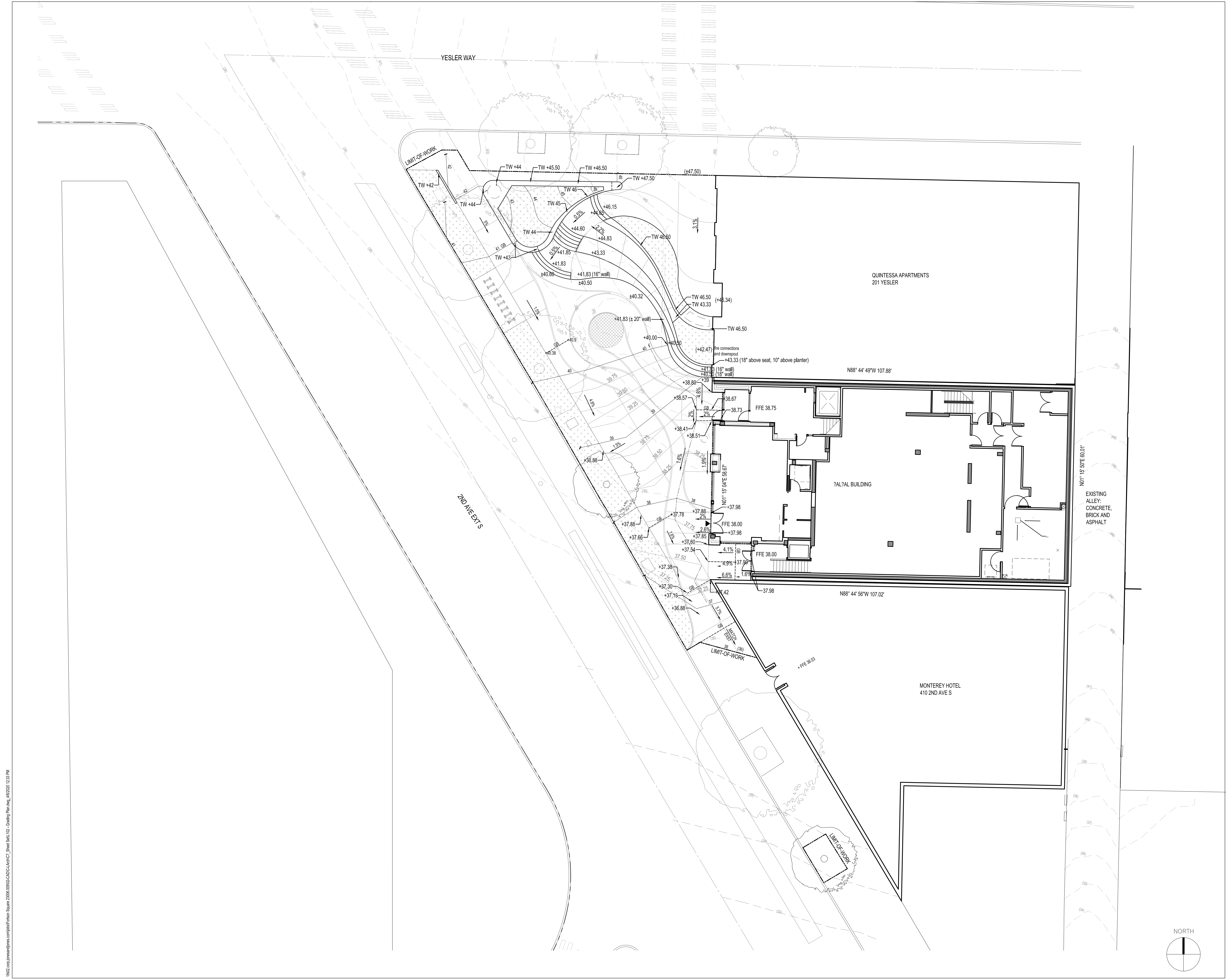
DRAWN BY: JLL

CHECKED BY: HLH

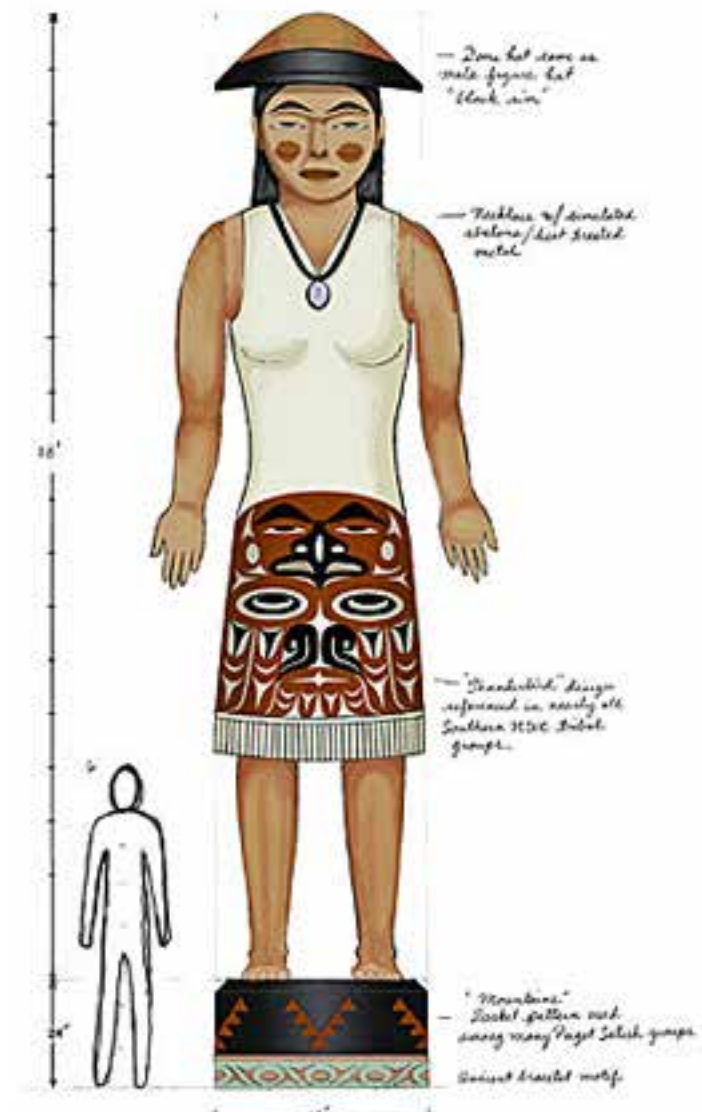
JOB NO.: 23006.009

SHEET NO.: **L102**

All drawings and material appearing herein are the original and unpublished work of the architect and may not be duplicated, used, or disclosed without the written consent of Jones & Jones.



\\s02.cas.jonesandjones.com\jll\p\fortson square 23006.009\02-CDD\Catch2_Sheet_Sk11_102_Grading_Plan.dwg_4/3/2020 12:33 PM



Welcome Pole Sketch by Shaun Peterson

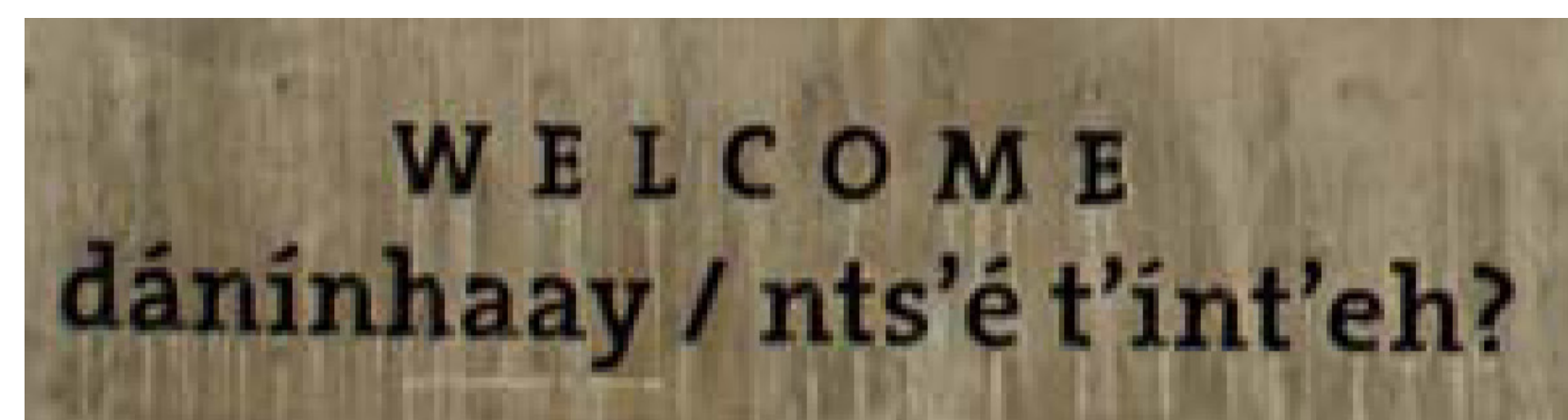
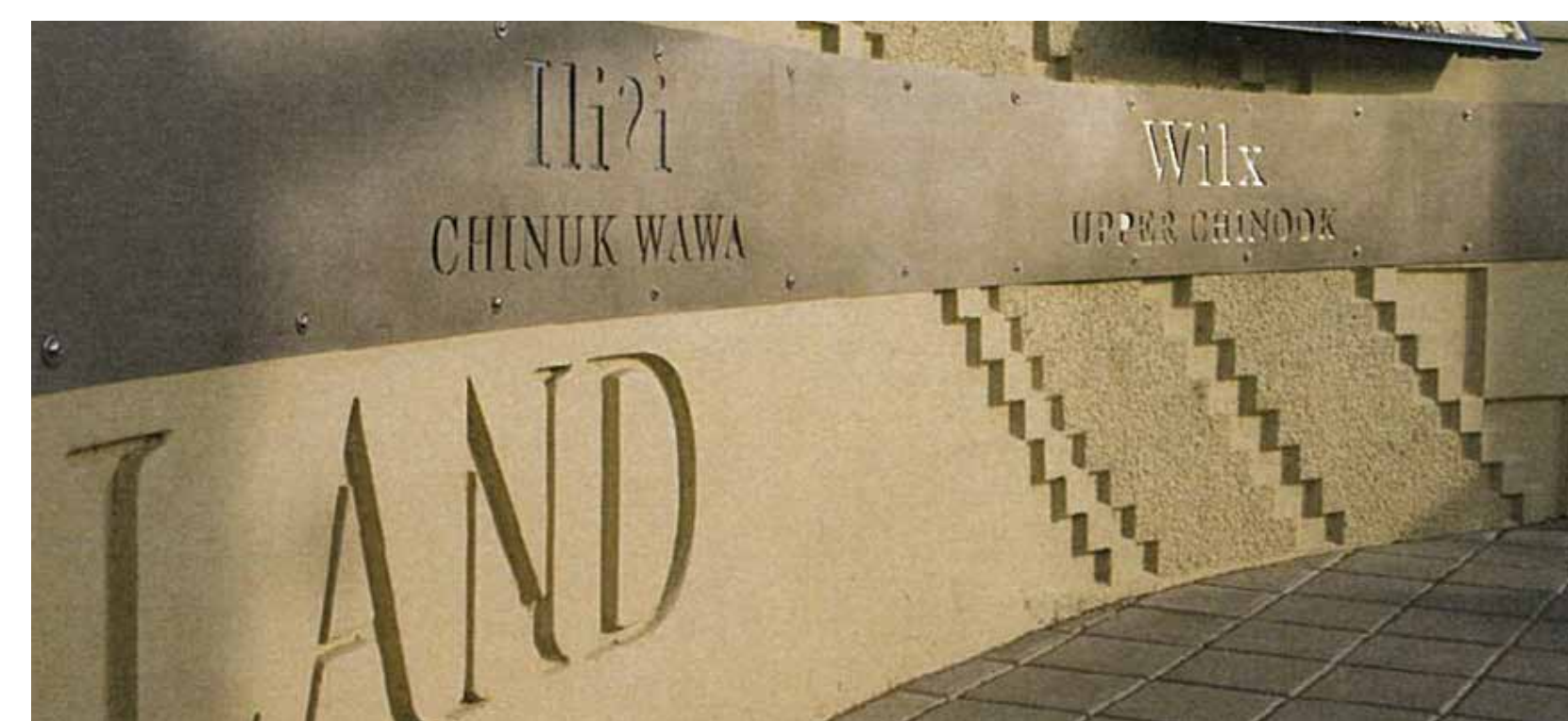


2 SPECIAL PAVING TREATMENT (EXAMPLE)
ARTWORK TBD (COORDINATED BY LA) AND INSTALLED AS PART OF PROJECT

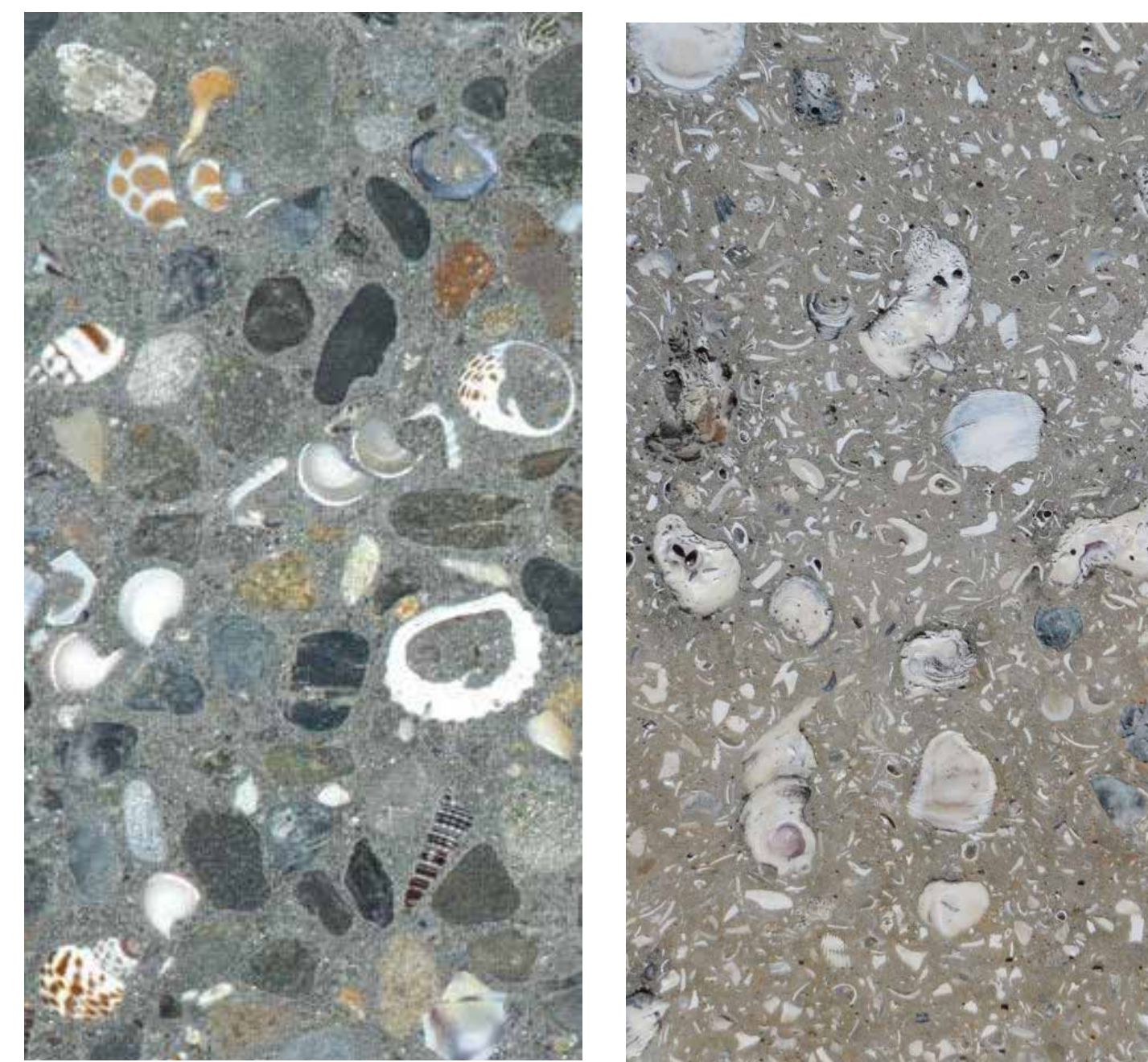
1 NEW WELCOME FIGURE (EXAMPLE)
ARTWORK TO BE COMMISSIONED AND OWNED BY CSC



3 TYPICAL CONCRETE (EXAMPLE)



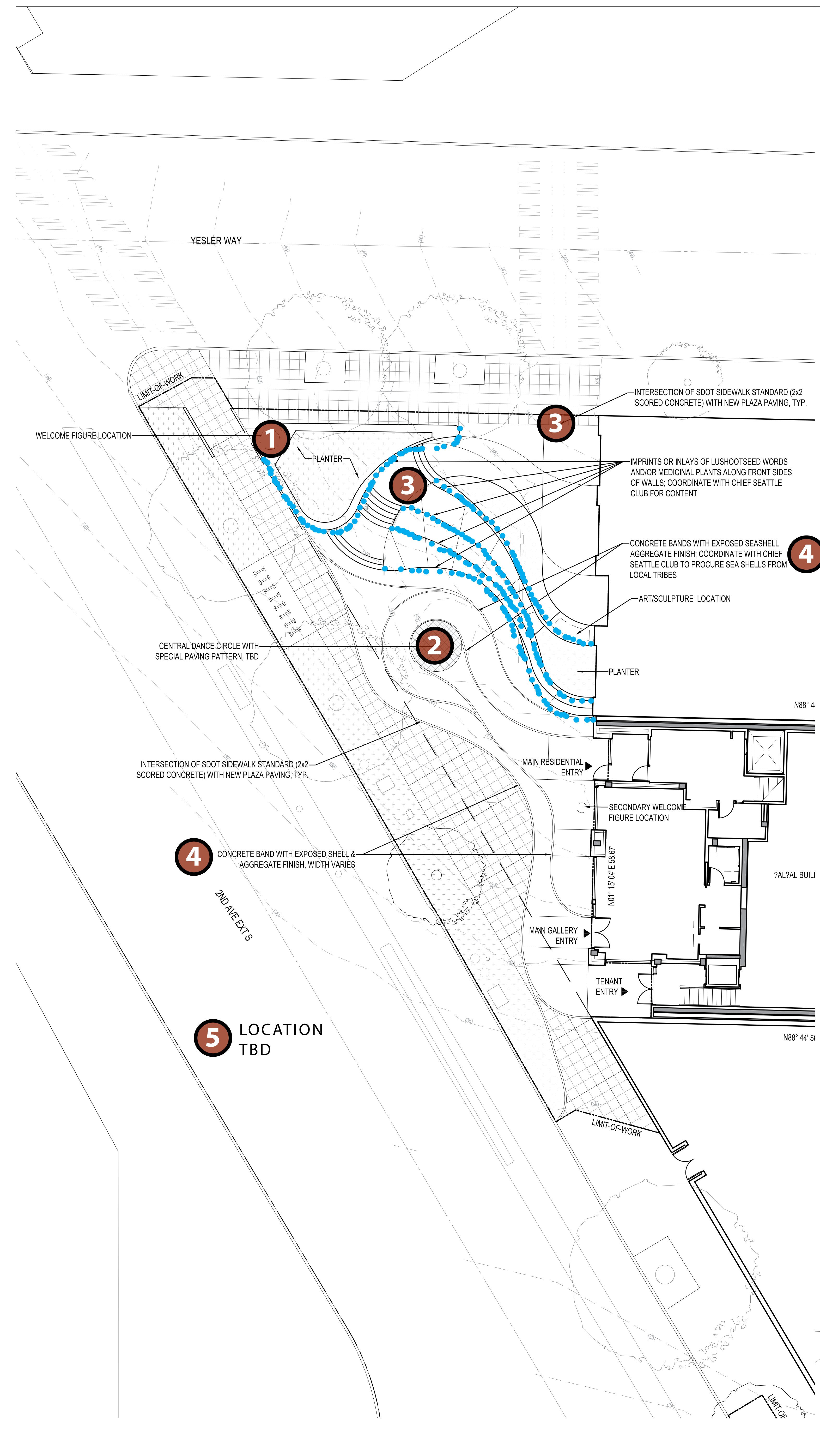
WALL TEXTURE - TEXT AND PATTERNS (TBD, EXAMPLE)
TEXT AND PATTERNS TBD (COORDINATED BY LA) AND INSTALLED AS PART OF PROJECT



4 SEASHELL AGGREGATE (EXAMPLES)



5 ARTWORK HONORING REMOVED TREES (EXAMPLE)
ARTIST TBD AND FINAL LOCATIONS TBD



FORTSON SQUARE REDESIGN



JONES JONES
ARCHITECTS
LANDSCAPE ARCHITECTS
PLANNERS
105 SOUTH MAIN STREET
SUITE 300
SEATTLE, WA 98104
206.424.5700
www.jonesandjones.com

SCHEMATIC DESIGN

FORTSON SQUARE REDESIGN
108 2nd Ave Ext S
Seattle, WA 98104

DATE: 3 APRIL 2020

REVISIONS:

ART PLACEMENT PLAN

SCALE: VARIES
0 5' 10' 15' 20' FEET

DRAWN BY: RFK/HLS
CHECKED BY: HLL/H
JOB NO.: 23006.009

SHEET NO.: L103

All drawings and material appearing herein are the original and unpublished work of the architect and may not be duplicated, used, or disclosed without the written consent of Jones & Jones.

FORTSON SQUARE REDESIGN



JONES JONES

ARCHITECTS
LANDSCAPE ARCHITECTS
PLANNERS
105 SOUTH MAIN STREET
SUITE 300
SEATTLE, WA 98104
206 424 5700
www.jonesandjones.com

SCHEMATIC DESIGN

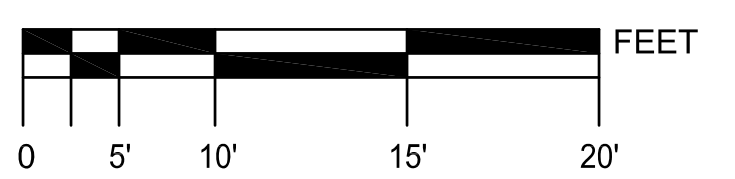
FORTSON SQUARE REDESIGN
108 2nd Ave Ext S
Seattle, WA 98104

DATE: 3 APRIL 2020

REVISIONS:

PLANTING PLAN

SCALE: 1" = 10'-0"



DRAWN BY: JLL

CHECKED BY: HLH

JOB NO.: 23006.009

SHEET NO.: **L106**

All drawings and material appearing herein are the original and unpublished work of the architect and may not be duplicated, used, or disclosed without the written consent of Jones & Jones.

TREE REMOVAL & REPLACEMENT STRATEGY

Common Name	Botanical Name	Count	Caliper
Removed Tree			
Red Oak	<i>Quercus rubra</i>	2	
Tree Replacement			
Vine Maple	<i>Acer circinatum</i>	4	2"
Red Oak	<i>Quercus rubra</i>	1	4"

PRELIMINARY PLANTING SCHEDULE

Common Name	Botanical Name	Height
Trees		
Vine maple	<i>Acer circinatum</i>	25
Pacific dogwood	<i>Cornus nuttallii</i>	30
Shrubs		
Red Osier Dogwood	<i>Cornus sericea</i>	15
Salal	<i>Gaultheria shallon</i>	5
Oceanspray	<i>Holodiscus discolor</i>	15
Tall Oregon grape	<i>Mahonia aquifolium</i>	8
Low Oregon grape	<i>Mahonia nervosa</i>	3
Indian plum/osoberry	<i>Oemleria cersiformis</i>	15
Evergreen huckleberry	<i>Caccinium ovatum</i>	6
Bald hip rose	<i>Rosa gymnocarpa</i>	4
Red elderberry	<i>Sambucus racemosa</i>	15
Snowberry	<i>Symphoricarpos albus</i>	5
Groundcovers		
Maidenhair fern	<i>Adiantum pedatum</i>	2
Western columbine	<i>Aquilegia formosa</i>	2
Deer fern	<i>Blechnum spicant</i>	2
Bleeding heart	<i>Dicentra formosa</i>	1.5
Oxalis/wood sorrel	<i>Oxalis oregana</i>	0.5
Sword fern	<i>Polystichum munitum</i>	3
Trillium	<i>Trillium ovatum</i>	1.5

1662.com/jonesandjones.com/Seattle/Fortson Square 23006.009/02-CDD-CAD/Arch/2_Sheet_SchL106_Planting Plan.dwg_4/8/2020 10:31 PM

