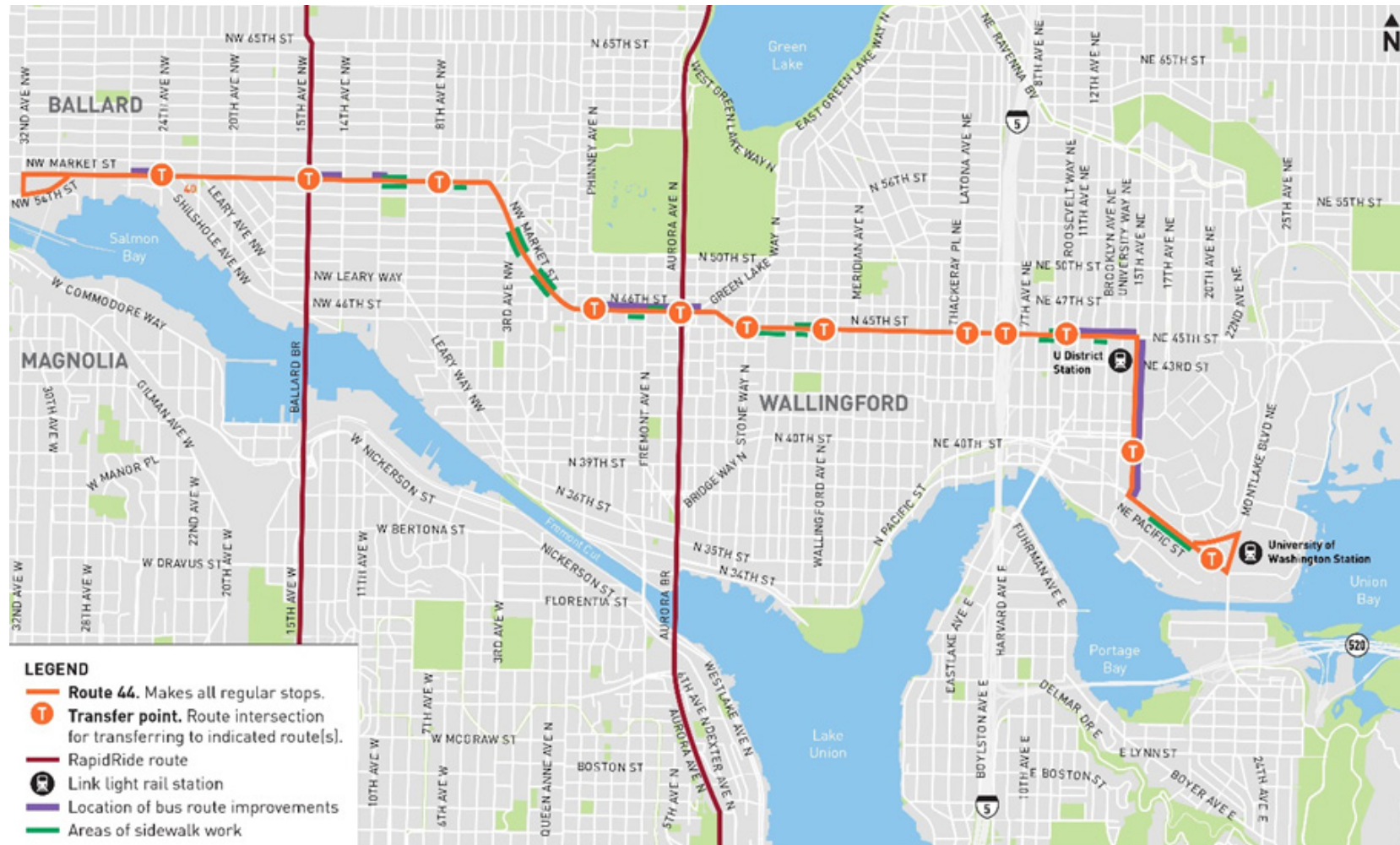


# Route 44 Transit-Plus Multimodal Corridor Improvements

## Project Outreach Summary

January 2022 –  
September 2023



## PROJECT OVERVIEW

In partnership with King County Metro, Seattle Department of Transportation (SDOT) has worked to improve transit reliability, reduce transit travel times, and enhance pedestrian safety and access along the Route 44 corridor. Improvements made as part of the Transit-Plus Multimodal Corridor project have included:

- Dedicated bus lanes: Business Access and Transit (BAT) lanes that separate buses from traffic and improve transit travel times and reliability while maintaining access to businesses
- Signal upgrades or optimization: Transit signal priority extends or activates green lights to reduce waiting times for buses at signals
- Channelization changes or turn restrictions: Changes to roadway channelization and limiting certain turns that can allow buses to move faster, avoid conflicts, and improve safety
- Safety improvements: Improvements to crossings and transit connections to help people get to bus stops more easily and safely
- Sidewalk upgrades: Repaved sidewalks and upgraded ADA-accessible curb ramps in key locations

## KEY TAKEAWAYS

The Route 44 TPMC project concluded in September of 2023. Throughout this project, SDOT crews have:

- Built (or replaced) 78 curb ramps to improve access to transportation and improve safety for people of all abilities
- Added 0.8 miles of bus-only lanes to improve transit reliability and reduce transit travel times
- Repaired 3,970 linear feet of sidewalk to improve access to transportation
- Repaired and replaced 27 crosswalks to improve access to buses and safety for people crossing roads
- Installed 3 new pedestrian signals

Below are descriptions of project improvements in the three project segments.



## BALLARD SEGMENT

### NW Market St and 11th and 14th Ave NW

At two locations along NW Market St – 11th and 14th Ave NW – crews made several signal improvements that provided safer access to transit for those walking and biking in the area. These updates include:

- Pedestrian crosswalk and pedestrian activated traffic signal at NW Market St and 11th Ave NW
- New curb ramps at NW Market St and 11th Ave NW
- Extended westbound double left-turn lane at NW Market St and 14th Ave NW
- Left-turn signal heads for eastbound and westbound traffic on NW Market St and 14th Ave NW



Crews performing work on NW Market St and 11th Ave NW





Crews performing work on N 46th St and Linden Ave N

## PHINNEY, FREMONT AND WALLINGFORD SEGMENT

### N 46th St and Aurora Ave N

Crews worked along N 46th St from Woodland Park Ave N to Aurora Ave N to improve safety for all travelers, increase pedestrian access, and streamline travel for buses through traffic.

The changes at the Aurora Ave N on and off-ramps provided several improvements over the previous configuration, which has elements that date back to the original grade-separation of Aurora that was designed in 1933.

The key features of the project near Linden Ave N are:

- A new full traffic signal on N 46th St and Linden Ave N/Phinney Way N. This signal provides benefits over the prior condition, including:
  - o Protected-only left turns from westbound N 46th St to Phinney Way N. Protected-only left turns have been shown to have lower crash rates, but they can cause longer queue lengths, so moving the ramp farther west for left turning vehicles will reduce the likelihood of queuing extending back to Green Lake Way N.
  - o A new signalized and marked pedestrian crossing across N 46th St at Linden Ave N.
  - o Signalized control of northbound Linden Ave N to reduce conflicts with the westbound left turns at Phinney Way N and with the new crosswalk.
- Consolidation of eastbound bus stops to a new single stop at Phinney Way N and relocation of the westbound stop. The recently closed eastbound bus stops were only about 700 ft apart, about twice as close as the quarter mile spacing that is recommended by King County Metro's bus stop spacing guidelines. Moving the westbound stop from Fremont Ave N to Linden Ave N allows the stop pair to be together and reduces the walking distance for transfers between Route 44 and the E Line.

## N 46th St and Green Lake Way N

At Green Lake Way N, the project has:

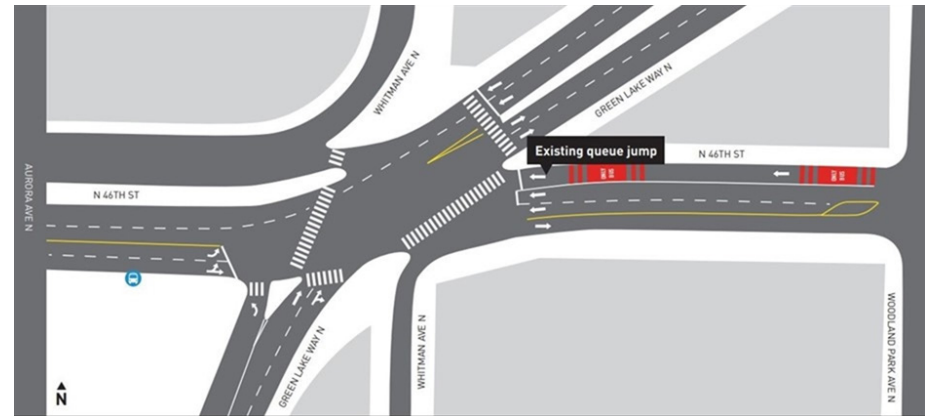
- Shortened the length of three crosswalks - the two crossing N 46th St and the southeast crossing of Green Lake Way N
- Adjusted the channelization and signal phasing to increase eastbound green-light time for the Route 44 through this intersection. This also includes a longer Walk indication for pedestrians in the south crosswalks across Green Lake Way N.

Throughout the segment from Fremont Ave N to Green Lake Way N, pedestrians have gained upgraded curb ramps, improved pedestrian lighting, longer Walk indications at signals, and reduced vehicle/pedestrian conflicts.

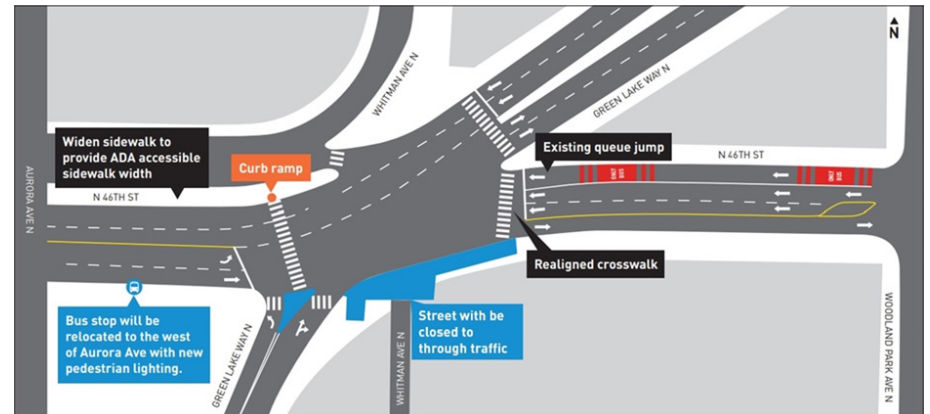


Work underway at N 46th St and Green Lake Way N

## BEFORE



## AFTER





## U-DISTRICT SEGMENT

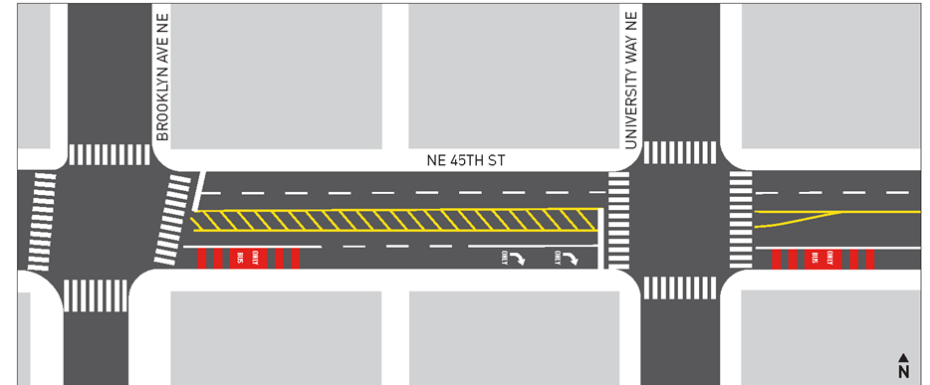
### NE 45th St between Brooklyn Ave NE and University Way NE

Crews installed a bus bulb on the southside of NE 45th St between Brooklyn Ave NE and University Way NE. With the installation of this bus bulb, the Route 44 TPMC buses are now able to move faster and more reliably by decreasing the amount of time lost when merging in and out of traffic.

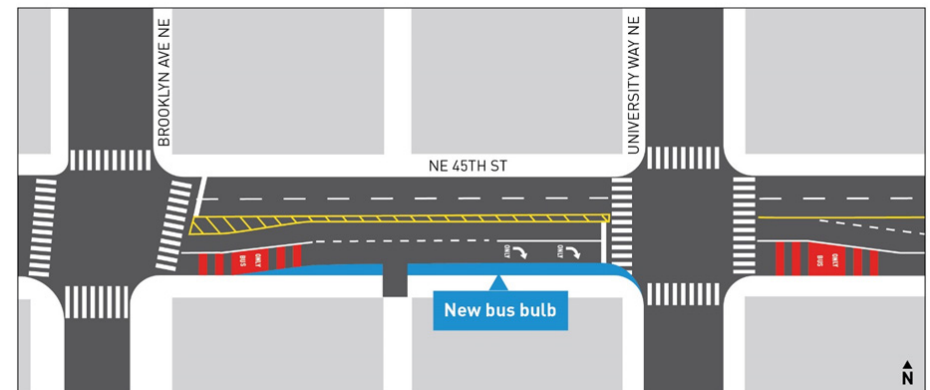


Bus bulb work on NE 45th St between Brooklyn Ave N and University Way NE

### BEFORE



### AFTER



## NE 45th St and 8th Ave NE

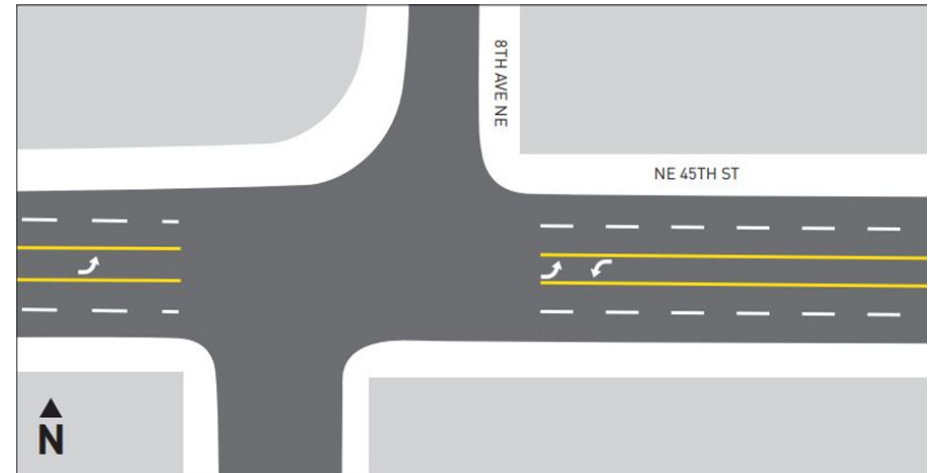
At NE 45th St and 8th Ave NE crews made several improvements to provide safer passage for those walking across NE 45th St. This location now includes:

- A pedestrian crosswalk at NE 45th St
- An additional traffic signal at NE 45th St
- A concrete island on NE 45th that restricts left turns for all legs of the 8th Ave NE intersection
- A reconstructed NW corner of NE 45th St and 8th Ave NE that provides curbspace for the new crosswalk
- New curb ramps

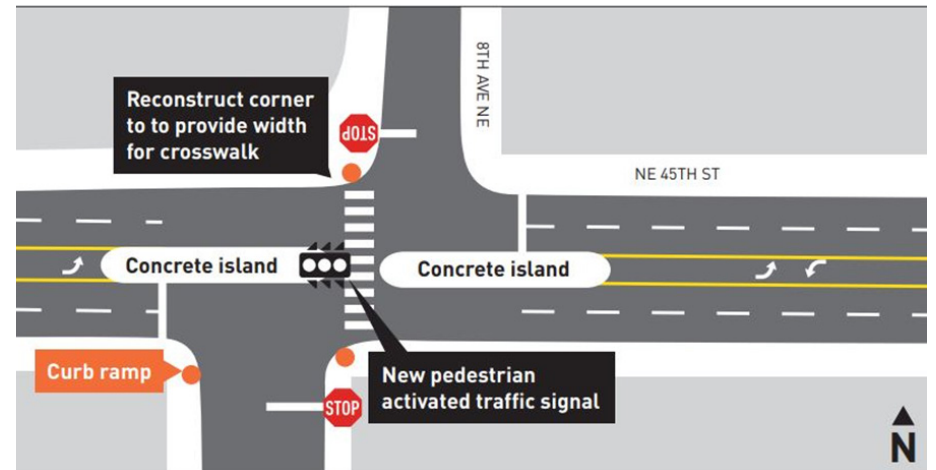


Crews performing work on NE 45th St and 8th Ave NE

### BEFORE



### AFTER

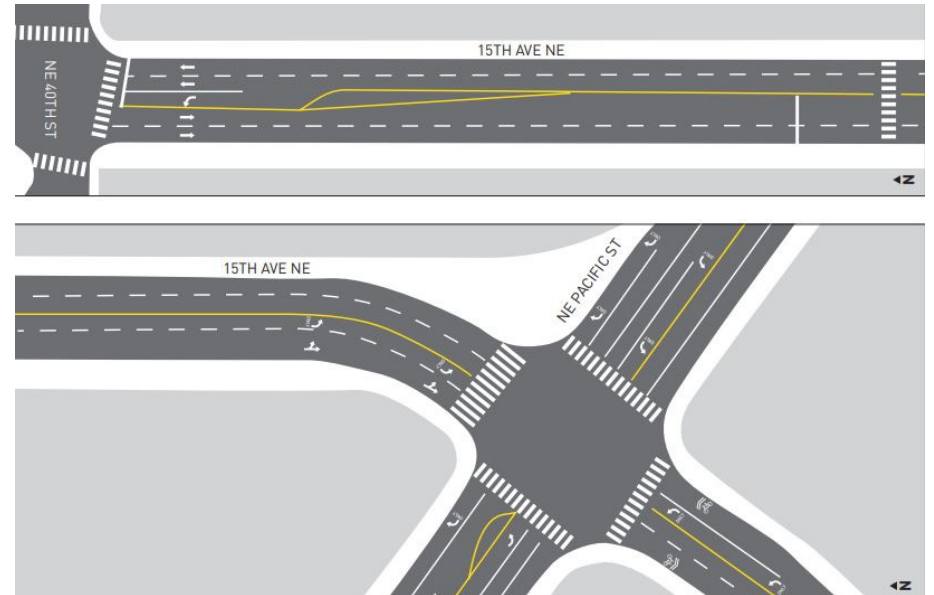


### NE 45th St and 8th Ave NE

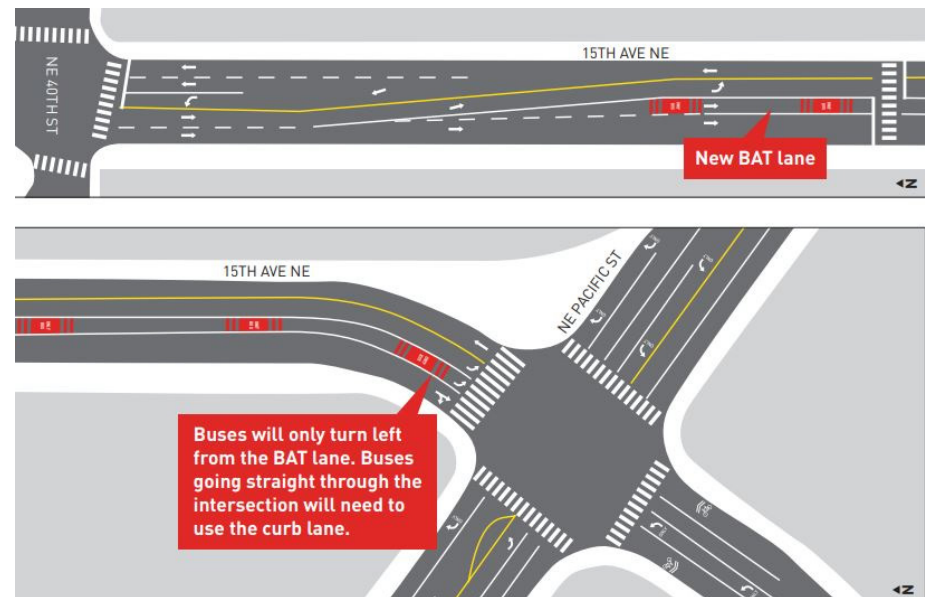
At NE Pacific St and 15th Ave NE, crews made several changes in order to provide faster, more reliable transit service for buses that travel along the Route 44 TPMC. These changes include:

- Addition of a bus only lane southbound from NE 40th St to NE Pacific St
- Reduction of 15th Ave NE northbound from 2 lanes to 1 lane north of NE Pacific St

### BEFORE



### AFTER





## PUBLIC OUTREACH

Throughout the Route 44 TPMC project, SDOT prioritized community outreach to minimize impacts during construction. As of September 2023, we have sent more than 50 email updates via our project listserv, posted more than 50 web updates, responded to over 200 email and phone inquiries, posted flyers in the project area more than 20 times, had 15 field meetings with contractors, and met with more than 30 businesses. SDOT also utilized the following methods to keep community informed and to minimize construction impacts, gain loading and access needs, and ensure safety:

- Ongoing outreach and coordination with local businesses, schools, community groups, and local media outlets – such as the U-District Partnership, University of Washington hospitals, and My Ballard blog
- Ongoing monitoring and responses to inquiries via the project email inbox
- Weekly website updates with the most recent construction information and impacts
- On-the-ground and door-to-door outreach to residents and businesses in Wallingford, the U-District, and Ballard.
  - Distribution of project flyers and posters to alert local community of upcoming impacts
- Ongoing coordination with King County Metro to relocate bus stops during construction and send out impact notifications to riders

## OUTREACH EXAMPLES

### Project A-Frame



Project A-frame on N 46th St and Linden Ave N

### Project Flyer



Project flyer placed at 4517 Fremont Ave N

### Project Mural



Crews cleaning the mural on N 46th St

## Website Updates

**Route 44 - Transit-Plus Multimodal Corridor**

Updated: August 4, 2023

Improving transit travel times and safety

---

**What's happening now?**

The Route 44 Transit-Plus Multimodal Corridor project is almost finished! In the coming weeks, we will be wrapping up work at the following locations:

- NE 45th St between Brooklyn Ave NE and University Way NE
- NE 45th St and 8th Ave NE
- N 46th between Phinney Ave N and Linden Ave N
- NW Market St and 11th and 14th avenues NW

Thank you for your patience as we have worked to make improvements to the Route 44 corridor.

**NE Pacific St and 15th Ave NE**

This Saturday, August 5, crews will be at NE Pacific St and 15th Ave NE preparing for overhead wiring work. UPOs will be onsite to guide traffic. This work is expected to be finished the same day.

**N 46th St between Phinney Ave N and Linden Ave N**


Starting as early as Monday, August 7, crews will begin installing a curb island on N 46th St between Phinney Ave N and Linden Ave N. Traffic will be shifted to the outside lanes during this work. The curb island is expected to be finished within a week.

**NW Market St and 11th and 14th avenues NW**


As early as Saturday, August 26, crews will return to two locations on NW Market St for signal work. Work at both NW Market St and 11th and 14th avenues NW will conclude within a day.

Route 44 website update example

## Email Update


 **Seattle Department of Transportation**

---



**Route 44**    **Route 44**

**Transit-Plus Multimodal Corridor**



Hello neighbors,

The Route 44 Transit-Plus Multimodal Corridor project is almost finished! In the coming weeks, we will be wrapping up work at the following locations:

- NE Pacific St and 15th Ave NE
- N 46th between Phinney Ave N and Linden Ave N
- NW Market St and 11th and 14th avenues NW
- NE 45th St between Brooklyn Ave NE and University Way NE

Thank you for your patience as we have worked to make improvements to the Route 44 corridor.

Route 44 email update example