



Route 40



Route 40 Transit-Plus Multimodal Corridor Project

Project Overview & Upcoming Construction
January 7, 2025

How to participate in this webinar



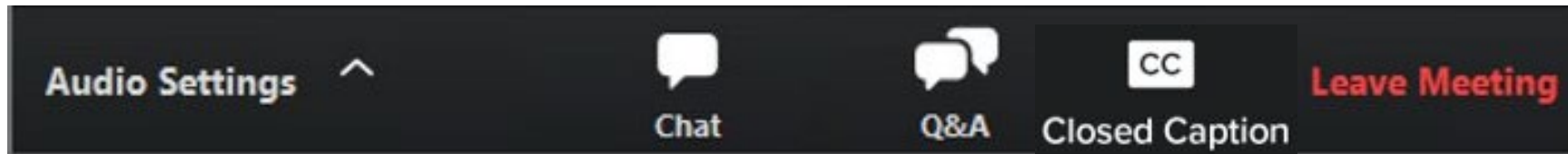
Route 40



All attendees are muted.
To adjust your audio settings during the meeting, click on **Audio Settings**.



Please use the Q&A window to ask questions or offer comments.



CHAT is disabled during the presentation. Please communicate with the team through the **Q&A window**.



Turn on **closed captions** if you want to view captions during the meeting. They are available in English only.



Overview



Route 40



1. Welcome
2. Project Overview
3. Construction Updates
4. Construction Impacts
5. Office of Economic Development
6. Q&A



Project Team



Route 40



- **Jules Posadas** - SDOT, Public Engagement Lead
- **Colleen Woods** - SDOT, Project Manager
- **Brianna Palmer** - Jacobs, Construction Resident Engineer
- **Joseph Rye** - King County Metro, Capital Projects Manager
- **Lluvia Ellison-Morales** - King County Metro, Senior Community Engagement Manager
- **Phillip Sit** - Office of Economic Development, Director of Small Business Navigation
- **Gavin Patterson** - Seattle Public Utilities, Project Manager

About Route 40: Transit Plus Multimodal Corridor Project (TPMC)



Route 40



Route 40 Improvements Include:



6,000+

Feet of upgraded sidewalks



200

Feet of new water mains



47

Upgraded curb ramps



8

Upgraded bus stop zones



3

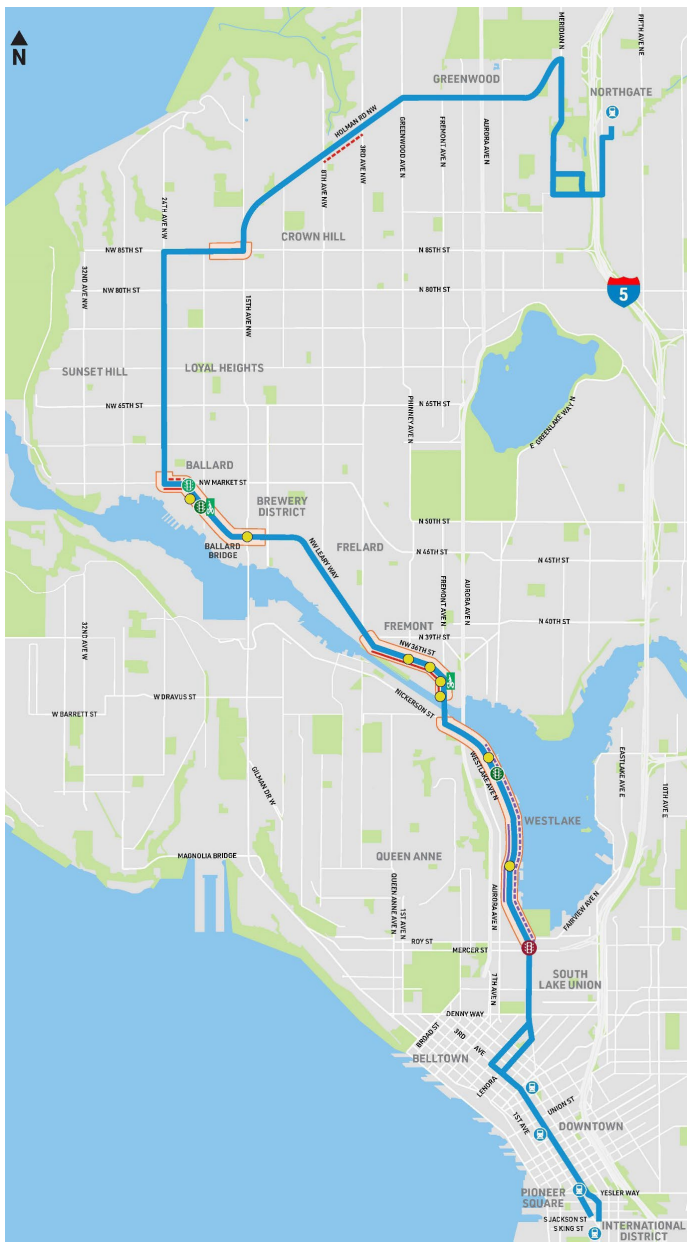
Miles of Businesses Access
and Transit only lanes or
Freight and Bus only lanes



3

New or upgraded crosswalks

- 5-10% transit travel time savings, and approximately 14-17% Ballard to Downtown
- Upgraded infrastructure
- Safer sidewalks and crossings
- Transit trips faster and more reliable, now and in the future
- Make it safer and easier to access transit
- Respond to community needs and priorities
- Freight and bus improvements



Route 40 Improvements

- 3 total miles of BAT or FAB lanes
- 5-10% transit travel time reductions
- 47 upgraded curb ramps
- 8 new bus bulbs
- 6,000+ feet of upgraded sidewalks
- 3 new or upgraded crosswalks

LEGEND

- Route 40. Makes all regular stops.
- Northbound Freight-and-Bus (FAB) Only Lanes
- Southbound Freight-and-Bus Only Lanes
- Northbound Business Access and Transit (BAT) Lanes
- Southbound Business Access and Transit Lanes
- Street improvements (striping and some street repairs)
- Existing bus priority signal
- New bus priority signal
- Curb ramp upgrades
- New signalized crosswalk
- Upgraded signalized crosswalk
- New bike connections



Route 40



Corridor Overview

Ridership



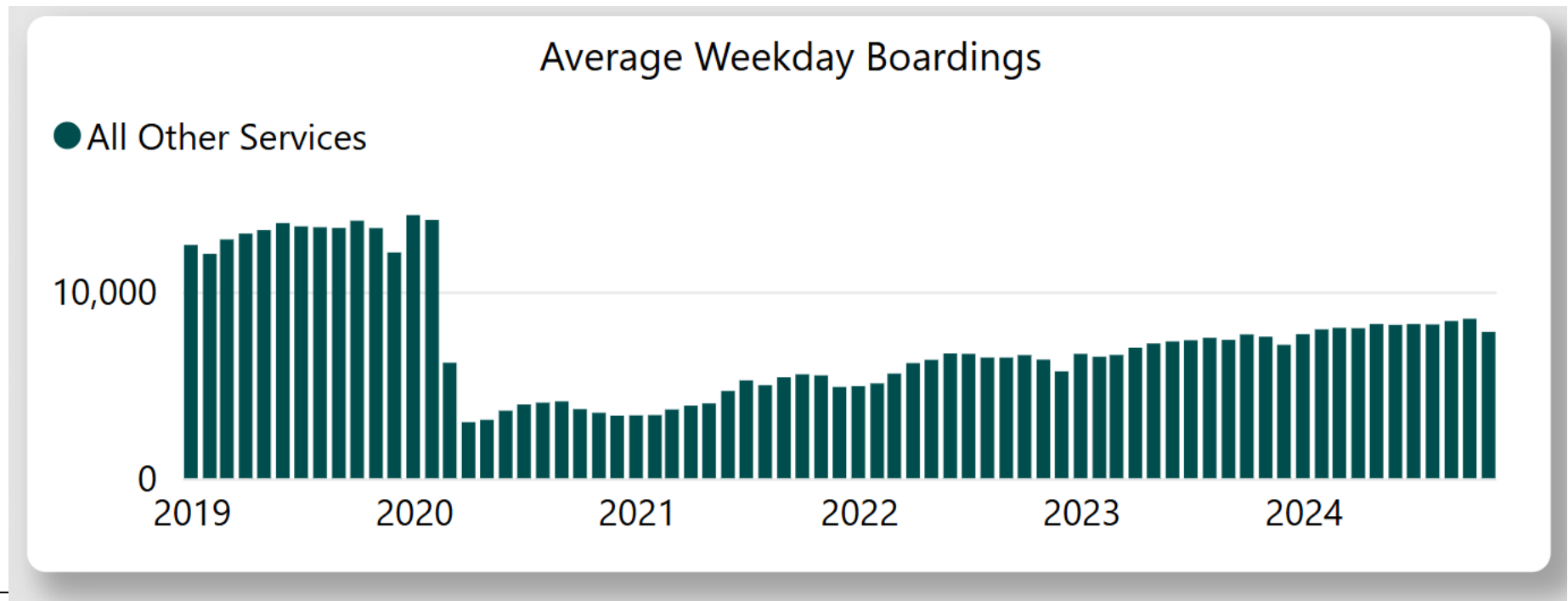
Route 40



Ridership data is available publicly via Metro's Rider Dashboard



- Fifth (5th) highest ridership route in the Metro network
- Over 8,500 average weekday daily boardings (Fall 2024) — an 11% increase from Fall 2023



Fremont and Westlake- Design and Construction Updates





Route 40



Fremont – Westlake Project Area

About TPMC – Design elements





Route 40

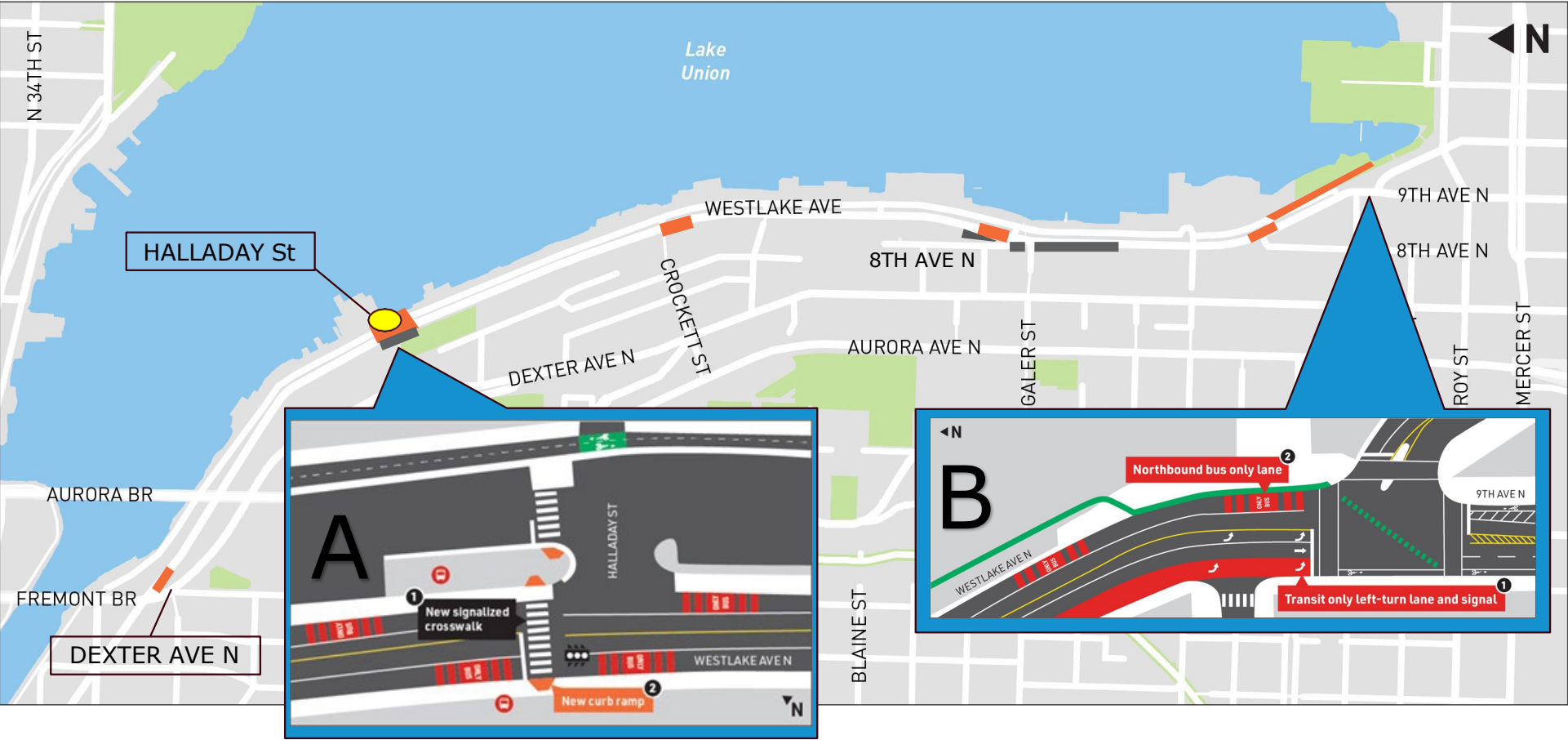





Westlake Construction Area



Route 40

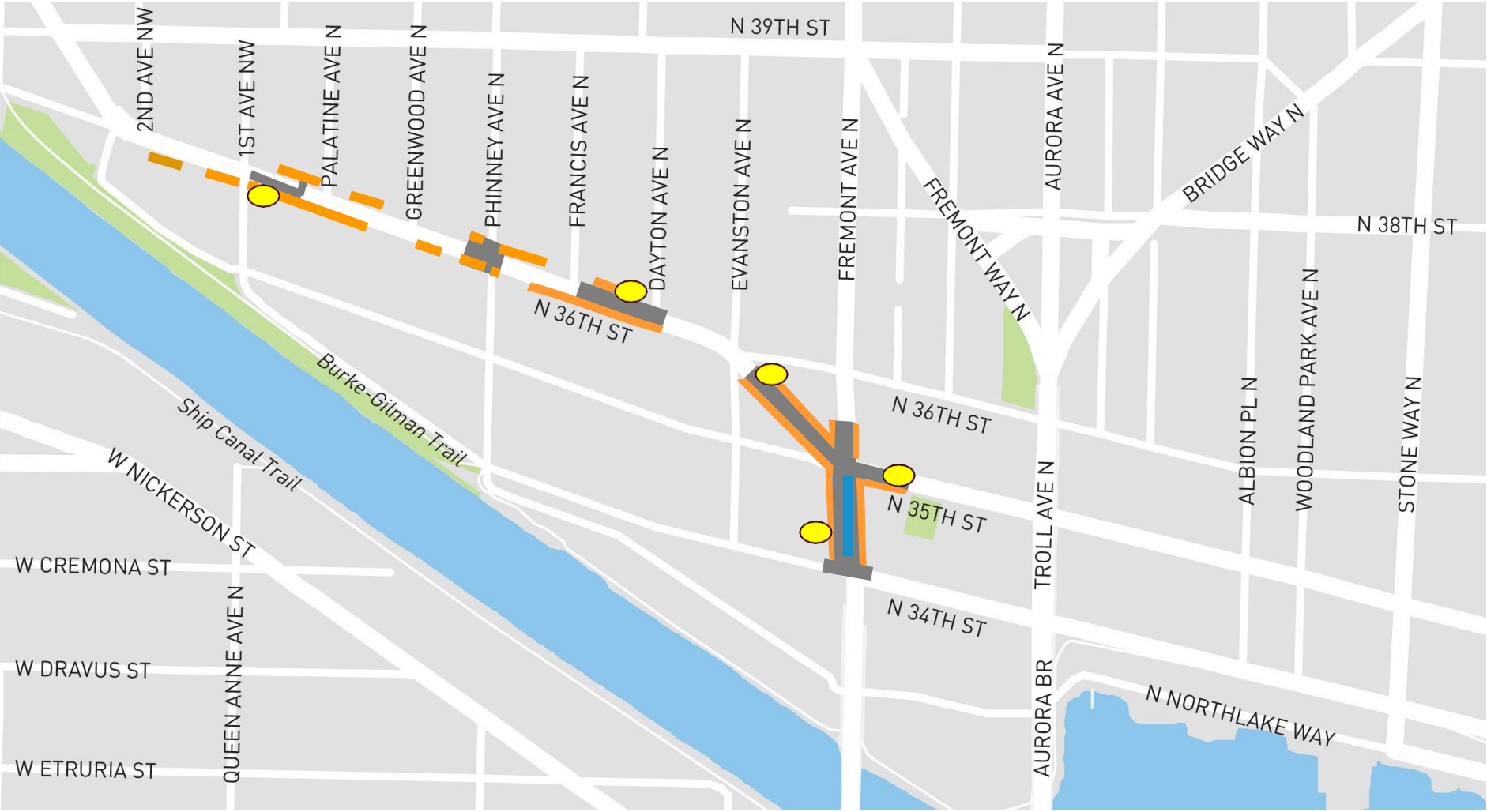


- Legend:**
-  New bus stop
 -  Street and Utilities Upgrades
 -  Sidewalks and curb ramps

Fremont Construction Area



Route 40



Legend:

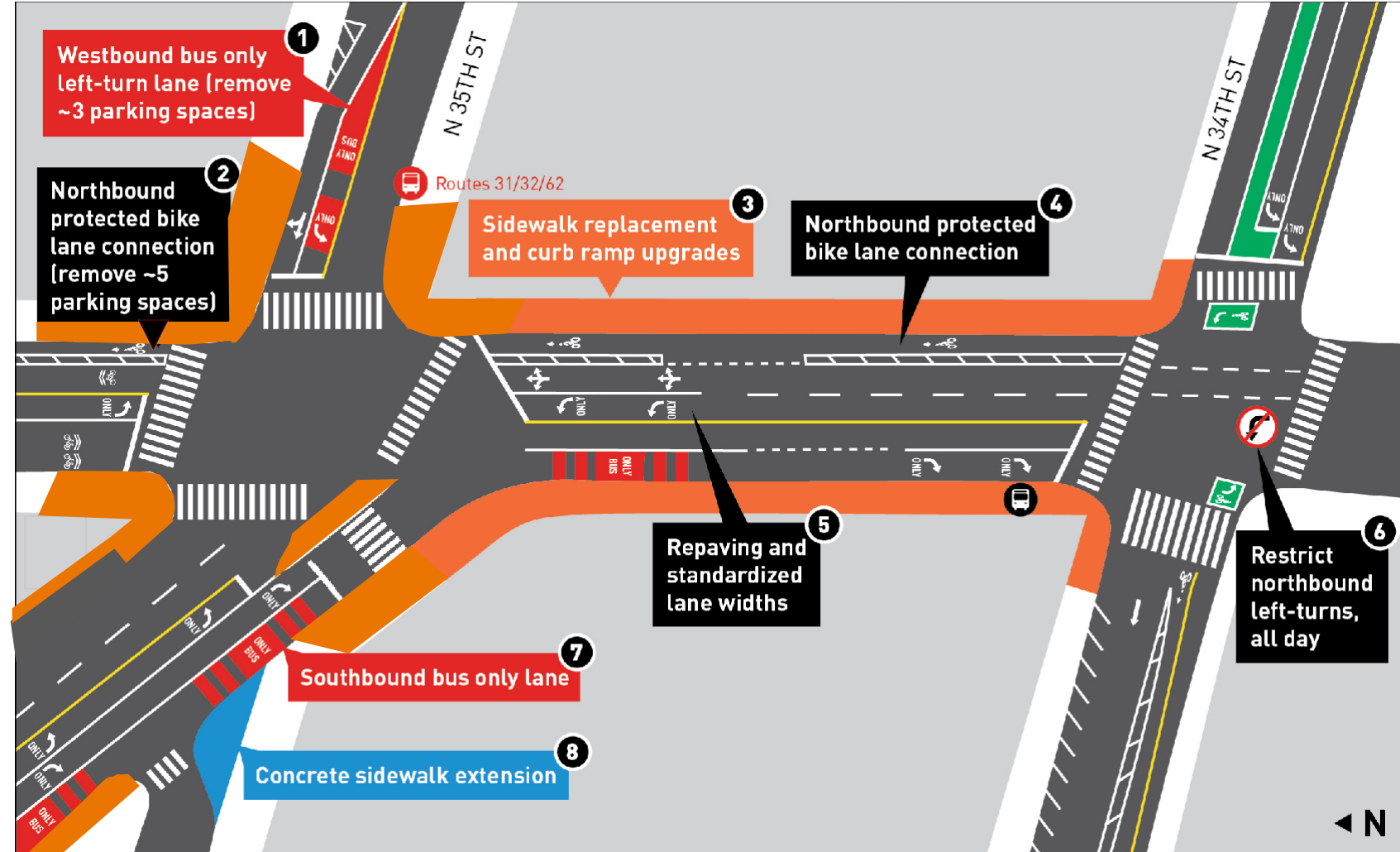
- New/upgraded bus stops
- Street and Utilities Upgrades
- Sidewalks and curb ramps upgrades
- Watermain

between N 34th St and N 35th St



- Install new dedicated Route 40 bus stop on next to the Lenin statue
- Install new bus stop for routes 31/32 and 62 on N 35th St
- Remove existing northbound bus stop between N 34th St and N 35th St
- Install a new northbound protected bike lane beginning at N 34th St continuing past N 35th St
- Repaving the street between N 34th to N 35th, and along Fremont Pl
- Updating sidewalks and curb ramps

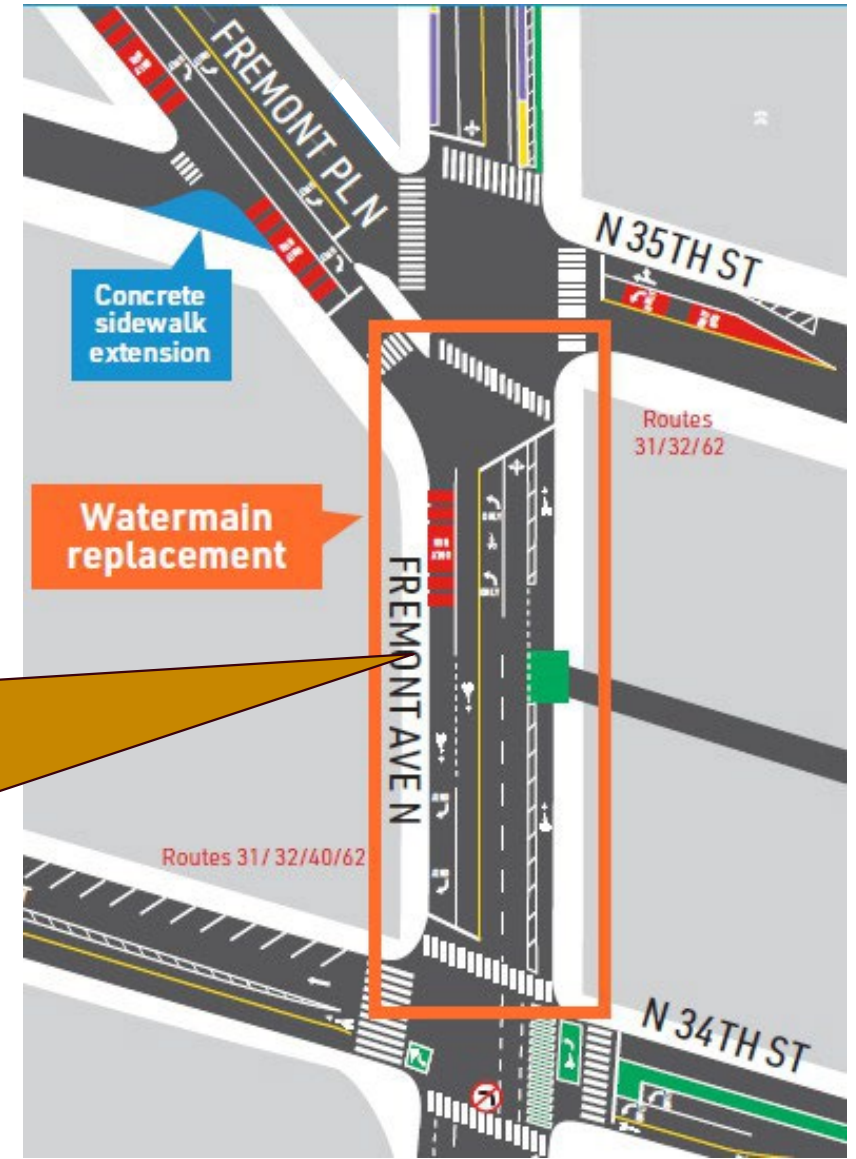
- Reduced transit travel times for multiple bus routes
- Improves safety for people biking north on Fremont Ave N
- Smoother travel and updated infrastructure



Watermain Upgrade

Fremont Ave N between N 34th St and N 35th St

The Seattle Department of Transportation is working with Seattle Public Utilities to replace a 100-year-old waterline under Fremont Ave N between N 34th St and N 35th St (a block north of the Fremont Bridge).



What to Expect During Construction



Sidewalks & Curb Ramps

Sidewalk construction can include:

- Pedestrian detours
- Demolition of existing sidewalk
- Trenching to upgrade underground utilities
- Extending out the sidewalk and curb where the design calls for it
- Closing one half of the sidewalk for construction and keeping the other side open
- Temporary parking removal
- Temporary frontage access impacts
- Temporary driveway impacts
- Forming and pouring concrete



Route 40



Street Maintenance: Full Street Panel Upgrades and New Asphalt



Route 40



Full Depth Street Upgrades:

- Detouring vehicles, transit, and pedestrians
- Temporary lane closures including on-street parking.
- Demoing the street down to the dirt
- Pouring in crushed rock and compacting it
- Pouring in concrete or placing and compacting asphalt



Mill and Overlay:

- Mill asphalt down 2 inches, place and compact. Usually dependent on dry weather and warmer temperatures
- Install new striping

New Bus Zones



Route 40



Bus zone construction can include:

- Demolition of existing sidewalk and street pavement
- Temporary parking removal for construction access
- Detouring vehicles, transit, and pedestrians
- Trenching to upgrade underground utilities and storm water drainage
- Extending out the sidewalk where the design calls for it. Sometimes this is referred to as "bus bulb out"
 - Bulb outs allow buses to load and unload transit riders faster because buses don't have to pull up to the sidewalk
- Forming and pouring concrete
- Typically, we also need to install a new street panel on the road in front of the bus zone to ensure that it can maintain the constant heavy loads of the bus stopping and going.



Trenching

Trenching is typically used to install utilities across an area of the street and/or sidewalk. This includes running electrical conduit, storm water drainage pipes, or main water lines.

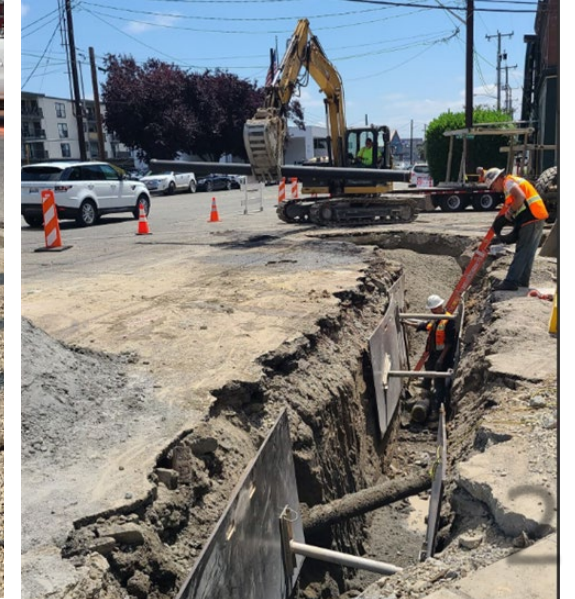
The process for trenching and the impacts of it are dependent on what utilities are needed and where they're connecting.

Impacts:

- Lane restrictions
- Parking restrictions
- Detouring vehicles, transit, and pedestrians
- Flagger to direct traffic
- Temporary metal plate to cover the trench
- Temporary water shut-offs
- Pedestrian crossings closed or moved
- Sometimes additional utility work is discovered that requires maintenance and might extend the construction timeline



Route 40



General Construction Impacts



Route 40



- Lane reductions
- Driveway closures
- Bus stop closures
- Parking restrictions
- Sidewalk detours
- Storage of construction supplies in the street
- Noise, dust, and vibrations
- Bus stop relocations

Typical Construction Times:

- Monday-Friday
- Select Weekends
- 7 AM-4PM
- Select Evenings

Construction is scheduled to continue throughout 2025.

To learn more about what to expect during construction, visit:

seattle.gov/transportation/route40

Upcoming Project Timeline

Winter 2025

- Confirm utilities
- Roadway demolition and stormwater mitigation
- Begin water main replacement

Spring/Summer 2025

- Complete water main replacement
- Conduit work
- Begin curb ramps/sidewalks
- Begin station construction
- Begin roadway subsurface work
- Pole foundations
- Overhead bus power

Autumn 2025

- Complete stations
- Landscaping
- Lighting
- Signal installation
- Final roadway pavement
- Final lane markings



Project Coordination



Route 40



Our project team is in close coordination with the following projects:

- 15th Ave W/NW and Ballard Bridge Paving and Safety Project (SDOT)
- Ship Canal Water Quality Project (SPU)
- RapidRide J Line (SDOT)
- WSDOT Revive I-5 (WSDOT)
- "Missing Link" Bike Route Study on NW Market St - Leary Ave NW - 17th Ave NW (SDOT)
- N 102nd St/Aurora Ave N Pedestrian Bridge (SDOT)
- 13th Ave NW/Holman Rd NW Pedestrian Bridge Seismic Retrofit (SDOT)

Transportation Options Resources

Understand your options and consider alternative ways of getting around to save money, reduce congestion, and support healthier travel for all

Nearby employers

Offer your staff the benefits of unlimited access via **ORCA Business Passport**—which covers buses, light rail, commuter trains, streetcar, vanpool, and more.

Employers with 5 or more employees can purchase this annual, unlimited transit pass program. Transit passes are also a tax-free benefit!

Learn more at:
commuteseattle.com/orca-for-business/

People traveling in the area

The City of Seattle's **Flip Your Trip** is your resource for how to get around the city without driving alone.

Trip planning resources, information about how to use our different bike and transit networks, and more are at your fingertips with Flip Your Trip.

Learn more at:
flipyourtrip.org



Route 40



Office of Economic Development



Office of Economic Development

Small Business Navigation

“Frontline” responders to any small business inquiries for day-to-day needs and general City navigation.

Capacity Building

Leads neighborhood-level strategic investments to various community organizations and business improvement areas (BIAs).

Community Wealth Building

Invests in place-based initiatives that secure generational wealth and community ownership for businesses owners.

Key Industries and Workforce Development

Grows leading industry sectors in arts, maritime, manufacturing, technology, life sciences, health services, and construction.

Special Events and Film Program

Supports equitable opportunity for local creatives in film, music, and related industries, and coordinates permits for events and film city-wide.

These three teams hold most business support services and programs

Consulting Services

[Accounting and Business Consulting \(ABC\)](#)

- Up to 10 hours of FREE one-on-one sessions around the following topics: Accounting and Bookkeeping, Marketing and Branding, and Business Development.

[Commercial Space Permit Coaching and Expedited Services with SDCI](#)

- FREE 20-minute coaching session to research current permit information and develop strategies to reduce timelines for plan review.

[Commercial Space Consultants](#)

- Up to 10 hours of FREE consultation for the following services: Advocacy with landlords and/or general contractors, development budget preparation, kitchen operations, and locating a commercial space for your business.

[Small Business Legal Assistance](#)

- FREE individual counseling and access to legal clinics and business specific legal reference materials on commercial leasing and landlord/tenant issues.

Business Development Program

Capital Access Program in collaboration with Community Development Financial Institutions (CDFIs)

- Borrow up to \$250,000 with interest to use on business expenses such as payroll, rent, and utilities through the Flex Fund Loan. Additional resources include financial counseling, technical assistance, and connection to community-based resources.

Tenant Improvement Program

- Apply for technical assistance or direct cash funds for tenant improvement services that include pre-leasing and design (Emerge Track), equipment costs (Improve Track), and new construction (Expand Track).

Digital Sales Access Program in collaboration with Kay Tita <http://www.kaytita.org/dsap/seattle>

- Provides participating businesses a free point of sale (POS) system as well as connecting businesses with tools and training needed to grow their business with the new technology.

Youth 2 Business Program Y2B Web Impact Program - Kay Tita

- Receive a free website that is developed and designed by students from Franklin High School.

The City of Seattle encourages everyone to participate in its programs and activities. For additional questions, translation or interpretation, technical assistance, disability accommodations, materials in alternate formats, or accessibility information, please contact the Office of Economic Development at (206) 684-8090 or oed@seattle.gov.



Route 40



Comments/Questions?

Route40@seattle.gov

www.seattle.gov/transportation/route40