



Madison Line



February 2022

Block closure for the Madison – RapidRide G Line project E Pine St between 15th and 16th closed as early as February 28

Beginning as early as Monday, February 28, crews will begin major storm drain work between 15th and 16th avenues on E Pine St as part of the Madison – RapidRide G Line project. The work requires digging into the street approximately 24 feet deep into the ground to install a new storm drain and will last approximately 6-8 weeks.

Street and sidewalk access

- Driving restrictions
 - The block will be closed to vehicles (besides vehicles entering and exiting the Pearl Apartment garage)
 - Flaggers will be present to assist people in driving in and out of the Pearl Apartments parking garage driveway
 - The bus stop will be temporarily closed and the bus will be detoured around the work
- Parking restrictions
 - Parking will be restricted during construction on E Pine St
 - We’re adding temporary load zones around the corner on both 15th Ave and 16th Ave to support businesses and Jewish Family Services
 - Home delivery pickups for the Jewish Family Services Food Bank will be relocated to 15th Ave and E Pine St
- Sidewalk access
 - The sidewalk on the south side will be restricted to keep pedestrians safe from heavy equipment
 - The sidewalk on the north side of E Pine St will be maintained
 - People walking or rolling can access the Jewish Family Services Food Bank at the same door on E Pine St

What to expect

- Noise, dust, and vibration
- Increased truck traffic and heavy machinery
- Large holes near the sidewalk where the storm drain will be installed
- Typical work hours are 7 AM – 5 PM, Monday through Friday

Help us coordinate with you during construction!

Please complete the construction survey on our webpage: seattle.gov/MadisonBusRapidTransit



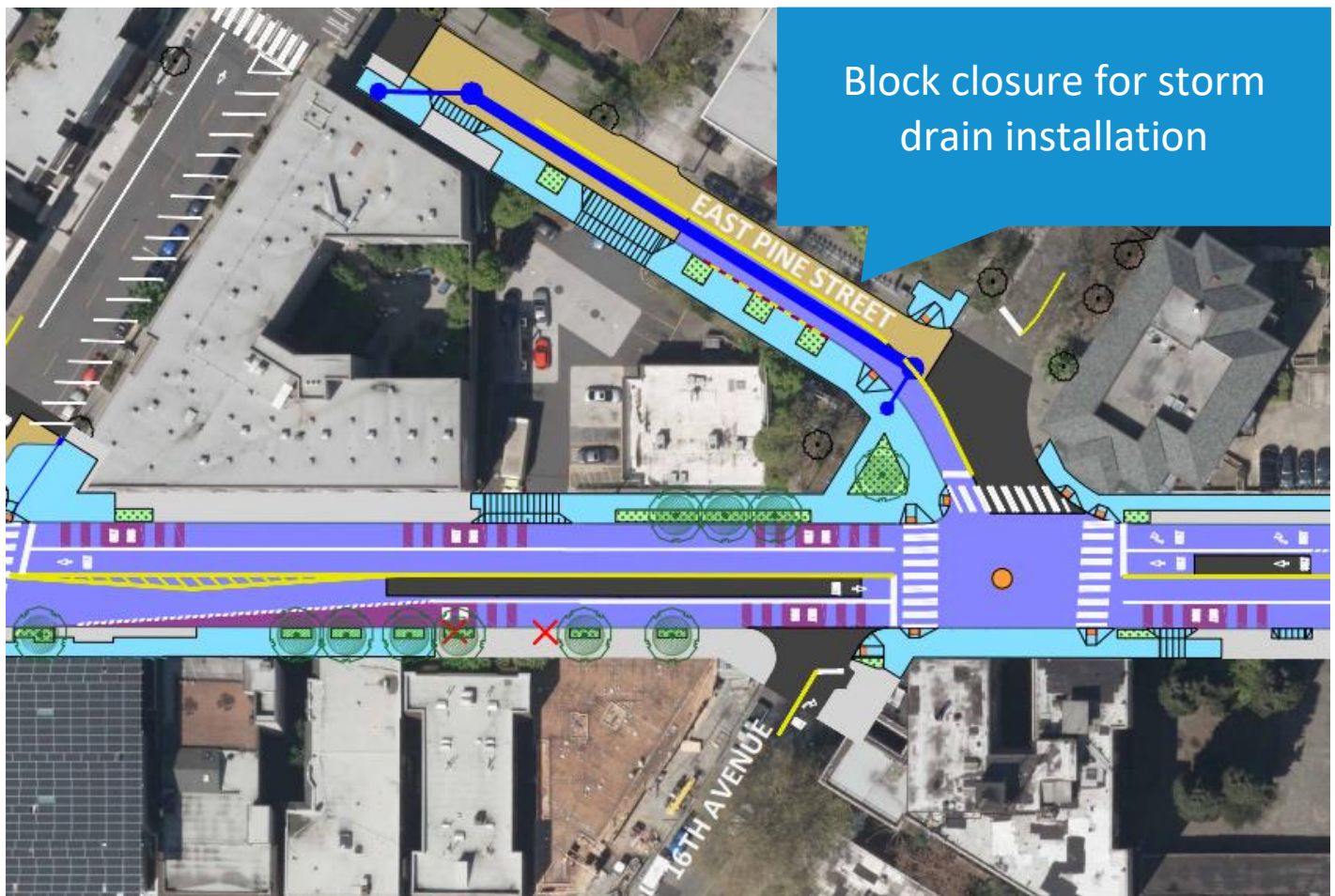
Contact us

MadisonBRT@seattle.gov
206-484-2780
seattle.gov/MadisonBusRapidTransit

City resources
Contact the Office of Economic Development to get connected to the right business resources depending on your situation:

OED@seattle.gov
206-684-8090

seattle.gov/office-of-economic-development



Visit the design sheets on our webpage for more details: seattle.gov/MadisonBusRapidTransit

Contact us with questions and for translation or access needs

If you would like translated information, please reach out and let us know! Translation services and accommodations are available by request.

Hadaaad mashruucan suaalo ka qabtii email noo soo dir: MadisonBRT@seattle.gov ama nasoo wac: 206-484-2780.

Nếu bạn có câu hỏi về dự án, vui lòng gửi email cho chúng tôi theo địa chỉ MadisonBRT@seattle.gov hoặc gọi cho chúng tôi theo số 206-484-2780.

如果您對本工程有任何疑問，請電郵 MadisonBRT@seattle.gov 或致電 206-484-2780。

यदि आपके पास प्रोजेक्ट के बारे में प्रश्न हैं, तो कृपया हमें MadisonBRT@seattle.gov पर ईमेल करें या हमें 206-484-2780 पर कॉल करें

이 프로젝트에 대한 질문이 있으시면, 이메일 MadisonBRT@seattle.gov 로또는 206-484-2780로 전화 주십시오.

Si tiene preguntas sobre el proyecto, por favor envíenos un mensaje a MadisonBRT@seattle.gov o llámenos al 206-484-2780