

SHORELINE STREET ENDS OPEN HOUSE



Seattle
Department of
Transportation

November 14, 2022



Agenda

1. INTRODUCTION
2. MEETING FORMAT
3. PURPOSE & CONTEXT
4. SHORELINE STABILIZATION
5. 11TH AVE NW STREET END
6. 6TH AVE W STREET END
7. QUESTIONS / COMMENTS

INTRODUCTIONS



Omar Akkari

Shoreline Street Ends
Program Coordinator



Seattle
Department of
Transportation

Jason Shrope

Engineering



Juliet Vong

Landscape Architecture

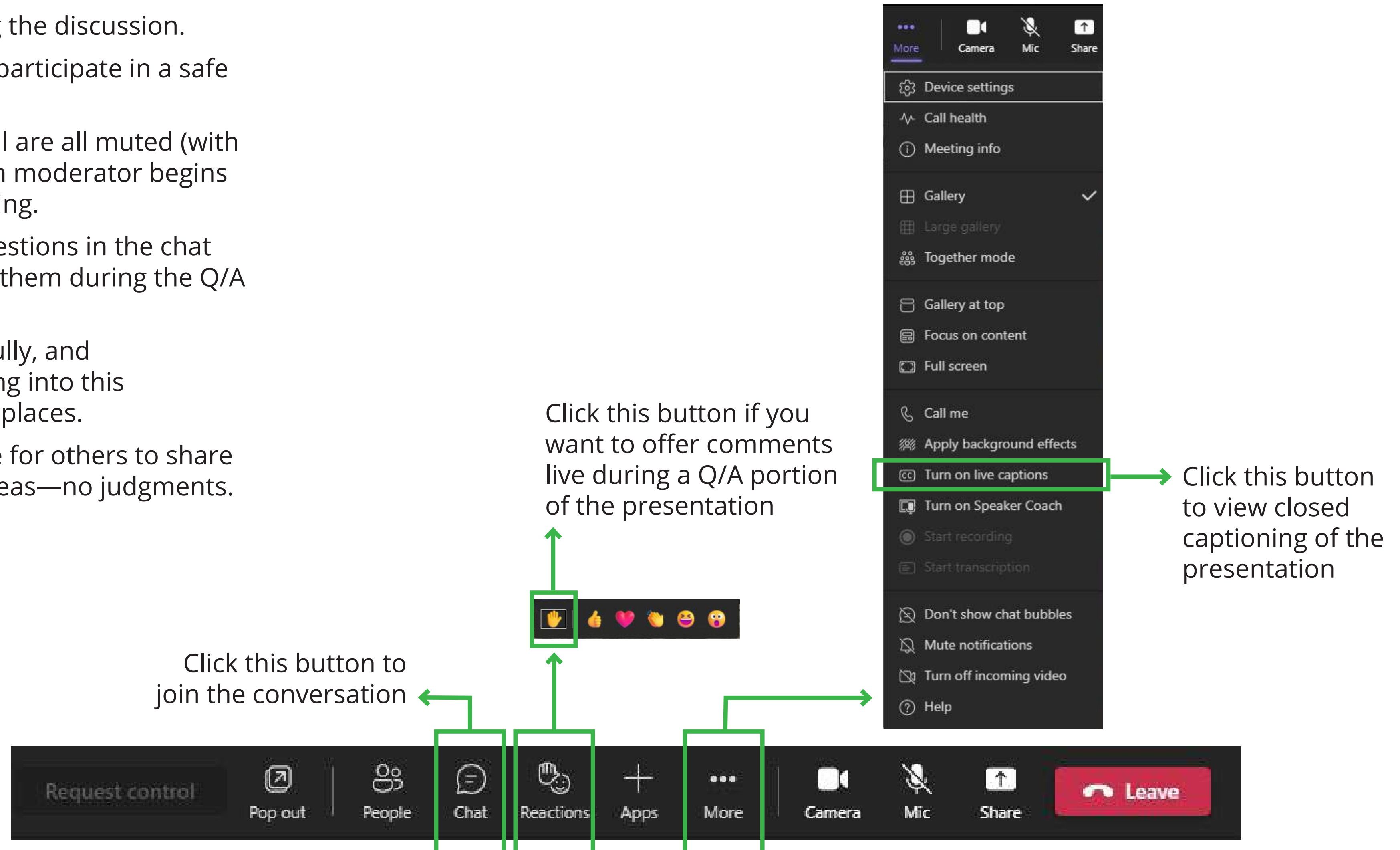


HYBRID MEETING FORMAT: Microsoft Team & In-Person

Meeting Guidelines

DISCLAIMER: This presentation will be recorded.

1. Our panelists will be guiding the discussion.
2. We're here to have fun and participate in a safe manner!
3. Those of you on a Teams call are all muted (with the video off), until the room moderator begins the Q/A portion of the meeting.
4. At any time, type in your questions in the chat feature and we will address them during the Q/A portion of the meeting.
5. Participate patiently, gracefully, and respectfully—we're all coming into this conversation from different places.
6. All ideas matter: allow space for others to share and build on each other's ideas—no judgments.



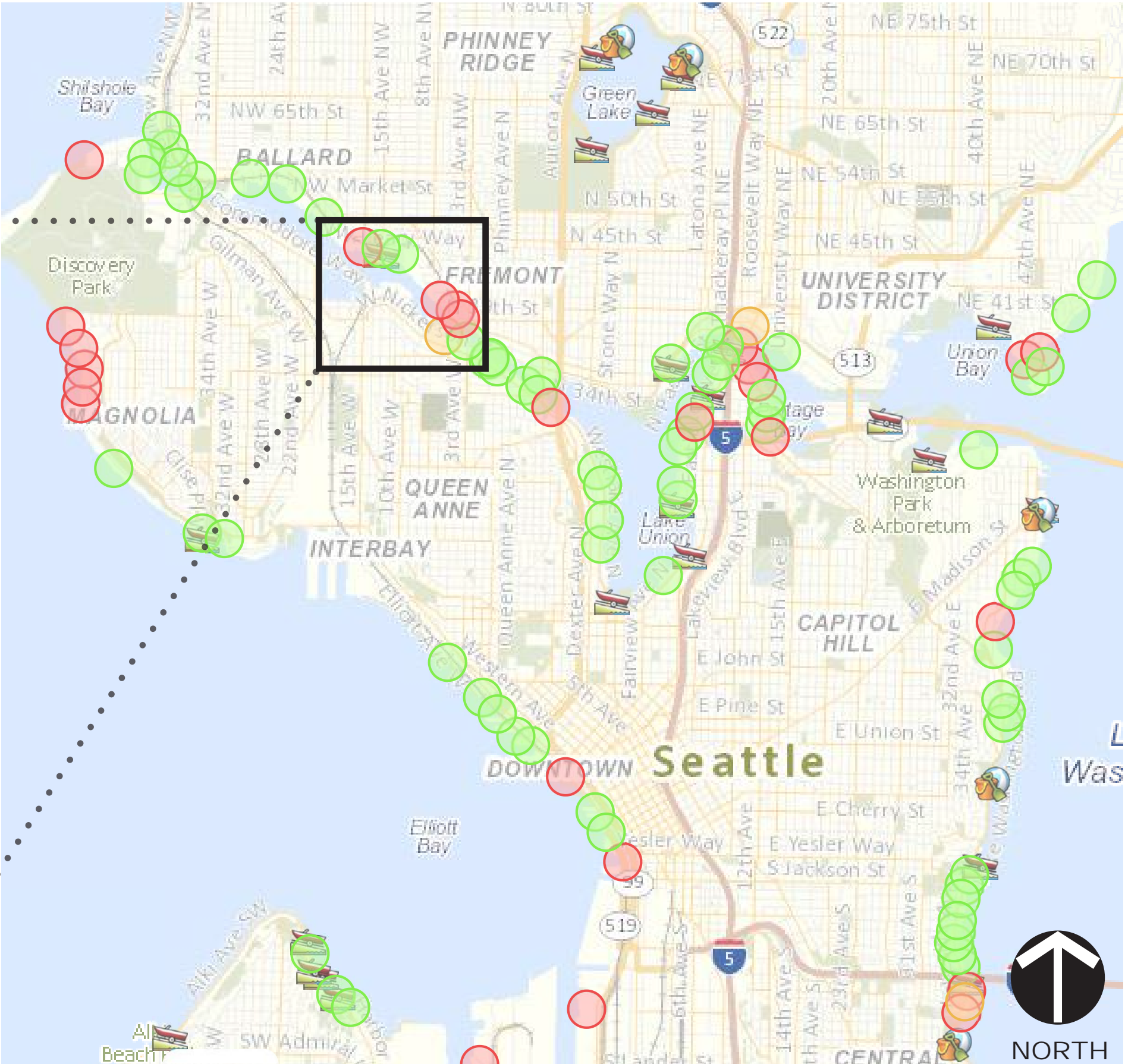
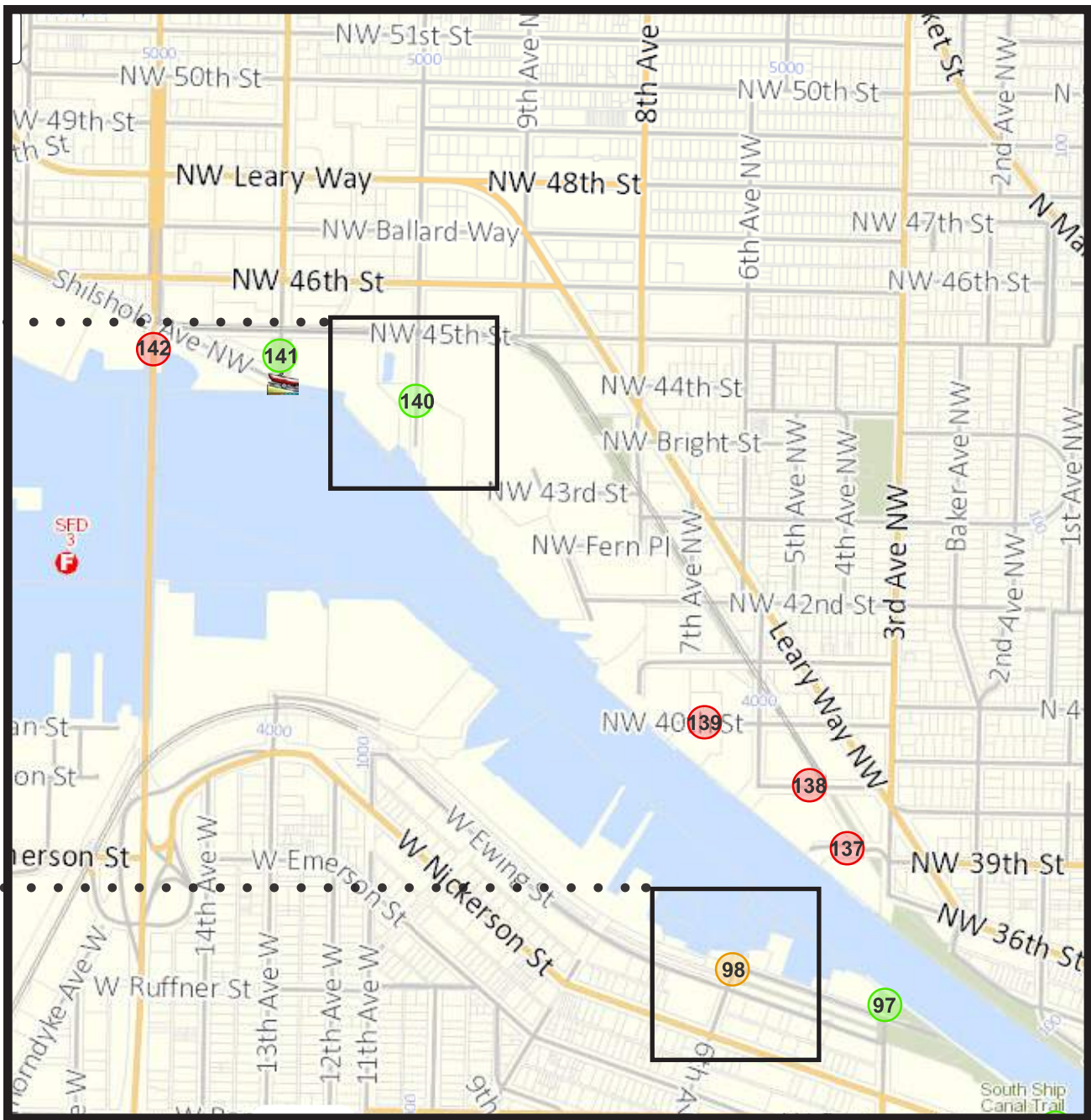
PROJECT PURPOSE & CONTEXT

The Shoreline Street Ends Program

Shoreline Street Ends Map

11th Avenue NW

6th Ave W

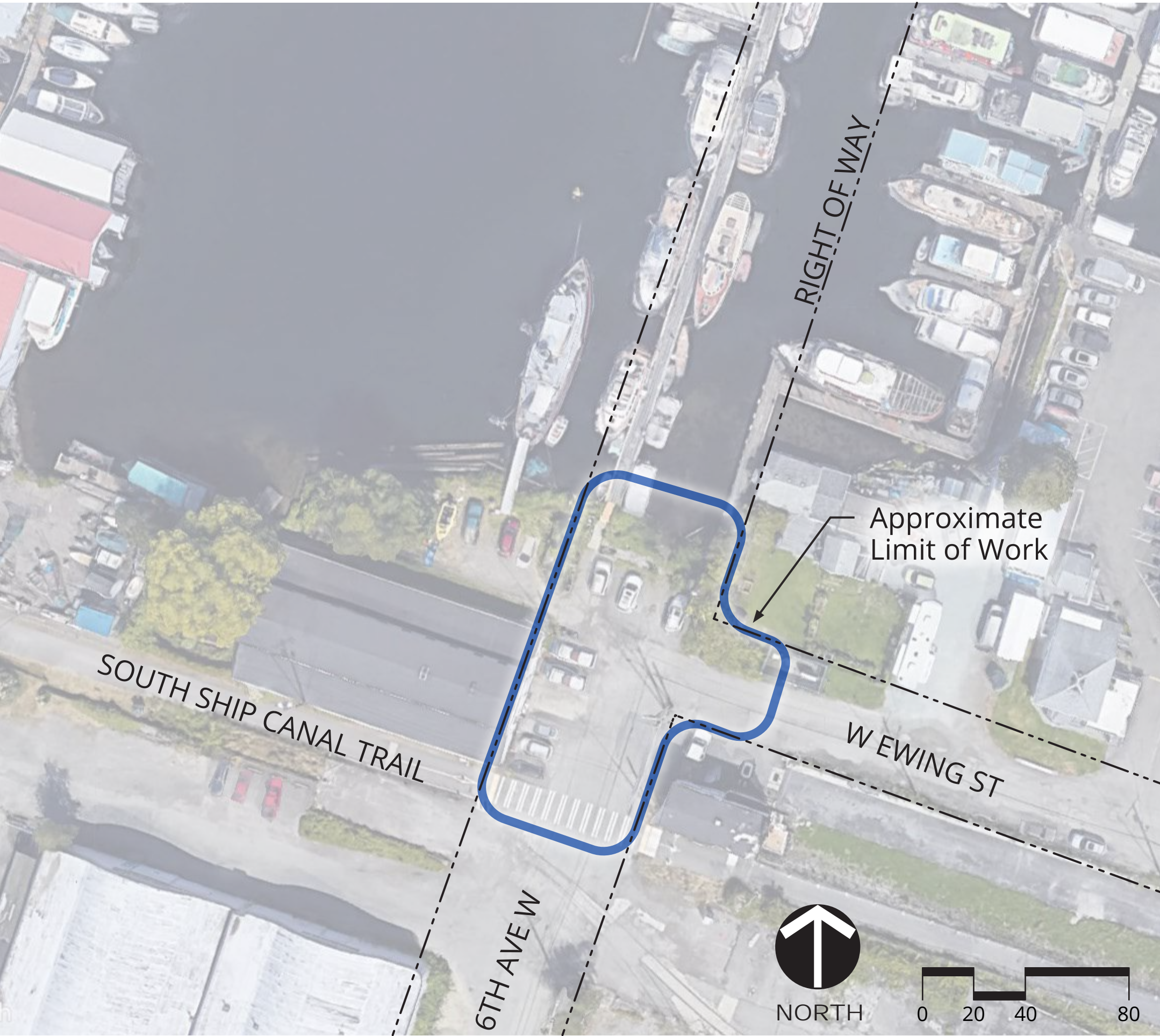


PROJECT PURPOSE & CONTEXT

11th Ave NW Street End Site



6th Ave W Street End Site



PROJECT PURPOSE & CONTEXT

Vision and Purpose

- Drainage, erosion and sediment control measures
- Slope stabilization via “soft” shoreline armoring including plantings for erosion control and habitat
- Repair/replace damaged site elements that are to remain
- Improve public access and ADA accessibility to shorelines and shore views
- Enhance aesthetic qualities of the sites
- Establish paved walkways, benches, stairs, plantings, and other improvements where appropriate



NATURE-BASED SHORELINE STABILIZATION

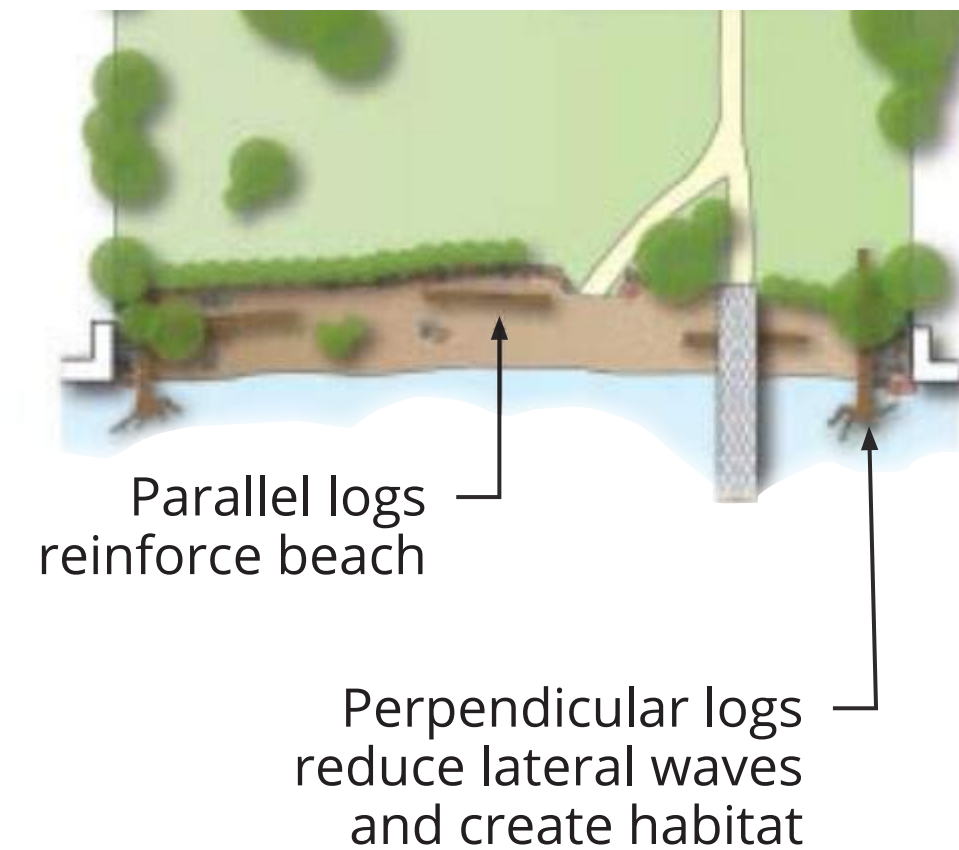
Strategies:

- Soft shorelines
- Log reinforcements
- Live revetments
combining plants such as live-staked Willows and geotextile fabric on shoreline slopes
- Gravel shorelines

Hard vs Soft Shorelines



Log Reinforcement



Example soft shoreline: logs, plants and gravel.



Log reinforcement and gravel on Seattle shoreline.

NATURE-BASED SHORELINE STABILIZATION

Plants

TREES



Crataegus douglasii, 16' H X 16' W
Douglas Hawthorn.

SHRUBS



Amelanchier alnifolia, 14' H X 8' W
Saskatoon.

GROUNDCOVERS



Solidago lepida, 4' H X 4' W
Western Canada Goldenrod

GRASSES



Deschampsia cespitosa, 3' H X 2' W
Tufted Hair Grass

Materials

LOGS



Large Salvaged Logs
Seating and Stabilization

GRAVEL



Beach Gravel
Stabilization and Aesthetics

GEOTEXTILE



Engineered Materials
Slope Stabilization

BOULDERS



Locally Sourced Boulders
Seating and Stabilization

- Durable materials for habitat and shoreline stabilization
- Native and climate adaptive plants



11TH AVE NW: Existing Conditions

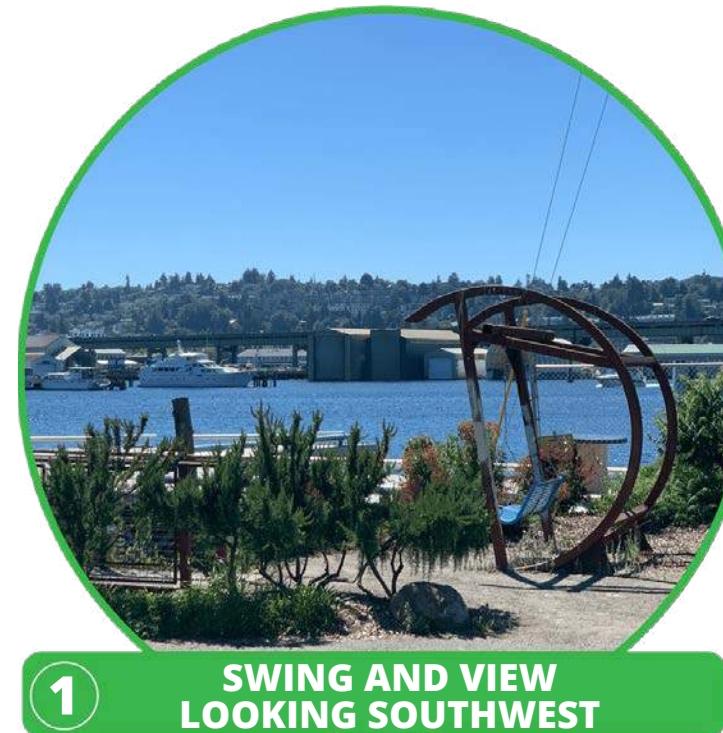
Amenities

- Shoreline view
- Legacy design from UW Design Build class completed summer 2015
- Seating elements
- Plantings
- Habitat for birds and pollinators

Challenges

- Deteriorating conditions for all wooden elements
- Shoreline erosion
- Lack of accessible paths to existing amenities and views
- Conflicts between uncontrolled parking and entrances to the overlook area

[Link to Street View](#)



11TH AVE NW: Existing Conditions

Site View from 11th Ave NW



Shoreline Erosion



Ponding and Deteriorating Deck



11TH AVE NW: Conceptual Plan

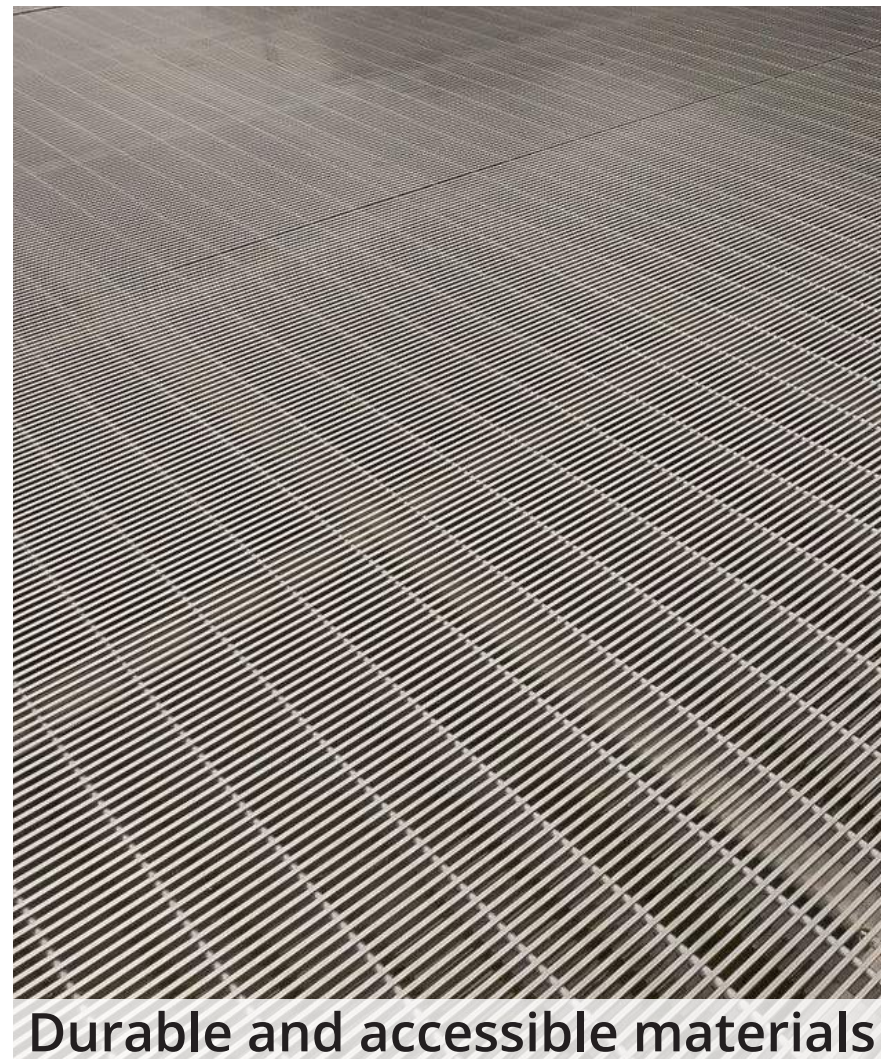
Planned Improvements

- Improve accessibility to key site amenities
- Remove or replace deteriorating elements currently limiting access and posing safety risks
- Improve existing buffer plantings between amenities and the adjacent street
- Stabilize shoreline slope using nature-based strategies

Materials



Shoreline stabilization



Durable and accessible materials



Retain existing character



11TH AVE NW: Concept Alternatives

1. Elevated Decking or On-Grade Platform?

- Retaining the elevated deck design would still require use of more durable materials such as metal grating, which has a higher level of maintenance than a paved walkway and could be more challenging for accessibility to the overlook. The overlook would connect to the swing chair via ramp.
- An on-grade platform made of concrete or other hard surface paving would simplify accessibility and ease of maintenance.

Examples for Viewing Platform



On-grade viewing platform (34th Ave NW)



Existing elevated viewing platform



Questions to Consider

- What elements of the proposed improvements are of greatest interest to you?
- Do you have concerns about any of the proposed improvements?
- What would you like to see prioritized if anything?

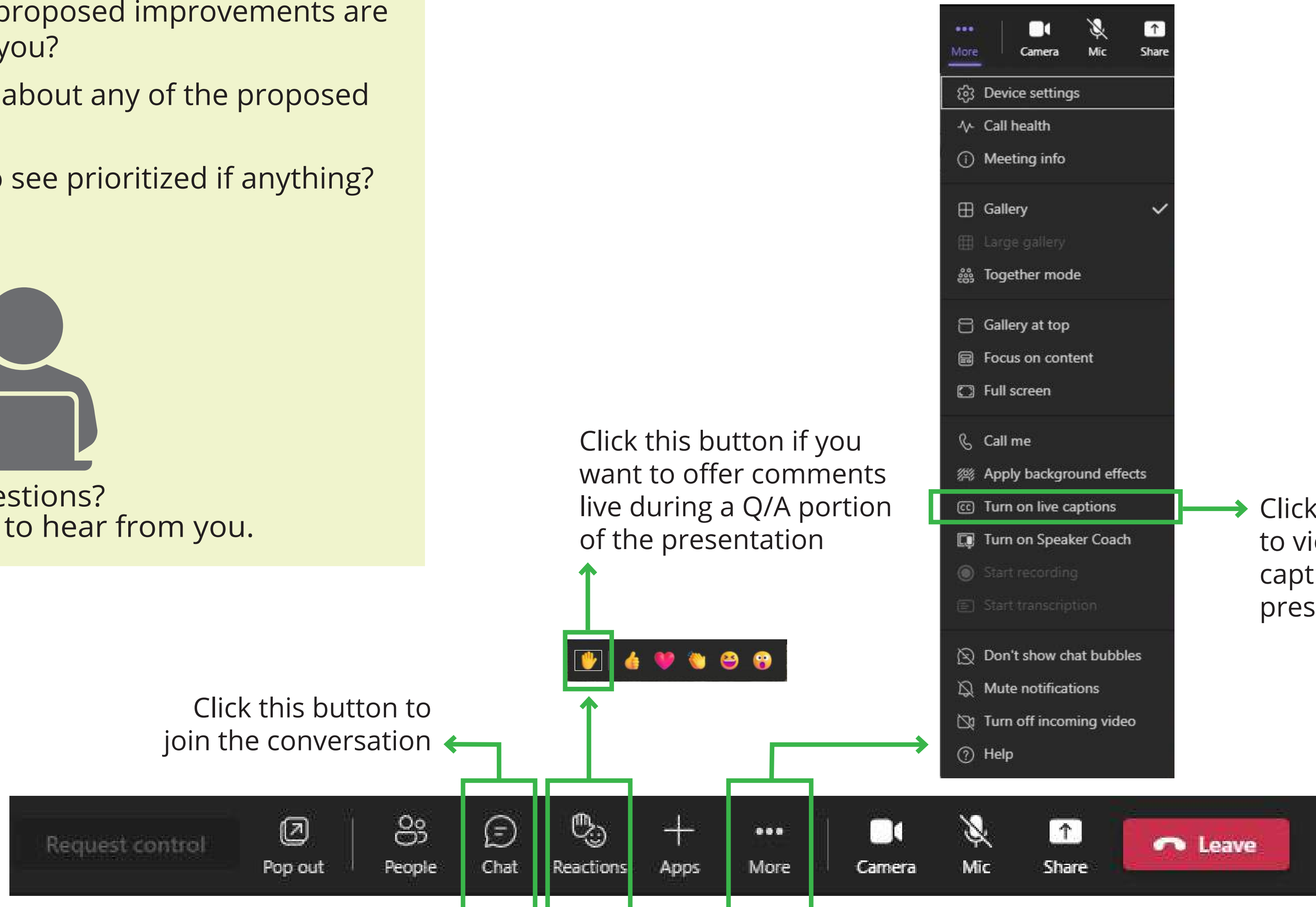


Questions?
We would like to hear from you.

Click this button if you want to offer comments live during a Q/A portion of the presentation

Click this button to view closed captioning of the presentation

Click this button to join the conversation



6TH AVE W: Existing Conditions

Amenities

- Shoreline access
- Trail access
- Vegetated areas
- Dock access for residents

Challenges

- No accessibility
- No clear connection to South Ship Canal Trail
- No clear separation between public and private areas

[Link to Street View](#)



1 EXISTING SHORELINE



2 EXISTING PARKING



3 PEDESTRIAL/BICYCLE TRAIL



6TH AVE W: Existing Conditions

Site View from 6th Ave W and E Ewing Street



Shoreline View



The Swale



6TH AVE W: Conceptual Plan

Proposed Improvements

- Public access to the water
- Shoreline vegetation
- Striped walkway from trail to the Street End
- Seating and/or picnic table
- Public art bollards
- Pothole repair
- Regrading to reduce ponding

Concept Alternatives



Organic Concept



Urban Concept



Sedimentary Concept



Art bollards

Concept Statement

An intuitive layout emphasizing green space and seating opportunities.



Concept Statement

A clean design with wide beach area and greater separation between the open space and the adjacent street.



Concept Statement

A unique layout that balances beach, vegetation, and paved areas.



Questions to Consider

- What elements of the proposed improvements are of greatest interest to you?
- Do you have concerns about any of the proposed improvements?
- What would you like to see prioritized if anything?

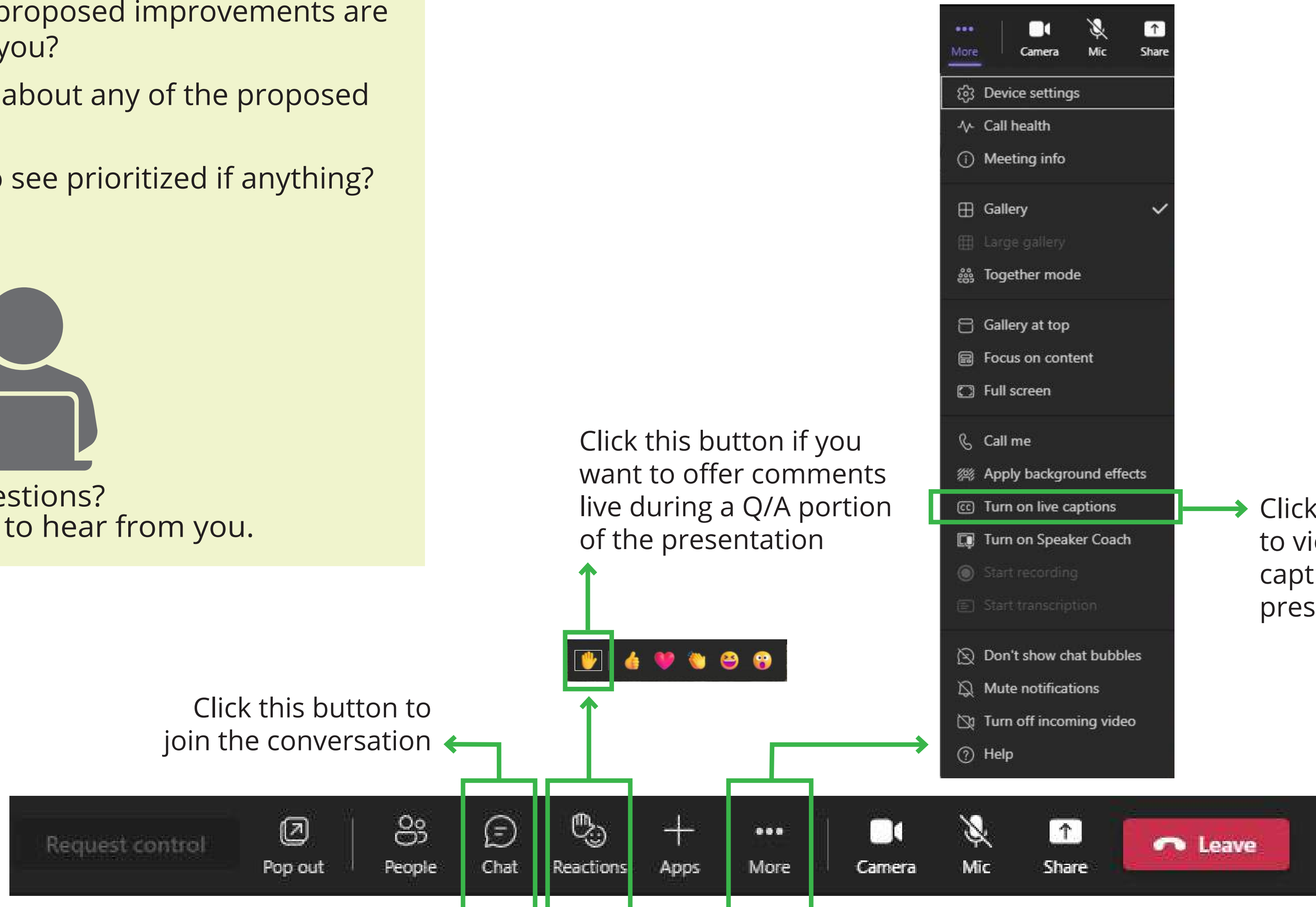


Questions?
We would like to hear from you.

Click this button if you want to offer comments live during a Q/A portion of the presentation

Click this button to join the conversation

Click this button to view closed captioning of the presentation



Q: Which concept design would you prefer to see at the 6th Ave W. Street End Park?

Organic Concept



Urban Concept



Sedimentary Concept



Date	Action
November (we are here)	First Public Meeting: Conceptual Design
December	Design Commission Subcommittee Meeting
January	Public Meeting: 60% Design
March	Public Meeting: 90% Design

Your Input is Important to Us!

The survey should take approximately 5-10 minutes to complete and will help guide the design and planning for the street end parks at 11th Ave NW and 6th Ave W.

You can also find more information about the Shoreline Street Ends Program online by searching for Shoreline Street Ends Program at seattle.gov/transportation/stuse_stends.htm



SURVEY LINK

If you need assistance completing the survey, please contact us at **(206) 233-5114**

Questions?

Contact the Shoreline Street Ends Program Coordinator:

Omar Akkari

(206) 233-5114

omar.akkari@seattle.gov