

Aurora Ave Project



Seattle
Department of
Transportation

**Let's make traveling on Aurora
safer and easier for everyone!**

Project Overview



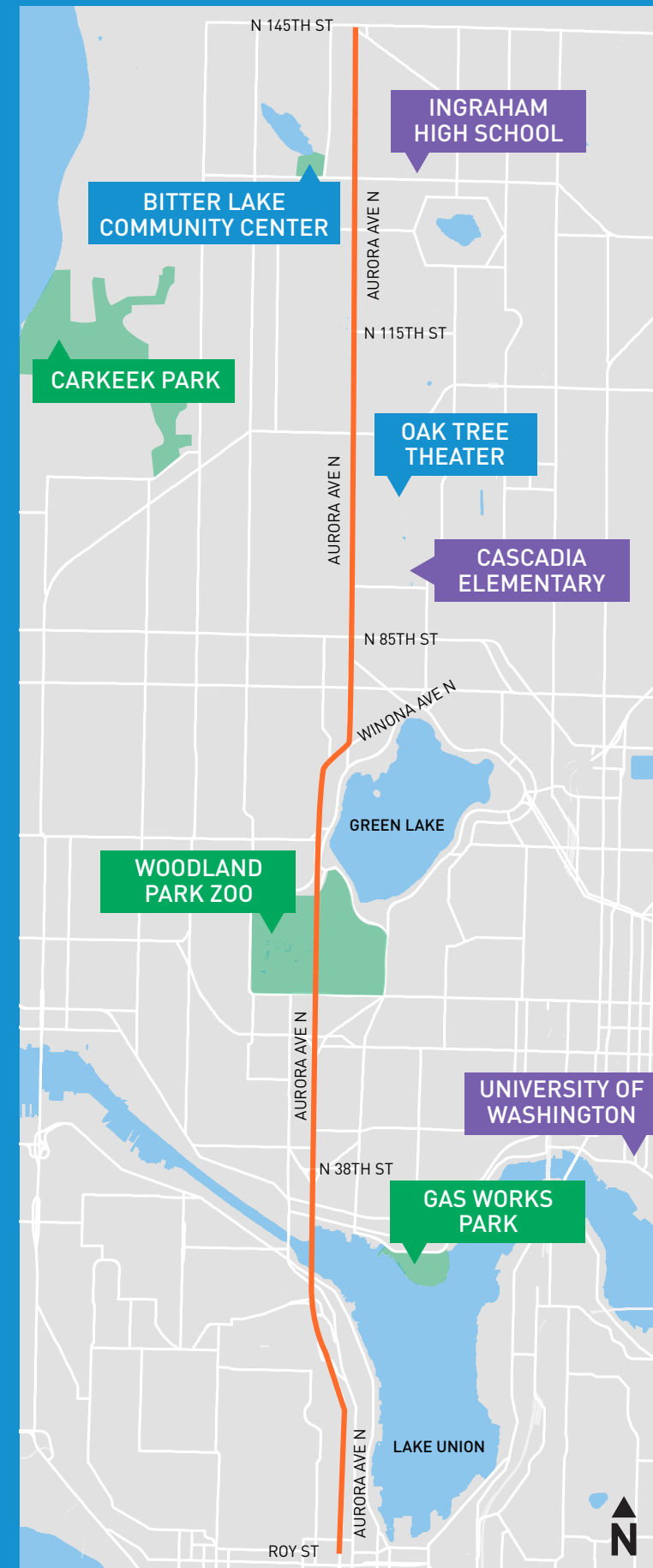
Seattle
Department of
Transportation



King County
METRO

Project Goals:

- Involve people who live, work, and play near the corridor in creating a shared vision
- Reduce collisions for all users



Project Outreach, Phase 1

59,000
reached



in person



online



Community Feedback

Safety improvements



biking



walking

Collision Reduction



Crossing Locations



Social Concerns

Timeline



Transit Upgrades

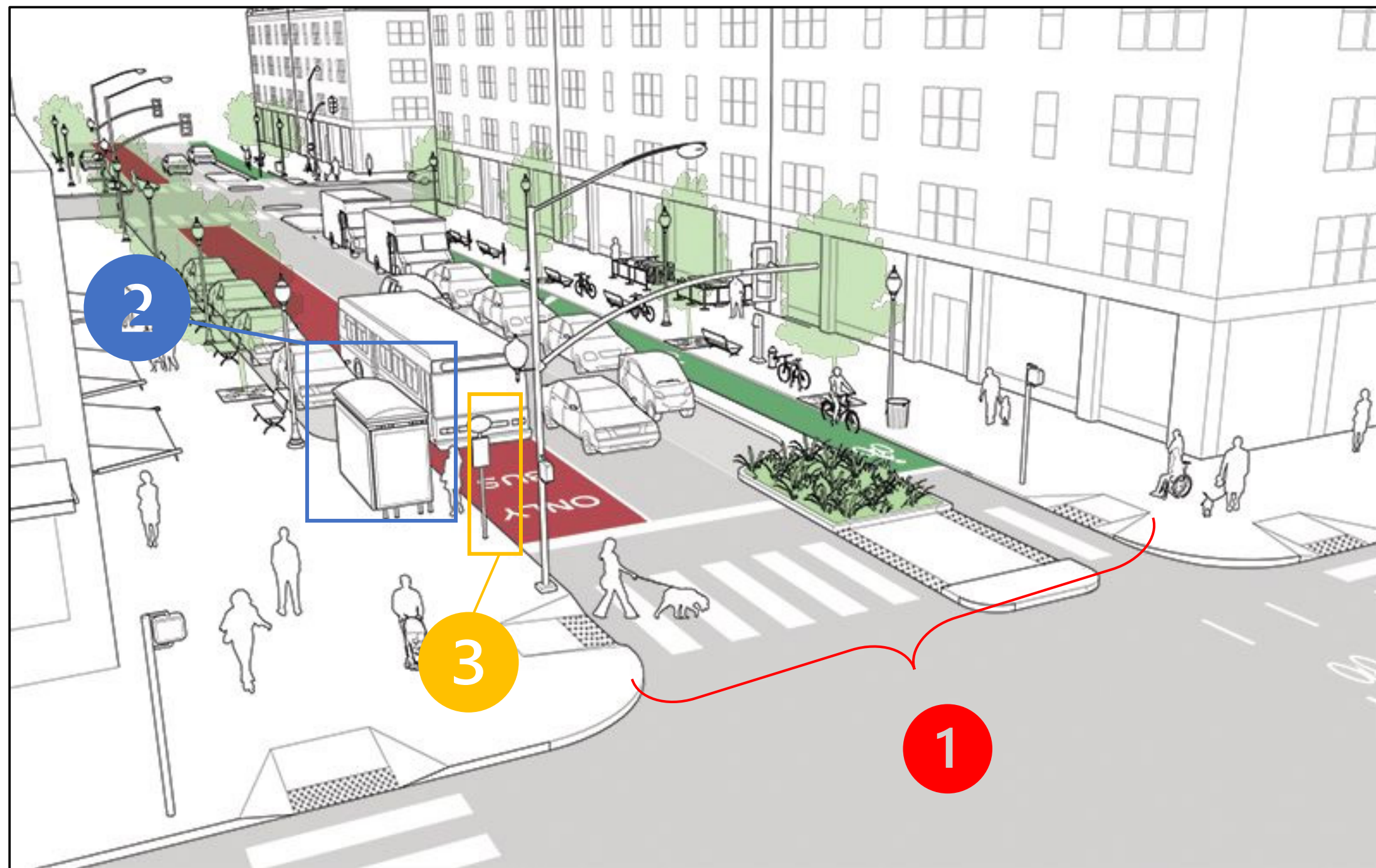
What do you want implemented on Aurora Avenue?



Before upgrades

Transit Upgrades

What do you want implemented on Aurora Avenue?



Potential Treatments Include:

- 1. Safe access via sidewalks and appropriate street crossing locations.
- 2. Bus shelters on routes with high boarding numbers.
- 3. Information to riders at a bus or transit stop

After upgrades

Images shown are for illustration purposes only

Transit Upgrades

Transit upgrades can take many forms



Before



After

Images shown are for illustration purposes only

Roadway Configurations

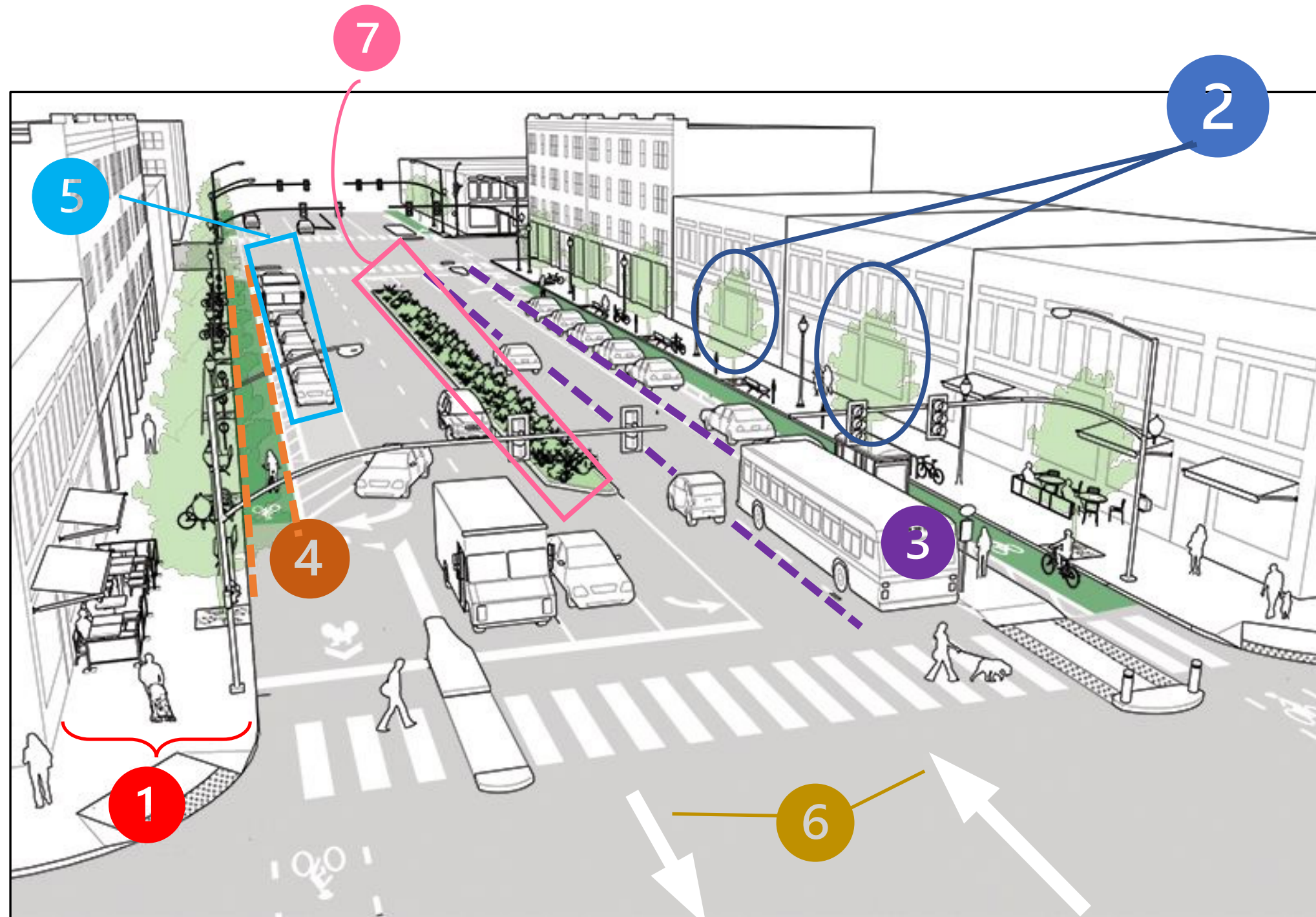
What do you want implemented on Aurora Avenue?



Before upgrades

Roadway Configurations

What do you want implemented on Aurora Avenue?



Potential treatments include:

1. Provide sidewalks/more space on sidewalks
2. Street trees or vegetation
3. Bus Only Lanes
4. Bike lanes
5. Parking and load zones
6. Maintaining two general purpose travel lanes
7. Landscaped center median

After upgrades

Images shown are for illustration purposes only

Roadway Configurations

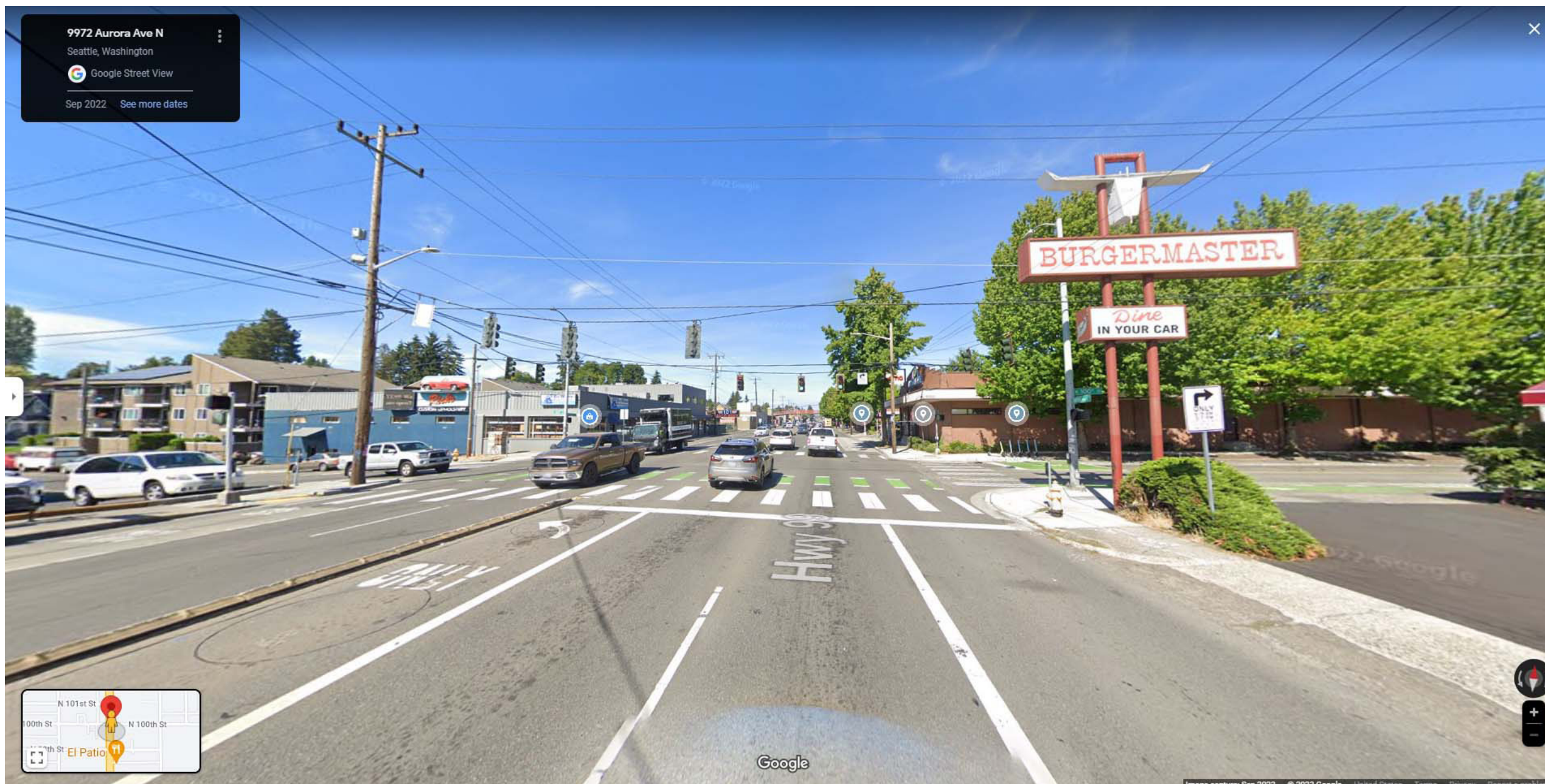
Roadway configurations can take many forms



Images shown are for illustration purposes only

Corridor Safety Treatments

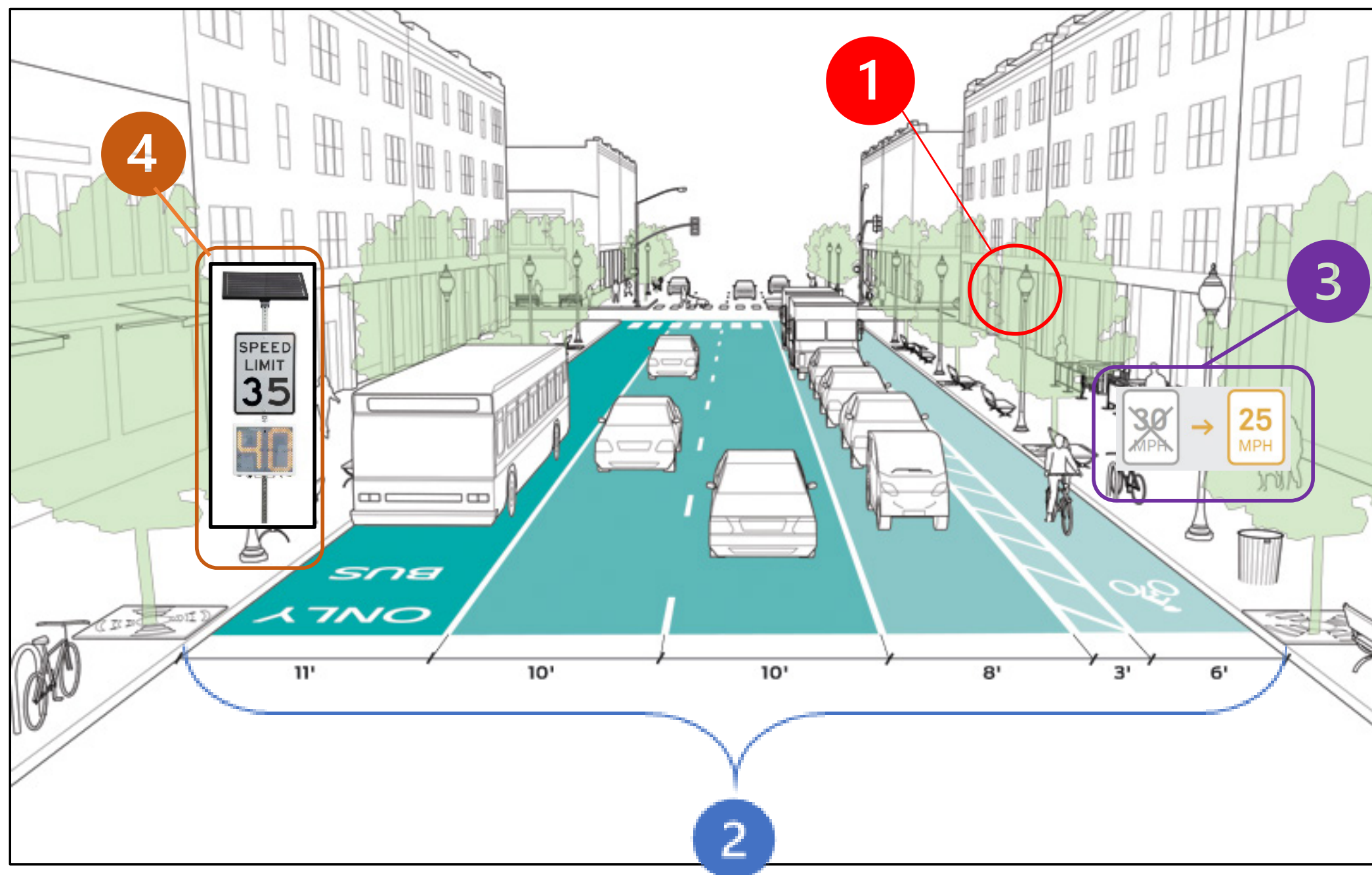
What do you want implemented on Aurora Avenue?



Before upgrades

Corridor Safety Treatments

What do you want implemented on Aurora Avenue?



Potential treatments include:

1. Pedestrian scale lighting
2. Narrowed travel lanes
3. Reduced speed limits
4. Radar speed feedback signs

After upgrades

Images shown are for illustration purposes only

Corridor Safety Treatments

Corridor safety treatments can take many forms



Before



After

Images shown are for illustration purposes only

Spot Safety and Walkability Improvements

New pedestrian and bike crossings

What do you want implemented on Aurora Avenue?



Before upgrades

Spot Safety and Walkability Improvements

New pedestrian and bike crossings

What do you want implemented on Aurora Avenue?



After upgrades

Images shown are for illustration purposes only

Spot Safety and Walkability Improvements

New pedestrian and bike crossings

Spot safety and walkability improvements can take many forms



Images shown are for illustration purposes only

Spot Safety and Walkability Improvements

New traffic signals

What do you want implemented on Aurora Avenue?

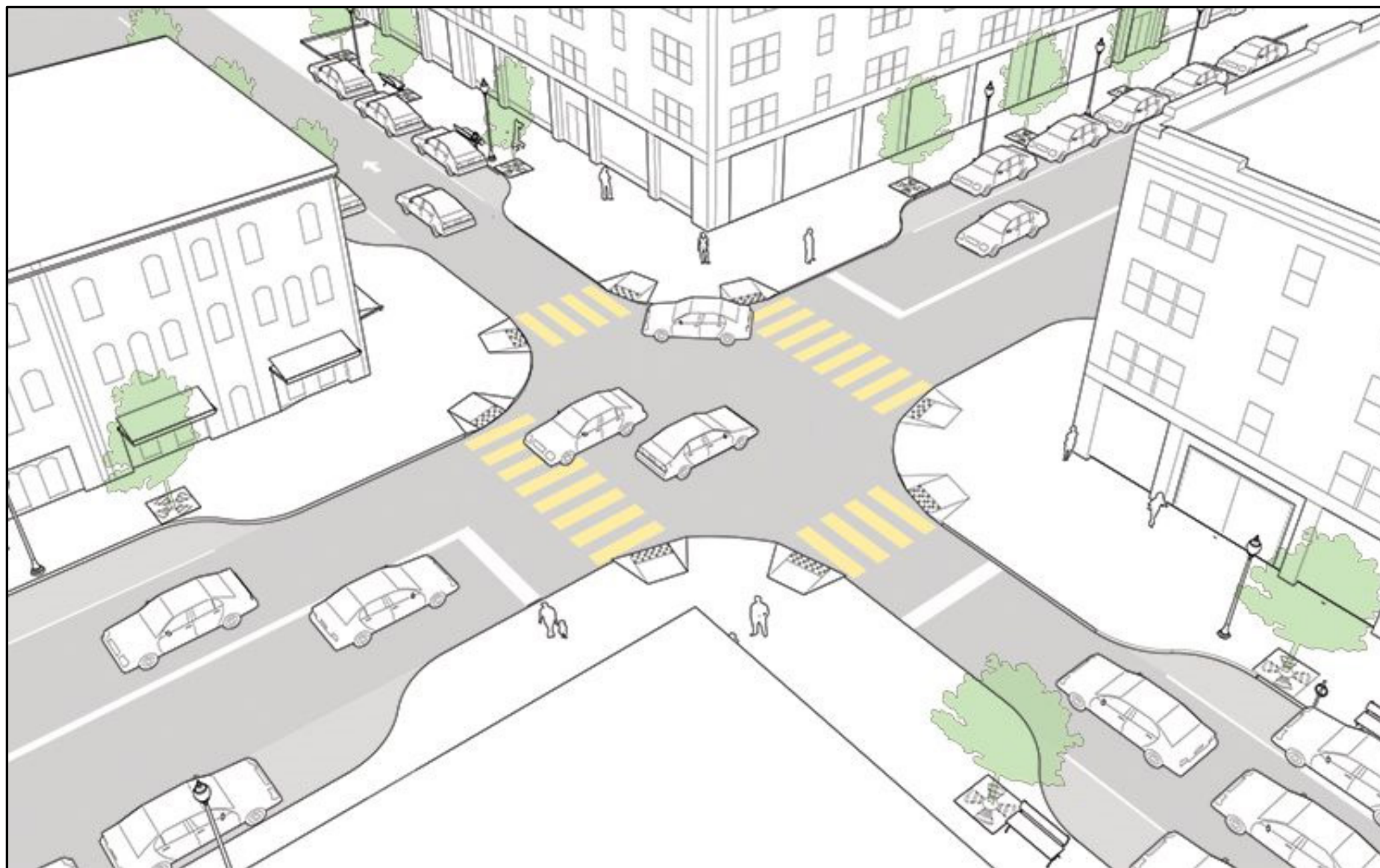


Before upgrades

Spot Safety and Walkability Improvements

New traffic signals

What do you want implemented on Aurora Avenue?



After upgrades

Images shown are for illustration purposes only

Spot Safety and Walkability Improvements

New traffic signals

Spot safety and walkability improvements can take many forms

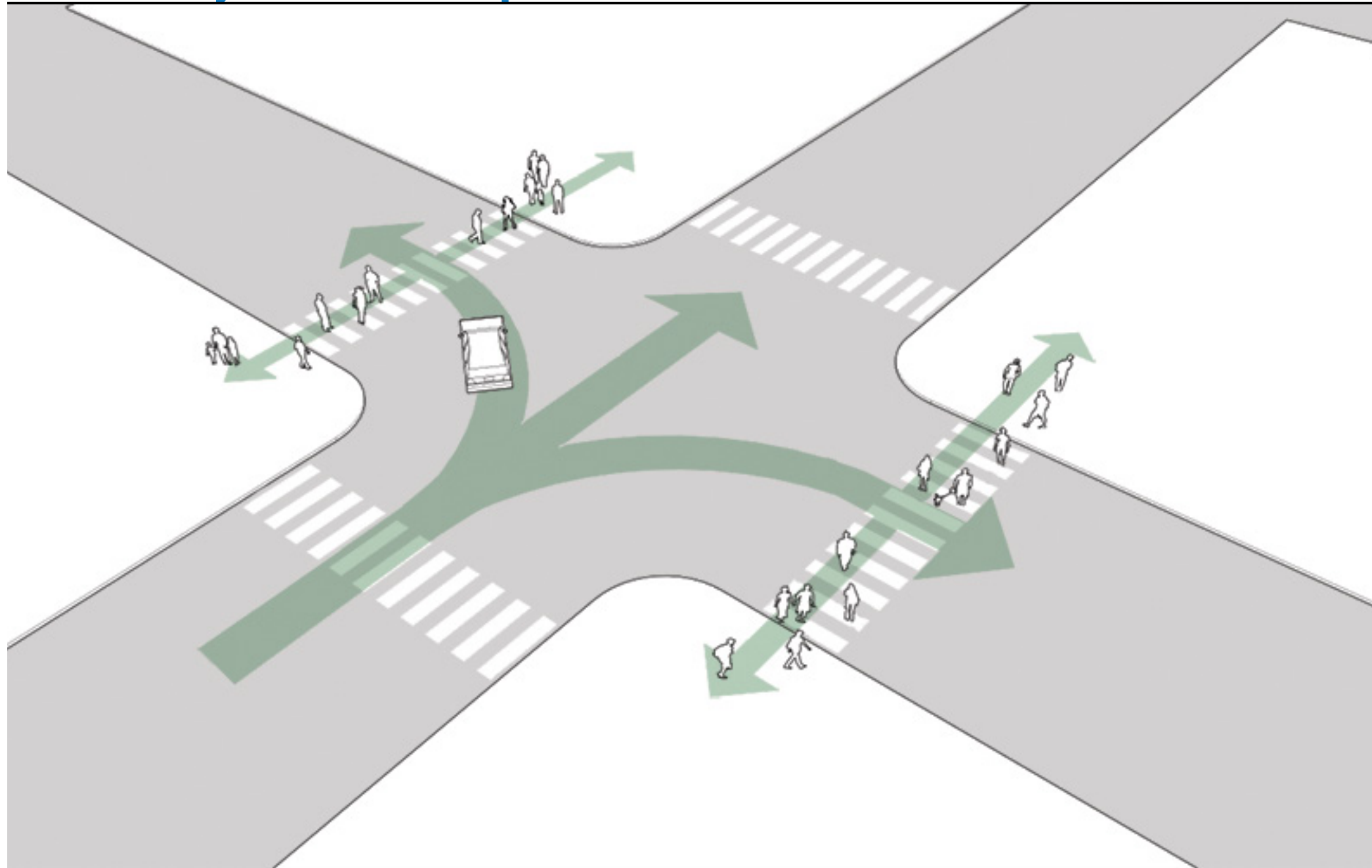


Images shown are for illustration purposes only

Spot Safety and Walkability Improvements

Left turn restrictions

What do you want implemented on Aurora Avenue?



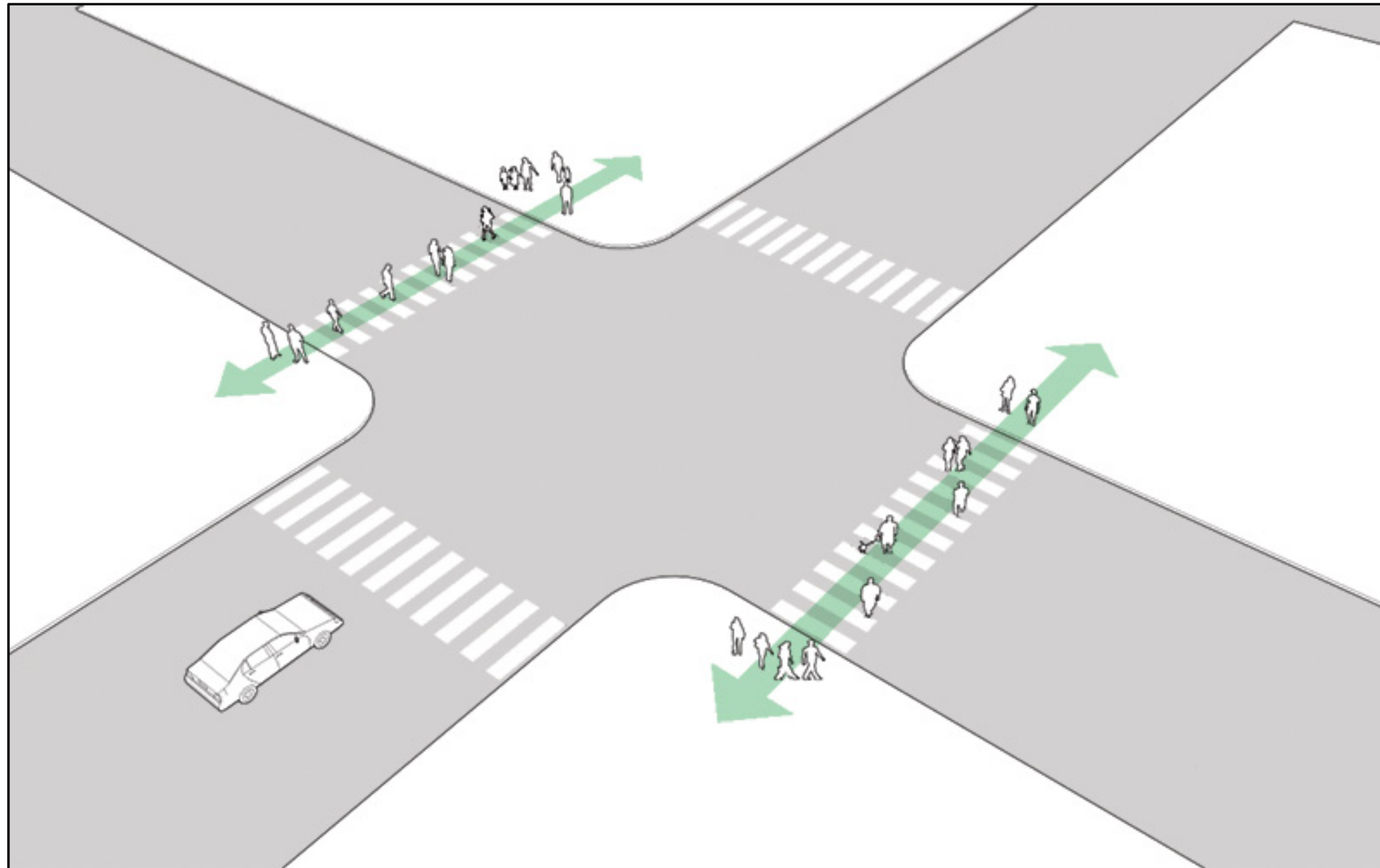
Before upgrades

Images shown are for illustration purposes only

Spot Safety and Walkability Improvements

Left turn restrictions

What do you want implemented on Aurora Avenue?



After upgrades

Images shown are for illustration purposes only

Spot Safety and Walkability Improvements

Left turn restrictions

Spot safety and walkability improvements can take many forms



Images shown are for illustration purposes only

Spot Safety and Walkability Improvements

New pedestrian-oriented public spaces along the sidewalk

What do you want implemented on Aurora Avenue?



Before upgrades

Images shown are for illustration purposes only

Spot Safety and Walkability Improvements

New pedestrian-oriented public spaces along the sidewalk

What do you want implemented on Aurora Avenue?



After upgrades

Images shown are for illustration purposes only

Spot Safety and Walkability Improvements

New pedestrian-oriented public spaces along the sidewalk

Spot safety and walkability improvements can take many forms



Images shown are for illustration purposes only

Stay in touch!



aurorastudy@seattle.gov



206-905-3620



[www.seattle.gov/transportation/
auroraproject](http://www.seattle.gov/transportation/auroraproject)



Seattle
Department of
Transportation

Dankie Shukran Ta Do Jeh Xie Xie Dêkuji Tak Kiitos

Merci Danke Efharisto Toda Sukria Terima kasih

Grazie Arigato **Thank you** Kamsa hamnida

Takk Salammat po Dziekuje Obrigado Spasibo Gracias

Istutiy Asante Tack Kawp-Kun krap/ka' Tesekküredirim

Your feedback is very important!



Seattle
Department of
Transportation