

Seattle Free-Floating Scooter Share Pilot

2020 Permit Overview

June 2020

Seattle Department of Transportation



City of Seattle

Presentation Overview

- Introduction
- Pilot Considerations
- Pilot Opportunities



Pilot Considerations



What is Scooter Share?

- Like bike share
 - Free-floating
 - 15 mph limit
 - Parked in the paved furniture zone, bike rack, or corral
- In dozens of US cities, including Portland, San Francisco, and Los Angeles.



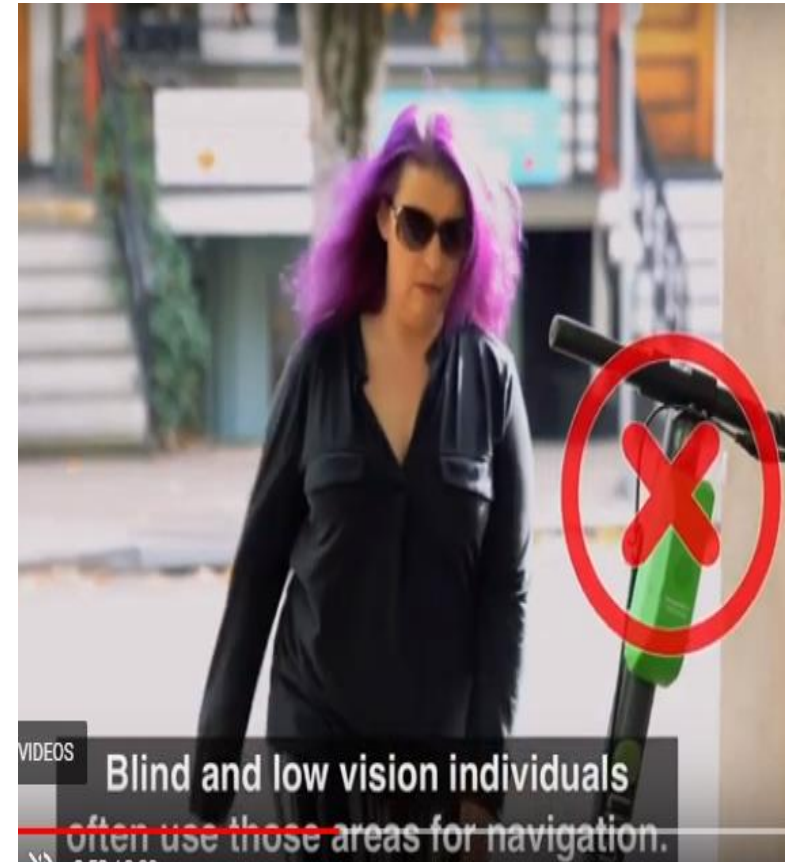
Scooters and COVID - 19

- Included in Washington State Phase 2 Guidelines
- Scooters are essential transportation in cities across the US, including Portland, Los Angeles, San Francisco, Denver, Washington D.C.



Pedestrian Safety

- No riding on sidewalks except as part of a bike path (existing SMC)
- Park only in furniture zones or bike racks
- No-park geofenced areas where appropriate
- On-device and in-app parking education
- Find-It Fix-It & 684-ROAD public reporting
- Staff auditing and rider/vendor financial penalties for parking obstructions



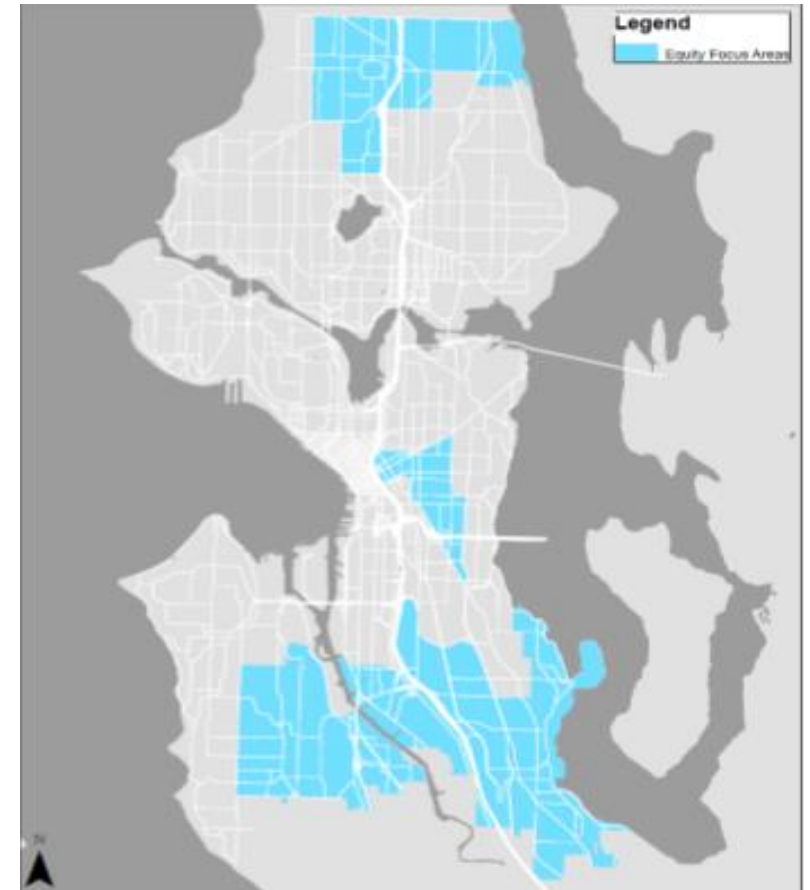
Rider Safety

- Permitted on bike lanes, public paths, ≤ 25 mph roads
- 15 MPH top speed
- Rider's 1st ride: 8 MPH top speed
- In-app education and quizzing
- Incentivized helmet use
- COVID-19 sanitation requirements
- Public Safety Study (Harborview and UW)



Equity

- At least 10% fleet distribution in Environmental Justice Community area
- Low income plans
- Low barrier plans for those without smartphones or credit/banking
- Equity centered outreach to guide future programming



Budget

- 100% funded with permit fees
- Supports:
 - Bike share management
 - Outdoors for All partnership
 - Micromobility focused equity and outreach work





Pilot Opportunities



COVID 19

As part of a recovery, scooters can:

- Allow for physical distancing in transportation
- Provide a low-carbon and popular transportation option as the economy reopens
- Provide new jobs



West Seattle

Scooters can:

- Help more people reach transit and the water taxi
- Help people reach their neighborhood destination without getting in a car
- Get over the low-bridge using the bike lane



Climate

- Around 25% of scooter trips replace car trips
- Scooters can:
 - Replace 175,000 car trips / month
 - Reduce monthly CO2 emissions by 85 metric tons
- Seattle-specific life cycle analysis proposed as part of scooter share



Questions?

Seattle Department of Transportation
www.seattle.gov/scootershare

