

This project aims to keep people and goods moving, while making the RapidRide D bus line more reliable and making travel safer for everyone. The project includes all the original elements from earlier design stages, as well as new enhancements informed by community input and our Vision Zero goal to end traffic deaths and serious injuries on city streets. Find out what's new inside!

15th Ave W/NW & Ballard Bridge Paving & Safety Project



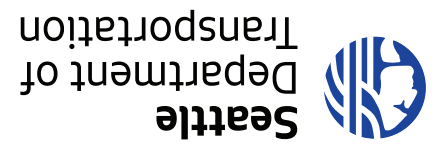
Please scan the QR code or visit www.seattle.gov/transportation/15thAveBallardBridgePaving to learn more about the project.

HAVE A QUESTION?

Email 15thAveW_NWpaving@seattle.gov or give us a call at **(206) 512-3950**

ORIGINAL PROJECT ELEMENTS

- Pave 15th Ave W/NW from W Emerson to NW 57th St, including the fixed portions of the Ballard Bridge
- Replace bridge expansion joints
- Improve earthquake safety by strengthening the north end of the Ballard Bridge (also called the Leary Bridge)
- Repair sidewalks, driveways, and stormwater drainage areas
- Upgrade curb ramps to meet current ADA standards
- Build missing curb ramps at all east-west crossings along 15th Ave NW
- Update pedestrian crosswalk signs and refresh pavement markings for better visibility
- Plant new trees and replace old trees in select areas
- Install new or expand existing tree pits to keep trees healthy
- Add red "bus only" lane markings to the existing northbound transit lane on 15th Ave NW between NW 51st St and NW Market St



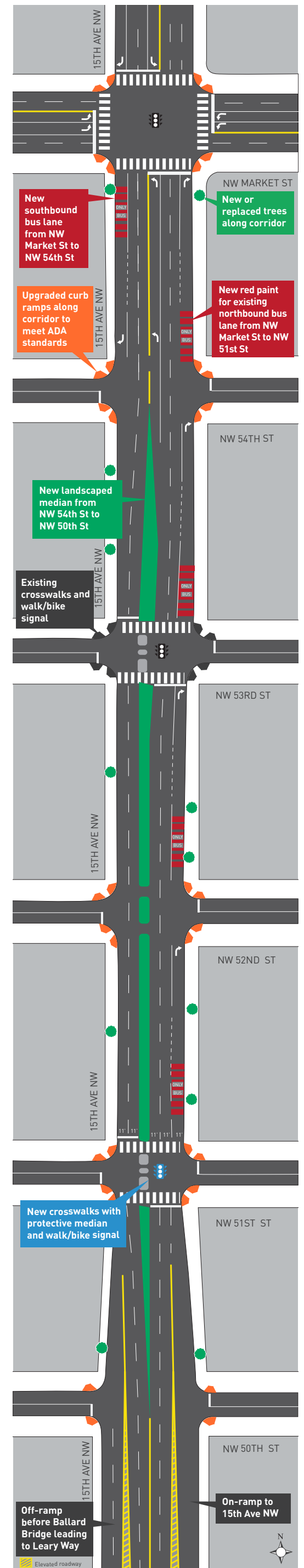
NEW ENHANCEMENTS

- **Install a new bike and pedestrian signal and crosswalk at NW 51st St**, making it easier to walk, roll, or bike around the neighborhood and connecting people to Ballard businesses, attractions, and transit
- **Replace a southbound lane on 15th Ave NW with a new landscaped median** between NW 50th St and NW 54th St to calm driver speeds and reduce the likelihood of serious crashes
- **Add a new southbound transit lane** with red "bus only" markings on 15th Ave NW between NW 54th St and NW Market St
- **Add a new southbound transit lane** with red "bus only" markings on 15th Ave NW between Leary Way NW and NW Ballard Way
- **Improve and add new lighting under the bridge** along Leary Way NW and on the pedestrian path near the intersection of 15th Ave NW and W Nickerson St

FULL PROJECT AREA



SAFETY ENHANCEMENTS NORTH OF THE BALLARD BRIDGE



NEW SAFETY ENHANCEMENTS AT NW 51ST ST AND 15TH AVE NW

A new bike and pedestrian signal, crosswalk, and protective median at NW 51st St will make it easier to walk, roll, and bike around the neighborhood, connecting people to Ballard businesses, attractions, and transit.

