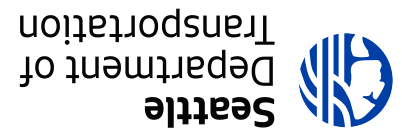




Seattle
Department of
Transportation

P.O. Box 34996
Seattle, WA 98124-4996

PRSR STD
US Postage
PAID
Seattle, WA
Permit No. 2871



**Construction will
begin as early as
mid-October 2024**

NE 135TH ST NEIGHBORHOOD GREENWAY

CONSTRUCTION NOTICE

We are excited to share that the construction of the NE 135th St Neighborhood Greenway will start as early as Mid-October 2024. This Neighborhood Greenway will provide a safer connection for people walking and biking on NE 135th St and will connect to the improvements we are making on NE 135th St and creates safe routes to school. We will be installing a new sidewalk on the south side between Lake City Way NE and 35th Ave NE. Additionally, we are building a neighborhood greenway that includes:

- A biking connection between 27th Ave NE and 30th Ave NE
- New marked crosswalks at both arterial legs of 30th Ave NE and NE 135th St
- A crosswalk with a Rectangular Rapid Flashing Beacon (RRFB) on the north leg of 35th Ave NE

The planned neighborhood greenway connects residents to local schools, parks, and businesses as well as the citywide transportation network. The new neighborhood greenway will connect affordable, active transportation options for people of all ages and abilities.

NEIGHBORHOOD GREENWAY DESIGN ELEMENTS

Neighborhood greenways can include:

- 20 mph speed limit signs
- Speed humps to calm traffic
- Stop signs for side street crossing the neighborhood greenway
- Signs and pavement markings to help guide pedestrians
- Easier crossing of busy streets with crosswalks, flashing beacons, or traffic signal

CONSTRUCTION IMPACTS

The impacts on the neighborhood streets will be minimal. When work is about to begin on your street, you will see “No Park” signs placed in advance.

WHAT TO EXPECT DURING CONSTRUCTION

Typical weekday work hours of 7 AM – 5 PM, Monday through Friday

- Temporary driveway impacts
- Noise and vibration
- Dust and debris
- Construction staging and parking impacts near the work sites
- Parking impacts
- Crosswalk and sidewalk closures, and detours for people walking and biking
- Roadway closures and detours for vehicle traffic
- Changes in construction schedule due to unforeseen circumstances (i.e., weather, soil conditions, etc.)

STAY INFORMED

Please visit our project website for more information and updates: seattle.gov/transportation/projects-and-programs/safety-first/safe-routes-to-school/broadview-thomson-and-cedar-park-elementary



FUNDING

This project was funded by WSDOT Safe Routes to School Grant, New Sidewalks Neighborhood Greenways and SPU Broadview Partnership CIP.

