

Free Overnight Drayage Truck Parking

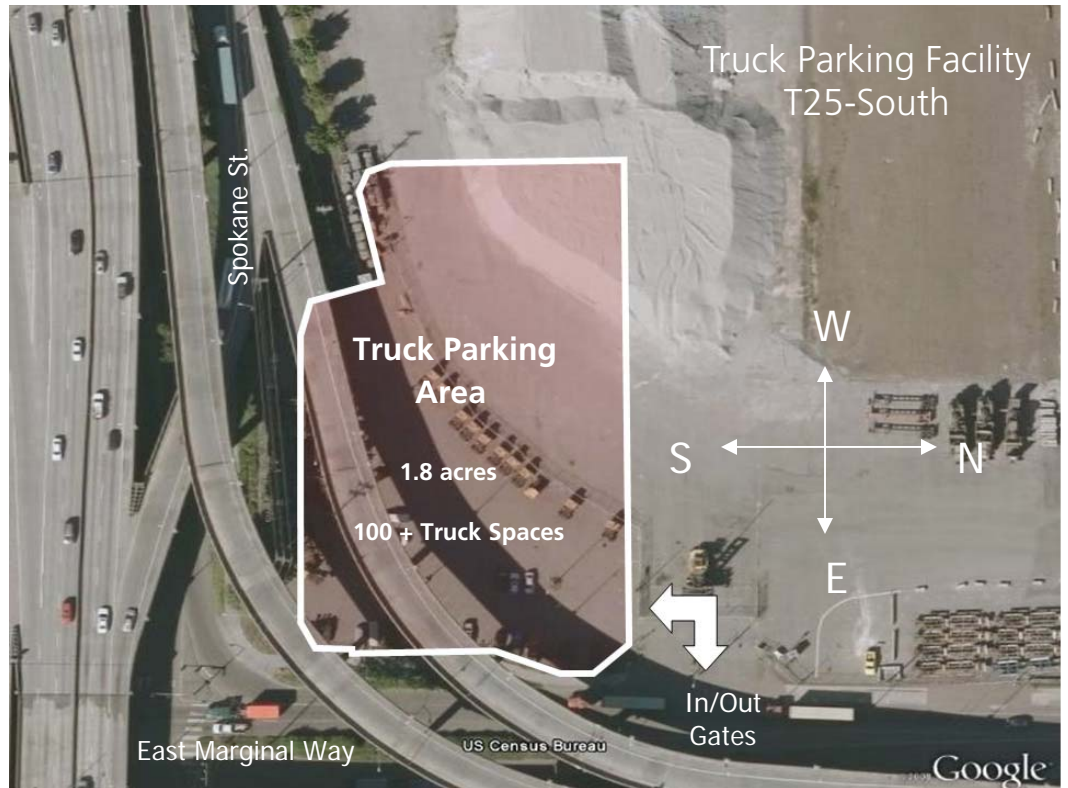
AVAILABLE BEGINNING JULY 1, 2009

PROVIDED BY THE PORT OF SEATTLE FOR TRUCKERS SERVING SEATTLE'S CARGO TERMINALS

Parking for truck cabs only, no chassis or trailers.

Truckers serving Port of Seattle cargo terminals can park their personal vehicles for free during the day, and their trucks at night. The lot will not be a secured facility but will provide free, off-street parking close to Seattle's cargo terminals. Truckers are encouraged to use this facility rather than parking in area neighborhoods. Rules for usage are on the back of this flyer.

QUESTIONS:
Port Public Affairs
206-728-3837



Location:

Terminal 25 South, 3225 E. Marginal Way S., Seattle, WA 98134

Proposed Rules for Truck Parking Facility

Provided as a public service by the Port of Seattle for truck operators who transport cargo to and from Port of Seattle terminals **only**.

1. The Port of Seattle shall not be responsible or liable for any theft, loss, or damage to any personal property or vehicles of User while parked at this lot. User assumes all risk of personal injury when using the lot.
2. Use of the lot is solely for the parking of vehicles. Any personal property that is stored or abandoned will be removed at owner's expense. Parking for chassis or trailers is prohibited.
3. Parking is a privilege extended to users and that privilege can be revoked at any time at the sole discretion of the Port. Parking shall be in designated spots only. Vehicles parked in non-designated spots shall be towed at owner's expense.
4. Sleeping overnight, camping, loitering, or other assembly in the lot is prohibited. Vehicles parked for more than 14 days will be considered abandoned and towed at owner's expense.
5. No vehicle maintenance, including oil changes, shall be performed on this site. Any spill of oils or other fluids must be cleaned up promptly.