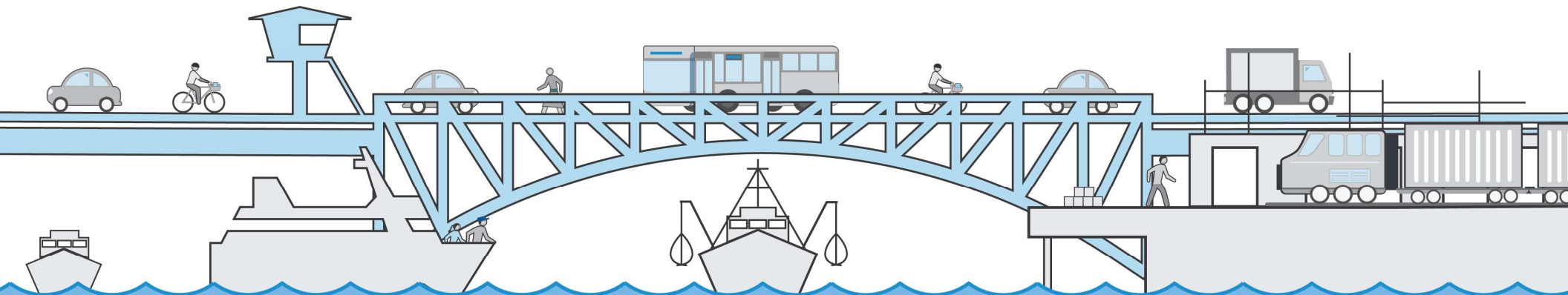


Ballard-Interbay Regional Transportation System

Seattle Freight Advisory Board



Presentation overview

- I. Quick Project Review
- II. Update
 - I. Last SFAB presentation 10/24/19
- III. Scope and outcomes
- IV. Project schedule
- V. Opportunities for public input



Ballard-Interbay Regional Transportation System (BIRT)

The Washington State Legislature asked SDOT to develop a report on how to improve travel for people and goods in Ballard-Interbay.



Photo : Neil Hodges, Flickr

2019 Washington State legislative language

ESHB 1160 – Section 311(18)(b)

“Funding in this subsection is provided solely for the city of Seattle to develop a plan and report for the Ballard-Interbay Regional Transportation System project to **improve mobility for people and freight**. The plan must be developed in coordination and partnership with entities including but not limited to the city of Seattle, King county, the Port of Seattle, Sound Transit, the Washington state military department for the Seattle armory, and the Washington State Department of Transportation.

The plan must **examine replacement of the Ballard Bridge and the Magnolia Bridge**, which was damaged in the 2001 Nisqually earthquake. The city must provide a report on the plan that includes **recommendations to the Seattle city council, King county council, and the transportation committees of the legislature by November 1, 2020**. The report must include recommendations on how to **maintain the current and future capacities** of the Magnolia and Ballard bridges, an overview and analysis of all plans between 2010 and 2020 that examine how to replace the Magnolia bridge, and recommendations on a **timeline for constructing new Magnolia and Ballard bridges**.”

Project partners

An Interagency Team will guide the project.



Project coordination

- **Magnolia Bridge Planning Study & Ballard Bridge Planning Study** (2019/2020)
- **Interbay "Armory" Project** (November 2019)
- **Mayor's Industrial and Maritime Strategy** (Spring 2020)
- **Planning phase for ST3 Ballard to Downtown** (2022)
- **Redevelopment of Port of Seattle's Terminal 91** (Site investigation underway)



Armory site



Cruise Terminal at Pier 91

Scope elements

Review Existing Plans and Previous Studies

- Summarize findings and document guiding assumptions



Forecast and Assess Multimodal Integration

- Forecast future conditions
- Assess traffic, freight, and multimodal strategies



Analyze Impacts & Benefits of Bridge & System

- Conduct social and economic cost/benefits analysis



Bridge Replacement Timeline & Funding Strategy

- Develop timeline and funding approach for replacement of bridges



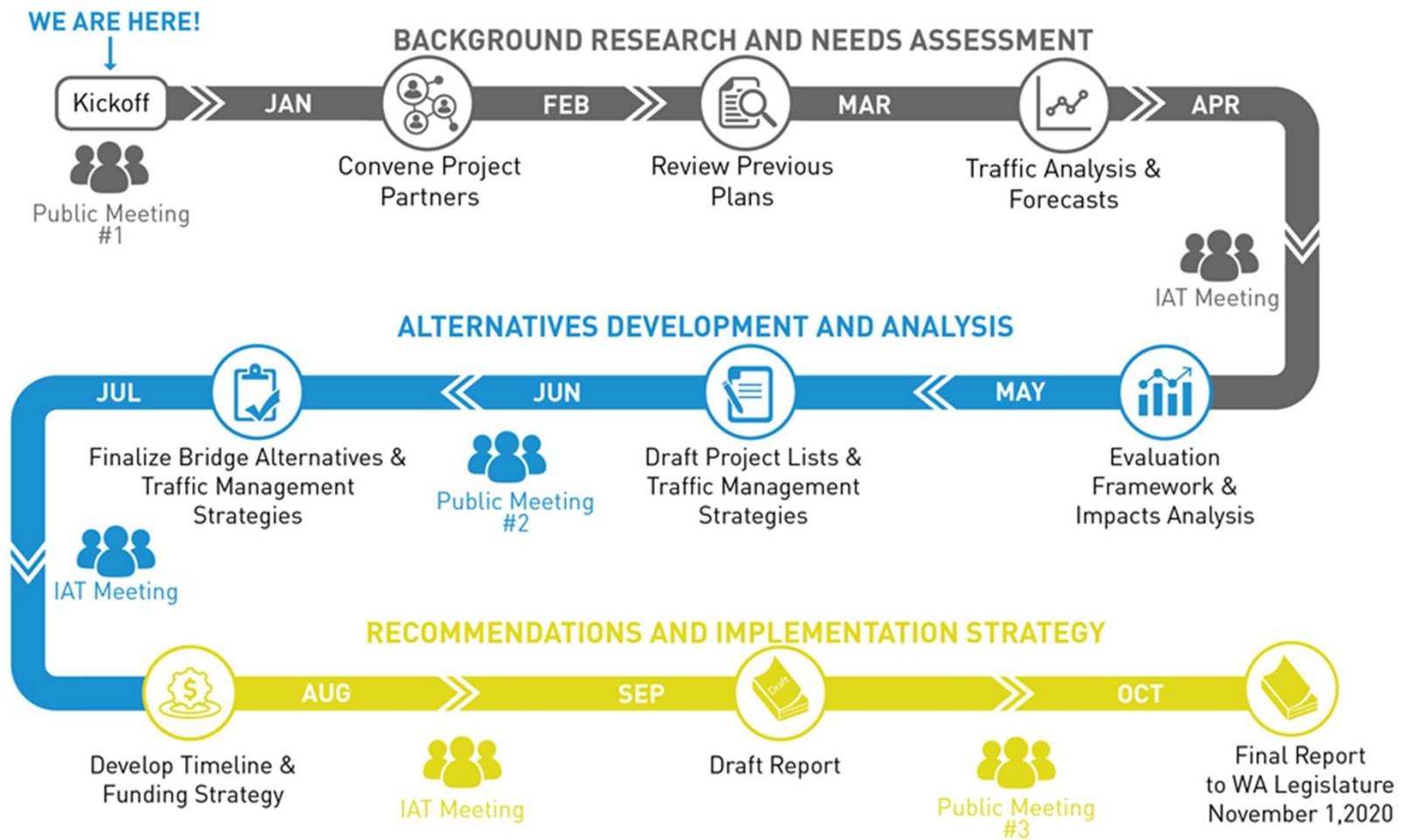
Report to WA Legislature

- Draft in September, submit November 1, 2020



**Public & Key
Stakeholder
Engagement**

Project timeline



Questions?

Diane.wiatr@seattle.gov

www.seattle.gov/transportation/birt



Public engagement and input

- Public Information Plan and Racial Equity Approach
- Project Website & Listserv: www.seattle.gov/transportation/birt
- Public Meetings (Winter, Summer & Fall)
- Public welcome to attend important Interagency Team Meetings
- Invite comment from City of Seattle Boards and Commissions

