

Project Updates

Seattle Freight Advisory Board

8/20/2019

Seattle Department of Transportation



City of Seattle

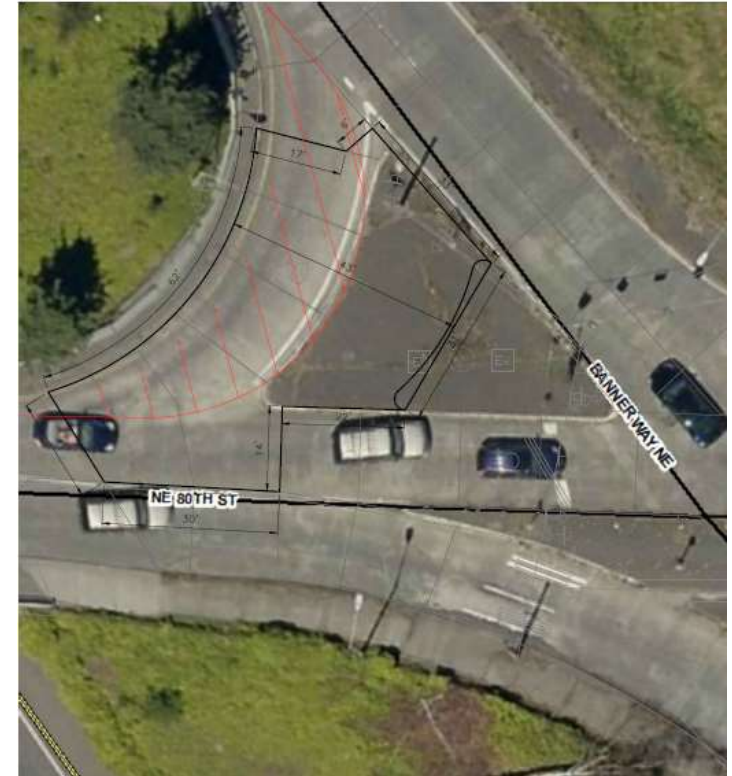
Freight Spot - 2019 Implementation

- NE 80th St at Banner Way NE
- Clay St at Alaskan Way
- NE 50th St at Latona – High Friction Surface Treatment
- Pioneer Square Rechannellization/CVLZ Relocations
- Railroad crossing Inventory/Asset Database

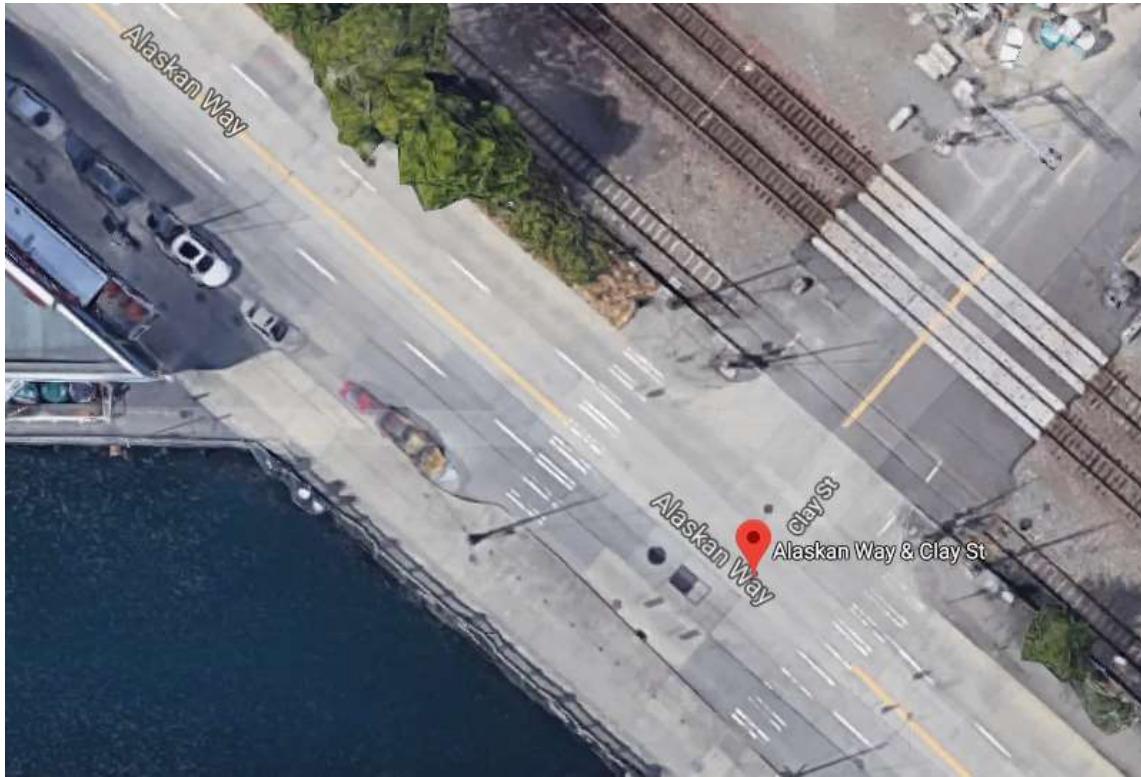


NE 80th St at Banner Way NE

- Cost - \$80K
- Schedule – October 2019



Alaskan Way at Clay St



- Cost - \$280K
- Schedule – Project on hold
- Clay St is currently closed
- Contractor mistakenly cut BNSF loops
- Loops are a special product with long lead times

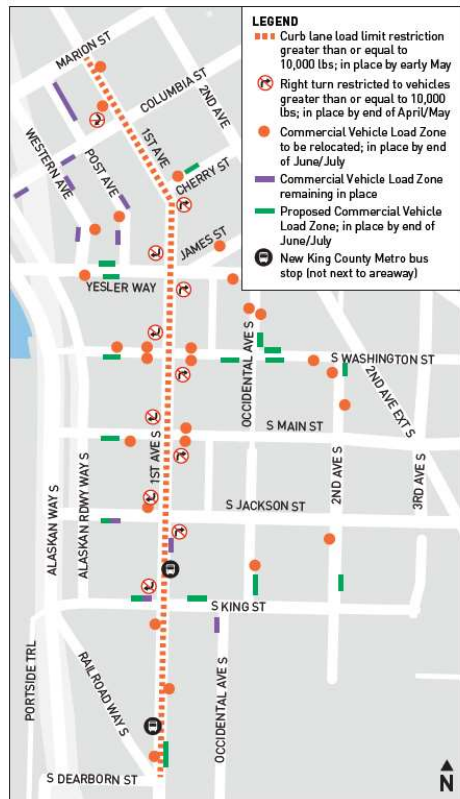
NE 50th St at Latona Ave NE



- Cost - \$50K
- Schedule
 - Included in Greenlake AAC
 - Overall Project Completion in 2021.
 - Crews already working on NE 50th St Repairs
 - Anticipated implementation late Fall 2019.

Pioneer Square Rechan./CVLZ Relocations

PIONEER SQUARE AREAWAY ASSESSMENT AND REPAIR;
PROPOSED LOAD ZONE LOCATIONS



PIONEER SQUARE AREAWAY ASSESSMENT AND REPAIR;
CURB LANE RESTRICTIONS



Completed
Restrictions on 1st Ave
CLVZ Relocations

- Cost - \$100K
- Completed
 - Restrictions on 1st Ave
 - CLVZ Relocations
- Next Phase
 - Restrictions on 2nd Ave, Occidental and other side streets
 - CLVZ Relocations
 - Implement in Late Sep. – Early October
 - Removal & Storage of S Main St. Station

Pioneer Square Rechan./CVLZ Relocations



Railroad crossing Inventory/Asset Database

- Cost - \$120K
- Completed Preliminary Development
 - Asset Database within Hansen
 - GIS Polygons
 - Identified and inspected 400+/- crossings
 - Franchise Agreement Genealogy
- Next Phase
 - Verifying the input data
 - Test databases
 - Rollout is anticipated late Fall

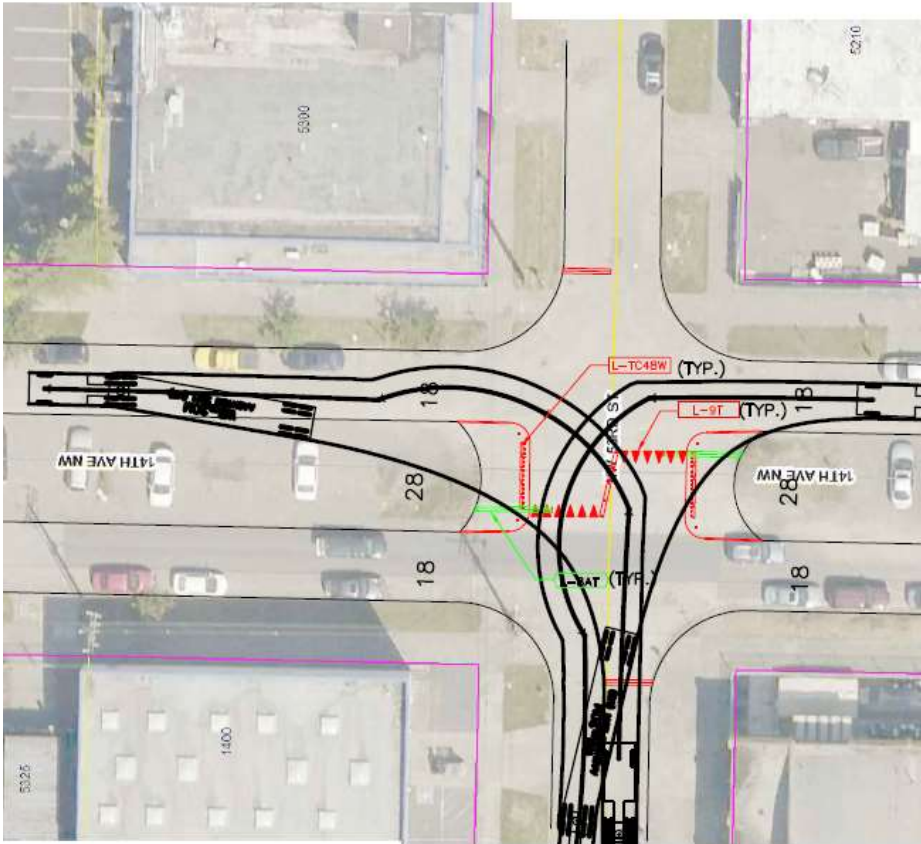


Alaskan Way CLVZ Consideration



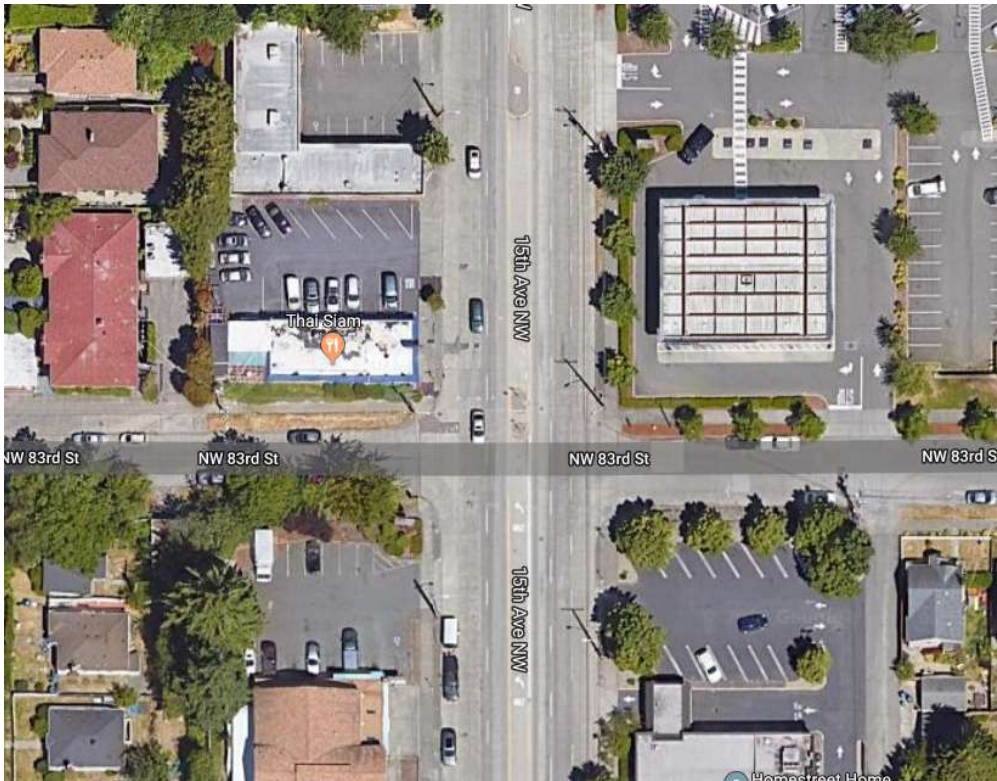
- Trucks parking on sidewalk panels
- Panels between Yessler and Pike
- Cannot carry this load
- Using CV enforcement officers
- Management deciding on other interim measures
 - Exploring converting PLZ, Taxi Cab Stands, Charter Bus Parking as CVLZ from 10P to 5A

14th Ave NW - NW 45th St to NW 65th St



- Markings, signs and posts to formalize operations
- Cost ~ \$100K
- Collector Arterial
 - SU-30 design vehicle
 - Accommodates WB-67 vehicle at 52nd St and 53rd St for Bardahl operations
 - Implementation in September

15th Ave NW at NW 83rd St – Greenway Signal



- NSF project – funding just awarded
- Greenway signalized arterial crossing
- Design has not yet begun

Questions?

Freight Program

Venu.Nemani@seattle.gov / 206-733-9643

Matt.Beaulieu@seattle.gov / 206-615-1911

www.seattle.gov/transportation

