

Aurora Ave N Planning Study

Seattle Pedestrian Advisory Board

June 8, 2022

Brian Dougherty



Seattle
Department of
Transportation

Our Vision, Mission, Values, & Goals

Seattle is a thriving equitable community powered by dependable transportation. We're on a mission to deliver a transportation system that provides safe and affordable access to places and opportunities.

Core Values & Goals:

Equity, Safety, Mobility, Sustainability, Livability, and Excellence.

Project Overview

- Long-range planning study to define future vision and cross sections for 7.6-mile Aurora corridor
- Main focus of project is **pedestrian and bicycle access safety upgrades and transit improvements**



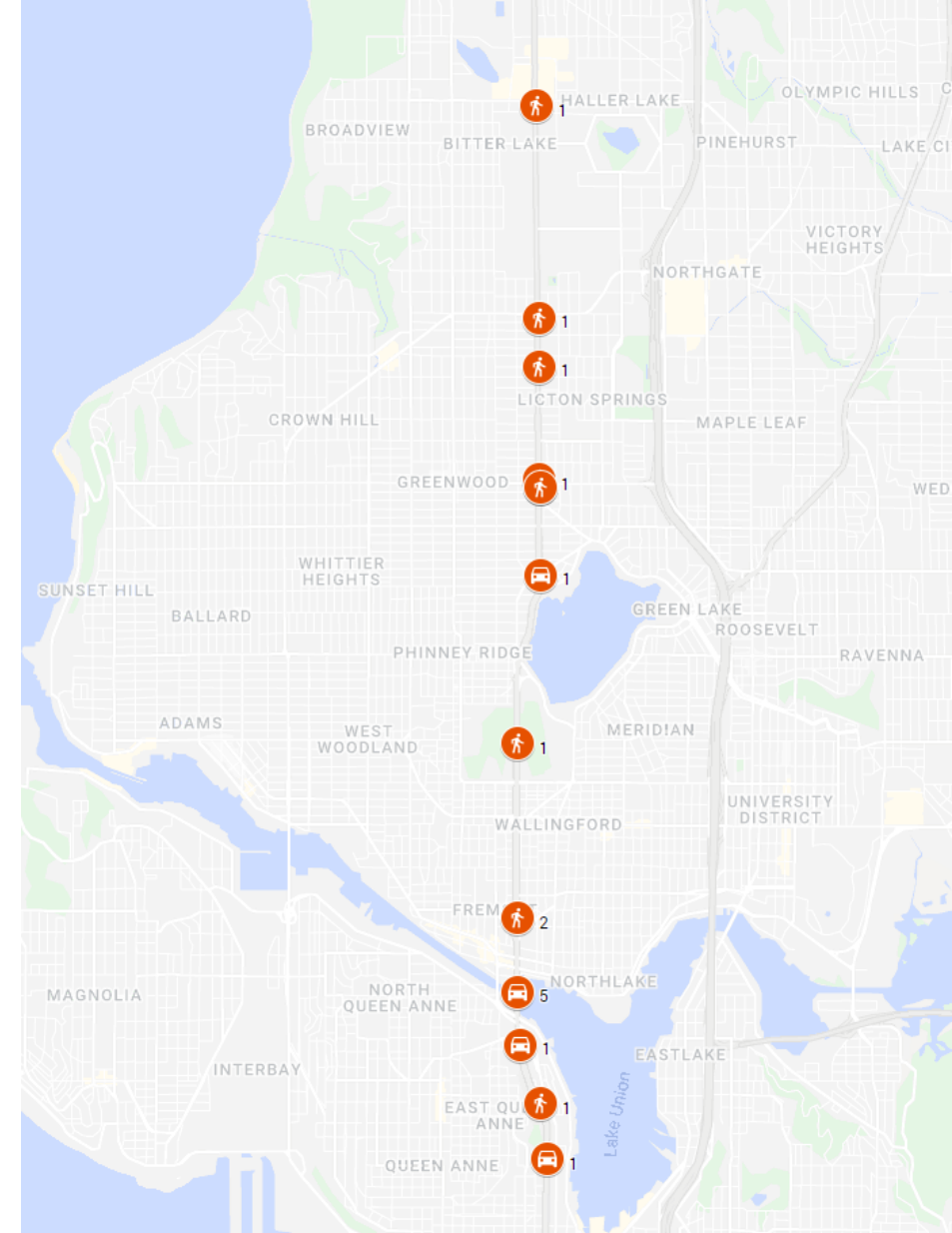
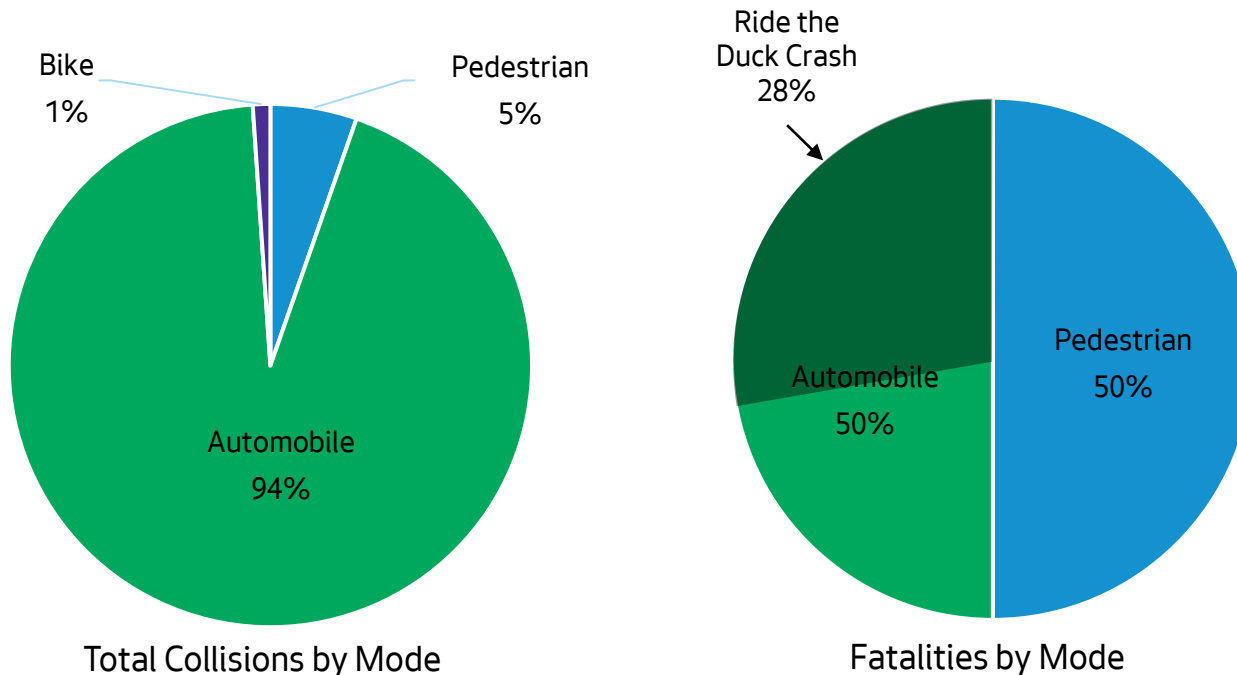
Corridor Challenges and Needs

- Long blocks and gaps between controlled crossings
- High collision corridor
- Inconsistent right of way width
- Sidewalk repair
- Inadequate drainage system
- Pedestrian connections to transit facilities



Collision Fatalities

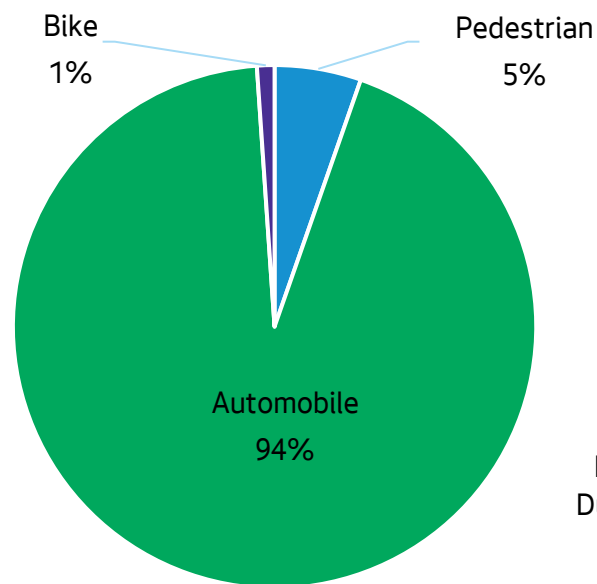
- Aurora is the deadliest street in the city
 - 17% of all traffic fatalities citywide occurred on Aurora
 - Pedestrians were only involved in 5% of all collisions, but were 50% of all fatalities
 - Since the end of the study period in 2019, an additional 8 people have died on Aurora, 6 of whom were pedestrians



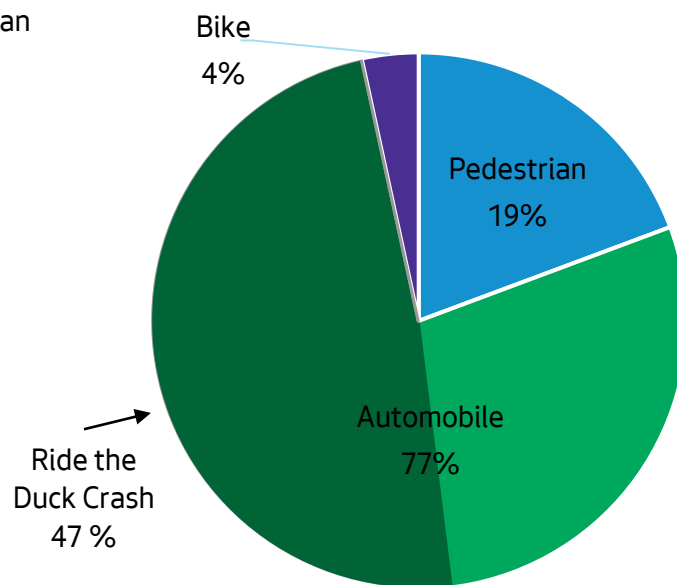
5 Years of Data (1/1/2015 - 12/31/2019)

Collision Serious Injuries

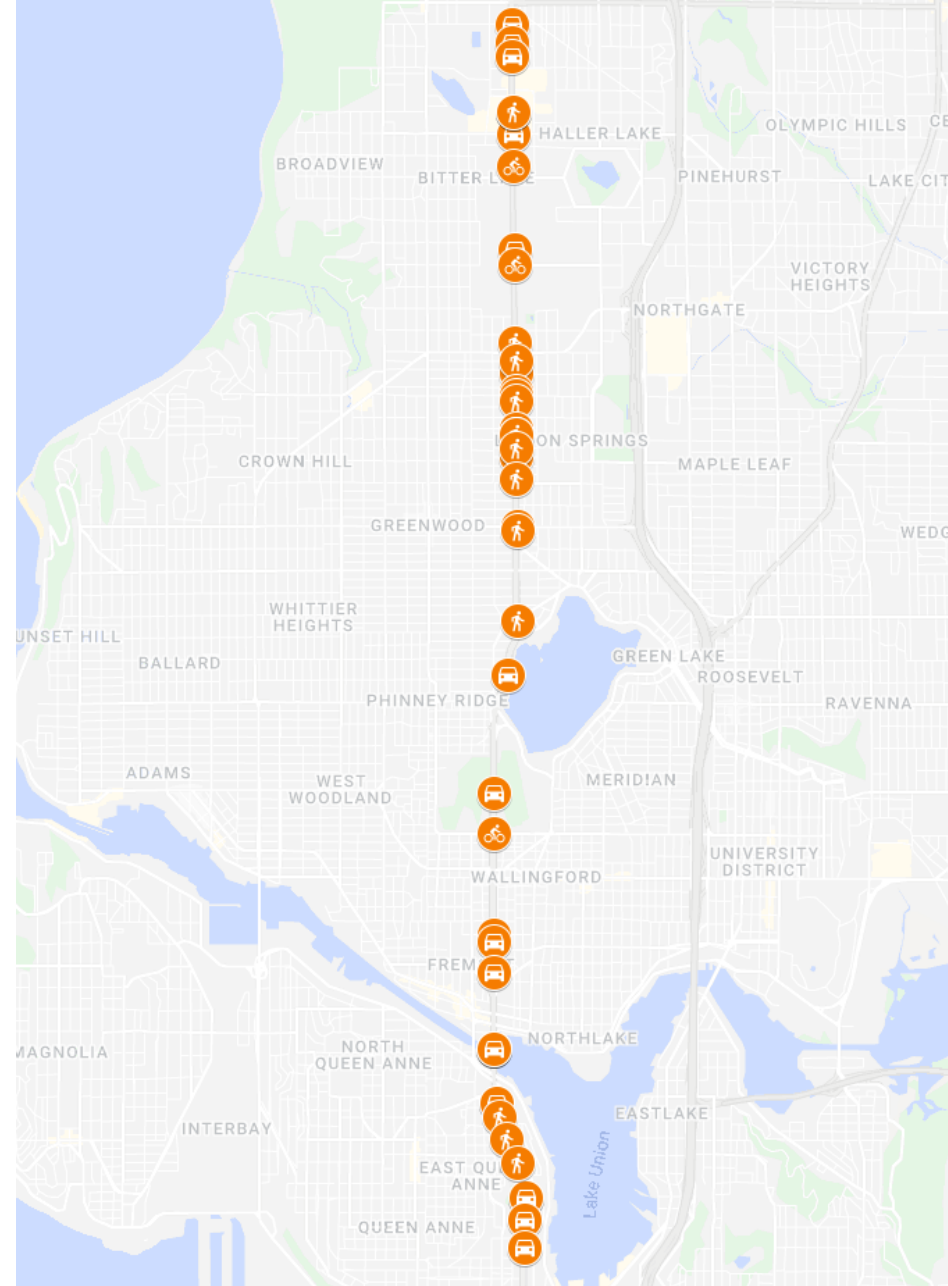
- 45 Collision Resulted in Serious Injuries to 88 people
 - People walking and biking were more likely to be seriously injured



Total Collisions by Mode



Serious Injuries by Mode



Pedestrian Collisions

- 55% occur at intersections
- 45% occur between intersections
- 88% of Pedestrian Fatalities occur between intersections
- Some sections lack sidewalks (survey ongoing)



Photo by Lee Bruch

Previous Efforts

- WSDOT Route Development Plan in 2003
 - Grant from WSDOT to implement
 - Full implementation stalled due to lack of support from business community
- Aurora Traffic Safety Corridor
 - Short-term, low-cost treatments
 - Education and enforcement efforts
- Small-scale spot improvements during recent corridor repaving project



Metro-SDOT Project Coordination

- Closely coordinated with Metro's planned improvements to E Line
 - Metro's highest ridership route
 - Common scope of work and timeline, co-branded materials and engagement process
- Coordination model will result in best alignment of outcomes, resource leveraging, and future funding opportunities

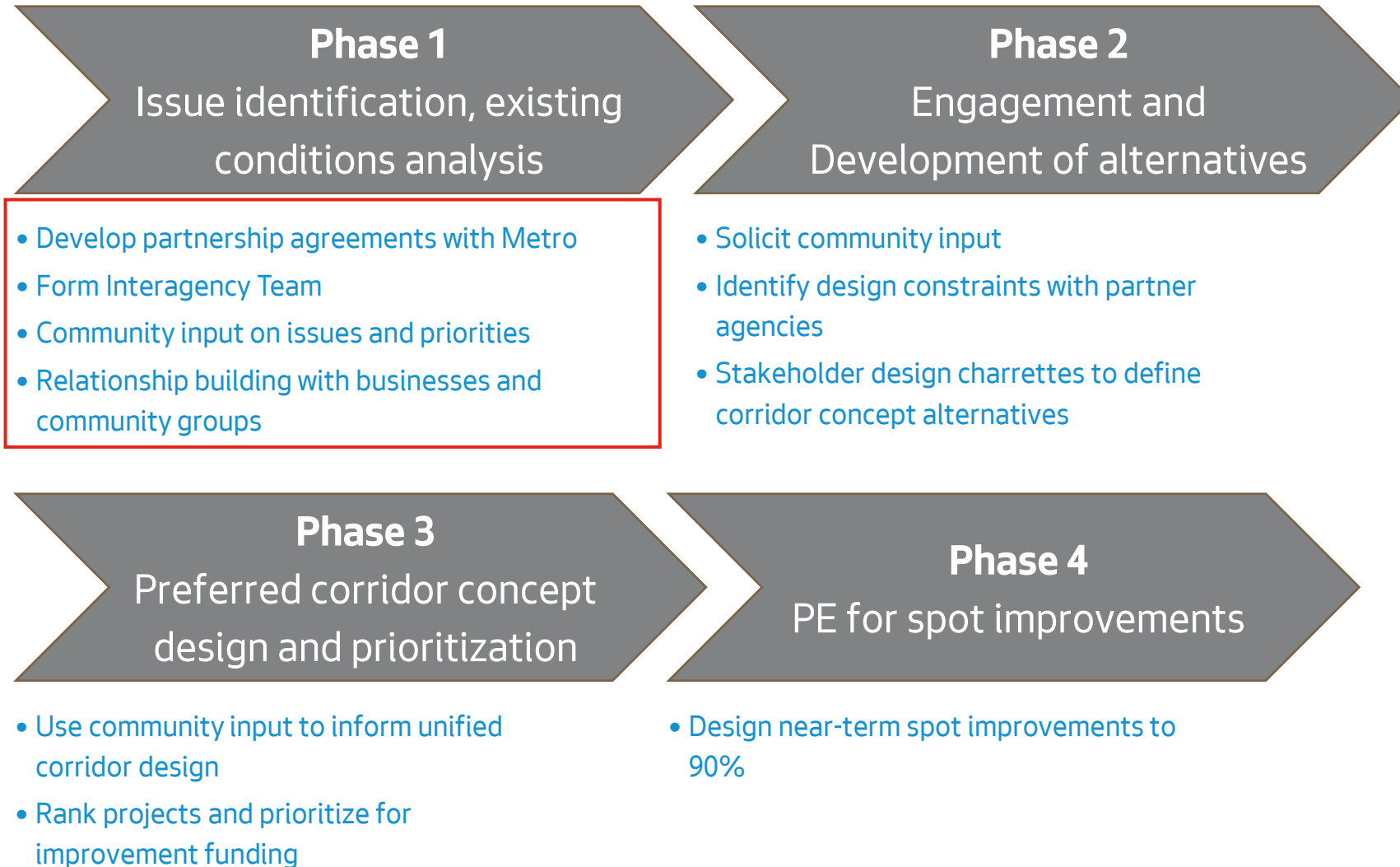


Funding and Budget

- **\$2M** planning project budget
- Budget includes **\$1.5M** WSDOT Ped/Bike Program planning grant
 - Focus of grant is non-motorized transportation upgrades
 - Requirement to reach 90% design on 2-3 ped/bike spot improvements
- **\$50M** from WSDOT for design and construction 2024-2030



Scope and Phasing



Timeline



	2022												2023											
	J	F	M	A	M	J	J	A	S	O	N	D	J	F	M	A	M	J	J	A	S	O	N	D
Phase 1 - Data collection, issue identification																								
Phase 2 Public engagement and development of corridor alternatives																								
Phase 3 Development preferred concept(s)																								
Phase 4 Spot improvement engineering																								

Coordination with Near-Term Projects

- Near-term work on Aurora:
 - Northbound BAT lanes south of Aurora Bridge
 - Green Lake Outer Loop
 - N 41st St Overpass retrofit/removal
 - Aurora Bridge evaluation
- Coordinating traffic modeling efforts with state-funded Aurora Bridge evaluation



Key Interagency Team

- WSDOT

- Partner to define operational assumptions for corridor
- Align with agency goals and corridor needs
- Approve designs and review engineering plans

- Metro

- Partnership and coordination with E Line Expansion Study
- Define transit design objectives to improve rider experience, speed and reliability

- SPU

- Develop drainage model
- Coordinate drainage improvements north of Green Lake
- Potential GSI partnerships



Additional Interagency Coordination

- OPCD

- Partnership opportunity with Aurora Licton Spring UV land use study
- Outreach partnership on land use issues

- Seattle City Light

- Coordination on lighting, utility pole relocations, and signal design

- City of Shoreline

- Coordination on any improvements impacting N 145th St

Questions?

Stay in touch:



Brian.dougherty@seattle.gov



206.684.5124



www.seattle.gov/transportation/

