

A person wearing a dark jacket and a helmet is riding a red bicycle on a bridge. In the background, there is a line of cars waiting at a toll booth. A large steel bridge is visible in the distance. The scene is set on a bridge with a blue-tinted overlay.

# Bicycle Master Plan Overview and Implementation Update

Seattle Bicycle Advisory Board 9.7.2022  
Hallie O'Brien

# Our vision, mission, and core values

**Vision:** Seattle is a thriving equitable community powered by **dependable transportation**

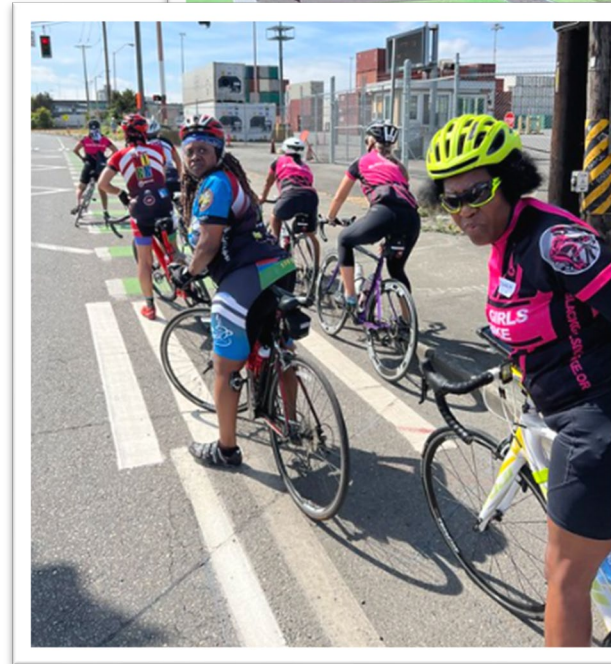
**Mission:** to deliver a transportation system that provides **safe** and **affordable** access to places and opportunities

Committed to **6 core values:**

- Equity
- Safety
- Mobility
- Sustainability
- Livability
- Excellence

# Presentation overview

- Bicycle Master Plan  
Implementation Plan Background
- Projects 2022
- Projects 2023
- 2024 projects and beyond
- Q&A







“Riding a bicycle is a comfortable and integral part of daily life in Seattle for people of all ages and abilities.”

- 2014 Seattle Bicycle Master Plan

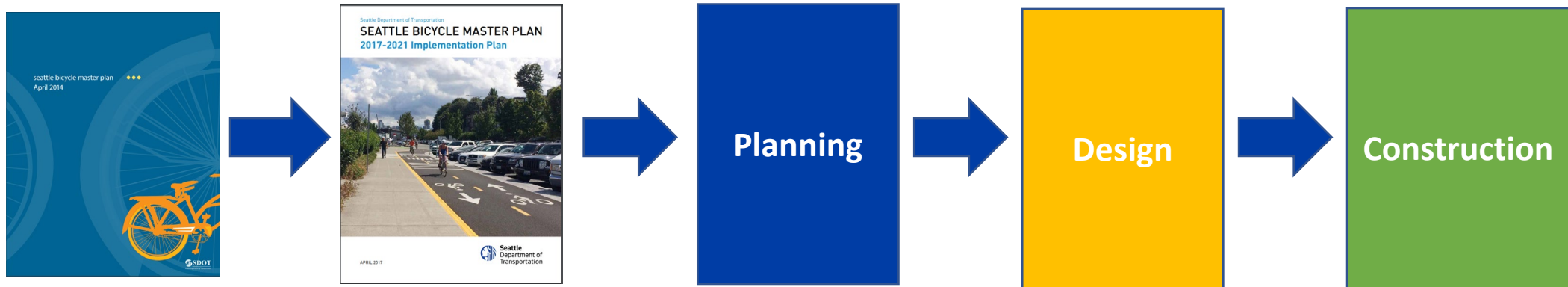


# 2014 Bicycle Master Plan

- **Ridership:** Increase the amount and mode share of the bicycle riding in Seattle for all trip purposes.
- **Safety:** Improve safety for bicycle riders
- **Connectivity:** Create a bicycle network that connects to places that people want to go, and provides a time-efficient travel option
- **Equity:** Provide equal bicycling access for all; through public engagement, program delivery, and capital investment
- **Livability:** Build vibrant and healthy communities by creating a welcoming environment for bicycling.
- [Link to online document](#)



# Life cycle of a project



# BMP Implementation Plan Development



# 2022 Projects

- NODO:
  - 1<sup>st</sup> & Queen Anne
  - 1<sup>st</sup> & Broad
- 15<sup>th</sup> Ave NE – Paving Project
- Eastlake PBL (Fairview to Stewart)
- Green Lake Outer Loop Ph 2
- Melrose Promenade\*
- West Marginal Way PBL\*
- SW Andover st PBL (Yancy)
- Northgate (Light Rail) to Maple Leaf
- Seattle Center to Waterfront Walking & Biking Connection
- SRTS (Viewlands Connection)
- SRTS (Highland Park Connection Ph2B)

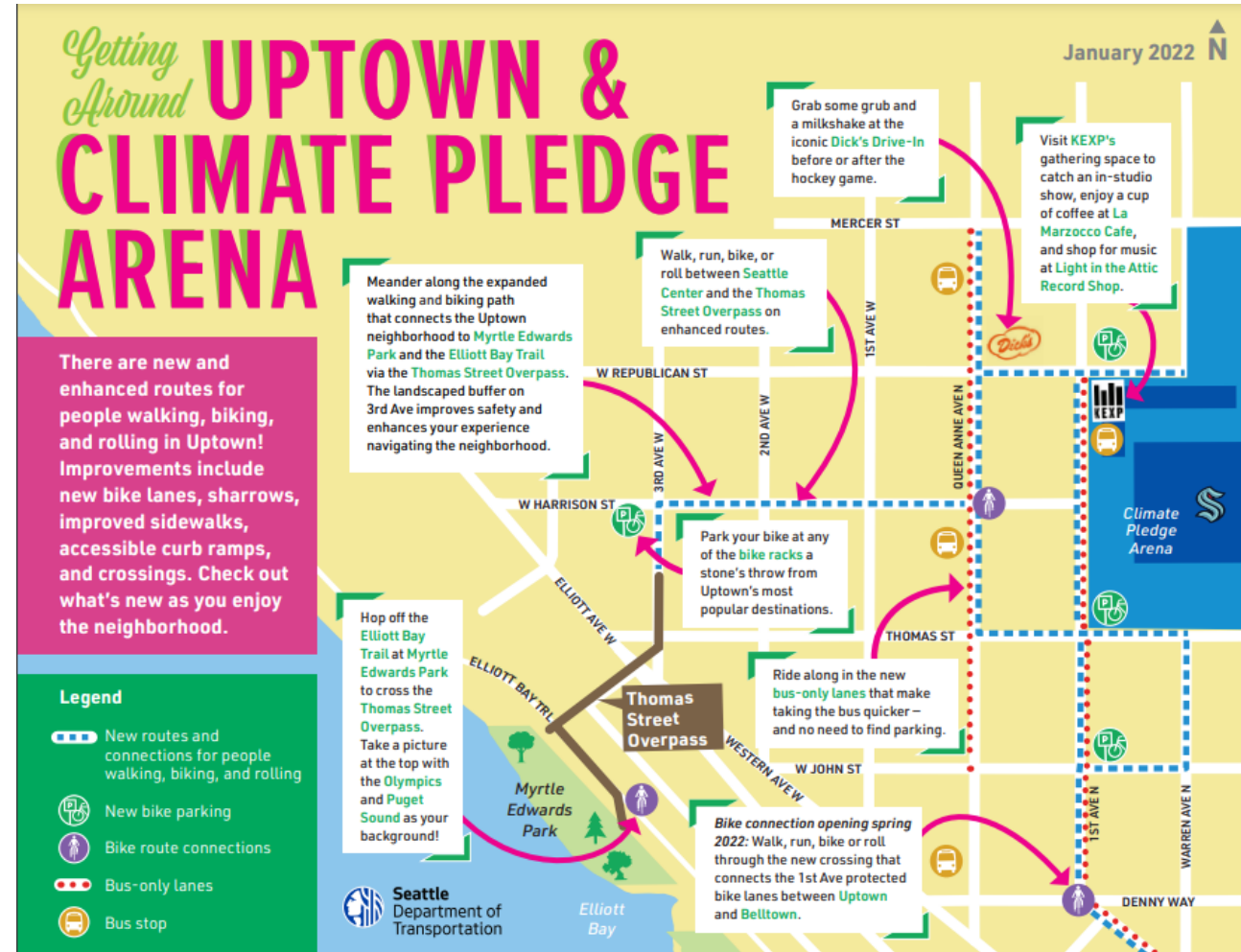


15<sup>th</sup> Ave NE – new PBL's



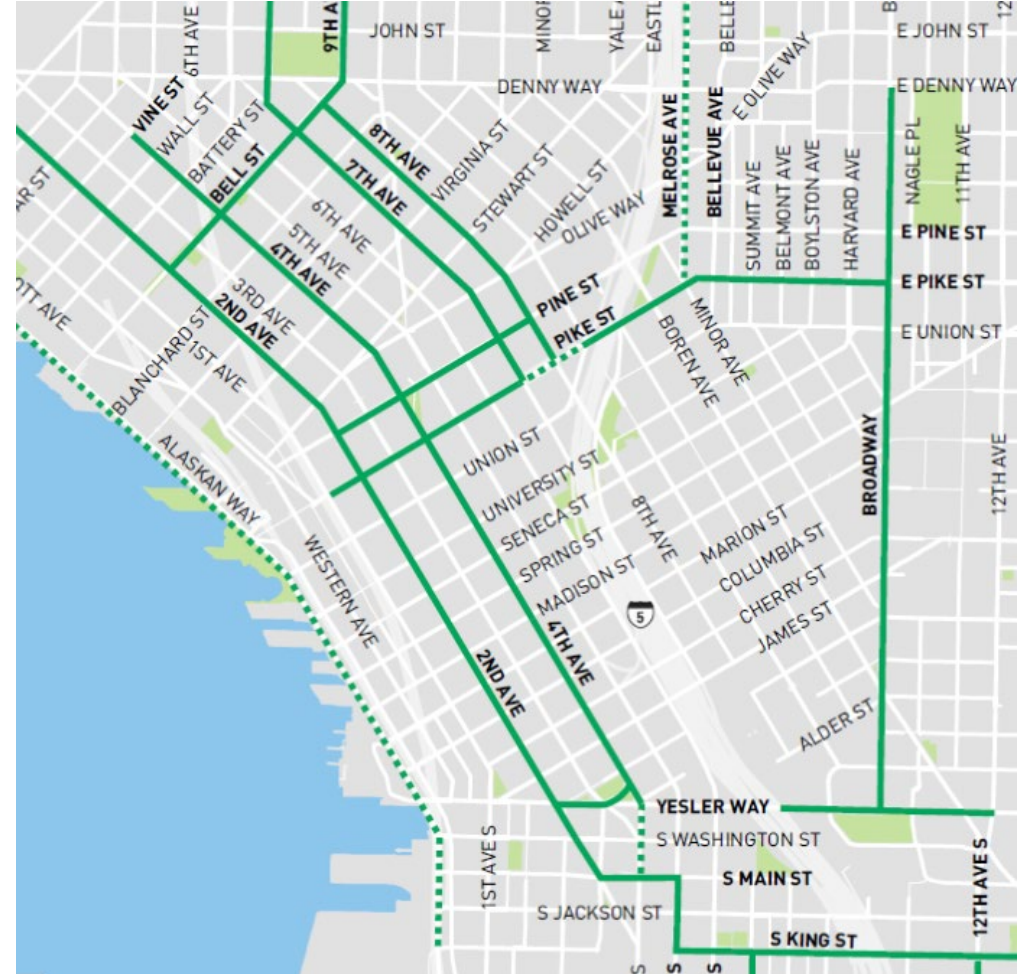
# North Downtown Mobility Plan

- Seattle Center to Waterfront Walking and Biking Connection
- 1st Ave & Queen Anne Ave PBL
- 1st Ave & Broad St PBL (2022)
- [Link to improvements map](#)



# Center City Bike Network

- 4th Ave PBL
- Pike/Pine PBL
- Bell St PBL
- Southend Connection
- King Street NGW
- 8th Ave PBL





# 2023 Projects

## Protected Bike Lane Projects

- Alaskan Way PBL
- Central Ridge Ph 2
- E Marginal Way Phase 1
- 8<sup>th</sup> Ave Permanent
- 4th Ave Phase 4 PBL (Permanent)
- Georgetown to South Park Trail
- Martin Luther King Jr Blvd (Judkins to Rainier)
- West Marginal Way SW Improvements
- 20th Ave NW between Market and Leary

## Neighborhood Greenway Projects

- West Seattle - 35th Ave SW Alternative - Camp Long Connection
- VZ- Interurban to Greenwood Connection
- SRTS (Washington MS Connection)
- Bell Street Park NGW – Healthy Street
- RWS - Highland Park - Riverview NGW Connection



# 2024 and beyond

- Protected Bike Lane Projects
  - Burke Gilman Trail missing line – 2023\*
  - 11<sup>th</sup>/12<sup>th</sup> Ave (43<sup>rd</sup> to 67<sup>th</sup>) -2024
  - Beacon Hill PBL (North Segment – 2024
  - YVYC - 6th Ave NW - 2024
  - Rapid Ride J line (Eastlake PBLs) – 2025
- Projects with Planning/Design Funding
  - Beacon Hill PBL (middle and south segment)
  - SODO Trail
  - Georgetown to Downtown
- Funding Opportunities
  - Construction \$\$ from the Levy pending Council Approval
  - School Speed Traffic Automated Enforcement Funds
  - Grants – PSRC, WSDOT

# Questions?

Hallie.O'Brien@seattle.gov | 206-379-4387  
<https://www.seattle.gov/transportation/BMP>

[www.seattle.gov/transportation](http://www.seattle.gov/transportation)

