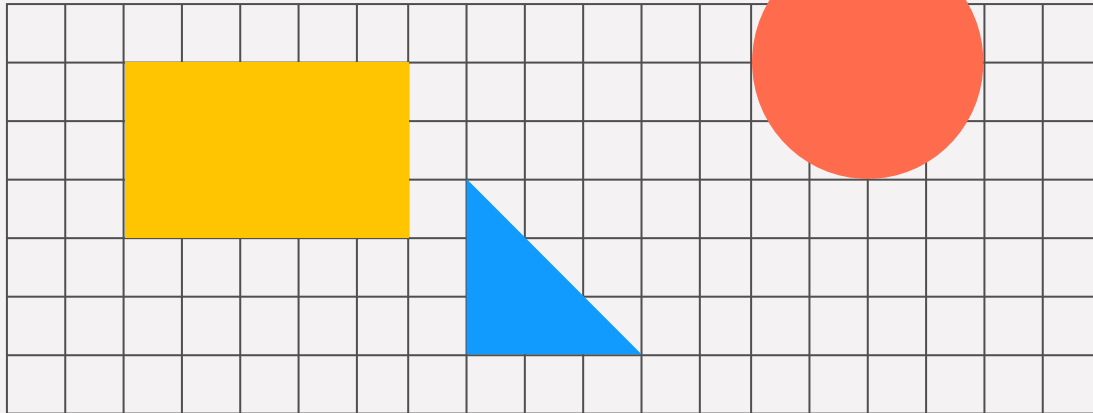
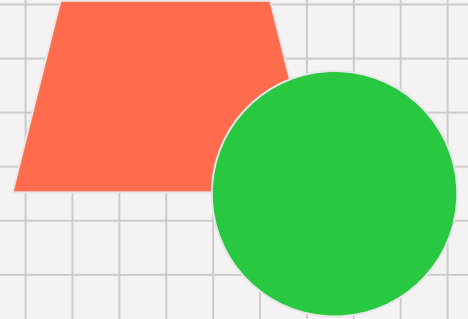


DT>Georgetown
>South Park
(and the gaps in between)

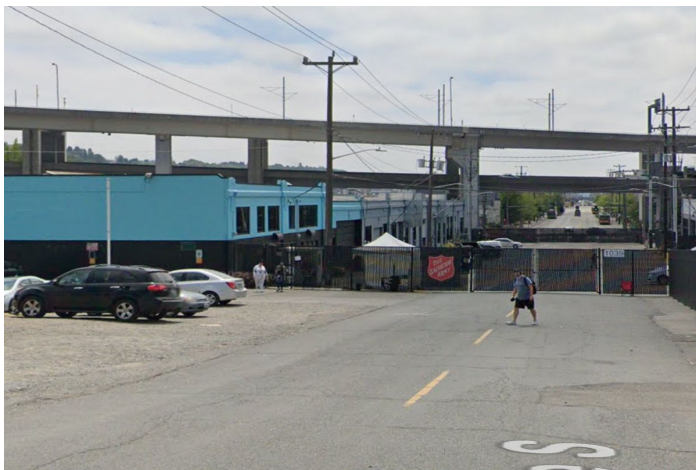


Key Issues



- DT->GT: 6th Ave/Royal Brougham/Airport Way (Salvation Army Closure)
- Gaps between the DT->GT and GT->SP Projects
- Gap in SP between the GRT extension/99 off ramp and the South Park bridge.

DT->GT: 6th Ave/Royal Brougham



Main Concern:

How will this connection be made without opening 6th?

Key Stakeholders:

- Salvation Army
- City of Seattle
- King County
- Urban Visions (Land owner)

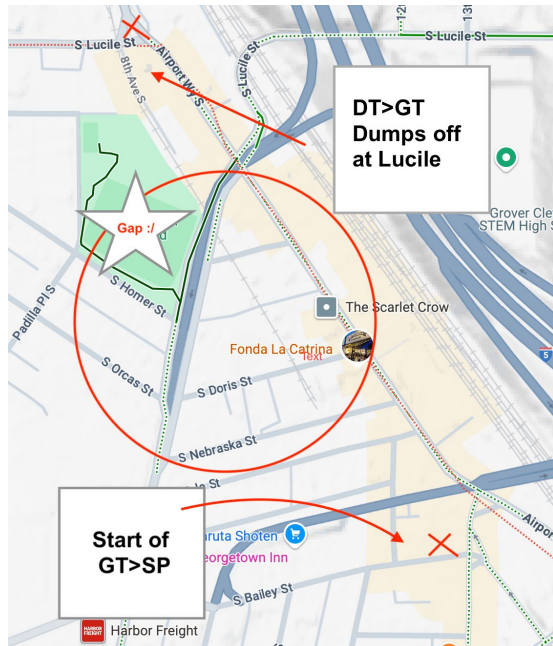
DT->GT: 6th Ave/Royal Brougham



Questions:

- What happens if this does not re-open? What's the alternative?
- Is it possible for it to be opened to just bikes/peds?
- What's the safest for vulnerable population of folks experiencing homelessness?

DT>GT - GT>SP Gap



**Is there a safe route
Through GT?**

We'd argue... no?

Stakeholders:

- SDOT/City
- Rob Saka (D1)

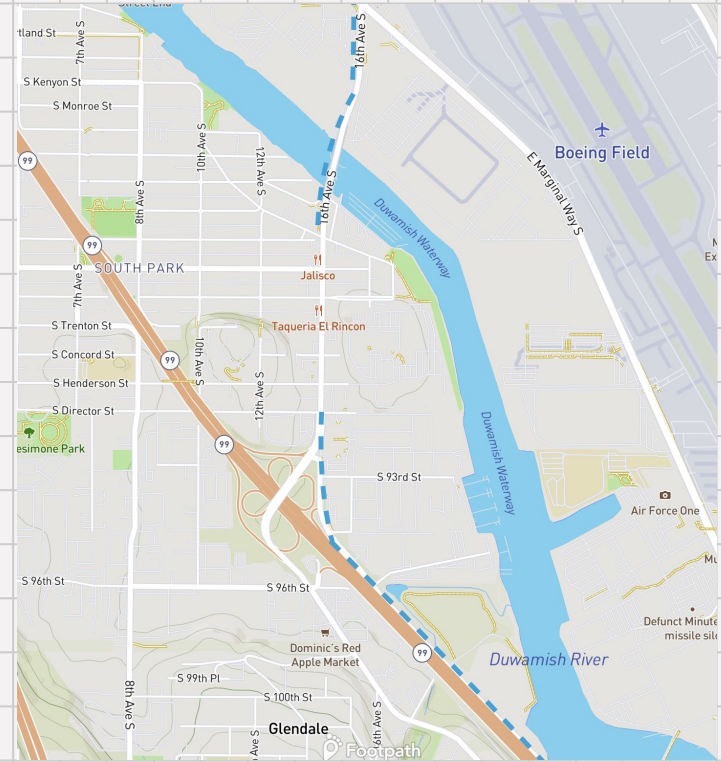
Potential South Park Gap

Georgetown to South Park Project will connect to the north end of South Park.

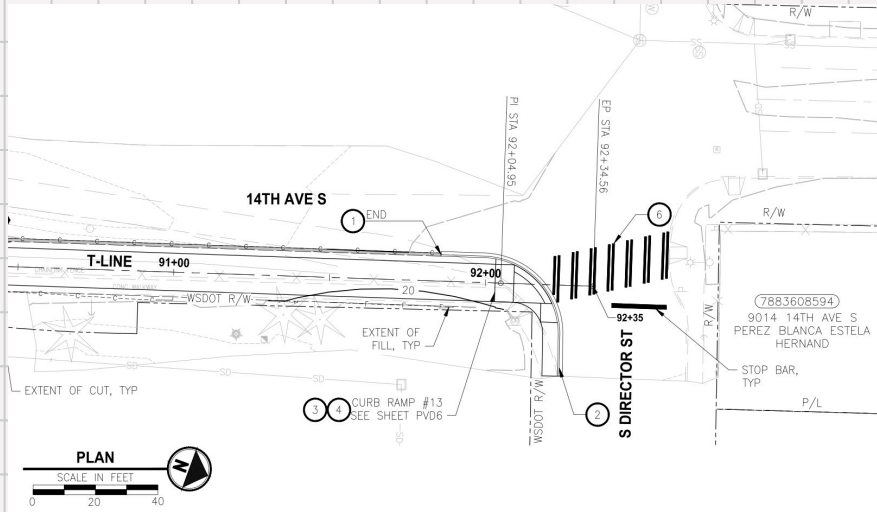
Green River Trail Extension will connect to the south end of South Park.

Existing Duwamish Trail is located to the northwest.

How will these trails connect within South Park?

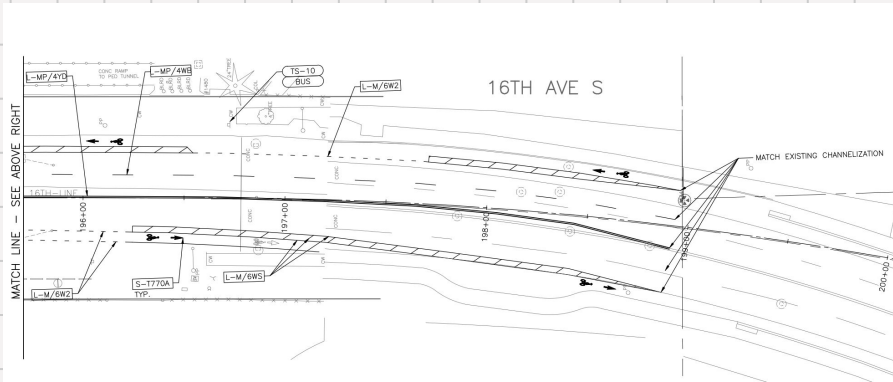


Future Green River Trail Connection



<https://kingcounty.gov/en/dept/dnrp/nature-recreation/parks-recreation/king-county-parks/capital-projects/green-river-trail-north-extension>

Future SP to GT Connection



North end
of bridge



South end
of bridge