



# Q2 2023 Levy to Move Seattle Report

Levy Oversight Committee  
October 3, 2023

Serena Lehman and Kalen Carney, SDOT

# Key Takeaways

- SDOT completed numerous achievements in Q2 2023, thanks to the Levy to Move Seattle
- \$56.9M in investment enabled:
  - Stronger bridges
  - More, and more visible, crosswalks
  - An expanded bike network
  - A new traffic signal, and maintenance on other signals
  - Completion of two more community-requested projects
  - Safer and more accessible transit
  - Smoother sidewalks
  - And more

# Reminder: Levy Categories



Provide safe and accessible routes connecting schools, transit hubs, and other destinations.



Reduce the backlog of maintenance and repair work along major arterials and the busiest Seattle streets.



**Enhance transportation choices**  
throughout the network

# Q2 2023 Levy to Move Seattle Summary



Seattle  
Department of  
Transportation



Highlights transportation projects and services funded in part or in full by the voter-approved Levy to Move Seattle. Performance and financial summaries are provided for all 30 Levy programs through the [interactive, online dashboard](#), which is updated quarterly.

Invested **\$56.9 million (M)** in Levy projects during the second quarter of 2023.



**4**

Projects completed to make it safer to walk, roll, and bike to school



**3**

Lane-miles repaved



**116**

Bridge spot repairs completed



**3**

Stairways rebuilt



**10**

Trees planted, 856 trees trimmed, 466 areas of landscaping maintained, and 191 vegetation obstructions removed



**1,363**

Crosswalks and 32 lane-miles of arterials repainted



**2+**

Miles added to our bicycle network



**70**

Traffic signal diagnostic evaluations and 308 preventative maintenance projects



**2+**

Miles added to our Intelligent Transportation Systems network



**14**

Transit spot improvements made



**2**

Blocks of new sidewalks built



**3**

Bicycle spot safety projects completed



**2,793**

Sidewalk repairs completed totaling 12 blocks of sidewalk



**125**

ADA curb ramps built



Extensive safety improvements downtown, on 1st Ave S, along Aurora Ave N, 4th Ave S, and continued design of traffic calming improvements near Seward Park



**Completed** advance potholing for the water main on East Marginal Way



**Completed** the South Park Drainage Partnership project



**Installed** a new signal, and made four traffic spot improvements



**Completed** improvements on the Route 7 project reached 100% design of the Route 48 project, hosted design workshops to develop concept design alternatives for the Aurora Ave N corridor, and more



**Completed** construction on the 51st Ave S and Renton Ave S Traffic Safety Enhancements and the Andover and Dakota Pedestrian Safety Enhancements projects



**Completed** a lane extension to streamline freight movement on S Spokane St at the SB SR-99 off-ramp



Seattle  
Department of  
Transportation

# Safe Routes

- Continued **Safety Corridor projects** downtown on 1st Ave S and along Aurora Ave N; installed improvements on 4th Ave S between S Holgate St and S Massachusetts St; continued design of traffic calming improvements near Seward Park
- Completed **4 Safe Routes to School projects** near View Ridge Elementary, Wing Luke Elementary, Rainier Beach High School, and John Muir Elementary School
- **Repainted** 1,363 crosswalks and 32 lane-miles of arterials
- Installed a double half **traffic signal** on 12th Ave SW and SW Holden St, and made **four traffic spot improvements**



*Installing a median on 4th Ave S and S Massachusetts St.*



*One of three new all-way stops near John Muir Elementary School*



*Crosswalk remarking on Fairview Ave E*

# Safe Routes

- Added **2+ miles to our bicycle network**: protected bike lanes on West Marginal Way SW and on Melrose Ave E, and neighborhood greenway connections from West Seattle to Camp Long and Interurban to Greenwood
- Completed **2,793 sidewalk repairs** totaling 12 blocks of sidewalk
- Built **125 ADA curb ramps**
- **Completed construction** on the 51st Ave S and Renton Ave S Traffic Safety Enhancements and the Andover and Dakota Pedestrian Safety Enhancements **Neighborhood Street Fund** projects



Before (left) and after (right) of sidewalk repair on 4th Ave S & S Royal Brougham Way.



New protected bike lane on West Marginal Way



51st Ave S and Renton Ave S Traffic Safety Enhancements project

# Maintenance and Repair

- **Repaved ~3 lane-miles** including on N 46th St, in South Park, and on SW Alaska St, Myers Way S, Beacon Ave S, S Royal Brougham Way, Sand Point Way NE, and 3rd Ave
- Completed **116 bridge spot repairs**
- **Completed design** of the 15th Ave NE/NE 105th St Bridge and 15th Ave NW/Leary Way Bridge seismic reinforcement projects
- **Prepared to advertise** for construction for the Admiral Way N, Admiral Way S, and McGraw St Bridge seismic reinforcement projects



Repaving on N 46th St

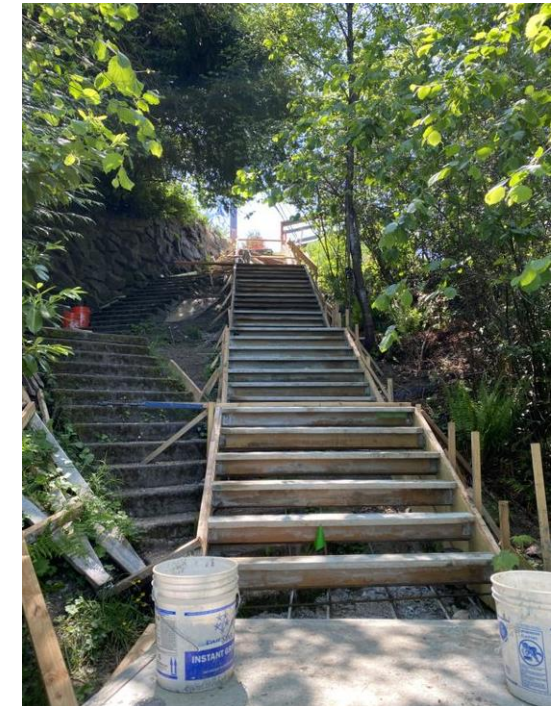
# Maintenance and Repair

- **Continued planning studies** on Admiral Way Bridge N and S bridges and University Bridge N Approach



One of numerous areas improved as part of the South Park Drainage Partnership project: 5th Ave S & S Holden St

- **Rebuilt 3 stairways** - at Princeton Ave NE, S Morgan St, and California Dr SW
- **Planted 10 trees, trimmed 856 trees, maintained 466 areas of landscaping,** and removed 191 vegetation obstructions to ensure clear sightlines and safe travel in the right-of-way
- Completed the **SPU South Park Drainage Partnership** project, including repaving, adding new sidewalks, installing drainage infrastructure, and planting new trees in South Park as part of a partnership with Seattle Public Utilities to reduce flooding



Stairway at California Pl SW under construction.



# Congestion Relief

- **Installed improvements** on several King County Metro bus lines including Route 7 and Route 44
- **Hosted design workshops** to develop concept design alternatives for the Aurora Ave N corridor
- **Continued major construction** on the Madison RapidRide G Line
- **Continued design work** for the Roosevelt RapidRide J Line and Route 40 projects
- Completed **70** traffic signal diagnostic evaluations (inspect signal components), and **308** preventative maintenance projects on signals
- Added **2+ miles** to our **Intelligent Transportation Systems network** on NE 50th St, Rainier Ave S, and the Waterfront
- Made **14 transit spot improvements** to help people access bus stops and ride transit more safely and comfortably



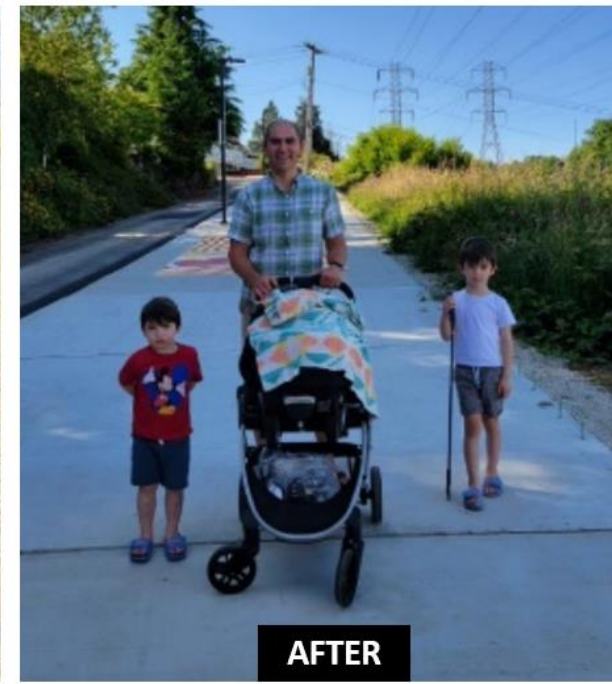
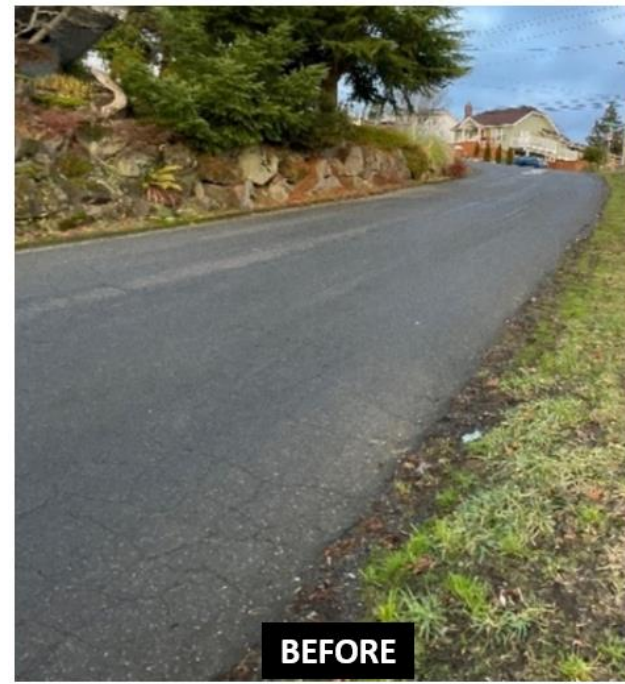
*Improved crossings on Rainier Ave S as part of Route 7 work.*



*Repaired and improved bus zone on California Ave SW and Admiral Way N.*

# Congestion Relief

- Built **2 blocks of new sidewalks** in partnership with the Safe Routes to School program near Wing Luke Elementary
- **Continued construction** on walkways on NW 132nd St and SW Kenyon St, and a stairway on Hiawatha Pl S
- Made **12 crossing improvements** including 3 new crosswalks
- Completed **3 bicycle spot safety projects**: on the Chief Sealth Trail, Duwamish River Trail, and at the Green Lake Park South Parking Lot
- Completed advance potholing for the water main on **East Marginal Way** and worked on the water main lay plan for approval by Seattle Public Utilities
- Completed **a lane extension** to streamline freight movement on S Spokane St at the southbound SR-99 off-ramp



Before (left) and after (right) one section of the new sidewalk on S Kenyon St.



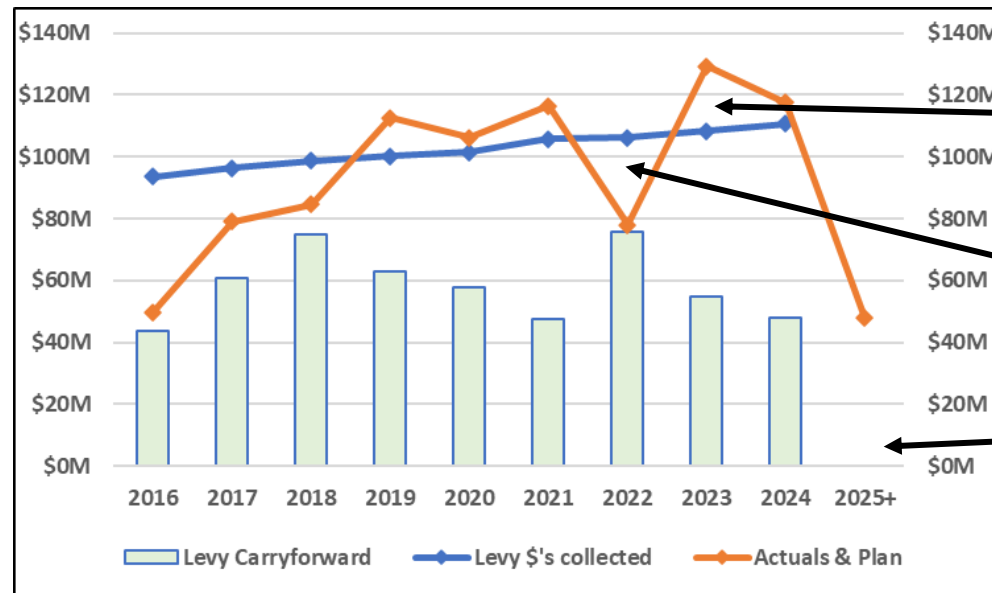
Potholing for a water main on East Marginal Way S.

# Reminder: Budget vs. Spend Plan

## Spend Plan $\neq$ Budget

- Budget is the funding available for a program during the year
- Spend Plan is how much of the funding we expect to use throughout the year
- In Capital Improvement Programs (CIP), unspent budget is available the following year—we call this "carryforward," and it is captured in the following year's spend plan

Levy Fund - Carryforward Budget Example



Revenues < Expenses = Decreases carryforward budget

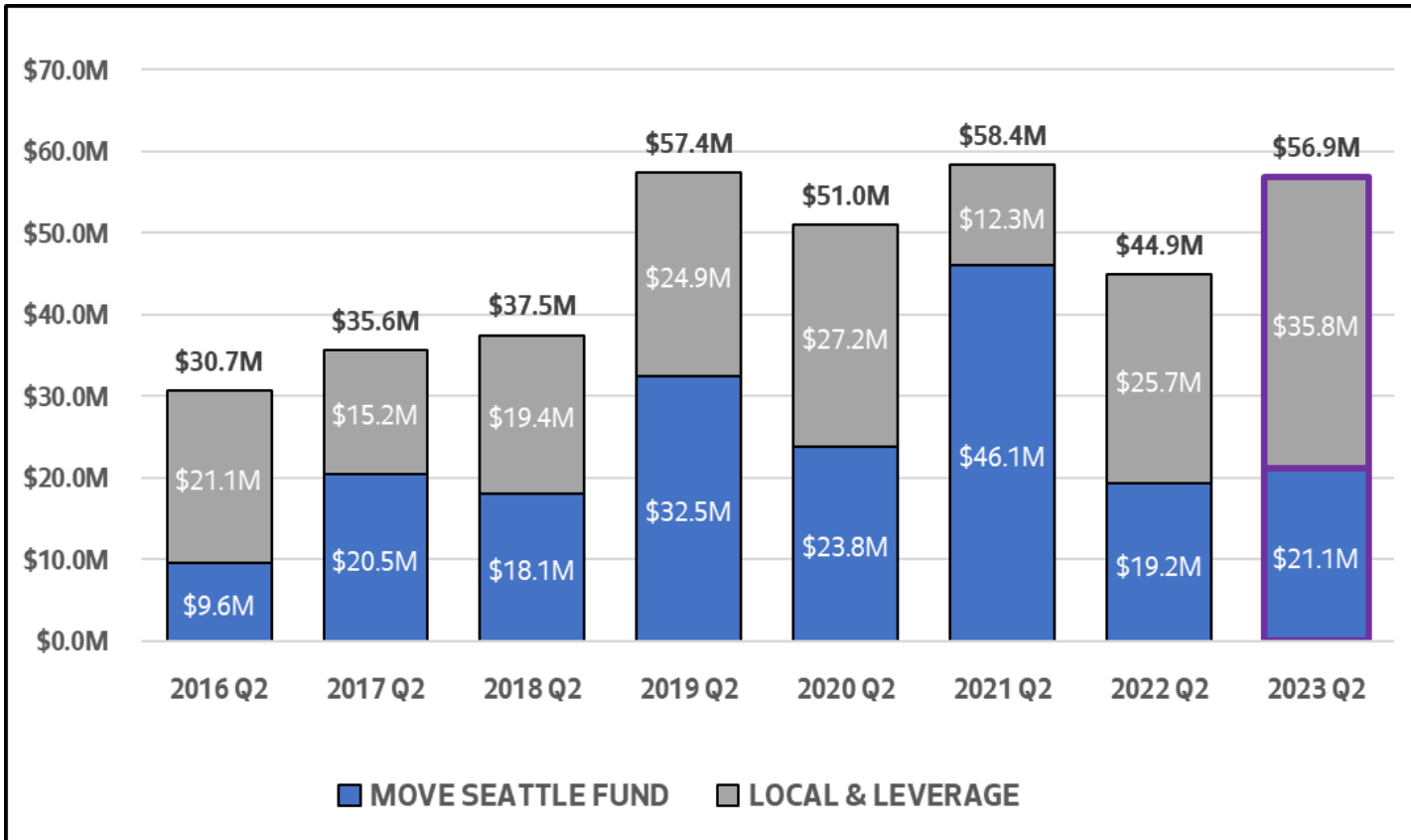
Revenues > Expenses = Increases carryforward budget

Carryforward reaches \$0 when all projects are complete.

Note: Figures for illustrative purposes only.

# Financial Summary - Q2 2023

Invested \$21.1M of Levy to Move Seattle funds and \$56.9M across all funds on Levy deliverables



## Spending by Category

**SAFE ROUTES** **\$17.9M**

**Top program spending**

04. Transportation Operations	\$2.6M
05. Bicycle Safety	\$3.9M
07. Curb Ramps & Crossings	\$4.6M

**MAINTENANCE & REPAIR** **\$7.5M**

**Top program spending**

11. Bridge Repair Backlog	\$1.5M
12. Bridge Seismic	\$1.4M
16. Tree Planting & Trimming	\$1.6M

**CONGESTION RELIEF** **\$31.4M**

**Top program spending**

18. Multimodal Improvements	\$21.4M
19. Traffic Signal Improvements	\$2.5M
21. Transit Spot Improvements	\$1.7M
25. New Sidewalks	\$3.4M

# Questions?

From the entire SDOT Team:  
**Thank you!**

