

Q1 2022 Levy to Move Seattle Report

Q1 2022 Highlights

Basic Maintenance

- 12 crossing improvements
- 20 paving spot improvements (photo on next page)
- 9 transit spot improvements
- Over 7,200 sidewalk spot improvements (left pictures)
- Planted 221 and trimmed 700 trees; most in Highland Park (right picture), South Park & Georgetown



**Paving Spot
Improvement
before/after example**

**SW 106th St between Seola Beach Dr
SW & 32nd Ave SW**



Q1 2022 Highlights

Vision Zero:

- Made progress on safety corridor projects on Lake City Way, Sand Point Way NE, and 15th Ave S
 - Included installing a new signal at NE 74th St and Sand Point Way NE (shown at right)



Q1 2022 Highlights

Safe Routes to School

- Three Safe Routes to School projects
 - Crossing improvement at N 45th St & Woodlawn Ave N that serves Lincoln High School students
 - Street trees in the Martin Luther King Jr. Elementary school zone
 - Pedestrian railing for Concord Elementary School (shown at right)



Q1 2022 Highlights

Bicycle Safety

- About $\frac{3}{4}$ mile of new protected bike lanes (PBLs) that support mobility around the new Climate Pledge Arena and the Uptown neighborhood
 - 1st Ave N & Queen Anne Ave N
 - 1st Ave & Broad St (which forms a connection to the 2nd Ave PBL) (shown at right)



Q1 2022 Highlights

Neighborhood Street Fund

- Completed NE 65th St Pedestrian Safety Enhancements project (one intersection shown at right)
- Started construction on Andover and Dakota Pedestrian Safety Enhancements

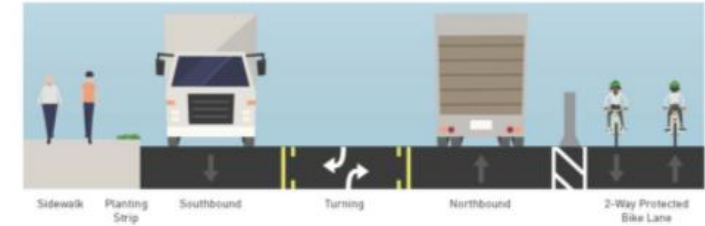


Q1 2022 Highlights

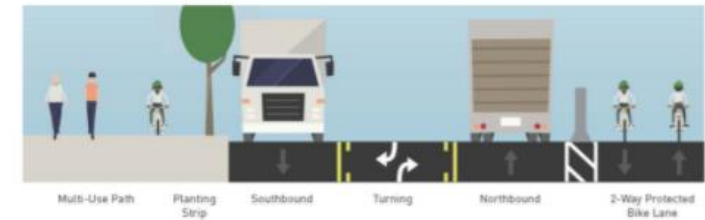
East Marginal Way

- East Marginal Way S is one of city's busiest freight and bike corridors (lower right)
- Project will improve safety & reliability by rebuilding the roadway to accommodate larger/heavier truck traffic, making traffic signal modifications, building a PBL, adding safer ways to cross the street, rebuilding sidewalks, and more.
- North Segment of the project, from S Atlantic St to S Spokane St, reached 90% design in Q1 (top right)
 - 100% design planned for Q2

S Holgate St to S Horton St, looking north
2-way protected bike lane on east side of street



S Horton St to S Spokane St, looking north
Multi-use path on west side of street; 2-way protected bike lane on east side of street



Q1 2022 Highlights

Bridge Seismic Program

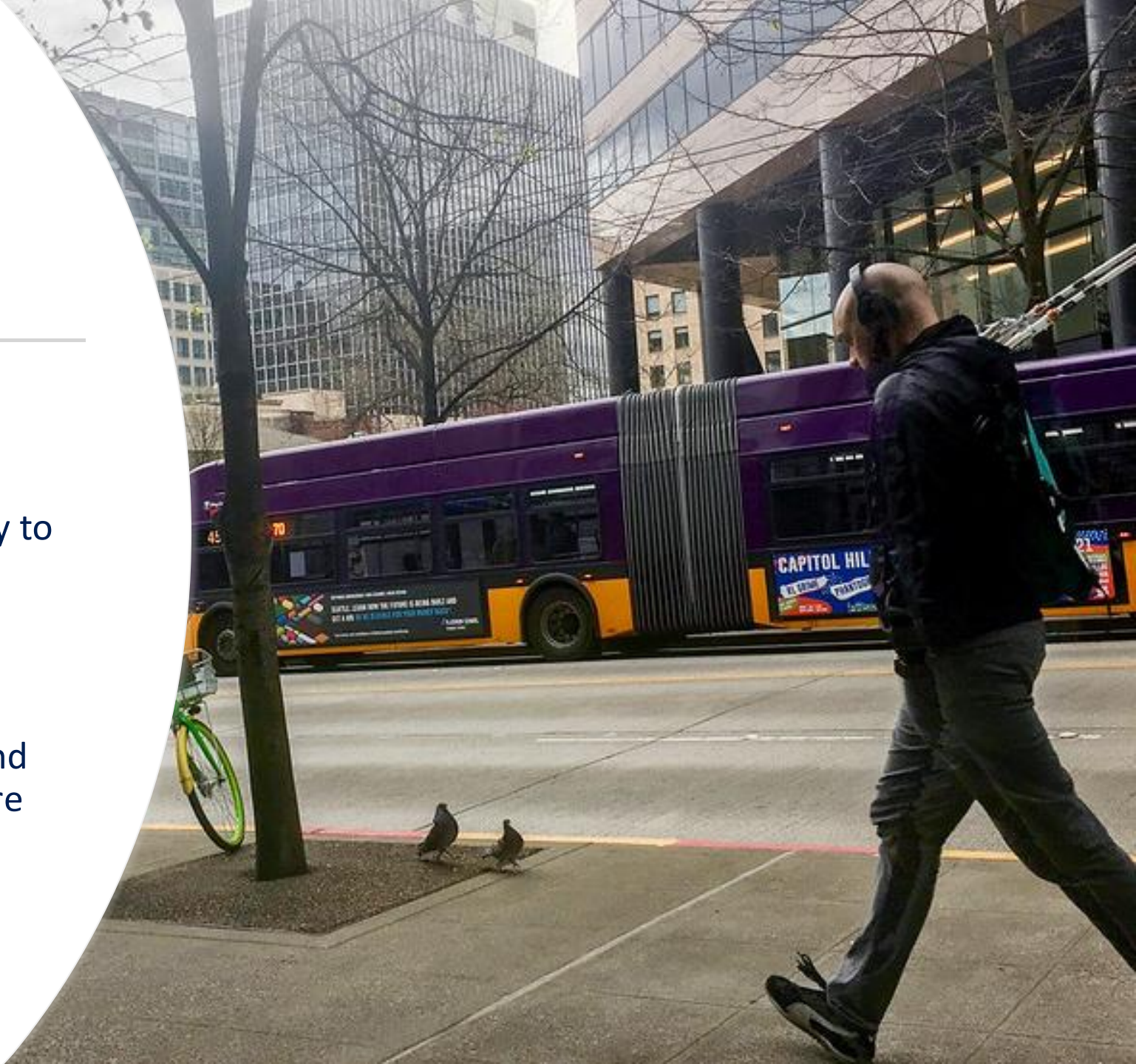
- Completed SW Andover St Pedestrian and Bicycle Bridge seismic retrofit (shown at right) to make the bridge safer in the event of an earthquake



Q1 2022 Highlights

Intelligent Transportation Systems (ITS)

- Added 2.25 miles to our ITS network
 - 1.25 miles on 3rd Ave from Yesler Way to Wall St (3rd Ave shown at right)
 - 1 mile on 4th Ave from Jefferson St to Stewart St
 - Part of Network Resiliency Project, focused on creating faster, reliable, and more centralized traffic signals that are stable & secure during unexpected disruptions



News: Fairview Ave N Bridge National Award

- The Fairview Ave N Bridge replacement received a national American Public Works Association (APWA) Project of the Year award in April

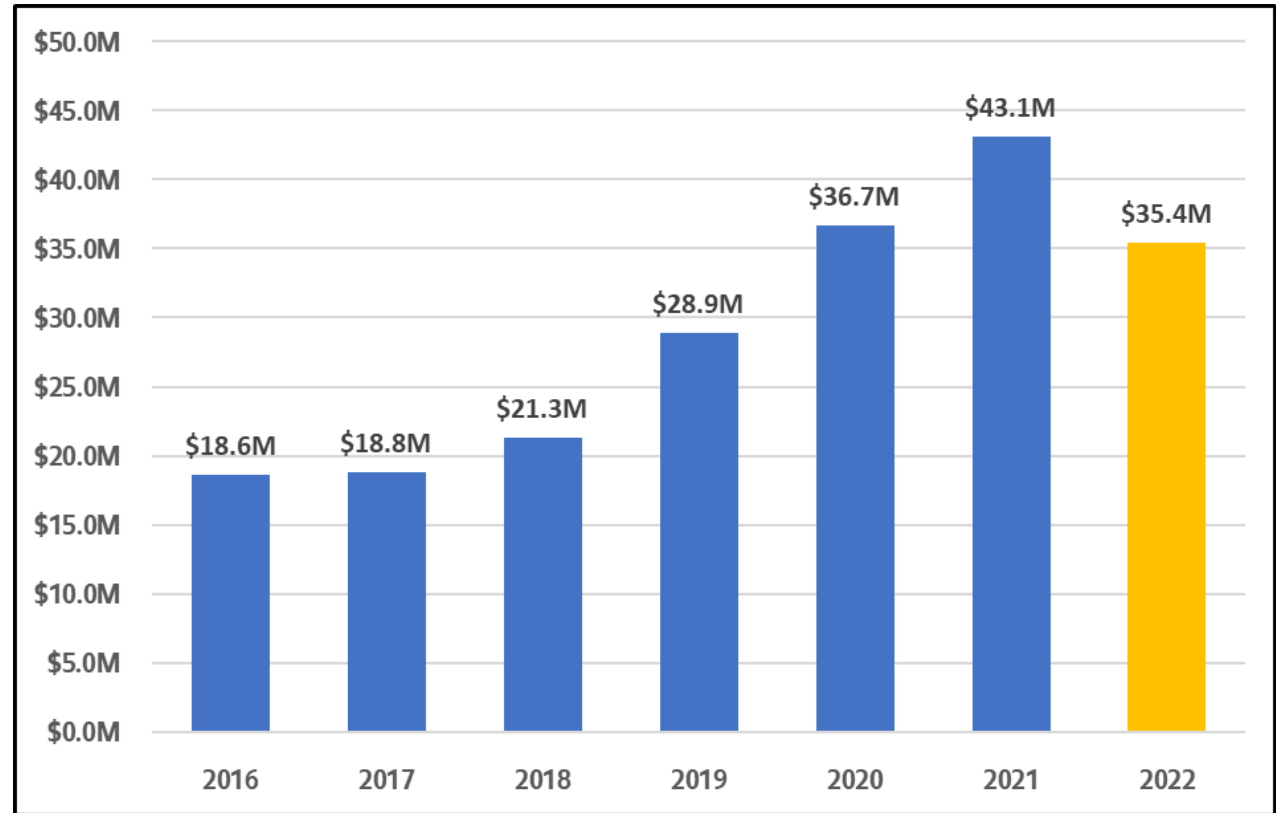


Q1 2022 MSL Financial Summary



| | |
|---|----------------|
| Safe Routes | \$9.3M |
| 04. Transportation Operations | \$2.1M |
| 05. Bicycle Safety | \$2.2M |
| 07. Curb Ramps & Crossings | \$1.8M |
| Maintenance & Repair | \$6.2M |
| 09. Arterial Roadway Maintenance | \$1.1M |
| 11. Bridge Repair Backlog | \$1.8M |
| 12. Bridge Seismic Improvements | \$1.1M |
| 16. Tree Planting & Trimming | \$1.1M |
| Congestion Relief | \$19.9M |
| 18. Multimodal Improvements | \$9.4M |
| 19. Traffic Signal Improvements | \$1.6M |
| 20. Intelligent Transportation Sys. Improv. | \$1.6M |
| 25. New Sidewalks | \$1.3M |

Q1 SPENDING YEARLY COMPARISON – ALL FUNDS



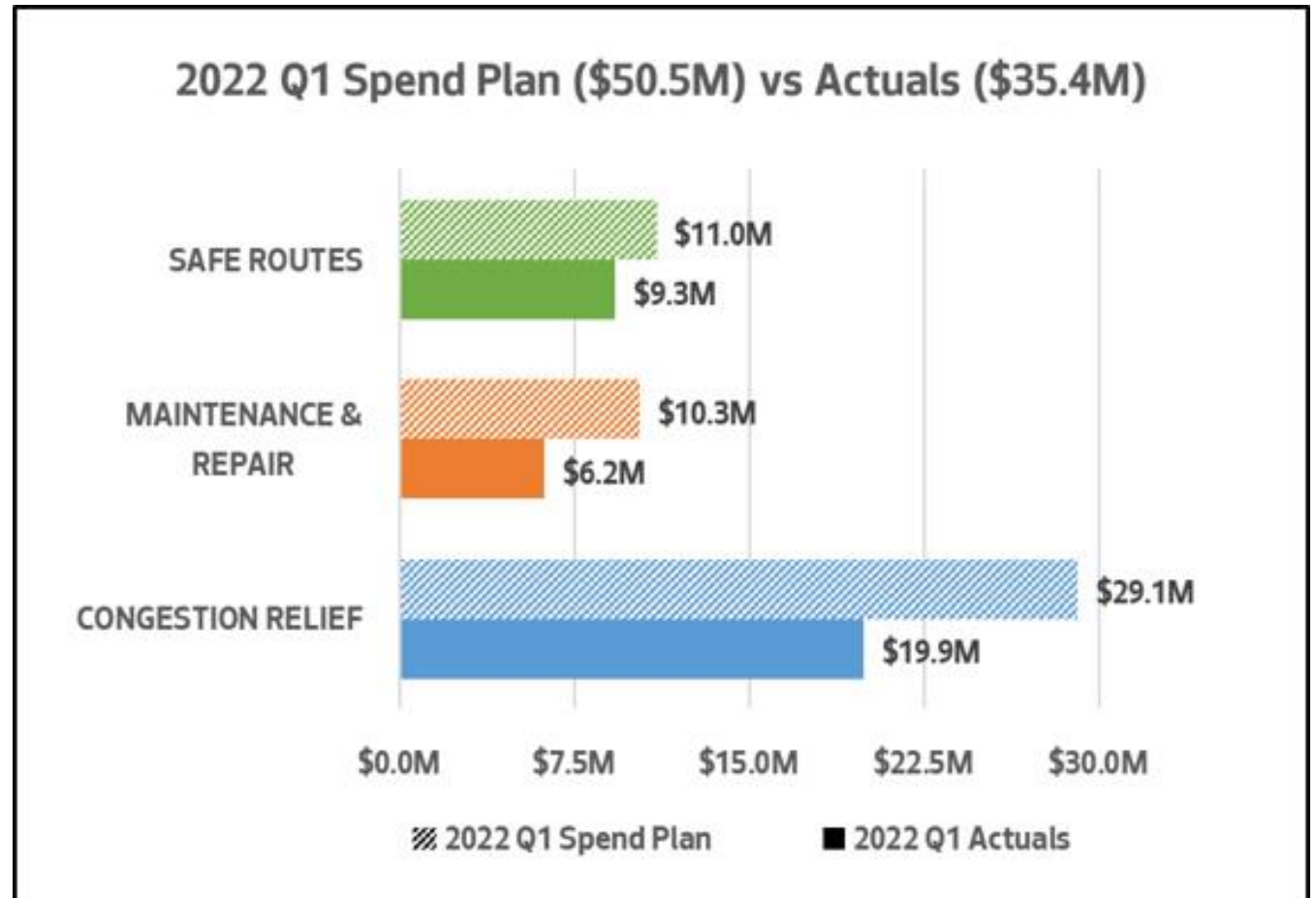
Q1 2022 MSL Financial Summary | Spend Variance

SAFE ROUTES

- **Program 1 | Safety Corridors:** Q1 spending \$700k below plan. Concrete strike caused delays in multiple projects, including Lake City Way and 15th Ave S.

MAINTENANCE & REPAIR

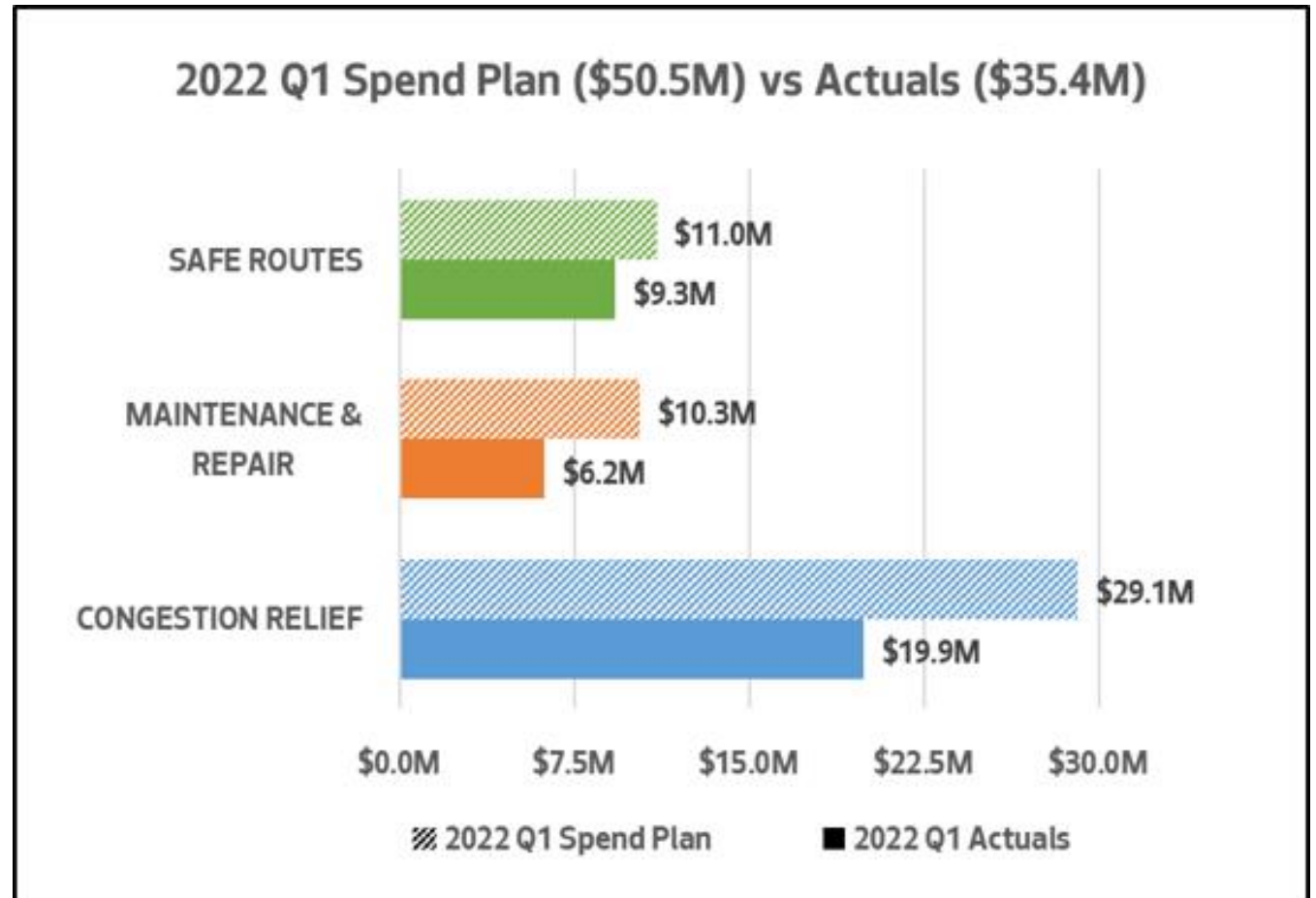
- **Program 9 | Arterial Roadways Maintenance:** Q1 spending \$2.0M below plan. This is also primarily attributed to the concrete strike, which delayed progress on paving projects.
- **Program 12 | Bridge Seismic Improvements:** Q1 spending \$1.8M below plan:
 - **Delridge Pedestrian Bridge:** Final design was shifted to conduct additional outreach
 - **8th Ave NW/NW 133rd St Bridge and SW Andover Pedestrian Bridge:** Construction delays associated with the concrete strike.



Q1 2022 MSL Financial Summary | Spend Variance

CONGESTION RELIEF

- **Program 23 | Northgate Bridge:** Q1 spending \$700k below plan. Once landscape planting is finished, the project will pay several lump sum bid items that could only be paid once all work had been completed.
- **Program 25 | New Sidewalks:** Q1 spending \$1.7M below plan. Concrete strike resulted in delays to numerous sidewalk projects. Spending is expected to increase in Q2 with concrete becoming available again.
- **Program 29 | Heavy Haul Network, East Marginal Way:** Q1 spending \$1.1M below plan. Project schedule delayed due to ongoing negotiations with BNSF and UPRR.



Thank you!