



Transportation Revenue in Seattle

Levy Oversight Committee

November 7, 2023

Chris Godwin, SDOT Finance Manager

Purpose

- Respond to questions posed by the LOC over the past few months
- Provide overview of alternative revenue sources to inform a focus on the Levy by the LOC

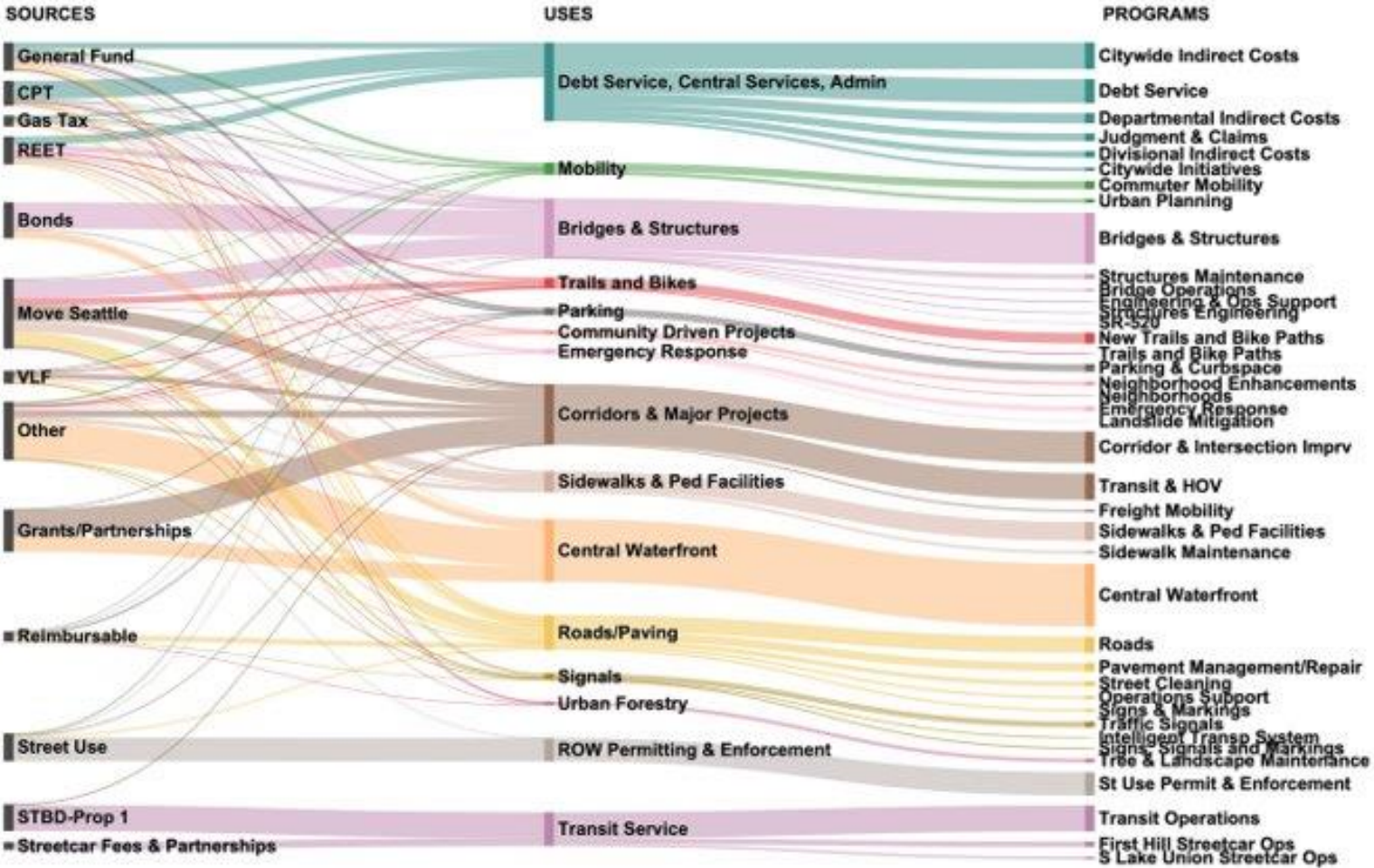
Key Takeaways

- We're considering all the transportation work we need to do to develop a comprehensive, sustainable plan to fund near-term project and program priorities
- We are taking a thorough look at the funding sources available for transportation in Seattle
- We are working on aligning our project and program needs with the appropriate funding sources so that we have comprehensive, sustainable transportation funding

The Levy to Move Seattle as a revenue source

- Today, Seattle's transportation system is funded by a variety of revenue sources
- The Levy to Move Seattle, a property tax levy, is *one revenue source*
- The Levy to Move Seattle funds *in part* or *in full* the 30 Levy programs
- **The Levy to Move Seattle does not generate enough revenue to fund all of SDOT's work**

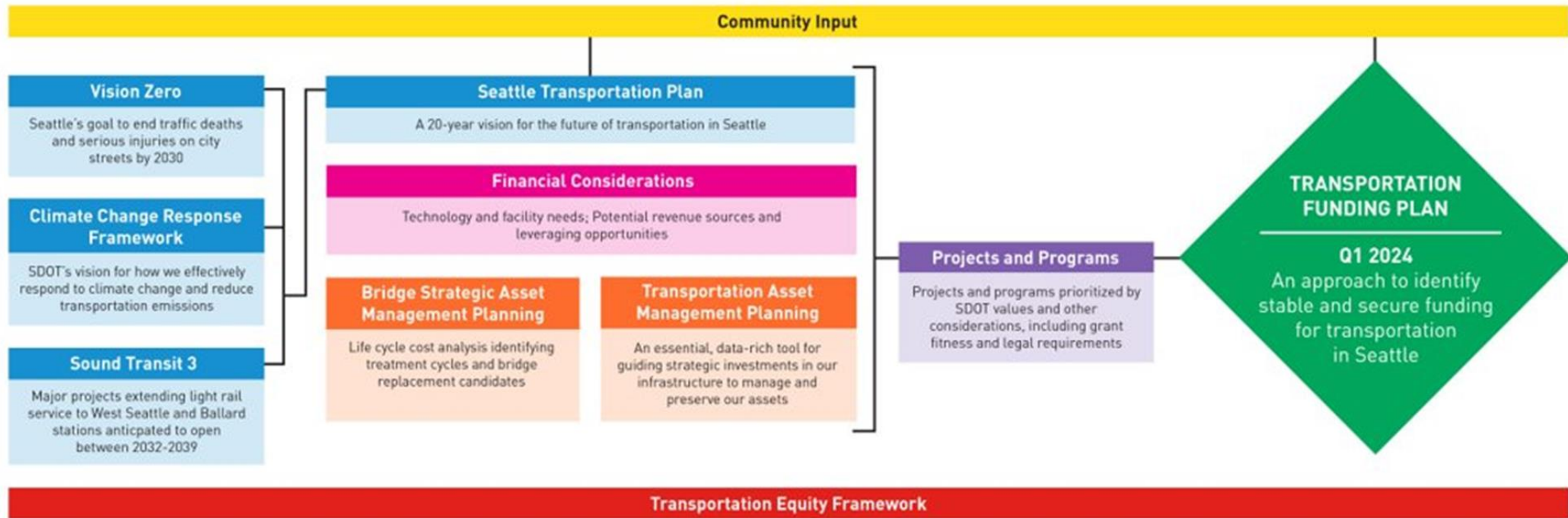
SDOT's Complex Funding Picture



The variability of SDOT revenues and the restrictions on their use contributes to a complicated tapestry for how we fund our various projects.

Key Inputs to the Transportation Funding Plan

SDOT Planning Inputs to the Transportation Funding Plan



We're considering all the transportation work we need to do and developing a comprehensive, sustainable plan to fund near-term project and program priorities.

Revenue Sources Under Consideration

- As part of our Transportation Funding Plan work, we looked at all legal transportation funding tools in the State of Washington
- We are considering all current funding sources
- There are other tools that could be available in Seattle in the future, including Transportation Impact Fees

Funding Sources

Levies
Grants, Loans, Partnership Funds
Seattle Transit Measure 0.15% Sales Tax
Street Vacation
Reimbursable
Property Proceeds
Street Use & Occupation Fees
Gas Tax
Vehicle License Fees
Real Estate Excise Tax (REET)
School Safety Traffic & Ped Improvement
Commercial Parking Tax
General Fund

How do other cities fund transportation?

Just like Seattle, it's a complex mix! Non-exhaustive list includes:

- ✓ State/Federal Grants
- ✓ Sales Tax
- ✓ Property Tax Levies
- ✓ Bonds
 - General obligation of the City
 - Property tax-backed bonds
- ❖ Impact Fees
- ❖ Tax Increment Financing (Chicago uses TIF for protected bikeways when located in a TIF district)
- ❖ Business Improvement Districts (Atlanta's Midtown Community Improvement District, a self-taxing district of commercial property owners, is investing in PBLs)
- ❖ Private Sources

KEY

- ✓ Seattle is currently using
- ❖ Challenges to using for transportation in Seattle

Thank you!

- This presentation summarizes alternative revenue sources to inform a focus on the Levy by the LOC.
- We appreciate the LOC's partnership in this work!