



# Seattle's Comprehensive Plan

Created for and by Seattle's communities, it helps guide the city's housing and job growth over the next 20 years.

Updated every 8 years, the last update, called Seattle 2035, was completed in 2016.

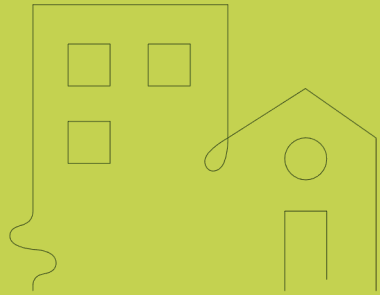


# Comprehensive Plan Major Update

## What makes our next update different?

- Global pandemic and recovery
- National reckoning with systemic racism
- Climate change and adaptation at the forefront
- Persistent housing crisis and displacement risk
- Seattle's rapid growth is anticipated to continue

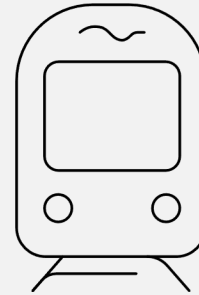
# Policies Guide Many City Actions



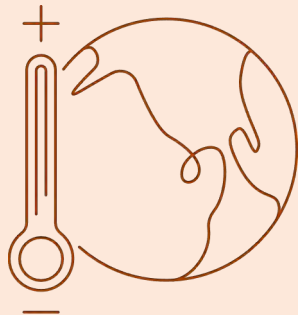
housing



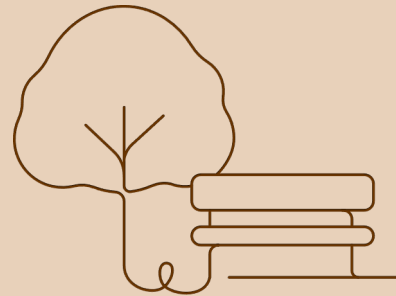
jobs/economy



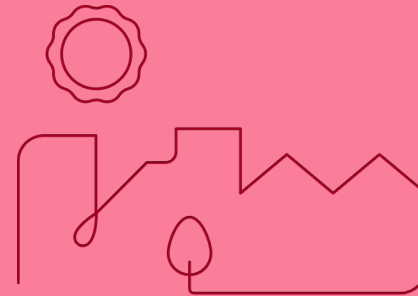
transportation



environmental justice/  
climate change



parks/open spaces



livability

# Community Engagement Goals

- Citywide and neighborhood level
- Equitable engagement ethos
- Effective communication
  - Meaningful, relevant
  - Plain talk and graphics
  - Multiple channels and platforms (virtual & in-person)
  - Accessible and multi-lingual
- Meaningful engagement
  - Interaction and co-creation
  - Transparency, responsiveness, and accountability



# Equitable Community Engagement

## Prioritize resources to engage with:

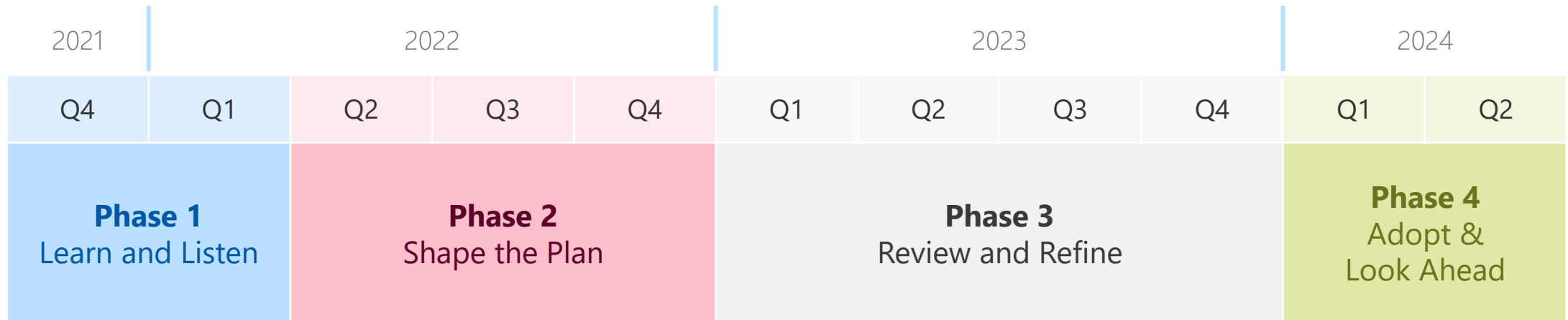
- ✓ BIPOC communities
- ✓ Limited-English populations
- ✓ Youth
- ✓ Renters
- ✓ LGBTQ community
- ✓ People with disabilities
- ✓ Low-income populations
- ✓ People experiencing homelessness

---

## We will also engage with:

- City boards and commissions
- Public agencies
- Cultural organizations
- Policy advocates
- Community-based organizations
- Neighborhood associations
- Business associations
- Small business owners
- Property owners
- Builders and developers
- General public

# Timeline for Engagement



Thank You

